

FACE IT: Report Slides



Law Enforcement Officer – Motor Vehicle

Officer dies in motor vehicle crash at an intersection while responding to a shots fired call – South Carolina (NIOSH LEO 2016-03)

Summary

- A 37-year-old municipal police officer was fatally injured when her patrol car was struck by another law enforcement vehicle on a city roadway while responding to a shots fired call.
- The officer was en-route to her primary patrol region after escorting a suspect to the city jail when she responded to a shots fired call from municipal dispatch.



Municipal patrol unit at crash scene
(Photo courtesy of South Carolina Highway Patrol)

Summary



Photo of the university patrol 4x4 utility vehicle at crash scene
(Photo courtesy of South Carolina Highway Patrol)

- Multiple university and municipal police officers were working in the same vicinity and simultaneously responded to the shots fired call.
- As the municipal police officer was traveling westbound, running lights and sirens, she entered an intersection against the traffic control device.
- At the same time, a university police officer traveling northbound, also running lights and siren, entered the same intersection.



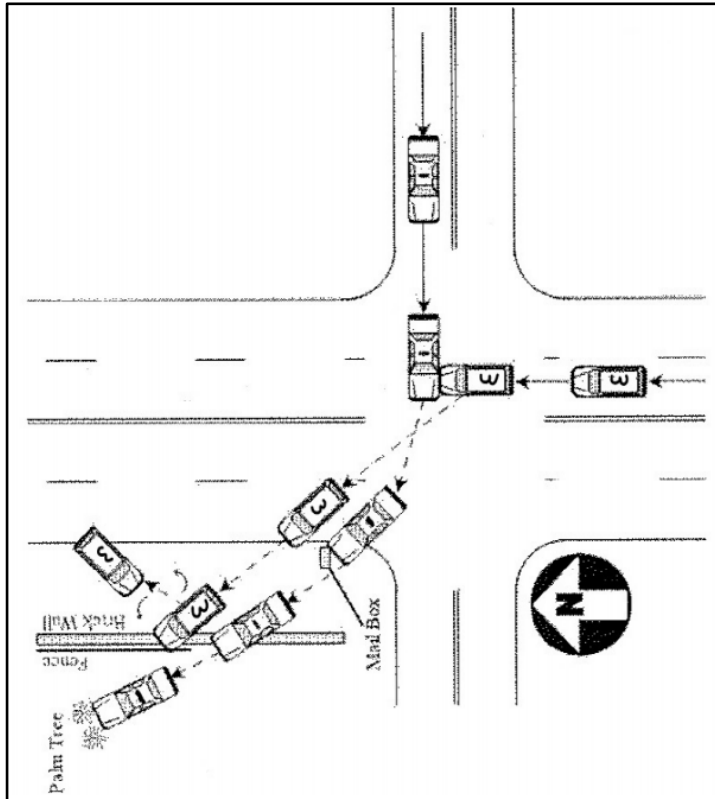
Law Enforcement Officer – Motor Vehicle

Contributing Factors

- Two vehicles entered intersection at the same time
- Speed of vehicles
- Multiple agency and patrol car response
- Potential adrenaline overload
- Poor line of sight at the intersection



Recommendations



Impact of municipal and university patrol units (Courtesy of South Carolina Highway Patrol)

- State, county, and municipal law enforcement agencies should consider developing and implementing standard operating procedures (SOPs) that require drivers to come to a complete stop at red traffic lights and stop signs during responses and proceed through intersections only after ensuring it is safe to continue
- State, county, and municipal law enforcement agencies should consider developing and implementing SOPs that limit the speed of a patrol unit during responses.



Recommendations

- State, county, and municipal law enforcement agencies and training academies should consider training and emphasizing Tactical Arousal Control Techniques to enhance officer's ability to combat negative effects of 'adrenaline dump' that can occur when responding to hot calls.



Municipal patrol unit involved in crash
(Courtesy of South Carolina Highway Patrol)



Law Enforcement Officer – Motor Vehicle

Recommendations

- State, county, and municipal law enforcement agencies should establish and enforce a standard operating policy that requires all officers to wear a seatbelt while operating or riding in a patrol unit.
- State, county, and municipal agencies should consider developing and implementing interagency jurisdictional policies that outline roles and responsibilities in situations or physical locations where a multiple agency response is possible.



Law Enforcement Officer – Motor Vehicle

Officer dies in motor vehicle crash at an intersection while responding to a shots fired call – South Carolina (NIOSH LEO 2016-03)

**Law Enforcement Officer
Motor Vehicle Crash Investigation**

LEO 2016-03
September 25, 2018

Officer dies in motor vehicle crash at an intersection while responding to a shots fired call – South Carolina

EXECUTIVE SUMMARY

On November 7, 2015, a 37 year old municipal police officer was fatally injured when her patrol car was struck by another law enforcement vehicle on a city roadway while responding to a shots fired call.

The officer was en-route to her primary patrol region after escorting a suspect to the city jail when she responded to a shots fired call from municipal dispatch. Multiple university and municipal police officers were working in the same vicinity and simultaneously responded to the shots fired call. As the municipal police officer was traveling westbound, running lights and sirens, she entered an intersection against the traffic control device. At the same time, a university police officer traveling northbound, also running lights and siren, entered the same intersection. The northbound university patrol vehicle crashed into the westbound municipal patrol car. Both officers were taken to a local medical center by ambulance. The municipal police officer died from injuries sustained in the crash. The university police officer received serious injuries.




Photo 1. Municipal patrol unit at crash scene (Photo courtesy of South Carolina Highway Patrol)

CONTRIBUTING FACTORS
Key contributing factors identified in this investigation include:

- Two vehicles entered intersection at the same time
- Speed of vehicles
- Multiple agency and patrol car response
- Potential adrenaline overload
- Poor line of sight at the intersection

KEY RECOMMENDATIONS
NIOSH investigators concluded that, to help prevent similar occurrences:

- State, county, and municipal law enforcement agencies should consider establishing, training, and enforcing standard operating procedures (SOPs) that require drivers to come to a complete stop at red traffic lights and stop signs during responses and proceed through intersections only after ensuring it is safe to continue.

1

Download the full report: <https://www.cdc.gov/niosh/face/pdfs/L201603.pdf>



Contact Us

Fatality Assessment and Control Evaluation
Surveillance and Field Investigations Branch
Division of Safety Research, NIOSH
1000 Frederick Lane, M/S 1808
Morgantown, West Virginia 26505-2888
FACE Web Site: <https://www.cdc.gov/niosh/face/>

Follow FACE on Twitter @NIOSHFACE