

COVID-19 Vaccination Site Accessibility, United States, December 11, 2020–March 29, 2022

Randy Yee, David Carranza, Christine Kim, James Phillip Trinidad, James L. Tobias, Roma Bhatkoti, Sachiko Kuwabara

During December 11, 2020–March 29, 2022, the US government delivered ≈700 million doses of COVID-19 vaccine to vaccination sites, resulting in vaccination of ≈75% of US adults during that period. We evaluated accessibility of vaccination sites. Sites were accessible by walking within 15 minutes by 46.6% of persons, 30 minutes by 74.8%, 45 minutes by 82.8%, and 60 minutes by 86.7%. When limited to populations in counties with high social vulnerability, accessibility by walking was 55.3%, 81.1%, 86.7%, and 89.4%, respectively. By driving, lowest accessibility was 96.5% at 15 minutes. For urban/rural categories, the 15-minute walking accessibility between noncore and large central metropolitan areas ranged from 27.2% to 65.1%; driving accessibility was 79.9% to 99.5%. By 30 minutes driving accessibility for all urban/rural categories was >95.9%. Walking time variations across jurisdictions and between urban/rural areas indicate that potential gains could have been made by improving walkability or making transportation more readily available.

On December 11, 2020, the US Food and Drug Administration (FDA) authorized the first COVID-19 vaccine for emergency use for persons ≥16 years of age (1). Although during the initial period of limited supply the vaccine was allocated to at-risk older adults and certain essential workers, by the end of spring 2021 vaccine eligibility gradually expanded to all adults (2). On September 22, 2021, the Pfizer-BioNTech (<https://www.pfizer.com>) COVID-19 vaccine emergency use authorization was amended to allow a single booster dose for elderly adults and adults with underlying medical

conditions. By November 19, 2021, a booster dose was recommended for all adults (1), and on March 29, 2022, emergency use authorization allowed for a second booster dose (3). By March 29, 2022, the percentage of adults who had completed the primary COVID-19 vaccination series was 75.4%, and 48.2% had received a booster dose (4).

A major structural barrier of the US COVID-19 vaccination campaign is vaccine accessibility. The Assistant Secretary for Planning and Evaluation, Office of Health Policy, found that major barriers to vaccine coverage were transportation-related costs, opportunity costs, and inadequate functional proximity to the vaccines (5). The US Centers for Disease Control and Prevention (CDC) has provided recommendations to jurisdictions with regard to the planning of convenient COVID-19 vaccination sites, including use of gap analysis to spatially assess optimal locations for additional sites, especially those with populations of homebound persons or persons living in remote places (6,7).

Another major theme of the vaccination campaign has been equity of access. The CDC COVID-19 Response Health Equity Strategy has outlined tangible activities for ensuring equity in the nationwide distribution and administration of COVID-19 vaccines through data-driven approaches such as expanding vaccine data collection, reporting, and analyses (8). Organizations such as the Office for Civil Rights also have highlighted accessibility challenges and the need for federally assisted healthcare providers to ensure fair and equitable access to vaccines and boosters, citing laws such as Title VI of the Civil Rights Act of 1964 and Section 1557 of the Affordable Care Act (9). The White House has repeatedly confirmed its commitment to ensuring equitable access to COVID-19 vaccines (10–12).

Author affiliations: Centers for Disease Control and Prevention, Atlanta, Georgia, USA (R. Yee, D. Carranza, C. Kim, J.L. Tobias, R. Bhatkoti, S. Kuwabara); US Department of Health and Human Services Coordination Operations and Response Element, Washington, DC (J.P. Trinidad)

DOI: <https://doi.org/10.3201/eid3005.230357>

Geographic information systems have proven valuable for evaluating functional proximity of populations to vaccination sites; geospatial analyses use dynamic travel time estimation methods for vaccine modeling and planning increasing during the COVID-19 pandemic (13–21). For example, Whitehead et al. calculated travel times between Aotearoa, the New Zealand census-derived Statistical Area 1 level, to all potential vaccine delivery sites with a road network and origin/destination analysis (J. Whitehead et al., unpub. data, <https://www.medrxiv.org/content/10.1101/2021.08.26.21262647v1>). In a nationwide study in England, Duffy et al. measured accessibility from statistical and administrative neighborhood centroids to COVID-19 vaccination sites by using the closest

travel time routes and the most likely transport mode in each area: by car, by public transport, or on foot (20). Another study conducted in Kenya used a cost-distance algorithm based on walking and motorized modes to generate a gridded travel time surface at the 1×1 -km spatial resolution level together with a population density layer from WorldPop (<https://www.worldpop.org>) to determine accessibility of population to vaccination centers (21). A Bayesian conditional autoregressive model was then used to identify inequalities in accessibility and to predict vaccination coverage rates (21).

Knowledge of the functional proximity to vaccine sites for different populations is essential for effective planning and for ensuring equity of health

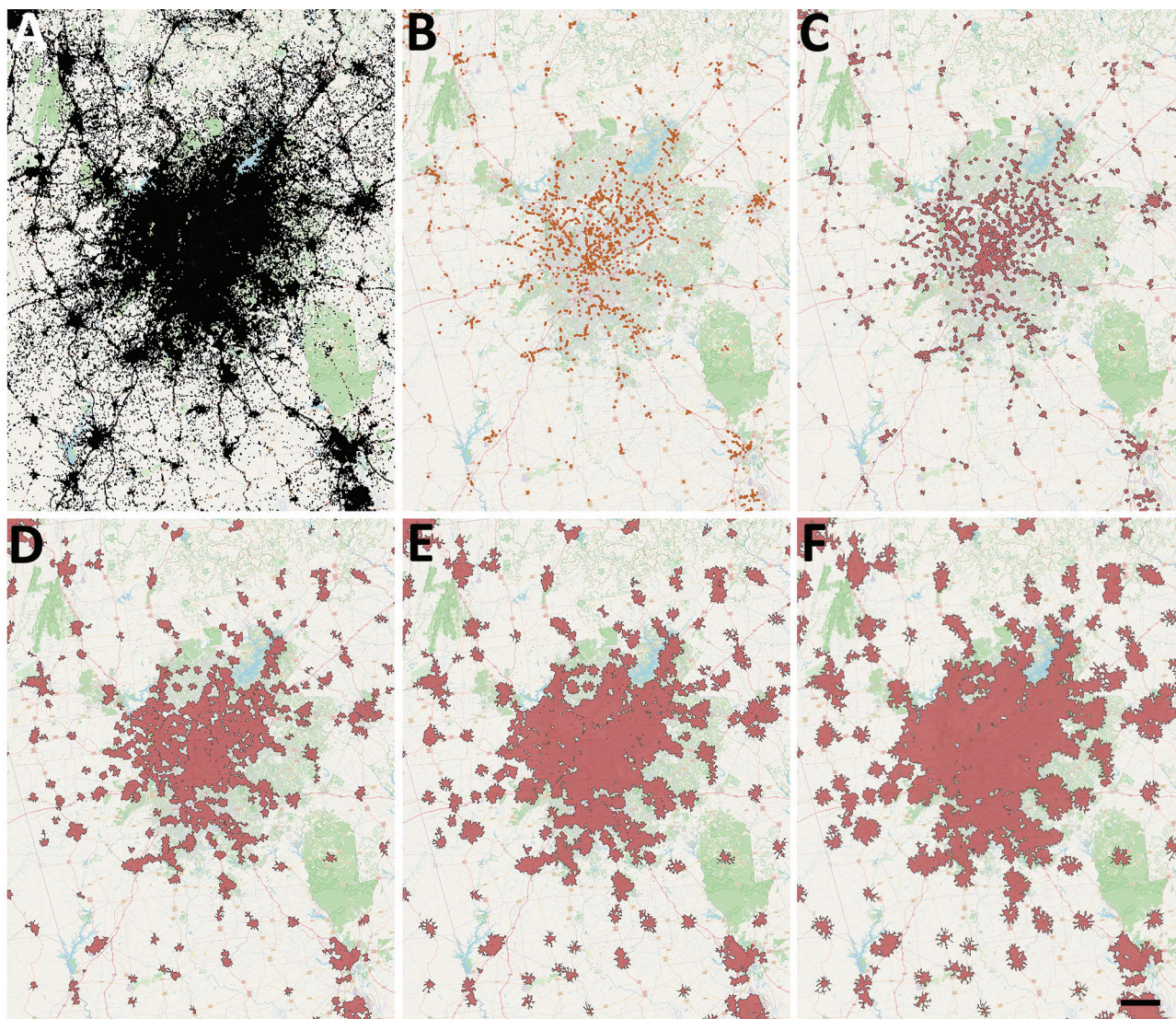


Figure 1. COVID-19 vaccination site accessibility, Atlanta metropolitan area, Georgia, USA, December 11, 2020–March 29, 2022. A) Adult population density; B) COVID-19 providers; C) COVID-19 vaccination site accessible by 15-minute walk; D) 30-minute walk; E) 45-minute walk; F) 60-minute walk. Scale bar indicates 20 km.

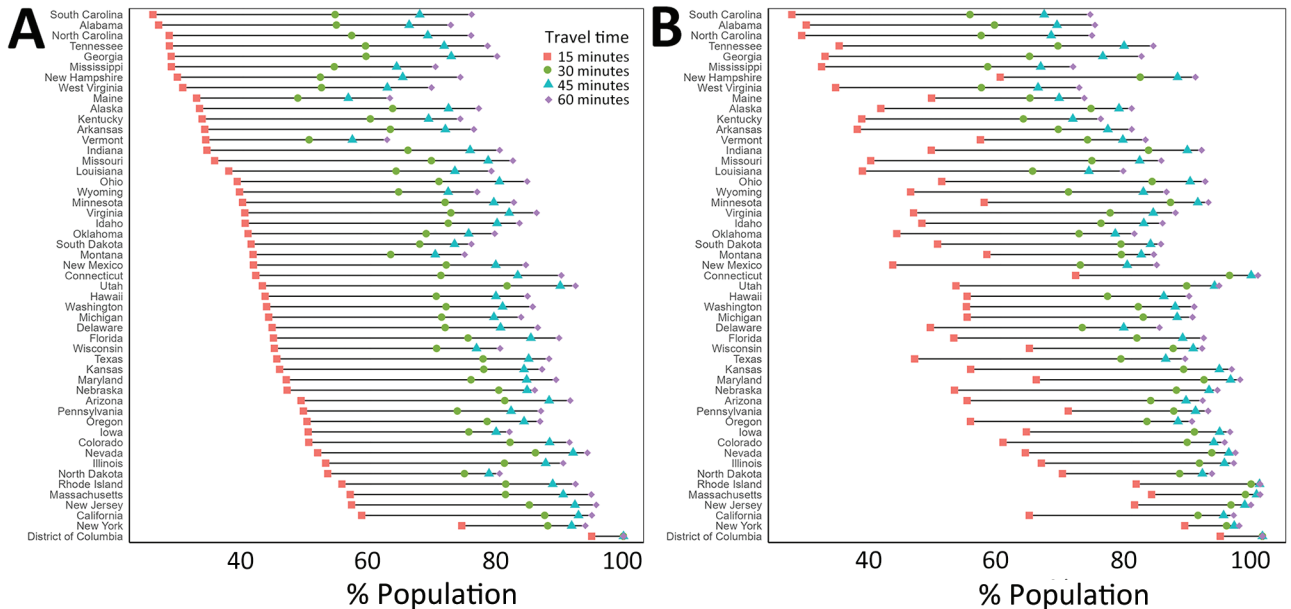


Figure 2. Adult COVID-19 vaccination site accessibility according to walking time in 15-minute intervals, by state, United States, December 11, 2020–March 29, 2022. A) Overall accessibility; B) accessibility for areas with high scores on the Centers for Disease Control and Prevention/Agency for Toxic Substances and Disease Registry Social Vulnerability Index.

resource access in public health emergencies. With our retrospective study, we evaluated accessibility of COVID-19 vaccine sites nationally by walking and driving travel times at the jurisdiction, community social vulnerability, and urban/rural levels.

The study was approved by the CDC National Center for Health Statistics. CDC investigators did not interact with human subjects or have access to identifiable data or specimens.

Methods

To obtain a list of active provider sites, we queried the official platform for US COVID-19 vaccine distribution, the Tiberius system (<https://www.cdc.gov/vaccines/programs/tiberius/index.html>). We defined an active provider site as any provider site from December 11, 2020 (with FDA authorization for emergency use of the first COVID-19 vaccine, Pfizer-BioNTech) through March 29, 2022 (with FDA authorization of a second booster dose for older and immunocompromised persons) that at any point reported any inventory in the preceding 7 days, received a shipment in the preceding 28 days, or administered ≥ 1 dose of adult COVID-19 vaccine during the preceding 28 days (1,3). Sites must have been a provider of one of the approved or authorized adult COVID-19 vaccines in the United States during the study period: Pfizer-BioNTech, Moderna (<https://www.modernatx.com>), and Janssen (<https://www.jnj.com>). To avoid potentially overestimating provider site

accessibility for the general population, we excluded sites serving institutionalized or long-term resident populations (e.g., prisons, detention facilities, and nursing homes) or military personnel (e.g., Department of Defense provider sites).

We grouped provider sites into 1 of 5 self-reported categories: community health, hospital, medical practice, pharmacy, and unknown/other (Appendix Figure 1, <https://wwwnc.cdc.gov/EID/article/30/5/23-0357-App1.pdf>). Community health providers were reported as public health, tribal health, or commercial vaccination service sites. The hospital category included only those reporting as hospital providers. Medical practice providers were reported as doctor’s offices or practices, health centers, urgent care, or Indian Health Service. Pharmacy sites were reported as retail pharmacy or other pharmacy sites. Sites categorized as unknown/other were either reported as home health, other, or no selection.

To calculate isochrones (areas from which a site can be reached within a specific travel time) for each provider site we used OpenRouteService (<https://openrouteservice.org>), an open-source global spatial routing service. We obtained the latest OpenStreetMaps road data for the United States (<https://planet.openstreetmap.org>) from Geofabrik (<http://www.geofabrik.de>). We deployed OpenRouteService locally on Docker, a containerization platform for creating and running applications, and accessed it through Quantum GIS (<http://www.qgis.org>) via

the OpenRouteService Tools plugin (22,23). We generated isochrones around each site for walking and driving with the time thresholds of 15, 30, 45, and 60 minutes. We calculated walking and driving travel speeds by using the OpenRouteService algorithm, which is described in their documentation. For the underlying US adult population raster layer, we obtained 2019 US population estimates for female/male ≥ 15 -year age bands constrained to built settlements from WorldPop and aggregated the data in Python (24,25). We then calculated site accessibility by overlaying the isochrone contours on top of the population layer and using zonal statistics in Quantum GIS to determine the population residing within the isochrones (Figure 1).

We evaluated accessibilities for US adults living at different community social vulnerability levels and urbanicity by using the CDC/Agency for Toxic Substances and Disease Registry Social Vulnerability Index (SVI), a composite index based on 15 US Census variables grouped by socioeconomic status, house-

hold composition and disability, minority status and language, and housing and transportation (26). The most recent SVI was released in 2018, and the range was 0–1, with 1 representing the highest vulnerability (26). High SVI was defined as an overall SVI >0.5 and was used as a filter for the population residing in those areas.

The National Center for Health Statistics Urban-Rural Classification Scheme for 2013 classified counties into 1 of 6 categories: large central metropolitan, large fringe metropolitan, medium metropolitan, small metropolitan, micropolitan, and noncore (core urban population $<10,000$) (27). We aggregated the adult population for each of these urban/rural areas and calculated accessibilities by using the same isochrones generated previously.

Results

The total number of active provider sites for the study period was 131,951. There were 57,064 pharmacy sites, 35,728 medical practice sites, 10,606 community

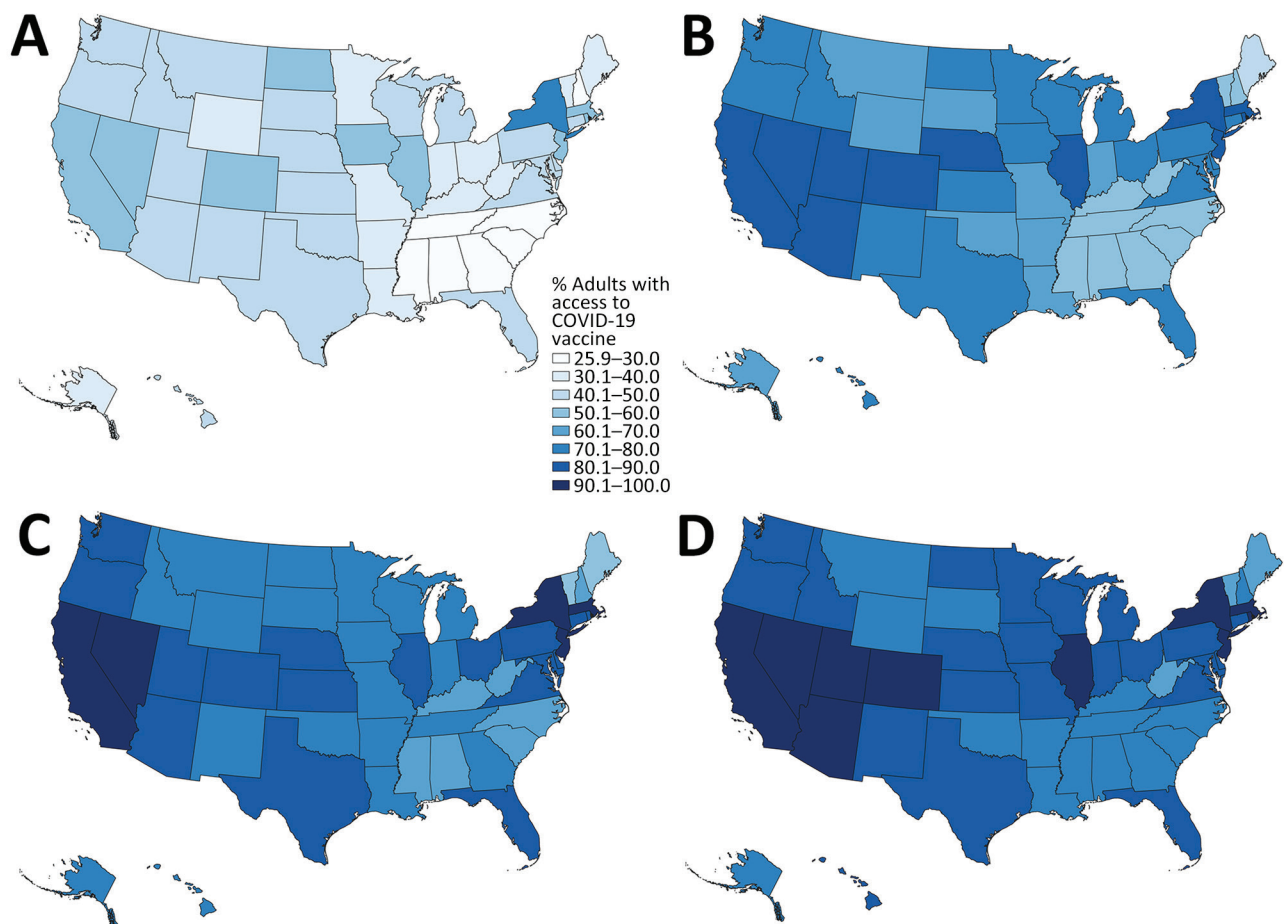


Figure 3. Walking accessibility for COVID-19 vaccination sites, by state, United States, December 11, 2020–March 29, 2022: A) 15 minutes; B) 30 minutes; C) 45 minutes; D) 60 minutes.

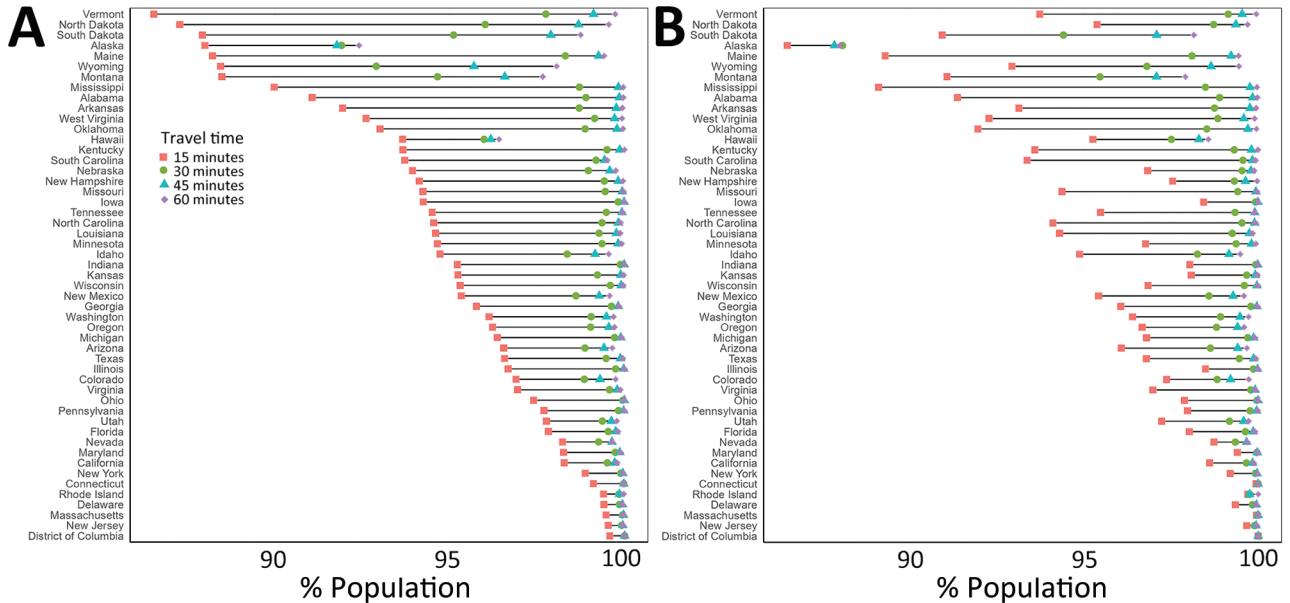


Figure 4. Adult COVID-19 vaccination site accessibility according to driving time in 15-minute intervals, by state, United States, December 11, 2020–March 29, 2022. A) Overall accessibility; B) accessibility for areas with high scores on the Centers for Disease Control and Prevention/Agency for Toxic Substances and Disease Registry Social Vulnerability Index.

health sites, 5,222 hospitals, and 23,331 unknown or other provider site type (Appendix Figure 2).

National walking accessibilities (the proportion of the population within the stated travel time areas) were found to be 46.6% within 15 minutes, 74.8% within 30, 82.8% within 45 minutes, and 86.7% within 60 minutes. The national driving accessibilities for those times were 96.5%, 99.4%, 99.7%, and 99.8%, respectively (Figures 2–5).

When we limited the population to persons residing in high SVI areas, sites were accessible within a 15-minute walk for 55.3% of the population, 30-minute walk for 81.1%, 45-minute walk for 86.7%, and 60-minute walk for 89.4%; accessibilities for those same times by driving were 97.0%, 99.5%, 99.8%, and 99.9%, respectively (Figures 2, 4). Overall, accessibility was greater in high-SVI areas than in the entire area.

Accessibility tended to improve with increasing urbanicity of the location of provider sites. The non-core walking accessibilities ranged from 15 minutes (27.2%) to 60 minutes (52.7%), and accessibilities for large central metropolitan areas ranged from 65.1% to 97.7%. Driving accessibility ranges were 79.9%–99.0% for noncore and 99.5%–99.9% for large central metropolitan areas (Figure 6).

Discussion

With this study, we estimated a range of accessibilities to COVID-19 vaccination sites for US adults:

46.6% of US adults were within a 15-minute walk to a COVID-19 vaccine provider site, which increased to 86.7% for a 60-minute walk. Accessibility increased further, to 96.5%, for a 15-minute drive. Although access tended to be greater than or equal for high-SVI areas compared with the entire jurisdiction, jurisdictional and urban/rural variations suggest potential inequalities with regard to access. Although we do not attempt to say what the accessibility target should be for each area, future public health campaigns should factor these perspectives into planning.

Given that driving has the potential to greatly increase accessibility, making motorized transportation more readily available to areas in which walking times are high should be considered. Despite rural counties having more households with cars, large numbers of zero-car ownership households depend on underfunded public transportation systems (28,29). Vaccine transportation programs such as MyTurn (<https://myturn.ca.gov>) and those offered by rideshare services such as Uber and Lyft were initiated as part of the response, but whether they are situated for maximum effect could be a topic for another study (30,31). Conversely, another perspective worth investigating is strategic placement of vaccination sites, such as mobile clinics or temporary vaccination sites for walking.

Our analysis considers only 2 travel modalities: walking and driving. We acknowledge that those modalities might not be suitable or preferred by everyone. For example, the average travel time for a person

requiring use of a wheelchair may be greater than the walking speeds calculated by using the OpenRoute Service algorithm. Public transportation, another common mode of travel, can vary according to traffic conditions and whether dedicated travel lanes are available. Nonetheless, walking and driving should give a reasonable range with regard to accessibility of the vaccine.

Among potential limitations of the provider list, not all vaccine provider sites are equally accessible to the public. Provider sites may have policies that restricted access to specific groups of persons or hours of operation that may have excluded persons. Some sites may not be accessible at all because our selection criteria capture sites that are not intended for vaccine administration, such as distribution hubs. Our study assessed only accessibility of static sites and did not consider mobile vaccination clinics or services that provide in-home vaccination. Our study reports the cumulative list of active provider sites, including sites that were not active during the entire period, such as mass vaccination sites operational only during

the early months of the vaccination campaign. Site inactivation is a relevant consideration; a recent study has shown how closures can result in heavy losses of access resulting from increased driving travel times in the more rural parts of the country (32). Furthermore, our analysis did not account for characteristics of the provider vaccine supply, such as availability of specific vaccines or vaccine stock-outs during the study period. The criteria for being an active provider depend on accurate data. The Tiberius platform data are frequently updated, and provider data can be updated days or even weeks later. Although the provider list was pulled well after the close of the study period, those delays could still shift the number of providers flagged as active, depending on the time of data export.

Another limitation is that our analysis evaluated only proximity to a vaccine provider site via established road networks. OpenStreetMaps is an open-sourced project, and although the project is regularly updated by independent contributors, there may be network gaps such as informal roads or hidden back roads. In addition, connecting isochrone endpoints

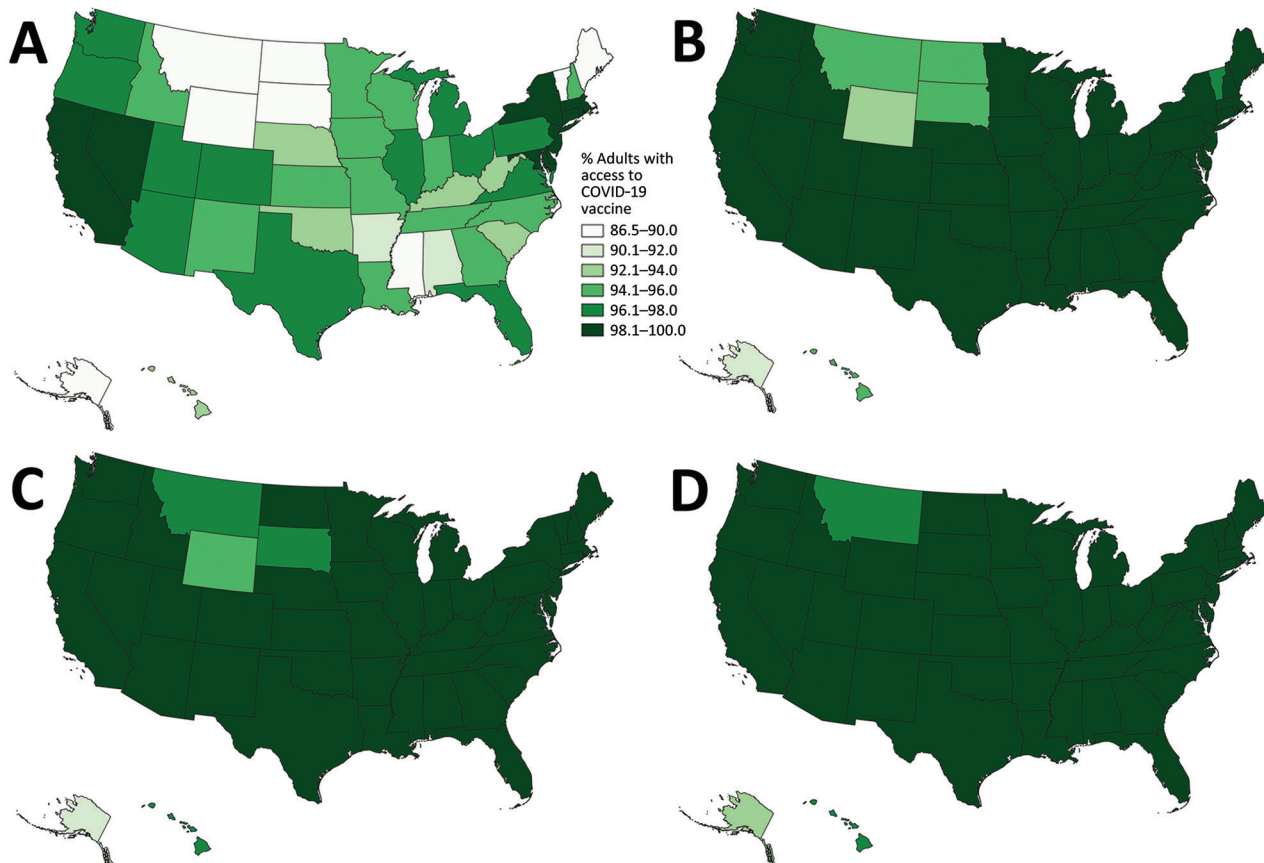


Figure 5. Driving accessibility for COVID-19 vaccination site, by state, United States, December 11, 2020–March 29, 2022: A) 15 minutes; B) 30 minutes; C) 45 minutes; D) 60 minutes.

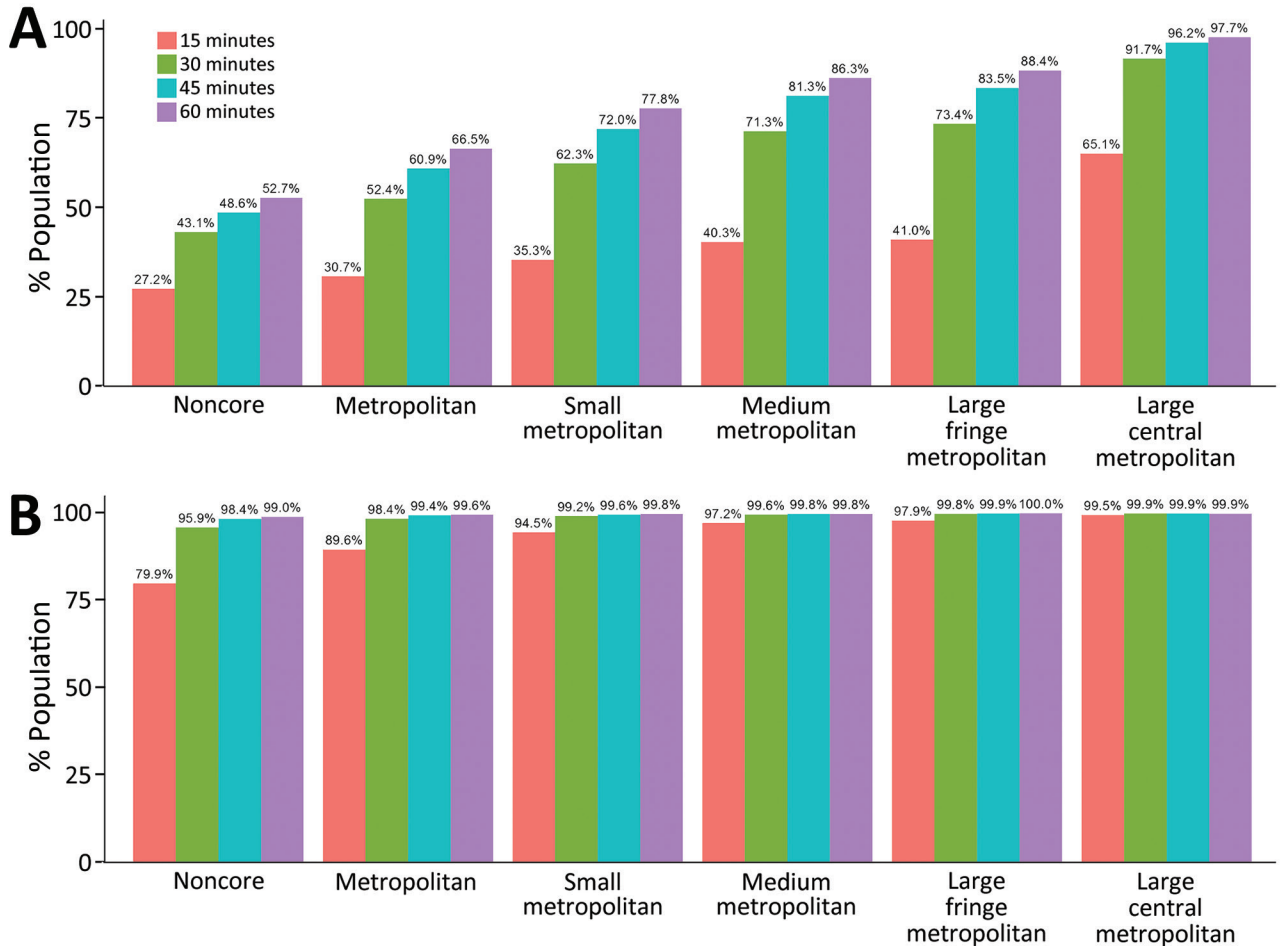


Figure 6. Adult COVID-19 vaccination site accessibility by 2013 Centers for Disease Control and Prevention Urban-Rural Classification, United States, December 11, 2020–March 29, 2022. A) Walking accessibility; B) driving accessibility.

on road networks can produce minor differences in the polygon contours, depending on the method used. Numerous resources compare results between different routing services (33).

One more limitation was timeliness of the geospatial data sources. Worldpop estimates were produced in 2019; the CDC/Agency for Toxic Substances and Disease Registry SVI in 2018; and the National Center for Health Statistics Urban/Rural Classification Scheme in 2013 (24,26,27). Furthermore, we used population estimates for persons ≥ 15 years of age to approximate those eligible for the vaccine within the study period as well as those able to drive. Those estimates may overestimate the driving accessibility for some jurisdictions because driving age does not start at age 15 for all states. Because the estimates were produced in 2019, at the time of our analysis, the entire estimated population would be a few years older (more persons ≥ 15 years of age), better estimating the driving population during the study. Researchers

using our methods should consider the timeliness of their data sources and should either contact the data providers directly or use estimation methods if data sources are out of date. Despite those limitations, we assert the value of our methods and results for vaccine planning purposes.

Our article addresses only the issue of physical access, but accessibility itself is a multifaceted concept. For example, Levesque et al. developed a framework with 5 dimensions of accessibility: approachability, acceptability, availability and accommodation, affordability, and appropriateness (34). Although we have explored some aspects of availability and accommodation, future work could focus on evaluating accessibility along these other dimensions.

In conclusion, the initial US COVID-19 vaccination campaign was a monumental logistical undertaking resulting in deliveries of ≈ 700 million doses to fully vaccinate $\approx 75\%$ of US adults by the end of the study period. Despite that achievement, our analysis

has identified potential areas for improvement at the national, jurisdiction, and urban/rural levels. Our findings highlight the value of evaluating accessibility at different levels for vaccine planning.

US COVID-19 data can be accessed via the CDC COVID Data Tracker (<https://covid.cdc.gov/covid-data-tracker/#datatracker-home>). Map data copyrighted OpenStreetMap contributors are available from <https://www.openstreetmap.org>. No chatbot or artificial intelligence tool was used for any portion of this work.

Acknowledgments

We acknowledge the 62 participating jurisdictions, 21 federal retail pharmacy program partners, and federal entities (Indian Health Services, Health Resources and Services Administration, US Department of Defense, Veterans Health Administration, US Department of State); the CDC COVID-19 Emergency Response Vaccine Task Force, Countermeasures Acceleration Group; and the US Department of Health and Human Services Coordination Operations and Response Element team.

R.Y. and D.C. wrote the main manuscript text, including the figures. All authors reviewed the manuscript.

About the Author

Mr. Yee is a data scientist with the CDC Center for Global Health Division of Global HIV & TB. His research interests include data analytics, mathematical modeling, and capacity building.

References

- Food and Drug Association. Pfizer-BioNTech COVID-19 vaccine [cited 2022 Oct 31]. <https://www.fda.gov/emergency-preparedness-and-response/coronavirus-disease-2019-covid-19/pfizer-biontech-covid-19-vaccines>
- US Department of Health and Human Services. COVID-19 vaccines [cited 2022 Oct 31]. <https://www.hhs.gov/coronavirus/covid-19-vaccines/index.html>
- Food and Drug Association. COVID-19 vaccines [cited 2022 Oct 30]. <https://www.fda.gov/emergency-preparedness-and-response/coronavirus-disease-2019-covid-19/covid-19-vaccines>
- Centers for Disease Control and Prevention. COVID-19 vaccinations in the United States, jurisdiction [cited 2022 Oct 30]. <https://data.cdc.gov/Vaccinations/COVID-19-Vaccinations-in-the-United-States-Jurisdiction/uns-k-b7fc>
- Office of the Assistant Secretary for Planning and Evaluation. Overview of barriers and facilitators in covid-19 vaccine outreach [cited 2022 Oct 31]. <https://aspe.hhs.gov/reports/covid-19-vaccine-outreach>
- Centers for Disease Control and Prevention. Ensuring equitable COVID-19 vaccine access for older adults and people with disabilities [cited 2022 Aug 23]. <https://www.cdc.gov/vaccines/covid-19/clinical-considerations/older-adults-and-disability/access.html>
- Centers for Disease Control and Prevention. What to consider when planning COVID-19 vaccination sites [cited 2022 Oct 31]. <https://www.cdc.gov/vaccines/covid-19/planning/index.html>
- Centers for Disease Control and Prevention. Health equity [cited 2022 Oct 31]. <https://www.cdc.gov/coronavirus/2019-ncov/community/health-equity/cdc-strategy.html>
- US Department of Health and Human Services. Guidance on federal legal standards prohibiting race, color and national origin discrimination in COVID-19 vaccination programs [cited 2022 Oct 31]. <https://www.hhs.gov/civil-rights/for-providers/civil-rights-covid19/guidance-federal-legal-standards-covid-19-vaccination-programs/index.html>
- The White House. American Rescue Plan [cited 2022 Oct 30]. <https://www.whitehouse.gov/american-rescue-plan>
- The White House. COVID-19 [cited 2022 Oct 30]. <https://www.whitehouse.gov/priorities/covid-19>
- The White House. National COVID-19 Preparedness Plan [cited 2022 Oct 30]. <https://www.whitehouse.gov/covidplan>
- Lovett A, Haynes R, Sünnerberg G, Gale S. Car travel time and accessibility by bus to general practitioner services: a study using patient registers and GIS. *Soc Sci Med*. 2002;55:97-111. [https://doi.org/10.1016/S0277-9536\(01\)00212-X](https://doi.org/10.1016/S0277-9536(01)00212-X)
- Todd A, Copeland A, Husband A, Kasim A, Bamba C. Access all areas? An area-level analysis of accessibility to general practice and community pharmacy services in England by urbanity and social deprivation. *BMJ Open*. 2015;5:e007328. <https://doi.org/10.1136/bmjopen-2014-007328>
- Fletcher-Lartey SM, Caprarelli G. Application of GIS technology in public health: successes and challenges. *Parasitology*. 2016;143:401-15. <https://doi.org/10.1017/S0031182015001869>
- Wigley AS, Tejedor-Garavito N, Alegana V, Carioli A, Ruktanonchai CW, Pezzulo C, et al. Measuring the availability and geographical accessibility of maternal health services across sub-Saharan Africa. *BMC Med*. 2020;18:237. <https://doi.org/10.1186/s12916-020-01707-6>
- Sahar L, Douangchai Wills VL, Liu KK, Kazerooni EA, Dyer DS, Smith RA. Using geospatial analysis to evaluate access to lung cancer screening in the United States. *Chest*. 2021;159:833-44. <https://doi.org/10.1016/j.chest.2020.08.2081>
- Whitehead J, Scott N, Carr PA, Lawrenson R. Will access to COVID-19 vaccine in Aotearoa be equitable for priority populations? *N Z Med J*. 2021;134:25-35.
- Mollalo A, Mohammadi A, Mavaddati S, Kiani B. Spatial analysis of COVID-19 vaccination: a scoping review. *Int J Environ Res Public Health*. 2021;18:12024. <https://doi.org/10.3390/ijerph182212024>
- Duffy C, Newing A, Górská J. Evaluating the geographical accessibility and equity of COVID-19 vaccination sites in England. *Vaccines (Basel)*. 2021;10:50. <https://doi.org/10.3390/vaccines10010050>
- Muchiri SK, Muthee R, Kiarie H, Sitienei J, Agweyu A, Atkinson PM, et al. Unmet need for COVID-19 vaccination coverage in Kenya. *Vaccine*. 2022;40:2011-9. <https://doi.org/10.1016/j.vaccine.2022.02.035>
- Merkel D. Docker: lightweight linux containers for consistent development and deployment [cited 2022 Oct 30]. <https://www.seltzer.com/margo/teaching/CS508.19/papers/merkel14.pdf>

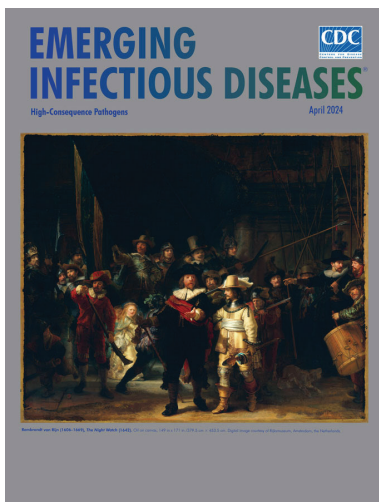
23. Nolde N. ORS Tools QGIS plugin [cited 2022 Oct 30]. <https://github.com/GIScience/orstools-qgis-plugin>
24. WorldPop. Open spatial demographic data and research [cited 2022 Oct 30]. <https://www.worldpop.org>
25. Python Software Foundation. The Python language reference [cited 2022 Oct 30]. <https://docs.python.org/3/reference/index.html>.
26. Agency for Toxic Substances and Disease Registry. CDC/ATSDR Social Vulnerability Index [cited 2022 Oct 30]. <https://www.atsdr.cdc.gov/placeandhealth/svi/index.html>
27. Ingram DD, Franco SF. NCHS Urban-Rural Classification Scheme for Counties. National Center for Health Statistics. Vital Health Stat 2. 2014;1-73.
28. Pucher J, Renne JL. Urban-rural differences in mobility and mode choice: evidence from the 2001 NHTS [cited 2022 Oct 30]. https://vtc.rutgers.edu/wp-content/uploads/2014/04/Articles.Urban-Rural_differences.pdf
29. US Department of Agriculture. Rural transportation at a glance [cited 2022 Oct 30]. <https://www.ers.usda.gov/publications/pub-details/?pubid=42594>
30. Lyft. Millions of people can't get to their vaccine. Let's pick them up [cited 2022 Oct 31]. <https://lyft.com/vaccine-access>
31. Uber. Rides for vaccines [cited 2022 Oct 31]. <https://www.uber.com/us/en/impact/rides-for-vaccines>
32. McCarthy S, Moore D, Smedley WA, Crowley BM, Stephens SW, Griffin RL, et al. Impact of rural hospital closures on health-care access. J Surg Res. 2021;258:170-8. <https://doi.org/10.1016/j.jss.2020.08.055>
33. Riccardo. Comparing isochrone APIs: an insight into different providers [cited 2022 Oct 30]. <https://digital-geography.com/comparing-isochrone-apis-an-insight-into-different-providers>
34. Levesque JF, Harris MF, Russell G. Patient-centred access to health care: conceptualising access at the interface of health systems and populations. Int J Equity Health. 2013;12:18. <https://doi.org/10.1186/1475-9276-12-18>

Address for correspondence: Randy Yee, Centers for Disease Control and Prevention, 1600 Clifton Rd NE, Mailstop H21-6, Atlanta, GA 30329-4018, USA; email: pcx5@cdc.gov

April 2024

High-Consequence Pathogens

- Concurrent Outbreaks of Hepatitis A, Invasive Meningococcal Disease, and Mpox, Florida, USA, 2021–2022
- Deaths Associated with Pediatric Hepatitis of Unknown Etiology, United States, October 2021–June 2023
- Crimean-Congo Hemorrhagic Fever Virus Diversity and Reassortment, Pakistan, 2017–2020
- *Clostridium butyricum* Bacteremia Associated with Probiotic Use, Japan
- Animal Exposure Model for Mapping Crimean-Congo Hemorrhagic Fever Virus Emergence Risk
- Geographic Disparities in Domestic Pig Population Exposure to Ebola Viruses, Guinea, 2017–2019
- Emergence of Poultry-Associated Human *Salmonella enterica* Serovar Abortusovis Infections, New South Wales, Australia
- A One Health Perspective on *Salmonella enterica* Serovar Infantis, an Emerging Human Multidrug-Resistant Pathogen
- Bus Riding as Amplification Mechanism for SARS-CoV-2 Transmission, Germany, 2021



- Isolation of Diverse Simian Arteriviruses Causing Hemorrhagic Disease
- Nephropathia Epidemica Caused by Puumala virus in Bank Voles, Scania, Southern Sweden
- Divergent Pathogenesis and Transmission of Highly Pathogenic Avian Influenza A(H5N1) in Swine
- Alfred Whitmore and the Discovery of Melioidosis
- Effects of Shock and Vibration on Product Quality during Last-Mile Transportation of Ebola Vaccine under Refrigerated Conditions
- Co-Circulating Monkeypox and Swinepox Viruses, Democratic Republic of the Congo, 2022
- Case Report of Nasal Rhinosporidiosis in South Africa
- Reemergence of Sylvatic Dengue Virus Serotype 2 in Kedougou, Senegal, 2020
- Novel Oral Poliovirus Vaccine 2 Safety Evaluation during Nationwide Supplemental Immunization Activity, Uganda, 2022
- Phylogenetic Characterization of *Orthohantavirus dobravaense* (Dobrava Virus)
- *Acanthamoeba* Infection and Nasal Rinsing, United States, 1994–2022
- Isolation of Batborne Neglected Zoonotic Agent Issyk-Kul Virus, Italy
- Melioidosis in Patients with COVID-19 Exposed to Contaminated Tap Water, Thailand, 2021
- Detection of Rat Hepatitis E Virus in Pigs, Spain, 2023

**EMERGING
INFECTIOUS DISEASES**

To revisit the April 2024 issue, go to: <https://wwwnc.cdc.gov/eid/articles/issue/30/4/table-of-contents>

EID cannot ensure accessibility for supplementary materials supplied by authors. Readers who have difficulty accessing supplementary content should contact the authors for assistance.

COVID-19 Vaccination Site Accessibility, United States, December 11, 2020–March 29, 2022

Appendix

Appendix Table 1. Estimated accessibility of adult COVID-19 vaccine by 2013 CDC Urban-Rural Classification

| Modality | Urban-Rural Classification | 15 min. | 30 min. | 45 min. | 60 min. |
|----------|----------------------------|---------|---------|---------|---------|
| Walking | Large Central Metro | 65.1% | 91.7% | 96.2% | 97.7% |
| | Large Fringe Metro | 41.0% | 73.4% | 83.5% | 88.4% |
| | Medium Metro | 40.3% | 71.3% | 81.3% | 86.3% |
| | Small Metro | 35.3% | 62.3% | 72.0% | 77.8% |
| | Micropolitan | 30.7% | 52.4% | 60.9% | 66.5% |
| | Non-core | 27.2% | 43.1% | 48.6% | 52.7% |
| Driving | Large Central Metro | 99.5% | 99.9% | 99.9% | 99.9% |
| | Large Fringe Metro | 97.9% | 99.8% | 99.9% | 100.0% |
| | Medium Metro | 97.2% | 99.6% | 99.8% | 99.8% |
| | Small Metro | 94.5% | 99.2% | 99.6% | 99.8% |
| | Micropolitan | 89.6% | 98.4% | 99.4% | 99.6% |
| | Non-core | 79.9% | 95.9% | 98.4% | 99.0% |

Appendix Table 2. Estimated accessibility of adult COVID-19 vaccine by jurisdiction

| State | Walking | | | | Driving | | | |
|----------------------|---------|---------|---------|---------|---------|---------|---------|---------|
| | 15 Min. | 30 Min. | 45 Min. | 60 Min. | 15 Min. | 30 Min. | 45 Min. | 60 Min. |
| Alabama | 26.8% | 54.6% | 66.0% | 72.6% | 91.1% | 98.9% | 99.8% | 100.0% |
| Alaska | 33.2% | 63.4% | 72.2% | 77.0% | 88.0% | 91.9% | 91.8% | 92.4% |
| Arizona | 49.1% | 81.0% | 88.0% | 91.3% | 96.5% | 98.9% | 99.4% | 99.6% |
| Arkansas | 34.0% | 63.1% | 71.7% | 76.2% | 91.9% | 98.7% | 99.8% | 99.9% |
| California | 58.6% | 87.3% | 92.6% | 94.7% | 98.3% | 99.5% | 99.7% | 99.8% |
| Colorado | 50.3% | 81.9% | 88.1% | 91.2% | 96.9% | 98.8% | 99.3% | 99.7% |
| Connecticut | 42.0% | 71.0% | 83.1% | 89.9% | 99.1% | 100.0% | 100.0% | 100.0% |
| Delaware | 44.5% | 71.7% | 80.4% | 86.2% | 99.4% | 99.9% | 99.9% | 99.9% |
| District of Columbia | 94.7% | 99.6% | 99.6% | 99.6% | 99.6% | 100.0% | 100.0% | 100.0% |
| Florida | 44.8% | 75.3% | 85.1% | 89.5% | 97.8% | 99.5% | 99.7% | 99.8% |
| Georgia | 28.7% | 59.3% | 72.6% | 79.8% | 95.8% | 99.6% | 99.8% | 99.8% |
| Hawaii | 43.4% | 70.3% | 79.6% | 84.6% | 93.7% | 96.0% | 96.2% | 96.4% |
| Idaho | 40.3% | 72.2% | 79.8% | 83.3% | 94.7% | 98.4% | 99.2% | 99.5% |
| Illinois | 52.9% | 81.0% | 87.4% | 90.2% | 96.7% | 99.7% | 100.0% | 100.0% |
| Indiana | 34.3% | 65.8% | 75.6% | 80.2% | 95.2% | 99.9% | 100.0% | 100.0% |
| Iowa | 50.2% | 75.4% | 79.7% | 81.8% | 94.2% | 99.8% | 100.0% | 100.0% |
| Kansas | 45.7% | 77.7% | 84.0% | 86.9% | 95.2% | 99.2% | 99.9% | 100.0% |
| Kentucky | 33.6% | 59.9% | 69.1% | 74.1% | 93.7% | 99.5% | 99.9% | 100.0% |
| Louisiana | 37.8% | 64.0% | 73.2% | 78.9% | 94.6% | 99.3% | 99.8% | 99.9% |
| Maine | 32.7% | 48.6% | 56.5% | 63.0% | 88.2% | 98.3% | 99.3% | 99.4% |
| Maryland | 46.8% | 75.7% | 84.5% | 89.1% | 98.3% | 99.7% | 99.9% | 99.9% |
| Massachusetts | 56.8% | 81.1% | 90.2% | 94.6% | 99.5% | 99.9% | 100.0% | 100.0% |
| Michigan | 44.0% | 71.1% | 79.3% | 83.6% | 96.4% | 99.7% | 99.9% | 99.9% |
| Minnesota | 39.9% | 71.7% | 79.3% | 82.5% | 94.6% | 99.4% | 99.8% | 99.9% |
| Mississippi | 28.8% | 54.3% | 64.1% | 70.2% | 90.0% | 98.7% | 99.8% | 100.0% |
| Missouri | 35.5% | 69.5% | 78.4% | 82.3% | 94.2% | 99.4% | 99.9% | 100.0% |
| Montana | 41.6% | 63.1% | 70.1% | 74.7% | 88.5% | 94.7% | 96.6% | 97.7% |
| Nebraska | 46.9% | 80.1% | 84.5% | 85.7% | 93.9% | 99.0% | 99.6% | 99.8% |

| State | Walking | | | | Driving | | | |
|----------------|---------|---------|---------|---------|---------|---------|---------|---------|
| | 15 Min. | 30 Min. | 45 Min. | 60 Min. | 15 Min. | 30 Min. | 45 Min. | 60 Min. |
| Nevada | 51.7% | 85.8% | 91.7% | 94.0% | 98.2% | 99.3% | 99.6% | 99.6% |
| New Hampshire | 29.7% | 52.1% | 65.0% | 74.1% | 94.1% | 99.4% | 99.8% | 100.0% |
| New Jersey | 57.0% | 84.9% | 92.0% | 95.4% | 99.5% | 99.9% | 99.9% | 100.0% |
| New Mexico | 41.6% | 71.9% | 79.6% | 84.3% | 95.3% | 98.6% | 99.3% | 99.6% |
| New York | 74.3% | 87.8% | 91.5% | 93.7% | 98.9% | 99.9% | 100.0% | 100.0% |
| North Carolina | 28.4% | 57.0% | 69.0% | 75.7% | 94.5% | 99.4% | 99.8% | 99.9% |
| North Dakota | 53.3% | 74.7% | 78.6% | 80.2% | 87.3% | 96.0% | 98.7% | 99.5% |
| Ohio | 39.1% | 70.7% | 80.2% | 84.5% | 97.4% | 100.0% | 100.0% | 100.0% |
| Oklahoma | 40.8% | 68.7% | 75.4% | 79.5% | 93.0% | 98.9% | 99.8% | 100.0% |
| Oregon | 50.0% | 78.3% | 84.1% | 86.6% | 96.2% | 99.0% | 99.6% | 99.7% |
| Pennsylvania | 49.4% | 73.6% | 82.0% | 86.7% | 97.7% | 99.8% | 100.0% | 100.0% |
| Rhode Island | 55.5% | 81.2% | 88.5% | 92.1% | 99.4% | 99.8% | 99.9% | 100.0% |
| South Carolina | 25.9% | 54.4% | 67.7% | 75.8% | 93.7% | 99.2% | 99.4% | 99.5% |
| South Dakota | 41.3% | 67.7% | 73.2% | 75.8% | 87.9% | 95.1% | 97.9% | 98.7% |
| Tennessee | 28.4% | 59.2% | 71.5% | 78.4% | 94.5% | 99.5% | 99.9% | 99.9% |
| Texas | 45.3% | 77.6% | 84.8% | 88.0% | 96.6% | 99.5% | 99.9% | 100.0% |
| Utah | 43.0% | 81.4% | 89.7% | 92.1% | 97.8% | 99.4% | 99.6% | 99.8% |
| Vermont | 34.1% | 50.4% | 57.1% | 62.6% | 86.5% | 97.7% | 99.1% | 99.7% |
| Virginia | 40.3% | 72.6% | 81.7% | 86.0% | 96.9% | 99.6% | 99.8% | 99.9% |
| Washington | 43.7% | 71.8% | 80.7% | 85.4% | 96.1% | 99.0% | 99.5% | 99.7% |
| West Virginia | 30.6% | 52.3% | 62.6% | 69.5% | 92.6% | 99.1% | 99.7% | 99.9% |
| Wisconsin | 44.9% | 70.3% | 76.6% | 80.3% | 95.3% | 99.6% | 99.9% | 100.0% |
| Wyoming | 39.4% | 64.4% | 72.2% | 76.7% | 88.4% | 92.9% | 95.7% | 98.1% |
| National | 46.6% | 74.8% | 82.8% | 86.7% | 96.5% | 99.4% | 99.7% | 99.8% |

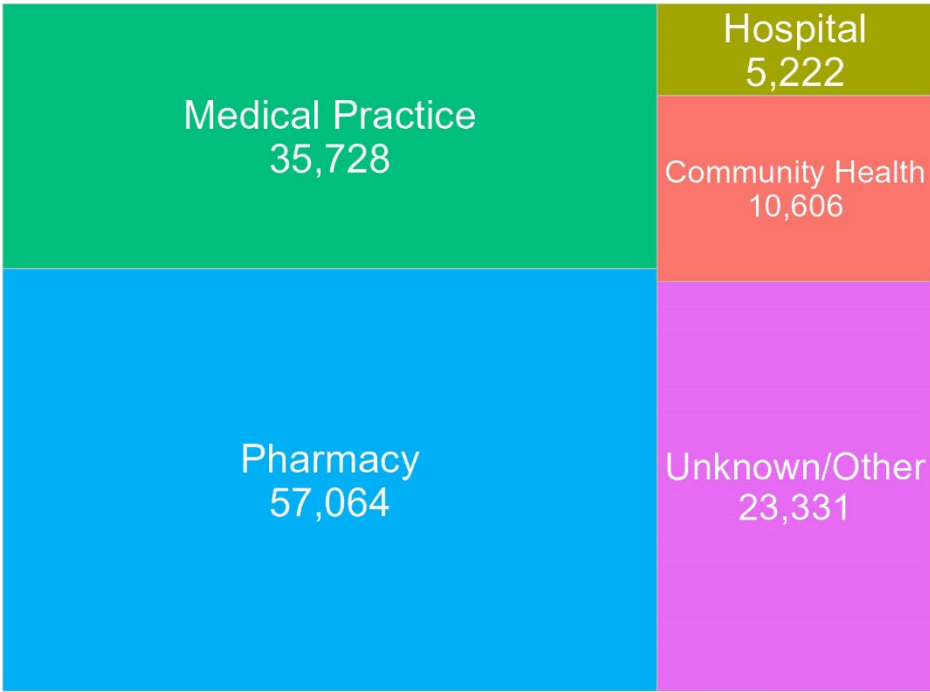
Appendix Table 3. Estimated high SVI accessibility (SVI > 0.5) of adult COVID-19 vaccine by jurisdiction

| State | Walking | | | | Driving | | | |
|----------------------|---------|---------|---------|---------|---------|---------|---------|---------|
| | 15 Min. | 30 Min. | 45 Min. | 60 Min. | 15 Min. | 30 Min. | 45 Min. | 60 Min. |
| Alabama | 30.3% | 59.0% | 68.6% | 74.4% | 91.4% | 98.9% | 99.8% | 100.0% |
| Alaska | 41.7% | 73.8% | 78.1% | 80.0% | 86.5% | 88.1% | 87.8% | 88.0% |
| Arizona | 54.9% | 82.9% | 88.3% | 90.9% | 96.1% | 98.6% | 99.4% | 99.7% |
| Arkansas | 38.1% | 68.8% | 76.4% | 80.0% | 93.1% | 98.7% | 99.8% | 99.9% |
| California | 64.4% | 90.1% | 94.0% | 95.6% | 98.6% | 99.7% | 99.8% | 99.9% |
| Colorado | 60.4% | 88.5% | 92.5% | 94.2% | 97.4% | 98.8% | 99.2% | 99.7% |
| Connecticut | 71.4% | 94.9% | 98.3% | 99.3% | 99.9% | 100.0% | 100.0% | 100.0% |
| Delaware | 49.3% | 72.5% | 78.8% | 84.2% | 99.3% | 99.8% | 99.9% | 100.0% |
| District of Columbia | 93.5% | 100.0% | 100.0% | 100.0% | 100.0% | 100.0% | 100.0% | 100.0% |
| Florida | 52.8% | 80.8% | 87.8% | 91.0% | 98.0% | 99.6% | 99.9% | 99.9% |
| Georgia | 33.2% | 64.4% | 75.6% | 81.5% | 96.1% | 99.8% | 100.0% | 100.0% |
| Hawaii | 54.9% | 76.3% | 84.9% | 88.8% | 95.3% | 97.5% | 98.3% | 98.6% |
| Idaho | 48.0% | 75.3% | 81.9% | 84.7% | 94.9% | 98.3% | 99.2% | 99.5% |
| Illinois | 66.2% | 90.4% | 94.2% | 95.6% | 98.5% | 99.9% | 100.0% | 100.0% |
| Indiana | 49.4% | 82.6% | 88.5% | 90.7% | 98.0% | 99.9% | 100.0% | 100.0% |
| Iowa | 63.9% | 89.6% | 93.4% | 95.0% | 98.4% | 99.9% | 100.0% | 100.0% |
| Kansas | 55.4% | 87.9% | 93.4% | 95.3% | 98.1% | 99.7% | 99.9% | 100.0% |
| Kentucky | 38.8% | 63.5% | 71.0% | 75.3% | 93.6% | 99.3% | 99.8% | 100.0% |
| Louisiana | 38.9% | 64.9% | 73.5% | 78.7% | 94.3% | 99.3% | 99.7% | 99.8% |
| Maine | 49.4% | 64.5% | 68.9% | 72.8% | 89.3% | 98.1% | 99.2% | 99.4% |
| Maryland | 65.4% | 91.0% | 95.1% | 96.6% | 99.4% | 100.0% | 100.0% | 100.0% |
| Massachusetts | 83.0% | 97.4% | 99.1% | 99.6% | 100.0% | 100.0% | 100.0% | 100.0% |
| Michigan | 54.9% | 81.8% | 87.0% | 89.3% | 96.8% | 99.7% | 99.9% | 99.9% |
| Minnesota | 57.5% | 85.9% | 90.1% | 91.7% | 96.8% | 99.4% | 99.8% | 99.9% |
| Mississippi | 32.6% | 58.0% | 66.1% | 71.1% | 89.1% | 98.5% | 99.8% | 100.0% |
| Missouri | 40.2% | 73.9% | 81.2% | 84.5% | 94.4% | 99.4% | 99.9% | 100.0% |
| Montana | 57.9% | 78.4% | 81.5% | 83.4% | 91.1% | 95.5% | 97.1% | 97.9% |
| Nebraska | 52.9% | 86.8% | 91.8% | 93.1% | 96.8% | 99.5% | 99.8% | 99.9% |
| Nevada | 63.8% | 92.2% | 94.8% | 95.9% | 98.7% | 99.3% | 99.7% | 99.7% |
| New Hampshire | 59.9% | 81.3% | 87.0% | 89.8% | 97.5% | 99.3% | 99.6% | 100.0% |
| New Jersey | 80.4% | 95.2% | 97.3% | 98.2% | 99.7% | 99.9% | 99.9% | 100.0% |
| New Mexico | 43.5% | 72.2% | 79.3% | 83.8% | 95.4% | 98.6% | 99.3% | 99.6% |
| New York | 88.1% | 94.5% | 95.7% | 96.4% | 99.2% | 99.9% | 100.0% | 100.0% |
| North Carolina | 29.6% | 57.0% | 67.7% | 73.9% | 94.1% | 99.5% | 99.9% | 99.9% |
| North Dakota | 69.4% | 87.3% | 90.8% | 92.3% | 95.4% | 98.7% | 99.4% | 99.7% |
| Ohio | 51.0% | 83.1% | 88.9% | 91.2% | 97.9% | 100.0% | 100.0% | 100.0% |
| Oklahoma | 44.1% | 72.0% | 77.5% | 80.4% | 92.0% | 98.5% | 99.7% | 100.0% |

| State | Walking | | | | Driving | | | |
|-----------------|--------------|--------------|--------------|--------------|--------------|--------------|--------------|--------------|
| | 15 Min. | 30 Min. | 45 Min. | 60 Min. | 15 Min. | 30 Min. | 45 Min. | 60 Min. |
| Oregon | 55.4% | 82.3% | 87.1% | 89.2% | 96.7% | 98.8% | 99.4% | 99.6% |
| Pennsylvania | 70.3% | 86.4% | 89.8% | 91.7% | 98.0% | 99.8% | 100.0% | 100.0% |
| Rhode Island | 80.7% | 98.2% | 99.5% | 99.6% | 99.7% | 99.8% | 99.8% | 100.0% |
| South Carolina | 28.1% | 55.3% | 66.6% | 73.7% | 93.4% | 99.6% | 99.8% | 99.9% |
| South Dakota | 50.4% | 78.4% | 82.9% | 84.5% | 90.9% | 94.4% | 97.1% | 98.2% |
| Tennessee | 35.3% | 68.7% | 78.9% | 83.3% | 95.5% | 99.3% | 99.9% | 99.9% |
| Texas | 46.9% | 78.4% | 85.2% | 88.2% | 96.8% | 99.5% | 99.9% | 99.9% |
| Utah | 53.2% | 88.4% | 92.7% | 93.4% | 97.2% | 99.2% | 99.6% | 99.7% |
| Vermont | 56.9% | 73.3% | 78.7% | 82.1% | 93.7% | 99.1% | 99.5% | 99.9% |
| Virginia | 46.7% | 76.7% | 83.3% | 86.7% | 97.0% | 99.8% | 99.9% | 99.9% |
| Washington | 54.8% | 81.0% | 86.7% | 89.6% | 96.4% | 98.9% | 99.5% | 99.7% |
| West Virginia | 34.8% | 57.1% | 65.7% | 72.0% | 92.3% | 98.8% | 99.6% | 99.9% |
| Wisconsin | 64.4% | 86.3% | 89.4% | 90.8% | 96.8% | 99.6% | 100.0% | 100.0% |
| Wyoming | 46.2% | 70.4% | 81.8% | 85.3% | 92.9% | 96.8% | 98.7% | 99.4% |
| Alabama | 30.3% | 59.0% | 68.6% | 74.4% | 91.4% | 98.9% | 99.8% | 100.0% |
| National | 55.3% | 81.1% | 86.7% | 89.4% | 97.0% | 99.5% | 99.8% | 99.9% |



Appendix Figure 1. Provider site categories. * indicates site excluded from analysis.



Appendix Figure 2. Total provider sites (n=131,951) by provider category.