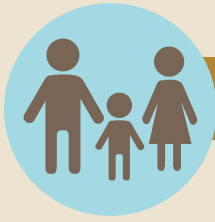
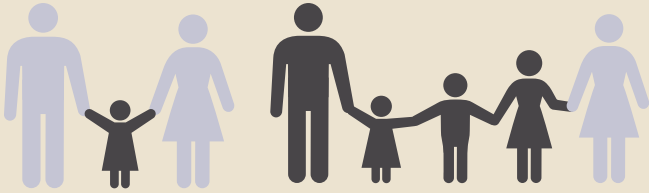


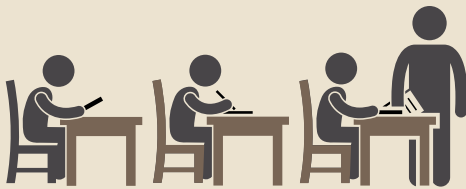
Cost of the Ebola Epidemic



Impact of Ebola on Children



17,300 children lost one or both parents to Ebola



More than **33 weeks** of education were lost due to school closures



30% decline in childhood vaccination coverage

Children were greatly affected by the Ebola epidemic. Nearly 20% of all Ebola cases occurred in children under 15 years old. Figures from the Guinea¹¹, Liberia¹², and Sierra Leone¹³ recovery plans estimate that more than 17,300 children have been orphaned because of Ebola. In June 2014, all schools in Guinea, Liberia, and Sierra Leone closed because of the epidemic. By the time the schools reopened in 2015, students had lost approximately 1,848 hours of education due to school closures, ranging from around 33 weeks in Guinea to 39 weeks in Sierra Leone.¹⁴ Children also experienced a gap in vaccination schedules as routine immunizations decreased by 30% when funding and logistics previously dedicated to vaccination campaigns were redirected to fight the epidemic or were postponed to avoid public gatherings.¹⁵

¹¹2015. "Guinea: Post-Ebola Socio-economic Recovery and Resilience Strategy 2015-2017." Document of the Government of the Republic of Guinea. Accessed January 20, 2016.

¹²2015. "The Economic Stabilization and Recovery Plan." Republic of Liberia

¹³2015. "National Ebola Recovery Strategy for Sierra Leone 2015-2017." Government of Sierra Leone.

¹⁴United Nations Development Group (UNDG) - Western and Central Africa. 2015. "Socio-Economic Impact of Ebola Virus Disease in West African Countries: A call for national and regional containment, recovery and prevention." Accessed December 23, 2015. <http://www.africa.undp.org/content/dam/rba/docs/Reports/ebola-west-africa.pdf>.

¹⁵UNDP. 2014. "Assessing the socio-economic impacts of Ebola Virus Disease in Guinea, Liberia and Sierra Leone: The Road to Recovery." Accessed December 22, 2015. <http://www.africa.undp.org/content/dam/rba/docs/Reports/EVD%20Synthesis%20Report%2023Dec2014.pdf>.