

## Births: Final Data for 2022

by Michelle J.K. Osterman, M.H.S., Brady E. Hamilton, Ph.D., Joyce A. Martin, M.P.H., Anne K. Driscoll, Ph.D., and Claudia P. Valenzuela, M.P.H.

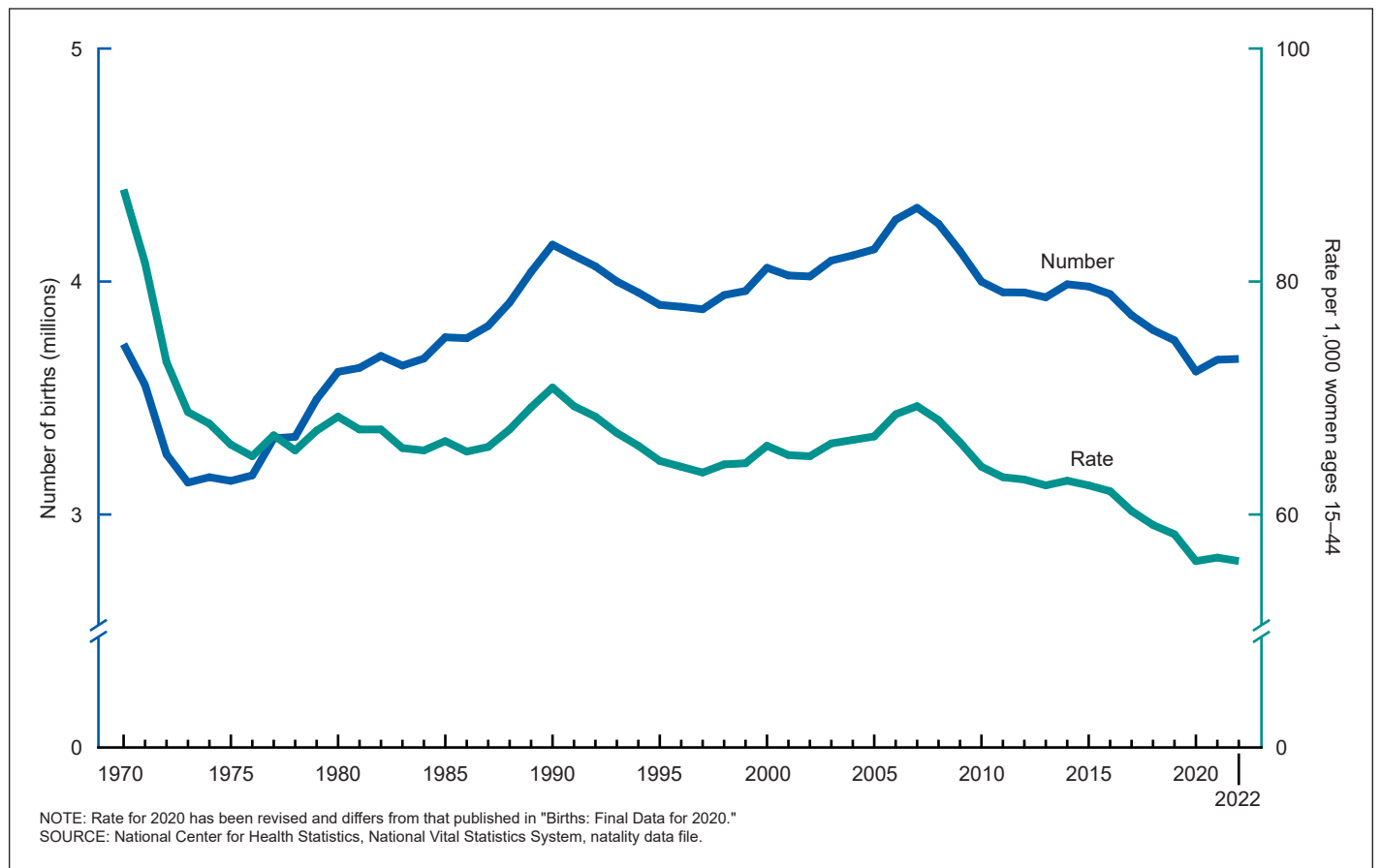
### Abstract

**Objectives**—This report presents 2022 data on U.S. births by selected characteristics. Trends in fertility patterns and maternal and infant characteristics are described.

**Methods**—Descriptive tabulations based on birth certificates of the 3.67 million births registered in 2022 are shown by

maternal age, live-birth order, race and Hispanic origin, marital status, tobacco use, prenatal care, source of payment for the delivery, method of delivery, gestational age, birthweight, and plurality. Selected data by mother's state of residence and birth rates also are shown. Trends for 2010 to 2022 are presented for selected items, and by race and Hispanic origin for 2016–2022.

**Figure 1. Live births and general fertility rate: United States, 1970–2022**



**Results**—A total of 3,667,758 births occurred in the United States in 2022, essentially unchanged from 2021. The general fertility rate declined 1% from 2021 to 56.0 births per 1,000 females ages 15–44 in 2022. The birth rate for females ages 15–19 declined 2% from 2021 to 2022; birth rates fell 7% for women ages 20–24, rose 1% to 5% for women ages 25–29 and 35–44, and rose 12% for women ages 45–49 (the first increase since 2016). The total fertility rate declined less than 1% to 1,656.5 births per 1,000 women in 2022. Birth rates declined for unmarried women but increased for married women from 2021 to 2022. Prenatal care beginning in the first trimester declined to 77.0% in 2022; the percentage of women who smoked during pregnancy declined to 3.7%. The cesarean delivery rate was unchanged in 2022 (32.1%); Medicaid was the source of payment for 41.3% of births. The preterm birth rate declined 1% to 10.38%; the low birthweight rate rose 1% to 8.60%. The twin birth rate was unchanged in 2022 (31.2 per 1,000 births); the 2% decrease in the triplet and higher-order multiple birth rate was not significant.

**Keywords:** birth certificate • maternal and infant health • birth rates • maternal characteristics • National Vital Statistics System

## Introduction

This report presents detailed data on numbers and characteristics of births in 2022, birth and fertility rates, maternal demographic and health characteristics, medical and health care utilization, source of payment for the delivery, and infant health characteristics. Reports of provisional birth statistics for 2022 that presented overall and monthly data on selected topics are based on a sample of nearly all 2022 births (99.91%) (1,2); a National Center for Health Statistics *Data Brief* presented selected characteristics based on final data for 2022 births (3).

In addition to the tabulations included in this report, more detailed analysis is possible by using the annual natality public-use file. The data file may be downloaded from: [https://www.cdc.gov/nchs/data\\_access/Vitalstatsonline.htm](https://www.cdc.gov/nchs/data_access/Vitalstatsonline.htm) (4). The public-use file does not include geographic detail; a file with this information may be available by request (5). Birth data may also be accessed through the Centers for Disease Control and Prevention's Wide-ranging Online Data for Epidemiologic Research (CDC WONDER). CDC WONDER is a user-friendly web-based data query system that makes several Centers for Disease Control and Prevention information resources available to public health professionals and the public (6).

## 2003 revision of U.S. Standard Certificate of Live Birth

Starting in 2016, all 50 states, the District of Columbia (D.C.), Puerto Rico, Guam, Commonwealth of the Northern Marianas (Northern Marianas), and U.S. Virgin Islands reported data based on the 2003 U.S. Certificate of Live Birth. American Samoa continued to report based on the 1989 birth certificate revision.

Detailed tables of many topics are included in this report. Internet-only tables on several additional topics, such as births by attendant and place and delivery, mean age of mother by live-birth order, maternal prepregnancy body mass index, infections during pregnancy, and maternal morbidity, are also available; see [List of Internet Tables](#). For information on data quality, see reports that assessed the quality of selected medical and health data from the 2003 revised birth certificate and the “User Guide to the 2022 Natality Public Use File” (7–9).

## Methods

Data shown in this report are based on 100% of the birth certificates registered in all states and D.C. to U.S. residents. More than 99% of births occurring in the United States are registered (9). Tables showing data by state also provide separate information for Puerto Rico, Guam, U.S. Virgin Islands, and Northern Marianas. These areas, however, are not included in totals for the United States. Data for American Samoa were not available for 2022.

The 2003 revision of the U.S. Standard Certificate of Live Birth allows the reporting of more than one race (multiple races) for each parent (10), according to the revised standards issued by the Office of Management and Budget in 1997 (11). Starting in 2016, all 50 states, D.C., Puerto Rico, Guam, Northern Marianas, and U.S. Virgin Islands reported race data according to these standards that allow for the reporting of a minimum of five race categories, either by single race (reported alone) or in combination (more than one race or multiple races) (11). The race and Hispanic-origin groups shown in this report follow the 1997 standards and differ from the bridged-race categories shown in most previous reports that are based on data from 2015 and earlier (12). The categories are Hispanic; American Indian and Alaska Native, non-Hispanic single race (subsequently, American Indian and Alaska Native); Asian, non-Hispanic single race (subsequently, Asian); Black or African American, non-Hispanic single race (subsequently, Black); Native Hawaiian and Other Pacific Islander, non-Hispanic single race (subsequently, Native Hawaiian and Other Pacific Islander); and White, non-Hispanic single race (subsequently, White). Because single-race data are not available for the entire United States before 2016, only race data for 2016–2022 are shown in this report. For more information on differences between single- and bridged-race groups, see “Births: Final Data for 2016” (13).

Race and Hispanic origin are reported independently on the birth certificate, and reporting of Hispanic-origin ethnicity was not affected by the change to the 1997 Office of Management and Budget standards. Most tables in this report show data for the categories White, Black, and Hispanic. Selected tables also include data for the categories American Indian and Alaska Native, Asian, and Native Hawaiian and Other Pacific Islander. Data are also presented in some tables for specific Hispanic groups: Central and South American, Cuban, Dominican, Mexican, Puerto Rican, and other and unknown Hispanic (includes Hispanic origins not categorized, including Spaniards). Before 2018, data for the Dominican subgroup had been included in the category other and unknown Hispanic.

Trend tables included in the detailed tables for this report cover the 2010–2022 period; see [List of Detailed Tables](#). Longer-term trends previously shown in this report series can be found in earlier reports (for example, “Births: Final Data for 2015”) (12).

In this report, the total number of births includes births to women up to age 64. In tables that include age of mother, the oldest age groups shown (40–54, 45–49, 45–54, or 50–54) include births to mothers up to age 64 (births to mothers 55–64 are included in the 50–54 age group).

For information on levels of incomplete reporting by state, see the 2022 User Guide (9). For information on the measurement of data items shown in this report and in the Internet Tables, imputation techniques used, computation of derived statistics, and definitions of terms, see the 2022 User Guide (9).

Birth and fertility rates for 2020 shown in this report have been revised and may differ from those published in “Births: Final Data for 2020” and elsewhere (14). Previously published birth and fertility rates for 2020 were based on postcensal population estimates derived from the 2010 census. The revised rates shown here are based on the blended base population estimates produced by the U.S. Census Bureau instead of the April 1, 2020, decennial population counts (Technical Notes).

## Demographic Characteristics (Tables 1–12)

### Births and birth rates

#### Number of births

In 2022, 3,667,758 births were registered in the United States, essentially unchanged from 2021 (3,664,292). This follows an increase of 1% from 2020 to 2021, and a decline of 4% from 2019 to 2020 ([Table 1](#), [Figure 1](#)). From 2014 to 2019, the number of births had declined by an average of 1% per year. Previously, the number of births declined by an average 2% per year from 2007 to 2013 and increased 1% in 2014 (12).

Among race and Hispanic-origin groups, the number of births rose 2% for Asian and 6% for both Native Hawaiian and Other Pacific Islander and Hispanic women from 2021 to 2022, and declined 1% for Black and 2% for White women ([Tables 1](#), [3](#), and [6](#)). The change in the number of births for American Indian and Alaska Native women was not significant. Among specified Hispanic groups, births rose 17% for Central and South American, 8% for Cuban, and 5% for Mexican women, and declined 2% for Puerto Rican women ([Tables 4](#) and [7](#)). The change in the number of births for Dominican women was not significant.

#### Fertility rate

The **general fertility rate** (GFR) for the United States in 2022 was 56.0 births per 1,000 females ages 15–44, down 1% from 2021 (56.3) ([Table 1](#)). Before this, the GFR increased from 2020 to 2021 after declining steadily by an average 2% from 2014 through 2020, including a 4% decline from 2019 to 2020.

From 2007 to 2013, the GFR declined steadily by an average 2% per year and then increased 1% from 2013 to 2014 (12).

Among the race and Hispanic-origin groups, the GFR rose 5% for Native Hawaiian and Other Pacific Islander and 4% for Hispanic women from 2021 to 2022, and declined 2% for both Black and White women ([Table 1](#)). The rate for both American Indian and Alaska Native and Asian women was essentially unchanged.

### Age of mother

Birth rates declined for females ages 15–24, rose for those ages 25–29 and 35–49, and were unchanged for ages 10–14 and 30–34 from 2021 to 2022.

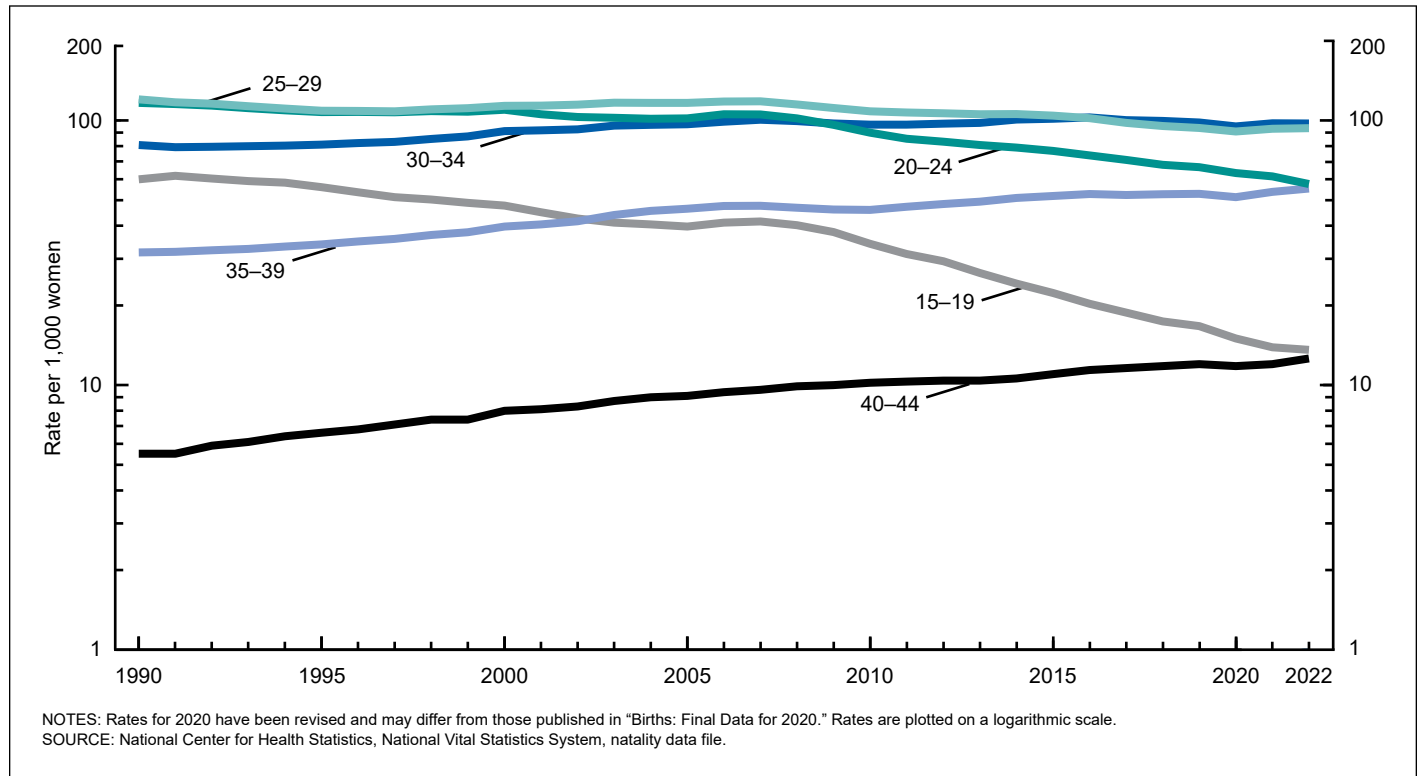
**Teenagers**—The birth rate for females ages 15–19 in the United States in 2022 was 13.6 births per 1,000, down 2% from 2021 (13.9) and another record low ([Table 2](#), [Figure 2](#)) (12,15,16). Since 2009, the teen birth rate has fallen to a new low each year. The rate for this group has declined 67% since 2007 (41.5), the most recent high, and 78% since the 1991 high (61.8). The number of births to teenagers ages 15–19 was 143,789 in 2022, also down 2% from 2021 (146,973) (15).

The 2022 birth rate for teenagers ages 15–17 was unchanged at 5.6 births per 1,000 females; the rate for those ages 18–19 was 25.8 births, down 3% from 2021 and another record low. Rates for these age groups have fallen 74% and 64%, respectively, since 2007, and by 85% and 73% since 1991. The birth rate for females ages 10–14 was unchanged in 2022 at 0.2 births per 1,000 females.

Among race and Hispanic-origin groups, birth rates for teenagers ages 15–19 declined for most groups, down 7% for both Black and American Indian and Alaska Native females and 3% for White females from 2021 to 2022. The rate for Hispanic females rose 1% in 2022. The change in rates for Asian and Native Hawaiian and Other Pacific Islander females was not significant.

**Women in their 20s**—The birth rate for women ages 20–24 was 57.5 births per 1,000 women in 2022, down 7% from 2021 (61.5) and another record low ([Table 2](#)) (12,16). The rate for women in this age group has declined since 2006. The number of births to women in their early 20s declined 2% from 2021 (15). The rate for women ages 25–29 was 93.5 births per 1,000 women, up 1% from 2021 (93.0). The overall rate for women in this age group has declined for all but 3 years from 2007 to 2022 (12). The number of births to women ages 25–29 declined 1% from 2021 to 2022 (see “Births: Final Data for 2021” [Tables 3](#) and [4](#) for 2021 data) (15).

**Women in their 30s**—The birth rate for women ages 30–34 was 97.5 births per 1,000 women in 2022, essentially unchanged from 2021 (97.6); this follows an increase in 2021 after annual declines in the rate from 2017 to 2020 ([Table 2](#)). The 2022 rate for women ages 30–34 was higher than the rate for women ages 25–29 for the seventh consecutive year since reliable national records were available (1940) (12,16). The number of births to women ages 30–34 rose less than 1% from 2021 to 2022. The birth rate for women ages 35–39 was 55.3 births per 1,000 women in 2022, up 3% from 2021 (53.7) ([Table 2](#)). The number

**Figure 2. Birth rate, by selected age of mother: United States, 1990–2022**

of births to women ages 35–39 rose 2% in 2022 (see "Births: Final Data for 2021" [Tables 3](#) and [4](#) for 2021 data) (15).

**Women in their 40s**—The birth rate for women ages 40–44 was 12.6 births per 1,000 women in 2022, up 5% from 2021 (12.0) ([Table 2](#)); this is the second increase in the rate for this group following a decline in 2020 (12.16). The number of births to women in their early 40s rose 6% from 2021 to 2022. The birth rate for women ages 45–49 (includes births to women age 50 and older) was 1.1 in 2022, up from 0.9 births per 1,000 women in 2021 and the first change in the rate since 2016. The number of births to women age 45 and older rose 12% from 2021 to 2022.

**Women age 50 and older**—The birth rate for women ages 50–54 was 1.2 births per 10,000 women in 2022, up from 1.0 in 2021. Because of the small number of births to women in this age group, the birth rate for women ages 50–54 is expressed per 10,000 women. For rates shown elsewhere in this report, births to women age 50 and older are included with births to women ages 45–49 when computing birth rates by age of mother (the denominator for the rate is women ages 45–49). A total of 1,230 births were to women age 50 and older in 2022, up from 1,041 in 2021 ([Table 3](#)) (15). The number of births to women in this age group has generally increased since 1997, when 144 births were reported.

## Live-birth order

The first-birth rate for the United States was 21.6 births per 1,000 females ages 15–44 in 2022, up less than 1% from 2021 (21.5) (see [Tables 3](#) and [4](#) for the number of births and [Table 5](#) for birth rates) (15). First-birth rates declined for females

in their teens (2% for females ages 15–19) and early 20s (4% for women ages 20–24) and rose for women in their late 20s (3% for ages 25–29), 30s (1% for ages 30–34 and 5% for ages 35–39), and early 40s (8% for ages 40–44). The first-birth rate was unchanged for females ages 10–14 (0.2) and 45–49 (0.3) in 2022 (15).

## Mean age of mother

In 2022, the mean age of mothers at first birth was 27.4 years, an increase from 27.3 in 2021 and another record high for the nation ([Tables 11](#), [12](#), and [I-6](#)) (12,16). The mean age at first birth is the arithmetic average of the age of mothers at the time of birth and is computed directly from the frequency of first births by age of mother. The increase in the mean age in 2022 reflects, in part, the decline in the number of first births to females in their teens and early 20s and the concurrent rise in first births to women in their late 20s, 30s, and 40s (15).

Mean age at first birth increased for nearly all race and Hispanic-origin groups in 2022, rising to 24.2 for American Indian and Alaska Native, 25.7 for Hispanic, 25.8 for Black, 28.2 for White, and 31.4 for Asian women (15). The average age at first birth for Native Hawaiian and Other Pacific Islander women, 25.2, was unchanged from 2021. Among the specified Hispanic groups, average age increased to 25.1 for Mexican, 25.7 for Puerto Rican, 26.8 for Dominican, and 28.5 for Cuban women (15). The age at first birth for Central and South American women declined in 2022 to 26.2.

## Total fertility rate

The **total fertility rate** (TFR) for the United States in 2022 was 1,656.5 births per 1,000 women, down less than 1% from 2021 (1,664.0) (Table 2). This decline follows a 2-year increase in the TFR in 2020 and 2021 and a 4% decline from 2019 to 2020. The rate had declined by an average 2% per year both from 2014 to 2019 and from 2007 to 2013. TFR estimates the number of births that a hypothetical group of 1,000 women would have over their lifetimes, based on age-specific birth rates in a given year. Because it is calculated from age-specific birth rates, TFR is age adjusted and can be compared for populations across time, population groups, and geographic areas.

Among race and Hispanic-origin groups, the TFR rose 4% for Hispanic and 5% for Native Hawaiian and Other Pacific Islander women from 2021 to 2022, and declined 2% for both Black and White women. The rate for both American Indian and Alaska Native and Asian women was essentially unchanged.

The TFR for the nation in 2022 remained below replacement, the level at which a given generation can exactly replace itself (generally considered to be 2,100 births per 1,000 women). The U.S. TFR has generally been below replacement since 1971 and has consistently been below replacement since 2008 (12,16). The TFR was below replacement for all race and Hispanic-origin groups in 2022 except for Native Hawaiian and Other Pacific Islander women (2,237.5 births) (Table 2).

## Births and birth rates by state

GFR, the number of births per 1,000 females ages 15–44, declined in 28 states and D.C. from 2021 to 2022 and rose in 3 states. Decreases of 1%–2% were reported in 15 states (Alabama, Arizona, Arkansas, Colorado, Illinois, Iowa, Louisiana, Mississippi, Missouri, New York, North Carolina, Ohio, Oklahoma, Virginia, and Washington), of 3%–4% in 12 states (Connecticut, Idaho, Michigan, Montana, Nevada, New Hampshire, Oregon, Pennsylvania, South Dakota, Utah, Wisconsin, and Wyoming), and of 7%–8% in 1 state (North Dakota) and D.C. Increases of 1%–2% were reported for Florida, New Jersey, and Texas. GFRs were essentially unchanged in the remaining 19 states. Rates among the states ranged from 44.3 births per 1,000 females ages 15–44 in Vermont to 66.5 in South Dakota. (See Tables 6 and 7 for the number of births and Table 8 for birth rates). Among the U.S. territories, GFR declined in Northern Marianas; changes in the rate for Puerto Rico, U.S. Virgin Islands, and Guam were not significant. For the number of births by state in 2022, see Tables 6 and 7 (15).

## Birth rates for teenagers by state

In 2022, the birth rate for teenagers ages 15–19 declined in 13 states (Alabama, Arkansas, Connecticut, Florida, Idaho, Michigan, Nevada, New York, North Carolina, Oklahoma, Pennsylvania, South Carolina, and Utah), with declines ranging from 3% for Florida to 12% for Oklahoma. Rates were essentially unchanged in the remaining 37 states and D.C. Rates among the states ranged from 4.6 births per 1,000 in New Hampshire to 26.4 in Mississippi (Table 8). The wide range in state-specific

teen birth rates is consistent with patterns observed in previous analyses (17,18). Teen birth rates were essentially unchanged for all of the territories. Rates among the territories ranged from 9.4 births per 1,000 teenagers in Northern Marianas to 19.8 in Guam.

## Births to unmarried women

The birth rate for unmarried women was 37.2 births per 1,000 unmarried females ages 15–44 in 2022, down 2% from 2021 (37.8) (Table 10). The 2022 nonmarital birth rate was 28% lower than the peak of 51.8 in 2007 and 2008 (12). (See Technical Notes for a description of the adjustments to calculations of rates by marital status beginning with 2017 data.)

The birth rate for married women increased in 2022, up 1% to 84.2 per 1,000 married females ages 15–44 from 83.6 in 2021. The marital birth rate declined 4% over 2005–2010 but rose 6% from 2010 to 2016 before declining 6% through 2020 (12).

The percentage of all births to unmarried women was 39.8% in 2022, down 1% from 2021 (40.0%) (Table 9) (15). The percentage of all births to unmarried women peaked in 2009 at 41.0% (12,15).

The percentage of nonmarital births in 2022 decreased from 2021 for Asian (12.3% in 2022), Black (69.3%), and White (27.1%) women, and was unchanged for American Indian and Alaska Native (68.1%), Native Hawaiian and Other Pacific Islander (53.2%), and Hispanic (53.2%) women. The number of nonmarital births declined by less than 1% from 2021 (1,464,455) to 2022 (1,461,305), a nonsignificant change (15).

Nonmarital birth rates declined from 2021 to 2022 for females in age groups younger than 30, with the rate for teenagers ages 15–19 declining 2% (to 12.7 per 1,000 in 2022). The rate for females ages 15–17 remained at an all-time low (5.6), and the rate for teenagers 18–19 declined 3% to 23.6. Conversely, the nonmarital birth rate for women ages 35–39 increased 2% and reached a historic peak of 38.8; it also increased 2% for women ages 40–44 (11.6). The rate was unchanged for women ages 30–34 (58.6).

Compositional differences by race and Hispanic origin and maternal age among states are major contributing factors to the geographic variation in the percentage of births to unmarried mothers (Table 1–7). In 2022, the percentages of unmarried births ranged from about one in five births in Utah (20.3%) to more than one in two births in Louisiana (54.7%), Mississippi (54.3%), and New Mexico (52.6%).

## Cigarette Smoking Before and During Pregnancy (Tables 13–15)

Of the women who gave birth in 2022, 3.7% reported smoking cigarettes (tobacco only) at any time while pregnant, a 20% decline from 2021 (4.6%) and down 49% from 2016 (7.2%) (Table 15) (13,15). A recent report describes trends in cigarette smoking for 2016 through 2021 (19). Cigarette smoking was most common earlier in pregnancy: 3.6% of women smoked in their first trimester, 3.1% in their second, and 2.9% in their

third. Of the 4.6% of women who reported smoking in the 3 months before becoming pregnant, 22.3% quit smoking before pregnancy.

By race and Hispanic origin, 5.4% of White women reported smoking any time during pregnancy, down 19% from 2021; 3.1% of Black women reported smoking any time during pregnancy, down 18%; and 1.0% of Hispanic women reported smoking during pregnancy, down 17% from 2021. See [Tables 13](#) and [14](#) for 2022 smoking levels among other race and Hispanic-origin groups. Rates of quitting smoking before pregnancy also varied by race and Hispanic origin: 20.6% of White, 22.1% of Black, and 35.9% of Hispanic women who smoked during the 3 months before pregnancy did not smoke while pregnant.

By maternal age, smoking rates during pregnancy were highest among women ages 20–24 (4.4%) and 25–29 (4.0%). Tobacco use during pregnancy was less common (less than 4%) among females younger than age 20 and women age 30 and older ([Table 15](#)).

## Medical and Health Services Utilization and Source of Payment for the Delivery (Tables 13–19)

### Use and timing of prenatal care

Among women who gave birth in 2022, 77.0% began prenatal care in the first trimester of pregnancy, down 2% from 78.3% in 2021 and the lowest percentage since comparable national data became available in 2016 (77.1%). Late (beginning in the third trimester) or no prenatal care increased 8% in 2022 to 6.8%, from 6.3% in 2021 and higher than any year since comparable national data became available ([Table A](#), [Table 16](#)) (15). A recent report describes changes in timing of prenatal care initiation and the number of prenatal care visits from 2019 through 2021 (20).

Prenatal care beginning in the first trimester decreased for the three largest race and Hispanic-origin groups: White (from 83.2% in 2021 to 82.6% in 2022), Hispanic (from 72.5% to 70.5%), and Black (from 69.7% to 67.6%) ([Table 16](#)) (15). Late or no prenatal care increased for White (4.6% to 4.7%), Hispanic (8.4% to 9.1%), and Black (9.1% to 10.0%) women. Timing of prenatal care continued to vary by race and Hispanic

**Table A. Timing of prenatal care initiation: United States, 2016–2022**

Year	First trimester	Late or no care <sup>1</sup>
2022.....	77.0	6.8
2021.....	78.3	6.3
2020.....	77.7	6.2
2019.....	77.6	6.4
2018.....	77.5	6.2
2017.....	77.3	6.3
2016.....	77.1	6.2

<sup>1</sup>Care starting in the third trimester or no care.

SOURCE: National Center for Health Statistics, National Vital Statistics System, natality data file.

origin in 2022. First trimester care ranged from 49.7% for Native Hawaiian and Other Pacific Islander women to 82.6% for White women; late or no prenatal care ranged from 4.5% for Asian women to 22.4% for Native Hawaiian and Other Pacific Islander women ([Table 13](#)).

Initiation of prenatal care in the first trimester was lower in 2022 than in 2021 for women in all age groups, decreasing from 61.6% to 59.1% for females younger than age 20, from 72.3% to 70.6% for ages 20–24, and from 78.6% to 77.1% for ages 25–29. For women in age groups 30 and older, first trimester care decreased from 82.2% to 80.9% for women ages 30–34, from 81.7% to 80.4% for ages 35–39, and from 78.0% to 76.8% for age 40 and older ([Table 16](#)) (15).

### Method of delivery

#### Cesarean delivery

In 2022, the cesarean delivery rate was 32.1%, unchanged from 2021; the rate had increased in 2020 and 2021 after declining in 2018 and 2019 ([Table 17](#)). The cesarean delivery rate peaked in 2009 at 32.9%, after increasing every year since 1996 (20.7%) (12).

The cesarean delivery rate increased less than 1% in 2022 for Hispanic (31.7%, up from 31.6% in 2021) and White (31.1%, up from 31.0%) women and remained unchanged for Black women (36.8%). Black women continued to have the highest cesarean delivery rate in 2022. [Tables 13](#) and [14](#) show cesarean delivery rates for more detailed race and Hispanic-origin groups.

Changes from 2021 to 2022 in cesarean delivery rates varied by maternal age group ([Table 18](#)). Females younger than age 20 and women ages 20–24 were less likely to have a cesarean delivery in 2022 than in 2021 (18.9% from 19.4% for females younger than age 20, and 24.9% from 25.4% for women ages 20–24). For women ages 30–34, the cesarean delivery rate increased less than 1% from 33.8% in 2021 to 33.9% in 2022. Rates for other age groups were essentially unchanged. Cesarean delivery continued to be higher among older women compared with younger mothers; women age 40 and older were more than twice as likely to deliver by cesarean section (47.7%) than females younger than age 20 (18.9%).

**Low-risk cesarean delivery**—The low-risk cesarean delivery rate did not change from 2021 to 2022, remaining at 26.3%. The low-risk cesarean delivery rate is cesarean delivery among nulliparous (first birth), term (37 completed weeks or more based on the obstetric estimate), singleton (one fetus), and cephalic (head-first) births. See [Tables 13](#), [14](#), [17](#), and [18](#) for details by age and race and Hispanic origin of the mother.

**Primary cesarean delivery**—In 2022, the primary cesarean delivery rate, which measures cesarean deliveries among women who have not had a previous cesarean delivery, was 22.5%, up 1% from 22.3% in 2021 ([Tables 17](#) and [18](#)). A recent report describes trends in primary and repeat cesarean delivery through 2021 (21).

**Vaginal birth after previous cesarean delivery**—The rate of vaginal birth after previous cesarean delivery measures vaginal births among women with a previous cesarean delivery. In 2022, 14.6% of women with a previous cesarean delivered vaginally,

up 3% from 14.2% in 2021. The rate has increased every year since 2016, when national data became available (Tables 17 and 18).

## Source of payment for the delivery

The principal sources of payment for the delivery of most births in 2022 continued to be either private insurance or Medicaid; however, the percentage of births covered by private insurance declined from 2021 (from 51.7% to 51.2%), and the percentage of births covered by Medicaid increased (41.0% to 41.3%). The percentage of births in the category self-pay, generally considered to indicate uninsured deliveries, increased from 2021 (3.9% to 4.1%). The remainder of births were covered by other insurance (3.4% of births, unchanged from 2021), which includes Indian Health Service, CHAMPUS or TRICARE, other government (federal, state, or local), or charity (Table 19) (15). A recent report describes source of payment for the delivery by various maternal characteristics for 2021 (22).

By the three largest race and Hispanic-origin groups, the percentage of births covered by private insurance declined for Black (from 30.8% to 30.6%) and Hispanic (32.1% to 31.6%) women from 2021 to 2022 and increased for White women (65.0% to 65.1%) (15). The percentage of births covered by Medicaid did not change from 2021 to 2022 for Black women (64.1% in 2022) but increased for Hispanic women (58.1% to 58.6%) and declined for White women (28.1% to 27.8%). See Tables 13 and 14 for information for additional race and Hispanic-origin groups.

By age of mother, Medicaid as the source of payment increased for women ages 20–39 and was essentially unchanged for those younger than age 20 (from 78.8% to 78.9%) and women ages 40–54 (30.0% to 30.1%) from 2021 to 2022 (15). The largest increase was seen among women ages 30–34, from 29.4% to 30.3%. The percentages of births with Medicaid as the source of payment ranged from 27.4% for women ages 35–39 to 78.9% for those younger than age 20. Private insurance as the source of payment declined from 2021 to 2022 for women ages 20–39 and did not change for females younger than 20 or women ages 40–54. Percentages with private insurance ranged from 14.7% for females younger than 20 to 65.6% for women ages 35–39.

## Infant Health Characteristics (Tables 20–25)

### Period of gestation

The U.S. **preterm birth rate** declined 1% in 2022 to 10.38%. This 2022 decline follows a 4% rise in the rate from 2020 to 2021 (10.49%). The preterm birth rate (percentage of all births delivered at less than 37 completed weeks of gestation) declined steadily from 2007 (10.44%) to 2014 (9.57%) (12), rose 7% through 2019 (10.23%), and declined 1% from 2019 to 2020 (10.09%) (Table 20). (National data based on the obstetric estimate of gestation are available only from 2007 [23]; see Technical Notes.)

Declines from 2021 to 2022 were seen among infants born **early preterm** (less than 34 weeks), down from 2.81% to 2.76%, and **late preterm** (34–36 weeks), from 7.67% to 7.62%. Both early and late preterm rates rose 4% from 2020 to 2021. The late preterm birth rates for 2021 and 2022 are the highest since comparable data have been available (2007) (12,23).

Changes in the distribution of births delivered at **term and later** (37 weeks and higher) were also observed from 2021 to 2022. Following trends generally observed since 2014 (Figure 3) (24), the percentage of infants born early term (37–38 weeks) rose by 2% in 2022, from 28.76% to 29.31%, while full-term births (39–40 weeks) declined by 1% (55.90% to 55.32%). Late-term births (41 weeks) increased (4.61% to 4.73%), as did post-term births (42 weeks and higher) (0.25% to 0.26%). From 2007 to 2014, the early-term birth rate had generally declined, and the full-term rate had increased (12). The percentage of post-term births generally declined from 2007 to 2019 but was unchanged at 0.25% for 2019–2021 (Table 20) (12). Increases in early-term and declines in full- and late-term births were seen for the three largest race and Hispanic-origin groups from 2021 to 2022.

Preterm birth rates declined by 1% for births to Black mothers (from 14.75% to 14.59%) and White mothers (9.50% to 9.44%) and by 2% for Hispanic mothers (10.23% to 10.06%) from 2021 to 2022 (Table 20). For 2022, preterm birth rates for race and Hispanic-origin groups ranged from a high of 14.59% for births to Black mothers to a low of 9.19% among Asian mothers (Table 13). Preterm rates for Hispanic subgroups ranged from 9.44% (Cuban) and 9.47% (Central and South American) to 11.46% (Puerto Rican) (Table 14).

Analyzing births in singleton deliveries separately from all births can also be important because of the shorter average gestations of multiple births and their corresponding potential influence on preterm birth rates (see also “Multiple births” in this report). The 2022 **preterm birth rate for singleton births only** was 8.67%, down 1% from the 2021 level of 8.76% (12). From 2007 to 2014, the singleton preterm rate declined from 8.59% to 7.74%, but it has risen 12% from 2014 to 2022 (see Table B for 2022 data) (12,15).

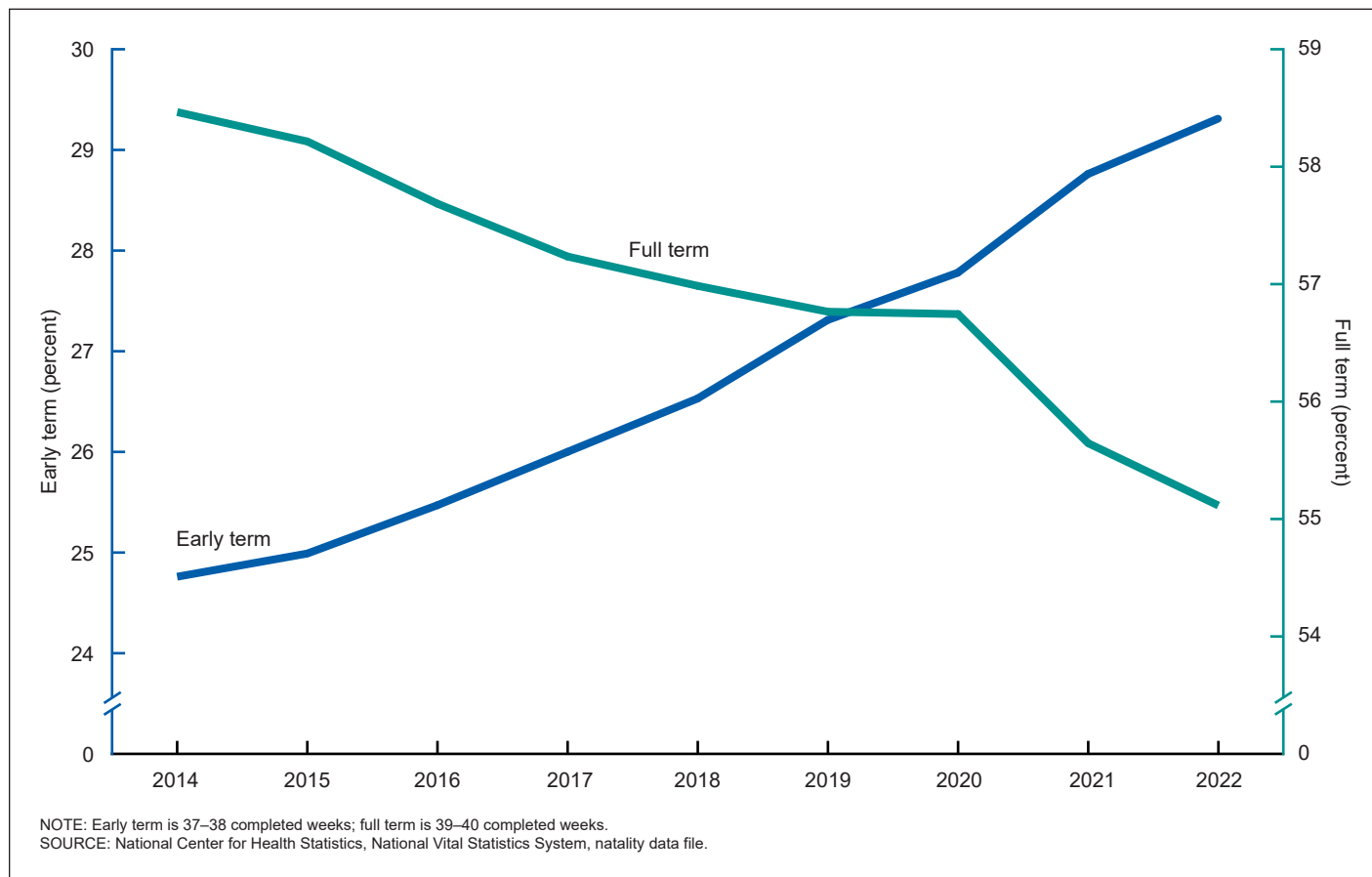
Declines in preterm birth rates were observed in six states from 2021 to 2022 (Florida, Maryland, New York, Oklahoma, South Carolina, and Utah), while the rate increased in two states (Kansas and Ohio); see Table I–19 for 2022 data.

### Birthweight

The percentage of infants born low birthweight (LBW; less than 2,500 grams or 5 pounds, 8 ounces) rose 1% in 2022 to 8.60% from 8.52% in 2021; the rate rose 3% from 2020 to 2021. While fluctuating somewhat over the last 4 decades, the rate has risen more than 20% since the 1980s (Tables 22 and 23, Figure 4) (25).

The **very low birthweight** (less than 1,500 grams) rate declined to 1.36% in 2022 from 1.38% in 2021. The very low birthweight rate is down from the high of 1.49% for 2005–2007 (12). The percentage of **moderately low birthweight** infants (1,500–2,499 grams) increased 1% in 2022 to 7.24% from 7.14% in 2021; moderately low birthweight levels for 2016–2022

**Figure 3. Percentage of early- and full-term births: United States, 2014–2022**



**Table B. Gestational age and birthweight characteristics, by plurality: United States, 2022**

Plurality	Number of births	Early preterm <sup>1</sup>	Preterm <sup>2</sup>	Percent	
				Very low birthweight <sup>3</sup>	Low birthweight <sup>4</sup>
All births	3,667,758	2.76	10.38	1.36	8.60
Singleton	3,550,380	2.16	8.67	1.08	7.01
Twin	114,483	19.64	61.27	9.11	55.82
Triplet	2,774	67.85	98.99	37.10	96.84
Quadruplet	108	83.33	98.15	55.56	98.15
Quintuplet and higher-order multiples	13	76.92	76.92	76.92	76.92

<sup>1</sup>Less than 34 completed weeks of gestation.

<sup>2</sup>Less than 37 completed weeks of gestation.

<sup>3</sup>Less than 1,500 grams (3 lb 4 oz).

<sup>4</sup>Less than 2,500 grams (5 lb 8 oz).

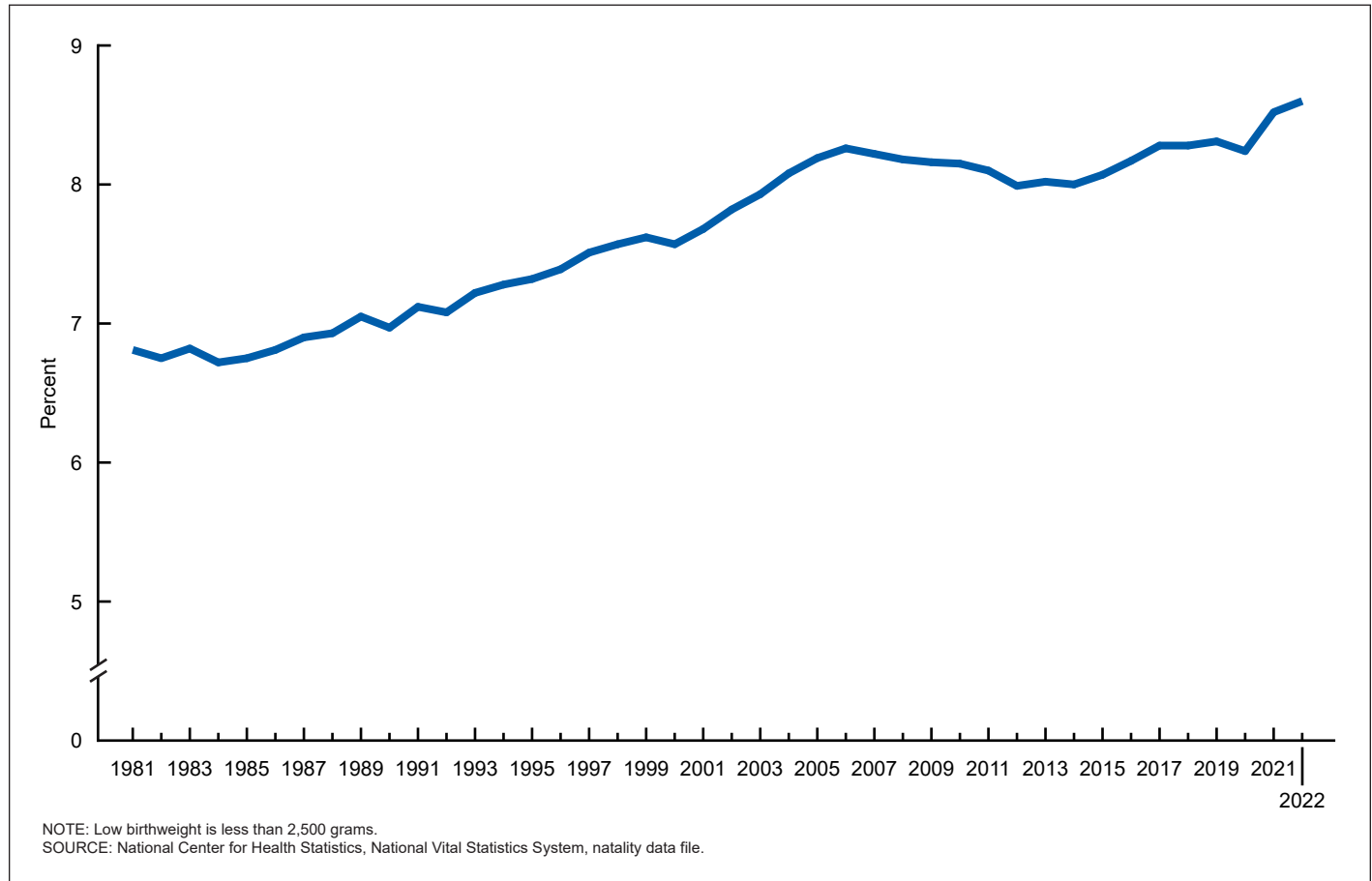
SOURCE: National Center for Health Statistics, National Vital Statistics System, natality data file.

have matched or surpassed the peak reported for 2006 (6.77%) (Table 22) (12).

From 2021 to 2022, the LBW rate rose among births to White women (from 7.03% to 7.12%); increases for Black (14.66% to 14.75%) and Hispanic (7.82% to 7.87%) women were not significant. Since 2016, LBW rates have fluctuated for all groups but have increased a total of 2% for White women (from 6.97%) and 8% for both Black (13.68%) and Hispanic (7.32%) women (Table 22). See Tables 13, 14, I–21, and I–22 for 2022 very low birthweight and LBW rates by state and race and Hispanic origin.

The LBW rate among **singleton births only** increased 1%, from 6.93% in 2021 to 7.01% in 2022 (15); see Table B for 2022 data. Examining births in singleton deliveries separately can be informative because multiple births tend to be born smaller than singleton births, and changes in multiple-birth incidence can influence overall LBW levels.



**Figure 4. Percentage of low birthweight: United States, 1981–2022**

## Multiple births

The 2022 twin birth rate was 31.2 twins per 1,000 births, unchanged from 2021 (Tables 24 and 25). The twinning rate (births in twin deliveries per 1,000 total births) rose 76% from 1980 to 2009 (from 18.9 to 33.2 per 1,000), was generally stable from 2009 to 2012, and then rose for 2013 and 2014 before declining 8% from 2014 to 2020. The rates for 2020 through 2022 are the lowest in 2 decades (12).

The triplet and higher-order multiple birth rate (triplet+) was 78.9 per 100,000 births for 2022, a nonsignificant decline from 2021 (80.0) (Tables 24 and 25). The 2022 rate of triplet+ births is down 59% from the 1998 peak (193.5) (12). The triplet+ birth rate (number of triplets, quadruplets, and quintuplets and other higher-order multiples per 100,000 births) rose more than 400% from 1980 to 1998 (12).

A total of 114,483 infants were born in twin deliveries in 2022 compared with 114,161 twins in 2021 (Table 24). The number of triplet+ infants born in 2022 was 2,895 compared with 2,933 in 2021. The number of triplet+ births is down 62% since the 2003 high when 7,663 triplet+ births were reported (12). The 2022 number included 2,774 triplets, 108 quadruplets, and 13 quintuplet and higher-order multiple births. See Table B for the number of births and percentages of preterm and LBW births by plurality.

Twin birth rates rose from 2021 to 2022 for Black women (40.6 to 41.4) and were essentially unchanged for White (32.5

to 32.6) and Hispanic (24.2 to 24.5) women. Triplet+ birth rates rose for Black women (81.9 to 108.7), declined for White women (93.3 to 84.2), and remained essentially unchanged for Hispanic women (62.5 to 61.3) (Table 24; also see Tables 13 and 14 for 2022 twin and triplet+ rates for additional race and Hispanic-origin groups). For state-specific twin and triplet+ rates, see Table I–23.

## References

1. Hamilton BE, Martin JA, Osterman MJK. Births: Provisional data for 2022. Vital Statistics Rapid Release; no 28. Hyattsville, MD: National Center for Health Statistics. June 2023. DOI: <https://dx.doi.org/10.15620/cdc:127052>.
2. National Center for Health Statistics. Provisional estimates for selected maternal and infant outcomes by month, 2019–2023. Available from: <https://www.cdc.gov/nchs/covid19/technical-notes-outcomes.htm>.
3. Martin JA, Hamilton BE, Osterman MJK. Births in the United States, 2022. NCHS Data Brief, no 477. Hyattsville, MD: National Center for Health Statistics. 2023. DOI: <https://dx.doi.org/10.15620/cdc:131354>.
4. National Center for Health Statistics. Vital statistics online data portal. Birth data files. Available from: [https://www.cdc.gov/nchs/data\\_access/VitalStatsOnline.htm](https://www.cdc.gov/nchs/data_access/VitalStatsOnline.htm).

5. National Center for Health Statistics. Data release policy for vital statistics micro-data files. Available from: [https://www.cdc.gov/nchs/nvss/dvs\\_data\\_release.htm](https://www.cdc.gov/nchs/nvss/dvs_data_release.htm).
6. Centers for Disease Control and Prevention. CDC WONDER. Natality information: Live births. Available from: <https://wonder.cdc.gov/Natality.html>.
7. Martin JA, Wilson EC, Osterman MJK, Saadi EW, Sutton SR, Hamilton BE. Assessing the quality of medical and health data from the 2003 birth certificate revision: Results from two states. *National Vital Statistics Reports*; vol 62 no 2. Hyattsville, MD: National Center for Health Statistics. 2013.
8. Gregory ECW, Martin JA, Argov EL, Osterman MJK. Assessing the quality of medical and health data from the 2003 birth certificate revision: Results from New York City. *National Vital Statistics Reports*; vol 68 no 8. Hyattsville, MD: National Center for Health Statistics. 2019.
9. National Center for Health Statistics. User guide to the 2022 natality public use file. Available from: [https://ftp.cdc.gov/pub/Health\\_Statistics/NCHS/Dataset\\_Documentation/DVS/natality/UserGuide2022.pdf](https://ftp.cdc.gov/pub/Health_Statistics/NCHS/Dataset_Documentation/DVS/natality/UserGuide2022.pdf).
10. National Center for Health Statistics. 2003 revisions of the U.S. Standard Certificates of Live Birth, Death, and Fetal Death. Available from: [https://www.cdc.gov/nchs/nvss/vital\\_certificate\\_revisions.htm](https://www.cdc.gov/nchs/nvss/vital_certificate_revisions.htm).
11. Office of Management and Budget. Revisions to the standards for the classification of federal data on race and ethnicity. *Fed Regist* 62(210):58782–90. 1997.
12. Martin JA, Hamilton BE, Osterman MJK, Driscoll AK, Mathews TJ. Births: Final data for 2015. *National Vital Statistics Reports*; vol 66 no 1. Hyattsville, MD: National Center for Health Statistics. 2017. Available from: [https://www.cdc.gov/nchs/data/nvsr/nvsr66/nvsr66\\_01.pdf](https://www.cdc.gov/nchs/data/nvsr/nvsr66/nvsr66_01.pdf).
13. Martin JA, Hamilton BE, Osterman MJK, Driscoll AK, Drake P. Births: Final data for 2016. *National Vital Statistics Reports*; vol 67 no 1. Hyattsville, MD: National Center for Health Statistics. 2018. Available from: [https://www.cdc.gov/nchs/data/nvsr/nvsr67/nvsr67\\_01.pdf](https://www.cdc.gov/nchs/data/nvsr/nvsr67/nvsr67_01.pdf).
14. Osterman MJK, Hamilton BE, Martin JA, Driscoll AK, Valenzuela CP. Births: Final data for 2020. *National Vital Statistics Reports*; vol 70 no 17. Hyattsville, MD: National Center for Health Statistics. 2022.
15. Osterman MJK, Hamilton BE, Martin JA, Driscoll AK, Valenzuela CP. Births: Final data for 2021. *National Vital Statistics Reports*; vol 72 no 1. Hyattsville, MD: National Center for Health Statistics. 2023. DOI: <https://dx.doi.org/10.15620/cdc:122047>.
16. National Center for Health Statistics. Vital statistics of the United States, 2003, Volume I, Natality. Available from: [https://www.cdc.gov/nchs/products/vsus/vsus\\_1980\\_2003.htm](https://www.cdc.gov/nchs/products/vsus/vsus_1980_2003.htm).
17. Ventura SJ, Hamilton BE, Mathews TJ. National and state patterns of teen births in the United States, 1940–2013. *National Vital Statistics Reports*; vol 63 no 4. Hyattsville, MD: National Center for Health Statistics. 2014. Available from: [https://www.cdc.gov/nchs/data/nvsr/nvsr63/nvsr63\\_04.pdf](https://www.cdc.gov/nchs/data/nvsr/nvsr63/nvsr63_04.pdf).
18. Hamilton BE, Rossen LM, Branum AM. Teen birth rates for urban and rural areas in the United States, 2007–2015. *NCHS Data Brief*, no 264. Hyattsville, MD: National Center for Health Statistics. 2016. Available from: <https://www.cdc.gov/nchs/data/databriefs/db264.pdf>.
19. Martin JA, Osterman MJK, Driscoll AK. Declines in cigarette smoking during pregnancy in the United States, 2016–2021. *NCHS Data Brief*, no 458. Hyattsville, MD: National Center for Health Statistics. 2023.
20. Martin JA, Osterman MJK. Changes in prenatal care utilization: United States, 2019–2021. *National Vital Statistics Reports*; vol 72 no 4. Hyattsville, MD: National Center for Health Statistics. 2023.
21. Osterman MJK. Changes in primary and repeat cesarean delivery: United States, 2016–2021. *Vital Statistics Rapid Release*; no 21. Hyattsville, MD: National Center for Health Statistics. July 2022.
22. Valenzuela CP, Osterman MJK. Characteristics of mothers by source of payment for the delivery: United States, 2021. *NCHS Data Brief*, no 468. Hyattsville, MD: National Center for Health Statistics. 2023.
23. Martin JA, Osterman MJK, Kirmeyer SE, Gregory ECW. Measuring gestational age in vital statistics data: Transitioning to the obstetric estimate. *National Vital Statistics Reports*; vol 64 no 5. Hyattsville, MD: National Center for Health Statistics. 2015.
24. Martin JA, Osterman MJK. Shifts in the distribution of births by gestational age: United States, 2014–2022. *National Vital Statistics Reports*; vol 73 no 1. Hyattsville, MD: National Center for Health Statistics. 2024.
25. Martin JA, Hamilton BE, Osterman MJK, Curtin SC, Mathews TJ. Births: Final data for 2013. *National Vital Statistics Reports*; vol 64 no 1. Hyattsville, MD: National Center for Health Statistics. 2015.
26. National Center for Health Statistics. Report of the Panel to Evaluate the U.S. Standard Certificates. 2000.
27. Ramirez RR, Ennis SR. Item nonresponse, allocation, and data editing of the question on Hispanic origin in the American Community Survey (ACS): 2000 to 2007. U.S. Census Bureau. Working Paper no 86. 2010.
28. U.S. Census Bureau. Vintage 2022 release notes. Available from: <https://www2.census.gov/programs-surveys/popest/technical-documentation/methodology/2020-2022/2022-est-relnotes.pdf>.
29. U.S. Census Bureau. Methodology for the United States population estimates: Vintage 2022. Nation, states, counties, and Puerto Rico—April 1, 2020 to July 1, 2022. Available from: <https://www2.census.gov/programs-surveys/popest/technical-documentation/methodology/2020-2022/methods-statement-v2022.pdf>.
30. U.S. Census Bureau. 2022 population estimates. Annual state resident population estimates for 6 race groups (5 race alone groups and two or more races) by age, sex, and Hispanic origin: April 1, 2020 to July 1, 2022 (SC-EST2022-ALLDATA6). 2023. Available from: <https://www2.census.gov/programs-surveys/popest/datasets/2020-2022/state/asrh/sc-est2022-alldata6.csv>.

31. U.S. Census Bureau. International data base (IDB). Population by single years of age and sex, 2022. 2023. Available from: <a href="https://www.census.gov/data-tools/demo/idb/#/dashboard?COUNTRY_YEAR=2022&amp;COUNTRY_YR_ANIM=2022">https://www.census.gov/data-tools/demo/idb/#/dashboard?COUNTRY_YEAR=2022&amp;COUNTRY_YR_ANIM=2022</a> .	7. Births, by Hispanic origin of mother: United States, each state and territory, 2022. . . . .	25
32. U.S. Census Bureau. 2022 population estimates. Annual estimates of the resident population by single year of age and sex for Puerto Rico Commonwealth: April 1, 2020 to July 1, 2022 (PRCEST2022-SYASEX). 2023. Available from: <a href="https://www2.census.gov/programs-surveys/popest/tables/2020-2022/puerto-rico/asrh/prc-est2022-syasex.xlsx">https://www2.census.gov/programs-surveys/popest/tables/2020-2022/puerto-rico/asrh/prc-est2022-syasex.xlsx</a> .	8. Birth rates, by age of mother: United States, each state and territory, 2022 . . . . .	27
33. U.S. Census Bureau. Microdata access. 2021 CPS annual social and economic (March) supplement. 2022. Available from: <a href="https://data.census.gov/mdat/#/">https://data.census.gov/mdat/#/</a> .	9. Births to unmarried women, by age and race and Hispanic origin of mother: United States, 2022 . . . . .	29
34. U.S. Census Bureau. Microdata access. 2022 CPS annual social and economic (March) supplement. 2023. Available from: <a href="https://data.census.gov/mdat/#/">https://data.census.gov/mdat/#/</a> .	10. Birth rates for unmarried women: United States, 2010–2022, and by age and race and Hispanic origin of mother: United States, 2016–2022 . . . . .	30
35. Ventura SJ, Bachrach CA. Nonmarital childbearing in the United States, 1940–99. National Vital Statistics Reports; vol 48 no 16. Hyattsville, MD: National Center for Health Statistics. 2000.	11. Selected demographic characteristics of births, by race and Hispanic origin of mother: United States, 2022 . . . . .	31
36. U.S. Census Bureau. American Community Survey (ACS), 2022 1-year estimates (st31002_2022_010_flags), by sex, age, nativity, and Hispanic origin. Population estimates for 2022 based on unpublished tabulations. 2024. [Forthcoming].	12. Selected demographic characteristics of births, by Hispanic origin of mother: United States, 2022 . . . . .	32
37. Parker JD, Talih M, Malec DJ, Beresovsky V, Carroll M, Gonzalez Jr JF, et al. National Center for Health Statistics data presentation standards for proportions. National Center for Health Statistics. Vital Health Stat 2(175). 2017. Available from: <a href="https://www.cdc.gov/nchs/data/series/sr_02/sr02_175.pdf">https://www.cdc.gov/nchs/data/series/sr_02/sr02_175.pdf</a> .	13. Selected medical and health characteristics of births, by race and Hispanic origin of mother: United States, 2022. . . . .	33
38. National Center for Health Statistics. User guide to the 2010 natality public use file. Available from: <a href="https://ftp.cdc.gov/pub/Health_Statistics/NCHS/Dataset_Documentation/DVS/natality/UserGuide2010.pdf">https://ftp.cdc.gov/pub/Health_Statistics/NCHS/Dataset_Documentation/DVS/natality/UserGuide2010.pdf</a> .	14. Selected medical and health characteristics of births, by Hispanic origin of mother: United States, 2022 . . . . .	34
39. National Center for Health Statistics. Guide to completing the facility worksheets for the certificate of live birth and report of fetal death (2003 revision). 2022 update. Available from: <a href="https://www.cdc.gov/nchs/data/dvs/GuidetoCompleteFacilityWks.pdf">https://www.cdc.gov/nchs/data/dvs/GuidetoCompleteFacilityWks.pdf</a> .	15. Mothers who smoked for the 3 months before pregnancy and anytime during pregnancy, and those who quit before and during pregnancy, by age and race and Hispanic origin of mother: United States, 2022 . . . . .	35
	16. Trimester prenatal care began, by age and race and Hispanic origin of mother: United States, 2022 . . . . .	37
	17. Births, by method of delivery: United States, 2010–2022, and by race and Hispanic origin of mother: United States, 2016–2022. . . . .	38
	18. Births, by method of delivery and by age and race and Hispanic origin of mother: United States, 2022 . . . . .	40
	19. Principal source of payment for the delivery, by age and race and Hispanic origin of mother: United States, 2022. . . . .	41
	20. Births, by gestational age in weeks: United States, and 2010–2022, by race and Hispanic origin of mother: United States, 2016–2022. . . . .	42
	21. Births, by gestational age in weeks, and age and race and Hispanic origin of mother: United States, 2022 . . . . .	44
	22. Births, by birthweight: United States, 2010–2022, and by race and Hispanic origin of mother: United States, 2016–2022. . . . .	46
	23. Births, by birthweight and age and race and Hispanic origin of mother: United States, 2022 . . . . .	49
	24. Twin, triplet, and higher-order multiple births: United States, 2010–2022, and by race and Hispanic origin of mother: United States, 2016–2022 . . . . .	51
	25. Births, by plurality and age and race and Hispanic origin of mother: United States, 2022 . . . . .	52

## List of Detailed Tables

1. Births and birth rates: United States, 2010–2022, and by race and Hispanic origin of mother: United States, 2016–2022. . . . .	13
2. Birth rates, by age of mother: United States, 2010–2022, and by age and race and Hispanic origin of mother: United States, 2016–2022 . . . . .	15
3. Births, by age of mother, live-birth order, and race and Hispanic origin of mother: United States, 2022 . . . . .	17
4. Births, by age of mother, live-birth order, and Hispanic origin of mother: United States, 2022 . . . . .	19
5. Birth rates, by age of mother, live-birth order, and race and Hispanic origin of mother: United States, 2022 . . . . .	21
6. Births, by race and Hispanic origin of mother: United States, each state and territory, 2022 . . . . .	23

## List of Internet Tables

(Available from: <https://www.cdc.gov/nchs/data/nvsr/nvsr73/nvsr73-02-tables.pdf>)

I–1. Time of birth, by day of week of birth and race and Hispanic origin of mother: United States, 2022	
I–2. Births and seasonally adjusted birth rates, by month: United States, 2022	
I–3. Births, by day of week and method of delivery: United States, 2022	
I–4. Births, by attendant, place of delivery, and race and Hispanic origin of mother: United States, 2022	
I–5. Births occurring at home, by state: United States and each state, 2022	

- I-6. Mean age of mother, by live-birth order: United States, 2010–2022, and by race and Hispanic origin of mother: United States, 2016–2022
- I-7. Births to unmarried women, by race and Hispanic origin of mother: United States, each state and territory, 2022
- I-8. Educational attainment of mother, by age and race and Hispanic origin of mother: United States, 2022
- I-9. Maternal prepregnancy body mass index, by age and race and Hispanic origin of mother: United States, 2022
- I-10. Live births by interval since last live birth, by age and race and Hispanic origin of mother: United States, 2022
- I-11. Mother received WIC food for herself during this pregnancy and infant was being breastfed at discharge, by age and race and Hispanic origin of mother: United States, 2022
- I-12. Pregnancy risk factors, by age and race and Hispanic origin of mother: United States, 2022
- I-13. Infections present or treated during this pregnancy, by age and race and Hispanic origin of mother: United States, 2022
- I-14. External cephalic version, by age and race and Hispanic origin of mother: United States, 2022
- I-15. Characteristics of labor and delivery, by age and race and Hispanic origin of mother: United States, 2022
- I-16. Total cesarean delivery and low-risk cesarean delivery, by race and Hispanic origin of mother: United States, each state and territory, 2022
- I-17. Method of delivery, by age and race and Hispanic origin of mother: United States, 2022
- I-18. Maternal morbidity, by age and race and Hispanic origin of mother: United States, 2022
- I-19. Preterm births, by race and Hispanic origin of mother: United States, each state and territory, 2022
- I-20. Late preterm births, by race and Hispanic origin of mother: United States, each state and territory, 2022
- I-21. Low birthweight births, by race and Hispanic origin of mother: United States, each state and territory, 2022
- I-22. Very low birthweight births, by race and Hispanic origin of mother: United States, each state and territory, 2022
- I-23. Twin and triplet or higher-order multiple births: United States and each state, 2020–2022
- I-24. Abnormal conditions of the newborn, by age and race and Hispanic origin of mother: United States, 2022
- I-25. Congenital anomalies of the newborn, by age of mother: United States, 2022

**Table 1. Births and birth rates: United States, 2010–2022, and by race and Hispanic origin of mother: United States, 2016–2022**

[Birth rates are births per 1,000 population in specified group. Fertility rates are births per 1,000 females ages 15–44 in specified group. Populations based on counts enumerated as of April 1 for census year and estimated as of July 1 for all other years]

Race and Hispanic origin and year	Number of births	Birth rate	Fertility rate
All races and origins <sup>1</sup>			
2022.....	3,667,758	11.0	56.0
2021.....	3,664,292	11.0	56.3
2020.....	3,613,647	10.9	55.7
2019.....	3,747,540	11.4	58.3
2018.....	3,791,712	11.6	59.1
2017.....	3,855,500	11.8	60.3
2016.....	3,945,875	12.2	62.0
2015.....	3,978,497	12.4	62.5
2014.....	3,988,076	12.5	62.9
2013.....	3,932,181	12.4	62.5
2012.....	3,952,841	12.6	63.0
2011.....	3,953,590	12.7	63.2
2010.....	3,999,386	13.0	64.1
Non-Hispanic, single race <sup>2</sup>			
American Indian and Alaska Native:			
2022.....	25,721	10.8	50.6
2021.....	26,124	10.8	50.8
2020.....	26,813	11.1	52.6
2019.....	28,450	11.9	56.2
2018.....	29,092	12.2	57.7
2017.....	29,957	12.6	59.5
2016.....	31,452	13.3	62.7
Asian:			
2022.....	218,994	11.1	49.4
2021.....	213,813	11.2	49.6
2020.....	219,068	11.6	50.4
2019.....	238,769	13.0	55.3
2018.....	240,798	13.2	55.6
2017.....	249,250	13.8	58.0
2016.....	254,471	14.6	61.1
Black:			
2022.....	511,439	12.3	56.1
2021.....	517,889	12.5	57.4
2020.....	529,811	12.8	58.9
2019.....	548,075	13.4	61.4
2018.....	552,029	13.6	62.0
2017.....	560,715	13.9	63.1
2016.....	558,622	14.0	63.3
Native Hawaiian and Pacific Islander:			
2022.....	10,122	16.5	74.8
2021.....	9,531	15.8	71.5
2020.....	9,626	16.1	72.5
2019.....	9,770	17.0	74.9
2018.....	9,476	16.6	73.0
2017.....	9,426	16.7	72.8
2016.....	9,342	16.8	72.9
White:			
2022.....	1,840,739	9.5	53.1
2021.....	1,887,656	9.7	54.4
2020.....	1,843,432	9.4	53.0
2019.....	1,915,912	9.8	55.3
2018.....	1,956,413	10.0	56.3
2017.....	1,992,461	10.2	57.2
2016.....	2,056,332	10.5	58.8

**Table 1. Births and birth rates: United States, 2010–2022, and by race and Hispanic origin of mother: United States, 2016–2022—Con.**

[Birth rates are births per 1,000 population in specified group. Fertility rates are births per 1,000 females ages 15–44 in specified group. Populations based on counts enumerated as of April 1 for census year and estimated as of July 1 for all other years]

Race and Hispanic origin and year	Number of births	Birth rate	Fertility rate
Hispanic <sup>3</sup>			
2022.....	937,421	14.7	65.7
2021.....	885,916	14.1	63.4
2020.....	866,713	14.0	62.9
2019.....	886,467	14.6	65.3
2018.....	886,210	14.8	65.9
2017.....	898,764	15.2	67.6
2016.....	918,447	16.0	70.6

<sup>1</sup>Includes births to race and origin groups not shown separately, such as Hispanic single-race Black, Hispanic single-race White, and non-Hispanic multiple-race women, as well as births with origin not stated.

<sup>2</sup>Race groups are single race. Race and Hispanic origin are reported separately on birth certificates. In this table, non-Hispanic women are classified by race. Race categories are consistent with 1997 Office of Management and Budget standards; see Technical Notes in this report. Single race is defined as only one race reported on the birth certificate.

<sup>3</sup>Includes all people of Hispanic origin of any race; see Technical Notes.

NOTE: Rates for 2020 have been revised and may differ from those published in "Births: Final Data for 2020"; see Technical Notes.

SOURCE: National Center for Health Statistics, National Vital Statistics System, natality data file.

**Table 2. Birth rates, by age of mother: United States, 2010–2022, and by age and race and Hispanic origin of mother: United States, 2016–2022**

[Total fertility rates are sums of birth rates for 5-year age groups multiplied by 5. Birth rates are births per 1,000 women in specified group. Populations based on counts enumerated as of April 1 for census years and estimated as of July 1 for all other years]

Race and Hispanic origin of mother and year	Total fertility rate	Age of mother									
		10–14	15–19			20–24	25–29	30–34	35–39	40–44	45–49 <sup>1</sup>
			Total	15–17	18–19						
<b>All races and origins<sup>2</sup></b>											
2022.....	1,656.5	0.2	13.6	5.6	25.8	57.5	93.5	97.5	55.3	12.6	1.1
2021.....	1,664.0	0.2	13.9	5.6	26.6	61.5	93.0	97.6	53.7	12.0	0.9
2020.....	1,641.5	0.2	15.0	6.1	28.2	63.3	90.9	94.9	51.3	11.8	0.9
2019.....	1,706.0	0.2	16.7	6.7	31.1	66.6	93.7	98.3	52.8	12.0	0.9
2018.....	1,729.5	0.2	17.4	7.2	32.3	68.0	95.3	99.7	52.6	11.8	0.9
2017.....	1,765.5	0.2	18.8	7.9	35.1	71.0	98.0	100.3	52.3	11.6	0.9
2016.....	1,820.5	0.2	20.3	8.8	37.5	73.8	102.1	102.7	52.7	11.4	0.9
2015.....	1,843.5	0.2	22.3	9.9	40.7	76.8	104.3	101.5	51.8	11.0	0.8
2014.....	1,862.5	0.3	24.2	10.9	43.8	79.0	105.8	100.8	51.0	10.6	0.8
2013.....	1,857.5	0.3	26.5	12.3	47.1	80.7	105.5	98.0	49.3	10.4	0.8
2012.....	1,880.5	0.4	29.4	14.1	51.4	83.1	106.5	97.3	48.3	10.4	0.7
2011.....	1,894.5	0.4	31.3	15.4	54.1	85.3	107.2	96.5	47.2	10.3	0.7
2010.....	1,931.0	0.4	34.2	17.3	58.2	90.0	108.3	96.5	45.9	10.2	0.7
<b>Non-Hispanic, single race<sup>3</sup></b>											
<b>American Indian and Alaska Native:</b>											
2022.....	1,470.0	0.4	22.5	9.5	42.5	74.3	82.8	68.1	36.3	9.1	0.5
2021.....	1,477.0	0.3	24.2	11.3	44.1	78.7	81.9	66.1	36.2	7.5	0.5
2020.....	1,520.5	0.4	25.2	11.0	46.3	82.2	83.2	68.8	35.9	8.1	0.3
2019.....	1,611.5	0.3	29.2	13.5	51.8	86.7	89.1	72.0	36.6	8.0	0.4
2018.....	1,650.5	0.2	29.7	13.5	52.9	87.7	94.4	73.2	36.1	8.3	0.5
2017.....	1,702.0	0.5	32.9	15.7	58.1	93.6	96.4	72.1	36.3	8.2	0.4
2016.....	1,794.5	0.5	35.1	16.8	62.6	97.2	103.4	77.1	37.1	8.2	0.3
<b>Asian:</b>											
2022.....	1,353.0	*	1.9	0.7	3.7	16.4	58.6	104.0	70.9	17.0	1.8
2021.....	1,351.5	*	2.0	0.7	3.8	17.7	60.4	105.0	67.9	15.8	1.5
2020.....	1,379.0	*	2.2	0.8	4.3	20.4	63.9	105.5	66.6	15.5	1.7
2019.....	1,511.0	*	2.7	0.9	5.2	23.1	71.4	115.6	71.0	16.5	1.9
2018.....	1,525.0	*	2.8	1.0	5.4	24.1	73.0	116.5	70.7	16.1	1.8
2017.....	1,597.0	*	3.3	1.1	6.5	26.6	79.6	120.1	71.5	16.5	1.8
2016.....	1,690.5	*	3.9	1.4	7.5	28.9	87.0	127.4	72.8	16.4	1.7
<b>Black:</b>											
2022.....	1,639.0	0.3	20.3	9.0	37.7	71.1	90.7	79.8	50.4	13.8	1.4
2021.....	1,675.0	0.3	21.8	9.3	40.6	79.1	91.9	79.7	48.2	12.8	1.2
2020.....	1,713.5	0.3	23.7	10.5	42.7	84.0	93.4	80.4	47.1	12.7	1.1
2019.....	1,775.5	0.4	25.8	11.1	46.4	88.3	96.4	82.9	47.6	12.6	1.1
2018.....	1,792.0	0.4	26.3	11.9	46.9	90.0	97.1	84.1	47.1	12.3	1.1
2017.....	1,824.5	0.4	27.5	12.5	49.8	94.2	99.5	84.5	46.1	11.7	1.0
2016.....	1,832.5	0.5	29.3	13.7	52.5	95.8	100.8	83.0	45.0	11.1	1.0
<b>Native Hawaiian and Pacific Islander:</b>											
2022.....	2,237.5	*	20.5	7.3	40.7	123.0	132.4	98.0	56.6	15.5	1.3
2021.....	2,131.0	*	21.9	7.3	44.6	116.1	124.7	95.8	51.2	15.0	1.3
2020.....	2,134.5	*	22.2	7.7	44.5	120.5	125.3	91.6	51.5	14.6	*
2019.....	2,178.0	*	26.2	7.7	53.8	121.4	123.5	95.3	54.1	14.2	*
2018.....	2,106.5	*	26.5	8.2	53.7	118.5	118.9	91.9	49.2	15.4	*
2017.....	2,085.5	*	25.5	8.7	50.6	113.3	115.7	94.0	54.6	13.1	*
2016.....	2,076.5	*	28.6	11.0	55.3	109.5	115.5	96.0	49.9	14.7	*
<b>White:</b>											
2022.....	1,568.0	0.1	9.1	3.1	17.9	48.3	91.1	100.4	53.0	10.7	0.9
2021.....	1,598.5	0.1	9.4	3.2	18.7	52.0	91.8	102.3	52.8	10.5	0.8
2020.....	1,551.0	0.1	10.1	3.4	19.9	53.1	88.2	98.2	49.7	10.1	0.7
2019.....	1,610.5	0.1	11.4	3.8	22.3	56.1	90.8	101.5	51.1	10.3	0.8
2018.....	1,640.0	0.1	12.1	4.1	23.6	57.8	92.9	103.1	51.1	10.2	0.7
2017.....	1,666.5	0.1	13.2	4.6	26.0	59.8	95.3	103.7	50.6	9.9	0.7
2016.....	1,719.0	0.1	14.3	5.2	27.7	62.4	99.3	106.2	51.1	9.7	0.7

See footnotes at end of table.

**Table 2. Birth rates, by age of mother: United States, 2010–2022, and by age and race and Hispanic origin of mother: United States, 2016–2022—Con.**

[Total fertility rates are sums of birth rates for 5-year age groups multiplied by 5. Birth rates are births per 1,000 women in specified group. Populations based on counts enumerated as of April 1 for census years and estimated as of July 1 for all other years]

Race and Hispanic origin of mother and year	Total fertility rate	Age of mother									
		10–14	15–19			20–24	25–29	30–34	35–39	40–44	45–49 <sup>1</sup>
			Total	15–17	18–19						
Hispanic <sup>4</sup>											
2022.....	1,969.5	0.3	21.3	9.3	40.1	79.2	113.8	103.1	59.5	15.5	1.2
2021.....	1,899.0	0.3	21.1	9.3	39.8	82.3	108.3	97.5	54.9	14.4	1.0
2020.....	1,879.5	0.3	23.0	10.3	42.5	83.8	105.8	94.4	53.4	14.2	1.0
2019.....	1,940.0	0.3	25.3	11.5	46.2	88.0	108.0	96.3	54.6	14.5	1.0
2018.....	1,959.0	0.3	26.7	12.4	48.5	89.3	108.9	96.6	54.5	14.5	1.0
2017.....	2,006.5	0.3	28.9	13.6	52.7	93.8	111.8	96.4	54.6	14.5	1.0
2016.....	2,092.5	0.4	31.9	15.6	57.3	98.4	117.4	99.2	55.8	14.5	0.9

\* Estimate does not meet National Center for Health Statistics standards of reliability.

<sup>1</sup>Birth rates computed by relating births to women ages 45 and older to women ages 45–49; see Technical Notes in this report.

<sup>2</sup>Includes births to race and origin groups not shown separately, such as Hispanic single-race Black, Hispanic single-race White, and non-Hispanic multiple-race women, as well as births with origin not stated.

<sup>3</sup>Race groups are single race. Race and Hispanic origin are reported separately on birth certificates. In this table, non-Hispanic women are classified by race. Race categories are consistent with 1997 Office of Management and Budget standards; see Technical Notes. Single race is defined as only one race reported on the birth certificate.

<sup>4</sup>Includes all people of Hispanic origin of any race; see Technical Notes.

NOTE: Rates for 2020 have been revised and may differ from those published in "Births: Final Data for 2020"; see Technical Notes.

SOURCE: National Center for Health Statistics, National Vital Statistics System, natality data file.



**Table 3. Births, by age of mother, live-birth order, and race and Hispanic origin of mother: United States, 2022**

[Live-birth order is number of children born alive to mother]

Race and Hispanic origin of mother and live-birth order	All ages	Younger than 15	15–19						20–24	25–29	30–34	35–39	40–44	45–49	50–54
			Total	15	16	17	18	19							
<b>All races and origins<sup>1</sup></b>															
Total	3,667,758	1,825	143,789	4,510	10,213	20,699	39,325	69,042	638,685	1,013,417	1,118,787	606,598	134,115	9,312	1,230
1st child	1,407,964	1,764	122,822	4,364	9,704	18,855	33,897	56,002	358,196	400,002	351,849	142,004	28,378	2,583	366
2nd child	1,162,319	51	18,463	135	467	1,705	4,893	11,263	195,904	331,000	376,462	200,329	37,257	2,492	361
3rd child	611,893	2	1,980	2	18	98	414	1,448	62,414	174,443	214,411	129,928	27,083	1,454	178
4th child	271,598	–	191	1	4	3	35	148	15,723	69,500	100,285	67,530	17,250	996	123
5th child	109,794	–	30	–	2	–	5	23	3,506	23,620	40,962	31,244	9,736	611	85
6th child	46,936	–	3	–	–	1	–	2	704	7,833	17,501	15,204	5,271	375	45
7th child	21,715	–	1	–	–	–	–	1	171	2,534	7,679	8,100	2,999	214	17
8th child and over	23,714	–	6	–	–	–	2	4	185	1,486	6,022	9,911	5,531	537	36
Not stated	11,825	8	293	8	18	37	79	151	1,882	2,999	3,616	2,348	610	50	19
<b>Non-Hispanic, single race<sup>2</sup></b>															
<b>American Indian and Alaska Native</b>															
Alaska Native	25,721	32	1,924	69	133	292	519	911	6,736	7,275	6,202	2,873	649	27	3
1st child	8,045	27	1,590	63	128	263	430	706	3,174	1,907	934	342	64	7	–
2nd child	6,895	4	291	6	5	24	76	180	2,324	2,112	1,473	560	122	9	–
3rd child	4,635	–	30	–	–	3	7	20	880	1,695	1,392	541	95	1	1
4th child	2,843	–	4	–	–	–	1	3	263	911	1,028	534	97	6	–
5th child	1,551	–	–	–	–	–	–	–	58	385	666	340	101	1	–
6th child	812	–	–	–	–	–	–	–	9	162	367	216	55	2	1
7th child	406	–	–	–	–	–	–	–	1	49	165	151	38	1	1
8th child and over	419	–	–	–	–	–	–	–	2	16	155	172	74	–	–
Not stated	115	1	9	–	–	2	5	2	25	38	22	17	3	–	–
<b>Asian</b>															
Asian	218,994	4	982	26	62	122	264	508	10,016	42,087	89,679	61,259	13,702	1,100	165
1st child	97,801	3	858	26	61	111	239	421	6,600	24,527	42,411	19,147	3,807	383	65
2nd child	80,765	–	106	–	1	11	21	73	2,494	12,042	33,504	26,975	5,228	373	43
3rd child	26,478	1	12	–	–	–	3	9	694	3,672	9,186	10,015	2,715	159	24
4th child	8,389	–	2	–	–	–	–	2	158	1,181	2,730	3,113	1,099	90	16
5th child	2,902	–	–	–	–	–	–	–	25	366	946	1,068	444	48	5
6th child	1,041	–	–	–	–	–	–	–	11	103	354	372	179	14	8
7th child	442	–	–	–	–	–	–	–	–	38	137	167	87	13	–
8th child and over	396	–	–	–	–	–	–	–	–	20	114	164	87	11	–
Not stated	780	–	4	–	–	–	1	3	34	138	297	238	56	9	4
<b>Black</b>															
Black	511,439	482	29,194	1,079	2,266	4,473	7,913	13,463	110,822	142,234	133,896	73,610	19,456	1,492	253
1st child	177,958	466	24,552	1,040	2,127	4,003	6,737	10,645	60,836	45,351	29,471	13,342	3,460	391	89
2nd child	145,524	13	4,032	38	134	438	1,057	2,365	32,812	44,835	39,273	19,517	4,613	345	84
3rd child	92,748	–	498	–	3	26	94	375	11,911	27,923	30,322	17,596	4,221	253	24
4th child	49,238	–	60	–	–	1	9	50	3,696	13,952	17,638	10,696	2,995	178	23
5th child	23,120	–	8	–	–	–	2	6	998	6,015	8,754	5,553	1,667	112	13
6th child	10,735	–	–	–	–	–	–	–	225	2,354	4,217	2,924	943	67	5
7th child	5,201	–	–	–	–	–	–	–	62	898	2,014	1,628	556	39	4
8th child and over	5,353	–	3	–	–	–	1	2	42	495	1,741	2,046	916	100	10
Not stated	1,562	3	41	1	2	5	13	20	240	411	466	308	85	7	1

See footnotes at end of table.

**Table 3. Births, by age of mother, live-birth order, and race and Hispanic origin of mother: United States, 2022—Con.**

[Live-birth order refers to number of children born alive to mother]

Race and Hispanic origin of mother and live-birth order	All ages	Younger than 15	15–19						20–24	25–29	30–34	35–39	40–44	45–49	50–54
			Total	15	16	17	18	19							
Non-Hispanic, single race <sup>2</sup> —Con.															
Native Hawaiian and															
Pacific Islander . . . . .	10,122	4	431	8	27	58	106	232	2,609	2,915	2,435	1,375	333	19	1
1st child . . . . .	2,954	4	356	7	27	56	90	176	1,226	746	401	183	35	3	—
2nd child . . . . .	2,490	—	59	1	—	2	14	42	844	807	472	242	62	3	1
3rd child . . . . .	1,820	—	7	—	—	—	1	6	349	631	522	265	44	2	—
4th child . . . . .	1,174	—	2	—	—	—	—	2	117	375	416	214	50	—	—
5th child . . . . .	751	—	—	—	—	—	—	—	26	211	291	178	42	3	—
6th child . . . . .	391	—	—	—	—	—	—	—	7	72	160	118	31	3	—
7th child . . . . .	231	—	—	—	—	—	—	—	1	33	94	79	21	3	—
8th child and over . . . . .	207	—	—	—	—	—	—	—	—	14	62	86	43	2	—
Not stated . . . . .	104	—	7	—	—	—	1	6	39	26	17	10	5	—	—
White . . . . .	1,840,739	407	48,060	1,171	2,744	5,969	12,987	25,189	276,137	515,204	615,589	318,572	62,180	4,103	487
1st child . . . . .	733,281	396	41,628	1,140	2,632	5,502	11,397	20,957	159,110	225,015	210,181	80,640	14,940	1,230	141
2nd child . . . . .	609,339	9	5,698	29	97	432	1,445	3,695	83,603	168,566	218,541	112,751	18,803	1,211	157
3rd child . . . . .	292,502	—	581	—	5	27	109	440	25,292	78,382	109,730	66,088	11,768	590	71
4th child . . . . .	116,310	—	40	—	2	—	9	29	5,828	28,878	45,136	29,658	6,407	320	43
5th child . . . . .	43,547	—	11	—	1	—	1	9	1,142	9,039	16,929	12,752	3,448	197	29
6th child . . . . .	18,928	—	2	—	—	—	—	2	221	2,733	7,402	6,442	1,990	127	11
7th child . . . . .	9,227	—	1	—	—	—	—	1	55	775	3,316	3,762	1,233	78	7
8th child and over . . . . .	12,174	—	2	—	—	—	—	2	73	510	2,597	5,330	3,311	331	20
Not stated . . . . .	5,431	2	97	2	7	8	26	54	813	1,306	1,757	1,149	280	19	8
Hispanic <sup>3</sup>															
Total . . . . .	937,421	796	56,566	1,904	4,482	8,798	15,747	25,635	206,948	270,357	237,703	129,675	33,104	2,088	184
1st child . . . . .	338,553	773	48,137	1,842	4,253	8,030	13,465	20,547	113,271	89,880	57,756	23,281	4,953	450	52
2nd child . . . . .	281,175	20	7,471	55	209	712	2,054	4,441	66,161	92,277	73,062	34,529	7,171	441	43
3rd child . . . . .	174,331	1	766	2	10	36	187	531	20,699	56,238	57,212	31,621	7,386	373	35
4th child . . . . .	84,477	—	77	1	2	2	13	59	4,992	21,658	30,097	21,256	6,059	320	18
5th child . . . . .	33,937	—	9	—	1	—	2	6	1,102	6,645	11,914	10,339	3,703	209	16
6th child . . . . .	13,183	—	1	—	—	1	—	—	203	2,060	4,305	4,581	1,885	139	9
7th child . . . . .	5,331	—	—	—	—	—	—	—	44	610	1,641	2,022	940	71	3
8th child and over . . . . .	4,303	—	1	—	—	—	1	—	63	379	1,130	1,725	924	77	4
Not stated . . . . .	2,131	2	104	4	7	17	25	51	413	610	586	321	83	8	4

— Quantity zero.

<sup>1</sup>Includes births to race and origin groups not shown separately, such as Hispanic single-race Black, Hispanic single-race White, and non-Hispanic multiple-race women, as well as births with origin not stated.

<sup>2</sup>Race groups are single race. Race and Hispanic origin are reported separately on birth certificates. In this table, non-Hispanic women are classified by race. Race categories are consistent with 1997 Office of Management and Budget standards; see Technical Notes in this report. Single race is defined as only one race reported on the birth certificate.

<sup>3</sup>Includes all people of Hispanic origin of any race; see Technical Notes.

SOURCE: National Center for Health Statistics, National Vital Statistics System, natality data file.

**Table 4. Births, by age of mother, live-birth order, and Hispanic origin of mother: United States, 2022**

[Live-birth order is number of children born alive to mother. Includes births with stated origin of mother only]

Origin of mother and live-birth order	All ages	Younger than 15	15–19						20–24	25–29	30–34	35–39	40–44	45–49	50–54
			Total	15	16	17	18	19							
<b>Hispanic</b>															
Total	937,421	796	56,566	1,904	4,482	8,798	15,747	25,635	206,948	270,357	237,703	129,675	33,104	2,088	184
1st child	338,553	773	48,137	1,842	4,253	8,030	13,465	20,547	113,271	89,880	57,756	23,281	4,953	450	52
2nd child	281,175	20	7,471	55	209	712	2,054	4,441	66,161	92,277	73,062	34,529	7,171	441	43
3rd child	174,331	1	766	2	10	36	187	531	20,699	56,238	57,212	31,621	7,386	373	35
4th child	84,477	–	77	1	2	2	13	59	4,992	21,658	30,097	21,256	6,059	320	18
5th child	33,937	–	9	–	1	–	2	6	1,102	6,645	11,914	10,339	3,703	209	16
6th child	13,183	–	1	–	–	–	1	–	203	2,060	4,305	4,581	1,885	139	9
7th child	5,331	–	–	–	–	–	–	–	44	610	1,641	2,022	940	71	3
8th child and over	4,303	–	1	–	–	–	1	–	63	379	1,130	1,725	924	77	4
Not stated	2,131	2	104	4	7	17	25	51	413	610	586	321	83	8	4
<b>Central and South</b>															
American	207,843	284	12,659	541	1,091	2,132	3,590	5,305	41,251	55,454	54,524	33,630	9,387	601	53
1st child	72,713	278	10,568	519	1,026	1,916	3,013	4,094	21,400	18,175	14,132	6,522	1,457	164	17
2nd child	66,126	5	1,899	18	60	203	538	1,080	14,262	19,980	17,795	9,749	2,276	140	20
3rd child	40,236	1	158	2	3	8	35	110	4,435	11,788	13,051	8,415	2,266	114	8
4th child	17,614	–	14	1	1	1	1	10	856	3,962	6,134	4,965	1,611	70	2
5th child	6,694	–	2	–	–	–	–	2	182	1,070	2,197	2,287	901	52	3
6th child	2,437	–	–	–	–	–	–	–	29	282	737	923	438	27	1
7th child	952	–	–	–	–	–	–	–	9	55	250	408	217	11	2
8th child and over	714	–	–	–	–	–	–	–	13	47	137	294	200	23	–
Not stated	357	–	18	1	1	4	3	9	65	95	91	67	21	–	–
Cuban	26,390	2	582	10	36	85	150	301	3,863	7,136	9,086	4,805	841	67	8
1st child	12,345	2	518	10	35	81	135	257	2,677	3,749	3,628	1,500	238	29	4
2nd child	9,333	–	52	–	1	3	12	36	953	2,395	3,639	1,962	316	14	2
3rd child	3,214	–	10	–	–	–	3	7	180	692	1,252	899	173	7	1
4th child	955	–	–	–	–	–	–	–	32	204	361	285	63	10	–
5th child	269	–	1	–	–	–	–	1	10	49	105	73	28	2	1
6th child	115	–	–	–	–	–	–	–	2	16	52	33	12	–	–
7th child	47	–	–	–	–	–	–	–	1	5	16	19	6	–	–
8th child and over	48	–	–	–	–	–	–	–	1	11	13	16	5	2	–
Not stated	64	–	1	–	–	1	–	–	7	15	20	18	–	3	–
Dominican	33,531	14	1,235	29	78	165	355	608	6,243	9,607	9,666	5,275	1,388	85	18
1st child	13,053	14	1,082	28	76	152	311	515	3,996	3,921	2,664	1,096	256	19	5
2nd child	11,417	–	143	1	2	13	40	87	1,755	3,616	3,661	1,800	412	27	3
3rd child	6,114	–	8	–	–	–	3	5	391	1,529	2,278	1,496	395	11	6
4th child	2,041	–	–	–	–	–	–	–	72	395	752	599	204	17	2
5th child	546	–	–	–	–	–	–	–	13	82	199	171	74	7	–
6th child	170	–	–	–	–	–	–	–	4	30	49	64	22	1	–
7th child	58	–	–	–	–	–	–	–	1	6	18	20	11	2	–
8th child and over	44	–	–	–	–	–	–	–	2	2	14	16	9	1	–
Not stated	88	–	2	–	–	–	1	1	9	26	31	13	5	–	2

See footnotes at end of table.

**Table 4. Births, by age of mother, live-birth order, and Hispanic origin of mother: United States, 2022—Con.**

[Live-birth order refers to number of children born alive to mother. Includes births with stated origin of mother only]

Origin of mother and live-birth order	All ages	Younger than 15	15–19						20–24	25–29	30–34	35–39	40–44	45–49	50–54
			Total	15	16	17	18	19							
<b>Hispanic—Con.</b>															
Mexican . . . . .	510,194	360	32,116	1,002	2,538	4,920	8,979	14,677	118,647	151,390	124,391	65,649	16,533	1,039	69
1st child . . . . .	180,282	349	27,494	979	2,415	4,521	7,717	11,862	65,095	48,339	26,925	9,835	2,047	182	16
2nd child . . . . .	145,606	11	4,049	20	110	372	1,121	2,426	37,508	50,487	35,473	15,024	2,856	186	12
3rd child . . . . .	97,088	—	457	—	7	18	115	317	11,936	32,900	31,801	16,273	3,528	179	14
4th child . . . . .	50,702	—	48	—	1	—	10	37	3,024	13,200	18,150	12,641	3,448	183	8
5th child . . . . .	21,075	—	4	—	1	—	1	2	676	4,139	7,368	6,470	2,286	123	9
6th child . . . . .	8,332	—	—	—	—	—	—	—	126	1,340	2,659	2,926	1,183	93	5
7th child . . . . .	3,368	—	—	—	—	—	—	—	24	417	1,034	1,260	585	48	—
8th child and over . . . . .	2,662	—	—	—	—	—	—	—	32	246	700	1,080	559	42	3
Not stated . . . . .	1,079	—	64	3	4	9	15	33	226	322	281	140	41	3	2
Puerto Rican . . . . .	69,266	42	4,093	123	259	605	1,042	2,064	16,429	20,792	17,488	8,330	1,968	109	15
1st child . . . . .	26,491	41	3,521	120	246	544	913	1,698	9,116	7,017	4,598	1,795	380	21	2
2nd child . . . . .	21,360	—	504	3	11	56	114	320	5,041	7,051	5,596	2,559	574	31	4
3rd child . . . . .	11,815	—	50	—	—	3	9	38	1,649	4,083	3,772	1,845	390	25	1
4th child . . . . .	5,437	—	7	—	—	1	1	5	433	1,692	1,960	1,059	268	13	5
5th child . . . . .	2,182	—	1	—	—	—	1	—	93	579	835	517	146	9	2
6th child . . . . .	884	—	—	—	—	—	—	—	18	167	360	242	90	6	1
7th child . . . . .	390	—	—	—	—	—	—	—	2	62	155	121	47	3	—
8th child and over . . . . .	352	—	—	—	—	—	—	—	6	36	112	135	63	—	—
Not stated . . . . .	355	1	10	—	2	1	4	3	71	105	100	57	10	1	—
Other and unknown Hispanic . . . . .	90,197	94	5,881	199	480	891	1,631	2,680	20,515	25,978	22,548	11,986	2,987	187	21
1st child . . . . .	33,669	89	4,954	186	455	816	1,376	2,121	10,987	8,679	5,809	2,533	575	35	8
2nd child . . . . .	27,333	4	824	13	25	65	229	492	6,642	8,748	6,898	3,435	737	43	2
3rd child . . . . .	15,864	—	83	—	—	7	22	54	2,108	5,246	5,058	2,693	634	37	5
4th child . . . . .	7,728	—	8	—	—	—	1	7	575	2,205	2,740	1,707	465	27	1
5th child . . . . .	3,171	—	1	—	—	—	—	1	128	726	1,210	821	268	16	1
6th child . . . . .	1,245	—	1	—	—	1	—	—	24	225	448	393	140	12	2
7th child . . . . .	516	—	—	—	—	—	—	—	7	65	168	194	74	7	1
8th child and over . . . . .	483	—	1	—	—	—	1	—	9	37	154	184	88	9	1
Not stated . . . . .	188	1	9	—	—	2	2	5	35	47	63	26	6	1	—

— Quantity zero.

NOTES: In this table, Hispanic women are classified only by place of origin; non-Hispanic women are not shown. Other and unknown Hispanic includes origins not otherwise classified, including Spaniards. See Technical Notes in this report.

SOURCE: National Center for Health Statistics, National Vital Statistics System, natality data file.

**Table 5. Birth rates, by age of mother, live-birth order, and race and Hispanic origin of mother: United States, 2022**

[Rates are births per 1,000 women in specified age and race and Hispanic-origin group. Fertility rate computed by relating total births, regardless of age of mother, to females ages 15–44. Populations estimated as of July 1. Live-birth order is number of children born alive to mother. Data for live-birth order not stated are distributed]

Race and Hispanic origin of mother and live-birth order	Fertility rate	Age of mother									
		10–14	15–19			20–24	25–29	30–34	35–39	40–44	45–49 <sup>1</sup>
			Total	15–17	18–19						
<b>All races and origins<sup>2</sup></b>											
Total . . . . .	56.0	0.2	13.6	5.6	25.8	57.5	93.5	97.5	55.3	12.6	1.1
1st child . . . . .	21.6	0.2	11.7	5.2	21.4	32.4	37.0	30.8	13.0	2.7	0.3
2nd child . . . . .	17.8	0.0	1.8	0.4	3.8	17.7	30.6	32.9	18.3	3.5	0.3
3rd child . . . . .	9.4	*	0.2	0.0	0.4	5.6	16.1	18.8	11.9	2.6	0.2
4th child . . . . .	4.2	*	0.0	*	0.0	1.4	6.4	8.8	6.2	1.6	0.1
5th child . . . . .	1.7	*	0.0	*	0.0	0.3	2.2	3.6	2.9	0.9	0.1
6th and 7th child . . . . .	1.1	*	*	*	*	0.1	1.0	2.2	2.1	0.8	0.1
8th child and over . . . . .	0.4	*	*	*	*	0.0	0.1	0.5	0.9	0.5	0.1
<b>Non-Hispanic, single race<sup>3</sup></b>											
<b>American Indian and Alaska Native</b>											
Alaska Native . . . . .	50.6	0.4	22.5	9.5	42.5	74.3	82.8	68.1	36.3	9.1	0.5
1st child . . . . .	15.9	0.3	18.7	8.8	34.0	35.1	21.9	10.4	4.5	1.0	*
2nd child . . . . .	13.6	*	3.4	0.7	7.6	25.7	24.2	16.3	7.2	1.7	*
3rd child . . . . .	9.2	*	0.4	*	0.8	9.8	19.4	15.3	6.9	1.4	*
4th child . . . . .	5.6	*	*	*	*	2.9	10.4	11.3	6.7	1.3	*
5th child . . . . .	3.1	*	*	*	*	0.6	4.4	7.3	4.3	1.4	*
6th and 7th child . . . . .	2.4	*	*	*	*	*	2.4	5.8	4.6	1.3	*
8th child and over . . . . .	0.8	*	*	*	*	*	*	1.7	2.2	1.0	*
<b>Asian</b>											
Asian . . . . .	49.4	*	1.9	0.7	3.7	16.4	58.6	104.0	70.9	17.0	1.8
1st child . . . . .	22.1	*	1.7	0.7	3.2	10.8	34.1	49.2	22.3	4.7	0.6
2nd child . . . . .	18.2	*	0.2	*	0.4	4.1	16.9	38.9	31.2	6.5	0.6
3rd child . . . . .	6.0	*	*	*	*	1.2	5.2	10.8	11.7	3.4	0.3
4th child . . . . .	1.9	*	*	*	*	0.3	1.7	3.3	3.7	1.4	0.2
5th child . . . . .	0.7	*	*	*	*	0.0	0.5	1.2	1.3	0.6	0.1
6th and 7th child . . . . .	0.4	*	*	*	*	*	0.2	0.6	0.7	0.4	0.1
8th child and over . . . . .	0.1	*	*	*	*	*	0.0	0.1	0.2	0.1	*
<b>Black</b>											
Black . . . . .	56.1	0.3	20.3	9.0	37.7	71.1	90.7	79.8	50.4	13.8	1.4
1st child . . . . .	19.6	0.3	17.1	8.3	30.7	39.1	29.1	17.7	9.2	2.5	0.4
2nd child . . . . .	16.0	*	2.8	0.7	6.1	21.1	28.7	23.5	13.4	3.3	0.3
3rd child . . . . .	10.2	*	0.3	0.0	0.8	7.7	17.8	18.1	12.1	3.0	0.2
4th child . . . . .	5.4	*	0.0	*	0.1	2.4	8.9	10.5	7.3	2.1	0.2
5th child . . . . .	2.5	*	*	*	*	0.6	3.8	5.2	3.8	1.2	0.1
6th and 7th child . . . . .	1.8	*	*	*	*	0.2	2.1	3.7	3.1	1.1	0.1
8th child and over . . . . .	0.6	*	*	*	*	0.0	0.3	1.0	1.4	0.7	0.1
<b>Native Hawaiian and Pacific Islander</b>											
Pacific Islander . . . . .	74.8	*	20.5	7.3	40.7	123.0	132.4	98.0	56.6	15.5	1.3
1st child . . . . .	22.0	*	17.3	7.1	32.8	58.8	33.9	16.6	7.6	1.6	*
2nd child . . . . .	18.7	*	2.8	*	6.8	40.0	37.8	19.3	10.4	3.0	*
3rd child . . . . .	13.6	*	*	*	*	16.9	28.6	21.4	11.0	2.1	*
4th child . . . . .	8.7	*	*	*	*	5.6	17.2	16.6	8.7	2.4	*
5th child . . . . .	5.6	*	*	*	*	1.2	9.6	11.7	7.4	2.0	*
6th and 7th child . . . . .	4.6	*	*	*	*	*	4.7	10.1	7.9	2.5	*
8th child and over . . . . .	1.5	*	*	*	*	*	*	2.5	3.6	2.0	*
<b>White</b>											
White . . . . .	53.1	0.1	9.1	3.1	17.9	48.3	91.1	100.4	53.0	10.7	0.9
1st child . . . . .	21.2	0.1	7.9	3.0	15.2	27.9	39.9	34.4	13.5	2.6	0.3
2nd child . . . . .	17.6	*	1.1	0.2	2.4	14.6	29.9	35.7	18.8	3.2	0.3
3rd child . . . . .	8.5	*	0.1	0.0	0.3	4.4	13.9	17.9	11.0	2.0	0.1
4th child . . . . .	3.4	*	0.0	*	0.0	1.0	5.1	7.4	5.0	1.1	0.1
5th child . . . . .	1.3	*	*	*	*	0.2	1.6	2.8	2.1	0.6	0.0
6th and 7th child . . . . .	0.8	*	*	*	*	0.0	0.6	1.8	1.7	0.6	0.0
8th child and over . . . . .	0.4	*	*	*	*	0.0	0.1	0.4	0.9	0.6	0.1

**Table 5. Birth rates, by age of mother, live-birth order, and race and Hispanic origin of mother: United States, 2022—Con.**

[Rates are births per 1,000 women in specified age and race and Hispanic-origin group. Fertility rate computed by relating total births, regardless of age of mother, to females ages 15–44. Populations estimated as of July 1. Live-birth order is number of children born alive to mother. Data for live-birth order not stated are distributed]

Race and Hispanic origin of mother and live-birth order	Fertility rate	Age of mother									
		10–14	15–19			20–24	25–29	30–34	35–39	40–44	45–49 <sup>1</sup>
			Total	15–17	18–19						
Hispanic <sup>4</sup>											
Total . . . . .	65.7	0.3	21.3	9.3	40.1	79.2	113.8	103.1	59.5	15.5	1.2
1st child . . . . .	23.8	0.3	18.1	8.7	33.0	43.4	37.9	25.1	10.7	2.3	0.3
2nd child . . . . .	19.8	0.0	2.8	0.6	6.3	25.4	38.9	31.8	15.9	3.4	0.2
3rd child . . . . .	12.2	*	0.3	0.0	0.7	7.9	23.7	24.9	14.5	3.5	0.2
4th child . . . . .	5.9	*	0.0	*	0.1	1.9	9.1	13.1	9.8	2.8	0.2
5th child . . . . .	2.4	*	*	*	*	0.4	2.8	5.2	4.8	1.7	0.1
6th and 7th child . . . . .	1.3	*	*	*	*	0.1	1.1	2.6	3.0	1.3	0.1
8th child and over . . . . .	0.3	*	*	*	*	0.0	0.2	0.5	0.8	0.4	0.0

0.0 Quantity more than zero but less than 0.05.

\* Estimate does not meet National Center for Health Statistics standards of reliability.

<sup>1</sup>Birth rates computed by relating births to women ages 45 and older to women ages 45–49; see Technical Notes in this report.

<sup>2</sup>Includes births to race and origin groups not shown separately, such as Hispanic single-race Black, Hispanic single-race White, and non-Hispanic multiple-race women, as well as births with origin not stated.

<sup>3</sup>Race groups are single race. Race and Hispanic origin are reported separately on birth certificates. In this table, non-Hispanic women are classified by race. Race categories are consistent with 1997 Office of Management and Budget standards; see Technical Notes. Single race is defined as only one race reported on the birth certificate.

<sup>4</sup>Includes all people of Hispanic origin of any race; see Technical Notes.

SOURCE: National Center for Health Statistics, National Vital Statistics System, natality data file.

**Table 6. Births, by race and Hispanic origin of mother: United States, each state and territory, 2022**

[By place of residence]

Area	All races and origins <sup>2</sup>	Non-Hispanic, single race <sup>1</sup>					Hispanic <sup>3</sup>
		American Indian and Alaska Native	Asian	Black	Native Hawaiian and Pacific Islander	White	
United States <sup>4</sup>	3,667,758	25,721	218,994	511,439	10,122	1,840,739	937,421
Alabama	58,149	131	782	16,067	56	33,725	6,231
Alaska	9,359	1,727	563	249	311	4,639	794
Arizona	78,547	3,436	2,748	4,425	205	30,499	34,839
Arkansas	35,471	194	777	6,301	545	22,539	4,227
California	419,104	1,297	56,915	20,050	1,601	110,370	203,312
Colorado	62,383	336	2,450	2,981	203	35,076	18,982
Connecticut	35,332	30	1,878	4,298	3	18,681	9,597
Delaware	10,816	13	553	2,853	6	5,035	1,996
District of Columbia	8,075	11	393	3,495	3	2,602	1,348
Florida	224,433	231	6,592	47,635	155	91,763	74,864
Georgia	126,130	104	5,640	42,042	110	53,638	21,202
Hawaii	15,535	30	3,854	326	1,486	2,896	2,701
Idaho	22,391	194	378	258	66	16,894	4,002
Illinois	128,350	87	8,277	19,296	39	68,107	29,710
Indiana	79,649	50	2,458	10,119	76	55,178	9,939
Iowa	36,506	136	1,032	2,562	323	27,527	4,172
Kansas	34,401	163	1,055	2,208	78	23,669	6,309
Kentucky	52,315	59	1,151	5,043	92	40,484	4,291
Louisiana	56,479	302	1,045	20,229	29	28,105	5,936
Maine	12,093	76	163	679	6	10,640	338
Maryland	68,782	77	4,480	20,438	36	27,333	14,398
Massachusetts	68,584	57	5,630	7,125	21	37,682	15,383
Michigan	102,321	394	3,989	17,235	40	70,340	7,127
Minnesota	64,015	774	4,931	7,923	95	42,246	6,040
Mississippi	34,675	231	396	14,035	15	17,703	1,930
Missouri	68,985	160	1,684	9,188	265	49,846	5,224
Montana	11,175	946	134	63	15	8,995	678
Nebraska	24,345	261	816	1,597	37	16,120	4,815
Nevada	33,193	218	2,548	4,334	358	10,961	13,019
New Hampshire	12,077	8	441	267	8	10,318	812
New Jersey	102,893	34	10,561	12,911	51	47,356	29,931
New Mexico	21,614	2,221	412	403	19	5,531	12,617
New York	207,774	327	20,652	27,935	70	104,103	50,131
North Carolina	121,562	1,401	4,824	26,375	144	62,762	22,568
North Dakota	9,567	613	183	585	30	6,965	671
Ohio	128,231	89	3,923	20,380	115	90,671	9,062
Oklahoma	48,332	4,355	1,310	3,689	232	26,224	8,462
Oregon	39,493	370	2,151	1,007	374	23,034	8,510
Pennsylvania	130,252	162	6,212	16,616	40	85,031	18,118
Rhode Island	10,269	38	418	842	3	5,673	2,965
South Carolina	57,820	124	1,176	15,333	74	32,323	7,073
South Dakota	11,201	1,463	191	362	20	8,008	726
Tennessee	82,265	87	1,877	14,514	72	52,818	11,048
Texas	389,741	685	20,794	47,804	579	121,868	190,889
Utah	45,768	303	1,210	606	575	32,461	8,920
Vermont	5,316	13	145	116	—	4,754	163
Virginia	95,630	151	7,140	18,543	114	51,085	15,943
Washington	83,333	861	9,159	3,797	1,284	44,084	17,190
West Virginia	16,929	14	178	566	2	15,300	412
Wisconsin	60,049	499	2,661	5,688	34	42,455	6,971
Wyoming	6,049	178	64	46	7	4,622	835

See footnotes at end of table.

**Table 6. Births, by race and Hispanic origin of mother: United States, each state and territory, 2022—Con.**

[By place of residence]

Area	All races and origins <sup>2</sup>	Non-Hispanic, single race <sup>1</sup>					Hispanic <sup>3</sup>
		American Indian and Alaska Native	Asian	Black	Native Hawaiian and Pacific Islander	White	
Puerto Rico . . . . .	19,112	4	24	45	—	311	18,707
U.S. Virgin Islands . . . . .	868	3	4	503	—	88	181
Guam . . . . .	2,518	3	594	31	1,595	166	26
American Samoa . . . . .	---	---	---	---	---	---	---
Northern Marianas . . . . .	467	—	152	—	271	5	1

— Quantity zero.

--- Data not available.

<sup>1</sup>Race groups are single race. Race and Hispanic origin are reported separately on birth certificates. In this table, non-Hispanic women are classified by race. Race categories are consistent with 1997 Office of Management and Budget standards; see Technical Notes in this report. Single race is defined as only one race reported on the birth certificate.

<sup>2</sup>Includes births to race and origin groups not shown separately, such as Hispanic single-race Black, Hispanic single-race White, and non-Hispanic multiple-race women, as well as births with origin not stated.

<sup>3</sup>Includes all people of Hispanic origin of any race; see Technical Notes.

<sup>4</sup>Excludes data for the territories.

SOURCE: National Center for Health Statistics, National Vital Statistics System, natality data file.



**Table 7. Births, by Hispanic origin of mother: United States, each state and territory, 2022**

[By place of residence]

Area	Total	Central and South American	Cuban	Dominican	Mexican	Puerto Rican	Other and unknown Hispanic
United States <sup>1</sup> . . . . .	937,421	207,843	26,390	33,531	510,194	69,266	90,197
Alabama . . . . .	6,231	2,598	61	49	3,123	307	93
Alaska . . . . .	794	92	18	50	413	108	113
Arizona . . . . .	34,839	1,579	260	94	29,871	583	2,452
Arkansas . . . . .	4,227	759	26	11	2,899	134	398
California . . . . .	203,312	31,522	754	219	147,602	2,022	21,193
Colorado . . . . .	18,982	2,184	225	49	12,899	552	3,073
Connecticut . . . . .	9,597	2,966	122	979	796	4,160	574
Delaware . . . . .	1,996	654	17	78	683	368	196
District of Columbia . . . . .	1,348	883	26	45	155	50	189
Florida . . . . .	74,864	26,849	16,390	3,679	11,524	13,456	2,966
Georgia . . . . .	21,202	6,195	442	372	11,765	1,480	948
Hawaii . . . . .	2,701	166	34	26	865	896	714
Idaho . . . . .	4,002	322	21	8	2,972	60	619
Illinois . . . . .	29,710	3,473	240	122	23,215	1,978	682
Indiana . . . . .	9,939	2,364	100	96	5,747	540	1,092
Iowa . . . . .	4,172	904	58	18	2,861	159	172
Kansas . . . . .	6,309	1,119	47	21	4,604	165	353
Kentucky . . . . .	4,291	1,368	502	43	1,782	247	349
Louisiana . . . . .	5,936	3,542	122	105	1,264	202	701
Maine . . . . .	338	109	12	16	84	83	34
Maryland . . . . .	14,398	10,392	132	431	1,610	736	1,097
Massachusetts . . . . .	15,383	4,658	136	3,321	508	4,099	2,661
Michigan . . . . .	7,127	767	174	79	5,066	436	605
Minnesota . . . . .	6,040	1,727	68	45	3,642	258	300
Mississippi . . . . .	1,930	723	23	18	794	119	253
Missouri . . . . .	5,224	1,335	116	41	2,857	314	561
Montana . . . . .	678	74	14	2	455	35	98
Nebraska . . . . .	4,815	1,352	149	15	2,984	107	208
Nevada . . . . .	13,019	1,691	486	53	9,505	427	857
New Hampshire . . . . .	812	215	13	124	95	192	173
New Jersey . . . . .	29,931	12,268	729	5,604	4,158	5,463	1,709
New Mexico . . . . .	12,617	260	69	10	6,699	108	5,471
New York . . . . .	50,131	18,266	624	11,325	6,443	9,318	4,155
North Carolina . . . . .	22,568	7,739	443	690	10,582	2,043	1,071
North Dakota . . . . .	671	56	15	7	463	58	72
Ohio . . . . .	9,062	2,730	132	253	3,431	1,937	579
Oklahoma . . . . .	8,462	1,342	78	22	5,841	284	895
Oregon . . . . .	8,510	1,041	88	14	6,257	180	930
Pennsylvania . . . . .	18,118	3,355	348	3,467	2,338	7,365	1,245
Rhode Island . . . . .	2,965	988	11	937	161	714	154
South Carolina . . . . .	7,073	2,726	147	131	2,795	700	574
South Dakota . . . . .	726	234	18	4	341	50	79
Tennessee . . . . .	11,048	5,003	198	75	4,541	541	690
Texas . . . . .	190,889	22,985	2,200	472	136,720	2,992	25,520
Utah . . . . .	8,920	2,076	40	57	5,757	196	794
Vermont . . . . .	163	45	8	6	51	39	14
Virginia . . . . .	15,943	10,878	239	124	3,298	1,233	171
Washington . . . . .	17,190	2,102	141	60	12,561	569	1,757
West Virginia . . . . .	412	138	12	9	149	61	43
Wisconsin . . . . .	6,971	967	56	53	4,436	1,120	339
Wyoming . . . . .	835	62	6	2	532	22	211

**Table 7. Births, by Hispanic origin of mother: United States, each state and territory, 2022—Con.**

[By place of residence]

Area	Total	Central and South American	Cuban	Dominican	Mexican	Puerto Rican	Other and unknown Hispanic
Puerto Rico . . . . .	18,707	130	15	379	34	18,140	9
U.S. Virgin Islands . . . . .	181	16	—	76	2	10	77
Guam . . . . .	26	4	2	—	10	3	7
American Samoa . . . . .	---	---	---	---	---	---	---
Northern Marianas . . . . .	1	1	—	—	—	—	—

— Quantity zero.

--- Data not available.

†Excludes data for the territories.

NOTES: In this table, Hispanic women are classified by place of origin; non-Hispanic women are not shown. Other and unknown Hispanic includes origins not otherwise classified, including Spaniards. See Technical Notes in this report.

SOURCE: National Center for Health Statistics, National Vital Statistics System, natality data file.

**Table 8. Birth rates, by age of mother: United States, each state and territory, 2022**

[By place of residence. Fertility rates are births per 1,000 females ages 15–44; total fertility rates are sums of birth rates for 5-year age groups multiplied by 5; birth rates by age are births per 1,000 women in specified age group estimated in each area. Populations estimated as of July 1]

Area	Birth rate	Fertility rate	Total fertility rate	Age of mother									
				10–14	15–19			20–24	25–29	30–34	35–39	40–44	45–49 <sup>1</sup>
					Total	15–17	18–19						
United States <sup>2</sup>	11.0	56.0	1,656.5	0.2	13.6	5.6	25.8	57.5	93.5	97.5	55.3	12.6	1.1
Alabama	11.5	58.7	1,742.5	0.3	20.9	9.4	37.4	79.5	114.3	85.8	39.6	7.6	0.5
Alaska	12.8	64.9	1,885.0	*	16.9	4.9	39.8	85.9	109.5	96.0	54.3	13.6	*
Arizona	10.7	54.9	1,618.0	0.2	15.1	6.0	28.8	60.3	97.1	91.2	47.9	11.0	0.8
Arkansas	11.6	60.2	1,789.0	0.4	24.6	9.5	48.9	90.8	115.0	81.9	36.9	7.9	0.3
California	10.7	52.8	1,544.0	0.1	9.8	3.8	18.9	44.2	76.5	93.7	65.6	17.1	1.8
Colorado	10.7	51.5	1,488.5	*	11.1	4.4	21.1	49.5	77.0	91.8	55.0	12.2	1.0
Connecticut	9.7	50.7	1,545.0	*	6.4	2.9	10.9	30.5	73.5	115.2	67.4	14.8	1.1
Delaware	10.6	57.3	1,708.5	*	14.7	6.6	26.1	60.9	98.0	96.6	57.2	13.1	1.2
District of Columbia	12.0	44.9	1,243.0	*	12.5	7.7	16.1	34.2	37.6	67.3	69.2	24.5	2.9
Florida	10.1	55.6	1,644.5	0.2	13.1	5.2	25.5	55.9	93.5	95.8	55.9	13.5	1.0
Georgia	11.6	56.0	1,668.5	0.2	16.6	6.6	32.5	66.4	97.4	91.3	49.5	11.3	1.0
Hawaii	10.8	59.3	1,736.5	*	11.7	3.9	24.7	63.7	93.7	96.1	63.3	17.0	1.7
Idaho	11.5	58.4	1,805.5	*	10.9	4.0	19.5	74.5	121.0	96.1	47.6	10.3	0.7
Illinois	10.2	51.8	1,541.0	0.1	11.3	4.4	22.2	46.3	81.0	99.0	57.0	12.4	1.1
Indiana	11.7	59.7	1,779.5	0.2	16.7	6.4	32.8	71.9	114.7	98.0	44.6	9.2	0.6
Iowa	11.4	59.9	1,836.5	*	12.4	5.6	22.1	56.2	126.2	115.5	46.8	9.5	0.6
Kansas	11.7	60.3	1,827.0	*	16.2	6.5	31.0	65.5	117.3	107.8	48.2	9.5	0.7
Kentucky	11.6	61.1	1,816.0	0.3	21.8	8.0	44.5	85.8	115.7	89.2	41.7	8.2	0.5
Louisiana	12.3	61.8	1,849.5	0.4	23.7	9.8	45.8	87.1	117.0	89.3	43.0	8.9	0.5
Maine	8.7	49.7	1,469.5	*	8.4	2.8	16.6	48.1	87.3	89.2	50.3	9.9	0.6
Maryland	11.2	56.9	1,687.5	0.2	10.9	4.8	20.4	47.9	87.4	108.4	65.1	16.0	1.6
Massachusetts	9.8	48.7	1,435.0	*	5.8	2.4	9.9	26.1	60.2	106.9	70.1	16.4	1.4
Michigan	10.2	54.0	1,597.5	0.2	11.6	4.4	22.6	50.6	97.6	99.8	49.3	9.6	0.8
Minnesota	11.2	58.2	1,752.0	0.1	8.2	3.2	16.2	43.0	100.8	122.7	61.9	12.5	1.2
Mississippi	11.8	59.7	1,787.0	0.6	26.4	11.6	49.1	90.6	116.0	81.0	35.5	6.9	0.4
Missouri	11.2	57.7	1,714.5	0.2	16.9	6.7	32.9	68.5	107.7	95.6	44.9	8.6	0.5
Montana	10.0	53.2	1,578.0	*	12.2	4.5	24.7	55.6	97.2	94.5	45.7	9.6	0.7
Nebraska	12.4	63.6	1,938.5	*	14.1	5.9	26.7	59.1	125.5	123.5	53.2	11.2	0.9
Nevada	10.4	53.2	1,556.0	*	14.0	4.8	31.0	63.4	90.6	82.5	48.3	11.4	0.9
New Hampshire	8.7	47.9	1,408.0	*	4.6	1.5	9.0	30.2	76.8	105.0	53.8	10.3	0.8
New Jersey	11.1	58.7	1,745.5	0.1	8.2	3.4	16.1	41.4	80.3	122.7	77.4	17.4	1.6
New Mexico	10.2	53.1	1,586.5	*	19.7	9.1	36.0	70.9	96.6	79.7	40.2	9.1	0.8
New York	10.6	53.6	1,555.0	0.1	8.6	3.4	15.7	44.4	72.3	96.6	68.2	18.9	1.9
North Carolina	11.4	57.6	1,707.5	0.2	15.0	6.5	27.1	64.7	99.5	98.0	51.8	11.4	0.9
North Dakota	12.3	62.0	1,838.0	*	11.7	4.4	20.9	52.6	122.8	119.1	50.3	10.6	*
Ohio	10.9	57.3	1,695.5	0.2	15.4	6.0	30.5	66.3	103.1	96.8	47.6	9.1	0.6
Oklahoma	12.0	60.4	1,798.5	0.2	21.2	8.7	40.7	85.1	115.2	88.9	40.5	8.0	0.6
Oregon	9.3	47.3	1,389.5	*	10.1	3.8	19.9	47.4	77.7	80.9	49.3	11.4	1.0
Pennsylvania	10.0	53.3	1,584.0	0.1	10.6	4.7	18.2	47.8	90.4	101.3	54.5	11.2	0.9
Rhode Island	9.4	47.5	1,404.5	*	8.3	3.8	13.0	34.4	74.1	93.4	55.9	13.7	1.0

See footnotes at end of table.

**Table 8. Birth rates, by age of mother: United States, each state and territory, 2022—Con.**

[By place of residence. Fertility rates are births per 1,000 females ages 15–44; total fertility rates are sums of birth rates for 5-year age groups multiplied by 5; birth rates by age are births per 1,000 women in specified age group estimated in each area. Populations estimated as of July 1]

Area	Birth rate	Fertility rate	Total fertility rate	Age of mother									
				10–14	15–19			20–24	25–29	30–34	35–39	40–44	45–49 <sup>1</sup>
					Total	15–17	18–19						
South Carolina . . . . .	10.9	57.0	1,695.5	0.3	17.3	8.3	30.3	68.0	104.6	91.3	46.8	10.1	0.7
South Dakota . . . . .	12.3	66.5	2,012.0	*	17.4	7.7	32.7	68.5	136.2	118.5	51.7	9.3	*
Tennessee . . . . .	11.7	59.3	1,733.0	0.3	21.0	8.4	41.6	76.9	103.4	89.6	45.4	9.3	0.7
Texas . . . . .	13.0	61.9	1,843.5	0.3	20.4	9.0	38.6	74.8	108.1	99.7	52.7	11.8	0.9
Utah . . . . .	13.5	61.3	1,852.5	*	9.0	3.1	18.1	60.0	130.1	108.4	51.1	11.0	0.8
Vermont . . . . .	8.2	44.3	1,351.5	*	5.8	2.4	9.5	31.3	70.0	93.9	57.3	11.0	*
Virginia . . . . .	11.0	55.6	1,653.5	0.2	11.2	4.3	21.0	51.0	90.7	102.8	59.9	13.6	1.3
Washington . . . . .	10.7	53.3	1,533.0	0.1	9.6	3.2	20.0	50.9	82.3	91.6	57.4	13.4	1.3
West Virginia . . . . .	9.5	54.0	1,623.5	*	19.8	6.7	39.3	81.1	107.6	75.1	34.2	6.1	0.6
Wisconsin . . . . .	10.2	54.2	1,648.5	*	9.8	4.1	18.3	44.4	100.0	114.9	50.2	9.7	0.6
Wyoming . . . . .	10.4	55.4	1,693.5	*	16.0	5.4	33.5	72.2	111.8	90.2	40.7	7.3	*
Puerto Rico . . . . .	5.9	31.1	914.0	*	12.6	4.4	24.7	53.3	53.2	38.3	20.8	4.3	0.2
U.S. Virgin Islands . . . . .	8.2	46.8	1,427.0	*	15.0	*	29.9	74.3	80.6	69.9	33.8	11.2	*
Guam . . . . .	14.9	76.9	2,256.5	*	19.8	9.0	37.1	95.5	128.0	114.6	71.6	20.1	*
American Samoa . . . . .	---	---	---	---	---	---	---	---	---	---	---	---	---
Northern Marianas . . . . .	9.1	51.5	1,734.5	*	9.4	*	*	59.8	73.6	109.8	73.9	19.2	*

\* Estimate does not meet National Center for Health Statistics standards of reliability.

--- Data not available.

<sup>1</sup>Birth rates computed by relating births to women ages 45 and older to women ages 45–49; see Technical Notes in this report.

<sup>2</sup>Excludes data for the territories.

NOTES: Population data for computing birth rates were provided by the U.S. Census Bureau. Rates by state may differ from rates computed on the basis of other population estimates.

SOURCE: National Center for Health Statistics, National Vital Statistics System, natality data file.

**Table 9. Births to unmarried women, by age and race and Hispanic origin of mother: United States, 2022**

Age of mother	Non-Hispanic, single race <sup>1</sup>						
	All races and origins <sup>2</sup>	American Indian and Alaska Native	Asian	Black	Native Hawaiian and Pacific Islander	White	Hispanic <sup>3</sup>
	Number						
All ages . . . . .	1,461,305	17,511	26,942	354,351	5,295	498,291	498,971
Younger than 15 . . . . .	1,816	32	4	481	4	404	791
15–19 . . . . .	131,713	1,863	740	28,682	384	41,984	51,867
15–17 . . . . .	34,730	489	196	7,787	92	9,585	14,864
18–19 . . . . .	96,983	1,374	544	20,895	292	32,399	37,003
20–24 . . . . .	433,087	5,453	3,845	99,618	1,849	152,945	150,477
25–29 . . . . .	413,703	4,674	7,224	104,305	1,530	139,390	139,886
30–34 . . . . .	296,005	3,607	7,917	77,822	939	99,909	94,827
35–39 . . . . .	145,178	1,518	5,368	34,498	464	50,212	47,710
40 and older . . . . .	39,803	364	1,844	8,945	125	13,447	13,413
	Percent						
All ages . . . . .	39.8	68.1	12.3	69.3	52.3	27.1	53.2
Younger than 15 . . . . .	99.5	100.0	*	99.8	*	99.3	99.4
15–19 . . . . .	91.6	96.8	75.4	98.2	89.1	87.4	91.7
15–17 . . . . .	98.0	99.0	93.3	99.6	98.9	97.0	97.9
18–19 . . . . .	89.5	96.1	70.5	97.7	86.4	84.9	89.4
20–24 . . . . .	67.8	81.0	38.4	89.9	70.9	55.4	72.7
25–29 . . . . .	40.8	64.2	17.2	73.3	52.5	27.1	51.7
30–34 . . . . .	26.5	58.2	8.8	58.1	38.6	16.2	39.9
35–39 . . . . .	23.9	52.8	8.8	46.9	33.7	15.8	36.8
40 and older . . . . .	27.5	53.6	12.3	42.2	35.4	20.1	37.9

\* Estimate does not meet National Center for Health Statistics standards of reliability.

<sup>1</sup>Race groups are non-Hispanic, single race. Race and Hispanic origin are reported separately on birth certificates. In this table, non-Hispanic women are classified by race. Race categories are consistent with 1997 Office of Management and Budget standards; see Technical Notes in this report. Single race is defined as only one race reported on the birth certificate.

<sup>2</sup>Includes births to race and origin groups not shown separately, such as Hispanic single-race Black, Hispanic single-race White, and non-Hispanic multiple-race women, as well as births with origin not stated.

<sup>3</sup>Includes all people of Hispanic origin of any race; see Technical Notes.

NOTE: For New York, mother's marital status is inferred; see reference 9 in this report.

SOURCE: National Center for Health Statistics, National Vital Statistics System, natality data file.

**Table 10. Birth rates for unmarried women: United States, 2010–2022, and by age and race and Hispanic origin of mother: United States, 2016–2022**

[Rates are births to unmarried women per 1,000 unmarried women. Populations estimated as of July 1 for all years]

Race and Hispanic origin and year	Fertility rate <sup>1</sup>	Age of mother							
		15–19			20–24	25–29	30–34	35–39	40–44 <sup>2</sup>
		Total	15–17	18–19					
<b>All races and origins<sup>3</sup></b>									
2022.....	37.2	12.7	5.6	23.6	44.0	58.4	58.6	38.8	11.6
2021.....	37.8	13.0	5.6	24.4	47.4	58.7	58.5	38.2	11.4
2020.....	38.4	14.0	6.1	26.0	49.2	59.9	58.3	36.9	11.3
2019.....	39.9	15.4	6.6	28.3	51.6	61.5	60.6	36.0	11.1
2018.....	40.1	16.0	7.1	29.2	52.2	62.8	59.5	35.2	10.6
2017.....	41.0	17.1	7.7	31.4	54.2	64.4	57.9	36.0	10.1
2016.....	42.4	18.5	8.6	33.5	56.6	65.8	59.2	35.6	10.0
2015.....	43.4	20.2	9.6	36.5	59.7	66.9	60.3	34.1	9.0
2014.....	43.9	22.0	10.6	39.4	61.6	67.6	58.1	33.4	8.5
2013.....	44.3	24.0	11.9	42.1	63.1	66.7	56.6	31.8	8.3
2012.....	45.3	26.7	13.7	45.8	64.7	67.2	56.3	30.9	8.5
2011.....	46.0	28.4	14.9	48.2	66.7	67.8	56.2	29.9	8.2
2010.....	47.5	31.1	16.8	52.0	70.0	69.2	56.3	29.6	8.0
<b>Non-Hispanic, single race<sup>4</sup></b>									
<b>Black:</b>									
2022.....	50.2	20.3	9.1	37.6	67.6	78.9	64.8	38.5	11.8
2021.....	52.1	21.8	9.4	40.8	76.8	82.9	63.9	36.7	10.7
2020.....	54.6	23.7	10.6	43.2	80.8	88.3	65.1	37.0	10.4
2019.....	56.7	25.7	11.3	46.2	83.5	87.4	68.4	37.5	10.5
2018.....	56.4	26.1	12.0	46.1	85.0	85.9	68.2	35.6	9.7
2017.....	57.5	27.3	12.6	48.7	88.8	89.3	66.2	35.1	8.9
2016.....	57.9	29.0	13.9	51.2	90.0	89.6	64.4	33.8	8.9
<b>White:</b>									
2022.....	25.8	8.1	3.1	15.5	30.7	40.7	42.8	28.6	7.9
2021.....	27.0	8.4	3.1	16.3	33.8	42.1	45.2	29.3	8.1
2020.....	27.5	9.0	3.3	17.5	35.1	42.8	45.1	27.8	8.2
2019.....	28.6	10.0	3.7	19.3	36.7	44.8	45.7	27.0	7.9
2018.....	28.8	10.6	4.0	20.3	37.6	45.7	43.9	25.9	7.5
2017.....	29.2	11.5	4.4	22.1	38.9	46.2	41.9	25.3	7.2
2016.....	30.3	12.4	5.0	23.5	40.9	47.3	43.0	25.2	6.8
<b>Hispanic<sup>5</sup></b>									
2022.....	57.4	20.0	9.3	36.8	66.6	92.0	93.0	65.2	21.4
2021.....	55.7	19.7	9.2	36.4	68.0	87.0	88.7	61.9	21.4
2020.....	55.5	21.2	10.1	38.7	69.3	87.9	84.8	59.4	20.2
2019.....	57.9	23.2	11.3	41.5	73.8	90.6	91.5	55.8	20.0
2018.....	59.5	24.4	12.2	43.4	74.6	95.7	96.1	57.4	20.0
2017.....	62.5	26.3	13.3	47.0	78.6	102.3	98.7	64.2	18.7
2016.....	66.0	29.2	15.1	51.2	83.1	106.4	103.6	65.0	19.3

<sup>1</sup>Computed by relating total births to unmarried mothers, regardless of age, to unmarried women ages 15–44.<sup>2</sup>Rates computed by relating births to unmarried women ages 40 and older to unmarried women ages 40–44; see Technical Notes in this report.<sup>3</sup>Includes births to race and origin groups not shown separately, such as Hispanic single-race Black, Hispanic single-race White, and non-Hispanic multiple-race women, as well as births with origin not stated.<sup>4</sup>Race groups are single race. Race and Hispanic origin are reported separately on birth certificates. In this table, non-Hispanic women are classified by race. Race categories are consistent with 1997 Office of Management and Budget standards; see Technical Notes. Single race is defined as only one race reported on the birth certificate.<sup>5</sup>Includes all people of Hispanic origin of any race; see Technical Notes.

NOTES: Rates for 2020 have been revised and may differ from those published in "Births: Final Data for 2020": see Technical Notes. For New York, mother's marital status is inferred; see reference 9 in this report.

SOURCE: National Center for Health Statistics, National Vital Statistics System, natality data file.

**Table 11. Selected demographic characteristics of births, by race and Hispanic origin of mother: United States, 2022**

[Birth rates are births per 1,000 population. Fertility rates are computed by relating total births, regardless of age of mother, to females ages 15–44. Total fertility rates are sums of birth rates for 5-year age groups multiplied by 5. Unmarried rates are births to unmarried women per 1,000 unmarried women. Populations estimated as of July 1. Mean age at first birth is the arithmetic average of the age of mothers at the time of birth, computed directly from the frequency of first births by age of mother]

Characteristic	Non-Hispanic, single race <sup>1</sup>						
	All races and origins <sup>2</sup>	American Indian and Alaska Native	Asian	Black	Native Hawaiian and Pacific Islander	White	Hispanic <sup>3</sup>
				Number			
Births . . . . .	3,667,758	25,721	218,994	511,439	10,122	1,840,739	937,421
				Rate			
Birth rate . . . . .	11.0	10.8	11.1	12.3	16.5	9.5	14.7
Fertility rate . . . . .	56.0	50.6	49.4	56.1	74.8	53.1	65.7
Total fertility rate . . . . .	1,656.5	1,470.0	1,353.0	1,639.0	2,237.5	1,568.0	1,969.5
Unmarried rate . . . . .	37.2	51.8	12.9	50.2	64.3	25.8	57.4
				Ratio			
Sex ratio <sup>4</sup> . . . . .	1,045	1,032	1,061	1,034	1,075	1,050	1,038
				Percent			
Births to mothers younger than age 20 . . . . .	4.0	7.6	0.5	5.8	4.3	2.6	6.1
Quadruplet and higher-order births <sup>5</sup> . . . . .	13.0	23.6	6.0	18.4	27.5	10.9	15.1
Births to unmarried mothers . . . . .	39.8	68.1	12.3	69.3	52.3	27.1	53.2
Mothers born in the 50 states or District of Columbia . . . . .	77.2	98.5	23.8	81.7	37.1	93.3	54.5
Educational attainment of mother:							
High school diploma or higher . . . . .	88.8	81.7	94.9	88.8	79.0	93.8	77.8
Bachelor's degree or higher . . . . .	35.7	11.5	68.4	20.1	10.1	46.3	17.4
				Mean			
Age of mother at first birth . . . . .	27.4	24.2	31.4	25.8	25.2	28.2	25.7

<sup>1</sup>Race groups are single race. Race and Hispanic origin are reported separately on birth certificates. In this table, non-Hispanic women are classified by race. Race categories are consistent with 1997 Office of Management and Budget standards; see Technical Notes in this report. Single race is defined as only one race reported on the birth certificate.

<sup>2</sup>Includes births to race and origin groups not shown separately, such as Hispanic single-race Black, Hispanic single-race White, and non-Hispanic multiple-race women, as well as births with origin not stated.

<sup>3</sup>Includes all people of Hispanic origin of any race; see Technical Notes.

<sup>4</sup>Male births per 1,000 female births.

<sup>5</sup>Based on live-birth order.

SOURCE: National Center for Health Statistics, National Vital Statistics System, natality data file.

**Table 12. Selected demographic characteristics of births, by Hispanic origin of mother: United States, 2022**

[Mean age at first birth is the arithmetic average of the age of mothers at the time of birth, computed directly from the frequency of first births by age of mother]

Characteristic	Total <sup>1</sup>	Central and South American	Cuban	Dominican	Mexican	Puerto Rican	Other and unknown Hispanic
				Number			
Births . . . . .	937,421	207,843	26,390	33,531	510,194	69,266	90,197
				Ratio			
Sex ratio <sup>2</sup> . . . . .	1,038	1,041	1,043	1,027	1,038	1,042	1,030
				Percent			
Births to mothers younger than age 20 . . . . .	6.1	6.2	2.2	3.7	6.4	6.0	6.6
Quadruplet and higher-order births <sup>3</sup> . . . . .	15.1	13.7	5.4	8.5	16.9	13.4	14.6
Mothers born in the 50 states or District of Columbia . . . . .	54.5	19.6	41.5	31.6	64.7	72.4	76.3
Educational attainment of mother:							
High school diploma or higher . . . . .	77.8	62.8	92.7	87.1	80.1	87.9	83.6
Bachelor's degree or higher . . . . .	17.4	18.4	34.0	24.7	14.8	20.2	19.6
				Mean			
Age of mother at first birth . . . . .	25.7	26.2	28.5	26.8	25.1	25.7	25.8

<sup>1</sup>Includes origin not stated.<sup>2</sup>Male births per 1,000 female births.<sup>3</sup>Based on live-birth order.

NOTES: In this table, Hispanic women are classified by place of origin; non-Hispanic women are not shown. Other and unknown Hispanic includes origins not otherwise classified, including Spaniards. See Technical Notes in this report.

SOURCE: National Center for Health Statistics, National Vital Statistics System, natality data file.



**Table 13. Selected medical and health characteristics of births, by race and Hispanic origin of mother: United States, 2022**

Characteristic	Non-Hispanic, single race <sup>1</sup>						
	All races and origins <sup>2</sup>	American Indian and Alaska Native	Asian	Black	Native Hawaiian and Pacific Islander	White	Hispanic <sup>3</sup>
Percent							
Mother							
Prenatal care initiation:							
First trimester . . . . .	77.0	64.8	82.1	67.6	49.7	82.6	70.5
Late or no care . . . . .	6.8	12.6	4.5	10.0	22.4	4.7	9.1
Smoked during pregnancy . . . . .	3.7	11.0	0.3	3.1	2.1	5.4	1.0
Pregnancy resulted from infertility treatment . . . . .	2.4	0.5	5.0	1.0	0.7	3.3	1.0
Mother received WIC <sup>4</sup> food for herself during this pregnancy . . . . .	30.2	43.9	16.3	44.8	32.7	18.8	47.5
Diabetes:							
Prepregnancy (diagnosis before this pregnancy) . . . . .	1.2	2.9	1.4	1.6	2.3	0.9	1.3
Gestational (diagnosis during this pregnancy) . . . . .	8.1	12.7	15.8	6.5	11.2	7.3	8.6
Overweight or obese (BMI <sup>5</sup> of 25.0 or over) . . . . .	59.1	70.4	39.4	68.4	77.2	55.0	66.4
Induction of labor . . . . .	31.9	33.1	28.0	30.0	25.5	35.3	27.4
Certified nurse midwife delivery . . . . .	10.9	19.5	9.2	9.7	10.5	11.5	10.3
Home births . . . . .	1.5	1.0	0.4	0.8	0.8	2.2	0.6
Cesarean delivery (total) . . . . .	32.1	29.4	33.5	36.8	32.4	31.1	31.7
Low-risk <sup>6</sup> . . . . .	26.3	23.0	29.2	30.8	30.1	25.3	25.6
Source of payment for the delivery:							
Medicaid . . . . .	41.3	65.2	22.1	64.1	59.4	27.8	58.6
Private . . . . .	51.2	23.5	72.8	30.6	28.7	65.1	31.6
Self-pay . . . . .	4.1	1.8	2.1	2.2	6.1	3.7	6.6
Other <sup>7</sup> . . . . .	3.4	9.5	3.0	3.1	5.8	3.4	3.2
Infant was being breastfed at discharge <sup>8</sup> . . . . .	85.2	77.9	90.1	76.8	78.4	86.4	87.2
Infant							
Gestational age:							
Preterm <sup>9</sup> . . . . .	10.38	12.61	9.19	14.59	11.96	9.44	10.06
Early preterm <sup>10</sup> . . . . .	2.76	3.28	2.25	4.89	3.06	2.28	2.60
Late preterm <sup>11</sup> . . . . .	7.62	9.33	6.95	9.70	8.90	7.16	7.46
Birthweight <sup>12</sup> :							
Very low birthweight <sup>13</sup> . . . . .	1.36	1.50	1.14	2.89	1.46	1.01	1.24
Low birthweight <sup>14</sup> . . . . .	8.60	8.80	9.39	14.75	8.51	7.12	7.87
Twin births <sup>15</sup> . . . . .	31.2	26.5	23.6	41.4	22.9	32.6	24.5
Triplet and higher-order births <sup>16</sup> . . . . .	78.9	58.3	50.2	108.7	—	84.2	61.3

— Quantity zero.

<sup>1</sup>Race groups are single race. Race and Hispanic origin are reported separately on birth certificates. In this table, non-Hispanic women are classified by race. Race categories are consistent with 1997 Office of Management and Budget standards; see Technical Notes in this report. Single race is defined as only one race reported on the birth certificate.<sup>2</sup>Includes births to race and origin groups not shown separately, such as Hispanic single-race Black, Hispanic single-race White, and non-Hispanic multiple-race women, as well as births with origin not stated.<sup>3</sup>Includes all people of Hispanic origin of any race; see Technical Notes.<sup>4</sup>Special Supplemental Nutrition Program for Women, Infants, and Children.<sup>5</sup>Body mass index.<sup>6</sup>Rate is number of singleton, term (37 weeks of gestation or more based on the obstetric estimate), cephalic (head first), cesarean deliveries to women having a first birth per 100 women delivering singleton, term, cephalic births.<sup>7</sup>Includes Indian Health Service, CHAMPUS or TRICARE, other government (federal, state, or local), or charity.<sup>8</sup>Excludes data for California, which did not report if infant was being breastfed at discharge.<sup>9</sup>Born before 37 completed weeks of gestation, based on the obstetric estimate; see Technical Notes.<sup>10</sup>Born before 34 completed weeks of gestation, based on the obstetric estimate; see Technical Notes.<sup>11</sup>Born between 34 and 36 completed weeks of gestation, based on the obstetric estimate; see Technical Notes.<sup>12</sup>Equivalents of gram weights in pounds are shown in the User Guide; see reference 9 in this report.<sup>13</sup>Less than 1,500 grams (3 lb 4 oz).<sup>14</sup>Less than 2,500 grams (5 lb 8 oz).<sup>15</sup>Live births in twin deliveries per 1,000 live births.<sup>16</sup>Live births in triplet and other higher-order multiple deliveries per 100,000 live births.

SOURCE: National Center for Health Statistics, National Vital Statistics System, natality data file.

**Table 14. Selected medical and health characteristics of births, by Hispanic origin of mother: United States, 2022**

Characteristic	Total	Central and South American	Cuban	Dominican	Mexican	Puerto Rican	Other and unknown Hispanic
Mother							
Percent							
Prenatal care initiation:							
First trimester . . . . .	70.5	61.8	78.0	72.8	72.3	75.9	73.0
Late or no care . . . . .	9.1	12.8	6.8	8.0	8.3	6.4	8.2
Smoked during pregnancy . . . . .	1.0	0.3	1.1	0.5	0.9	3.1	1.5
Pregnancy resulted from infertility treatment . . . . .	1.0	0.9	1.7	1.5	0.8	1.6	1.2
Mother received WIC <sup>1</sup> food for herself during this pregnancy . . . . .	47.5	49.0	41.8	49.9	47.5	44.7	46.9
Diabetes:							
Prepregnancy (diagnosis before this pregnancy) . . . . .	1.3	1.0	0.8	1.1	1.5	1.5	1.3
Gestational (diagnosis during this pregnancy) . . . . .	8.6	7.4	7.1	8.4	9.2	8.3	8.4
Overweight or obese (BMI <sup>2</sup> of 25.0 or over) . . . . .	66.4	61.8	58.2	64.8	69.0	65.3	66.0
Induction of labor . . . . .	27.4	25.1	23.9	29.5	27.5	31.5	29.7
Certified nurse midwife delivery . . . . .	10.3	11.5	7.3	9.6	9.7	13.6	9.3
Home births . . . . .	0.6	0.5	0.8	0.5	0.5	0.9	0.7
Cesarean delivery (total) . . . . .	31.7	30.3	44.0	41.0	30.6	33.5	32.3
Low-risk <sup>3</sup> . . . . .	25.6	24.7	36.1	30.5	24.5	27.6	25.8
Source of payment for the delivery:							
Medicaid . . . . .	58.6	58.7	50.8	62.4	58.9	57.0	59.0
Private . . . . .	31.6	26.2	44.8	31.6	32.0	37.2	34.2
Self-pay . . . . .	6.6	12.0	2.3	2.7	6.1	1.4	3.3
Other <sup>4</sup> . . . . .	3.2	3.1	2.1	3.2	3.0	4.5	3.6
Infant was being breastfed at discharge <sup>5</sup> . . . . .	87.2	88.6	90.6	89.2	86.9	84.7	85.6
Infant							
Gestational age:							
Preterm <sup>6</sup> . . . . .	10.06	9.47	9.44	10.01	10.02	11.46	10.84
Early preterm <sup>7</sup> . . . . .	2.60	2.34	2.70	2.91	2.56	3.24	2.88
Late preterm <sup>8</sup> . . . . .	7.46	7.13	6.74	7.10	7.46	8.23	7.96
Birthweight <sup>9</sup> :							
Very low birthweight <sup>10</sup> . . . . .	1.24	1.08	1.38	1.60	1.20	1.67	1.37
Low birthweight <sup>11</sup> . . . . .	7.87	7.26	7.55	8.90	7.65	9.91	8.70
Twin births <sup>12</sup> . . . . .	24.5	20.6	26.9	29.5	24.6	30.4	26.1
Triplet and higher-order births <sup>13</sup> . . . . .	61.3	47.2	49.3	62.6	62.3	88.1	71.0

<sup>1</sup>Special Supplemental Nutrition Program for Women, Infants, and Children.  
<sup>2</sup>Body mass index.  
<sup>3</sup>Rate is number of singleton, term (37 weeks of gestation or more based on the obstetric estimate), cephalic (head first), cesarean deliveries to women having a first birth per 100 women delivering singleton, term, cephalic births.  
<sup>4</sup>Includes Indian Health Service, CHAMPUS or TRICARE, other government (federal, state, or local), or charity.  
<sup>5</sup>Excludes data for California, which did not report if infant was being breastfed at discharge.  
<sup>6</sup>Born before 37 completed weeks of gestation, based on the obstetric estimate; see Technical Notes in this report.  
<sup>7</sup>Born before 34 completed weeks of gestation, based on the obstetric estimate; see Technical Notes.  
<sup>8</sup>Born between 34 and 36 completed weeks of gestation, based on the obstetric estimate; see Technical Notes.  
<sup>9</sup>Equivalents of gram weights in pounds are shown in the User Guide; see reference 9 in this report.  
<sup>10</sup>Less than 1,500 grams (3 lb 4 oz).  
<sup>11</sup>Less than 2,500 grams (5 lb 8 oz).  
<sup>12</sup>Live births in twin deliveries per 1,000 live births.  
<sup>13</sup>Live births in triplet and other higher-order multiple deliveries per 100,000 live births.

NOTES: In this table, Hispanic women are classified only by place of origin; non-Hispanic women are not shown. Other and unknown Hispanic includes origins not otherwise classified, including Spaniards. See Technical Notes.

SOURCE: National Center for Health Statistics, National Vital Statistics System, natality data file.

**Table 15. Mothers who smoked for the 3 months before pregnancy and anytime during pregnancy, and those who quit before and during pregnancy, by age and race and Hispanic origin of mother: United States, 2022**

Race and Hispanic origin and tobacco use	All ages	Younger than 20	20–24	25–29	30–34	35–39	40–54
All races and origins <sup>1</sup>				Percent			
3 months before pregnancy . . . . .	4.6	3.8	5.7	5.1	4.3	3.8	3.5
Anytime during pregnancy . . . . .	3.7	3.0	4.4	4.0	3.4	3.1	2.9
First trimester . . . . .	3.6	2.9	4.3	3.9	3.4	3.0	2.8
Second trimester . . . . .	3.1	2.3	3.6	3.4	2.9	2.7	2.5
Third trimester . . . . .	2.9	2.1	3.4	3.2	2.8	2.6	2.4
Quit before pregnancy <sup>2</sup> . . . . .	22.3	24.9	24.7	22.7	21.1	20.1	19.4
Quit during pregnancy <sup>3</sup> . . . . .	19.7	28.1	23.2	19.6	18.0	16.4	17.8
Non-Hispanic, single race <sup>4</sup>							
Black:							
3 months before pregnancy . . . . .	3.9	1.4	2.8	4.1	5.0	4.2	3.6
Anytime during pregnancy . . . . .	3.1	1.1	2.1	3.3	4.1	3.5	3.0
First trimester . . . . .	3.1	1.1	2.1	3.2	3.9	3.4	2.9
Second trimester . . . . .	2.6	0.8	1.6	2.7	3.4	3.0	2.5
Third trimester . . . . .	2.4	0.7	1.5	2.5	3.1	2.9	2.4
Quit before pregnancy <sup>2</sup> . . . . .	22.1	24.8	27.1	22.8	20.7	19.0	19.6
Quit during pregnancy <sup>3</sup> . . . . .	23.5	34.0	29.3	24.8	22.1	18.4	19.8
White:							
3 months before pregnancy . . . . .	6.7	8.4	9.9	7.3	5.5	5.1	5.2
Anytime during pregnancy . . . . .	5.4	6.7	7.8	5.9	4.5	4.2	4.3
First trimester . . . . .	5.3	6.5	7.6	5.8	4.4	4.2	4.3
Second trimester . . . . .	4.6	5.3	6.5	5.1	3.9	3.7	3.8
Third trimester . . . . .	4.4	5.0	6.2	4.8	3.8	3.6	3.6
Quit before pregnancy <sup>2</sup> . . . . .	20.6	22.2	22.4	21.1	19.7	18.9	17.5
Quit during pregnancy <sup>3</sup> . . . . .	17.9	25.7	21.2	17.7	16.2	14.7	15.9
Hispanic <sup>5</sup>							
3 months before pregnancy . . . . .	1.4	1.0	1.5	1.5	1.5	1.4	1.2
Anytime during pregnancy . . . . .	1.0	0.6	0.9	1.0	1.1	1.0	0.8
First trimester . . . . .	0.9	0.6	0.9	0.9	1.0	1.0	0.8
Second trimester . . . . .	0.7	0.4	0.6	0.7	0.8	0.8	0.7
Third trimester . . . . .	0.7	0.4	0.6	0.7	0.8	0.7	0.6
Quit before pregnancy <sup>2</sup> . . . . .	35.9	40.8	40.4	37.3	33.1	30.7	29.4
Quit during pregnancy <sup>3</sup> . . . . .	29.4	38.6	33.2	29.7	26.7	26.5	27.9
All races and origins <sup>1</sup>				Number			
Total . . . . .	3,667,758	145,614	638,685	1,013,417	1,118,787	606,598	144,657
Not stated 3 months before pregnancy . . . . .	15,327	781	3,169	4,152	4,244	2,358	623
Not stated during pregnancy . . . . .	15,175	766	3,100	4,114	4,224	2,353	618
Quit before pregnancy <sup>2</sup> :							
Smoked before pregnancy . . . . .	168,693	5,541	36,166	51,439	47,614	22,902	5,031
Unknown if quit . . . . .	310	12	57	95	104	35	7
Quit during pregnancy <sup>3</sup> :							
Smoked before pregnancy . . . . .	134,141	4,309	28,011	40,624	38,374	18,676	4,147
Unknown if quit . . . . .	208	7	42	59	48	44	8
Non-Hispanic, single race <sup>4</sup>							
Black:							
Total . . . . .	511,439	29,676	110,822	142,234	133,896	73,610	21,201
Not stated 3 months before pregnancy . . . . .	2,113	99	465	583	602	290	74
Not stated during pregnancy . . . . .	2,102	100	457	576	604	292	73
Quit before pregnancy <sup>2</sup> :							
Smoked before pregnancy . . . . .	19,841	406	3,092	5,866	6,608	3,110	759
Unknown if quit . . . . .	35	2	1	10	19	3	–
Quit during pregnancy <sup>3</sup> :							
Smoked before pregnancy . . . . .	16,017	326	2,361	4,690	5,418	2,590	632
Unknown if quit . . . . .	36	–	4	11	11	8	2

See footnotes at end of table.

**Table 15. Mothers who smoked for the 3 months before pregnancy and anytime during pregnancy, and those who quit before and during pregnancy, by age and race and Hispanic origin of mother: United States, 2022—Con.**

Race and Hispanic origin and tobacco use	All ages	Younger than 20	20–24	25–29	30–34	35–39	40–54
Non-Hispanic, single race <sup>4</sup>		Number					
White:							
Total .....	1,840,739	48,467	276,137	515,204	615,589	318,572	66,770
Not stated 3 months before pregnancy .....	6,648	331	1,388	1,781	1,839	1,049	260
Not stated during pregnancy .....	6,553	320	1,348	1,754	1,827	1,047	257
Quit before pregnancy <sup>2</sup> :							
Smoked before pregnancy .....	122,574	4,042	27,089	37,708	34,004	16,297	3,434
Unknown if quit .....	160	2	35	46	49	24	4
Quit during pregnancy <sup>3</sup> :							
Smoked before pregnancy .....	99,101	3,231	21,528	30,264	27,762	13,429	2,887
Unknown if quit .....	107	5	25	31	21	20	5
Hispanic <sup>5</sup>							
Total .....	937,421	57,362	206,948	270,357	237,703	129,675	35,376
Not stated 3 months before pregnancy .....	3,028	214	727	831	768	379	109
Not stated during pregnancy .....	2,996	210	725	824	754	377	106
Quit before pregnancy <sup>2</sup> :							
Smoked before pregnancy .....	13,450	551	3,038	4,027	3,641	1,787	406
Unknown if quit .....	51	4	13	17	14	2	1
Quit during pregnancy <sup>3</sup> :							
Smoked before pregnancy .....	9,001	343	1,884	2,649	2,536	1,290	299
Unknown if quit .....	25	1	6	5	4	8	1

– Quantity zero.  
<sup>1</sup>Includes births to race and origin groups not shown separately, such as Hispanic single-race Black, Hispanic single-race White, and non-Hispanic multiple-race women, as well as births with origin not stated.  
<sup>2</sup>Births to women not reporting smoking during pregnancy per 100 women who smoked in the 3 months before pregnancy; see Technical Notes in this report.  
<sup>3</sup>Births to women not reporting smoking in the third trimester of pregnancy per 100 women who smoked in either the first or second trimester; see Technical Notes.  
<sup>4</sup>Race groups are single race. Race and Hispanic origin are reported separately on birth certificates. In this table, non-Hispanic women are classified by race. Race categories are consistent with 1997 Office of Management and Budget standards; see Technical Notes. Single race is defined as only one race reported on the birth certificate.  
<sup>5</sup>Includes all people of Hispanic origin of any race; see Technical Notes.

SOURCE: National Center for Health Statistics, National Vital Statistics System, natality data file.

**Table 16. Trimester prenatal care began, by age and race and Hispanic origin of mother: United States, 2022**

Race and Hispanic origin of mother and trimester care began	All ages	Younger than 20	20–24	25–29	30–34	35–39	40–54
<b>All races and origins<sup>1</sup></b>				<b>Percent</b>			
First trimester . . . . .	77.0	59.1	70.6	77.1	80.9	80.4	76.8
Second trimester . . . . .	16.3	26.8	20.3	16.2	13.7	14.2	16.9
Late or no care . . . . .	6.8	14.1	9.1	6.6	5.4	5.4	6.3
Third trimester . . . . .	4.6	9.6	6.2	4.5	3.6	3.7	4.3
No care . . . . .	2.2	4.6	2.8	2.1	1.7	1.7	2.0
				<b>Number</b>			
Total . . . . .	3,667,758	145,614	638,685	1,013,417	1,118,787	606,598	144,657
Not stated . . . . .	79,212	3,900	15,176	21,439	22,684	12,774	3,239
<b>Non-Hispanic, single race<sup>2</sup></b>				<b>Percent</b>			
<b>Black:</b>							
First trimester . . . . .	67.6	55.0	64.9	68.0	70.2	70.7	69.1
Second trimester . . . . .	22.4	29.6	24.1	22.0	20.7	20.6	22.0
Late or no care . . . . .	10.0	15.3	11.0	9.9	9.1	8.7	8.9
Third trimester . . . . .	6.3	9.7	6.8	6.2	5.7	5.7	5.8
No care . . . . .	3.7	5.6	4.2	3.7	3.3	3.0	3.1
				<b>Number</b>			
Total . . . . .	511,439	29,676	110,822	142,234	133,896	73,610	21,201
Not stated . . . . .	13,972	862	3,163	3,880	3,614	1,897	556
<b>White:</b>							
				<b>Percent</b>			
First trimester . . . . .	82.6	68.1	76.8	82.6	85.4	84.6	81.3
Second trimester . . . . .	12.7	22.4	16.8	12.7	10.7	11.2	13.6
Late or no care . . . . .	4.7	9.5	6.5	4.6	3.9	4.1	5.2
Third trimester . . . . .	3.3	6.7	4.7	3.2	2.7	2.8	3.5
No care . . . . .	1.4	2.8	1.8	1.4	1.2	1.3	1.7
				<b>Number</b>			
Total . . . . .	1,840,739	48,467	276,137	515,204	615,589	318,572	66,770
Not stated . . . . .	30,294	885	4,818	7,992	9,819	5,543	1,237
<b>Hispanic<sup>3</sup></b>				<b>Percent</b>			
First trimester . . . . .	70.5	53.5	66.1	72.0	74.9	73.8	70.6
Second trimester . . . . .	20.4	29.0	22.8	19.6	17.8	19.0	21.7
Late or no care . . . . .	9.1	17.5	11.1	8.4	7.3	7.2	7.6
Third trimester . . . . .	6.3	11.8	7.7	5.9	5.0	5.1	5.4
No care . . . . .	2.8	5.6	3.5	2.5	2.2	2.1	2.3
				<b>Number</b>			
Total . . . . .	937,421	57,362	206,948	270,357	237,703	129,675	35,376
Not stated . . . . .	24,046	1,835	5,659	6,828	5,795	3,092	837

<sup>1</sup>Includes births to race and origin groups not shown separately, such as Hispanic single-race Black, Hispanic single-race White, and non-Hispanic multiple-race women, as well as births with origin not stated.

<sup>2</sup>Race groups are single race. Race and Hispanic origin are reported separately on birth certificates. In this table, non-Hispanic women are classified by race. Race categories are consistent with 1997 Office of Management and Budget standards; see Technical Notes in this report. Single race is defined as only one race reported on the birth certificate.

<sup>3</sup>Includes all people of Hispanic origin of any race; see Technical Notes.

SOURCE: National Center for Health Statistics, National Vital Statistics System, natality data file.

**Table 17. Births, by method of delivery: United States, 2010–2022, and by race and Hispanic origin of mother: United States, 2016–2022**

Race and Hispanic origin and year	Vaginal			Cesarean			Cesarean			Vaginal birth after previous cesarean delivery <sup>7</sup>	
	All births	Total <sup>1</sup>	After previous cesarean	Total <sup>2</sup>	Primary	Low-risk <sup>3</sup>	Not stated	Total <sup>4</sup>	Primary <sup>5</sup>		Low-risk <sup>6</sup>
All races and origins <sup>8</sup>	Number						Percent				
2022.....	3,667,758	2,486,963	82,284	1,178,066	696,495	320,490	2,729	32.1	22.5	26.3	14.6
2021.....	3,664,292	2,486,856	79,555	1,174,545	691,550	316,349	2,891	32.1	22.3	26.3	14.2
2020.....	3,613,647	2,462,904	77,776	1,148,692	666,599	310,303	2,051	31.8	21.9	25.9	13.9
2019.....	3,747,540	2,558,882	80,140	1,186,397	683,900	314,016	2,261	31.7	21.6	25.6	13.8
2018.....	3,791,712	2,581,992	78,842	1,208,176	693,276	319,022	1,544	31.9	21.7	25.9	13.3
2017.....	3,855,500	2,621,010	76,301	1,232,339	710,963	325,086	2,151	32.0	21.9	26.0	12.8
2016.....	3,945,875	2,684,803	75,244	1,258,581	728,500	329,614	2,491	31.9	21.8	25.7	12.4
2015.....	3,978,497	2,703,504	---	1,272,503	---	331,982	2,490	32.0	---	25.8	---
2014.....	3,988,076	2,699,951	---	1,284,551	---	337,086	3,574	32.2	---	26.0	---
2013.....	3,932,181	2,642,892	---	1,284,339	---	344,405	4,950	32.7	---	26.8	---
2012.....	3,952,841	2,650,744	---	1,296,070	---	355,942	6,027	32.8	---	27.2	---
2011.....	3,953,590	2,651,428	---	1,293,267	---	359,669	8,895	32.8	---	27.2	---
2010.....	3,999,386	2,680,947	---	1,309,182	---	368,523	9,257	32.8	---	27.5	---
Non-Hispanic, single race <sup>9</sup>											
Black:											
2022.....	511,439	323,076	13,430	188,132	109,189	46,477	231	36.8	26.1	30.8	14.6
2021.....	517,889	327,049	12,687	190,500	111,166	47,977	340	36.8	26.2	31.2	13.8
2020.....	529,811	337,264	12,911	192,338	110,612	48,448	209	36.3	25.5	30.6	13.7
2019.....	548,075	351,191	13,159	196,672	113,001	48,481	212	35.9	25.1	30.0	13.6
2018.....	552,029	352,750	12,702	199,117	114,150	49,481	162	36.1	25.2	30.3	13.0
2017.....	560,715	358,467	12,457	201,991	117,054	50,217	257	36.0	25.3	30.4	12.8
2016.....	558,622	357,859	11,763	200,460	117,410	50,287	303	35.9	25.4	30.3	12.4
White:											
2022.....	1,840,739	1,268,223	38,353	571,371	347,632	160,403	1,145	31.1	22.1	25.3	14.7
2021.....	1,887,656	1,301,124	38,908	585,346	353,971	161,487	1,186	31.0	21.9	25.2	14.4
2020.....	1,843,432	1,275,917	36,967	566,811	339,770	157,635	704	30.8	21.5	24.9	14.0
2019.....	1,915,912	1,327,934	38,442	587,111	348,616	160,622	867	30.7	21.3	24.7	13.9
2018.....	1,956,413	1,353,424	38,345	602,361	356,796	164,087	628	30.8	21.4	24.9	13.5
2017.....	1,992,461	1,375,702	37,295	615,830	366,505	167,434	929	30.9	21.5	24.9	13.0
2016.....	2,056,332	1,419,788	37,442	635,588	379,240	172,006	956	30.9	21.5	24.7	12.8

See footnotes at end of table.

**Table 17. Births, by method of delivery: United States, 2010–2022, and by race and Hispanic origin of mother: United States, 2016–2022—Con.**

Race and Hispanic origin and year	All births	Vaginal		Cesarean				Cesarean			Vaginal birth after previous cesarean delivery <sup>7</sup>
		Total <sup>1</sup>	After previous cesarean	Total <sup>2</sup>	Primary	Low-risk <sup>3</sup>	Not stated	Total <sup>4</sup>	Primary <sup>5</sup>	Low-risk <sup>6</sup>	
Hispanic <sup>10</sup>	Number							Percent			
2022.....	937,421	640,248	21,880	296,706	165,122	75,640	467	31.7	21.1	25.6	14.3
2021.....	885,916	605,819	19,485	279,607	154,162	70,443	490	31.6	20.8	25.5	13.5
2020.....	866,713	594,463	19,469	271,865	145,786	67,517	385	31.4	20.2	25.1	13.4
2019.....	886,467	608,445	19,612	277,578	147,597	66,705	444	31.3	20.1	24.8	13.1
2018.....	886,210	605,674	19,371	280,386	147,149	67,040	150	31.6	20.1	25.4	12.7
2017.....	898,764	613,101	18,423	285,379	150,592	67,860	284	31.8	20.2	25.6	12.0
2016.....	918,447	627,095	17,847	290,832	153,462	67,278	520	31.7	20.1	25.1	11.5

--- Comparable data not available for the 50 states and District of Columbia for 2010–2015 because not all reporting areas had adopted the 2003 U.S. Certificate of Live Birth.

<sup>1</sup>Includes unknown type of vaginal delivery; see Technical Notes in this report.

<sup>2</sup>Includes unknown type of cesarean delivery; see Technical Notes.

<sup>3</sup>Singleton, term (37 completed weeks of gestation or more based on the obstetric estimate), cephalic (head first), cesarean deliveries to women having a first birth.

<sup>4</sup>Percentage of all live births delivered by cesarean.

<sup>5</sup>Rate is number of births to women having a cesarean delivery per 100 births to women without a previous cesarean.

<sup>6</sup>Rate is number of singleton, term (37 completed weeks of gestation or more based on the obstetric estimate), cephalic, cesarean deliveries to women having a first birth per 100 women delivering singleton, term, cephalic, first births.

<sup>7</sup>Rate is number of births to women having a vaginal delivery per 100 births to women with a previous cesarean delivery.

<sup>8</sup>Includes births to race and origin groups not shown separately, such as Hispanic single-race Black, Hispanic single-race White, and non-Hispanic multiple-race women, as well as births with origin not stated.

<sup>9</sup>Race groups are single race. Race and Hispanic origin are reported separately on birth certificates. In this table, non-Hispanic women are classified by race. Race categories are consistent with 1997 Office of Management and Budget standards; see Technical Notes. Single race is defined as only one race reported on the birth certificate.

<sup>10</sup>Includes all people of Hispanic origin of any race; see Technical Notes.

SOURCE: National Center for Health Statistics, National Vital Statistics System, natality data file.

**Table 18. Births, by method of delivery and by age and race and Hispanic origin of mother: United States, 2022**

Race and Hispanic origin and age of mother	Vaginal			Cesarean			Cesarean			Vaginal birth after previous cesarean delivery <sup>7</sup>	
	All births	Total <sup>1</sup>	After previous cesarean	Total <sup>2</sup>	Primary	Low-risk <sup>3</sup>	Not stated	Total <sup>4</sup>	Primary <sup>5</sup>		Low-risk <sup>6</sup>
All races and origins <sup>8</sup>	Number						Percent				
All ages	3,667,758	2,486,963	82,284	1,178,066	696,495	320,490	2,729	32.1	22.5	26.3	14.6
Younger than 20	145,614	117,993	420	27,541	25,083	16,574	80	18.9	17.6	15.1	14.9
20-24	638,685	479,145	7,818	158,987	114,602	65,931	553	24.9	19.6	20.9	15.0
25-29	1,013,417	711,850	21,434	300,841	184,525	89,726	726	29.7	21.1	25.7	15.6
30-34	1,118,787	738,485	29,749	379,540	211,875	89,720	762	33.9	23.0	29.9	15.1
35-39	606,598	363,893	18,639	242,230	123,655	45,616	475	40.0	26.4	38.9	13.6
40-54	144,657	75,597	4,224	68,927	36,755	12,923	133	47.7	34.0	52.8	11.6
Non-Hispanic, single race <sup>9</sup>											
Black:											
All ages	511,439	323,076	13,430	188,132	109,189	46,477	231	36.8	26.1	30.8	14.6
Younger than 20	29,676	23,151	92	6,517	5,938	3,913	8	22.0	20.5	18.1	14.0
20-24	110,822	78,910	1,616	31,870	23,165	13,333	42	28.8	23.1	25.2	15.7
25-29	142,234	92,333	3,806	49,824	28,834	12,845	77	35.0	24.6	33.2	15.4
30-34	133,896	79,706	4,611	54,132	27,896	9,584	58	40.4	27.1	39.5	15.0
35-39	73,610	39,372	2,670	34,207	17,066	5,056	31	46.5	31.8	48.8	13.5
40-54	21,201	9,604	635	11,582	6,290	1,746	15	54.7	41.3	61.5	10.7
White:											
All ages	1,840,739	1,268,223	38,353	571,371	347,632	160,403	1,145	31.1	22.1	25.3	14.7
Younger than 20	48,467	39,076	94	9,368	8,604	5,518	23	19.3	18.1	14.9	11.2
20-24	276,137	209,303	2,704	66,614	48,758	27,089	220	24.1	19.1	19.3	13.2
25-29	515,204	369,026	9,200	145,894	94,753	46,476	284	28.3	20.9	23.7	15.3
30-34	615,589	417,019	14,938	198,217	115,765	50,236	353	32.2	22.4	28.0	15.4
35-39	318,572	197,383	9,369	120,976	63,337	24,554	213	38.0	25.2	36.6	14.0
40-54	66,770	36,416	2,048	30,302	16,415	6,530	52	45.4	32.4	50.2	12.9
Hispanic <sup>10</sup>											
All ages	937,421	640,248	21,880	296,706	165,122	75,640	467	31.7	21.1	25.6	14.3
Younger than 20	57,362	47,507	204	9,815	8,847	5,998	40	17.1	15.8	13.8	17.7
20-24	206,948	156,981	2,907	49,861	34,938	20,981	106	24.1	18.5	20.8	16.4
25-29	270,357	189,042	6,657	81,187	45,061	21,660	128	30.0	19.8	27.4	15.6
30-34	237,703	152,671	6,951	84,919	42,259	16,519	113	35.7	22.5	33.5	14.0
35-39	129,675	75,556	4,155	54,053	25,557	8,181	66	41.7	26.4	42.8	12.7
40-54	35,376	18,491	1,006	16,871	8,460	2,301	14	47.7	32.6	54.7	10.7

<sup>1</sup>Includes unknown type of vaginal delivery; see Technical Notes in this report.

<sup>2</sup>Includes unknown type of cesarean delivery; see Technical Notes.

<sup>3</sup>Singleton, term (37 completed weeks of gestation or more based on the obstetric estimate), cephalic (head first), cesarean deliveries to women having a first birth.

<sup>4</sup>Percentage of all live births delivered by cesarean.

<sup>5</sup>Rate is the number of births to women having a cesarean delivery per 100 births to women without a previous cesarean.

<sup>6</sup>Rate is the number of singleton, term (37 completed weeks of gestation or more based on the obstetric estimate), cephalic, cesarean deliveries to women having a first birth per 100 women delivering singleton, term, cephalic, first births.

<sup>7</sup>Rate is the number of births to women having a vaginal delivery per 100 births to women with a previous cesarean delivery.

<sup>8</sup>Includes births to race and origin groups not shown separately, such as Hispanic single-race Black, Hispanic single-race White, and non-Hispanic multiple-race women, as well as births with origin not stated.

<sup>9</sup>Race groups are single race. Race and Hispanic origin are reported separately on birth certificates. In this table, non-Hispanic women are classified by race. Race categories are consistent with 1997 Office of Management and Budget standards; see Technical Notes. Single race is defined as only one race reported on the birth certificate.

<sup>10</sup>Includes all people of Hispanic origin of any race; see Technical Notes.

SOURCE: National Center for Health Statistics, National Vital Statistics System, natality data file.



**Table 19. Principal source of payment for the delivery, by age and race and Hispanic origin of mother: United States, 2022**

[Percentages are number of live births with specified source of payment per 100 live births in specified group]

Race and Hispanic origin of mother and source of payment	All ages	Younger than 20	20–24	25–29	30–34	35–39	40–54
<b>All races and origins<sup>1</sup></b>				Percent			
Total . . . . .	100.0	100.0	100.0	100.0	100.0	100.0	100.0
Medicaid . . . . .	41.3	78.9	63.3	44.2	30.3	27.4	30.1
Private insurance . . . . .	51.2	14.7	28.4	47.8	62.8	65.6	62.0
Self-pay . . . . .	4.1	3.9	4.1	4.2	3.8	4.2	5.1
Other <sup>2</sup> . . . . .	3.4	2.5	4.2	3.8	3.1	2.8	2.7
				Number			
Total . . . . .	3,667,758	145,614	638,685	1,013,417	1,118,787	606,598	144,657
Not stated . . . . .	32,707	1,196	6,545	9,649	9,251	4,841	1,225
<b>Non-Hispanic, single race<sup>3</sup></b>							
<b>Black:</b>				Percent			
Total . . . . .	100.0	100.0	100.0	100.0	100.0	100.0	100.0
Medicaid . . . . .	64.1	85.2	76.1	67.7	57.4	48.6	43.7
Private insurance . . . . .	30.6	11.8	19.2	26.7	37.0	45.6	50.2
Self-pay . . . . .	2.2	1.4	1.6	2.2	2.4	2.8	3.2
Other <sup>2</sup> . . . . .	3.1	1.7	3.1	3.4	3.1	3.0	2.9
				Number			
Total . . . . .	511,439	29,676	110,822	142,234	133,896	73,610	21,201
Not stated . . . . .	3,885	174	848	1,131	1,020	564	148
<b>White:</b>				Percent			
Total . . . . .	100.0	100.0	100.0	100.0	100.0	100.0	100.0
Medicaid . . . . .	27.8	73.2	52.0	30.2	18.3	16.3	18.2
Private insurance . . . . .	65.1	22.0	39.6	62.0	75.3	77.3	74.4
Self-pay . . . . .	3.7	2.0	3.8	3.9	3.4	3.7	4.7
Other <sup>2</sup> . . . . .	3.4	2.8	4.6	3.9	3.0	2.7	2.7
				Number			
Total . . . . .	1,840,739	48,467	276,137	515,204	615,589	318,572	66,770
Not stated . . . . .	16,672	431	2,990	5,018	5,122	2,545	566
<b>Hispanic<sup>4</sup></b>				Percent			
Total . . . . .	100.0	100.0	100.0	100.0	100.0	100.0	100.0
Medicaid . . . . .	58.6	80.5	71.2	58.9	49.4	47.6	50.1
Private insurance . . . . .	31.6	9.8	18.8	31.5	41.2	42.5	39.0
Self-pay . . . . .	6.6	7.2	6.3	6.3	6.5	7.2	8.4
Other <sup>2</sup> . . . . .	3.2	2.5	3.8	3.4	2.9	2.7	2.5
				Number			
Total . . . . .	937,421	57,362	206,948	270,357	237,703	129,675	35,376
Not stated . . . . .	7,639	464	1,945	2,303	1,739	925	263

<sup>1</sup>Includes births to race and origin groups not shown separately, such as Hispanic single-race Black, Hispanic single-race White, and non-Hispanic multiple-race women, as well as births with origin not stated.<sup>2</sup>Includes Indian Health Service, CHAMPUS or TRICARE, other government (federal, state, or local), or charity.<sup>3</sup>Race groups are single race. Race and Hispanic origin are reported separately on birth certificates. In this table, non-Hispanic women are classified by race. Race categories are consistent with 1997 Office of Management and Budget standards; see Technical Notes in this report. Single race is defined as only one race reported on the birth certificate.<sup>4</sup>Includes all people of Hispanic origin of any race.

SOURCE: National Center for Health Statistics, National Vital Statistics System, natality data file.

**Table 20. Births, by gestational age in weeks: United States, 2010–2022, and by race and Hispanic origin of mother: United States, 2016–2022**

Race and Hispanic origin of mother and year	Preterm <sup>1</sup>												Term <sup>1</sup>				Post term <sup>1</sup>	
	All births	Total under 37	Total under 34	Early				Late	Total 37–41	Early 37–38	Full 39–40	Late 41	42 and over	Not stated				
				Under 28	28–31	32–33	34–36											
All races and origins <sup>2</sup>	Number							Percent							Number			
2022.....	3,667,758	10.38	2.76	0.64	0.92	1.20	7.62	89.36	29.31	55.32	4.73	0.26	2,671					
2021.....	3,664,292	10.49	2.81	0.64	0.95	1.22	7.67	89.27	28.76	55.90	4.61	0.25	2,992					
2020.....	3,613,647	10.09	2.70	0.64	0.90	1.15	7.40	89.66	27.78	57.00	4.88	0.25	2,478					
2019.....	3,747,540	10.23	2.77	0.66	0.93	1.18	7.46	89.52	27.31	57.02	5.19	0.25	2,406					
2018.....	3,791,712	10.02	2.75	0.66	0.91	1.18	7.28	89.68	26.53	57.24	5.90	0.30	2,507					
2017.....	3,855,500	9.93	2.76	0.67	0.92	1.17	7.17	89.74	26.00	57.49	6.25	0.33	2,759					
2016.....	3,945,875	9.85	2.76	0.68	0.92	1.17	7.09	89.80	25.47	57.94	6.38	0.35	3,454					
2015.....	3,978,497	9.63	2.76	0.68	0.91	1.17	6.87	89.98	24.99	58.47	6.51	0.40	2,926					
2014.....	3,988,076	9.57	2.75	0.69	0.91	1.15	6.82	90.43	24.76	58.72	6.53	0.42	3,246					
2013.....	3,932,181	9.62	2.79	0.70	0.92	1.17	6.83	90.38	24.81	58.85	6.31	0.41	7,467					
2012.....	3,952,841	9.76	2.80	0.71	0.92	1.17	6.96	90.24	25.47	58.30	6.06	0.40	8,380					
2011.....	3,953,590	9.81	2.81	0.70	0.93	1.18	6.99	90.19	26.09	57.51	6.16	0.43	9,290					
2010.....	3,999,386	9.98	2.84	0.71	0.94	1.18	7.15	90.01	27.29	56.08	6.19	0.46	10,538					
Non-Hispanic, single race <sup>3</sup>																		
Black:																		
2022.....	511,439	14.59	4.89	1.47	1.56	1.86	9.70	85.18	32.73	48.81	3.65	0.23	326					
2021.....	517,889	14.75	4.95	1.44	1.67	1.85	9.80	85.04	32.27	49.28	3.49	0.21	391					
2020.....	529,811	14.36	4.82	1.47	1.58	1.77	9.54	85.43	31.22	50.47	3.74	0.21	300					
2019.....	548,075	14.39	4.94	1.52	1.63	1.79	9.45	85.39	30.40	50.93	4.06	0.21	326					
2018.....	552,029	14.13	4.90	1.51	1.60	1.79	9.23	85.62	29.64	51.34	4.64	0.25	384					
2017.....	560,715	13.93	4.87	1.53	1.62	1.72	9.06	85.79	28.93	51.90	4.96	0.28	445					
2016.....	558,622	13.77	4.93	1.56	1.61	1.75	8.84	85.94	28.48	52.42	5.04	0.30	506					
White:																		
2022.....	1,840,739	9.44	2.28	0.43	0.76	1.08	7.16	90.24	27.68	57.25	5.31	0.32	1,011					
2021.....	1,887,656	9.50	2.31	0.44	0.77	1.10	7.18	90.19	27.04	57.93	5.23	0.31	1,215					
2020.....	1,843,432	9.10	2.21	0.44	0.74	1.03	6.90	90.58	25.98	59.08	5.53	0.32	1,001					
2019.....	1,915,912	9.26	2.27	0.44	0.77	1.06	6.99	90.42	25.56	59.01	5.84	0.32	924					
2018.....	1,956,413	9.09	2.26	0.44	0.76	1.07	6.83	90.53	24.68	59.16	6.70	0.37	924					
2017.....	1,992,461	9.05	2.30	0.46	0.77	1.06	6.76	90.54	24.16	59.27	7.11	0.40	1,051					
2016.....	2,056,332	9.04	2.33	0.48	0.78	1.07	6.72	90.53	23.64	59.61	7.28	0.43	1,409					
Hispanic <sup>4</sup>																		
2022.....	937,421	10.06	2.60	0.60	0.88	1.12	7.46	89.77	30.10	55.24	4.42	0.17	421					
2021.....	885,916	10.23	2.67	0.63	0.91	1.14	7.57	89.62	29.83	55.62	4.17	0.15	496					
2020.....	866,713	9.84	2.52	0.60	0.84	1.07	7.32	90.01	29.00	56.61	4.41	0.15	348					
2019.....	886,467	9.97	2.61	0.63	0.87	1.11	7.36	89.87	28.66	56.52	4.68	0.16	344					
2018.....	886,210	9.73	2.56	0.62	0.84	1.09	7.17	90.07	28.05	56.83	5.19	0.20	382					
2017.....	898,764	9.62	2.56	0.62	0.85	1.09	7.05	90.16	27.58	57.15	5.43	0.23	455					
2016.....	918,447	9.45	2.98	0.62	0.84	1.08	6.92	90.30	27.02	57.85	5.43	0.25	676					

See footnotes at end of table.

**Table 20. Births, by gestational age in weeks: United States, 2010–2022, and by race and Hispanic origin of mother: United States, 2016–2022—Con.**

Race and Hispanic origin of mother and year	Preterm <sup>1</sup>							Term <sup>1</sup>				Post term <sup>1</sup>	
	All births	Total under 37	Total under 34	Early			Late	Total 37–41	Early 37–38	Full 39–40	Late 41	42 and over	Not stated
				Under 28	28–31	32–33	34–36						
All races and origins <sup>2</sup>								Number					
2022.....	3,667,758	380,548	101,167	23,369	33,663	44,135	279,381	3,275,078	1,074,082	2,027,670	173,326	9,461	2,671
2021.....	3,664,292	383,979	103,004	23,527	34,731	44,746	280,975	3,268,342	1,052,935	2,046,786	168,621	8,979	2,992
2020.....	3,613,647	364,487	97,420	23,286	32,463	41,671	267,067	3,237,819	1,003,260	2,058,396	176,163	8,863	2,478
2019.....	3,747,540	383,061	103,759	24,758	34,748	44,253	279,302	3,352,638	1,022,874	2,135,518	194,246	9,435	2,406
2018.....	3,791,712	379,777	104,031	24,945	34,386	44,700	275,746	3,398,110	1,005,405	2,169,016	223,689	11,318	2,507
2017.....	3,855,500	382,726	106,417	25,913	35,476	45,028	276,309	3,457,455	1,001,601	2,214,983	240,871	12,560	2,759
2016.....	3,945,875	388,218	108,836	26,618	36,239	45,979	279,382	3,540,290	1,004,224	2,284,399	251,667	13,913	3,454
2015.....	3,978,497	382,786	109,660	26,996	36,149	46,515	273,126	3,577,072	993,599	2,324,474	258,999	15,713	2,926
2014.....	3,988,076	381,321	109,474	27,320	36,245	45,909	271,847	3,586,933	986,745	2,339,796	260,392	19,822	3,246
2013.....	3,932,181	377,655	109,435	27,550	36,096	45,789	268,220	3,283,457	973,569	2,309,888	247,476	16,126	7,467
2012.....	3,952,841	385,082	110,444	28,004	36,366	46,074	274,638	3,304,365	1,004,750	2,299,615	239,148	15,866	8,380
2011.....	3,953,590	386,855	111,002	27,737	36,755	46,507	275,853	3,297,649	1,029,157	2,268,492	242,999	16,797	9,290
2010.....	3,999,386	398,402	113,131	28,437	37,435	47,259	285,271	3,325,476	1,088,564	2,236,912	246,768	18,413	10,538
<b>Non-Hispanic, single race<sup>3</sup></b>													
<b>Black:</b>													
2022.....	511,439	74,553	24,986	7,496	7,984	9,506	49,567	435,385	167,263	249,451	18,671	1,175	326
2021.....	517,889	76,334	25,641	7,445	8,640	9,556	50,693	440,079	167,006	255,016	18,057	1,085	391
2020.....	529,811	76,059	25,537	7,802	8,381	9,354	50,522	452,357	165,321	267,237	19,799	1,095	300
2019.....	548,075	78,829	27,063	8,332	8,927	9,804	51,766	467,745	166,528	278,956	22,261	1,175	326
2018.....	552,029	77,939	27,008	8,348	8,804	9,856	50,931	472,316	163,530	283,202	25,584	1,390	384
2017.....	560,715	78,024	27,274	8,548	9,070	9,656	50,750	480,661	162,072	290,803	27,786	1,585	445
2016.....	558,622	76,834	27,501	8,729	8,987	9,785	49,333	479,630	158,937	292,539	28,154	1,652	506
<b>White:</b>													
2022.....	1,840,739	173,638	41,902	7,968	14,062	19,872	131,736	1,660,116	509,163	1,053,269	97,684	5,974	1,011
2021.....	1,887,656	179,123	43,671	8,223	14,603	20,845	135,452	1,701,379	510,021	1,092,775	98,583	5,939	1,215
2020.....	1,843,432	167,679	40,638	8,043	13,681	18,914	127,041	1,668,915	478,611	1,088,456	101,848	5,837	1,001
2019.....	1,915,912	177,339	43,532	8,487	14,735	20,310	133,807	1,731,535	489,542	1,130,124	111,869	6,114	924
2018.....	1,956,413	177,842	44,287	8,665	14,764	20,858	133,555	1,770,366	482,550	1,156,775	131,041	7,281	924
2017.....	1,992,461	180,322	45,761	9,200	15,429	21,132	134,561	1,803,063	481,048	1,180,394	141,621	8,025	1,051
2016.....	2,056,332	185,854	47,823	9,766	16,101	21,956	138,031	1,860,243	485,846	1,224,872	149,525	8,826	1,409
<b>Hispanic<sup>4</sup></b>													
2022.....	937,421	94,306	24,408	5,653	8,289	10,466	69,898	841,129	282,083	517,597	41,449	1,565	421
2021.....	885,916	90,613	23,620	5,534	8,021	10,065	66,993	793,509	264,132	492,466	36,911	1,298	496
2020.....	866,713	85,224	21,790	5,241	7,273	9,276	63,434	779,828	251,210	490,413	38,205	1,313	348
2019.....	886,467	88,354	23,116	5,620	7,699	9,797	65,238	796,333	253,964	500,856	41,513	1,436	344
2018.....	886,210	86,186	22,637	5,490	7,467	9,680	63,549	797,905	248,463	503,429	46,013	1,737	382
2017.....	898,764	86,393	23,025	5,605	7,635	9,785	63,368	809,882	247,788	513,342	48,752	2,034	455
2016.....	918,447	86,691	23,195	5,649	7,665	9,881	63,496	828,783	247,999	530,951	49,833	2,297	676

<sup>1</sup>Completed weeks based on the obstetric estimate of gestation; see Technical Notes in this report.

<sup>2</sup>Includes births to race and origin groups not shown separately, such as Hispanic single-race Black, Hispanic single-race White, and non-Hispanic multiple-race women, as well as births with origin not stated.

<sup>3</sup>Race groups are single race. Race and Hispanic origin are reported separately on birth certificates. In this table, non-Hispanic women are classified by race. Race categories are consistent with 1997 Office of Management and Budget standards; see Technical Notes. Single race is defined as only one race reported on the birth certificate.

<sup>4</sup>Includes all people of Hispanic origin of any race; see Technical Notes.

SOURCE: National Center for Health Statistics, National Vital Statistics System, natality data file.

**Table 21. Births, by gestational age in weeks, and age and race and Hispanic origin of mother: United States, 2022**

Race and Hispanic origin and age of mother	All births	Preterm <sup>1</sup>					Term <sup>1</sup>				Post term <sup>1</sup>	
		Total under 37	Early			Late	Total 37–41	Early 37–38	Full 39–40	Late 41	42 and over	Not stated
			Under 28	28–31	32–33	34–36						
All races and origins <sup>2</sup>	Number	Percent										Number
All ages	3,667,758	10.38	0.64	0.92	1.20	7.62	89.36	29.31	55.32	4.73	0.26	2,671
Younger than 15	1,825	16.46	1.54	1.93	2.42	10.57	83.31	32.27	47.14	3.91	0.22	9
15–19	143,789	10.68	0.88	1.07	1.24	7.50	89.13	29.14	55.05	4.94	0.19	169
20–24	638,685	9.90	0.69	0.88	1.14	7.19	89.86	29.01	55.95	4.90	0.24	552
25–29	1,013,417	9.72	0.59	0.84	1.11	7.17	90.02	28.71	56.29	5.02	0.26	749
30–34	1,118,787	10.02	0.58	0.87	1.16	7.42	89.70	28.75	55.86	5.09	0.28	703
35–39	606,598	11.57	0.66	1.03	1.36	8.52	88.16	30.60	53.55	4.00	0.27	388
40–44	134,115	14.14	0.80	1.28	1.72	10.33	85.64	33.49	50.11	2.04	0.22	97
45–54	10,542	20.67	1.18	1.93	3.31	14.25	79.12	36.60	41.09	1.43	0.21	4
Non-Hispanic, single race <sup>3</sup>												
Black:												
All ages	511,439	14.59	1.47	1.56	1.86	9.70	85.18	32.73	48.81	3.65	0.23	326
Younger than 15	482	21.41	2.70	2.70	3.74	12.27	78.17	30.98	44.70	2.49	0.42	1
15–19	29,194	13.14	1.42	1.54	1.60	8.58	86.70	31.88	50.79	4.03	0.15	38
20–24	110,822	12.94	1.34	1.39	1.67	8.54	86.90	32.09	51.03	3.78	0.16	81
25–29	142,234	13.81	1.40	1.44	1.76	9.22	85.94	31.88	50.10	3.96	0.24	78
30–34	133,896	14.91	1.47	1.61	1.90	9.94	84.82	32.37	48.60	3.85	0.27	77
35–39	73,610	16.91	1.72	1.81	2.10	11.27	82.82	34.81	45.02	2.99	0.27	44
40–44	19,456	19.38	1.72	2.09	2.58	13.00	80.43	37.78	41.12	1.52	0.19	7
45–54	1,745	28.02	1.89	3.04	4.81	18.28	71.69	39.94	30.49	1.26	0.29	–
White:												
All ages	1,840,739	9.44	0.43	0.76	1.08	7.16	90.24	27.68	57.25	5.31	0.32	1,011
Younger than 15	407	14.60	1.49	2.97	2.48	7.67	85.15	31.68	49.26	4.21	0.25	3
15–19	48,060	10.38	0.79	1.05	1.23	7.31	89.45	27.98	56.89	4.57	0.17	50
20–24	276,137	9.48	0.52	0.80	1.09	7.07	90.22	28.06	57.07	5.09	0.31	184
25–29	515,204	8.97	0.41	0.71	1.03	6.82	90.71	27.35	57.86	5.51	0.32	293
30–34	615,589	9.03	0.38	0.72	1.02	6.91	90.63	27.01	57.80	5.82	0.34	277
35–39	318,572	10.15	0.40	0.81	1.17	7.77	89.50	28.37	56.26	4.87	0.35	167
40–44	62,180	12.22	0.57	1.03	1.41	9.21	87.46	30.96	53.80	2.69	0.32	35
45–54	4,590	17.22	0.94	1.37	2.55	12.36	82.50	34.59	45.88	2.03	0.28	2

See footnotes at end of table.

**Table 21. Births, by gestational age in weeks, and age and race and Hispanic origin of mother: United States, 2022—Con.**

Race and Hispanic origin and age of mother	All births	Preterm <sup>1</sup>					Term <sup>1</sup>				Post term <sup>1</sup>	
		Total under 37	Early			Late	Total	Early	Full	Late	42 and over	Not stated
Hispanic <sup>4</sup>	Number	Percent										Number
All ages	937,421	10.06	0.60	0.88	1.12	7.46	89.77	30.10	55.24	4.42	0.17	421
Younger than 15	796	14.41	0.88	1.01	1.26	11.25	85.46	33.50	47.53	4.42	0.13	5
15–19	56,566	9.67	0.68	0.84	1.06	7.09	90.12	28.61	55.80	5.71	0.21	61
20–24	206,948	8.82	0.57	0.73	0.91	6.60	91.00	28.46	57.30	5.23	0.18	93
25–29	270,357	9.13	0.52	0.80	0.96	6.85	90.70	29.40	56.58	4.72	0.16	121
30–34	237,703	10.27	0.60	0.90	1.16	7.61	89.56	30.42	54.86	4.28	0.17	97
35–39	129,675	12.32	0.74	1.15	1.46	8.98	87.53	32.78	51.69	3.06	0.15	32
40–44	33,104	14.85	0.78	1.34	1.94	10.80	85.06	35.24	48.41	1.41	0.09	12
45–54	2,272	22.62	1.36	2.55	3.83	14.88	77.29	38.16	38.51	0.62	0.09	–

– Quantity zero.

<sup>1</sup>Completed weeks based on the obstetric estimate of gestation; see Technical Notes in this report.

<sup>2</sup>Includes births to race and origin groups not shown separately, such as Hispanic single-race Black, Hispanic single-race White, and non-Hispanic multiple-race women, as well as births with origin not stated.

<sup>3</sup>Race groups are single race. Race and Hispanic origin are reported separately on birth certificates. In this table, non-Hispanic women are classified by race. Race categories are consistent with 1997 Office of Management and Budget standards; see Technical Notes. Single race is defined as only one race reported on the birth certificate.

<sup>4</sup>Includes all people of Hispanic origin of any race; see Technical Notes.

SOURCE: National Center for Health Statistics, National Vital Statistics System, natality data file.

**Table 22. Births, by birthweight: United States, 2010–2022, and by race and Hispanic origin of mother: United States, 2016–2022**

Race and Hispanic origin of mother and year		Birthweight (grams) <sup>1</sup>													
		Low birthweight													
		All births	Very low birthweight										5,000 or more	Not stated	
			Total under 2,500	Total under 1,500	Less than 500	500–999	1,000–1,499	1,500–1,999	2,000–2,499	2,500–2,999	3,000–3,499	3,500–3,999			4,000–4,499
All races and origins <sup>2</sup>	Number	Percent												Number	
2022.....	3,667,758	8.60	1.36	0.13	0.49	0.73	1.67	5.57	19.68	39.00	25.58	6.23	0.82	0.09	2,990
2021.....	3,664,292	8.52	1.38	0.13	0.51	0.75	1.68	5.46	19.25	38.85	25.93	6.47	0.87	0.10	3,331
2020.....	3,613,647	8.24	1.34	0.13	0.49	0.71	1.61	5.29	19.15	38.94	26.18	6.51	0.87	0.10	2,977
2019.....	3,747,540	8.31	1.38	0.14	0.50	0.74	1.63	5.30	19.07	39.07	26.09	6.49	0.87	0.10	3,668
2018.....	3,791,712	8.28	1.38	0.14	0.50	0.74	1.62	5.28	18.75	38.76	26.44	6.72	0.94	0.11	2,932
2017.....	3,855,500	8.28	1.41	0.14	0.52	0.74	1.63	5.25	18.72	38.76	26.44	6.75	0.95	0.11	3,002
2016.....	3,945,875	8.17	1.40	0.14	0.52	0.74	1.59	5.17	18.54	38.76	26.60	6.85	0.97	0.11	4,518
2015.....	3,978,497	8.07	1.40	0.15	0.52	0.73	1.58	5.09	18.36	38.84	26.73	6.90	0.98	0.12	3,621
2014.....	3,988,076	8.00	1.40	0.15	0.52	0.74	1.56	5.04	18.27	38.80	26.88	6.94	0.99	0.12	3,270
2013.....	3,932,181	8.02	1.41	0.15	0.53	0.73	1.56	5.05	18.22	38.93	26.85	6.86	0.99	0.11	4,452
2012.....	3,952,841	7.99	1.42	0.15	0.54	0.73	1.56	5.01	18.28	39.00	26.81	6.83	0.97	0.12	4,008
2011.....	3,953,590	8.10	1.44	0.15	0.54	0.75	1.58	5.08	18.44	39.13	26.56	6.71	0.95	0.11	4,570
2010.....	3,999,386	8.15	1.45	0.15	0.55	0.75	1.59	5.11	18.63	39.21	26.41	6.58	0.92	0.11	3,964
Non-Hispanic, single race <sup>3</sup>															
Black:															
2022.....	511,439	14.75	2.89	0.34	1.15	1.40	2.85	9.01	26.40	37.23	17.57	3.52	0.47	0.06	528
2021.....	517,889	14.66	2.91	0.32	1.15	1.44	2.91	8.84	26.08	37.38	17.74	3.58	0.49	0.06	580
2020.....	529,811	14.19	2.86	0.34	1.13	1.39	2.79	8.53	25.90	37.60	18.14	3.61	0.49	0.07	569
2019.....	548,075	14.15	2.94	0.36	1.15	1.43	2.79	8.43	25.75	37.96	18.01	3.59	0.47	0.06	688
2018.....	552,029	14.07	2.92	0.35	1.16	1.41	2.79	8.35	25.44	37.90	18.33	3.68	0.51	0.07	571
2017.....	560,715	13.89	2.95	0.36	1.18	1.41	2.72	8.22	25.44	37.96	18.37	3.76	0.51	0.07	642
2016.....	558,622	13.68	2.95	0.37	1.20	1.38	2.67	8.06	25.38	38.24	18.42	3.69	0.52	0.07	936
White:															
2022.....	1,840,739	7.12	1.01	0.08	0.34	0.59	1.41	4.70	16.84	38.38	28.91	7.65	0.99	0.10	1,125
2021.....	1,887,656	7.03	1.02	0.08	0.35	0.59	1.41	4.60	16.52	38.18	29.21	7.89	1.07	0.11	1,313
2020.....	1,843,432	6.84	0.99	0.08	0.34	0.56	1.35	4.50	16.37	38.18	29.46	7.96	1.07	0.12	1,144
2019.....	1,915,912	6.89	1.02	0.08	0.35	0.59	1.39	4.49	16.35	38.24	29.37	7.96	1.08	0.11	1,550
2018.....	1,956,413	6.91	1.02	0.09	0.34	0.58	1.38	4.52	16.01	37.80	29.74	8.25	1.16	0.12	1,259
2017.....	1,992,461	7.00	1.05	0.09	0.36	0.60	1.40	4.54	16.05	37.68	29.70	8.28	1.17	0.12	1,211
2016.....	2,056,332	6.97	1.07	0.09	0.37	0.61	1.39	4.51	15.88	37.59	29.82	8.39	1.21	0.12	2,212

See footnotes at end of table.

**Table 22. Births, by birthweight: United States, 2010–2022, and by race and Hispanic origin of mother: United States, 2016–2022—Con.**

Race and Hispanic origin of mother and year		Birthweight (grams) <sup>1</sup>													
		Low birthweight													
		All births	Very low birthweight				1,000–1,499	1,500–1,999	2,000–2,499	2,500–2,999	3,000–3,499	3,500–3,999	4,000–4,499	4,500–4,999	5,000 or more
Total under 2,500	Total under 1,500		Less than 500	500–999											
Hispanic <sup>4</sup>	Number	Percent												Number	
2022.....	937,421	7.87	1.24	0.12	0.45	0.67	1.51	5.12	20.15	40.66	24.93	5.54	0.75	0.10	479
2021.....	885,916	7.82	1.28	0.12	0.47	0.69	1.52	5.02	19.55	40.58	25.35	5.82	0.78	0.10	594
2020.....	866,713	7.40	1.19	0.12	0.45	0.63	1.43	4.77	19.41	40.63	25.74	5.92	0.79	0.11	436
2019.....	886,467	7.55	1.27	0.12	0.47	0.68	1.45	4.83	19.23	40.83	25.62	5.89	0.78	0.10	575
2018.....	886,210	7.49	1.24	0.12	0.46	0.66	1.43	4.81	19.01	40.64	25.90	6.02	0.83	0.11	381
2017.....	898,764	7.43	1.26	0.13	0.47	0.66	1.42	4.76	18.86	40.76	25.95	6.02	0.85	0.11	428
2016.....	918,447	7.32	1.24	0.13	0.46	0.65	1.41	4.68	18.76	40.79	26.06	6.10	0.85	0.12	556
All races and origins <sup>2</sup>		Number													
2022.....	3,667,758	315,288	49,871	4,879	18,087	26,905	61,182	204,235	721,299	1,429,131	937,571	228,179	29,923	3,377	2,990
2021.....	3,664,292	311,932	50,551	4,629	18,512	27,410	61,585	199,796	704,766	1,422,368	949,323	236,987	31,964	3,621	3,331
2020.....	3,613,647	297,604	48,326	4,790	17,805	25,731	58,162	191,116	691,557	1,405,907	945,295	235,023	31,500	3,784	2,977
2019.....	3,747,540	311,245	51,733	5,189	18,839	27,705	61,205	198,307	713,859	1,462,658	976,609	243,153	32,694	3,654	3,668
2018.....	3,791,712	313,752	52,171	5,303	18,970	27,898	61,509	200,072	710,444	1,468,639	1,001,803	254,704	35,435	4,003	2,932
2017.....	3,855,500	318,873	54,135	5,470	19,979	28,686	62,605	202,133	721,165	1,493,081	1,018,613	260,042	36,493	4,231	3,002
2016.....	3,945,875	321,839	55,110	5,710	20,323	29,077	62,863	203,866	730,710	1,527,707	1,048,476	269,865	38,264	4,496	4,518
2015.....	3,978,497	320,869	55,592	5,863	20,689	29,040	62,862	202,415	729,673	1,544,024	1,062,456	274,404	38,796	4,654	3,621
2014.....	3,988,076	318,847	55,947	5,936	20,721	29,290	61,992	200,908	727,987	1,546,274	1,071,007	276,592	39,353	4,746	3,270
2013.....	3,932,181	315,099	55,458	5,945	20,866	28,647	61,238	198,403	715,764	1,529,258	1,054,767	269,594	38,834	4,413	4,452
2012.....	3,952,841	315,709	56,252	5,947	21,432	28,873	61,499	197,958	721,840	1,540,161	1,058,604	269,581	38,288	4,650	4,008
2011.....	3,953,590	319,711	56,754	5,942	21,289	29,523	62,504	200,453	728,201	1,545,355	1,048,902	265,040	37,475	4,336	4,570
2010.....	3,999,386	325,563	57,841	5,980	22,015	29,846	63,427	204,295	744,181	1,566,755	1,055,004	262,997	36,706	4,216	3,964
Non-Hispanic, single race <sup>3</sup>															
Black:															
2022.....	511,439	75,359	14,774	1,723	5,892	7,159	14,557	46,028	134,893	190,192	89,775	17,984	2,387	321	528
2021.....	517,889	75,837	15,036	1,639	5,958	7,439	15,068	45,733	134,892	193,393	91,772	18,543	2,540	332	580
2020.....	529,811	75,085	15,146	1,806	5,985	7,355	14,785	45,154	137,053	198,979	96,025	19,101	2,618	381	569
2019.....	548,075	77,475	16,089	1,954	6,315	7,820	15,261	46,125	140,963	207,795	98,585	19,641	2,593	335	688
2018.....	552,029	77,584	16,127	1,941	6,406	7,780	15,411	46,046	140,295	209,028	101,089	20,285	2,806	371	571
2017.....	560,715	77,815	16,544	2,024	6,597	7,923	15,228	46,043	142,459	212,599	102,878	21,065	2,854	403	642
2016.....	558,622	76,299	16,465	2,083	6,675	7,707	14,885	44,949	141,557	213,260	102,702	20,571	2,880	417	936

See footnotes at end of table.

**Table 22. Births, by birthweight: United States, 2010–2022, and by race and Hispanic origin of mother: United States, 2016–2022—Con.**

Race and Hispanic origin of mother and year	All births	Birthweight (grams) <sup>1</sup>													
		Low birthweight													
		Total under 2,500	Total under 1,500	Less than 500	500–999	1,000– 1,499	1,500– 1,999	2,000– 2,499	2,500– 2,999	3,000– 3,499	3,500– 3,999	4,000– 4,499	4,500– 4,999	5,000 or more	Not stated
Non-Hispanic, single race <sup>3</sup>		Number													
White:															
2022.....	1,840,739	130,976	18,565	1,521	6,266	10,778	25,879	86,532	309,819	706,130	531,886	140,719	18,242	1,842	1,125
2021.....	1,887,656	132,551	19,157	1,471	6,589	11,097	26,587	86,807	311,569	720,236	550,917	148,810	20,181	2,079	1,313
2020.....	1,843,432	126,034	18,182	1,521	6,263	10,398	24,881	82,971	301,674	703,331	542,775	146,626	19,719	2,129	1,144
2019.....	1,915,912	131,959	19,443	1,587	6,643	11,213	26,572	85,944	312,909	732,022	562,273	152,340	20,720	2,139	1,550
2018.....	1,956,413	135,185	19,872	1,721	6,719	11,432	26,964	88,349	313,105	739,031	581,499	161,395	22,645	2,294	1,259
2017.....	1,992,461	139,358	20,981	1,752	7,233	11,996	27,968	90,409	319,523	750,331	591,376	164,898	23,299	2,465	1,211
2016.....	2,056,332	143,254	21,979	1,888	7,565	12,526	28,578	92,697	326,279	772,165	612,641	172,434	24,781	2,566	2,212
Hispanic <sup>4</sup>															
2022.....	937,421	73,767	11,622	1,121	4,262	6,239	14,180	47,965	188,801	380,957	233,558	51,942	7,016	901	479
2021.....	885,916	69,238	11,336	1,024	4,179	6,133	13,471	44,431	173,097	359,282	224,461	51,483	6,866	895	594
2020.....	866,713	64,092	10,344	998	3,890	5,456	12,394	41,354	168,111	351,994	223,005	51,290	6,857	928	436
2019.....	886,467	66,912	11,223	1,105	4,135	5,983	12,869	42,820	170,366	361,725	226,969	52,185	6,880	855	575
2018.....	886,210	66,310	11,006	1,084	4,040	5,882	12,706	42,598	168,418	359,966	229,450	53,359	7,358	968	381
2017.....	898,764	66,766	11,275	1,137	4,229	5,909	12,772	42,719	169,467	366,198	233,157	54,096	7,631	1,021	428
2016.....	918,447	67,210	11,378	1,175	4,237	5,966	12,910	42,922	172,171	374,434	239,210	55,983	7,770	1,113	556

<sup>1</sup>Equivalents of gram weights in pounds and ounces are shown in the User Guide; see reference 9 in this report.

<sup>2</sup>Includes births to race and origin groups not shown separately, such as Hispanic single-race Black, Hispanic single-race White, and non-Hispanic multiple-race women, as well as births with origin not stated.

<sup>3</sup>Race groups are single race. Race and Hispanic origin are reported separately on birth certificates. In this table, non-Hispanic women are classified by race. Race categories are consistent with 1997 Office of Management and Budget standards; see Technical Notes in this report. Single race is defined as only one race reported on the birth certificate.

<sup>4</sup>Includes all people of Hispanic origin of any race; see Technical Notes.

SOURCE: National Center for Health Statistics, National Vital Statistics System, natality data file.



**Table 23. Births, by birthweight and age and race and Hispanic origin of mother: United States, 2022**

Race and Hispanic origin and age of mother	All births	Birthweight (grams) <sup>1</sup>													
		Low birthweight													
		Very low birthweight													
		Total under 2,500	Total under 1,500	Less than 500	500–999	1,000–1,499	1,500–1,999	2,000–2,499	2,500–2,999	3,000–3,499	3,500–3,999	4,000–4,499	4,500–4,999	5,000 or more	Not stated
All races and origins <sup>2</sup>	Number	Percent													Number
All ages	3,667,758	8.60	1.36	0.13	0.49	0.73	1.67	5.57	19.68	39.00	25.58	6.23	0.82	0.09	2,990
Younger than 15	1,825	14.69	2.63	0.16	1.37	1.10	3.51	8.55	28.89	38.98	15.30	1.92	0.22	*	1
15–19	143,789	10.88	1.73	0.18	0.64	0.90	1.94	7.20	25.90	40.93	18.88	3.09	0.30	0.02	94
20–24	638,685	9.06	1.40	0.15	0.53	0.72	1.66	6.00	22.00	40.57	23.04	4.72	0.55	0.05	584
25–29	1,013,417	8.02	1.25	0.12	0.45	0.67	1.52	5.25	19.17	39.45	26.18	6.29	0.80	0.09	823
30–34	1,118,787	8.02	1.25	0.12	0.45	0.68	1.57	5.19	18.36	38.37	27.17	7.04	0.94	0.11	865
35–39	606,598	8.98	1.47	0.13	0.52	0.82	1.85	5.66	18.81	37.70	26.39	7.01	0.99	0.12	504
40–44	134,115	10.88	1.87	0.17	0.66	1.04	2.33	6.69	20.43	37.43	24.08	6.10	0.93	0.14	110
45–54	10,542	16.44	3.10	0.20	1.10	1.80	3.75	9.59	23.43	34.44	19.60	5.23	0.72	0.13	9
Non-Hispanic, single race <sup>3</sup>															
Black:															
All ages	511,439	14.75	2.89	0.34	1.15	1.40	2.85	9.01	26.40	37.23	17.57	3.52	0.47	0.06	528
Younger than 15	482	21.99	4.77	0.62	2.90	1.24	6.43	10.79	33.40	32.78	11.00	0.62	0.21	*	–
15–19	29,194	16.19	2.85	0.33	1.13	1.39	2.91	10.43	31.92	37.84	12.36	1.56	0.12	0.01	18
20–24	110,822	15.03	2.62	0.32	1.06	1.25	2.74	9.68	29.28	38.15	15.05	2.22	0.24	0.03	112
25–29	142,234	14.01	2.72	0.33	1.06	1.33	2.61	8.67	26.19	38.00	17.89	3.46	0.41	0.06	154
30–34	133,896	14.35	2.88	0.32	1.18	1.38	2.87	8.60	24.56	36.74	19.32	4.35	0.60	0.08	143
35–39	73,610	15.11	3.39	0.39	1.35	1.65	3.12	8.60	23.83	35.85	19.61	4.72	0.78	0.10	81
40–44	19,456	16.82	3.68	0.40	1.40	1.88	3.60	9.53	25.42	34.72	18.16	4.17	0.60	0.12	19
45–54	1,745	23.34	5.16	0.40	2.06	2.69	5.79	12.39	28.04	30.10	13.76	3.50	1.09	0.17	1
White:															
All ages	1,840,739	7.12	1.01	0.08	0.34	0.59	1.41	4.70	16.84	38.38	28.91	7.65	0.99	0.10	1,125
Younger than 15	407	13.05	2.46	*	0.74	1.72	4.19	6.40	23.15	39.41	19.70	4.43	0.25	*	1
15–19	48,060	9.71	1.57	0.13	0.57	0.87	1.82	6.31	22.16	40.85	22.54	4.27	0.43	0.04	38
20–24	276,137	7.75	1.13	0.11	0.41	0.62	1.47	5.15	19.06	40.14	26.31	5.98	0.69	0.06	181
25–29	515,204	6.71	0.94	0.08	0.32	0.54	1.31	4.45	16.49	38.79	29.33	7.62	0.97	0.10	323
30–34	615,589	6.63	0.92	0.07	0.30	0.54	1.30	4.41	15.84	37.76	30.21	8.36	1.10	0.11	347
35–39	318,572	7.34	1.01	0.07	0.32	0.62	1.54	4.80	16.38	37.27	29.37	8.36	1.15	0.12	194
40–44	62,180	9.01	1.40	0.13	0.47	0.80	1.90	5.71	17.71	37.42	27.18	7.39	1.13	0.16	37
45–54	4,590	13.15	2.09	0.20	0.74	1.16	2.64	8.42	20.80	34.93	23.62	6.50	0.87	0.13	4

See footnotes at end of table.

**Table 23. Births, by birthweight and age and race and Hispanic origin of mother: United States, 2022—Con.**

Race and Hispanic origin and age of mother		Birthweight (grams) <sup>1</sup>													
		Low birthweight													
		All births	Very low birthweight												
			Total under 2,500	Total under 1,500	Less than 500	500–999	1,000– 1,499	1,500– 1,999	2,000– 2,499	2,500– 2,999	3,000– 3,499	3,500– 3,999	4,000– 4,499	4,500– 4,999	5,000 or more
Hispanic <sup>4</sup>	Number	Percent													Number
All ages . . . . .	937,421	7.87	1.24	0.12	0.45	0.67	1.51	5.12	20.15	40.66	24.93	5.54	0.75	0.10	479
Younger than 15 . . . . .	796	11.06	1.51	*	0.75	0.75	1.38	8.17	30.28	42.34	14.82	1.26	0.25	*	–
15–19 . . . . .	56,566	9.14	1.31	0.15	0.47	0.70	1.54	6.30	26.07	42.69	19.02	2.78	0.28	0.01	29
20–24 . . . . .	206,948	7.57	1.11	0.12	0.42	0.57	1.33	5.12	21.83	42.47	23.16	4.41	0.52	0.05	116
25–29 . . . . .	270,357	7.17	1.08	0.10	0.39	0.59	1.33	4.76	19.44	41.16	25.69	5.70	0.75	0.09	123
30–34 . . . . .	237,703	7.57	1.24	0.12	0.47	0.66	1.54	4.79	18.60	39.62	26.68	6.48	0.91	0.13	125
35–39 . . . . .	129,675	8.93	1.56	0.16	0.55	0.85	1.85	5.52	18.96	38.47	26.01	6.49	0.99	0.15	71
40–44 . . . . .	33,104	10.59	1.79	0.11	0.64	1.03	2.38	6.42	20.65	38.10	23.84	5.74	0.92	0.15	15
45–54 . . . . .	2,272	18.22	4.01	0.09	1.36	2.55	4.75	9.46	23.11	35.78	17.21	5.19	0.40	0.09	–

\* Estimate does not meet NCHS standards of reliability.

– Quantity zero.

<sup>1</sup>Equivalents of gram weights in pounds and ounces are shown in the User Guide; see reference 9 in this report.

<sup>2</sup>Includes births to race and origin groups not shown separately, such as Hispanic single-race Black, Hispanic single-race White, and non-Hispanic multiple-race women, as well as births with origin not stated.

<sup>3</sup>Race groups are single race. Race and Hispanic origin are reported separately on birth certificates. In this table, non-Hispanic women are classified by race. Race categories are consistent with 1997 Office of Management and Budget standards; see Technical Notes in this report. Single race is defined as only one race reported on the birth certificate.

<sup>4</sup>Includes all people of Hispanic origin of any race; see Technical Notes.

SOURCE: National Center for Health Statistics, National Vital Statistics System, natality data file.

**Table 24. Twin, triplet, and higher-order multiple births: United States, 2010–2022, and by race and Hispanic origin of mother: United States, 2016–2022**

Race and Hispanic origin of mother and year	Total	Twin	Triplet and higher-order births <sup>1</sup>	Multiple birth rate	Twin birth rate	Triplet and higher-order birth rate <sup>1</sup>
All races and origins <sup>2</sup>		Number		Rate per 1,000		Rate per 100,000
2022.....	3,667,758	114,483	2,895	32.0	31.2	78.9
2021.....	3,664,292	114,161	2,933	32.0	31.2	80.0
2020.....	3,613,647	112,437	2,875	31.9	31.1	79.6
2019.....	3,747,540	120,291	3,286	33.0	32.1	87.7
2018.....	3,791,712	123,536	3,525	33.5	32.6	93.0
2017.....	3,855,500	128,310	3,917	34.3	33.3	101.6
2016.....	3,945,875	131,723	4,003	34.4	33.4	101.4
2015.....	3,978,497	133,155	4,123	34.5	33.5	103.6
2014.....	3,988,076	135,336	4,526	35.1	33.9	113.5
2013.....	3,932,181	132,324	4,700	34.8	33.7	119.5
2012.....	3,952,841	131,024	4,919	34.4	33.1	124.4
2011.....	3,953,590	131,269	5,417	34.6	33.2	137.0
2010.....	3,999,386	132,562	5,503	34.5	33.1	137.6
Non-Hispanic, single race <sup>3</sup>						
Black:						
2022.....	511,439	21,163	556	42.5	41.4	108.7
2021.....	517,889	21,047	424	41.5	40.6	81.9
2020.....	529,811	21,554	521	41.7	40.7	98.3
2019.....	548,075	22,397	589	41.9	40.9	107.5
2018.....	552,029	22,502	658	42.0	40.8	119.2
2017.....	560,715	22,982	671	42.2	41.0	119.7
2016.....	558,622	22,267	628	41.0	39.9	112.4
White:						
2022.....	1,840,739	59,969	1,549	33.4	32.6	84.2
2021.....	1,887,656	61,438	1,762	33.5	32.5	93.3
2020.....	1,843,432	60,082	1,664	33.5	32.6	90.3
2019.....	1,915,912	64,011	1,865	34.4	33.4	97.3
2018.....	1,956,413	67,203	1,996	35.4	34.4	102.0
2017.....	1,992,461	70,704	2,324	36.7	35.5	116.6
2016.....	2,056,332	73,425	2,502	36.9	35.7	121.7
Hispanic <sup>4</sup>						
2022.....	937,421	22,992	575	25.1	24.5	61.3
2021.....	885,916	21,401	554	24.8	24.2	62.5
2020.....	866,713	20,709	488	24.5	23.9	56.3
2019.....	886,467	21,811	590	25.3	24.6	66.6
2018.....	886,210	21,654	573	25.1	24.4	64.7
2017.....	898,764	22,041	614	25.2	24.5	68.3
2016.....	918,447	22,625	538	25.2	24.6	58.6

<sup>1</sup>Triplet, quadruplet, quintuplet, and higher-order multiple deliveries.<sup>2</sup>Includes births to race and origin groups not shown separately, such as Hispanic single-race Black, Hispanic single-race White, and non-Hispanic multiple-race women, as well as births with origin not stated.<sup>3</sup>Race groups are single race. Race and Hispanic origin are reported separately on birth certificates. In this table, non-Hispanic women are classified by race. Race categories are consistent with 1997 Office of Management and Budget standards; see Technical Notes in this report. Single race is defined as only one race reported on the birth certificate.<sup>4</sup>Includes all people of Hispanic origin of any race; see Technical Notes.

SOURCE: National Center for Health Statistics, National Vital Statistics System, natality data file.

**Table 25. Births, by plurality and age and race and Hispanic origin of mother: United States, 2022**

Race and Hispanic origin and age of mother	Total	Singleton	Twins	Triplet and higher-order <sup>1</sup>	Multiple birth rate	Twin birth rate	Triplet and higher-order birth rate <sup>1</sup>
All races and origins <sup>2</sup>	Number			Rate per 1,000		Rate per 100,000	
All ages . . . . .	3,667,758	3,550,380	114,483	2,895	32.0	31.2	78.9
Younger than 15 . . . . .	1,825	1,787	38	–	20.8	20.8	0.0
15–19 . . . . .	143,789	141,347	2,402	40	17.0	16.7	27.8
15–17 . . . . .	35,422	34,918	494	10	14.2	13.9	28.2
18–19 . . . . .	108,367	106,429	1,908	30	17.9	17.6	27.7
20–24 . . . . .	638,685	623,670	14,737	278	23.5	23.1	43.5
25–29 . . . . .	1,013,417	982,603	30,067	747	30.4	29.7	73.7
30–34 . . . . .	1,118,787	1,079,117	38,705	965	35.5	34.6	86.3
35–39 . . . . .	606,598	583,007	22,985	606	38.9	37.9	99.9
40–44 . . . . .	134,115	129,280	4,657	178	36.1	34.7	132.7
45–54 . . . . .	10,542	9,569	892	81	92.3	84.6	768.4
Non-Hispanic, single race <sup>3</sup>							
Black:							
All ages . . . . .	511,439	489,720	21,163	556	42.5	41.4	108.7
Younger than 15 . . . . .	482	470	12	–	24.9	24.9	0.0
15–19 . . . . .	29,194	28,505	677	12	23.6	23.2	41.1
15–17 . . . . .	7,818	7,639	173	6	22.9	22.1	76.7
18–19 . . . . .	21,376	20,866	504	6	23.9	23.6	28.1
20–24 . . . . .	110,822	107,068	3,678	76	33.9	33.2	68.6
25–29 . . . . .	142,234	135,960	6,152	122	44.1	43.3	85.8
30–34 . . . . .	133,896	127,453	6,300	143	48.1	47.1	106.8
35–39 . . . . .	73,610	70,164	3,339	107	46.8	45.4	145.4
40–44 . . . . .	19,456	18,610	787	59	43.5	40.5	303.2
45–54 . . . . .	1,745	1,490	218	37	146.1	124.9	2,120.3
White:							
All ages . . . . .	1,840,739	1,779,221	59,969	1,549	33.4	32.6	84.2
Younger than 15 . . . . .	407	399	8	–	19.7	19.7	0.0
15–19 . . . . .	48,060	47,260	778	22	16.6	16.2	45.8
15–17 . . . . .	9,884	9,764	116	4	12.1	11.7	40.5
18–19 . . . . .	38,176	37,496	662	18	17.8	17.3	47.2
20–24 . . . . .	276,137	269,787	6,239	111	23.0	22.6	40.2
25–29 . . . . .	515,204	499,325	15,449	430	30.8	30.0	83.5
30–34 . . . . .	615,589	592,962	22,026	601	36.8	35.8	97.6
35–39 . . . . .	318,572	305,358	12,916	298	41.5	40.5	93.5
40–44 . . . . .	62,180	59,861	2,249	70	37.3	36.2	112.6
45–54 . . . . .	4,590	4,269	304	17	69.9	66.2	370.4
Hispanic <sup>4</sup>							
All ages . . . . .	937,421	913,854	22,992	575	25.1	24.5	61.3
Younger than 15 . . . . .	796	784	12	–	15.1	15.1	0.0
15–19 . . . . .	56,566	55,766	800	–	14.1	14.1	0.0
15–17 . . . . .	15,184	15,007	177	–	11.7	11.7	0.0
18–19 . . . . .	41,382	40,759	623	–	15.1	15.1	0.0
20–24 . . . . .	206,948	203,106	3,765	77	18.6	18.2	37.2
25–29 . . . . .	270,357	263,867	6,345	145	24.0	23.5	53.6
30–34 . . . . .	237,703	230,725	6,815	163	29.4	28.7	68.6
35–39 . . . . .	129,675	125,483	4,061	131	32.3	31.3	101.0
40–44 . . . . .	33,104	32,076	990	38	31.1	29.9	114.8
45–54 . . . . .	2,272	2,047	204	21	99.0	89.8	924.3

– Quantity zero.

0.0 equals zero events in the numerator or percentage of less than 0.05.

<sup>1</sup>Triplet, quadruplet, quintuplet, and higher-order deliveries.<sup>2</sup>Includes births to race and origin groups not shown separately, such as Hispanic single-race Black, Hispanic single-race White, and non-Hispanic multiple-race women, as well as births with origin not stated.<sup>3</sup>Race groups are single race. Race and Hispanic origin are reported separately on birth certificates. In this table, non-Hispanic women are classified by race. Race categories are consistent with 1997 Office of Management and Budget standards; see Technical Notes in this report. Single race is defined as only one race reported on the birth certificate.<sup>4</sup>Includes all people of Hispanic origin of any race.

SOURCE: National Center for Health Statistics, National Vital Statistics System, natality data file.

## Technical Notes

### Data source

Data shown in this report for 2022 are based on 100% of the birth certificates filed in all states and the District of Columbia. The data are provided to the National Center for Health Statistics (NCHS) through the Vital Statistics Cooperative Program. Information on the percentage of records with missing information for maternal and infant characteristics included in this report is shown by state in the “User Guide to the 2022 Natality Public Use File” (9); methodological and measurement information for these characteristics is also available in the 2022 User Guide.

### 2003 revision of U.S. Standard Certificate of Live Birth

Data for 2016–2022 presented in this report are based on the 2003 revision of the U.S. Standard Certificate of Live Birth; data for 2010–2015 are based on both the 1989 and 2003 birth certificate revisions. The 2003 revision is described in detail elsewhere (26).

### Age of mother

Age of mother is computed in most cases from the mother's and infant's dates of birth as reported on the birth certificate. Since 2007, age of mother has been imputed for age 8 and younger and age 65 and older. Mothers age 9 are recoded as age 10. A review and verification of unedited data for several years including 2007 showed that most births reported as occurring to women age 50 and older were to women ages 50–54. In this report, the final age group shown in the tables (45–49, 45–54, or 50–54) includes births to mothers up to age 64. For historical information on mother's age, see the 2022 User Guide (9).

### Marital status

Due to state statutory restrictions, beginning in 2017, California no longer provides record-level data on the marital status of the mother for births occurring in, or to residents of, the state. Instead of record-level data, California provides to NCHS counts of births by marital status category (married, unmarried, and unknown) by age and race and Hispanic origin of the mother according to the age and race and Hispanic-origin categories shown in this report. For consistency with procedures for handling missing information for other jurisdictions, California's counts of birth by marital status were redistributed (proportionately) to the same maternal age, race, and marital status subgroups in the data set to obtain the national estimates by marital status. This approach is consistent with hot-deck procedures used for non-California records to impute data for missing age, race, and marital status based on records for which these characteristics are known.

## Hispanic origin and race

### Hispanic origin

Hispanic origin and race are reported separately on the birth certificate. Data are shown in most cases for five specified Hispanic groups: Central and South American, Cuban, Dominican, Mexican, Puerto Rican, and other and unknown Hispanic. Before 2018, data for the Dominican subgroup had been included in the category of other and unknown Hispanic. In tabulations of birth data by race and Hispanic origin, data for people of Hispanic origin are not further classified by race because most births to Hispanic women are reported as White.

Items asking for the Hispanic origin of the mother (and the father) have been included on the birth certificates of all states, District of Columbia, U.S. Virgin Islands, and Guam since 1993, and on the birth certificates of Puerto Rico starting in 2005 and Commonwealth of the Northern Marianas starting in 2010 (9,12). American Samoa does not collect information on Hispanic origin.

The Hispanic-origin question on the 2003 revision of the birth certificate asks respondents to select only one response. Occasionally, however, more than one Hispanic-origin response is given (that is, a specified Hispanic group [Central and South American, Cuban, Dominican, Mexican, or Puerto Rican] in combination with one or more other specified Hispanic group). From 2003 to 2012, respondents who selected more than one Hispanic origin on the birth certificate were classified as “Other Hispanic.” Beginning with the 2013 data year, respondents who select more than one Hispanic origin are randomly assigned to a single Hispanic origin. This change was implemented to be consistent with the coding methods of the American Community Survey (27), on which the rates for the specified Hispanic groups from 2020 are based (see “Population estimates for specific Hispanic groups”).

### Race

This report presents data on race and Hispanic origin based on the 1997 Office of Management and Budget standards (11). The 2003 revision of the U.S. Standard Certificate of Live Birth allows the reporting of five race categories either alone (single race) or in combination (more than one race or multiple races) for each parent (10), according to the revised standards issued by the Office of Management and Budget in 1997 (11). The five categories for race specified in the revised standards are: American Indian and Alaska Native, Asian, Black or African American, Native Hawaiian and Other Pacific Islander, and White; see the 2022 User Guide (9).

Beginning in 2016, all states and the District of Columbia, in addition to Puerto Rico, U.S. Virgin Islands, Guam, and Commonwealth of the Northern Marianas, were reporting race according to the 1997 revised Office of Management and Budget standards, with 2.9% of mothers in the United States reporting more than one race in 2022 (9). Before 2016, the multiple-race reporting states varied widely, increasing from 6 states in 2003 to all 50 states, District of Columbia, and all territories except American Samoa in 2016.

## Gestational age

Beginning with the 2014 data year, NCHS transitioned to a new standard for estimating the gestational age of the newborn. The new measure—the obstetric estimate of gestation at delivery—replaces the measure based on the date of the last normal menses (23). National data based on the obstetric estimate are available only from data year 2007 forward. Gestational age estimates differ somewhat between the obstetric estimate- and last normal menses-based measures. Accordingly, gestational age data in this report are based on the obstetric estimate. Information and discussion of the reasons for the change, and a detailed comparison of the two measures, are presented elsewhere (23).

## Computations of percentages, percent distributions, and means

For information and discussion on computations of percentages, percent distributions, and means, see the 2022 User Guide (9).

## Population denominators

The birth and fertility rates for 2022 shown in [Tables 1, 2, 5, 8, 10, 11, and I-2](#) are estimated as of July 1, 2022, based on the blended base population estimates produced by the U.S. Census Bureau instead of the April 1, 2020, decennial population count. The blended base consists of the blend of 2020 census data, 2020 demographic analysis estimates, and vintage 2020 estimates (28,29). These populations are shown in the 2022 User Guide (9). The population estimates provided by the U.S. Census Bureau (30) are presented by age, sex, and race. The race categories are consistent with the revised 1997 Office of Management and Budget standards (10).

The birth and fertility rates by state shown in [Table 8](#) are based on state population counts, which are based on the blended base population estimates provided by the U.S. Census Bureau (30). Birth and fertility rates for the territories except Puerto Rico shown in [Table 8](#) are based on population estimates provided by the U.S. Census Bureau's International Data Base (31). Rates for Puerto Rico are based on estimates developed from a base that integrates the 2020 census data and vintage 2020 estimates, as of July 1, 2022, and are provided by the U.S. Census Bureau (32).

Rates by state and territory shown in this report may differ from rates computed based on other population estimates; rates for smaller population subgroups, such as those for teen mothers, may be particularly affected by differences in population estimates. Birth and fertility rates by month shown in [Table I-2](#) are based on monthly population estimates for 2022, which are also based on blended base population estimates. For 2022, rates for unmarried women shown in [Tables 10 and 11](#) are based on distributions of the population by marital status averaged over a 2-year period for 2021–2022. These distributions were reported by the U.S. Census Bureau in the March Current Population Survey for each year (33,34) and have been adjusted to July 1,

2022, (blended base) population levels (30) by NCHS' Division of Vital Statistics (35).

The population distributions by marital status are based on a 2-year average (of the current and previous year) from 2021 to 2022 (12). For earlier years, rates for unmarried females are based on distributions of the population by marital status averaged over a 3-year period (35).

Birth and fertility rates for 2020 have been revised and may differ from those published in “Births: Final Data for 2020” and elsewhere (14). Previously published birth and fertility rates for 2020 were based on postcensal population estimates derived from the 2010 census. The revised rates shown in this report are based on population estimates consistent with the blended base as of April 1. When the intercensal population estimates for 2011–2019 based on the blended base population estimates become available, revised birth and fertility rates for 2011–2019 will be presented in a separate report.

## Population estimates for specific Hispanic groups

The 2022 population estimates for the specific Hispanic population groups were not available when this report was being prepared (36). Accordingly, birth and fertility rates for these groups for 2022 are not shown in this report. Once available, birth and fertility rates for the specific Hispanic population groups will be published.

## Computation of rates and percentages

An asterisk (\*) in the tables indicates that a rate or percentage does not meet NCHS standards of reliability. For population-based rates, an asterisk is shown in place of a rate based on fewer than 20 births in the numerator. For percentages, NCHS has adopted new standards and implemented them for natality data beginning with the 2017 data year. The new standard is based on denominator size and on the absolute or relative widths of the confidence interval of the proportion or percentage calculated using the Clopper–Pearson method. This compares with the previous standard for which an asterisk was used for percentages based on fewer than 20 births in the numerator, similar to the standard for population-based rates. For detailed information on the 2017 standard, see the 2022 User Guide and “National Center for Health Statistics Data Presentation Standards for Proportions” (9,37).

## Random variation and significance testing for natality data

For information and discussion on random variation and significance testing for natality data, see the 2010 User Guide (38).

For information and discussion on random variation and significance testing for birth and fertility rates for Central and South American, Cuban, Dominican, Mexican, Puerto Rican, and other Hispanic populations based on American Community Survey population estimates, see the 2022 User Guide (9).

## **Definitions of medical terms**

For definitions and discussion of medical and health items presented in this report, see "Guide to Completing the Facility Worksheets for the Certificate of Live Birth and Report of Fetal Death" (39).

**U.S. DEPARTMENT OF  
HEALTH & HUMAN SERVICES**

Centers for Disease Control and Prevention  
National Center for Health Statistics  
3311 Toledo Road, Room 4551  
Hyattsville, MD 20782-2064

FIRST CLASS MAIL  
POSTAGE & FEES PAID  
CDC/NCHS  
PERMIT NO. G-284

OFFICIAL BUSINESS  
PENALTY FOR PRIVATE USE, \$300

For more NCHS NVSRs, visit:  
<https://www.cdc.gov/nchs/products/nvsr.htm>.



---

National Vital Statistics Reports, Vol. 73, No. 2, April 4, 2024

---

**Contents**

Abstract ..... 1  
Introduction ..... 2  
    2003 revision of U.S. Standard Certificate of Live Birth ..... 2  
Methods ..... 2  
Demographic Characteristics (Tables 1–12) ..... 3  
    Births and birth rates ..... 3  
    Age of mother ..... 3  
    Live-birth order ..... 4  
    Total fertility rate ..... 5  
    Births and birth rates by state ..... 5  
    Birth rates for teenagers by state ..... 5  
    Births to unmarried women ..... 5  
Cigarette Smoking Before and During Pregnancy (Tables 13–15) ..... 5  
Medical and Health Services Utilization and Source of Payment  
for the Delivery (Tables 13–19) ..... 6  
    Use and timing of prenatal care ..... 6  
    Method of delivery ..... 6  
    Source of payment for the delivery ..... 7  
Infant Health Characteristics (Tables 20–25) ..... 7  
    Period of gestation ..... 7  
    Birthweight ..... 7  
Multiple births ..... 9

References ..... 9  
List of Detailed Tables ..... 11  
List of Internet Tables ..... 11  
Technical Notes ..... 53

**Acknowledgments**

This report was prepared in the Division of Vital Statistics under the general direction of Acting Director Paul Sutton; Robert Anderson, Chief, Statistical Analysis and Surveillance Branch; and Joyce Martin, Team Leader, Perinatal Research and Statistics Team, Statistical Analysis and Surveillance Branch. Rajesh Virkar, Chief of the Systems, Programming, and Statistical Resources Branch, and Steve J. Steimel and Annie S. Liu, Systems, Programming, and Statistical Resources Branch, provided computer programming support and statistical tables. Steve J. Steimel and Annie S. Liu also prepared the natality file. The Data Acquisition and Evaluation Branch staff evaluated the quality of and acceptance procedures for the state data files on which this report is based. The National Center for Health Statistics Office of Information Services, Information Design and Publishing Staff edited and produced this report: editor Jane Sudol, typesetter and graphic designer Odell D. Eldridge (contractor), and typesetter Ebony Davis.

---

**Suggested citation**

Osterman MJK, Hamilton BE, Martin JA, Driscoll AK, Valenzuela CP. Births: Final data for 2022. National Vital Statistics Reports; vol 73, no 2. Hyattsville, MD: National Center for Health Statistics. 2024. DOI: <https://dx.doi.org/10.15620/cdc:145588>.

---

**Copyright information**

All material appearing in this report is in the public domain and may be reproduced or copied without permission; citation as to source, however, is appreciated.

---

**National Center for Health Statistics**

Brian C. Moyer, Ph.D., *Director*  
Amy M. Branum, Ph.D., *Associate Director for Science*

**Division of Vital Statistics**

Paul D. Sutton, Ph.D., *Acting Director*  
Andrés A. Berruti, Ph.D., M.A., *Associate Director for Science*