

Advance Report of Final Natality Statistics, 1982

Births and birth rates

There were 3,680,537 registered live births in the United States during 1982. This figure represents a small increase, 1 percent, over the 3,629,238 births registered in 1981 (figure 1). Provisional data for 1983 indicate a decline of about 2 percent from the final total for 1982.

Changes in the birth and fertility rates between 1981 and 1982 were 1 percent or less (table 1). The birth rate was 15.9 live births per 1,000 population in 1982, 1 percent higher than the 1981 rate of 15.8. Provisional statistics for 1983 indicate a decline of about 3 percent in the birth rate.

The fertility rate was 67.3 live births per 1,000 women

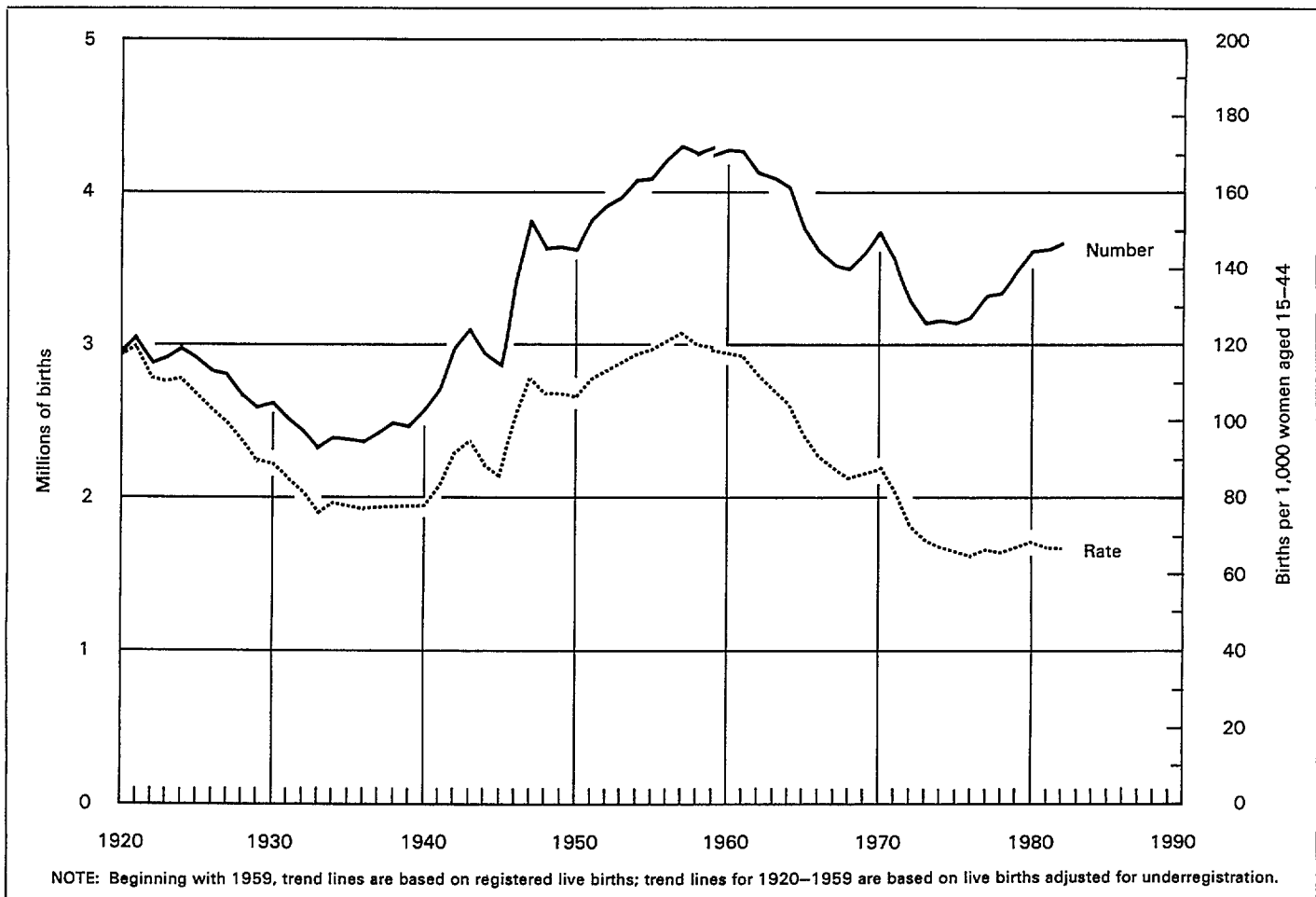


Figure 1. Live births and fertility rates: United States, 1920-82

aged 15–44 years, less than 1 percent below the rate in 1981 of 67.4. A decline of about 3 percent in the fertility rate is indicated for 1983 according to provisional data.

There were relatively small changes in the birth rates for women in the peak years of childbearing. The birth rate for women aged 15–17 increased by 1 percent while rates for women aged 18–19, 20–24, and 25–29 years declined by 1 per-

cent or less. In contrast rates for women aged 30–34 and 35–39 years increased by 5 and 6 percent, respectively; and the rate for women aged 40–44 years increased 3 percent. Rates for women aged 10–14 and 45–49 years were unchanged. (See figure 2 for birth rates by age of mother and tables 2, 3, and 4 for births and birth rates by age of mother.)

These trends continue the pattern generally observed for

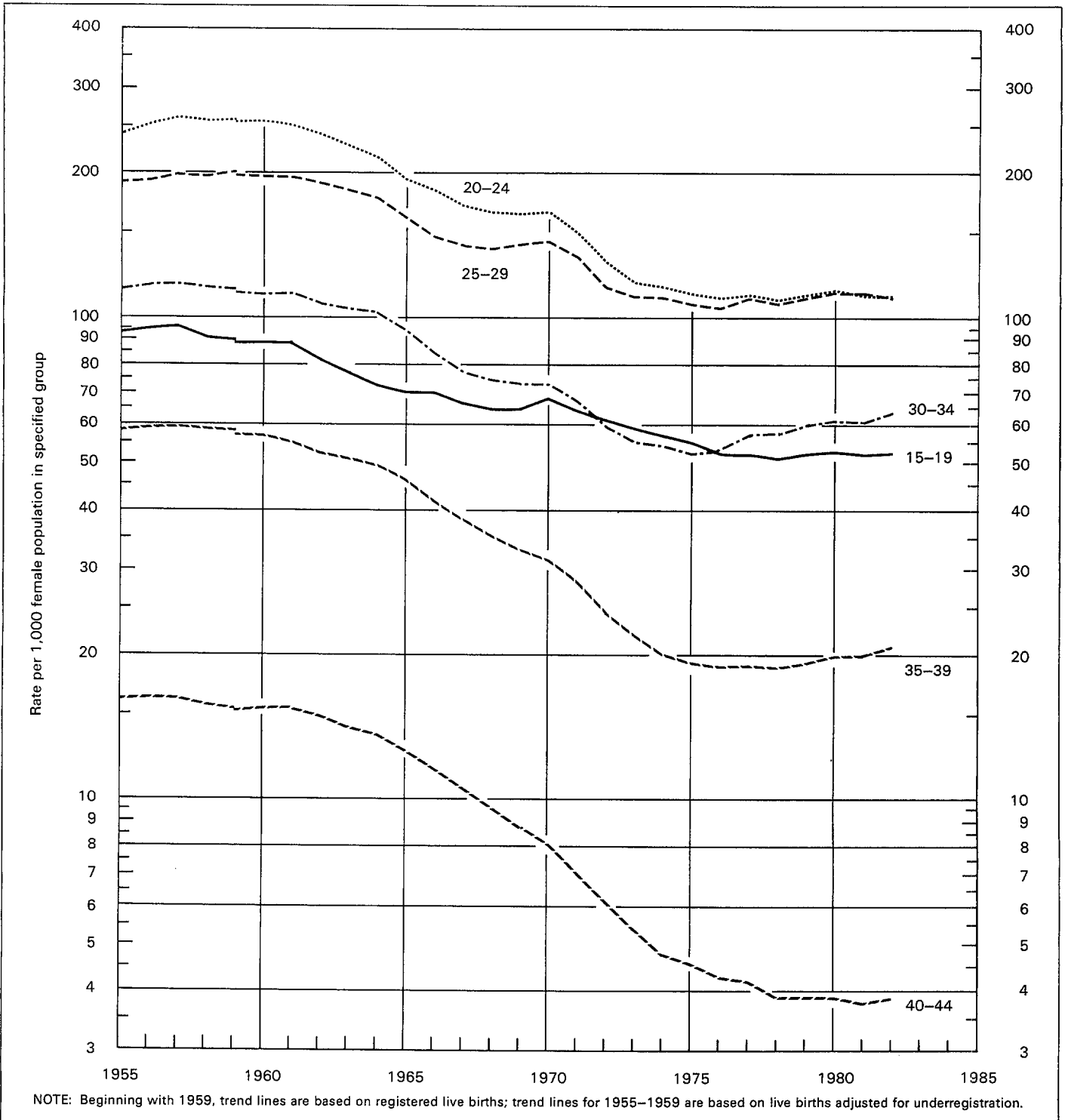


Figure 2. Birth rates by age of mother: United States, 1955–82

the last decade. Levels of childbearing by women aged 15–29 years declined considerably from the early to mid seventies and have been relatively stable since then. Rates for women aged 30–39 also declined considerably during the early seventies, but since the mid seventies their rates have risen steadily, with the rate for women aged 30–34 years increasing 23 percent from 1975 to 1982. The result of this trend has been a marked shift in childbearing to later ages. For example, the proportion of all births occurring to teenagers fell from 19 percent in 1975 to 14 percent in 1982, while the proportion of births occurring to mothers aged 30 years and older increased from 17 to 22 percent during this period.

Between 1981 and 1982 birth rates by live-birth order declined for first births (1 percent), fifth births (7 percent), and eighth and higher order births (25 percent). Only the rate for second order births increased (2 percent), while rates for third, fourth, and sixth and seventh order births were unchanged (figure 3 and table 5). Between 1980 and 1981 there had been no increases in birth rates by live-birth order.

As in the past 2 years the overall decline in the first birth rate (1 percent between 1981 and 1982) tends to obscure very divergent trends in these rates by age of mother. Between 1981 and 1982 the first birth rate fell by less than 1 percent for teenagers 15–19 years, by 1 percent for women 25–29 years, and by 2 percent for women aged 20–24 years. In sharp contrast the rate increased by 10 percent for women aged 30–34 years and by 18 percent for women aged 35–39 years. There was no change in the first birth rates for women in their forties.

The increases in first birth rates for women in their thirties reflect a continuation and intensification of the pattern observed since 1972.¹ The increase in the first birth rate for women aged 30–34 years is the largest observed since 1978, while the rise in the rate for women aged 35–39 years is the largest measured during this 10-year period.

Between 1972 and 1982 the first birth rate for women in their early thirties more than doubled, increasing from 7.0 first births per 1,000 women aged 30–34 years to 14.6, while the rate for women aged 35–39 years rose 83 percent, from 1.8 to 3.3.

Increases in birth rates for second order births were observed in 1982 for women aged 15–24 and 30–39 years. The increases were 1 percent for women aged 15–19 and 20–24 years, 6 percent for women aged 30–34, and 13 percent for women aged 35–39 years. There were no changes in the rates for women of other ages. This pattern of large increases in second birth rates for women in their thirties is also consistent with that observed for first birth rates. Second birth rates for women in their thirties increased by more than 60 percent between 1972 and 1982.

The fertility rate for white women remained unchanged in 1982 at 63.9 births per 1,000 women aged 15–44 years. The rate for black women was 84.1, a decline of 2 percent from the 1981 rate of 85.4. The changes in birth rates for white women were the same as those observed for all women in most age groups; the only exception was an increase in the birth rate

for white teenagers 10–14 years old. Rates for black women declined or were unchanged at every age except for increases for women aged 35–39 and 45–49 years. The declines ranged from less than 1 to 4 percent.

Changes in first birth rates for white and black women were similar, except that the increases in rates for women in their thirties were substantially greater for white than for black women.

As noted above, the tendency for women to begin motherhood at later ages appears to have strengthened in 1982 after a slowdown in 1981. An increasing proportion of women who have been delaying childbearing seem to be postponing their first births until their mid or even late thirties rather than their late twenties or early thirties as was the case just a few years earlier. Increases in first birth rates for women in their thirties were substantial between 1981 and 1982, while the rate for women aged 25–29 years declined for the second consecutive year. The levels of childlessness among women in their thirties are continuing to increase and are at levels not observed since the 1950's. Other National Center for Health Statistics (NCHS) data indicate that the incidence of impaired fertility rises sharply with advancing age.² Therefore, continued delay of motherhood by these women may reduce the number of children they ultimately have and may result in a greater level of unintended childlessness.

The total fertility rate indicates the number of births that 1,000 women would have if they experienced throughout their childbearing years the set of age-specific birth rates observed in a given calendar year. It is a hypothetical measure that shows the implications of current levels of fertility for completed family size. If a group of 1,000 women were to experience the age-specific birth rates of 1982 over their entire childbearing period, they would bear 1,828.5 children. This is slightly higher than the 1981 rate (1,815.0), but it is still 13 percent below the level considered necessary for a given generation to exactly replace itself in the population (2,110.0). The total fertility rate for white women was 1,742.0 in 1982, also slightly above the 1981 rate (1,726.0), but again well below replacement level. The rate for black women in 1982 (2,188.5) was lower than in 1981 (2,206.0), but was still above replacement.

The total number of births increased in six geographic divisions and declined in three (table 6). The increases were 2 percent in the New England, South Atlantic, and Pacific Divisions, 3 percent in the Mountain Division, 5 percent in the West South Central Division, and 13 percent in the Middle Atlantic Division. The number of births declined 1 percent in the East North Central, West North Central, and East South Central Divisions. There were increases in the number of births for 30 States and the District of Columbia and declines for 20 States.

The birth rates per 1,000 population increased by 2 percent or less in four geographic divisions: New England, Middle Atlantic, South Atlantic, and West South Central. Rates declined by 1 percent in the remaining five divisions. There were declines in rates for 25 States: 1 percent for 14 States, 2 percent for 6 States, and 3–5 percent for 5 States. The birth rate

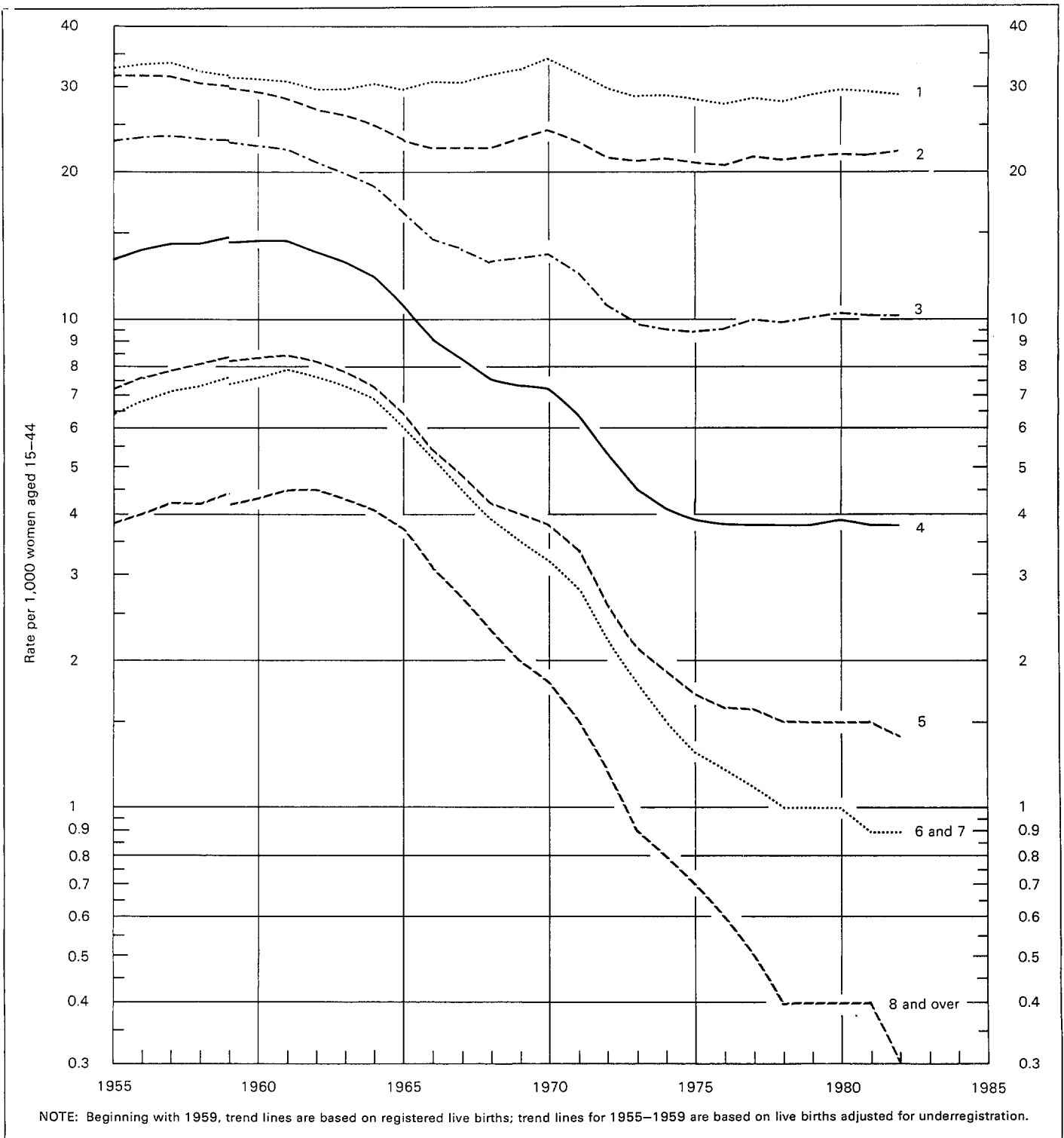


Figure 3. Birth rates by live-birth order: United States, 1955-82

increased in 20 States and the District of Columbia, with increases of 1 percent for 9 States, 2 percent for 7 States, and 3-5 percent for 4 States and the District of Columbia. Rates were unchanged for California, North Dakota, South Dakota, Vermont, and Wisconsin.

Fertility rates for the nine geographic divisions ranged from

56.4 live births per 1,000 women aged 15-44 years (New England) to 82.4 (Mountain). The rates in the West North Central, West South Central, Mountain, and Pacific Divisions were all higher than the rate for the United States (67.3). The rates in the remaining five divisions were lower than the U.S. rate. Fertility rates by State varied widely, ranging from 54.4

(Massachusetts) to 115.4 (Utah). Rates were higher than the U.S. rate for 25 States and lower for 25 States and the District of Columbia.

Sex ratio

The sex ratio at birth in 1982 was 1,051 male births per 1,000 female births compared with 1,052 in 1981 (table 7). The ratio has ranged between 1,051 and 1,055 since 1968.

The ratio for white births was 1,054, the lowest it has been since 1966 (1,053); it was 1,056–1,059 in the intervening years. The ratio for black births was 1,033, the highest it has been since 1942 (also 1,033). During the 1970's the ratio for black births ranged from 1,024 to 1,031. Ratios for other specified racial groups have generally shown more year-to-year variation.

Month of birth

There has been a consistent pattern in the monthly occurrence of births for many years, with the peak months generally August or September (table 8). The underlying trends can be observed if the seasonal component is removed from the monthly birth and fertility rates. Seasonally adjusted birth and fertility rates in the first half of 1982 tended to be somewhat higher than those in the last half. Rates were highest during the spring months, April, May, and June. Provisional data for 1983 suggest a continuation of the 1982 pattern: birth and fertility rates in the first 6 months of the year were considerably above those in the last 6 months.

Day of week

A pattern has been observed in recent years in the occurrence of births by day of the week. Deliveries are increasingly concentrated on Mondays through Fridays and corresponding deficits are observed for births occurring on weekends, especially Sundays (table 9). The index of occurrence of births suggests the magnitude of this pattern. The index is defined as the ratio of the average number of births on a given day of the week to the average daily number of births for the year multiplied by 100. The index of 100.0 represents the daily average number of births, 10,084 in 1982. For births occurring on Tuesdays the index was 107.6 compared with a Sunday index of 85.9. Another way to express this concept is to compare the average number of births by day. Thus the average number of births occurring on Tuesdays, 10,854, was 25 percent higher than the average number of births occurring on Sundays, 8,664. This pattern, which has been observed for several years and has strengthened each year, appears to be associated with the increasing proportion of deliveries by cesarean section.

Place of delivery and attendant at birth

The great majority of infants born in 1982 were delivered in hospitals (table 10). In that year, as in 1980 and 1981,

99.0 percent of births occurred in hospitals. A slightly higher proportion of black than white infants were born in hospitals, 99.3 compared with 99.0 percent. As has been true for many years, physicians were reported as the attendant for most hospital deliveries, although there was a slight decline between 1981 and 1982, from 98.1 to 97.9 percent. The number and proportion of hospital deliveries attended by midwives continued to increase in 1982 as they have in the past several years. In 1982, 63,062 hospital births (1.7 percent) were delivered by midwives compared with 55,537 births (1.6 percent) in 1981 (see tables 11 and 12).

Midwife-attended births both in and out of hospitals have increased substantially in recent years, although the numbers are still small. Births occurring in nonhospital settings and attended by midwives totaled 14,375 in 1982, 12 percent more than the number in 1981, 12,754.

Midwives attended increasing numbers of both white and black births in 1982, but the increase was much greater for white births (15 percent) than for black births (6 percent). Among white births there were sizable increases in midwife-attended births both in and out of hospitals (15 percent); however, among black births, there was an increase only in midwife deliveries occurring in hospitals (7 percent) with a 12-percent decline in midwife deliveries out of hospitals.

Age of father

The birth rate for men in 1982 was 56.4 live births per 1,000 men aged 15–54 years, a slight increase over the rate for 1981, 56.3 (basic data are shown in table 13 and birth rates by age of father, in table 14). The birth rate for white men increased less than 1 percent, from 52.3 in 1981 to 52.5 in 1982. The rate for black men declined 2 percent, from 81.2 to 79.8.

Rates increased for men aged 15–19 and 30–54 years, with increases ranging from 1 percent (15–19 years) to 4 percent (40–44 and 50–54 years). Rates for men aged 20–24 and 25–29 years declined 2 percent while the rate for men aged 55 years and over was unchanged.

Changes in rates for white men were comparable to those for men of all races except for men aged 15–19, for whom the rate declined slightly, and men 50–54 years, for whom the rate was unchanged. Rates for black men increased 1–5 percent for men aged 15–19 and 40–54 years. Rates for men aged 20–39 years declined by 1 to 5 percent.

Weight at birth

There was no change in the proportion of babies of low birth weight between 1981 and 1982. The percent of infants weighing less than 2,500 grams (5 pounds 8 ounces) at birth was 6.8 in both years.

The levels of low birth weight for both white and black babies declined slightly between 1981 and 1982. The racial differential continues to be substantial. In 1982, 5.6 percent of white infants and 12.4 percent of black infants were of low

birth weight. The 1981 figures were 5.7 percent and 12.5 percent, respectively.

As in previous years, babies born in 1982 to women aged 25–29 and 30–34 years were least likely to be of low birth weight (5.8–5.9 percent, respectively), while infants born to teenagers and to women in their forties were at greatest risk of low birth weight, with a range of 8.5 percent (births to women 40–44 years) to 13.8 percent (under 15 years). Between 1981 and 1982 there were slight declines or no changes in the proportions of low birth weight for babies born to women through age 29 years, 35–39 years, and 45–49 years. The percent low birth weight increased for babies born to mothers aged 30–34 and 40–44 years (2 percent). The trends by age for white and black infants were similar except that the proportions for black babies were substantially above those for white babies (table 15).

The median birth weight of babies born in 1982 was 3,370 grams (approximately 7 pounds 7 ounces), slightly higher than the median for 1979–81 births (3,360 grams). The medians for white and black babies were unchanged in 1982, 3,410 grams for white births (about 7 pounds 8 ounces) and 3,170 grams for black births (7 pounds). The racial differential of 240 grams in birth weight is equivalent to about 8 ounces.

The number and percent of low birth weight infants by race for each State are shown in table 16. There is considerable variation in the percent low birth weight from State to State within each racial group. However, much of the variation for black births is reduced when States with relatively few black births are excluded from the comparison.

Multiple births

There were 73,115 live births in multiple deliveries during 1982, 2 percent more than the 71,434 plural births recorded in 1981. Multiple births include twins, triplets, quadruplets, and higher order plural births. As in previous years the vast majority, 98 percent, of plural births in 1982 were live births in twin deliveries (71,631). For the second consecutive year, the multiple birth ratio increased, from 19.7 live births in multiple deliveries per 1,000 total live births in 1981 in 19.9 in 1982. The ratio had declined from 19.6 in 1978 to 19.3 in 1980.

The multiple birth ratio for white births increased from 18.8 in 1981 in 19.2 in 1982, but it was still below the ratio for black births, which declined from 24.7 to 24.1.

Multiple birth ratios increased with advancing age of mother, up to ages 35–39 years in 1982, a pattern that has been observed for many years. The ratio for births to mothers aged 35–39 years was 24.9, almost twice the ratio for births to teenagers 15–19 years old (13.1). Ratios for each age group in 1982 were generally slightly above the 1981 levels.

Births to unmarried women

There were 715,227 births to unmarried women in 1982, 4 percent more than the 686,605 births reported in 1981 (tables 16 and 17). Increases occurred for births to both white

and black unmarried women but, as in 1981, the increase was much greater for white women. There were 355,180 white births, 5 percent more than reported for 1981 (337,050) and 335,927 black births, 2 percent more than the 1981 figure (328,879).

National statistics on births to unmarried women are derived from two sources. For 41 States and the District of Columbia, marital status of the mother is reported directly on the birth certificate; for the remaining 9 States, which lack such an item, marital status is inferred from a comparison of the child's and parents' surnames. This procedure (described in the Technical notes) was initiated with the 1980 data year and represents a significant departure from the method used prior to 1980 to prepare national estimates of nonmarital births. Data derived from the new procedure are now available for 3 years; therefore, changes in childbearing by unmarried women since 1980 can be described without concern for the effect of the methodological change on the statistics.

The rate of childbearing by unmarried women increased 1 percent between 1981 and 1982; the 1982 rate, the highest ever observed, was 30.0 births per 1,000 unmarried women aged 15–44 years, compared with 29.6 in 1981. Since 1970 the rate for women aged 20–24 years has been the highest age-specific birth rate; this rate in 1982 was 41.4, 1 percent higher than in 1981. The birth rate for unmarried teenagers 18–19 years old was almost as high, 40.2.

The trend in birth rates for unmarried women continued to differ markedly for white and black women. The birth rate for unmarried white women increased 3 percent, from 18.2 in 1981 to 18.8 in 1982, while the rate for black women declined by 2 percent, from 81.4 to 79.6 (table 18). Because the rates for white and black women have increasingly converged in recent years, the racial differential in birth rates for unmarried women has been sharply reduced. For example, the rate for black women in 1975 was seven times the rate for white women; by 1982, this differential had fallen to four.

The continued increases in the number of births to unmarried women between 1981 and 1982 are associated with increases in the rate of childbearing and in the number of unmarried women of childbearing age. In general, the greatest increases in rates occurred to women 15–17 years and 30 years and older, while the greatest increases in numbers of unmarried women were observed for women aged 25–44 years. As a result of the differing patterns in rates and numbers of unmarried women by age, the number of nonmarital births occurring to young teenagers 15–17 years fell by 1 percent while the number of births to women aged 25–29 years increased 9 percent. The very large increases in the number of births to unmarried mothers aged 35–39 years (15 percent) and 40–44 years (12 percent) are due primarily to the sizable increase in the numbers of unmarried women in these age groups and to a lesser extent the increases in birth rates.

The ratio of births to unmarried women per 1,000 total live births was 194.3 in 1982, 3 percent higher than the ratio of 189.2 in 1981. In other words, nearly 20 percent of all births occurred to unmarried women. The ratio for white births was

120.7 and for black births, 566.8. Numbers of births to unmarried women and ratios for each State by race are shown in table 16.

Interval since last live birth

Intervals between successive births are calculated from the date of the last live birth and the date of the present birth. In 1982 the date of the mother's last live birth was reported on the birth certificates of 49 States and the District of Columbia; Texas did not request this information. Interbirth intervals are calculated for all second and higher order births. (See table 19.)

The proportions of births occurring within various intervals after the mother's previous live birth have been remarkably stable in recent years, following several years during which interbirth intervals lengthened. In 1982 as in 1980 and 1981, 13 percent of all births occurred within 18 months of the mother's previous live birth and 28 percent occurred within 2 years of the previous birth. There was a very slight increase in the proportion occurring within 3 years of the previous birth, from 52 percent in 1981 to 53 percent in 1982.

As in previous years black infants born in 1982 were more likely than white infants to have been born at very short intervals. In 1982 as in 1980 and 1981, 17 percent of black babies compared with 12 percent of white babies followed their mother's previous live birth by less than 18 months. Other vital statistics data indicate that closely spaced births are associated with higher rates of low birth weight and related health complications.³ For example, in 1982, 20 percent of infants born within 1 year of the previous live birth were of low birth weight, 2½ to 4½ times the comparable proportion for infants born after longer intervals.

Young mothers tend to have more closely spaced births than do older mothers. In 1982, 57 percent of second births to mothers aged 18–19 years followed the mother's first birth by less than 24 months compared with 33 percent for mothers aged 20–24 years and 12 percent for mothers aged 35–39 years.

Educational attainment of mother and father

Educational attainment of parents was reported on the birth certificates of 47 States and the District of Columbia in 1982. The reporting area has been constant since 1980 and excludes California, Texas, and Washington, which do not request this information.

The proportions of mothers and fathers who have completed at least a high school education were about the same in 1981 and 1982. In 1982, 78 percent of mothers and 83 percent of fathers had completed high school (table 20). There was no change in the percent of births occurring to very well educated parents, those who have completed at least 4 years of college: In 1982, 15 percent of mothers and 23 percent of fathers had college degrees. The proportion of births occurring to parents with 8 years of education or less has remained at about

4 percent for several years. The median years of school completed by mothers in 1982 was 12.6 years, and by fathers, 12.8 years.

Generally the educational attainment of white and black mothers changed little between 1981 and 1982. A substantial racial differential continues to exist. In 1982, 81 percent of white mothers compared with 65 percent of black mothers had completed high school. The differential is larger for college graduates: 17 percent of white mothers compared with 7 percent of black mothers had completed 4 years of college.

Mothers aged 30–34 years tend to have the highest level of educational attainment (table 21). In 1982, the median years of school completed by mothers in their early thirties was 14.0 compared with 12.5 years for mothers aged 20–24 years and 11.4 years for teenagers 15–19 years. Gains in educational attainment between 1981 and 1982 among mothers in their thirties were confined to white women. The median for white mothers aged 30–34 years increased from 14.1 to 14.3 years and for white mothers aged 35–39 years, from 13.0 to 13.6 years. The medians for black mothers remained at 12.7 years (ages 30–34 years) and 12.5 years (ages 35–39).

Births by other race and national origin groups

The number of births to women in certain racial groups other than white and black continued to increase in 1982, reflecting the substantial increase in population due to immigration among these groups. An especially large increase was observed for the number of "Other Asian or Pacific Islander" births, comprised primarily of births to Asian Indian, Cambodian, Korean, Laotian, Thai, and Vietnamese persons (but excluding Japanese, Chinese, Filipino, and Hawaiian births). These births numbered 56,442 in 1982, 19 percent more than in 1981 (47,457) and 129 percent more than in 1978 (24,597). An increase of 11 percent was also noted in the number of American Indian births between 1981 and 1982.

Births of "Other Asian or Pacific Islander" racial groups tend to occur to older mothers than births to white, black, or American Indian mothers (table 22). In 1982 only 6 percent of Asian mothers were under 20 years of age compared with 12 percent of white mothers, 25 percent of black mothers, and 21 percent of American Indian mothers. Nearly one-third of Asian mothers were aged 30 years and older, substantially above the comparable proportions for white (22 percent), black (16 percent), or American Indian (17 percent) mothers.

The incidence of low birth weight among births of racial groups other than white and black ranged from 5.3 percent (Chinese births) to 6.9 percent (Filipino and Other Asian or Pacific Islander births) (table 23). There has been some variability in these proportions within each racial group in recent years, but the percents of American Indian, Chinese, Japanese, Filipino, and Other Asian or Pacific Islander babies weighing less than 5½ pounds have consistently been slightly higher than the percent of white infants, but substantially lower than the

proportion for black infants.⁴ The very low proportion of teenage births among all these groups, except American Indian, is probably a major factor accounting for the relatively favorable proportions of low weight infants. As noted in an earlier section low birth weight levels are high for births to teenage mothers.

Month of pregnancy prenatal care began

For the fourth consecutive year there was virtually no change in the proportion of mothers who began prenatal care in the first trimester of pregnancy. As in 1979–81, 76 percent of births in 1982 were to mothers whose initial visit for prenatal care was in the first trimester. The proportion of mothers receiving care early had increased steadily for each of the 10 years up to 1979 for which this information has been available, from 68 percent in 1969 to 76 percent in 1979. Since 1979, this proportion has changed little, by less than one-half of one percent overall. The proportion of mothers whose prenatal care did not commence until the third trimester (delayed care) or who received no care at all was 5 percent in 1982. This proportion had declined from 8 percent in 1969 to 5 percent in 1978 and has remained unchanged since then. (Data for 1982 are shown in table 24.)

A substantial racial differential in the receipt of prenatal care persists. The proportion of white mothers receiving early care was unchanged in 1982: 79 percent began care in the first trimester. The proportion for black mothers declined from 62 to 61 percent between 1981 and 1982. There were increases in the proportions of white and black mothers receiving delayed or no care in 1982, from 4 to 5 percent of white mothers and from 9 to 10 percent of black mothers.

There were declines between 1981 and 1982 in the proportions of women receiving early care for all age groups through 25–29 years. Increases of up to 2 percent were observed in the proportions of women aged 30 and older receiving early care. Conversely, increases in the proportions of women receiving delayed or no care were noted for women of all ages except mothers aged 35–39 years. The increases ranged from 6 to 9 percent for women under age 30.

When the data are further examined by educational attainment of mother, a measure of socioeconomic status (data are not shown in this report), it is apparent that the only group for whom there was an increase in receipt of early prenatal care was mothers who had completed college. Conversely, there were increases in levels of delayed or no care for all mothers except those who were college graduates, which was unchanged from 1981. The increases were largest for women with 9–11 and 12 years of schooling.

Number of prenatal visits

The median number of visits made to obtain prenatal care by mothers having any care was 11.4 visits in 1982, unchanged

from 1981. The median for white mothers increased slightly from 11.7 visits in 1981 to 11.8 visits in 1982. The median for black mothers was 10.2, the same as for 1980 and 1981. (Basic data are shown in table 25.) Data on the number of prenatal visits were reported in 1982 by 49 States and the District of Columbia.

As would be expected the median number of prenatal visits is closely related to the trimester of pregnancy in which prenatal care began (table 25). Early care is associated with a greater number of visits than is late care. Mothers who began care in the first trimester made 2½ times as many visits (12.2) as mothers whose care was delayed until the third trimester (4.8 visits). There were almost no changes between 1981 and 1982 in the median number of visits for white and black mothers beginning care in each trimester. The exceptions were among white and black mothers whose care began in the third trimester; for these women there was a slight decline in the median number of visits.

Period of gestation

The birth certificates of 49 States and the District of Columbia in 1982 reported the first day of the mother's last normal menstrual period (LMP). The length of gestation can be determined by calculating the interval between the LMP date and the date of birth. Data for both 1981 and 1982 include records for which the gestational period is partially imputed because the day of the LMP was not reported. This procedure and its implications for the data are described in previous reports.^{5,6}

In 1982, 9.5 percent of all babies were born preterm, that is, prior to 37 completed weeks of gestation, slightly higher than the proportion in 1981, 9.4 percent (table 26). Three-quarters of all births in 1982 occurred at term, defined as 37–41 weeks of gestation. As in previous years black babies born in 1982 were more than twice as likely as white babies to be preterm, 17.1 percent compared with 8.0 percent.

The incidence of low birth weight is closely associated with the length of gestation. Among babies born prior to 37 weeks of gestation, 39.8 percent weighed less than 2,500 grams (5 pounds 8 ounces). The proportion low birth weight was 3.1 percent among births of 37 weeks or more gestation (term and post-term births). The racial differential in low birth weight is observed only among term and post-term births, for which 2.6 percent of white babies and 6.0 percent of black babies were of low birth weight in 1982. The comparable proportions among preterm births were 39.3 percent for white and 41.8 percent for black births. The substantial overall racial differential in low birth weight is therefore attributable to two different factors. First, there is a much greater level of preterm births among black babies, which is in turn associated with very high levels of low birth weight. The second factor is the much higher level of low birth weight among black than among white term and post-term births.

Apgar score

The Apgar score is a summary measure used to evaluate the newborn infant's overall physical condition at birth. The score is a composite evaluation of five factors—the infant's heart rate, respiratory effort, muscle tone, irritability, and color—each of which is assigned a value from 0 to 2. The overall score is the sum of the five values, with a score of 10 being optimum. In 1982, 46 States recorded the score at 1 minute after birth and 46 States and the District of Columbia reported the 5-minute score.

Since 1978 when data on Apgar scores first became available, there has been a slow but steady decline in the proportion of births with high scores (9 or 10) at both 1 and 5 minutes

after birth. In 1982, 44.0 percent of 1-minute scores and 87.3 percent of 5-minute scores were 9 or 10. Black infants were more likely than white infants to receive high 1-minute scores, while the reverse was true for 5-minute scores (tables 27 and 28).

Scores of 0 to 3, indicating a severely depressed status, were assigned to nearly the same proportions of babies during the past several years. In 1982, 2.4 percent of babies received 1-minute scores of 0 to 3 while 0.6 percent of infants had 5-minute scores in this range. Black infants were about twice as likely as white infants to receive scores of 0 to 3 at both 1 and 5 minutes. Because the incidence of low birth weight is very closely associated with low Apgar scores, the large racial differential in Apgar scores is very likely related to the similar differential in birth weight.

References

- ¹National Center for Health Statistics, S. J. Ventura: Trends in first births to older mothers, 1971-79. *Monthly Vital Statistics Report*. Vol. 31, No. 2 Supp. 2. DHHS Pub. No. (PHS) 82-1120. Public Health Service. Hyattsville, Md., May 1982.
- ²National Center for Health Statistics, W. D. Mosher and W. F. Pratt: Reproductive impairments among married couples, United States. *Vital and Health Statistics*. Series 23, No. 11. DHHS Pub. No. (PHS) 83-1987. Public Health Service. Washington. U.S. Government Printing Office, Dec. 1982.
- ³National Center for Health Statistics, E. Spratley and S. Taffel: Interval between births, United States, 1970-77. *Vital and Health Statistics*. Series 21, No. 39. DHHS Pub. No. (PHS) 81-1917. Public Health Service. Hyattsville, Md. U.S. Government Printing Office, Aug. 1981.
- ⁴National Center for Health Statistics, S. Taffel: Characteristics of Asian births, United States, 1980. *Monthly Vital Statistics Report*. Vol. 32, No. 10 Supp. DHHS Pub. No. (PHS) 84-1120. Public Health Service. Hyattsville, Md., Feb. 10, 1984.
- ⁵National Center for Health Statistics, S. Taffel, D. Johnson, and R. Heuser: A method of imputing length of gestation on birth certificates. *Vital and Health Statistics*. Series 2, No. 93. DHHS Pub. No. (PHS) 82-1367. Public Health Service. Washington. U.S. Government Printing Office, May 1982.
- ⁶National Center for Health Statistics: Advance report of final natality statistics, 1981. *Monthly Vital Statistics Report*. Vol. 32, No. 9 Supp. DHHS Pub. No. (PHS) 84-1120. Public Health Service. Hyattsville, Md., Dec. 1983.
- ⁷National Center for Health Statistics, S. J. Ventura: Trends in teenage childbearing, United States, 1970-81. *Vital and Health Statistics*. Series 21, No. 41. DHHS Pub. No. (PHS) 84-1919. Public Health Service. Washington. U.S. Government Printing Office. In press.
- ⁸National Center for Health Statistics, S. Taffel: Midwife and out-of-hospital deliveries, United States. *Vital and Health Statistics*. Series 21, No. 40. DHHS Pub. No. (PHS) 84-1918. Public Health Service. Washington. U.S. Government Printing Office, Feb. 1984.
- ⁹National Center for Health Statistics, S. Taffel: Factors associated with low birth weight, United States, 1976. *Vital and Health Statistics*. Series 21, No. 37. DHEW Pub. No. (PHS) 80-1915. Public Health Service. Hyattsville, Md. U.S. Government Printing Office, Apr. 1980.
- ¹⁰National Center for Health Statistics, S. J. Ventura: Trends and differentials in births to unmarried women, United States, 1970-76. *Vital and Health Statistics*. Series 21, No. 36. DHHS Pub. No. (PHS) 80-1914. Public Health Service. Hyattsville, Md. U.S. Government Printing Office, May 1980.
- ¹¹National Center for Health Statistics, S. Taffel: Prenatal care, United States, 1969-75. *Vital and Health Statistics*. Series 21, No. 33. DHEW Pub. No. (PHS) 78-1911. Public Health Service. Hyattsville, Md. U.S. Government Printing Office, Sept. 1978.
- ¹²National Center for Health Statistics, L. Querec: Apgar score in the United States, 1978. *Monthly Vital Statistics Report*. Vol. 30, No. 1 Supp. DHHS Pub. No. (PHS) 81-1120. Public Health Service. Hyattsville, Md., May 1981.
- ¹³National Center for Health Statistics, S. J. Ventura and R. L. Heuser: Births of Hispanic parentage, 1978. *Monthly Vital Statistics Report*. Vol. 29, No. 12 Supp. DHHS Pub. No. (PHS) 81-1120. Public Health Service. Hyattsville, Md., Mar. 1981.
- ¹⁴National Center for Health Statistics, S. J. Ventura: Births of Hispanic parentage, 1979. *Monthly Vital Statistics Report*. Vol. 31, No. 2 Supp. DHHS Pub. No. (PHS) 82-1120. Public Health Service. Hyattsville, Md., May 1982.
- ¹⁵National Center for Health Statistics, S. J. Ventura: Births of Hispanic parentage, 1980. *Monthly Vital Statistics Report*. Vol. 32, No. 6 Supp. DHHS Pub. No. (PHS) 83-1120. Public Health Service. Hyattsville, Md., Sept. 1983.
- ¹⁶National Center for Health Statistics, S. Taffel: Birth and fertility rates for States, United States, 1980. *Vital and Health Statistics*. Series 21, No. 42. DHHS Pub. No. (PHS) 84-1920. Public Health Service. Washington. U.S. Government Printing Office. In press.
- ¹⁷U.S. Bureau of the Census: Estimates of the population of the United States, by age, sex, and race: 1980 to 1983. *Current Population Reports*. Series P-25, No. 949. Washington. U.S. Government Printing Office, May 1984.
- ¹⁸U.S. Bureau of the Census: Estimates of the population of States, by age: July 1, 1981, to 1983. *Current Population Reports*. Series P-25, No. 951. Washington. U.S. Government Printing Office, May 1984.
- ¹⁹U.S. Bureau of the Census: Preliminary estimates of the population of the United States, by age, sex, and race, 1970 to 1981. *Current Population Reports*. Series P-25, No. 917. Washington. U.S. Government Printing Office, July 1982.

List of tables

1. Live births, birth rates, and fertility rates, by race of child: United States, specified years 1940-55 and each year 1960-82.....	12	16. Number and percent of births of low birth weight and number and ratio of births to unmarried women, by race of child: United States and each State, 1982	29
2. Live births by age of mother, live-birth order, and race of child: United States, 1982	13	17. Numbers, rates, and ratios of births to unmarried women, by age of mother and race of child: United States, 1982 ...	30
3. Birth rates by age of mother, live-birth order, and race of child: United States, 1982	15	18. Birth rates for unmarried women by age of mother and race of child: United States, 1970-82	31
4. Total fertility rates and birth rates by age of mother, by race of child: United States, 1970-82	16	19. Live births by interval since last live birth, live-birth order, and race of child: Total of 49 reporting States and the District of Columbia, 1982	33
5. Birth rates by live-birth order and race of child: United States, 1970-82	18	20. Live births by educational attainment of mother and father and race of child: Total of 47 reporting States and the District of Columbia, 1982	34
6. Live births by race of child, birth rates, and fertility rates: United States, each division and State, 1982	19	21. Live births by educational attainment of mother, age of mother, and race of child: Total of 47 reporting States and the District of Columbia, 1982	35
7. Live births by sex and sex ratio, by race of child: United States, 1970-82	20	22. Live births by age of mother and specified race of child: United States, 1982	36
8. Live births by race of child and observed and seasonally adjusted birth and fertility rates, by month: United States, 1982	21	23. Live births by birth weight and number and percent low birth weight, by specified race of child: United States, 1982	36
9. Average number of live births and index of occurrence, by day of week: United States, 1982	22	24. Live births by month of pregnancy prenatal care began, age of mother, and race of child: United States, 1982.....	37
10. Live births by attendant, place of delivery, and race of child: United States, 1982	22	25. Live births by month of pregnancy prenatal care began, number of prenatal visits, and race of child: Total of 49 reporting States and the District of Columbia, 1982	38
11. Live births by place of delivery, attendant, and race of child: United States, 1975-82	23	26. Live births by period of gestation, birth weight, and race of child: Total of 49 reporting States and the District of Columbia, 1982	39
12. Percent distribution of live births by place of delivery and attendant, according to race of child: United States, 1975-82.....	24	27. Live births by 1- and 5-minute Apgar scores and race of child: Total of reporting States, 1982.....	40
13. Live births by age of father, age of mother, and race of child: United States, 1982	25	28. Live births by 1- and 5-minute Apgar scores and race of child: Total of 46 reporting States, 1982	41
14. Birth rates by age of father and race of child: United States, 1970-82.....	26		
15. Number and percent low birth weight and live births by birth weight, by age of mother and race of child: United States, 1982.....	27		

Table 1. Live births, birth rates, and fertility rates, by race of child: United States, specified years 1940–55 and each year 1960–82

[Birth rates per 1,000 population in specified group. Fertility rates per 1,000 women aged 15–44 years in specified group. Population enumerated as of April 1 for census years and estimated as of July 1 for all other years. Beginning with 1970, excludes births to nonresidents of the United States]

Year	Number				Birth rate				Fertility rate			
	All races	White	All other		All races	White	All other		All races	White	All other	
			Total	Black			Total	Black			Total	Black
Registered births												
1982 ¹	3,680,537	2,942,054	738,483	592,641	15.9	14.9	21.9	21.4	67.3	63.9	85.5	84.1
1981 ¹	3,629,238	2,908,669	720,569	587,797	15.8	14.8	22.0	21.6	67.4	63.9	86.4	85.4
1980 ¹	3,612,258	2,898,732	713,526	589,616	15.9	14.9	22.5	22.1	68.4	64.7	88.6	88.1
1979 ¹	3,494,398	2,808,420	685,978	577,855	15.6	14.5	22.2	22.0	67.2	63.4	88.5	88.3
1978 ¹	3,333,279	2,681,116	652,163	551,540	15.0	14.0	21.6	21.3	65.5	61.7	87.0	86.7
1977 ¹	3,326,632	2,691,070	635,562	544,221	15.1	14.1	21.6	21.4	66.8	63.2	87.7	88.1
1976 ¹	3,167,788	2,567,614	600,174	514,479	14.6	13.6	20.8	20.5	65.0	61.5	85.8	85.8
1975 ¹	3,144,198	2,551,996	592,202	511,581	14.6	13.6	21.0	20.7	66.0	62.5	87.7	87.9
1974 ¹	3,159,958	2,575,792	584,166	507,162	14.8	13.9	21.2	20.8	67.8	64.2	89.8	89.7
1973 ¹	3,136,965	2,551,030	585,935	512,597	14.8	13.8	21.7	21.4	68.8	64.9	93.4	93.6
1972 ¹	3,258,411	2,655,558	602,853	531,329	15.6	14.5	22.8	22.5	73.1	68.9	99.5	99.9
1971 ²	3,555,970	2,919,746	636,224	564,960	17.2	16.1	24.6	24.4	81.6	77.3	109.1	109.7
1970 ²	3,731,386	3,091,264	640,122	572,362	18.4	17.4	25.1	25.3	87.9	84.1	113.0	115.4
1969 ²	3,600,206	2,993,614	606,592	543,132	17.9	16.9	24.5	24.4	86.1	82.2	111.6	112.1
1968 ²	3,501,564	2,912,224	589,340	531,152	17.6	16.6	24.2	24.2	85.2	81.3	111.9	112.7
1967 ³	3,520,959	2,922,502	598,457	543,976	17.8	16.8	25.0	25.1	87.2	82.8	117.1	118.5
1966 ²	3,606,274	2,993,230	613,044	558,244	18.4	17.4	26.1	26.2	90.8	86.2	123.5	124.7
1965 ²	3,760,358	3,123,860	636,498	581,126	19.4	18.3	27.6	27.7	96.3	91.3	131.9	133.2
1964 ²	4,027,490	3,369,160	658,330	607,556	21.1	20.0	29.2	29.5	104.7	99.8	140.0	142.6
1963 ^{2,4}	4,098,020	3,326,344	638,928	580,658	21.7	20.7	29.7	---	108.3	103.6	143.7	---
1962 ^{2,4}	4,167,362	3,394,068	641,580	584,610	22.4	21.4	30.5	---	112.0	107.5	147.8	---
1961 ²	4,268,326	3,600,864	667,462	611,072	23.3	22.2	31.6	---	117.1	112.3	153.0	---
1960 ²	4,257,850	3,600,744	657,106	602,264	23.7	22.7	32.1	31.9	118.0	113.2	153.6	153.5
Births adjusted for underregistration												
1955	4,097,000	3,485,000	613,000	---	25.0	23.8	34.5	---	118.3	113.7	154.3	---
1950	3,632,000	3,108,000	524,000	---	24.1	23.0	33.3	---	106.2	102.3	137.3	---
1945	2,858,000	2,471,000	388,000	---	20.4	19.7	26.5	---	85.9	83.4	106.0	---
1940	2,559,000	2,199,000	360,000	---	19.4	18.6	26.7	---	79.9	77.1	102.4	---

¹Based on 100 percent of births in selected States and on a 50-percent sample of births in all other States; see Technical notes.

²Based on a 50-percent sample of births.

³Based on a 20- to 50-percent sample of births.

⁴Figures by race exclude data for New Jersey.

Table 2. Live births by age of mother, live-birth order, and race of child: United States, 1982

[Based on 100 percent of births in selected States and on a 50-percent sample of births in all other States; see Technical notes. Live-birth order refers to number of children born alive to mother]

Live-birth order and race of child	Age of mother													
	All ages	Under 15 years	15-19 years						20-24 years	25-29 years	30-34 years	35-39 years	40-44 years	45-49 years
			Total	15 years	16 years	17 years	18 years	19 years						
All races														
Total	3,680,537	9,773	513,758	25,091	57,348	98,723	144,937	187,659	1,205,979	1,151,934	605,273	167,920	24,664	1,236
First child	1,555,627	9,327	395,507	23,302	51,214	82,043	110,042	128,906	588,979	396,620	136,814	25,799	2,498	83
Second child	1,194,238	255	95,865	1,364	5,135	14,065	28,830	46,471	419,935	426,016	208,048	40,661	3,362	96
Third child	557,164	20	15,708	75	342	1,582	4,381	9,328	142,695	212,368	142,783	39,437	4,043	110
Fourth child	207,032	-	2,071	2	17	140	491	1,421	36,681	74,059	64,252	25,954	3,887	128
Fifth child	78,486	-	246	-	2	14	50	180	8,736	24,495	27,006	14,770	3,096	137
Sixth child	33,754	-	34	-	1	-	9	24	1,927	8,502	12,463	8,390	2,324	114
Seventh child	16,038	-	5	-	-	1	1	3	427	2,860	5,863	5,071	1,678	134
Eighth child and over	18,017	-	43	-	-	-	11	32	239	1,551	5,100	6,990	3,666	428
Not stated	20,181	171	4,279	348	637	878	1,122	1,294	6,360	5,463	2,944	848	110	6
White														
Total	2,942,054	4,153	357,948	13,346	35,629	66,894	102,954	139,125	958,509	961,053	503,847	136,664	19,027	853
First child	1,266,455	4,021	285,002	12,668	32,806	57,911	81,672	99,945	490,901	345,005	117,797	21,673	2,002	54
Second child	974,259	92	61,670	534	2,447	7,884	18,337	32,468	335,179	363,521	177,484	33,605	2,637	71
Third child	435,067	9	8,145	28	115	637	2,113	5,252	100,592	170,909	119,252	32,881	3,190	89
Fourth child	151,644	-	845	1	4	45	174	621	21,599	53,837	51,015	21,125	3,122	101
Fifth child	54,634	-	83	-	-	1	18	64	4,394	16,034	19,961	11,659	2,394	109
Sixth child	22,846	-	11	-	-	-	5	6	877	4,989	8,746	6,361	1,782	80
Seventh child	10,745	-	2	-	-	-	1	1	175	1,506	3,955	3,767	1,258	82
Eighth child and over	11,854	-	29	-	-	-	8	21	130	770	3,197	4,907	2,557	264
Not stated	14,550	31	2,161	115	257	416	626	747	4,662	4,482	2,440	686	85	3
All other														
Total	738,483	5,620	155,810	11,745	21,719	31,829	41,983	48,534	247,470	190,881	101,426	31,256	5,637	383
First child	289,172	5,306	110,505	10,634	18,408	24,132	28,370	28,961	98,078	51,615	19,017	4,126	496	29
Second child	219,979	163	34,195	830	2,688	6,181	10,493	14,003	84,756	62,495	30,564	7,056	725	25
Third child	122,097	11	7,563	47	227	945	2,268	4,076	42,103	41,459	23,531	6,556	853	21
Fourth child	55,388	-	1,226	1	13	95	317	800	15,082	20,222	13,237	4,829	765	27
Fifth child	23,852	-	163	-	2	13	32	116	4,342	8,461	7,045	3,111	702	28
Sixth child	10,908	-	23	-	1	-	4	18	1,050	3,513	3,717	2,029	542	34
Seventh child	5,293	-	3	-	-	1	-	2	252	1,354	1,908	1,304	420	52
Eighth child and over	6,163	-	14	-	-	-	3	11	109	781	1,903	2,083	1,109	164
Not stated	5,631	140	2,118	233	380	462	496	547	1,698	981	504	162	25	3

Table 2. Live births by age of mother, live-birth order, and race of child: United States, 1982—Con.

[Based on 100 percent of births in selected States and on a 50-percent sample of births in all other States; see Technical notes. Live-birth order refers to number of children born alive to mother]

Live-birth order and race of child	Age of mother													
	All ages	Under 15 years	15–19 years						20–24 years	25–29 years	30–34 years	35–39 years	40–44 years	45–49 years
			Total	15 years	16 years	17 years	18 years	19 years						
Black														
Total	592,641	5,395	140,534	11,093	20,235	28,954	37,664	42,588	207,640	143,748	69,781	21,341	3,966	236
First child	230,425	5,089	99,035	10,029	17,070	21,766	25,193	24,977	79,473	33,370	10,811	2,363	267	17
Second child	174,010	157	31,110	791	2,566	5,760	9,554	12,439	71,532	47,257	19,297	4,210	439	8
Third child	99,685	11	7,019	47	214	883	2,109	3,766	36,549	33,815	17,323	4,385	569	14
Fourth child	45,759	-	1,144	1	12	86	299	746	13,311	16,745	10,357	3,612	568	22
Fifth child	19,711	-	160	-	2	13	31	114	3,959	6,995	5,620	2,447	511	19
Sixth child	8,884	-	23	-	1	-	4	18	988	2,918	2,920	1,569	443	23
Seventh child	4,255	-	3	-	-	1	-	2	232	1,156	1,507	1,000	323	34
Eighth child and over	4,917	-	10	-	-	-	3	7	93	686	1,559	1,638	833	98
Not stated	4,995	138	2,030	225	370	445	471	519	1,503	806	387	117	13	1

Table 3. Birth rates by age of mother, live-birth order, and race of child: United States, 1982

[Based on 100 percent of births in selected States and on a 50-percent sample of births in all other States; see Technical notes. Rates are live births per 1,000 women in specified age and racial groups. Live-birth order refers to number of children born alive to mother]

Live-birth order and race of child	Age of mother												
	15-44 years ¹	10-14 years	15-19 years					20-24 years	25-29 years	30-34 years	35-39 years	40-44 years	45-49 years
			Total	15-17 years	18-19 years								
All races	67.3	1.1	52.9	32.4	80.7	111.3	111.0	64.2	21.1	3.9	0.2		
First child	28.6	1.1	41.0	28.3	58.4	54.7	38.4	14.6	3.3	0.4	0.0		
Second child	22.0	0.0	9.9	3.7	18.4	39.0	41.2	22.2	5.1	0.5	0.0		
Third child	10.2	0.0	1.6	0.4	3.3	13.2	20.6	15.2	5.0	0.6	0.0		
Fourth child	3.8	-	0.2	0.0	0.5	3.4	7.2	6.9	3.3	0.6	0.0		
Fifth child	1.4	-	0.0	0.0	0.1	0.8	2.4	2.9	1.9	0.5	0.0		
Sixth and seventh child	0.9	-	0.0	0.0	0.0	0.2	1.1	2.0	1.7	0.6	0.0		
Eighth child and over	0.3	-	0.0	-	0.0	0.0	0.2	0.5	0.9	0.6	0.1		
White	63.9	0.6	44.6	25.2	70.8	105.9	110.3	63.3	20.0	3.5	0.2		
First child	27.7	0.6	35.8	22.5	53.5	54.5	39.8	14.9	3.2	0.4	0.0		
Second child	21.3	0.0	7.7	2.4	15.0	37.2	41.9	22.4	4.9	0.5	0.0		
Third child	9.5	0.0	1.0	0.2	2.2	11.2	19.7	15.1	4.8	0.6	0.0		
Fourth child	3.3	-	0.1	0.0	0.2	2.4	6.2	6.4	3.1	0.6	0.0		
Fifth child	1.2	-	0.0	0.0	0.0	0.5	1.8	2.5	1.7	0.4	0.0		
Sixth and seventh child	0.7	-	0.0	-	0.0	0.1	0.7	1.6	1.5	0.6	0.0		
Eighth child and over	0.3	-	0.0	-	0.0	0.0	0.1	0.4	0.7	0.5	0.1		
All other	85.5	3.6	91.5	65.6	128.2	139.3	114.9	69.0	28.0	6.2	0.5		
First child	33.8	3.5	65.8	54.3	82.2	55.6	31.2	13.0	3.7	0.5	0.0		
Second child	25.6	0.1	20.4	9.9	35.1	48.0	37.8	20.9	6.4	0.8	0.0		
Third child	14.2	0.0	4.5	1.2	9.1	23.9	25.1	16.1	5.9	0.9	0.0		
Fourth child	6.4	-	0.7	0.1	1.6	8.5	12.2	9.0	4.3	0.8	0.0		
Fifth child	2.8	-	0.1	0.0	0.2	2.5	5.1	4.8	2.8	0.8	0.0		
Sixth and seventh child	1.9	-	0.0	0.0	0.0	0.7	2.9	3.8	3.0	1.1	0.1		
Eighth child and over	0.7	-	0.0	-	0.0	0.1	0.5	1.3	1.9	1.2	0.2		
Black	84.1	4.1	97.0	71.2	133.3	139.1	106.9	60.4	24.4	5.4	0.4		
First child	33.0	4.0	69.3	58.7	84.4	53.6	25.0	9.4	2.7	0.4	0.0		
Second child	24.9	0.1	21.8	11.0	37.0	48.3	35.3	16.8	4.8	0.6	0.0		
Third child	14.2	0.0	4.9	1.4	9.9	24.7	25.3	15.1	5.0	0.8	0.0		
Fourth child	6.5	-	0.8	0.1	1.8	9.0	12.5	9.0	4.2	0.8	0.0		
Fifth child	2.8	-	0.1	0.0	0.2	2.7	5.2	4.9	2.8	0.7	0.0		
Sixth and seventh child	1.9	-	0.0	0.0	0.0	0.8	3.0	3.9	3.0	1.1	0.1		
Eighth child and over	0.7	-	0.0	-	0.0	0.1	0.5	1.4	1.9	1.1	0.2		

¹Rates computed by relating total births, regardless of age of mother, to women aged 15-44 years.

Table 4. Total fertility rates and birth rates by age of mother, by race of child: United States, 1970-82

[Total fertility rates are sums of birth rates for 5-year age groups multiplied by 5. Birth rates are live births per 1,000 women in specified group, enumerated as of April 1 for 1970 and 1980 and estimated as of July 1 for all other years]

Year and race of child	Total fertility rate	Age of mother									
		10-14 years	15-19 years			20-24 years	25-29 years	30-34 years	35-39 years	40-44 years	45-49 years
			Total	15-17 years	18-19 years						
All races											
1982 ¹	1,828.5	1.1	52.9	32.4	80.7	111.3	111.0	64.2	21.1	3.9	0.2
1981 ¹	1,815.0	1.1	52.7	32.1	81.7	111.8	112.0	61.4	20.0	3.8	0.2
1980 ¹	1,839.5	1.1	53.0	32.5	82.1	115.1	112.9	61.9	19.8	3.9	0.2
1979 ¹	1,808.0	1.2	52.3	32.3	81.3	112.8	111.4	60.3	19.5	3.9	0.2
1978 ¹	1,760.0	1.2	51.5	32.2	79.8	109.9	108.5	57.8	19.0	3.9	0.2
1977 ¹	1,789.5	1.2	52.8	33.9	80.9	112.9	111.0	56.4	19.2	4.2	0.2
1976 ¹	1,738.0	1.2	52.8	34.1	80.5	110.3	106.2	53.6	19.0	4.3	0.2
1975 ¹	1,774.0	1.3	55.6	36.1	85.0	113.0	108.2	52.3	19.5	4.6	0.3
1974 ¹	1,835.0	1.2	57.5	37.3	88.7	117.7	111.5	53.8	20.2	4.8	0.3
1973 ¹	1,879.0	1.2	59.3	38.5	91.2	119.7	112.2	55.6	22.1	5.4	0.3
1972 ¹	2,010.0	1.2	61.7	39.0	96.9	130.2	117.7	59.8	24.8	6.2	0.4
1971 ²	2,266.5	1.1	64.5	38.2	105.3	150.1	134.1	67.3	28.7	7.1	0.4
1970 ²	2,480.0	1.2	68.3	38.8	114.7	167.8	145.1	73.3	31.7	8.1	0.5
White											
1982 ¹	1,742.0	0.6	44.6	25.2	70.8	105.9	110.3	63.3	20.0	3.5	0.2
1981 ¹	1,726.0	0.5	44.6	25.1	71.9	106.3	111.3	60.2	18.7	3.4	0.2
1980 ¹	1,748.5	0.6	44.7	25.2	72.1	109.5	112.4	60.4	18.5	3.4	0.2
1979 ¹	1,715.5	0.6	43.7	24.7	71.0	107.0	110.8	59.0	18.3	3.5	0.2
1978 ¹	1,667.5	0.6	42.9	24.9	69.4	104.1	107.9	56.6	17.7	3.5	0.2
1977 ¹	1,703.0	0.6	44.1	26.1	70.5	107.7	110.9	55.3	18.0	3.8	0.2
1976 ¹	1,652.0	0.6	44.1	26.3	70.2	105.3	105.9	52.6	17.8	3.9	0.2
1975 ¹	1,686.0	0.6	46.4	28.0	74.0	108.2	108.1	51.3	18.2	4.2	0.2
1974 ¹	1,748.5	0.6	47.9	28.7	77.3	113.0	111.8	52.9	18.9	4.4	0.2
1973 ¹	1,783.0	0.6	49.0	29.2	79.3	114.4	112.3	54.4	20.7	4.9	0.3
1972 ¹	1,906.5	0.5	51.0	29.3	84.3	124.8	117.4	58.4	23.3	5.6	0.3
1971 ²	2,160.5	0.5	53.6	28.5	92.3	144.9	134.0	65.4	26.9	6.4	0.4
1970 ²	2,385.0	0.5	57.4	29.2	101.5	163.4	145.9	71.9	30.0	7.5	0.4
All other											
1982 ¹	2,265.0	3.6	91.5	65.6	128.2	139.3	114.9	69.0	28.0	6.2	0.5
1981 ¹	2,274.5	3.6	91.8	65.2	130.8	140.8	115.9	68.5	27.6	6.3	0.4
1980 ¹	2,323.0	3.9	94.6	68.3	133.2	145.0	115.5	70.8	27.9	6.5	0.4
1979 ¹	2,309.5	4.1	96.5	70.5	134.9	144.3	114.6	68.3	27.3	6.4	0.4
1978 ¹	2,264.5	4.0	96.0	70.4	134.4	142.1	111.9	65.2	26.9	6.4	0.4
1977 ¹	2,278.5	4.3	99.5	74.8	136.8	142.3	111.5	63.4	27.3	6.9	0.5
1976 ¹	2,222.5	4.3	99.9	75.5	137.2	138.9	107.6	59.5	26.9	6.9	0.5
1975 ¹	2,276.0	4.7	106.4	80.5	146.1	141.0	108.7	58.8	27.6	7.5	0.5
1974 ¹	2,338.5	4.6	111.3	84.9	153.1	145.5	109.5	59.9	28.8	7.6	0.5
1973 ¹	2,443.0	5.0	117.5	90.5	160.9	151.6	111.2	63.2	30.9	8.6	0.6
1972 ¹	2,627.5	4.7	123.8	93.8	173.3	163.4	119.3	68.9	34.8	9.9	0.7
1971 ²	2,919.5	4.7	128.5	94.0	185.6	184.0	134.6	79.3	40.2	11.7	0.9
1970 ²	3,066.7	4.8	133.4	95.2	195.4	196.8	140.1	82.5	42.2	12.6	0.9

See footnotes at end of table.

Table 4. Total fertility rates and birth rates by age of mother, by race of child: United States, 1970-82—Con.

[Total fertility rates are sums of birth rates for 5-year age groups multiplied by 5. Birth rates are live births per 1,000 women in specified group, enumerated as of April 1 for 1970 and 1980 and estimated as of July 1 for all other years]

Year and race of child	Total fertility rate	Age of mother									
		10-14 years	15-19 years			20-24 years	25-29 years	30-34 years	35-39 years	40-44 years	45-49 years
			Total	15-17 years	18-19 years						
Black											
1982 ¹	2,188.5	4.1	97.0	71.2	133.3	139.1	106.9	60.4	24.4	5.4	0.4
1981 ¹	2,206.0	4.1	97.1	70.6	135.9	141.2	108.3	60.4	24.2	5.6	0.3
1980 ¹	2,266.0	4.3	100.0	73.6	138.8	146.3	109.1	62.9	24.5	5.8	0.3
1979 ¹	2,263.2	4.6	101.7	75.7	140.4	146.3	108.2	60.7	24.7	6.1	0.4
1978 ¹	2,218.0	4.4	100.9	75.0	139.7	143.8	105.4	58.3	24.3	6.1	0.4
1977 ¹	2,251.0	4.7	104.7	79.6	142.9	144.4	106.4	57.5	25.4	6.6	0.5
1976 ¹	2,187.0	4.7	104.9	80.3	142.5	140.5	101.6	53.6	24.8	6.8	0.5
1975 ¹	2,243.0	5.1	111.8	85.6	152.4	142.8	102.2	53.1	25.6	7.5	0.5
1974 ¹	2,298.5	5.0	116.5	90.0	158.7	146.7	102.2	54.1	27.0	7.6	0.6
1973 ¹	2,411.0	5.4	123.1	96.0	166.6	153.1	103.9	58.1	29.4	8.6	0.6
1972 ¹	2,601.0	5.1	129.8	99.5	179.5	165.0	112.4	64.0	33.4	9.8	0.7
1971 ²	2,902.0	5.1	134.5	99.4	192.6	186.6	128.0	74.8	38.9	11.6	0.9
1970 ²	3,098.7	5.2	147.7	101.4	204.9	202.7	136.3	79.6	41.9	12.5	1.0

¹Based on 100 percent of births in selected States and on a 50-percent sample of births in all other States; see Technical notes.

²Based on a 50-percent sample of births.

Table 5. Birth rates by live-birth order and race of child: United States, 1970-82

[Rates are live births per 1,000 women aged 15-44 years, enumerated as of April 1 for 1970 and 1980 and estimated as of July 1 for all other years. Figures for live-birth order not stated are distributed]

Year and race of child	Total	Live-birth order						
		1	2	3	4	5	6 and 7	8 and over
All races								
1982 ¹	67.3	28.6	22.0	10.2	3.8	1.4	0.9	0.3
1981 ¹	67.4	29.0	21.6	10.2	3.8	1.5	0.9	0.4
1980 ¹	68.4	29.5	21.8	10.3	3.9	1.5	1.0	0.4
1979 ¹	67.2	28.6	21.6	10.1	3.8	1.5	1.0	0.4
1978 ¹	65.5	27.8	21.1	9.8	3.8	1.5	1.0	0.4
1977 ¹	66.8	28.2	21.6	10.0	3.8	1.6	1.1	0.5
1976 ¹	65.0	27.5	20.8	9.5	3.8	1.6	1.2	0.6
1975 ¹	66.0	28.1	20.9	9.4	3.9	1.7	1.3	0.7
1974 ¹	67.8	28.7	21.4	9.5	4.1	1.9	1.5	0.8
1973 ¹	68.8	28.6	21.0	9.8	4.5	2.2	1.8	0.9
1972 ¹	73.1	29.8	21.4	10.6	5.3	2.6	2.2	1.2
1971 ²	81.6	32.0	23.1	12.5	6.4	3.3	2.8	1.5
1970 ²	87.9	34.2	24.2	13.6	7.2	3.8	3.2	1.8
White								
1982 ¹	63.9	27.7	21.3	9.5	3.3	1.2	0.7	0.3
1981 ¹	63.9	28.1	20.9	9.4	3.3	1.2	0.8	0.3
1980 ¹	64.7	28.4	21.0	9.5	3.4	1.3	0.8	0.3
1979 ¹	63.4	27.4	20.8	9.4	3.4	1.3	0.8	0.3
1978 ¹	61.7	26.6	20.2	9.2	3.3	1.3	0.8	0.3
1977 ¹	63.2	26.9	20.9	9.4	3.4	1.4	0.9	0.4
1976 ¹	61.5	26.3	20.2	8.9	3.4	1.4	1.0	0.4
1975 ¹	62.5	26.7	20.3	8.8	3.5	1.5	1.1	0.5
1974 ¹	64.2	27.2	20.8	9.0	3.8	1.7	1.2	0.6
1973 ¹	64.9	27.0	20.4	9.2	4.1	1.9	1.5	0.7
1972 ¹	68.9	28.1	20.9	10.1	4.9	2.3	1.8	0.8
1971 ²	77.3	30.5	22.5	12.0	6.0	3.0	2.3	1.0
1970 ²	84.1	32.9	23.7	13.3	6.8	3.4	2.7	1.2
All other								
1982 ¹	85.5	33.8	25.6	14.2	6.4	2.8	1.9	0.7
1981 ¹	86.4	34.3	25.9	14.2	6.4	2.8	2.0	0.8
1980 ¹	88.6	35.6	26.2	14.4	6.5	2.9	2.1	0.9
1979 ¹	88.5	35.7	26.2	14.2	6.4	2.9	2.1	1.0
1978 ¹	87.0	35.0	25.8	13.8	6.3	2.9	2.2	1.1
1977 ¹	87.7	35.6	25.7	13.5	6.2	3.0	2.4	1.3
1976 ¹	85.8	35.2	24.7	12.8	6.0	3.0	2.5	1.5
1975 ¹	87.7	36.7	24.6	12.6	6.1	3.1	2.8	1.8
1974 ¹	89.8	37.7	24.7	12.5	6.3	3.3	3.1	2.1
1973 ¹	93.4	38.8	24.4	13.0	6.9	3.9	3.7	2.6
1972 ¹	99.5	40.6	25.0	13.7	7.7	4.6	4.6	3.4
1971 ²	109.1	41.6	26.8	15.5	9.0	5.6	5.9	4.6
1970 ²	113.0	42.4	26.9	15.9	9.7	6.1	6.7	5.3
Black								
1982 ¹	84.1	33.0	24.9	14.2	6.5	2.8	1.9	0.7
1981 ¹	85.4	33.8	25.2	14.3	6.6	2.9	2.0	0.8
1980 ¹	88.1	35.2	25.7	14.5	6.7	3.0	2.1	0.9
1979 ¹	88.3	35.3	25.8	14.4	6.6	3.0	2.2	1.0
1978 ¹	86.7	34.6	25.4	13.9	6.5	3.0	2.3	1.1
1977 ¹	88.1	35.6	25.5	13.6	6.4	3.1	2.4	1.4
1976 ¹	85.8	35.2	24.4	12.9	6.2	3.1	2.6	1.5
1975 ¹	87.9	36.9	24.2	12.6	6.3	3.2	2.9	1.9
1974 ¹	89.7	37.7	24.2	12.6	6.5	3.4	3.3	2.2
1973 ¹	93.6	38.9	24.0	13.0	7.0	4.0	3.9	2.8
1972 ¹	99.9	40.7	24.6	13.7	7.9	4.7	4.8	3.6
1971 ²	109.7	41.7	26.6	15.5	9.2	5.7	6.2	4.8
1970 ²	115.4	43.3	27.1	16.1	10.0	6.4	7.0	5.6

¹Based on 100 percent of births in selected States and on a 50-percent sample of births in all other States; see Technical notes.

²Based on a 50-percent sample of births.

Table 6. Live births by race of child, birth rates, and fertility rates: United States, each division and State, 1982

[By place of residence. Based on 100 percent of births in selected States and on a 50-percent sample of births in all other States; see Technical notes. Birth rates per 1,000 estimated population in each area; fertility rates per 1,000 women aged 15-44 years estimated in each area]

Division and State	Number			Birth rate	Fertility rate
	All races ¹	White	Black		
United States.....	3,680,537	2,942,054	592,641	15.9	67.3
New England.....	167,590	152,686	11,543	13.5	56.4
Maine.....	16,666	16,336	95	14.7	64.1
New Hampshire.....	14,087	13,850	101	14.9	61.2
Vermont.....	8,028	7,957	28	15.4	63.2
Massachusetts.....	75,856	68,575	5,490	13.2	54.4
Rhode Island.....	12,512	11,232	814	13.1	56.4
Connecticut.....	40,441	34,736	5,015	12.9	54.6
Middle Atlantic.....	507,874	401,551	94,178	13.8	59.1
New York.....	247,297	186,174	53,619	14.1	59.3
New Jersey.....	98,668	76,453	19,699	13.3	56.8
Pennsylvania.....	161,909	138,924	20,860	13.6	60.2
East North Central.....	644,997	536,285	98,025	15.5	65.7
Ohio.....	164,754	140,204	22,784	15.3	65.2
Indiana.....	83,948	74,228	9,045	15.3	65.1
Illinois.....	183,601	140,348	39,030	16.0	68.0
Michigan.....	138,322	113,783	22,270	15.2	63.2
Wisconsin.....	74,372	67,722	4,896	15.7	67.2
West North Central.....	283,347	254,758	19,287	16.3	71.5
Minnesota.....	68,498	63,781	1,706	16.6	69.8
Iowa.....	44,738	43,035	1,033	15.4	68.7
Missouri.....	76,804	64,354	11,544	15.5	67.8
North Dakota.....	12,622	11,489	129	18.8	84.7
South Dakota.....	12,860	10,934	87	18.5	85.7
Nebraska.....	26,961	24,948	1,346	17.0	75.1
Kansas.....	40,864	36,217	3,442	17.0	75.4
South Atlantic.....	563,055	389,704	163,900	14.7	62.3
Delaware.....	9,180	7,025	2,053	15.3	62.0
Maryland.....	63,802	42,929	19,145	14.9	59.5
District of Columbia.....	9,307	1,726	7,475	14.9	55.1
Virginia.....	81,151	59,910	19,242	14.8	59.8
West Virginia.....	27,283	26,018	1,128	13.9	62.3
North Carolina.....	85,954	58,188	25,421	14.3	59.7
South Carolina.....	51,647	30,741	20,435	16.0	66.2
Georgia.....	90,192	56,898	32,384	16.0	64.9
Florida.....	144,539	106,269	36,617	13.8	64.5
East South Central.....	230,202	165,828	62,488	15.5	66.4
Kentucky.....	56,828	51,160	5,197	15.4	66.2
Tennessee.....	67,063	51,735	14,699	14.4	60.8
Alabama.....	60,340	38,884	21,078	15.3	65.7
Mississippi.....	45,971	24,049	21,514	17.9	78.3
West South Central.....	476,519	376,671	85,527	18.9	79.9
Arkansas.....	35,380	26,313	8,657	15.3	69.1
Louisiana.....	84,599	52,211	31,067	19.3	80.3
Oklahoma.....	58,799	46,988	5,362	18.2	80.2
Texas.....	297,741	251,159	40,441	19.4	81.3
Mountain.....	236,516	211,575	7,769	19.6	82.4
Montana.....	14,550	12,855	69	18.1	78.6
Idaho.....	19,616	18,958	110	20.1	88.8
Wyoming.....	11,069	10,540	108	21.7	92.2
Colorado.....	54,803	50,173	2,752	17.8	70.1
New Mexico.....	27,730	23,047	734	20.3	85.3
Arizona.....	52,653	44,264	2,315	18.2	79.2
Utah.....	41,543	39,621	278	26.4	115.4
Nevada.....	14,552	12,117	1,403	16.6	68.3
Pacific.....	570,437	452,996	49,924	17.2	71.5
Washington.....	69,497	60,980	3,141	16.3	67.9
Oregon.....	41,040	37,943	980	15.4	65.1
California.....	429,897	341,593	44,609	17.4	71.9
Alaska.....	11,296	8,001	500	25.4	98.2
Hawaii.....	18,707	4,479	694	18.8	78.9

¹Includes races other than white and black.

Table 7. Live births by sex and sex ratio, by race of child: United States, 1970-82

Year	All races			White			All other					
			Males per 1,000 females			Males per 1,000 females	Total			Black		
	Male	Female		Male	Female		Male	Female	Males per 1,000 females	Male	Female	Males per 1,000 females
1982 ¹	1,885,676	1,794,861	1,051	1,509,704	1,432,350	1,054	375,972	362,511	1,037	301,121	291,520	1,033
1981 ¹	1,860,272	1,768,966	1,052	1,494,437	1,414,232	1,057	365,835	354,734	1,031	297,864	289,933	1,027
1980 ¹	1,852,616	1,759,642	1,053	1,490,140	1,408,592	1,058	362,476	351,050	1,033	299,033	290,583	1,029
1979 ¹	1,791,267	1,703,131	1,052	1,442,981	1,365,439	1,057	348,286	337,692	1,031	293,013	284,842	1,029
1978 ¹	1,709,394	1,623,885	1,053	1,378,222	1,302,894	1,058	331,172	320,991	1,032	279,598	271,942	1,028
1977 ¹	1,705,916	1,620,716	1,053	1,383,440	1,307,630	1,058	322,476	313,086	1,030	275,556	268,665	1,026
1976 ¹	1,624,436	1,543,352	1,053	1,319,717	1,247,897	1,058	304,719	295,455	1,031	260,661	253,818	1,027
1975 ¹	1,613,135	1,531,063	1,054	1,312,308	1,239,688	1,059	300,827	291,375	1,032	259,610	251,971	1,030
1974 ¹	1,622,114	1,537,844	1,055	1,325,019	1,250,773	1,059	297,095	287,071	1,035	257,277	249,885	1,030
1973 ¹	1,608,326	1,528,639	1,052	1,311,032	1,239,998	1,057	297,294	288,641	1,030	259,877	252,720	1,028
1972 ¹	1,669,927	1,588,484	1,051	1,364,578	1,290,980	1,057	305,349	297,504	1,026	268,842	262,487	1,024
1971 ²	1,822,910	1,733,060	1,052	1,499,958	1,419,788	1,056	322,952	313,272	1,031	286,430	278,530	1,028
1970 ²	1,915,378	1,816,008	1,055	1,590,140	1,501,124	1,059	325,238	314,884	1,033	290,508	281,854	1,031

¹Based on 100 percent of births in selected States and on a 50-percent sample of births in all other States; see Technical notes.

²Based on a 50-percent sample of births.

Table 8. Live births by race of child and observed and seasonally adjusted birth and fertility rates, by month: United States, 1982

[Based on 100 percent of births in selected States and on a 50-percent sample of births in all other States; see Technical notes. Rates on an annual basis per 1,000 population for specified month. Birth rates based on the total population. Fertility rates based on women aged 15-44 years]

Month	Number				Observed		Seasonally adjusted	
	All races	White	All other		Birth rate	Fertility rate	Birth rate	Fertility rate
			Total	Black				
Total	3,680,537	2,942,054	738,483	592,641	15.9	67.3
January	297,823	235,869	61,954	50,087	15.2	64.6	15.8	67.1
February	276,899	220,555	56,344	45,738	15.6	66.4	15.9	67.5
March	305,811	246,524	59,287	47,414	15.6	66.2	15.9	67.6
April	291,446	236,413	55,033	43,452	15.3	65.1	16.0	68.1
May	306,232	247,534	58,698	46,725	15.6	66.1	16.1	68.4
June	307,842	246,871	60,971	48,950	16.2	68.6	16.3	69.1
July	328,528	261,915	66,613	53,740	16.7	70.8	15.9	67.3
August	329,182	261,273	67,909	54,834	16.7	70.9	15.8	66.9
September	326,619	260,573	66,046	52,962	17.1	72.6	15.9	67.6
October	313,982	250,986	62,996	50,505	15.9	67.5	15.8	67.0
November	295,992	235,537	60,455	48,456	15.5	66.3	15.8	67.6
December	300,181	238,004	62,177	49,778	15.2	64.4	15.5	65.6

Table 9. Average number of live births and index of occurrence, by day of week: United States, 1982

<i>Day of week</i>	<i>Average number of births</i>	<i>Index of occurrence¹</i>
Total	10,084	100.0
Sunday	8,664	85.9
Monday	10,438	103.5
Tuesday	10,854	107.6
Wednesday	10,627	105.4
Thursday	10,518	104.3
Friday	10,517	104.3
Saturday	8,957	88.8

¹Index is the ratio of the average number of births on a given day of the week to the average daily number of births for the year multiplied by 100.

Table 10. Live births by attendant, place of delivery, and race of child: United States, 1982

[Based on 100 percent of births in selected States and on a 50-percent sample of births in all other States; see Technical notes]

<i>Place of delivery and race of child</i>	<i>All births</i>	<i>Attendant</i>			
		<i>Physician</i>	<i>Midwife</i>	<i>Other</i>	<i>Unspecified</i>
All races¹					
Total	3,680,537	3,570,940	77,437	23,791	8,369
In hospital ²	3,642,196	3,560,644	63,062	11,936	6,554
Not in hospital	38,086	10,240	14,316	11,748	1,782
Not specified	255	56	59	107	33
White					
Total	2,942,054	2,861,409	55,946	18,179	6,520
In hospital ²	2,909,424	2,853,427	42,684	8,197	5,116
Not in hospital	32,444	7,938	13,218	9,912	1,376
Not specified	186	44	44	70	28
Black					
Total	592,641	570,811	17,039	3,511	1,280
In hospital ²	588,276	568,943	16,162	2,147	1,024
Not in hospital	4,339	1,860	874	1,354	251
Not specified	26	8	3	10	5

¹Includes races other than white and black.

²Includes births occurring en route to or on arrival at hospital.

Table 11. Live births by place of delivery, attendant, and race of child: United States, 1975-82

[Based on 100 percent of births in selected States and on a 50-percent sample of births in all other States; see Technical notes]

Year and race of child	Total	In hospital ¹				Not in hospital ²			
		Physician	Midwife	Other	Unspecified	Physician	Midwife	Other	Unspecified
All races									
1982	3,680,537	3,560,644	63,062	11,936	6,554	10,296	14,375	11,855	1,815
1981	3,629,238	3,490,919	55,537	13,303	31,823	10,998	12,754	11,794	2,110
1980	3,612,258	3,499,959	51,576	17,456	7,379	11,992	11,093	11,630	1,173
1979	3,494,398	3,393,773	44,496	11,221	10,994	11,837	10,363	10,032	1,682
1978	3,333,279	3,221,677	36,282	12,721	29,979	11,806	9,778	9,167	1,869
1977	3,326,632	3,203,242	30,635	12,531	47,065	12,766	9,991	7,449	2,953
1976	3,167,788	3,055,287	24,656	12,871	45,282	11,940	9,574	5,914	2,264
1975	3,144,198	3,026,024	19,686	7,122	64,069	11,265	9,727	2,960	3,345
White									
1982	2,942,054	2,853,427	42,684	8,197	5,116	7,982	13,262	9,982	1,404
1981	2,908,669	2,804,868	37,019	9,405	25,505	8,560	11,577	10,047	1,688
1980	2,898,732	2,815,382	33,730	13,691	5,548	9,495	9,919	10,021	946
1979	2,808,420	2,733,403	29,086	8,380	9,157	9,356	8,879	8,734	1,425
1978	2,681,116	2,598,455	22,319	9,952	23,977	9,136	7,733	8,059	1,485
1977	2,691,070	2,600,011	17,935	9,643	38,056	9,389	7,028	6,605	2,403
1976	2,567,614	2,486,339	13,733	9,642	36,203	8,894	5,824	5,148	1,831
1975	2,551,996	2,465,957	10,076	5,342	52,392	7,818	5,082	2,585	2,744
All other									
1982	738,483	707,217	20,378	3,739	1,438	2,314	1,113	1,873	411
1981	720,569	686,051	18,518	3,898	6,318	2,438	1,177	1,747	422
1980	713,526	684,577	17,846	3,765	1,831	2,497	1,174	1,609	227
1979	685,978	660,370	15,410	2,841	1,837	2,481	1,484	1,298	257
1978	652,163	623,222	13,963	2,769	6,002	2,670	2,045	1,108	384
1977	635,562	603,231	12,700	2,888	9,009	3,377	2,963	844	550
1976	600,174	568,948	10,923	3,229	9,079	3,046	3,750	766	433
1975	592,202	560,067	9,610	1,780	11,677	3,447	4,645	375	601
Black									
1982	592,641	568,943	16,162	2,147	1,024	1,868	877	1,364	256
1981	587,797	561,821	15,104	2,113	4,267	1,976	991	1,262	263
1980	589,616	567,568	14,229	2,090	1,321	2,062	1,001	1,170	175
1979	577,855	557,183	13,001	1,856	1,205	2,099	1,356	954	201
1978	551,540	527,861	11,549	1,875	4,906	2,325	1,924	825	275
1977	544,221	518,069	10,295	2,105	6,802	3,044	2,883	578	445
1976	514,479	488,335	8,954	2,480	7,378	2,728	3,675	550	379
1975	511,581	484,416	7,707	1,311	9,595	3,161	4,602	281	508

¹Includes births occurring en route to or on arrival at hospital.

²Includes births with place of delivery not stated.

Table 12. Percent distribution of live births by place of delivery and attendant, according to race of child: United States, 1975-82

[Based on 100 percent of births in selected States and on a 50-percent sample of births in all other States; see Technical notes]

Year and race of child	Total	In hospital ¹				Not in hospital ²			
		Total	Physician	Midwife	Other	Total	Physician	Midwife	Other
All races									
1982	100.0	99.0	97.0	1.7	0.3	1.0	0.3	0.4	0.3
1981	100.0	99.0	97.1	1.5	0.4	1.0	0.3	0.4	0.3
1980	100.0	99.0	97.1	1.4	0.5	0.9	0.3	0.3	0.3
1979	100.0	99.1	97.5	1.3	0.3	0.9	0.3	0.3	0.3
1978	100.0	99.1	97.6	1.1	0.4	1.0	0.4	0.3	0.3
1977	100.0	99.1	97.8	0.9	0.4	0.9	0.4	0.3	0.2
1976	100.0	99.1	97.9	0.8	0.4	0.9	0.4	0.3	0.2
1975	100.0	99.2	98.4	0.6	0.2	0.8	0.4	0.3	0.1
White									
1982	100.0	99.0	97.2	1.5	0.3	1.1	0.3	0.5	0.3
1981	100.0	98.9	97.3	1.3	0.3	1.0	0.3	0.4	0.3
1980	100.0	99.0	97.3	1.2	0.5	1.0	0.3	0.3	0.3
1979	100.0	99.0	97.7	1.0	0.3	0.9	0.3	0.3	0.3
1978	100.0	99.0	97.8	0.8	0.4	0.9	0.3	0.3	0.3
1977	100.0	99.2	98.1	0.7	0.4	0.9	0.4	0.3	0.2
1976	100.0	99.2	98.3	0.5	0.4	0.8	0.4	0.2	0.2
1975	100.0	99.4	98.8	0.4	0.2	0.6	0.3	0.2	0.1
All other									
1982	100.0	99.3	96.0	2.8	0.5	0.8	0.3	0.2	0.3
1981	100.0	99.2	96.1	2.6	0.5	0.7	0.3	0.2	0.2
1980	100.0	99.2	96.2	2.5	0.5	0.8	0.4	0.2	0.2
1979	100.0	99.3	96.6	2.3	0.4	0.8	0.4	0.2	0.2
1978	100.0	99.1	96.5	2.2	0.4	0.9	0.4	0.3	0.2
1977	100.0	98.9	96.4	2.0	0.5	1.1	0.5	0.5	0.1
1976	100.0	98.6	96.3	1.8	0.5	1.2	0.5	0.6	0.1
1975	100.0	98.6	96.6	1.7	0.3	1.5	0.6	0.8	0.1
Black									
1982	100.0	99.3	96.2	2.7	0.4	0.6	0.3	0.1	0.2
1981	100.0	99.3	96.3	2.6	0.4	0.7	0.3	0.2	0.2
1980	100.0	99.3	96.5	2.4	0.4	0.8	0.4	0.2	0.2
1979	100.0	99.3	96.7	2.3	0.3	0.8	0.4	0.2	0.2
1978	100.0	99.0	96.6	2.1	0.3	1.0	0.4	0.4	0.2
1977	100.0	98.8	96.5	1.9	0.4	1.2	0.6	0.5	0.1
1976	100.0	98.7	96.4	1.8	0.5	1.3	0.5	0.7	0.1
1975	100.0	98.4	96.6	1.5	0.3	1.6	0.6	0.9	0.1

¹Includes births occurring en route to or on arrival at hospital.²Includes births with place of delivery not stated.

NOTE: Figures for 1975-81 have been revised. Births for which the attendant is unspecified are excluded from the percent distributions; see Technical notes.

Table 13. Live births by age of father, age of mother, and race of child: United States, 1982

[Based on 100 percent of births in selected States and on a 50-percent sample of births in all other States; see Technical notes]

Age of mother and race of child	Total	Age of father									55 years and over	Not stated
		Under 15 years	15-19 years	20-24 years	25-29 years	30-34 years	35-39 years	40-44 years	45-49 years	50-54 years		
All races ¹												
All ages.....	3,680,537	196	125,109	767,562	1,093,481	779,540	319,124	99,119	31,225	11,702	6,706	446,773
Under 15 years...	9,773	68	2,138	721	129	19	13	5	1	5	-	6,674
15-19 years.....	513,758	94	101,191	190,589	38,217	8,467	2,548	844	324	144	113	171,227
20-24 years.....	1,205,979	14	19,887	493,823	405,370	92,848	23,335	7,220	2,288	951	625	159,618
25-29 years.....	1,151,934	15	1,584	71,906	571,141	337,243	73,387	18,320	5,663	2,153	1,246	69,276
30-34 years.....	605,273	5	238	8,857	70,300	311,680	141,489	30,641	8,606	3,282	1,881	28,294
35-39 years.....	167,920	-	58	1,499	7,615	27,630	74,524	32,819	9,058	3,268	1,878	9,571
40-44 years.....	24,664	-	13	153	693	1,608	3,769	9,123	4,819	1,632	848	2,006
45-49 years.....	1,236	-	-	14	16	45	59	147	466	267	115	107
White												
All ages.....	2,942,054	91	97,524	645,261	941,745	664,781	266,576	78,509	23,355	8,529	4,584	211,099
Under 15 years...	4,153	25	1,129	535	88	14	11	4	1	4	-	2,342
15-19 years.....	357,948	44	78,359	156,925	30,827	6,699	1,995	650	225	104	78	82,042
20-24 years.....	958,509	8	16,469	419,503	344,517	75,559	18,655	5,520	1,664	649	389	75,576
25-29 years.....	961,053	9	1,296	59,797	500,540	287,293	59,841	14,113	4,113	1,514	804	31,733
30-34 years.....	503,847	5	209	7,127	59,019	270,917	119,371	23,860	6,328	2,359	1,288	13,364
35-39 years.....	136,664	-	50	1,236	6,172	23,027	63,697	26,770	6,917	2,519	1,336	4,940
40-44 years.....	19,027	-	12	129	569	1,238	2,969	7,474	3,768	1,206	612	1,050
45-49 years.....	853	-	-	9	13	34	37	118	339	174	77	52
Black												
All ages.....	592,641	88	23,748	98,855	113,564	76,276	34,007	13,964	5,642	2,324	1,535	222,638
Under 15 years...	5,395	43	956	164	29	4	2	1	-	1	-	4,195
15-19 years.....	140,534	42	19,889	27,960	5,756	1,332	442	150	79	35	28	84,821
20-24 years.....	207,640	1	2,671	60,336	47,004	12,405	3,519	1,350	510	255	196	79,393
25-29 years.....	143,748	2	202	9,035	52,079	33,101	8,968	3,090	1,212	504	317	35,238
30-34 years.....	69,781	-	25	1,168	7,689	26,311	13,643	4,397	1,627	665	421	13,835
35-39 years.....	21,341	-	4	173	931	2,894	6,896	3,855	1,435	537	380	4,236
40-44 years.....	3,966	-	1	18	73	221	524	1,105	693	287	174	870
45-49 years.....	236	-	-	1	3	8	13	16	86	40	19	50

¹Includes races other than white and black.

Table 14. Birth rates by age of father and race of child: United States, 1970-82

[Rates are live births per 1,000 men in specified group, enumerated as of April 1 for 1970 and 1980 and estimated as of July 1 for all other years. Figures for age of father not stated are distributed]

Year and race of child	Age of father									
	15-54 years ¹	15-19 years ²	20-24 years	25-29 years	30-34 years	35-39 years	40-44 years	45-49 years	50-54 years	55 years and over
All races										
1982 ³	56.4	18.7	86.1	117.4	90.4	44.2	17.6	6.4	2.4	0.4
1981 ³	56.3	18.5	88.0	119.7	88.6	43.2	16.9	6.3	2.3	0.4
1980 ³	57.0	18.8	92.0	123.0	91.0	42.8	17.1	6.1	2.2	0.4
1979 ³	55.8	18.5	90.6	122.4	89.3	42.2	16.7	6.0	2.3	0.3
1978 ³	54.1	18.1	89.7	120.0	86.7	40.8	16.3	5.8	2.2	0.3
1977 ³	54.9	19.1	92.8	124.2	85.9	41.1	16.5	6.0	2.2	0.3
1976 ³	53.2	19.4	92.1	120.3	82.6	39.8	16.2	6.0	2.1	0.3
1975 ³	53.8	20.8	96.2	123.9	81.5	39.9	16.5	6.1	2.2	0.4
1974 ³	55.0	21.7	101.2	128.2	83.9	40.8	16.8	6.2	2.2	0.4
1973 ³	55.7	22.4	104.3	129.7	86.0	42.5	18.0	6.7	2.3	0.4
1972 ³	59.1	23.4	113.2	137.6	91.8	46.7	19.9	7.4	2.5	0.4
1971 ⁴	66.1	23.9	129.8	160.2	103.8	53.2	22.7	8.2	2.9	0.5
1970 ⁴	71.5	25.6	146.6	175.0	112.3	57.6	24.9	9.1	3.1	0.6
White										
1982 ³	52.5	14.8	79.2	113.3	86.7	40.9	15.4	5.2	1.8	0.3
1981 ³	52.3	14.9	80.7	115.2	84.7	39.7	14.7	5.1	1.8	0.3
1980 ³	52.9	15.2	84.0	118.4	86.9	39.2	14.7	5.0	1.8	0.3
1979 ³	51.6	14.9	82.2	117.4	85.3	38.7	14.6	5.0	1.8	0.2
1978 ³	50.0	14.7	81.0	115.0	82.9	37.4	14.2	4.9	1.7	0.2
1977 ³	50.9	15.5	84.0	119.4	82.7	37.8	14.5	5.1	1.7	0.2
1976 ³	49.3	15.8	83.2	115.6	79.7	36.7	14.4	5.1	1.7	0.2
1975 ³	49.8	17.1	86.6	119.5	78.6	36.8	14.8	5.2	1.7	0.3
1974 ³	51.1	17.7	91.0	124.3	81.1	37.9	15.2	5.4	1.8	0.3
1973 ³	51.5	18.1	93.3	125.4	83.2	39.5	16.4	5.7	1.8	0.3
1972 ³	54.7	18.8	101.8	133.2	88.7	43.4	18.1	6.3	2.0	0.3
1971 ⁴	61.5	19.3	118.3	155.6	100.1	49.6	20.6	7.0	2.3	0.3
1970 ⁴	67.1	21.0	135.3	170.9	109.3	54.5	22.9	7.9	2.6	0.4
All other										
1982 ³	80.1	37.3	123.5	141.9	112.9	67.6	32.6	14.7	6.6	1.3
1981 ³	81.2	36.3	129.7	147.4	113.9	68.0	32.3	14.3	6.2	1.3
1980 ³	83.6	37.5	139.0	152.3	118.9	68.6	33.7	14.3	6.2	1.3
1979 ³	83.5	37.5	141.1	155.1	118.2	68.2	32.3	14.0	6.3	1.2
1978 ³	81.9	36.7	143.1	153.2	114.6	66.5	31.8	13.1	5.9	1.2
1977 ³	82.3	38.9	147.3	156.7	110.4	65.3	31.1	13.2	6.2	1.2
1976 ³	80.1	39.2	148.8	153.9	104.4	62.4	29.3	13.2	5.9	1.3
1975 ³	81.8	42.4	158.5	156.4	102.5	63.5	29.4	13.1	6.0	1.4
1974 ³	83.4	45.2	168.4	157.7	104.2	62.9	29.5	13.2	6.4	1.4
1973 ³	86.4	48.2	178.5	163.1	106.9	65.5	30.5	14.8	6.3	1.5
1972 ³	91.9	50.9	191.7	173.1	115.2	71.1	34.4	16.4	7.2	1.8
1971 ⁴	100.8	51.9	211.5	195.4	130.8	80.4	39.9	18.9	8.1	2.1
1970 ⁴	104.5	55.2	224.9	202.6	135.1	82.4	42.5	20.4	9.0	2.7
Black										
1982 ³	79.8	40.7	129.4	141.8	104.0	61.2	30.5	14.1	6.3	1.2
1981 ³	81.2	39.3	136.6	148.1	105.2	61.9	30.3	13.6	6.0	1.2
1980 ³	83.8	40.4	146.6	154.2	110.8	62.8	31.5	13.8	6.0	1.2
1979 ³	83.7	40.2	148.7	156.7	109.8	62.3	30.7	13.7	6.2	1.1
1978 ³	81.9	39.0	150.7	154.1	106.3	61.0	30.1	12.7	5.7	1.1
1977 ³	82.9	41.4	155.2	158.6	104.5	60.5	30.1	12.7	6.1	1.1
1976 ³	80.4	41.7	156.6	154.3	97.7	57.2	28.0	12.7	5.7	1.1
1975 ³	82.1	45.0	167.3	156.8	95.5	57.7	28.5	12.6	5.9	1.1
1974 ³	83.4	47.9	176.8	156.8	96.5	57.5	28.5	12.8	6.2	1.1
1973 ³	86.7	51.1	187.3	162.6	100.6	60.6	29.8	14.4	6.2	1.3
1972 ³	92.5	54.0	201.5	172.9	109.2	67.4	33.5	16.1	6.9	1.5
1971 ⁴	101.7	54.8	222.9	197.2	125.5	76.7	39.0	18.5	7.8	1.8
1970 ⁴	107.4	58.7	243.7	209.6	132.6	80.9	41.9	20.6	8.8	2.1

¹Rates computed by relating total births, regardless of age of father, to men aged 15-54 years.

²Rates computed by relating births of fathers under 20 years of age to men aged 15-19 years.

³Based on 100 percent of births in selected States and on a 50-percent sample of births in all other States; see Technical notes.

⁴Based on a 50-percent sample of births.

Table 15. Number and percent low birth weight and live births by birth weight, by age of mother and race of child: United States, 1982

[Based on 100 percent of births in selected States and on a 50-percent sample of births in all other States; see Technical notes]

Age of mother and race of child	Low birth weight ¹		Total	Birth weight ²											Not stated
	Number	Percent		Less than 500	500- 999	1,000- 1,499	1,500- 1,999	2,000- 2,499	2,500- 2,999	3,000- 3,499	3,500- 3,999	4,000- 4,499	4,500- 4,999	5,000 grams or more	
				grams	grams	grams	grams	grams	grams	grams	grams	grams	grams	grams	
All races															
All ages.....	248,104	6.8	3,680,537	3,992	16,673	22,547	47,293	157,599	593,266	1,357,866	1,074,913	331,283	61,009	8,260	5,836
Under 15 years.....	1,351	13.8	9,773	21	131	150	267	782	2,419	3,768	1,850	329	30	3	23
15-19 years.....	47,861	9.3	513,758	724	3,296	4,791	9,391	29,659	105,919	201,296	124,096	29,240	4,057	403	886
15 years.....	3,007	12.0	25,091	48	225	329	608	1,797	5,947	9,879	5,075	1,029	100	12	42
16 years.....	6,281	11.0	57,348	103	503	665	1,258	3,752	12,657	22,622	12,645	2,669	320	32	122
17 years.....	9,705	9.8	98,723	145	669	1,010	1,926	5,955	21,145	38,697	23,148	5,148	666	47	167
18 years.....	13,286	9.2	144,937	194	910	1,339	2,625	8,218	29,720	56,728	35,315	8,290	1,238	119	241
19 years.....	15,582	8.3	187,659	234	989	1,448	2,974	9,937	36,450	73,370	47,913	12,104	1,733	193	314
20-24 years.....	83,031	6.9	1,205,979	1,294	5,388	7,285	15,609	53,455	206,197	458,434	341,979	96,756	15,824	1,839	1,919
25-29 years.....	66,640	5.8	1,151,934	1,083	4,492	5,840	12,420	42,805	168,944	419,872	356,137	114,589	21,175	2,861	1,716
30-34 years.....	35,488	5.9	605,273	660	2,416	3,242	6,792	22,378	82,674	210,247	191,810	67,592	14,392	2,106	964
35-39 years.....	11,508	6.9	167,920	186	828	1,036	2,324	7,134	23,225	55,751	51,678	19,848	4,766	880	264
40-44 years.....	2,104	8.5	24,664	23	114	193	462	1,312	3,714	8,079	7,032	2,790	727	160	58
45-49 years.....	121	9.8	1,236	1	8	10	28	74	174	419	331	139	38	8	6
White															
All ages.....	165,285	5.6	2,942,054	2,289	10,172	14,546	31,453	106,825	421,414	1,070,533	921,481	296,232	55,281	7,304	4,524
Under 15 years.....	485	11.7	4,153	6	49	55	103	272	820	1,579	1,003	234	20	1	11
15-19 years.....	27,280	7.6	357,948	344	1,716	2,726	5,460	17,034	63,894	139,640	97,787	24,805	3,580	357	605
15 years.....	1,298	9.7	13,346	22	94	149	281	752	2,556	5,301	3,302	775	78	11	25
16 years.....	3,231	9.1	35,629	49	255	346	668	1,913	6,666	13,972	9,256	2,118	284	28	74
17 years.....	5,492	8.2	66,894	57	344	558	1,132	3,401	12,312	26,172	17,815	4,362	584	40	117
18 years.....	7,895	7.7	102,954	100	509	806	1,605	4,875	18,444	40,014	28,201	7,041	1,090	103	166
19 years.....	9,364	6.7	139,125	116	514	867	1,774	6,093	23,916	54,181	39,213	10,509	1,544	175	223
20-24 years.....	54,776	5.7	958,509	728	3,236	4,666	10,189	35,957	146,229	360,637	292,661	86,659	14,418	1,644	1,485
25-29 years.....	47,354	4.9	961,053	656	2,912	4,003	8,850	30,933	127,813	345,911	312,853	103,834	19,377	2,539	1,372
30-34 years.....	25,649	5.1	503,847	428	1,639	2,241	4,867	16,474	62,670	172,027	167,141	60,732	12,988	1,853	787
35-39 years.....	8,232	6.0	136,664	116	537	722	1,657	5,200	17,240	44,429	44,050	17,500	4,235	761	217
40-44 years.....	1,439	7.6	19,027	11	76	131	310	911	2,641	6,038	5,733	2,363	628	141	44
45-49 years.....	70	8.2	853	-	7	2	17	44	107	272	253	105	35	8	3
All other															
All ages.....	82,819	11.2	738,483	1,703	6,501	8,001	15,840	50,774	171,852	287,333	153,432	35,051	5,728	956	1,312
Under 15 years.....	866	15.4	5,620	15	82	95	164	510	1,599	2,189	847	95	10	2	12
15-19 years.....	20,581	13.2	155,810	380	1,580	2,065	3,931	12,625	42,025	61,656	26,309	4,435	477	46	281
15 years.....	1,709	14.6	11,745	26	131	180	327	1,045	3,391	4,578	1,773	254	22	1	17
16 years.....	3,050	14.0	21,719	54	248	319	590	1,839	5,991	8,650	3,389	551	36	4	48
17 years.....	4,213	13.2	31,829	88	325	452	794	2,554	8,833	12,525	5,333	786	82	7	50
18 years.....	5,391	12.8	41,983	94	401	533	1,020	3,343	11,276	16,714	7,114	1,249	148	16	75
19 years.....	6,218	12.8	48,534	118	475	581	1,200	3,844	12,534	19,189	8,700	1,595	189	18	91
20-24 years.....	28,255	11.4	247,470	566	2,152	2,619	5,420	17,498	59,968	97,797	49,318	10,097	1,406	195	434
25-29 years.....	19,286	10.1	190,881	427	1,580	1,837	3,570	11,872	41,131	73,961	43,284	10,755	1,798	322	344

See footnotes at end of table.

Table 15. Number and percent low birth weight and live births by birth weight, by age of mother and race of child: United States, 1982—Con.

[Based on 100 percent of births in selected States and on a 50-percent sample of births in all other States; see Technical notes]

Age of mother and race of child	Low birth weight ¹		Birth weight ²											Not stated	
			Total	Less than 500	500– 999	1,000– 1,499	1,500– 1,999	2,000– 2,499	2,500– 2,999	3,000– 3,499	3,500– 3,999	4,000– 4,499	4,500– 4,999		5,000 grams or more
				grams	grams	grams	grams	grams	grams	grams	grams	grams	grams		grams
All other—Con.															
30–34 years.....	9,839	9.7	101,426	232	777	1,001	1,925	5,904	20,004	38,220	24,669	6,860	1,404	253	177
35–39 years.....	3,276	10.5	31,256	70	291	314	667	1,934	5,985	11,322	7,628	2,348	531	119	47
40–44 years.....	665	11.8	5,637	12	38	62	152	401	1,073	2,041	1,299	427	99	19	14
45–49 years.....	51	13.3	383	1	1	8	11	30	67	147	78	34	3	-	3
Black															
All ages.....	73,360	12.4	592,641	1,622	5,975	7,273	14,258	44,232	143,032	227,680	116,987	25,753	4,083	699	1,047
Under 15 years.....	835	15.5	5,395	13	79	92	161	490	1,553	2,107	791	86	10	2	11
15–19 years.....	19,311	13.7	140,534	366	1,492	1,939	3,715	11,799	38,831	55,550	22,654	3,549	362	36	241
15 years.....	1,651	14.9	11,093	25	127	175	318	1,006	3,254	4,324	1,603	223	20	1	17
16 years.....	2,911	14.4	20,235	51	235	302	573	1,750	5,695	8,074	3,041	440	27	3	44
17 years.....	3,986	13.8	28,954	82	314	426	746	2,418	8,239	11,344	4,647	636	54	6	42
18 years.....	5,020	13.3	37,664	91	377	490	958	3,104	10,344	14,980	6,113	1,007	121	11	68
19 years.....	5,743	13.5	42,588	117	439	546	1,120	3,521	11,299	16,828	7,250	1,243	140	15	70
20–24 years.....	25,615	12.3	207,640	546	2,011	2,450	4,971	15,637	51,782	81,470	39,571	7,675	1,026	150	351
25–29 years.....	16,505	11.5	143,748	401	1,440	1,645	3,119	9,900	31,874	54,393	31,479	7,728	1,285	221	263
30–34 years.....	7,964	11.4	69,781	220	680	836	1,630	4,598	14,059	25,220	16,494	4,770	957	180	137
35–39 years.....	2,564	12.0	21,341	64	240	258	539	1,463	4,117	7,465	5,080	1,627	363	94	31
40–44 years.....	528	13.3	3,966	11	32	48	116	321	776	1,388	869	299	78	16	12
45–49 years.....	38	16.1	236	1	1	5	7	24	40	87	49	19	2	-	1

¹Less than 2,500 grams.

²Equivalents of the gram weight in terms of pounds and ounces are as follows:

- Under 500 grams = 1 pound 1 ounce or less
- 500–999 grams = 1 pound 2 ounces–2 pounds 3 ounces
- 1,000–1,499 grams = 2 pounds 4 ounces–3 pounds 4 ounces
- 1,500–1,999 grams = 3 pounds 5 ounces–4 pounds 6 ounces
- 2,000–2,499 grams = 4 pounds 7 ounces–5 pounds 8 ounces
- 2,500–2,999 grams = 5 pounds 9 ounces–6 pounds 9 ounces
- 3,000–3,499 grams = 6 pounds 10 ounces–7 pounds 11 ounces
- 3,500–3,999 grams = 7 pounds 12 ounces–8 pounds 13 ounces
- 4,000–4,499 grams = 8 pounds 14 ounces–9 pounds 14 ounces
- 4,500–4,999 grams = 9 pounds 15 ounces–11 pounds 0 ounces
- 5,000 grams or more = 11 pounds 1 ounce or more

Table 16. Number and percent of births of low birth weight and number and ratio of births to unmarried women, by race of child: United States and each State, 1982

[By place of residence. Based on 100 percent of births in selected States and on a 50-percent sample of births in all other States; see Technical notes]

State	Low birth weight ¹						Births to unmarried women					
	Number			Percent			Number			Ratio per 1,000 live births		
	All races ²	White	Black	All races ²	White	Black	All races ²	White	Black	All races ²	White	Black
United States	248,104	165,285	73,360	6.8	5.6	12.4	715,227	355,180	335,927	194.3	120.7	566.8
Alabama	4,757	2,227	2,503	7.9	5.7	11.9	13,996	2,587	11,397	232.0	66.5	540.7
Alaska	552	338	43	4.9	4.2	8.6	1,888	788	118	167.1	98.5	236.0
Arizona	3,102	2,549	209	5.9	5.8	9.1	10,626	6,945	1,149	201.8	156.9	496.3
Arkansas	2,620	1,536	1,059	7.4	5.8	12.3	7,363	2,342	4,995	208.1	89.0	577.0
California ³	25,252	17,643	4,904	5.9	5.2	11.0	93,007	64,335	23,460	216.3	188.3	525.9
Colorado	4,216	3,698	341	7.7	7.4	12.4	7,769	6,547	1,023	141.8	130.5	371.7
Connecticut ³	2,734	2,017	672	6.8	5.8	13.4	7,891	4,733	3,074	195.1	136.3	613.0
Delaware	667	397	258	7.3	5.7	12.6	2,204	818	1,372	240.1	116.4	668.3
District of Columbia	1,241	99	1,128	13.4	5.8	15.1	5,004	228	4,768	537.7	132.1	637.9
Florida	10,785	6,302	4,364	7.5	5.9	11.9	35,422	12,777	22,501	245.1	120.2	614.5
Georgia	7,612	3,457	4,100	8.5	6.1	12.7	23,263	5,936	17,266	257.9	104.3	533.2
Hawaii	1,372	288	65	7.3	6.4	9.4	3,466	566	84	185.3	126.4	121.0
Idaho	1,043	1,002	6	5.3	5.3	5.5	1,726	1,591	18	88.0	83.9	163.6
Illinois	13,206	7,646	5,301	7.2	5.5	13.6	42,695	15,886	26,553	232.5	113.2	680.3
Indiana	5,351	4,238	1,077	6.4	5.7	12.0	14,290	8,616	5,632	170.2	116.1	622.7
Iowa	2,135	1,981	113	4.8	4.6	10.9	5,074	4,407	582	113.4	102.4	563.4
Kansas	2,542	2,030	420	6.2	5.6	12.2	5,278	3,379	1,760	129.2	93.3	511.3
Kentucky	3,939	3,325	589	6.9	6.5	11.3	8,983	5,974	2,990	158.1	116.8	575.3
Louisiana	7,073	3,018	3,962	8.4	5.8	12.8	20,210	4,039	16,100	238.9	77.4	518.2
Maine	842	823	8	5.1	5.1	8.4	2,459	2,390	11	147.5	146.3	115.8
Maryland ³	4,716	2,296	2,323	7.4	5.4	12.1	17,246	5,505	11,470	270.3	128.2	599.1
Massachusetts	4,470	3,752	605	5.9	5.5	11.0	12,564	9,435	2,947	165.6	137.6	536.8
Michigan ³	9,504	6,313	3,067	6.9	5.6	13.8	22,378	10,586	11,630	161.8	93.0	522.2
Minnesota	3,324	2,939	176	4.9	4.7	10.4	8,427	6,525	991	123.0	102.3	580.9
Mississippi	4,060	1,443	2,586	8.8	6.0	12.0	13,605	1,467	12,066	295.9	61.0	560.8
Missouri	5,072	3,558	1,455	6.6	5.5	12.6	14,395	6,750	7,573	187.4	104.9	656.0
Montana ³	818	719	7	5.6	5.6	10.1	2,070	1,338	15	142.3	104.1	217.4
Nebraska	1,474	1,249	174	5.5	5.0	12.9	3,434	2,427	811	127.4	97.3	602.5
Nevada ³	936	705	163	6.4	5.8	11.6	2,047	1,196	735	140.7	98.7	523.9
New Hampshire	734	723	4	5.2	5.2	4.0	1,734	1,695	25	123.1	122.4	247.5
New Jersey	6,832	4,112	2,546	6.9	5.4	12.9	21,425	9,156	12,148	217.1	119.8	616.7
New Mexico	2,149	1,804	85	7.8	7.9	11.7	6,119	4,182	253	220.7	181.5	344.7
New York ³	17,894	10,978	6,451	7.2	5.9	12.1	63,298	30,100	32,522	256.0	161.7	606.5
North Carolina	6,867	3,517	3,161	8.0	6.0	12.4	17,404	4,131	12,772	202.5	71.0	502.4
North Dakota	607	542	10	4.8	4.7	7.8	1,318	873	10	104.4	76.0	77.5
Ohio ³	10,887	7,917	2,852	6.6	5.7	12.6	31,070	16,660	14,271	188.6	118.8	626.4
Oklahoma	3,989	2,938	676	6.8	6.3	12.6	8,204	4,264	2,722	139.5	90.7	507.6
Oregon	2,010	1,770	104	4.9	4.7	10.6	6,504	5,610	532	158.5	147.9	542.9
Pennsylvania	10,535	7,660	2,744	6.5	5.5	13.2	31,224	16,806	14,227	192.8	121.0	682.0
Rhode Island	760	619	101	6.1	5.5	12.4	2,009	1,500	460	160.6	133.5	565.1
South Carolina	4,585	1,907	2,655	8.9	6.2	13.0	12,595	2,421	10,147	243.9	78.8	496.6
South Dakota	655	522	9	5.1	4.8	10.3	1,924	941	16	149.6	86.1	183.9
Tennessee	5,279	3,284	1,944	7.9	6.4	13.2	14,001	5,014	8,963	208.8	96.9	609.8
Texas ³	20,394	15,028	4,925	6.9	6.0	12.2	41,447	23,060	18,164	139.2	91.8	449.1
Utah	2,327	2,183	31	5.6	5.5	11.2	2,905	2,560	115	69.9	64.6	413.7
Vermont	473	469	1	5.9	5.9	3.6	1,184	1,172	10	147.5	147.3	357.1
Virginia	5,852	3,366	2,344	7.2	5.6	12.2	15,981	5,516	10,342	196.9	92.1	537.5
Washington	3,510	2,861	318	5.1	4.7	10.1	9,997	7,777	1,227	143.8	127.5	390.6
West Virginia	1,833	1,709	113	6.7	6.6	10.0	3,901	3,322	575	143.0	127.7	509.8
Wisconsin	3,726	3,041	591	5.0	4.5	12.1	11,188	7,401	3,306	150.4	109.3	675.2
Wyoming	791	747	17	7.2	7.1	15.7	1,015	906	29	91.7	86.0	268.5

¹Less than 2,500 grams (5 pounds 8 ounces).
²Includes races other than white and black.
³Marital status of mother is inferred; see Technical notes.

Table 17. Numbers, rates, and ratios of births to unmarried women, by age of mother and race of child: United States, 1982

[Based on 100 percent of births in selected States and on a 50-percent sample of births in all other States; see Technical notes. For 41 States and the District of Columbia, marital status of mother is reported on the birth certificate, and for 9 States, mother's marital status is inferred; see Technical notes. Populations estimated as of July 1]

Age of mother	Number				Rate per 1,000 unmarried women in specified group				Ratio per 1,000 live births			
	All races	White	All other		All races	White	All other		All races	White	All other	
			Total	Black			Total	Black			Total	Black
All ages.....	715,227	355,180	360,047	335,927	130.0	118.8	173.9	179.6	194.3	120.7	4,875	566.8
Under 15 years.....	8,720	3,225	5,495	5,305	---	---	---	---	892.3	776.5	977.8	983.3
15-19 years.....	260,626	130,677	129,949	122,163	28.9	17.7	79.2	87.0	507.3	365.1	834.0	869.3
15 years.....	20,142	8,858	11,284	10,776	21.5	12.9	60.7	67.6	802.8	663.7	960.7	971.4
16 years.....	39,750	19,461	20,289	19,270					693.1	546.2	934.2	952.3
17 years.....	57,804	29,529	28,275	26,562					585.5	441.4	888.3	917.4
18 years.....	70,496	35,958	34,538	32,377					486.4	349.3	822.7	859.6
19 years.....	72,434	36,871	35,563	33,178	40.2	25.1	107.0	115.8	386.0	265.0	732.7	779.0
20-24 years.....	257,473	126,882	130,591	122,126	41.4	25.7	102.1	110.2	213.5	132.4	527.7	588.2
25-29 years.....	118,954	58,054	60,900	56,349	35.1	22.2	78.9	85.5	103.3	60.4	319.0	392.0
30-34 years.....	49,559	25,162	24,397	22,202	21.9	14.7	44.4	45.8	81.9	49.9	240.5	318.2
35-39 years.....	16,420	9,173	7,247	6,469	10.0	7.1	20.0	20.1	97.8	67.1	231.9	303.1
40 years and over ...	3,475	2,007	1,468	1,313	22.7	22.0	25.4	25.4	134.2	101.0	243.9	312.5

¹Rates computed by relating total births to unmarried mothers, regardless of age of mother, to unmarried women aged 15-44 years.
²Rates computed by relating births to unmarried mothers aged 40 years and over to unmarried women aged 40-44 years.

Table 18. Birth rates for unmarried women by age of mother and race of child: United States, 1970-82

[Rates are live births to unmarried women per 1,000 unmarried women in specified group, estimated as of July 1]

Year and race of child	Age of mother								
	15-44 years ¹	15-19 years			20-24 years	25-29 years	30-34 years	35-39 years	40-44 years ²
		Total	15-17 years	18-19 years					
ALL RACES									
Reported and/or inferred ³									
1982 ⁴	30.0	28.9	21.5	40.2	41.4	35.1	21.9	10.0	2.7
1981 ⁴	29.6	28.2	20.9	39.9	40.9	34.7	20.8	9.8	2.6
1980 ⁴	29.4	27.6	20.6	39.0	40.9	34.0	21.1	9.7	2.6
Estimated ⁵									
1980 ⁴	28.4	27.5	20.7	38.7	39.7	31.4	18.5	8.4	2.3
1979 ⁴	27.2	26.4	19.9	37.2	37.7	29.9	17.7	8.4	2.3
1978 ⁴	25.7	24.9	19.1	35.1	35.3	28.5	16.9	8.2	2.2
1977 ⁴	25.6	25.1	19.8	34.6	34.0	27.7	16.9	8.4	2.4
1976 ⁴	24.3	23.7	19.0	32.1	31.7	26.8	17.5	9.0	2.5
1975 ⁴	24.5	23.9	19.3	32.5	31.2	27.5	17.9	9.1	2.6
1974 ⁴	23.9	23.0	18.8	31.2	30.5	27.9	18.4	10.0	2.6
1973 ⁴	24.3	22.7	18.7	30.4	31.5	29.6	20.3	10.8	3.0
1972 ⁴	24.8	22.8	18.5	30.9	33.2	30.8	22.6	12.0	3.1
1971 ⁶	25.5	22.3	17.5	31.7	35.5	34.5	25.2	13.3	3.5
1970 ⁶	26.4	22.4	17.1	32.9	38.4	37.0	27.1	13.6	3.5
WHITE									
Reported and/or inferred ³									
1982 ⁴	18.8	17.7	12.9	25.1	25.7	22.2	14.7	7.1	2.0
1981 ⁴	18.2	17.1	12.4	24.6	24.9	21.6	13.6	6.9	1.8
1980 ⁴	17.6	16.2	11.8	23.6	24.4	20.7	13.6	6.8	1.8
Estimated ⁵									
1980 ⁴	16.2	15.9	11.7	22.8	22.4	17.3	10.5	5.3	1.4
1979 ⁴	14.9	14.6	10.8	21.0	20.3	15.9	10.0	5.1	1.4
1978 ⁴	13.7	13.6	10.3	19.3	18.1	14.8	9.4	4.8	1.3
1977 ⁴	13.5	13.4	10.5	18.7	17.4	14.4	9.3	4.9	1.4
1976 ⁴	12.6	12.3	9.7	16.9	15.8	14.0	10.1	5.5	1.4
1975 ⁴	12.4	12.0	9.6	16.5	15.5	14.8	9.8	5.4	1.5
1974 ⁴	11.7	11.0	8.8	15.3	15.0	14.7	9.5	5.5	1.5
1973 ⁴	11.8	10.6	8.4	14.9	15.5	15.9	10.6	5.9	1.7
1972 ⁴	11.9	10.4	8.0	15.1	16.6	16.5	12.1	6.5	1.6
1971 ⁶	12.5	10.3	7.4	15.8	18.7	18.5	13.2	7.2	1.9
1970 ⁶	13.8	10.9	7.5	17.6	22.5	21.1	14.2	7.6	2.0
ALL OTHER									
Reported and/or inferred ³									
1982 ⁴	73.9	79.2	60.7	107.0	102.1	78.9	44.4	20.0	5.4
1981 ⁴	75.4	79.2	60.3	109.0	104.5	80.1	45.6	19.7	5.7
1980 ⁴	77.2	81.7	63.1	111.6	106.6	79.1	46.9	19.2	5.6
Estimated ⁵									
1980 ⁴	78.0	83.0	64.0	113.4	108.2	79.1	46.2	18.5	5.3
1979 ⁴	78.2	83.9	64.8	115.3	107.1	77.7	44.8	19.1	5.7
1978 ⁴	76.5	81.2	63.2	111.6	104.9	76.4	43.6	18.2	5.6
1977 ⁴	77.4	84.0	67.2	112.7	103.1	74.4	43.7	18.5	6.6
1976 ⁴	76.4	82.5	67.5	108.9	101.1	74.0	43.4	18.7	6.9
1975 ⁴	79.0	86.3	70.7	114.3	102.1	73.2	47.9	20.0	6.9
1974 ⁴	80.3	87.3	73.2	113.4	103.0	77.0	50.9	23.2	6.6
1973 ⁴	83.2	88.5	75.6	112.8	107.8	81.0	55.8	26.2	7.2
1972 ⁴	86.2	91.8	77.6	119.3	112.4	83.3	55.7	29.0	8.2
1971 ⁶	90.2	92.0	75.4	125.4	120.6	92.6	65.3	32.2	10.4
1970 ⁶	89.9	90.8	73.3	126.5	121.0	93.8	69.8	32.0	10.7

See footnotes at end of table.

Table 18. Birth rates for unmarried women by age of mother and race of child: United States, 1970-82—Con.

[Rates are live births to unmarried women per 1,000 unmarried women in specified group, estimated as of July 1]

Year and race of child	Age of mother								
	15-44 years ¹	15-19 years			20-24 years	25-29 years	30-34 years	35-39 years	40-44 years ²
		Total	15-17 years	18-19 years					
BLACK									
Reported and/or inferred ³									
1982 ⁴	79.6	87.0	67.6	115.8	110.2	85.5	45.8	20.1	5.4
1981 ⁴	81.4	86.8	66.9	117.6	112.5	86.4	47.2	20.4	5.8
1980 ⁴	82.9	89.2	69.6	120.2	115.1	83.9	48.2	19.6	5.6
Estimated ⁵									
1980 ⁴	83.2	90.3	70.6	121.8	116.0	82.9	47.0	18.5	5.5
1979 ⁴	83.0	91.0	71.0	123.3	114.1	80.0	44.8	19.3	5.9
1978 ⁴	81.1	87.9	68.8	119.6	111.4	79.6	43.9	18.5	6.2
1977 ⁴	82.6	90.9	73.0	121.7	110.1	78.6	45.7	19.0	6.6
1976 ⁴	81.6	89.7	73.5	117.9	107.2	78.0	45.0	19.2	7.0
1975 ⁴	84.2	93.5	76.8	123.8	108.0	75.7	50.0	20.5	7.2
1974 ⁴	85.5	93.8	78.6	122.2	109.8	80.3	51.8	24.3	6.7
1973 ⁴	88.6	94.9	81.2	120.5	116.0	84.5	57.8	27.6	7.7
1972 ⁴	91.6	98.2	82.8	128.2	121.2	88.3	57.4	30.4	8.5
1971 ⁶	96.1	98.6	80.7	135.2	130.6	99.6	68.6	32.7	10.1
1970 ⁶	95.5	96.9	77.9	136.4	131.5	100.9	71.8	32.9	10.4

¹Rates computed by relating total births to unmarried mothers, regardless of age of mother, to unmarried women aged 15-44 years.²Rates computed by relating births to unmarried mothers aged 40 years and over to unmarried women aged 40-44 years.³Data for States in which marital status was not reported have been inferred and included with data from the remaining States; see Technical notes.⁴Based on 100 percent of births in selected States and on a 50-percent sample of births in all other States; see Technical notes.⁵Births to unmarried women are estimated for the United States from data for registration areas in which marital status of mother was reported; see Technical notes.⁶Based on a 50-percent sample of births.

Table 19. Live births by interval since last live birth, live-birth order, and race of child: Total of 49 reporting States and the District of Columbia, 1982

[Based on 100 percent of births in selected States and on a 50-percent sample of births in all other States; see Technical notes. Refers only to second and higher order births. Live-birth order refers to number of children born alive to mother]

Interval since last live birth and race of child	Total, second and higher order births ¹	Live-birth order						
		2	3	4	5	6	7	8 and over
All races ²	1,930,699	1,098,905	510,965	189,131	71,021	30,336	14,293	16,048
0 months (plural deliveries)	29,116	10,862	9,725	4,848	2,105	828	359	389
1-11 months	30,562	15,328	8,203	3,811	1,708	737	360	415
12-17 months	205,175	108,944	53,621	23,640	9,707	4,426	2,200	2,637
18-23 months	265,200	152,079	66,238	26,873	10,195	4,759	2,293	2,763
24-35 months	455,615	276,311	110,016	40,808	15,205	6,574	3,174	3,527
36-47 months	283,761	172,734	71,737	24,086	8,515	3,468	1,513	1,708
48-59 months	172,963	100,381	47,949	15,419	5,227	2,070	903	1,014
60-71 months	113,792	63,233	33,551	10,747	3,521	1,420	682	638
72 months or more	283,724	147,474	87,281	29,787	11,202	4,268	1,947	1,765
Not stated	90,791	51,559	22,644	9,112	3,636	1,786	862	1,192
White	1,515,200	893,594	396,695	136,997	48,463	19,986	9,275	10,190
0 months (plural deliveries)	22,370	8,743	7,688	3,572	1,424	514	217	212
1-11 months	19,398	10,757	5,087	2,017	856	333	158	190
12-17 months	150,241	85,424	38,558	15,286	5,842	2,485	1,210	1,436
18-23 months	213,604	127,791	52,282	19,918	6,999	3,187	1,565	1,862
24-35 months	376,835	236,694	88,651	31,232	10,955	4,685	2,229	2,389
36-47 months	232,011	145,463	57,738	18,060	6,101	2,445	1,053	1,151
48-59 months	136,899	81,149	37,998	11,341	3,686	1,446	598	681
60-71 months	87,505	49,261	26,069	7,846	2,487	974	437	431
72 months or more	208,684	108,135	66,119	21,503	7,761	2,835	1,266	1,065
Not stated	67,653	40,177	16,505	6,222	2,352	1,082	542	773
Black	332,604	161,405	92,769	42,813	18,542	8,390	4,028	4,657
0 months (plural deliveries)	5,775	1,767	1,730	1,110	591	286	132	159
1-11 months	9,011	3,642	2,559	1,485	682	315	146	182
12-17 months	43,016	17,671	12,107	6,761	3,148	1,564	806	959
18-23 months	39,972	18,161	11,067	5,618	2,608	1,244	556	718
24-35 months	61,031	29,558	17,051	7,839	3,410	1,522	736	915
36-47 months	40,939	20,960	11,339	4,963	2,024	833	372	448
48-59 months	29,068	15,194	8,127	3,415	1,297	515	253	267
60-71 months	21,716	11,499	6,151	2,427	876	380	202	181
72 months or more	63,870	33,847	17,710	6,981	2,916	1,235	589	592
Not stated	18,206	9,106	4,928	2,214	990	496	236	236

¹Excludes not stated birth order.

²Includes races other than white and black.

NOTE: Excludes data for Texas, which did not require reporting of date of last live birth.

Table 20. Live births by educational attainment of mother and father and race of child: Total of 47 reporting States and the District of Columbia, 1982

[Based on 100 percent of births in selected States and on a 50-percent sample of births in all other States; see Technical notes]

Years of school completed	Mother			Father		
	All races ¹	White	Black	All races ¹	White	Black
Total	2,883,402	2,288,322	504,450	2,883,402	2,288,322	504,450
0-5 years	19,254	11,717	3,525	17,797	13,098	2,254
6 years.....	14,366	10,570	2,300	14,663	11,716	1,690
7 years.....	16,871	11,559	4,401	11,474	9,135	1,746
8 years.....	63,028	47,239	13,329	46,475	40,075	4,788
9 years.....	116,176	84,362	27,896	62,970	53,712	7,367
10 years	189,496	133,447	49,996	115,729	94,799	17,553
11 years	213,770	135,629	71,670	136,720	104,204	28,482
12 years	1,237,397	996,637	210,035	1,016,678	849,302	141,193
13 years	217,551	179,889	32,612	147,300	127,462	15,828
14 years	232,277	190,623	34,944	228,446	197,252	24,496
15 years	87,585	71,864	12,895	81,893	69,353	9,861
16 years	297,268	262,576	24,158	326,822	296,157	20,662
17 years or more	137,093	121,002	9,484	239,579	217,306	10,626
Not stated	41,270	31,208	7,205	436,856	204,751	217,904

¹Includes races other than white and black.

NOTE: Excludes data for California, Texas, and Washington, which did not require reporting of educational attainment of mother and father.

Table 21. Live births by educational attainment of mother, age of mother, and race of child: Total of 47 reporting States and the District of Columbia, 1982

[Based on 100 percent of births in selected States and on a 50-percent sample of births in all other States; see Technical notes]

<i>Age of mother and race of child</i>	<i>Total</i>	<i>Years of school completed by mother</i>					<i>Not stated</i>
		<i>0-8 years</i>	<i>9-11 years</i>	<i>12 years</i>	<i>13-15 years</i>	<i>16 years or more</i>	
All races ¹	2,883,402	113,519	519,442	1,237,397	537,413	434,361	41,270
Under 15 years	7,742	5,575	1,947	-	-	-	220
15-19 years	403,364	30,413	214,582	138,885	13,205	99	6,180
15 years	19,824	6,064	13,261	129	-	-	370
16 years	45,359	5,716	37,810	1,047	14	-	772
17 years	77,693	5,798	58,467	12,064	157	-	1,207
18 years	113,818	6,398	54,684	48,856	2,174	-	1,706
19 years	146,670	6,437	50,360	76,789	10,860	99	2,125
20-24 years	943,033	30,727	180,440	506,992	172,345	39,496	13,033
25-29 years	906,547	22,554	78,311	385,853	219,582	188,074	12,173
30-34 years	474,801	14,460	29,574	155,741	105,169	162,883	6,974
35-39 years	128,327	7,436	11,705	42,817	24,186	39,937	2,246
40 years and over	19,588	2,354	2,883	7,109	2,926	3,872	444
White	2,288,322	81,085	353,438	996,637	442,376	383,578	31,208
Under 15 years	2,837	2,094	648	-	-	-	95
15-19 years	270,757	22,278	138,865	97,119	8,362	67	4,066
15 years	9,643	3,434	5,956	74	-	-	179
16 years	26,419	3,987	21,306	638	12	-	476
17 years	50,445	4,508	37,470	7,591	80	-	796
18 years	78,197	5,121	37,661	33,016	1,258	-	1,141
19 years	106,053	5,228	36,472	55,800	7,012	67	1,474
20-24 years	741,401	23,822	131,344	408,597	134,985	32,868	9,785
25-29 years	757,343	16,055	54,124	323,892	186,882	166,767	9,623
30-34 years	396,985	10,090	19,110	126,990	89,444	145,742	5,609
35-39 years	104,159	5,184	7,552	34,472	20,315	34,908	1,728
40 years and over	14,840	1,562	1,795	5,567	2,388	3,226	302
Black	504,450	23,555	149,562	210,035	80,451	33,642	7,205
Under 15 years	4,743	3,373	1,258	-	-	-	112
15-19 years	121,631	6,936	70,033	38,391	4,479	28	1,764
15 years	9,717	2,495	6,994	53	-	-	175
16 years	17,839	1,571	15,623	384	-	-	261
17 years	25,099	1,033	19,462	4,176	68	-	360
18 years	32,468	967	15,526	14,652	868	-	455
19 years	36,508	870	12,428	19,126	3,543	28	513
20-24 years	175,591	4,360	43,536	86,869	33,024	5,407	2,395
25-29 years	121,080	4,020	21,135	52,495	27,176	14,527	1,727
30-34 years	59,372	2,778	8,976	23,990	12,344	10,452	832
35-39 years	18,337	1,581	3,624	6,947	3,009	2,869	307
40 years and over	3,696	507	1,000	1,343	419	359	68

¹Includes races other than white and black.

NOTE: Excludes data for California, Texas, and Washington, which did not require reporting of educational attainment of mother.

Table 22. Live births by age of mother and specified race of child: United States, 1982

[Based on 100 percent of births in selected States and on a 50-percent sample of births in all other States; see Technical notes]

Age of mother	All races ¹	White	Black	American Indian ²	Chinese	Japanese	Filipino	Other Asian or Pacific Islander
All ages	3,680,537	2,942,054	592,641	41,289	13,716	8,686	16,640	56,442
Under 15 years	9,773	4,153	5,395	126	1	4	12	53
15-19 years	513,758	357,948	140,534	8,749	197	336	1,125	3,411
15 years	25,091	13,346	11,093	407	8	16	39	130
16 years	57,348	35,629	20,235	975	10	24	99	258
17 years	98,723	66,894	28,954	1,777	35	65	184	544
18 years	144,937	102,954	37,664	2,500	40	86	329	968
19 years	187,659	139,125	42,588	3,090	104	145	474	1,511
20-24 years	1,205,979	958,509	207,640	15,364	1,717	1,480	3,749	14,341
25-29 years	1,151,934	961,053	143,748	10,236	5,372	3,174	5,521	20,253
30-34 years	605,273	503,847	69,781	4,886	5,056	2,836	4,189	13,351
35-39 years	167,920	136,664	21,341	1,627	1,190	769	1,727	4,168
40-44 years	24,664	19,027	3,966	287	168	82	301	771
45-49 years	1,236	853	236	14	15	5	16	94

¹Includes births of other races which are not shown separately.²Includes births to Aleuts and Eskimos.

Table 23. Live births by birth weight and number and percent low birth weight, by specified race of child: United States, 1982

[Based on 100 percent of births in selected States and on a 50-percent sample of births in all other States; see Technical notes]

Birth weight ¹	All races ²	White	Black	American Indian ³	Chinese	Japanese	Filipino	Other Asian or Pacific Islander
Number								
Total	3,680,537	2,942,054	592,641	41,289	13,716	8,686	16,640	56,442
Less than 2,500 grams	248,104	165,285	73,360	2,540	729	535	1,147	3,869
Less than 500 grams	3,992	2,289	1,622	31	5	5	8	25
500-999 grams	16,673	10,172	5,975	177	28	22	56	213
1,000-1,499 grams	22,547	14,546	7,273	219	67	51	68	273
1,500-1,999 grams	47,293	31,453	14,258	476	119	77	169	632
2,000-2,499 grams	157,599	106,825	44,232	1,637	510	380	846	2,726
2,500-2,999 grams	593,266	421,414	143,032	6,136	2,667	1,831	3,738	12,651
3,000-3,499 grams	1,357,866	1,070,533	227,680	15,119	6,220	3,641	7,067	24,030
3,500-3,999 grams	1,074,913	921,481	116,987	12,385	3,315	2,120	3,690	12,589
4,000-4,499 grams	331,283	296,232	25,753	3,998	653	480	832	2,758
4,500-4,999 grams	61,009	55,281	4,083	859	97	69	121	398
5,000 grams or more	8,260	7,304	699	138	16	5	15	63
Not stated	5,836	4,524	1,047	114	19	5	30	84
Percent								
Less than 2,500 grams	6.8	5.6	12.4	6.2	5.3	6.2	6.9	6.9

¹Equivalents of the gram weights in pounds and ounces are shown in table 15.²Includes births of other races which are not shown separately.³Includes births to Aleuts and Eskimos.

Table 24. Live births by month of pregnancy prenatal care began, age of mother, and race of child: United States, 1982

[Based on 100 percent of births in selected States and on a 50-percent sample of births in all other States; see Technical notes]

Age of mother and race of child	Total	Month of pregnancy prenatal care began					
		1st and 2d month	3d month	4th-6th month	7th-9th month	No prenatal care	Not stated
All races¹							
All ages	3,680,537	1,886,139	850,793	664,584	141,954	54,610	82,457
Under 15 years	9,773	1,585	1,574	4,222	1,390	614	388
15-19 years	513,758	153,366	119,115	170,304	41,001	15,463	14,509
15 years	25,091	5,160	4,907	10,223	2,805	1,104	892
16 years	57,348	13,443	12,324	22,156	5,542	2,083	1,800
17 years	98,723	26,018	22,678	35,514	8,426	3,129	2,958
18 years	144,937	43,186	34,127	47,801	11,560	4,327	3,936
19 years	187,659	65,559	45,079	54,610	12,668	4,820	4,923
20-24 years	1,205,979	577,310	288,382	240,254	52,363	19,731	27,939
25-29 years	1,151,934	682,457	260,792	147,499	27,629	10,703	22,854
30-34 years	605,273	367,583	135,910	71,354	12,966	5,236	12,224
35-39 years	167,920	92,729	38,930	25,144	5,156	2,198	3,763
40 years and over	25,900	11,109	6,090	5,807	1,449	665	780
White							
All ages	2,942,054	1,598,976	685,448	467,518	95,995	34,269	59,848
Under 15 years	4,153	746	701	1,701	592	276	137
15-19 years	357,948	114,279	86,678	112,024	26,542	9,153	9,272
15 years	13,346	2,950	2,775	5,128	1,503	548	442
16 years	35,629	8,774	8,005	13,205	3,446	1,147	1,052
17 years	66,894	18,538	16,100	23,226	5,401	1,830	1,799
18 years	102,954	32,366	25,338	32,414	7,609	2,641	2,586
19 years	139,125	51,651	34,460	38,051	8,583	2,987	3,393
20-24 years	958,509	485,726	232,103	171,547	36,082	12,736	20,315
25-29 years	961,053	593,451	217,424	107,002	18,999	6,755	17,422
30-34 years	503,847	317,538	112,182	52,470	8,954	3,400	9,303
35-39 years	136,664	78,325	31,667	18,545	3,771	1,490	2,866
40 years and over	19,880	8,911	4,693	4,229	1,055	459	533
Black							
All ages	592,641	221,187	132,266	166,644	37,027	17,962	17,555
Under 15 years	5,395	813	844	2,432	750	318	238
15-19 years	140,534	35,028	29,133	53,180	12,792	5,802	4,599
15 years	11,093	2,086	2,015	4,820	1,225	529	418
16 years	20,235	4,359	4,032	8,338	1,925	890	691
17 years	28,954	6,803	5,960	11,243	2,711	1,209	1,028
18 years	37,664	9,695	7,870	14,007	3,413	1,518	1,161
19 years	42,588	12,085	9,256	14,772	3,518	1,656	1,301
20-24 years	207,640	75,809	47,124	59,077	13,328	6,178	6,124
25-29 years	143,748	65,564	32,746	31,938	6,230	3,366	3,904
30-34 years	69,781	33,218	16,427	13,923	2,688	1,553	1,972
35-39 years	21,341	9,273	5,009	4,919	977	587	576
40 years and over	4,202	1,482	983	1,175	262	158	142

¹Includes races other than white and black.

Table 25. Live births by month of pregnancy prenatal care began, number of prenatal visits, and race of child: Total of 49 reporting States and the District of Columbia, 1982

[Based on 100 percent of births in selected States and on a 50-percent sample of births in all other States; see Technical notes]

Number of prenatal visits and race of child	Month of pregnancy prenatal care began						
	All births	1st and 2d month	3d month	4th-6th month	7th-9th month	No prenatal care	Not stated
All races¹							
Total	3,250,640	1,659,939	752,330	587,406	126,765	50,381	73,819
No visits	50,381	50,381	...
1-2 visits	64,029	8,251	5,699	17,225	31,252	...	1,602
3-4 visits	112,459	13,346	13,388	48,870	35,330	...	1,525
5-6 visits	219,246	41,791	44,403	101,514	29,656	...	1,882
7-8 visits	365,307	114,969	95,385	136,671	16,042	...	2,240
9-10 visits	679,054	312,806	205,455	149,317	7,765	...	3,711
11-12 visits	885,446	570,026	229,646	80,020	2,949	...	2,805
13-14 visits	435,180	317,960	88,918	26,264	852	...	1,186
15-16 visits	231,543	174,642	42,080	13,517	582	...	722
17-18 visits	50,518	38,220	9,187	2,836	117	...	158
19 visits or more	60,821	46,347	9,872	4,113	188	...	301
Not stated	96,656	21,581	8,297	7,059	2,032	...	57,687
White							
Total	2,600,461	1,416,804	607,803	407,301	84,187	30,770	53,596
No visits	30,770	30,770	...
1-2 visits	38,598	5,434	3,445	9,319	19,483	...	917
3-4 visits	69,311	8,425	8,186	28,933	22,866	...	901
5-6 visits	148,220	29,913	30,888	66,003	20,231	...	1,185
7-8 visits	272,023	91,203	73,619	94,300	11,376	...	1,525
9-10 visits	545,723	262,505	166,282	108,739	5,469	...	2,728
11-12 visits	757,974	499,231	193,507	60,842	2,167	...	2,227
13-14 visits	376,710	279,608	75,571	19,976	634	...	921
15-16 visits	197,790	151,882	35,084	9,876	400	...	548
17-18 visits	42,778	33,005	7,490	2,087	84	...	112
19 visits or more	49,781	38,902	7,710	2,824	122	...	223
Not stated	70,783	16,696	6,021	4,402	1,355	...	42,309
Black							
Total	548,032	199,877	121,450	157,001	35,417	17,557	16,730
No visits	17,557	17,557	...
1-2 visits	22,138	2,486	2,011	7,156	9,902	...	583
3-4 visits	37,466	4,318	4,544	17,756	10,351	...	497
5-6 visits	61,443	10,240	11,755	31,084	7,796	...	568
7-8 visits	79,405	19,962	18,397	36,739	3,759	...	548
9-10 visits	112,077	41,383	33,058	34,923	1,916	...	797
11-12 visits	104,041	57,025	29,445	16,446	660	...	465
13-14 visits	46,693	30,089	10,819	5,372	190	...	223
15-16 visits	28,588	19,054	5,988	3,238	162	...	146
17-18 visits	6,594	4,396	1,459	671	30	...	38
19 visits or more	9,829	6,572	1,944	1,191	62	...	60
Not stated	22,201	4,352	2,030	2,425	589	...	12,805

¹Includes races other than white and black.

NOTE: Excludes data for California, which did not require reporting of number of prenatal visits.

Table 26. Live births by period of gestation, birth weight, and race of child: Total of 49 reporting States and the District of Columbia, 1982

[Based on 100 percent of births in selected States and on a 50-percent sample of births in all other States; see Technical notes]

Birth weight ¹ and race of child	All births	Period of gestation								Not stated
		Under 28 weeks	28-31 weeks	32-35 weeks	36 weeks	37-39 weeks	40 weeks	41 weeks	42 weeks and over	
All races²										
Total.....	3,652,807	25,673	39,160	160,737	108,797	1,313,715	779,898	545,797	546,634	132,396
Under 500 grams.....	3,955	3,038	135	62	7	64	31	57	34	527
500-999 grams.....	16,573	10,394	2,756	712	99	402	183	173	205	1,649
1,000-1,499 grams...	22,383	3,489	9,923	4,498	590	1,098	296	223	435	1,831
1,500-1,999 grams...	46,906	1,257	8,817	19,579	3,356	7,230	1,430	964	1,364	2,909
2,000-2,499 grams...	156,138	1,266	4,261	40,673	17,767	55,025	12,796	7,231	9,729	7,390
2,500-2,999 grams...	587,469	1,745	4,884	40,958	37,716	273,245	92,527	52,692	60,426	23,276
3,000-3,499 grams...	1,346,758	2,352	5,019	34,063	32,309	554,495	299,790	186,139	186,358	46,233
3,500-3,999 grams...	1,068,193	1,152	2,486	15,774	13,182	332,938	273,086	203,626	192,054	33,895
4,000-4,499 grams...	329,833	289	519	3,486	2,971	75,396	83,805	77,027	75,923	10,417
4,500-4,999 grams...	60,810	59	103	553	538	11,272	13,841	15,411	17,101	1,932
5,000 grams or over...	8,211	67	30	102	130	1,542	1,569	1,881	2,563	327
Not stated.....	5,578	565	227	277	132	1,008	544	373	442	2,010
White										
Total.....	2,919,007	15,069	24,353	106,935	77,886	1,025,823	648,196	465,081	455,461	100,203
Under 500 grams.....	2,260	1,767	66	37	5	39	16	39	22	269
500-999 grams.....	10,089	6,399	1,759	412	53	228	71	104	100	963
1,000-1,499 grams...	14,402	2,089	6,638	2,852	388	714	182	152	261	1,126
1,500-1,999 grams...	31,126	643	5,899	13,186	2,234	4,908	945	616	846	1,849
2,000-2,499 grams...	105,604	606	2,323	28,321	12,253	37,019	8,754	4,918	6,727	4,683
2,500-2,999 grams...	416,632	908	2,451	26,546	26,957	193,658	68,141	39,073	43,454	15,444
3,000-3,499 grams...	1,061,387	1,233	2,867	21,266	23,194	432,228	242,741	153,662	149,289	34,907
3,500-3,999 grams...	915,834	776	1,706	10,938	9,855	279,495	237,518	180,041	167,427	28,078
4,000-4,499 grams...	294,997	220	389	2,694	2,301	65,695	75,428	70,192	68,930	9,148
4,500-4,999 grams...	55,110	44	91	423	438	9,822	12,568	14,232	15,719	1,773
5,000 grams or over...	7,265	44	22	73	113	1,281	1,398	1,733	2,326	275
Not stated.....	4,301	340	142	187	95	736	434	319	360	1,688
Black										
Total.....	591,907	9,916	13,542	47,171	26,453	230,739	103,346	63,042	73,100	24,598
Under 500 grams.....	1,620	1,217	67	20	2	24	15	18	11	246
500-999 grams.....	5,968	3,716	921	279	43	138	98	64	90	619
1,000-1,499 grams...	7,268	1,300	3,013	1,508	179	335	99	63	154	617
1,500-1,999 grams...	14,247	579	2,677	5,747	1,012	2,077	455	311	452	937
2,000-2,499 grams...	44,172	626	1,771	10,889	4,819	15,557	3,551	2,008	2,687	2,264
2,500-2,999 grams...	142,833	795	2,251	12,673	9,263	65,725	20,051	11,326	14,567	6,182
3,000-3,499 grams...	227,405	1,042	1,923	11,129	7,685	97,036	44,881	25,580	29,748	8,381
3,500-3,999 grams...	116,849	336	713	4,048	2,773	41,125	26,904	17,747	19,140	4,063
4,000-4,499 grams...	25,725	62	111	669	560	7,226	6,187	4,948	5,078	884
4,500-4,999 grams...	4,082	14	12	101	77	1,102	898	820	950	108
5,000 grams or over...	697	20	8	26	11	197	128	109	159	39
Not stated.....	1,041	209	75	82	29	197	79	48	64	258

¹Equivalents of the gram weights in pounds and ounces are shown in table 15.

²Includes races other than white and black.

NOTE: Excludes data for New Mexico, which did not require reporting of first day of last normal menstrual period.

Table 27. Live births by 1- and 5-minute Apgar scores and race of child: Total of reporting States, 1982

[Based on 100 percent of births in selected States and on a 50-percent sample of births in all other States; see Technical notes]

Apgar score	Time of score and race of child					
	1-minute Apgar score ¹			5-minute Apgar score ²		
	All races ³	White	Black	All races ³	White	Black
Total	2,875,613	2,293,563	492,701	2,884,920	2,295,289	500,176
0	2,110	1,437	595	2,108	1,456	601
1	19,294	12,788	5,903	6,888	4,298	2,453
2	20,441	14,194	5,684	4,296	2,770	1,410
3	24,715	17,842	6,161	4,390	2,879	1,400
4	35,973	26,895	8,027	6,063	4,107	1,785
5	61,073	47,089	12,217	11,269	7,732	3,220
6	114,280	90,820	20,161	23,044	16,782	5,702
7	296,588	240,339	47,237	56,742	42,830	12,375
8	996,392	807,376	154,476	242,812	190,951	44,471
9	1,160,081	921,451	204,722	1,691,636	1,342,708	292,156
10	71,919	57,618	12,610	770,584	627,326	122,761
Not stated	72,747	55,714	14,908	65,088	51,450	11,842

¹Total of 46 reporting States. Excludes data for California, Delaware, District of Columbia, Oklahoma, and Texas, which did not require reporting of 1-minute Apgar scores.

²Total of 46 reporting States and the District of Columbia. Excludes data for California, Delaware, Oklahoma, and Texas, which did not require reporting of 5-minute Apgar scores.

³Includes races other than white and black.

Table 28. Live births by 1- and 5-minute Apgar scores and race of child: Total of 46 reporting States, 1982

[Based on 100 percent of births in selected States and on a 50-percent sample of births in all other States; see Technical notes]

1-minute score and race of child	Total	5-minute score										Not stated	
		0	1	2	3	4	5	6	7	8	9		10
All races ¹	2,875,613	2,106	6,851	4,269	4,355	6,037	11,194	22,945	56,481	241,857	1,684,638	770,021	64,859
0	2,110	649	431	253	188	146	122	96	43	60	59	23	40
1	19,294	831	4,754	1,523	1,645	1,692	1,995	2,116	1,784	1,572	1,019	96	267
2	20,441	198	860	1,629	1,135	1,723	2,481	3,409	3,324	3,134	2,157	161	230
3	24,715	62	247	304	729	1,045	2,591	4,263	5,379	5,520	4,082	301	192
4	35,973	21	105	133	162	653	1,723	5,083	8,496	10,399	8,331	670	197
5	61,073	19	61	98	124	198	1,060	4,397	13,481	20,726	18,999	1,685	225
6	114,280	24	53	65	105	180	291	2,158	14,195	45,454	47,058	4,380	317
7	296,588	38	65	90	83	138	325	566	7,007	87,825	184,685	15,290	476
8	996,392	110	92	91	112	155	335	467	1,760	62,936	830,709	98,434	1,191
9	1,160,081	140	103	36	39	55	176	231	652	2,778	577,165	576,902	1,804
10	71,919	6	5	-	-	6	12	9	19	114	625	70,567	556
Not stated	72,747	8	75	47	33	46	83	150	341	1,339	9,749	1,512	59,364
White	2,293,563	1,454	4,298	2,767	2,879	4,105	7,728	16,766	42,794	190,827	1,341,367	627,170	51,408
0	1,437	446	270	170	126	109	82	73	35	41	39	15	31
1	12,788	580	2,974	1,002	1,071	1,088	1,358	1,457	1,183	1,098	721	78	178
2	14,194	129	535	1,049	756	1,194	1,720	2,423	2,338	2,201	1,573	132	144
3	17,842	41	155	192	499	728	1,808	3,085	3,896	4,019	3,054	235	130
4	26,895	13	67	87	103	453	1,217	3,773	6,331	7,786	6,349	565	151
5	47,089	11	27	57	85	146	741	3,317	10,370	15,859	14,932	1,368	176
6	90,820	15	34	41	72	123	187	1,615	11,116	35,875	37,880	3,608	254
7	240,339	27	43	59	50	94	218	410	5,456	69,991	150,661	12,972	358
8	807,376	82	63	62	73	108	231	348	1,352	50,816	669,704	83,591	946
9	921,451	101	84	22	27	36	117	172	502	2,252	449,607	467,043	1,488
10	57,618	4	3	-	-	4	6	7	13	95	548	56,463	475
Not stated	55,714	5	43	26	17	22	43	86	202	794	6,299	1,100	47,077
Black	492,701	601	2,418	1,386	1,365	1,761	3,149	5,621	12,152	43,650	286,577	122,363	11,658
0	595	181	154	70	52	31	33	22	7	16	15	7	7
1	5,903	240	1,688	478	521	541	555	610	531	407	235	14	83
2	5,684	66	307	546	359	492	694	912	876	833	497	20	82
3	6,161	19	86	99	218	291	714	1,072	1,322	1,332	891	58	59
4	8,027	8	35	43	55	183	471	1,176	1,923	2,307	1,699	85	42
5	12,217	8	32	39	36	51	303	980	2,769	4,221	3,469	264	45
6	20,161	9	19	23	31	54	96	483	2,724	8,311	7,686	668	57
7	47,237	10	22	29	31	38	95	135	1,375	15,239	28,260	1,899	104
8	154,476	21	26	26	36	41	98	111	357	10,010	131,164	12,385	201
9	204,722	34	15	14	11	19	51	56	133	460	109,485	94,169	275
10	12,610	2	2	-	-	2	3	2	6	19	63	12,438	73
Not stated	14,908	3	32	19	15	18	36	62	129	495	3,113	356	10,630

¹Includes races other than white and black.

NOTE: Excludes data for California, Delaware, District of Columbia, Oklahoma, and Texas, which did not require the reporting of both 1- and 5-minute Apgar scores.

Technical notes

Sources of data

Data shown in this report are based on 100 percent of the birth certificates of 45 States that provided data through the Vital Statistics Cooperative Program. These States accounted for 84 percent of all births in the United States in 1982. Data from the remaining areas (Arizona, California, Delaware, the District of Columbia, Georgia, and North Dakota) are based on a 50-percent sample of birth certificates filed in those areas.

Many of the topics discussed in this brief report are covered in more analytical detail in other reports published by the National Center for Health Statistics. The topics include first births to older mothers,¹ birth intervals,³ Asian births,⁴ teenage childbearing,⁷ midwife-attended births,⁸ low birth weight,⁹ births to unmarried women,¹⁰ prenatal care,¹¹ and Apgar score.¹² Also available are a methodological report on imputing length of gestation,⁵ three brief reports on births of Hispanic parentage,¹³⁻¹⁵ and a report presenting birth and fertility rates by State for 1980.¹⁶

Population denominators

Birth and fertility rates for 1982 are based on populations estimated as of July 1, 1982.^{17,18} The estimates are based on the 1980 census count. The 1980 census counts by race were modified to be consistent with Office of Management and Budget categories and historical categories for birth data. The modification procedures are discussed in detail in a U.S. Bureau of the Census report.¹⁹

Births by marital status of mother

Beginning with 1980 data, national estimates of births to unmarried women are derived from two sources. For 41 States and the District of Columbia, marital status is reported directly on the birth certificate; for the remaining 9 States, which lack such an item, marital status is inferred from a comparison of the child's and parents' surnames. This procedure represents a substantial departure from the method used prior to 1980 to prepare national estimates of births to unmarried women. The

previous method assumed that the incidence of births to unmarried women in States with no direct question on marital status was the same as the incidence in reporting States in the same geographic division.

The new method represents an attempt to use related information on the birth certificate to improve the quality of national data on this topic as well as to provide data for the individual nonreporting States. The method is based on a comparison of the child's surname, the mother's present and maiden surnames, and the father's surname. Briefly, a birth is classified as occurring to a married woman if the parents' surnames are the same, or if the child's and father's surnames are the same and the mother's current surname is missing. A birth is classified as occurring to an unmarried woman if the father's name is missing, if the parents' surnames are different, or if the father's and child's surnames are different and the mother's current surname is missing. An analysis of the effect of the methodological change on the data for 1980 indicated that the change had significantly greater impact on the figures for white births, particularly those to mothers aged 20 years and older, than on the figures for other racial or age groups. An evaluation study of the new method and its continuing validity for California data (the largest nonreporting State) is in preparation.

Computation of percent distributions and medians

Births of unknown live-birth order, attendant at birth, educational attainment of mother, month of pregnancy prenatal care began, prenatal visits, and birth weight were subtracted from figures for total births used as denominators before percent distributions and medians were computed. The percent distributions by attendant at birth shown in table 12 for 1975-81 have been revised to exclude births for which the attendant was unspecified. The numbers of births with unspecified attendant have shown considerable year-to-year fluctuation in recent years. By excluding these births from the percent distributions, the trends in proportions of births with each specified attendant can be clearly seen.

Computations of median years of school completed and median number of prenatal visits were based on tabulations of ungrouped data.

NOTE: A list of references follows the text.

This report presents summary tabulations from the final natality statistics for 1982. More detailed tabulations for 1982 will be published in *Vital Statistics of the United States, Volume I—Natality*. Prior to the publication of that volume, the National Center for Health Statistics will respond to requests for unpublished data whenever possible.

Symbols

- Data not available
 - ... Category not applicable
 - Quantity zero
 - 0.0 Quantity more than zero but less than 0.05
 - Z Quantity more than zero but less than 500 where numbers are rounded to thousands
 - * Figure does not meet standards of reliability or precision
-

Suggested Citation

National Center for Health Statistics: Advance report of final natality statistics, 1982. *Monthly Vital Statistics Report*. Vol. 33, No. 6 Supp. DHHS Pub. No. (PHS) 84-1120. Public Health Service. Hyattsville, Md., Sept. 1984.

Copyright Information

This report may be reprinted without further permission.

U.S. DEPARTMENT OF HEALTH AND
HUMAN SERVICES
Public Health Service
National Center for Health Statistics
3700 East-West Highway
Hyattsville, Maryland 20782

FIRST CLASS MAIL POSTAGE & FEES PAID PHS/NCHS PERMIT No. G-281

OFFICIAL BUSINESS
PENALTY FOR PRIVATE USE, \$300

To receive this publication regularly, contact the National Center for Health Statistics by calling 301 436-NCHS.
