

# *Bartonella* spp. Infections Identified by Molecular Methods, United States

David W. McCormick, Sara L. Rassouljian-Barrett, Daniel R. Hoogestraat, Stephen J. Salipante, Dhruva SenGupta, Elizabeth A. Dietrich, Brad T. Cookson, Grace E. Marx,<sup>1</sup> Joshua A. Lieberman<sup>1</sup>



In support of improving patient care, this activity has been planned and implemented by Medscape, LLC and Emerging Infectious Diseases. Medscape, LLC is jointly accredited with commendation by the Accreditation Council for Continuing Medical Education (ACCME), the Accreditation Council for Pharmacy Education (ACPE), and the American Nurses Credentialing Center (ANCC), to provide continuing education for the healthcare team.

Medscape, LLC designates this Journal-based CME activity for a maximum of 1.00 **AMA PRA Category 1 Credit(s)**<sup>™</sup>. Physicians should claim only the credit commensurate with the extent of their participation in the activity.

Successful completion of this CME activity, which includes participation in the evaluation component, enables the participant to earn up to 1.0 MOC points in the American Board of Internal Medicine's (ABIM) Maintenance of Certification (MOC) program. Participants will earn MOC points equivalent to the amount of CME credits claimed for the activity. It is the CME activity provider's responsibility to submit participant completion information to ACCME for the purpose of granting ABIM MOC credit.

All other clinicians completing this activity will be issued a certificate of participation. To participate in this journal CME activity: (1) review the learning objectives and author disclosures; (2) study the education content; (3) take the post-test with a 75% minimum passing score and complete the evaluation at <http://www.medscape.org/journal/eid>; and (4) view/print certificate. For CME questions, see page 677.

**Release date: February 23, 2023; Expiration date: February 23, 2024**

## Learning Objectives

Upon completion of this activity, participants will be able to:

- Assess the microbiologic characteristics of identified bartonellosis cases, based on a series of broad-range and organism-specific molecular assays at a large clinical reference laboratory
- Evaluate demographic and clinical characteristics of patients with bartonellosis, based on a series of broad-range and organism-specific molecular assays at a large clinical reference laboratory
- Determine the clinical implications of the demographic, clinical, and microbiologic characteristics of patients with bartonellosis, based on a series of broad-range and organism-specific molecular assays at a large clinical reference laboratory

## CME Editor

**Susan Zunino, PhD**, Technical Writer/Editor, Emerging Infectious Diseases. *Disclosure: Susan Zunino, PhD, has no relevant financial relationships.*

## CME Author

**Laurie Barclay, MD**, freelance writer and reviewer, Medscape, LLC. *Disclosure: Laurie Barclay, MD, has no relevant financial relationships.*

## Authors

**David W. McCormick, MD, MPH; Sara L. Rassouljian-Barrett, MS; Daniel R. Hoogestraat, BS, MB(ASCP); Stephen J. Salipante, MD, PhD; Dhruva SenGupta, PhD; Elizabeth A. Dietrich, PhD; Brad T. Cookson, MD, PhD; Grace E. Marx, MD, MPH; Joshua A. Lieberman, MD, PhD.**

<sup>1</sup>These senior authors contributed equally to this article.

Molecular methods can enable rapid identification of *Bartonella* spp. infections, which are difficult to diagnose by using culture or serology. We analyzed clinical test results of PCR that targeted bacterial 16S rRNA hypervariable V1–V2 regions only or in parallel with PCR of *Bartonella*-specific *ribC* gene. We identified 430 clinical specimens infected with *Bartonella* spp. from 420 patients in the United States. Median patient age was 37 (range 1–79) years; 62% were male. We identified *B. henselae* in 77%, *B. quintana* in 13%, *B. clarridgeiae* in 1%, *B. vinsonii* in 1%, and *B. washoensis* in 1% of specimens. Eighty-three percent of specimens with *B. quintana* were cardiac specimens; 34% of specimens with *B. henselae* were lymph nodes. We detected novel or uncommon *Bartonella* spp. in 9 patients. Molecular diagnostic testing can identify *Bartonella* spp. infections, including uncommon and undescribed species, and might be particularly useful for patients who have culture-negative endocarditis or lymphadenitis.

*Bartonella* spp. are fastidious, gram-negative intracellular bacteria that are transmitted to humans by insect vectors. The genus includes 12 species associated with human infection: *B. henselae*, *B. quintana*, *B. bacilliformis*, *B. elizabethae*, *B. vinsonii*, *B. koehlerae*, *B. clarridgeiae*, *B. alsatica*, *B. doshiae*, *B. grahamii*, *B. rattimassiliensis*, and *B. tribocorum* (1,2). Bartonellosis cases are not nationally notifiable in the United States, limiting knowledge of disease epidemiology.

In the United States, *B. henselae* is the most common pathogenic *Bartonella* spp.; ≈12,500 cases of infection and 500 hospitalizations occur annually (3). The most common clinical manifestation of *B. henselae* infection is cat-scratch disease (lymphadenopathy and fever after a cat scratch or bite), although infection can also cause hepatic lesions, ocular disease, osteomyelitis, and endocarditis (4,5). *B. quintana* infection is uncommon and incidence is unknown. Clinically, *B. quintana* infection can manifest as acute febrile illness or subacute endocarditis. *B. quintana* is transmitted by body lice and causes the most frequently reported vectorborne disease among persons experiencing homelessness (PEH); seroprevalence in the PEH population is 5%–15% (6–8). Manifestations of other *Bartonella* spp. infections are sporadically described in case reports, often as culture-negative endocarditis.

Serology is the diagnostic tool most frequently used to identify *Bartonella* spp. infections. However, serologic diagnosis is complicated by lack of species-

specific results, differences in use and interpretation of serologic assays among laboratories, and cross-reactivity with other pathogens, including *Chlamydia* spp. and *Coxiella burnetii* (9–15), which can lead to misdiagnosis and insufficient treatment. Bacterial cultures of blood or tissue can establish the diagnosis, but sensitivity of cultures is low because of the fastidious nature of *Bartonella* spp. and might result in underdiagnosis of infection. Combining enrichment culture techniques with molecular methods might increase detection of *Bartonella* spp. in blood or other clinical specimens (16).

Molecular detection of bacterial pathogens has emerged as an important clinical tool that can increase diagnostic yield compared with culture alone, particularly for detection of fastidious organisms (17). *Bartonella* spp. have been detected by using broad-range PCR-based assays that target conserved binding sites flanking regions of the rRNA gene and have species-specific variations (18) or by using organism-specific gene targets, such as *gltA* (19) and *ribC* (20). We describe the demographic, clinical, and microbiologic characteristics of patients with bartonellosis diagnosed by both broad-range and organism-specific molecular assays at a large clinical reference laboratory in Washington, USA.

## Materials and Methods

### Population

We included information for all patients who had an acceptable clinical specimen submitted to the University of Washington (Seattle, Washington, USA) Molecular Microbiology clinical diagnostic reference laboratory during 2003–2021. Acceptable specimen types were fresh frozen tissue, formalin-fixed paraffin embedded (FFPE) tissues, and body fluids other than blood. To identify *Bartonella* spp., we performed 16S rRNA sequencing by using broad-range PCR primers (PCR-16S) or next-generation sequencing (NGS-16S) or performed a *Bartonella henselae* and *B. quintana* bi-species-targeted PCR (BT-PCR) requested by the ordering clinician.

We evaluated patient information if the specimen had *Bartonella* spp. as the final species assignment, had sufficient material for testing, and was an acceptable specimen type for the assay performed and if the presence of PCR inhibitors was excluded

(inhibitors precluded ruling out *Bartonella* spp.). If a patient had multiple specimens submitted >30 days apart, we included only the information provided with the first positive specimen submission in the analysis. From the specimen submission form, we obtained the patient's sex and age, US state and healthcare facility where the specimen was submitted, specimen collection date, and specimen description (e.g., anatomic location).

### Ethics Approval

The study was approved by the University of Washington Institutional Review Board (approval no. STUDY00013877). This study was reviewed in accordance with policies and procedures of the Centers for Disease Control and Prevention and was determined to be exempt from Institutional Review Board requirements.

### Molecular Methods for *Bartonella* spp. Identification

The University of Washington Molecular Microbiology laboratory performed all clinical testing pursuant to its high-complexity Clinical Laboratory Improvements Amendments license and College of American Pathologists accreditation. Laboratory-developed processes were validated in accordance with standards set by the Clinical Laboratory Standards Institute and monitored for quality through regular proficiency testing, biannual external inspections by the College of American Pathologists, and incorporation of control reactions as prescribed by the Clinical Laboratory Improvements Amendments.

We performed DNA extraction as previously described for both fresh and FFPE tissue (21), except that we also validated and used multiple DNA extraction kits (QIAGEN) in 2021 because of COVID-19-related supply chain disruptions. We performed broad-range PCR amplification of the V1-V2 hypervariable region of the bacterial 16S rRNA gene (PCR-16S) as previously described (18). When sequencing results of 16S PCR products suggested mixed DNA templates, we performed amplicon-based NGS of the V1-V2 16S rRNA locus (NGS-16S) reflexively by using an Illumina Miseq instrument and 250 bp paired-end reads (22,23). Targeted detection of *Bartonella* spp. by BT-PCR incorporated broad-range 16S primers and 2 primer sets that amplified ribC alleles of *B. quintana* and *B. henselae*. The 16S primers also detect other *Bartonella* spp. but at a higher limit of detection: 100 templates per reaction for other *Bartonella* spp. compared with 5–25 for the *Bartonella* species-specific primers. We sequenced PCR products by using the Sanger method and assigned taxonomic

classification after BLAST analysis (24) by using both the National Center for Biotechnology Information public databases and a curated database containing type strains and RefSeq (<https://www.ncbi.nlm.nih.gov/refseq>) records (21,22). Each case was reviewed by 2 independent certified medical laboratory scientists and a board-certified pathologist (21).

### Description of Detected *Bartonella* spp.

When available, results from BT-PCR provided specific taxonomic classification of *Bartonella* spp. If BT-PCR results were unavailable, we used results from PCR-16S or NGS-16S. Some 16S rRNA gene V1-V2 sequences lacked sufficient specificity to provide a species-rank classification, either because of close homology to multiple species or lack of homology to any established species. Therefore, we retrospectively analyzed those sequences reported as *Bartonella* spp. by using BLAST to attempt a species-rank classification (defined as 99.7% sequence homology of the V1-V2 sequence). For diagnostic reporting purposes, species with validly published names according to the taxonomic code were identified at the species level in the clinical diagnostic report; otherwise, we identified the genus in accordance with the laboratory's standard operating procedures (Appendix, <https://wwwnc.cdc.gov/EID/article/29/3/22-1223-App1.pdf>) (22,23).

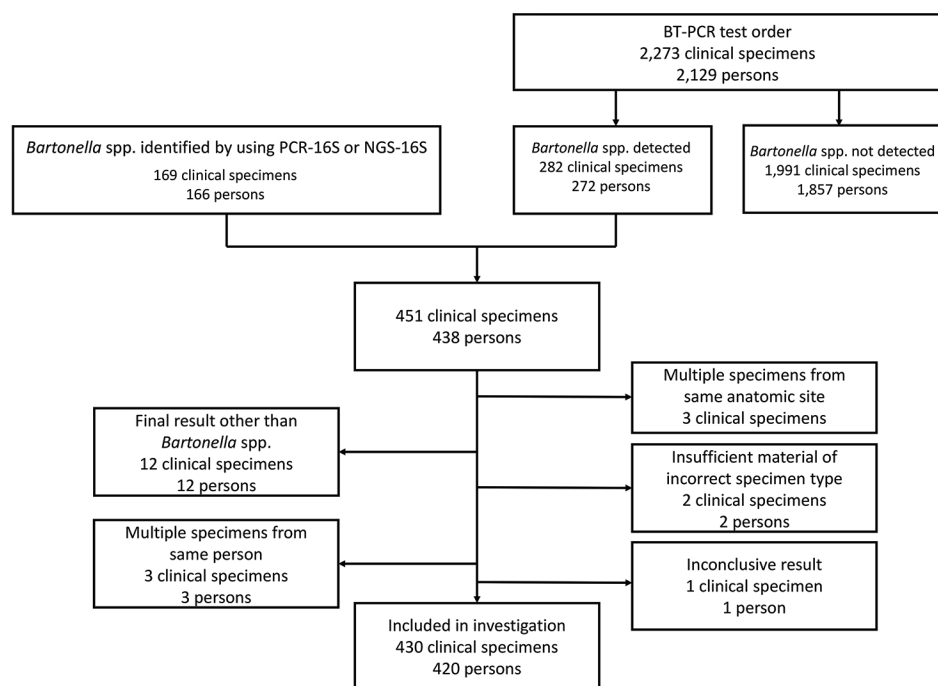
### Statistical Methods

We used  $\chi^2$  tests to compare categorical variables and Mann-Whitney U tests to compare age distributions. For comparisons between patients who had *B. quintana* infections and those who had *B. henselae* infections, we excluded information from patients who had specimen results indicating another *Bartonella* sp. We performed all statistical analyses by using R software version 4.0.3 (25).

To examine the proportion of specimens infected with *Bartonella* spp. by year and US state, we only included information for patients who had specimens submitted for BT-PCR. We excluded specimens submitted for PCR-16S that was used to evaluate a diverse array of bacterial pathogens. To calculate percent positivity of BT-PCR results, we collected data on ordering location (US state) and year of specimen submission for all BT-PCR assays, including those in which *Bartonella* spp. was not detected. Similar denominator data for PCR-16S and NGS-16S testing were not available.

### Results

We identified 430 clinical specimens from 420 patients that had molecular evidence of *Bartonella* spp.



**Figure 1.** Flow diagram showing clinical specimens included in the analysis in study of *Bartonella* spp. infections identified by molecular methods during 2003–2021 at an academic laboratory in the United States. If a patient had multiple specimens submitted  $\geq 30$  days apart, only information from the first *Bartonella*-positive specimen was included. Clinical specimens were tested for *Bartonella* spp. by PCR. A total of 430 specimens from 420 patients were included in the study. BT-PCR, *B. henselae* and *B. quintana* bispecific targeted PCR; NGS-16S, next-generation sequencing of 16S rRNA amplicons; PCR-16S, PCR of 16S rRNA gene followed by Sanger sequencing–based species identification.

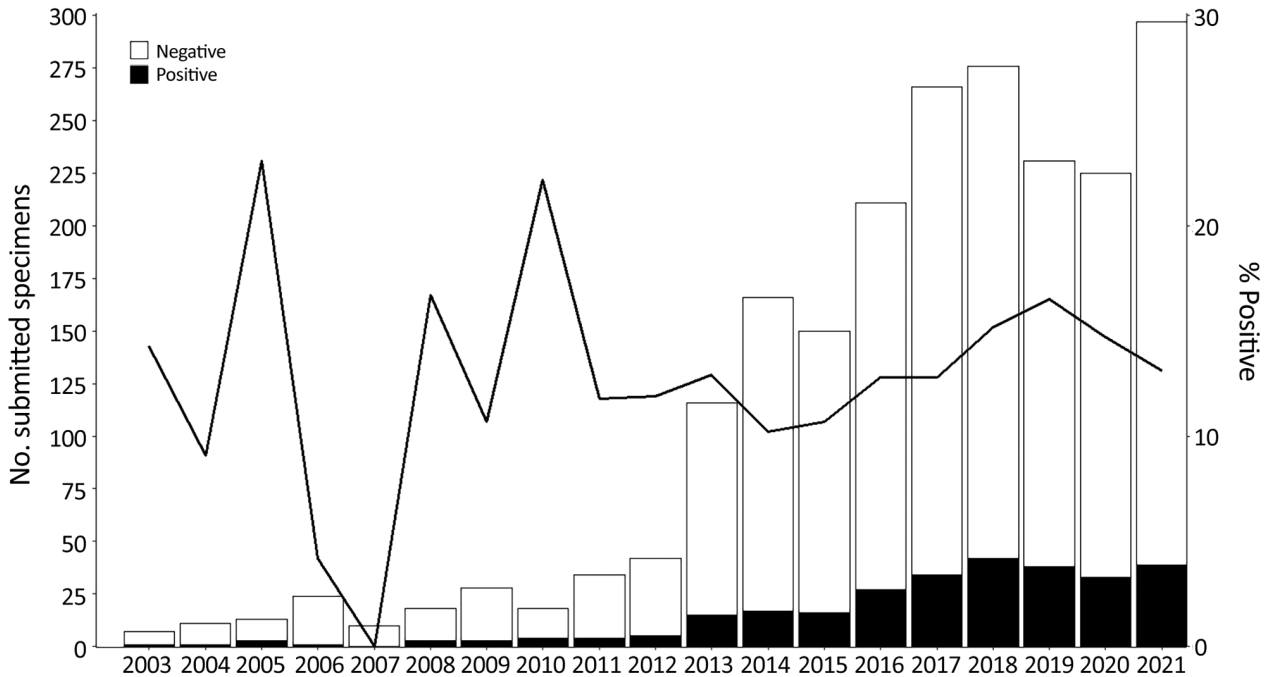
infection (Figure 1). We performed molecular testing by using BT-PCR alone on specimens from 149 (35%) patients, PCR-16S alone (no BT-PCR or NGS-16S) on specimens from 143 (34%) patients, reflexive NGS-16S on specimens from 5 (1%) patients for whom PCR-16S detected multiple bacterial DNA templates (precluding identification of *Bartonella* spp.), and both BT-PCR and PCR-16S sequencing on specimens from 121 (28%) patients. We detected *Bartonella* spp. DNA by both BT-PCR and NGS-16S in a specimen from 1 (<1%) patient and by BT-PCR, PCR-16S, and NGS-16S in a specimen from 1 (<1%) patient. We performed species-level identification for 272/272 (100%) specimens on which we performed BT-PCR, 163/265 (62%) specimens on which we performed PCR-16S sequencing, and 5/7 (71%) specimens on which we performed NGS-16S sequencing. Of 2,273 specimens submitted for BT-PCR during 2003–2021, we identified *Bartonella* spp. in 282 (12%) specimens from 272 patients.

We identified *Bartonella* spp. in a higher proportion of specimens submitted as unfixed tissue (187/1,276, 16%) than those submitted as FFPE tissue (97/997, 10%;  $p = 0.0002$ ). The total number of annual specimens submitted for BT-PCR testing increased over time; an annual median of 18 specimens during 2003–2012 increased to an annual median of 225 during 2013–2021 (Figure 2). Overall, we identified *Bartonella* spp. in 13% (260/1,938) of specimens

during 2013–2021; peak detection during this period occurred in 2019, when *Bartonella* spp. were detected in 17% of submitted specimens.

Among the 420 patients with detectable *Bartonella* spp., we identified *B. henselae* in specimens from 338 (80%) patients, *B. quintana* from 54 (13%), *B. clarridgeiae* from 4 (1%), *B. vinsonii* from 2 (1%), and *B. washoensis* (GenBank accession no. ON402466) from 1 (1%). We identified *Bartonella* at the genus level in the remaining 21 (5%) patients; of those, we identified 2 candidate species through subsequent analysis: 1 case of endocarditis caused by *Candidatus Bartonella mayotimonensis* (19) (GenBank accession no. ON402516) and a unique 16S sequence (tissue specimen; anatomic site not specified by ordering provider) which might represent a previously undescribed *Bartonella* sp. (GenBank accession no. ON402515) (Appendix Table). Of the 420 patients, 411 (98%) had a single submitted clinical specimen. Among the 9 patients with multiple specimens, only 1 *Bartonella* sp. was identified in each patient.

Among 397 patients who had *Bartonella* spp. detected in  $\geq 1$  specimen and available data regarding their sex, 245 (62%) were male (Table 1). A higher proportion of patients who had detectable *B. quintana* (41/50, 82%) were male compared with those who had detectable *B. henselae* (187/321, 58%;  $p = 0.001$ ). Age at the time of specimen collection was available for 415/420 (99%) patients; median age was



**Figure 2.** Number and percentage of specimens tested by using *Bartonella*-specific PCR during 2003–2021 in study of *Bartonella* spp. infections identified by molecular methods, United States. A total of 2,273 specimens were submitted for *B. henselae* and *B. quintana* bispecific targeted PCR. Bars indicate total numbers of submitted specimens each year and numbers of *Bartonella*-positive or negative specimens. Line indicates percentage of specimens that were positive for *Bartonella* spp.

37 years (range 1–79 years). Most (235/415, 57%) patients were 18–65 years of age, 134/415 (32%) were <18 years of age, and 45/415 (11%) were ≥65 years of age. Patients who had detectable *B. quintana* in ≥1 specimen (median age 52 years, interquartile range

[IQR] 45–60 years) were older than those who had detectable *B. henselae* (median age 32 years, IQR 11–54 years;  $p < 0.0001$ ).

Specimen descriptions were provided for all specimens. The most common specimens submitted were

**Table 1.** Demographic characteristics and specimen origin for patients who had *Bartonella* spp. detected by PCR in study of *Bartonella* spp. infections identified by molecular methods, United States\*

Variable	No. patients†	<i>B. henselae</i> , n = 338	<i>B. quintana</i> , n = 54	Other <i>Bartonella</i> spp.,‡ n = 28
Age, y, median (range)	415	32 (1–79)	52 (9–76)	30 (1–77)
<18	NA	122/335 (36)	2/52 (4)	10/28 (36)
18–65	NA	182/335 (54)	43/52 (83)	11/28 (39)
≥65	NA	31/335 (9)	7/52 (13)	7/28 (25)
Sex	397	NA	NA	NA
M	NA	187/321 (58)	41/50 (82)	17/26 (65)
F	NA	134/321 (42)	9/50 (18)	9/26 (35)
Specimen origin§	361	NA	NA	NA
Texas	48	38/48 (79)	4/48 (8)	6/48 (13)
Washington	46	34/46 (74)	8/46 (17)	4/46 (9)
Ohio	40	36/40 (90)	0/40 (0)	4/40 (10)
California	40	22/40 (55)	16/40 (40)	2/40 (5)
Michigan	30	27/30 (90)	3/30 (10)	0/30 (0)
Florida	27	26/27 (96)	0/27 (0)	1/27 (4)
Oregon	21	17/21 (80)	2/21 (10)	2/21 (10)
Pennsylvania	11	10/11 (91)	0/11 (0)	1/11 (9)
Other¶	NA	78/98 (80)	15/98 (15)	5/98 (5)

\*Values are no./total no. (%) unless otherwise indicated. NA, not applicable.

†Total number of patients for each indicated variable.

‡Includes *B. vinsonii* (n = 2), *B. clarridgeiae* (n = 4), *B. washoensis* (n = 1), and *Bartonella* sp. not otherwise specified (n = 21).

§Restricted to states with ≥10 patients who were infected with an identified *Bartonella* spp. to preserve anonymity.

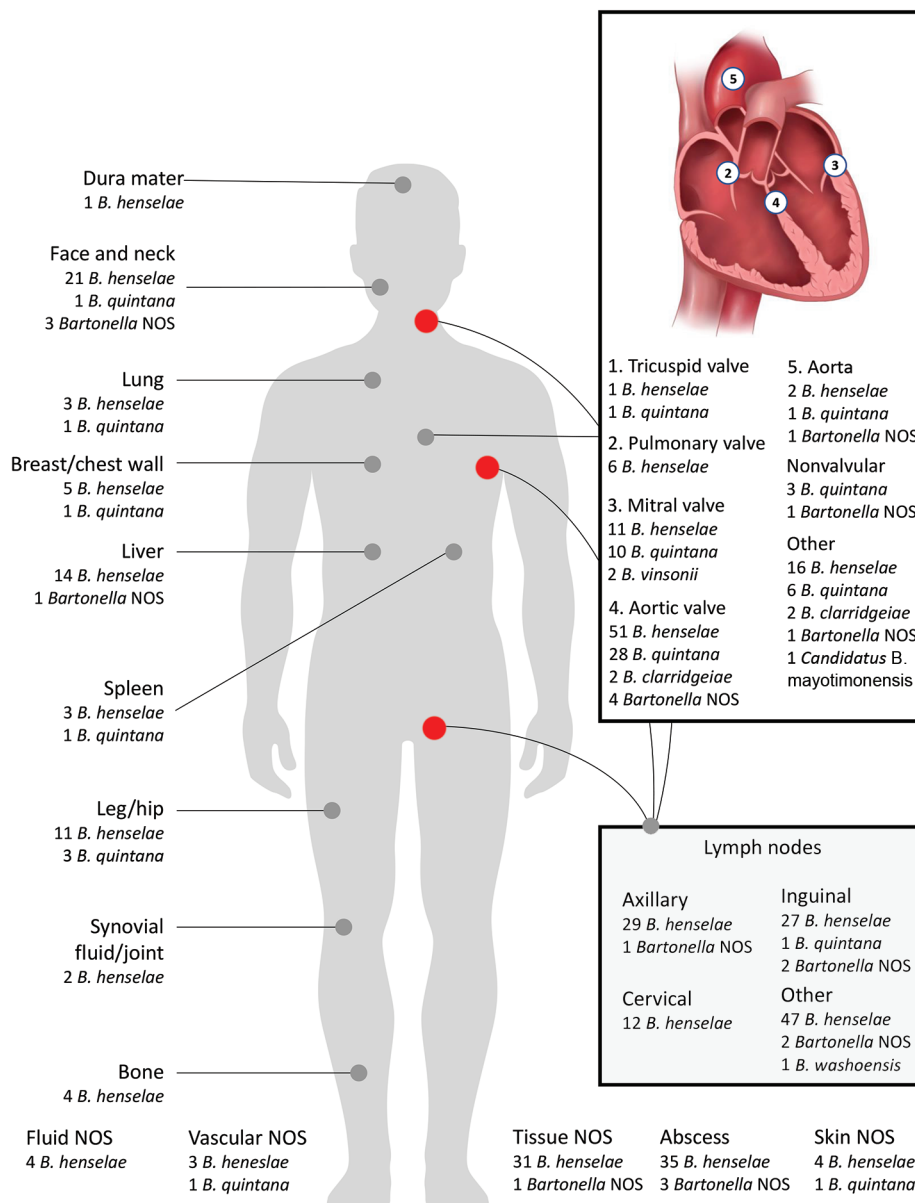
¶Alaska (n = 4), Alabama (n = 5), Arkansas (n = 5), Colorado (n = 5), Connecticut (n = 3), District of Columbia (n = 2), Georgia (n = 5), Hawaii (n = 2), Iowa (n = 3), Idaho (n = 1), Illinois (n = 3), Indiana (n = 6), Kentucky (n = 2), Louisiana (n = 1), Massachusetts (n = 5), Maine (n = 1), Montana (n = 5), Mississippi (n = 1), North Carolina (n = 8), Nebraska (n = 5), New Hampshire (n = 2), New Jersey (n = 1), New York (n = 3), Oklahoma (n = 1), South Carolina (n = 3), Tennessee (n = 5), Utah (n = 1), Virginia (n = 5), and Wisconsin (n = 5).

SYNOPSIS

cardiac (150/430, 35%), lymph node biopsy or aspirate (122/430, 29%), and abscess fluid (38/430, 9%) (Figure 3). We identified *B. quintana* more frequently in cardiac specimens (45/54, 83%) and *B. henselae* more frequently in lymph node specimens (115/338, 34%). We detected *B. henselae* in axillary (29/115, 25%), inguinal (27/115, 23%), and cervical (12/115, 10%) lymph node specimens and in cardiac (82/338, 24%), abscess (35/338, 10%), and liver (14/338, 4%) specimens. We detected *B. washoensis* in 1 lymph node specimen (unspecified anatomic location) and *B. vinsonii* (n = 2) and *B. clarridgeiae* (n = 4) only in cardiac specimens. For patients with *Bartonella* spp. identified in cardiac specimens, the aortic valve (85/140, 61%) was most

frequently involved, followed by the mitral valve (23/140, 16%). We detected *Bartonella* spp. in >1 valve from 8 (6%) patients. Of cardiac specimens that had ≥1 valve affected, 105/116 (90%) were from the left side of the heart.

We observed a higher proportion of *Bartonella* spp. in cardiac tissue of male (107/245, 44%) than female (24/152, 16%) patients. However, 57 (38%) female patients had *Bartonella* spp. detected in lymph node specimens compared with 61 (25%) male patients, and 71 (47%) female patients had *Bartonella* spp. detected in other (not cardiac or lymph node) specimen types, compared with 77 (31%) male patients (p<0.0001) (Table 2). For patients <18 years of age, we detected *Bartonella* spp.



**Figure 3.** Frequency of *Bartonella* spp. from different anatomic sites identified during 2003–2021 in study of *Bartonella* spp. infections identified by molecular methods, United States. Multiple specimens were submitted for 9 patients. We detected *Bartonella* spp. in both splenic and cardiac specimens from 1 patient, in 2 cardiac specimens each from 7 patients, and in 3 cardiac specimens from 1 patient. If we detected *Bartonella* spp. on multiple valve specimens, those were included in the total count for all involved valves. For the heart valve inset, other sites are cardiac tissue NOS (n = 18), right ventricular outflow tract conduit (n = 3), pacemaker or implantable cardiac device lead (n = 4), and coronary cusp (n = 1). For the lymph node inset, other sites are lymph node NOS (n = 38), supraclavicular (n = 3), submental (n = 2), mesenteric (n = 1), preauricular (n = 1), submandibular (n = 1), epitrochlear (n = 1), jugular (n = 1), iliac (n = 1), and paraspinous (n = 1). NOS, not otherwise specified.

**Table 2.** Categorical age and sex of infected persons grouped by specimen type in study of *Bartonella* spp. infections identified by molecular methods, United States

Variable	No. (%) specimens			p value†
	Cardiac, n = 140	Lymph node, n = 122	Other,* n = 158	
Age, y				<0.0001
<18, n = 134	5 (4)	52 (39)	77 (57)	
18–65, n = 236	106 (45)	66 (27)	64 (27)	
≥65, n = 45	27 (60)	3 (7)	15 (33)	
Sex				<0.0001
M, n = 245	107 (44)	61 (25)	77 (31)	
F, n = 152	24 (16)	57 (38)	71 (47)	

\*Abscess (n = 38), tissue (n = 32), neck/face/arm (n = 25), liver (n = 15), leg/hip (n = 14), breast/chest wall (n = 6), skin (n = 5), lung (n = 4), aorta (n = 2), vascular (n = 2), body fluid NOS (n = 4), bone (n = 4), spleen (n = 4), synovial fluid (n = 2), and dura mater (n = 1).  
†By  $\chi^2$  test.

more frequently in lymph node (52/134, 39%) or other noncardiac specimen types (77/134, 57%), whereas *Bartonella* spp. was most frequently identified in cardiac specimens from patients who were 18–65 (106/235, 45%) and ≥65 (27/45, 60%) years old (p<0.0001). For patients <18 years of age, *B. henselae* was the most commonly identified species (122/134, 91%).

Information on the origin of specimens was available for 361/420 (86%) patients, representing 36 states and the District of Columbia (Table 1). The states providing the greatest number of specimens were Texas (48/361, 13%) and Washington (46/361, 13%); specimens were provided for ≥10 patients in 8 (22%) states and for <5 patients in 16 states and the District of Columbia (46%). Among states with ≥10 specimens in which we identified *Bartonella* spp., California (16/40, 40%) and Washington (8/46, 17%) had the highest proportion of specimens infected with *B. quintana*; *B. quintana* was not identified in >10% of specimens in any other state.

**Discussion**

We report 420 cases of bartonellosis in the United States identified by uniform, clinical molecular diagnostic methods at a single reference laboratory during 2003–2021, representing 36 US states and including 140 persons who had endocarditis because of *Bartonella* spp. infections. Those cases highlight the broad clinical spectrum of disease caused by *Bartonella* spp., provide evidence that multiple species can cause bartonellosis, and demonstrate the utility of clinical molecular testing for pathogen identification.

*B. henselae* was the most frequently identified species causing bartonellosis. Although *B. henselae* was most often detected in lymph node specimens, consistent with cat-scratch disease (3), this species was also identified in cardiac specimens, underscoring its potential to cause endocarditis and endovascular disease (26). *B. henselae* was also detected in a diverse range of clinical specimens, including liver and bone, indicating the breadth of atypical *B. henselae* infections

(4,5). Although atypical bartonellosis manifestations are rare, ≈25% of pediatric hospitalizations associated with cat-scratch disease are caused by atypical *B. henselae* infections (27). A previous study of US insurance claims data found that atypical infections with *B. henselae* accounted for 1.5% of cases; ocular and hepatic lesions were the most common clinical manifestations of atypical *B. henselae* infection (28). Overall, *Bartonella* spp. were more frequently found in cardiac specimens in our study, which might reflect the preponderance of certain specimen types submitted for molecular diagnostic tests.

*B. quintana* was the second most frequently identified species overall and in cardiac specimens, which is consistent with *B. quintana* as a causative agent of subacute endocarditis (11,26,29). California and Washington had the highest proportion of specimens infected with *B. quintana*; a high prevalence of antibodies against *B. quintana* has been described among PEH living in both states (6,7). Eight states reported ≥10 cases of bartonellosis during the study period, and Texas and Washington reported the highest number of cases. The higher proportion of *B. quintana* infections observed in California and Washington might be from epidemiologic clustering, because *B. quintana* is transmitted by body lice, which can be spread through shared clothing and bedding material, and clusters of *B. quintana* infections have been reported among PEH (6,8,30). The higher number of *B. quintana* infections in California and Washington might reflect geographic differences in the number or type of specimens submitted for molecular testing. Although other studies have reported that *B. henselae* infection is more common in the southeastern region of the United States (3,28), we did not identify a clear predominance of infections in this region, which might reflect specimen submission patterns. Despite a potential bias from specimen submission patterns, molecular testing methods might identify spatiotemporal clusters of *B. quintana* infections.

Persons who had *B. henselae* infections were younger, and a higher proportion were female compared with those who had *B. quintana* infections. This finding likely reflects the higher incidence of *B. henselae* infection in children, possibly because children might spend more time in close proximity with domesticated cats (3). Persons <18 years of age commonly had lymph node or abscess involvement, typical of cat-scratch disease (5).

Nearly all patients with endocarditis had left-sided disease, which is consistent with other reports of endocarditis caused by *Bartonella* spp. (11,29,31). We found that *B. henselae* was a more frequent cause of endocarditis in our study than in prior studies that used molecular methods (26,29). In a study of 685 patients in the United Kingdom who had endocarditis, *B. quintana* was identified in 12/13 cases that had available PCR diagnostic results; *B. henselae* was identified in only 1/13 cases (29). A retrospective review of cases using PCR testing on heart valves identified *B. quintana* in 26/45 patients, compared with 19/45 patients who had *B. henselae* infections (26). However, the differences observed in our study might be because of differences in sample submission practices; we did not have information from the referring hospitals on the total number of patients with endocarditis caused by *Bartonella* spp. Although previous reviews have recommended the use of serologic testing to diagnose endocarditis caused by *Bartonella* spp. (31), our findings, in combination with those of other large studies (26,29), underscore the improved accuracy of molecular testing methods in obtaining a definitive diagnosis.

We identified 9 patients who had infections from novel or newly emerging *Bartonella* spp., including 2 patients with endocarditis caused by *B. vinsonii* and 4 patients with endocarditis caused by *B. clarridgeae*. Both *B. vinsonii* and *B. clarridgeae* have been reported to cause endocarditis (20,26,32), although only 1 case of endocarditis caused by *B. clarridgeae* infection has been previously reported (32); that infection was also confirmed by using molecular methods. We detected *Candidatus B. mayotimonensis* in 1 case of endocarditis, similar to findings for a single case reported previously (19). We also detected a case of *B. washoensis* lymphadenitis; this bacterium has been detected in ground squirrels and their fleas and was reported to be the etiologic agent in 2 human cases of myocarditis and meningitis in the United States (33) and prosthetic valve endocarditis in a patient in Germany (34). We detected a novel 16S rRNA sequence variant of *Bartonella*, most likely representing a previously undescribed species.

Although serology is an important diagnostic method for bartonellosis, case reports have described cross-reactivity of antibodies against *B. clarridgeae*, *B. henselae*, and *B. quintana* (32,35,36) and cross-reactivity between antibodies against *B. vinsonii* and *Coxiella burnetii* (20), highlighting the utility of molecular methods for species-specific diagnosis of those pathogens. Because *B. quintana*, *B. henselae*, and other non-*Bartonella* spp. pathogens are often treated with different antimicrobial drugs and for different durations, identification of infecting species can frequently have major effects on treatment, in addition to the epidemiologic value of recognizing novel organisms.

Despite increased specificity of molecular methods compared with serology and potential to detect novel organisms, disparate PCR positivity rates for fresh (16%) and FFPE (8%) tissue specimens highlight how preanalytical factors, such as formalin fixation, can limit assay yield. Other potential factors that can limit sensitivity of molecular methods include specimen selection, organism prevalence, and tissue volume. Formalin fixation damages DNA and can reduce assay sensitivity but has not always reduced positivity rates, perhaps because histopathologic evaluation permits selection of tissue most likely to contain microbial DNA (21). In this study, lymph nodes constituted the highest proportion of FFPE specimens. The observed discordant PCR positivity between specimen types might reflect anatomic site of disease, volume of tissue available for PCR, or tissue-specific variations in organism prevalence.

The first limitation of our study is that the analyzed specimens were not representative of all infections caused by *Bartonella* spp. because they represented more severe illness, and submitted specimens were primarily from tissues known to be infected by those pathogens. Second, the specimens did not represent a random sample of persons with bartonellosis; therefore, we could not estimate incidence or perform statistical inference testing. Third, not all geographic regions or states were equally represented, limiting our ability to compare results between different geographic areas. Fourth, we had little information regarding clinical features of the patients from whom specimens were collected, limiting our ability to determine potential risk factors on the basis of medical or social history. Fifth, preanalytical specimen handling can affect diagnostic yield; we could not assess or control variations in storage or transport conditions or tissue processing, such as formalin pH or acid-based decalcification of bone. Sixth, clinical testing might have missed *Bartonella* spp. other than *B. henselae* or *B. quintana* that were



present at levels below the limit of detection for the 16S primers, because the *ribC* primers were designed to increase specificity and sensitivity for detecting *B. henselae* and *B. quintana*. Finally, some specimens might have been misclassified, leading to a higher proportion of specimens categorized as abscesses or tissue if more specific information on anatomic site was not provided on the specimen submission form.

In conclusion, molecular methods provide a powerful diagnostic tool to detect infections caused by *Bartonella* spp. Those methods should be considered for patients who have culture-negative endocarditis or lymphadenitis of unclear etiology, particularly in persons with established risk factors, including exposure to cats or prior homelessness. Broader use of molecular methods in suspected cases of bartonellosis will help elucidate the full clinical spectrum of *Bartonella* infections and increase awareness of this underrecognized pathogen.

### Acknowledgments

We thank Mindy Barringer and Alissa Eckert for creating the artwork for Figure 3 and Mary Stewart for helpful discussions on 16S rRNA sequences in *Bartonella* spp.

### About the Author

Dr. McCormick is an epidemic intelligence service officer in the Bacterial Diseases Branch, Division of Vector-Borne Diseases, National Center for Emerging and Zoonotic Infectious Diseases, Centers for Disease Control and Prevention, Fort Collins, Colorado, USA. His primary research interests focus on the epidemiology and prevention of vectorborne diseases.

### References

- Cheslock MA, Embers ME. Human bartonellosis: an underappreciated public health problem? *Trop Med Infect Dis.* 2019;4:69. <https://doi.org/10.3390/tropicalmed4020069>
- Krügel M, Król N, Kempf VAJ, Pfeffer M, Obiegala A. Emerging rodent-associated *Bartonella*: a threat for human health? *Parasit Vectors.* 2022;15:113. <https://doi.org/10.1186/s13071-022-05162-5>
- Nelson CA, Saha S, Mead PS. Cat-scratch disease in the United States, 2005–2013. *Emerg Infect Dis.* 2016;22:1741–6. <https://doi.org/10.3201/eid2210.160115>
- Lemos AP, Domingues R, Gouveia C, de Sousa R, Brito MJ. Atypical bartonellosis in children: what do we know? *J Paediatr Child Health.* 2021;57:653–8. <https://doi.org/10.1111/jpc.15304>
- Florin TA, Zaoutis TE, Zaoutis LB. Beyond cat scratch disease: widening spectrum of *Bartonella henselae* infection. *Pediatrics.* 2008;121:e1413–25. <https://doi.org/10.1542/peds.2007-1897>
- Jackson LA, Spach DH, Kippen DA, Sugg NK, Regnery RL, Sayers MH, et al. Seroprevalence to *Bartonella quintana* among patients at a community clinic in downtown Seattle. *J Infect Dis.* 1996;173:1023–6. <https://doi.org/10.1093/infdis/173.4.1023>
- Smith HM, Reporter R, Rood MP, Linscott AJ, Mascola LM, Hogrefe W, et al. Prevalence study of antibody to ratborne pathogens and other agents among patients using a free clinic in downtown Los Angeles. *J Infect Dis.* 2002;186:1673–6. <https://doi.org/10.1086/345377>
- McCormick DW, Rowan SE, Pappert R, Yockey B, Dietrich EA, Petersen JM, et al. *Bartonella* seroreactivity among persons experiencing homelessness during an outbreak of *Bartonella quintana* in Denver, Colorado, 2020. *Open Forum Infect Dis.* 2021;8:ofab230. <https://doi.org/10.1093/ofid/ofab230>
- Spach DH, Koehler JE. *Bartonella*-associated infections. *Infect Dis Clin North Am.* 1998;12:137–55. [https://doi.org/10.1016/S0891-5520\(05\)70414-1](https://doi.org/10.1016/S0891-5520(05)70414-1)
- Fournier PE, Mainardi JL, Raoult D. Value of microimmunofluorescence for diagnosis and follow-up of *Bartonella endocarditis*. *Clin Diagn Lab Immunol.* 2002;9:795–801. <https://doi.org/10.1128/cdli.9.4.795-801.2002>
- Fournier PE, Thuny F, Richet H, Lepidi H, Casalta JP, Arzouni JP, et al. Comprehensive diagnostic strategy for blood culture-negative endocarditis: a prospective study of 819 new cases. *Clin Infect Dis.* 2010;51:131–40. <https://doi.org/10.1086/653675>
- Drummond MR, Dos Santos LS, Silva MND, Almeida AR, Diniz PPVP, Angerami R, et al. False negative results in bartonellosis diagnosis. *Vector Borne Zoonotic Dis.* 2019;19:453–4. <https://doi.org/10.1089/vbz.2018.2378>
- Massei F, Messina F, Gori L, Macchia P, Maggiore G. High prevalence of antibodies to *Bartonella henselae* among Italian children without evidence of cat scratch disease. *Clin Infect Dis.* 2004;38:145–8. <https://doi.org/10.1086/379824>
- Okaro U, Addisu A, Casanas B, Anderson B. *Bartonella* species, an emerging cause of blood-culture-negative endocarditis. *Clin Microbiol Rev.* 2017;30:709–46. <https://doi.org/10.1128/CMR.00013-17>
- Vermeulen MJ, Verbakel H, Notermans DW, Reimerink JHJ, Peeters MF. Evaluation of sensitivity, specificity and cross-reactivity in *Bartonella henselae* serology. *J Med Microbiol.* 2010;59:743–5. <https://doi.org/10.1099/jmm.0.015248-0>
- Vaca DJ, Dobler G, Fischer SF, Keller C, Konrad M, von Loewenich FD, et al. Contemporary diagnostics for medically relevant fastidious microorganisms belonging to the genera *Anaplasma*, *Bartonella*, *Coxiella*, *Orientia* and *Rickettsia*. *FEMS Microbiol Rev.* 2022;46:fuac013. <https://doi.org/10.1093/femsre/fuac013>
- Cummings LA, Hoogestraat DR, Rassoul-Barrett SL, Rosenthal CA, Salipante SJ, Cookson BT, et al. Comprehensive evaluation of complex polymicrobial specimens using next generation sequencing and standard microbiological culture. *Sci Rep.* 2020;10:5446. <https://doi.org/10.1038/s41598-020-62424-x>
- Lee SA, Plett SK, Luetkemeyer AF, Borgo GM, Ohliger MA, Conrad MB, et al. *Bartonella quintana* aortitis in a man with AIDS, diagnosed by needle biopsy and 16S rRNA gene amplification. *J Clin Microbiol.* 2015;53:2773–6. <https://doi.org/10.1128/JCM.02888-14>
- Lin EY, Tsigrelis C, Baddour LM, Lepidi H, Rolain JM, Patel R, et al. *Candidatus Bartonella mayotimonensis* and endocarditis. *Emerg Infect Dis.* 2010;16:500–3. <https://doi.org/10.3201/eid1603.081673>
- Downey RD, Russo SM, Hauger SB, Murphey DK, Marx G, Huynh T, et al. Identification of an emergent pathogen, *Bartonella vinsonii*, using next-generation sequencing in a patient with culture-negative endocarditis. *J Pediatric Infect Dis Soc.* 2021;10:213–6. <https://doi.org/10.1093/jpids/piaa014>

21. Lieberman JA, Bryan A, Mays JA, Stephens K, Kurosawa K, Mathias PC, et al. High clinical impact of broad-range fungal PCR in suspected fungal sinusitis. *J Clin Microbiol.* 2021;59:e0095521. <https://doi.org/10.1128/JCM.00955-21>
22. Lieberman JA, Kurosawa K, SenGupta D, Cookson BT, Salipante SJ, Busch D. Identification of *Leptotrichia goodfellowii* infective endocarditis by next-generation sequencing of 16S rDNA amplicons. *Cold Spring Harb Mol Case Stud.* 2021;7:a005876. <https://doi.org/10.1101/mcs.a005876>
23. Cummings LA, Kurosawa K, Hoogestraat DR, SenGupta DJ, Candra F, Doyle M, et al. Clinical next generation sequencing outperforms standard microbiological culture for characterizing polymicrobial samples. *Clin Chem.* 2016; 62:1465–73. <https://doi.org/10.1373/clinchem.2016.258806>
24. Altschul SF, Gish W, Miller W, Myers EW, Lipman DJ. Basic local alignment search tool. *J Mol Biol.* 1990;215:403–10. [https://doi.org/10.1016/S0022-2836\(05\)80360-2](https://doi.org/10.1016/S0022-2836(05)80360-2)
25. The R Foundation. The R project for statistical computing, 2020 [cited 2022 Aug 1]. <https://www.r-project.org>
26. Edouard S, Nabet C, Lepidi H, Fournier PE, Raoult D. *Bartonella*, a common cause of endocarditis: a report on 106 cases and review. *J Clin Microbiol.* 2015;53:824–9. <https://doi.org/10.1128/JCM.02827-14>
27. Reynolds MG, Holman RC, Curns AT, O'Reilly M, McQuiston JH, Steiner CA. Epidemiology of cat-scratch disease hospitalizations among children in the United States. *Pediatr Infect Dis J.* 2005;24:700–4. <https://doi.org/10.1097/01.inf.0000172185.01939.fc>
28. Nawrocki CC, Max RJ, Marzec NS, Nelson CA. Atypical manifestations of cat-scratch disease, United States, 2005–2014. *Emerg Infect Dis.* 2020;26:1438–46. <https://doi.org/10.3201/eid2607.200034>
29. Chaloner GL, Harrison TG, Birtles RJ. *Bartonella* species as a cause of infective endocarditis in the UK. *Epidemiol Infect.* 2013;141:841–6. <https://doi.org/10.1017/S0950268812001185>
30. Raoult D, Foucault C, Brouqui P. Infections in the homeless. *Lancet Infect Dis.* 2001;1:77–84. [https://doi.org/10.1016/S1473-3099\(01\)00062-7](https://doi.org/10.1016/S1473-3099(01)00062-7)
31. Hubers SA, DeSimone DC, Gersh BJ, Anavekar NS. Infective endocarditis: a contemporary review. *Mayo Clin Proc.* 2020;95:982–97. <https://doi.org/10.1016/j.mayocp.2019.12.008>
32. Logan MJ, Hall JL, Chalker VJ, O'Connell B, Birtles RJ. *Bartonella clarridgeiae* infection in a patient with aortic root abscess and endocarditis. *Access Microbiol.* 2019;1:e000064. <https://doi.org/10.1099/acmi.0.000064>
33. Osikowicz LM, Billeter SA, Rizzo MF, Rood MP, Freeman AN, Burns JE, et al. Distribution and diversity of *Bartonella washoensis* strains in ground squirrels from California and their potential link to human cases. *Vector Borne Zoonotic Dis.* 2016;16:683–90. <https://doi.org/10.1089/vbz.2016.2009>
34. von Loewenich FD, Seckert C, Dauber E, Kik MJL, de Vries A, Sprong H, et al. Prosthetic valve endocarditis with *Bartonella washoensis* in a human European patient and its detection in red squirrels (*Sciurus vulgaris*). *J Clin Microbiol.* 2019;58:e01404-19. <https://doi.org/10.1128/JCM.01404-19>
35. Margileth AM, Baehren DF. Chest-wall abscess due to cat-scratch disease (CSD) in an adult with antibodies to *Bartonella clarridgeiae*: case report and review of the thoracopulmonary manifestations of CSD. *Clin Infect Dis.* 1998;27:353–7. <https://doi.org/10.1086/514671>
36. Kordick DL, Hilyard EJ, Hadfield TL, Wilson KH, Steigerwalt AG, Brenner DJ, et al. *Bartonella clarridgeiae*, a newly recognized zoonotic pathogen causing inoculation papules, fever, and lymphadenopathy (cat scratch disease). *J Clin Microbiol.* 1997;35:1813–8. <https://doi.org/10.1128/jcm.35.7.1813-1818.1997>

Address for correspondence: Grace E. Marx, Centers for Disease Control and Prevention, 3156 Rampart Rd, Fort Collins, CO 80521, USA; email: [lw1@cdc.gov](mailto:lw1@cdc.gov)

*EID cannot ensure accessibility for supplementary materials supplied by authors. Readers who have difficulty accessing supplementary content should contact the authors for assistance.*

# *Bartonella* spp. Infections Identified by Molecular Methods, United States

## Appendix

### Additional Methods

#### Diagnostic Reporting Criteria

When reporting results of clinical diagnostic tests, the laboratory standard operating procedure provides for reporting the most specific taxonomic rank possible on the basis of sequencing results, availability of published sequences, and species defined as validly published by the International Code of Nomenclature of Bacteria [Bacteriological Code]. For clinical diagnostic purposes, the laboratory does not report species with *Candidatus* status or those that are effectively published but not validly published under the Bacteriological Code. Detected organisms without a validly published species name may be reported at the genus rank (e.g., *Bartonella* sp.) or as related to a validly published organism (e.g., *Bartonella* sp. related to *B. quintana*).

**Appendix Table.** Taxonomic identification quality metrics for selected bacteria in study of Bartonella spp. infections identified by molecular methods, USA\*

Species	Accession no.†	Trimmed length	Top BLAST hits		% Identity (alignment length)	Other top BLAST hits		% Identity (alignment length)
			Species	RefSeq accession no.‡		Species	Accession no.†	
<i>B. washoensis</i>	ON402466	290	<i>B. washoensis</i>	NZ_UAQI01000042 (R)	100.0 (290)	<i>B. jaculi</i> <i>Candidatus B. mayotimonensis</i>	AB602528 HM636441	99.2 (258) 98.3 (290)
			<i>B. washoensis</i>	NZ_JH725101-3 (R)	100.0 (290)			
			<i>B. massiliensis</i>	NZ_CABFVS010000059 (T)	98.6 (290)			
			<i>B. birtlesii</i>	NZ_CM001557 (T)	98.6 (290)			
			<i>B. koehlerae</i>	NR_024932 (T)	98.6 (290)			
			<i>B. grahamii</i>	NR_029366 (T)	98.6 (290)			
<i>Candidatus B. mayotimonensis</i>	ON402516	281	<i>B. senegalensis</i>	NZ_HE997546 (T)	99.3 (281)	<i>Candidatus B. mayotimonensis</i> <i>B. schoenbuchensis</i>	FJ376733 AJ278188-90	100.0 (281) 98.6 (281)
			<i>B. quintana</i>	NR_044748 (T)	99.3 (281)			
			<i>B. birtlesii</i>	NZ_CM001557 (T)	98.9 (282)			
			<i>B. vinsonii</i>	NZ_CADEAE010000020 (T)	98.9 (281)			
			<i>B. grahamii</i>	NR_029366 (T)	98.6 (281)			
			<i>B. massiliensis</i>	NZ_CABFVS010000059 (T)	98.6 (282)			
<i>Bartonella</i> sp.	ON402515	253	<i>B. doshiae</i>	NR_029366 (T)	98.6 (281)	<i>B. grahamii</i> <i>Candidatus B. mayotimonensis</i> <i>B. grahamii</i>	AB426634 FJ376733 NC_012846	99.2 (249) 98.8 (253) 98.8 (253)
			<i>B. vinsonii</i>	NZ_JH725037 (T)	98.8 (253)			
			<i>B. grahamii</i>	NR_029366 (T)	98.8 (253)			
			<i>B. doshiae</i>	NZ_JAGY01000010 (T)	98.4 (253)			
			<i>B. birtlesii</i>	NR_025051 (T)	98.4 (253)			
			<i>B. henselae</i>	NC_005956 (T)	98.4 (253)			

\*Bartonella spp. sequences from specimens were deposited in GenBank and analyzed by using BLAST (<https://blast.ncbi.nlm.nih.gov>). Trimmed and alignment lengths represent the number of nucleotides.

†GenBank accession numbers.

‡Accession numbers from GenBank RefSeq sequence database (<https://www.ncbi.nlm.nih.gov/refseq>). T indicates sequence from type strain material and R indicates non-type strain RefSeq records.