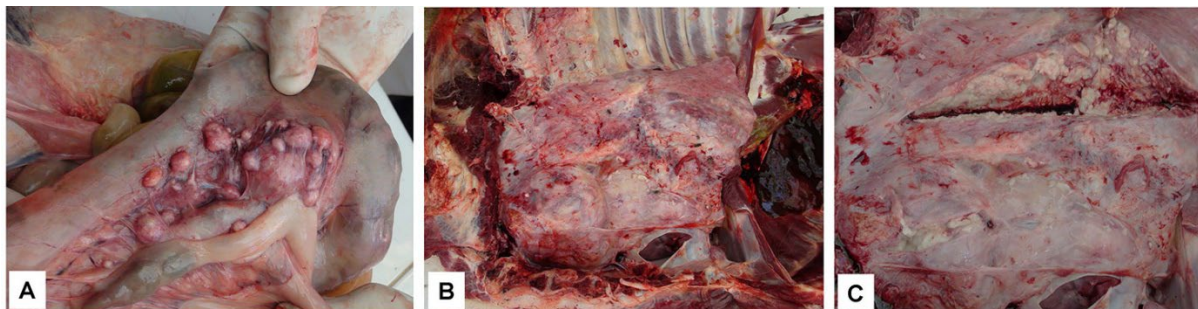


Emergence of *Mycobacterium orygis*–Associated Tuberculosis in Wild Ruminants, India

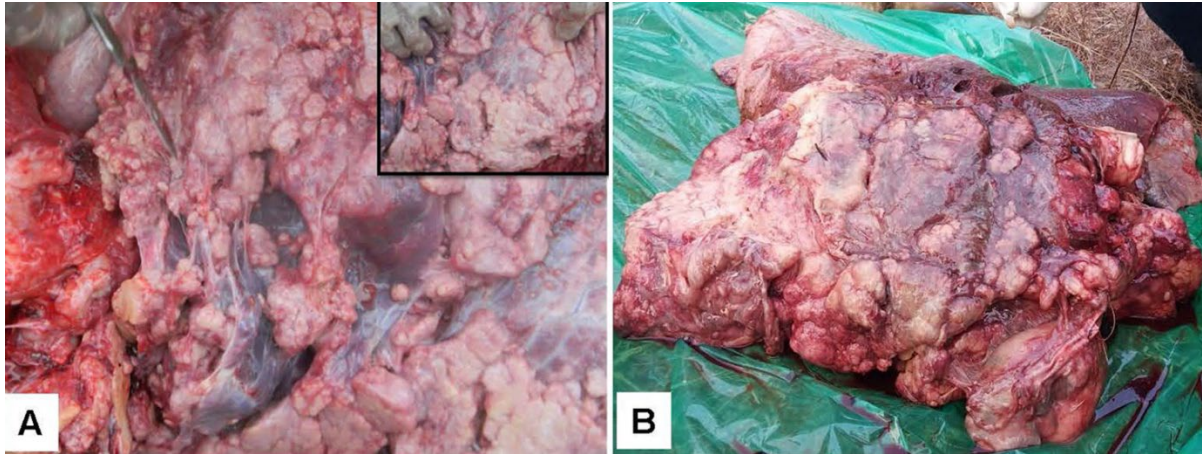
Appendix



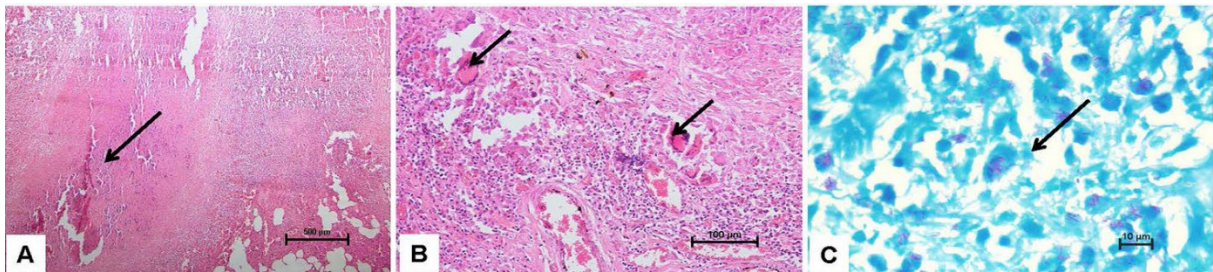
Appendix Figure 1. Weak and debilitated carcasses of spotted deer (A) and bison (B) affected with TB



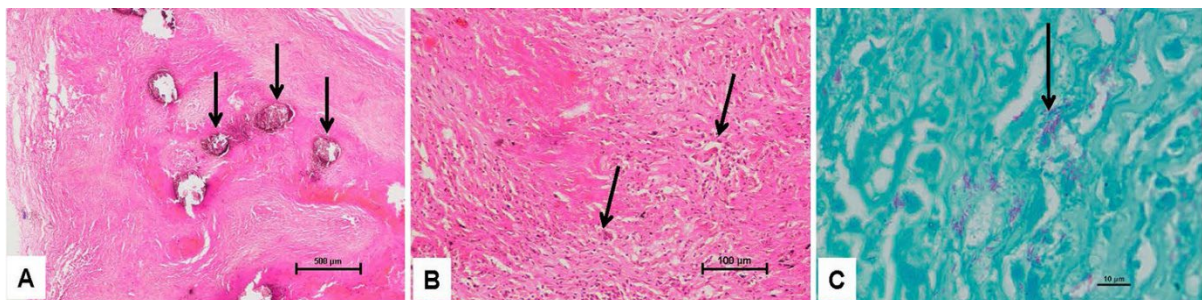
Appendix Figure 2. Spotted deer, enlarged mesenteric lymph nodes (A) showing tuberculous nodules. Multiple poorly demarcated coalescing nodules filled with pale-white caseous material (B & C)



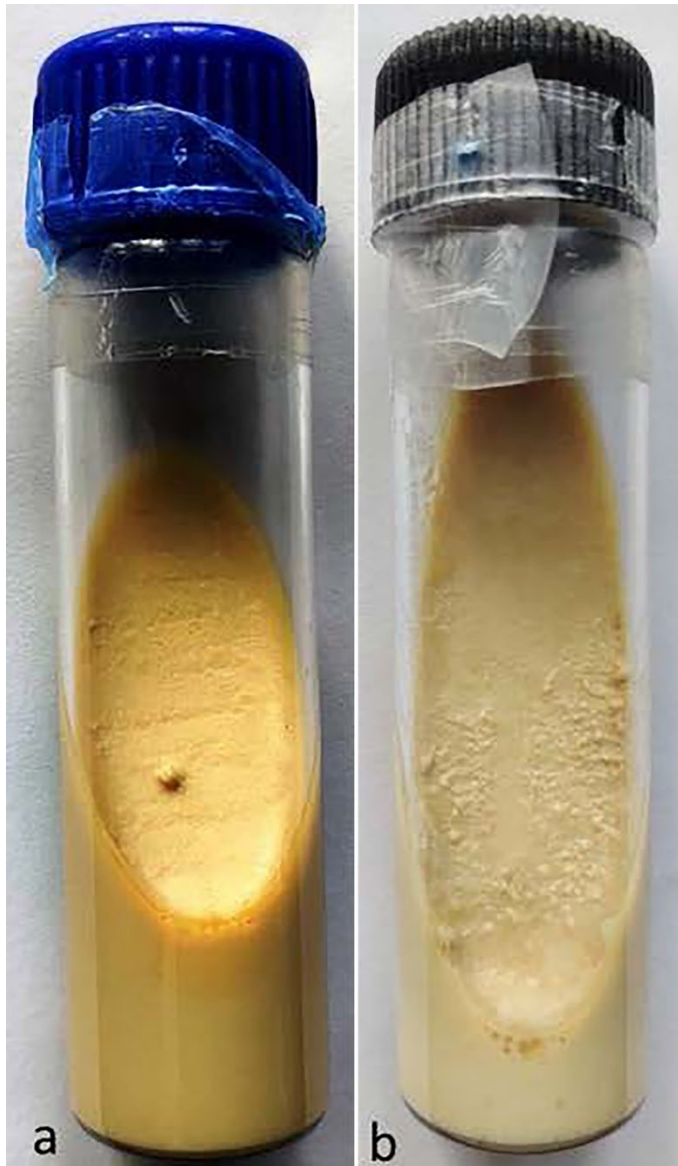
Appendix Figure 3. Bison, multifocal to coalescing, poorly demarcated, variable-sized white caseous nodules on the visceral pleura (A) and the lung parenchyma (B)



Appendix Figure 4. Spotted deer, lung showing extensive caseo-calcified areas (arrow) surrounded by inflammatory cells with associated emphysema (A) H&E $\times 40$. Higher magnification showing epithelioid cells and giant cells in the periphery of granuloma (B) (arrows) H&E $\times 200$ and acid-fast bacilli inside macrophages (C) ZN $\times 1000$



Appendix Figure 5. Bison, lung showing multiple caseo-calcified granulomas (arrows) in the visceral pleura with associated fibrosis (A) H&E $\times 40$. Higher magnification showing attempts of giant cells formation (arrows) in the periphery of granuloma with extensive fibroblasts proliferation (B) H&E $\times 200$ and acid-fast bacteria (arrow) in the caseative granuloma (C) ZN $\times 1000$



Appendix Figure 6. Granular and moist colonies of *M. orygis* from spotted deer (a) and bison (b) in Löwenstein–Jensen medium (LJ) supplemented with pyruvate for 4 weeks