

# SARS-CoV-2 Reinfection Risk in Persons with HIV, Chicago, Illinois, USA, 2020–2022

Richard A. Teran, Alexandra Gagner, Stephanie Gretsches, Jeff Lauritsen, Daniel Galanto, Kelly Walblay, Peter Ruestow, Colin Korban, Massimo Pacilli, David Kern, Stephanie R. Black, Irina Tabidze

Understanding if persons with HIV (PWH) have a higher risk for SARS-CoV-2 reinfection may help tailor future COVID-19 public health guidance. To determine whether HIV infection was associated with increased risk for SARS-CoV-2 reinfection, we followed adult residents of Chicago, Illinois, USA, with SARS-CoV-2 longitudinally from their first reported infection through May 31, 2022. We matched SARS-CoV-2 laboratory data and COVID-19 vaccine administration data to Chicago's Enhanced HIV/AIDS Reporting System. Among 453,587 Chicago residents with SARS-CoV-2, a total of 5% experienced a SARS-CoV-2 reinfection, including 192/2,886 (7%) PWH and 23,642/450,701 (5%) persons without HIV. We observed higher SARS-CoV-2 reinfection incidence rates among PWH (66 [95% CI 57–77] cases/1,000 person-years) than PWOH (50 [95% CI 49–51] cases/1,000 person-years). PWH had a higher adjusted rate of SARS-CoV-2 reinfection (1.46, 95% CI 1.27–1.68) than those without HIV. PWH should follow the recommended COVID-19 vaccine schedule, including booster doses.

**H**IV can compromise the immune system; persons with HIV (PWH), especially those not receiving antiretroviral therapy (ART), might be vulnerable to SARS-CoV-2 infection. Studies have reported an increased risk for SARS-CoV-2 infection among those with immunocompromising conditions (1–3); older age and underlying health conditions are known to increase the likelihood of severe COVID-19 outcomes (4,5). Understanding how COVID-19 affects PWH is important because approximately half of PWH are  $\geq 50$  years of age (6) and have higher rates of medical

comorbidities, compared with persons without HIV (PWOH) (7,8). Studies have reported conflicting results regarding SARS-CoV-2 infection among PWH: adverse COVID-19-related outcomes among PWH (9); no association between HIV status and infection risk (10,11); and increased rates of postvaccination infections in PWH (12,13). Repeat SARS-CoV-2 infections among PWH and the risk for SARS-CoV-2 reinfection, compared with PWOH, is less understood.

Recovery from SARS-CoV-2 infection is followed by a period of infection-induced immunity, during which antibody titers persist for several months after infection (14–16). Epidemiologic evidence indicates that infection-induced immunity alone does not provide full protection against subsequent infections and that protection wanes over time (17–22). Observational studies (23–26) also indicate that SARS-CoV-2 reinfections with different strains are possible even when infection-induced immunity is coupled with vaccine-induced immunity; risk is likely compounded in the presence of more transmissible circulating variants (27). We sought to determine whether HIV infection was associated with an increased risk for SARS-CoV-2 reinfection among residents of Chicago, Illinois, USA.

## Methods

### Data Sources

We abstracted all variables from public health surveillance and information systems. In Illinois, healthcare providers and laboratories are required to report both SARS-CoV-2 and HIV infections among residents to public health. Most SARS-CoV-2 laboratory test results are submitted electronically by testing laboratories directly into the Illinois National Electronic Disease Surveillance System (I-NEDSS). For this analysis, we defined a SARS-CoV-2 case as a positive SARS-CoV-2 nucleic acid amplification or antigen test result

Author affiliations: Centers for Disease Control and Prevention, Atlanta, Georgia, USA (R.A. Teran); Chicago Department of Public Health, Chicago, Illinois, USA (R.A. Teran, A. Gagner, S. Gretsches, J. Lauritsen, D. Galanto, K. Walblay, P. Ruestow, C. Korban, M. Pacilli, D. Kern, S.R. Black, I. Tabidze)

DOI: <http://doi.org/10.3201/eid2911.230577>

from a respiratory specimen collected from a Chicago resident and reported to a public health entity. We considered multiple positive SARS-CoV-2 test results reported to public health occurring within 90 days as part of the same SARS-CoV-2 case; we used the earliest positive specimen collection date as the index date for the infection episode.

The Enhanced HIV/AIDS Reporting System (eHARS) contains records of Chicago residents who have received an HIV/AIDS diagnosis reported to public health. Medical providers must report all new HIV and AIDS diagnoses; laboratories are required to report all positive HIV diagnostic tests, HIV viral load test results, CD4 test results, and nucleotide sequences from HIV genotypic resistance testing.

COVID-19 vaccine doses administered in the state of Illinois must also be reported to Illinois' Comprehensive Automated Immunization Registry (I-CARE). I-CARE data include information about the person receiving the vaccine dose, dose administration date, and vaccine manufacturer.

#### Surveillance and Information System Matching

The analytic cohort included Chicago residents with a positive SARS-CoV-2 test result reported to I-NEDSS with specimen collection dates on or before March 1, 2022, who were  $\geq 18$  years of age. We followed cohort members until their second positive SARS-CoV-2 test result or their death, or until May 31, 2022. We matched person-level SARS-CoV-2 data from I-NEDSS to person-level I-CARE data to identify all COVID-19 vaccine doses administered to the analytic cohort. We used a modified standardized 12-key hierarchical deterministic algorithm, described previously (28). The matching algorithm created 12 variables or keys using a variation of character combinations between first name, last name, and date of birth; key 1 (e.g., full last name + first 6 letters of first name + full date of birth) was the strictest and key 12 the least strict. We created keys for each discrete dataset (i.e., data from I-NEDSS and I-CARE). We compared records across datasets by proceeding chronologically through each key. We flagged matched records and appended them to a separate dataset. We then iteratively compared unmatched records across datasets using key 2 through key 12. We then merged the 12 datasets containing matched records for each key to create a matched dataset.

To identify PWH, we compared the matched dataset to a subset of records from eHARS using a separate 12-key hierarchical deterministic algorithm that also used first name, last name, and date of birth. The eHARS subset included PWH reported

in eHARS who were alive as of January 1, 2020, and whose current city of residence was Chicago or whose city of residence at death, HIV diagnosis, AIDS diagnosis, or HIV disease diagnosis was listed as Chicago when current city of residence was unavailable. The final analytic dataset included person-level records containing SARS-CoV-2 data, COVID-19 vaccine data, and HIV data for each person in the analytic cohort.

#### Category Definitions

We categorized persons with an HIV infection reported to eHARS before their first reported SARS-CoV-2 positive specimen collection date as PWH. For persons with an initial SARS-CoV-2 positive specimen collection date on or after February 1, 2022, we determined HIV status using eHARS data available as of January 31, 2022, because that was the most recent dataset available for analysis. We categorized persons with no evidence of HIV infection as PWOH. We excluded persons with an HIV diagnosis after their first SARS-CoV-2 infection from the analysis. We defined SARS-CoV-2 reinfection as a SARS-CoV-2 case occurring on or before May 31, 2022, and  $>90$  days from an initial SARS-CoV-2 positive test result.

#### Additional Covariates

We obtained age at first infection, sex at birth, race and ethnicity, and address from SARS-CoV-2 data reported to I-NEDSS. If sex at birth and race and ethnicity data were missing, we examined variables in eHARS and I-CARE and reconciled the data in the analytic dataset. We used address to categorize residence into 1 of 7 Chicago regions to account for differences in SARS-CoV-2 incidence and COVID-19 vaccine distribution and uptake across the city. We categorized persons into 4 distinct infection groups (ancestral variant, Alpha and other pre-Delta variants, Delta variant, and Omicron variant) on the basis of the specimen collection date of their initial SARS-CoV-2 infection. We determined thresholds for each group using local and national molecular surveillance data; the starting threshold for a new infection group indicates when 50% of sequenced specimens were attributed to a variant (29–31).

We evaluated vaccination status at the time of the first SARS-CoV-2 infection, and if applicable, at the time of reinfection. We categorized persons as unvaccinated if they had not received a COVID-19 vaccine dose; partially vaccinated if they received 1 dose of a 2-dose COVID-19 vaccine series; and completed series if they received 2 doses of a 2-dose series or 1 dose of a 1-dose series. We defined an additional

vaccine dose as any vaccine dose administered after completing the primary series. We also characterized vaccination status by vaccine manufacturer of the primary series.

For PWH, we determined years since HIV diagnosis and history of AIDS at initial SARS-CoV-2 infection. We determined history of AIDS on the basis of a clinical opportunistic illness diagnosis or CD4 count  $<200$  cells/mm<sup>3</sup> before the first SARS-CoV-2 infection (32). We identified the laboratory CD4 count and HIV viral load test result preceding the first SARS-CoV-2 infection for each PWH. We categorized most recent CD4 count as  $<200$ , 200–349, 350–499, or  $\geq 500$  cells/mm<sup>3</sup>. We used HIV viral load results to describe viral suppression status. We classified viral loads  $<200$  copies/mL as suppressed, consistent with the national HIV surveillance definition of viral suppression (33).

The Chicago Department of Public Health Institutional Review Board and the Centers for Disease Control and Prevention reviewed our investigation. We conducted our study in accordance with department policies and applicable federal law (45 C.F.R. part 46.102(l)(2), 21 C.F.R. part 56; 42 U.S.C. §241(d); 5 U.S.C. §552a; 44 U.S.C. §3501 et seq).

### Statistical Analysis

We followed persons in the study from the earliest positive SARS-CoV-2 specimen collection date until the earliest specimen collection date of their second positive SARS-CoV-2 infection occurring  $>90$  days from the first infection; until death; or until May 31, 2022, whichever occurred first. We compared characteristics by HIV status to evaluate differences between the subset of persons who had 1 SARS-CoV-2 infection reported to public health and the subset of persons who had  $>1$  SARS-CoV-2 infection. Among PWH, we compared HIV characteristics by reinfection status.

We calculated SARS-CoV-2 reinfection incidence rates and incidence rate differences per 1,000 person-years by HIV status and for each variant phase and calendar quarter. We used nonparametric survival analyses to estimate cumulative incidence of SARS-CoV-2 reinfection during the observation period. We tested for differences in cumulative incidence curves by HIV status by using Gray's tests.

To assess the effect of HIV infection on SARS-CoV-2 reinfection during the observation period, we compared crude and adjusted rate ratios using univariable and multivariable Poisson regression models with the log of person-time as the offset term. To account for overdispersion in the Poisson regression

model, we calculated robust SEs using generalized estimating equations. We adjusted the model for age, sex at birth, race and ethnicity, region of residence, initial SARS-CoV-2 infection group, vaccination status at the time of first SARS-CoV-2 infection, type of first COVID-19 vaccination dose received at the time of first SARS-CoV-2 infection, and number of doses administered after the first SARS-CoV-2 infection. We used SAS version 9.4 (SAS Institute, Inc., <https://www.sas.com>) to conduct record matching and analyses.

### Results

A total of 453,587 Chicago residents meeting the analytic cohort criteria had a positive SARS-CoV-2 test result reported to public health during March 2020–March 2022; those persons contributed a total of 473,513 person-years (median 1.1 person-years; interquartile analysis [IQR] 0.4–1.5 person-years) during the 26-month observation period (Appendix Table, <https://wwwnc.cdc.gov/EID/article/29/11/23-0577-App1.pdf>). Median age of the analytic cohort was 39 (IQR 28–53) years, and most (71.0% [321,905/453,587]) were unvaccinated at the time of their first SARS-CoV-2 infection. Among the analytic cohort, 2,886 (0.6%) persons had received an HIV diagnosis before their first SARS-CoV-2 infection. In total, 23,834 (5.3%) persons had a second positive SARS-CoV-2 test result reported to public health  $>90$  days after their first infection, indicating a SARS-CoV-2 reinfection. The percentage having a SARS-CoV-2 reinfection was higher among PWH (6.7% [192/2,886]) compared with PWOH (5.2% [23,642/450,701];  $p<0.01$ ).

Most (188,155 [41.5%]) persons' first SARS-CoV-2 infection occurred during March–December 2020, which was the ancestral variant phase of the COVID-19 pandemic (Appendix Table 1). Among 131,682 persons who received COVID-19 vaccine before their first SARS-CoV-2 infection, a plurality (71,333 [54.2%]) had completed a primary vaccine series from Pfizer-BioNTech (<https://www.pfizer.com>). Of 23,834 persons who had a SARS-CoV-2 reinfection, 39.6% (9,444/23,834) had completed a primary series but had not received an additional dose at the time of their SARS-CoV-2 reinfection. Among persons who experienced a SARS-CoV-2 reinfection, PWH were older (median 43 years of age, 95% CI 32–57 years of age) than PWOH (median 36 years, 95% CI 27–49 years of age;  $p<0.01$ ). PWH were more likely than PWOH to be male (79.3% vs. 40.9%;  $p<0.01$ ) and non-Hispanic or Latino Black or African American (53.7% vs. 27.0%;  $p<0.01$ ), and to

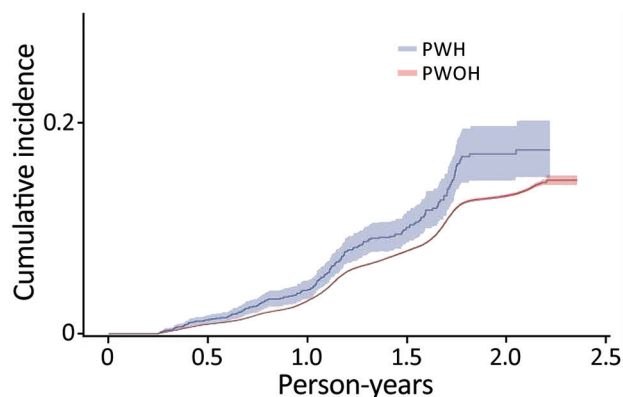
**Table 1.** SARS-CoV-2 reinfection incidence rates, by HIV status, Chicago, Illinois, USA, January 1, 2020–May 31, 2022\*

Characteristic	No. (%) events	Incidence, % (95% CI)			Incidence rate difference, %
		Analytic cohort	PWH	PWOH	
Total observation period	23,834 (100)	50 (37–66)	66 (57–77)	50 (49–51)	16
Timing of reinfection, by variant phase					
Ancestral variant, 2020 Jan 1–Dec 31	866 (3.6)	16 (9–26)	30 (16–59)	16 (15–17)	14
Alpha and other pre-Delta variants, 2021 Jan 1–Jul 10	1,030 (4.3)	6 (2–13)	8 (4–16)	6 (5–6)	2
Delta variant, 2021 Jul 11–Dec 18	3,039 (12.8)	11 (5–19)	17 (12–25)	11 (10–11)	6
Omicron variant, 2021 Dec 19–2022 Mar 1	18,899 (79.3)	40 (29–55)	50 (42–60)	40 (39–41)	10
Timing of reinfection, by calendar quarter					
2020					
Apr–Jun	14 (0.1)	2 (0–7)	16 (1–209)	2 (1–3)	14
Jul–Sep	268 (1.1)	12 (6–21)	30 (11–82)	12 (10–13)	18
Oct–Dec	584 (2.5)	11 (5–20)	14 (5–37)	11 (10–12)	3
2021					
Jan–Mar	549 (2.3)	5 (2–12)	5 (1–16)	5 (4–6)	0
Apr–Jun	457 (1.9)	3 (1–8)	4 (1–12)	3 (2–3)	1
Jul–Sep	721 (3.0)	3 (1–9)	9 (5–17)	3 (2–3)	6
Oct–Dec	9,477 (39.8)	32 (22–45)	42 (33–53)	32 (31–32)	10
2022					
Jan–Mar	7,750 (32.5)	20 (12–31)	27 (21–35)	20 (19–20)	7
Apr–May	4,014 (16.8)	9 (4–17)	9 (5–13)	9 (8–9)	0

\*Incidence is given as percentage of cases per 1,000 person-years. PWH, persons with HIV; PWOH, persons without HIV.

have completed a primary COVID-19 vaccination series plus additional dose (31.8% vs. 22.1%;  $p < 0.01$ ). Also, among persons with a SARS-CoV-2 reinfection, PWH were less likely to be unvaccinated at the time of their first infection, compared with PWOH (87.5% vs. 91.0%;  $p < 0.01$ ).

Among PWH ( $n = 2,886$ ), median time from HIV diagnosis to initial SARS-CoV-2 infection was 12.8 (IQR 6.3–19.7) years. Approximately half (1,359 [47.1%]) met criteria for AIDS before their first SARS-CoV-2 infection. More than half (1,513 [52.4%]) had a CD4 count  $\geq 500$  cells/mm<sup>3</sup>, and most (2,213 [76.7%]) had an HIV viral load result  $< 200$  copies/mL, indicating viral suppression. HIV history data and HIV laboratory data were not significantly different ( $p \geq 0.05$ ) when stratified by SARS-CoV-2 reinfection status.



**Figure 1.** Cumulative incidence (cases/1,000 person-years) of SARS-CoV-2 reinfection by HIV status, Chicago, Illinois, USA, January 1, 2020–May 31, 2022. PWH, persons with HIV; PWOH, persons without HIV.

Incidence rate of SARS-CoV-2 reinfection for the analytic cohort was 50 (95% CI 37–66) cases/1,000 person-years (Table 1). Reinfection incidence was higher among PWH (66 [95% CI 57–77] cases/1,000 person-years) than PWOH during the observation period (50 [95% CI 49–51] cases/1,000 person-years). When we examined SARS-CoV-2 reinfections by variant phase and calendar quarter, PWH consistently had a higher incidence rate of SARS-CoV-2 reinfection, compared with PWOH. We observed the highest incidence rates for PWH during the omicron variant phase (50 [95% CI 42–60] cases/1,000 person-years); by calendar quarter the incidence rates were highest during October–December 2021 (42 [95% CI 33–53] cases/1,000 person-years). Incidence rate differences between PWH and PWOH varied throughout the observation period; overall, an excess of 16 SARS-CoV-2 reinfections/1,000 person-years among PWH were reported. We observed the highest incidence rate difference during July–September 2020, which was an excess of 18 SARS-CoV-2 reinfections/1,000 person-years among PWH compared with PWOH.

SARS-CoV-2 reinfection cumulative incidence rate (CIR) at 1 year after an initial infection was 3.1% (95% CI 3.0%–3.2%); at 1.5 years, 7.8% (95% CI 7.7%–8.0%); at 2 years, 13.1% (95% CI 12.9%–13.3%), and at 2.3 years, the end of observation period, 14.5% (95% CI 14.0%–15.1%). CIR was higher among PWH than PWOH at all time points (Figure 1). Two years after an initial infection, the SARS-CoV-2 reinfection CIR was 17.0% (95% CI 14.5%–19.7%) among PWH, compared with 13.1% (95% CI 12.9%–13.2%) among

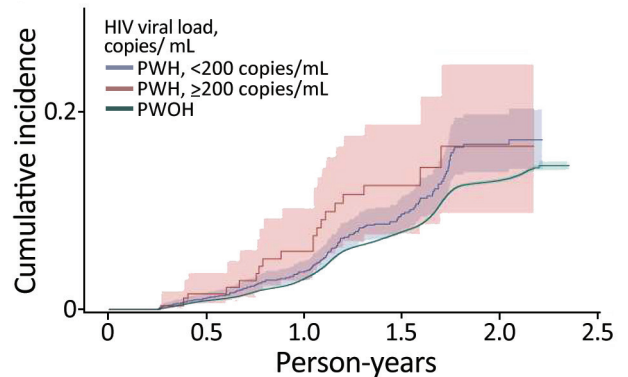
PWOH. Persons with HIV who were not virally suppressed had higher SARS-CoV-2 reinfection CIR compared with virally suppressed PWH and PWOH (Figure 2); 1.5 years after an initial SARS-CoV-2 infection, CIR in virally unsuppressed PWH was 12.5% (95% CI 7.6%–18.8%), in virally suppressed PWH was 9.7% (95% CI 8.0%–11.4%), and in PWOH was 7.8% (95% CI 7.7%–7.9%). Similarly, PWH whose most recent CD4 count was  $<200$  cells/mm<sup>3</sup> had higher SARS-CoV-2 reinfection CIR (Figure 3). CIR at 1.5 years after initial infection among PWH with CD4 count  $<200$  was 21.2% (95% CI 13.7%–29.7%), among PWH with CD4 of 200–349 was 8.3% (95% CI 4.2%–14.2%), among PWH with CD4 of 350–499 was 9.7% (95% CI 6.2%–14.1%), and among PWH with CD4  $\geq 500$  was 9.1% (95% CI 7.2%–11.2%). CIR in PWOH was 7.8% (95% CI 7.7%–7.9%). PWH who had a history of AIDS before their first SARS-CoV-2 infection also had a higher SARS-CoV-2 reinfection CIR (10.8% [95% CI 8.6%–13.2%]) at 1.5 years after initial infection, compared with PWH who had no history of AIDS (9.5% [95% CI 7.5%–11.7%]) and PWOH (7.8% [95% CI 7.7%–7.9%]) (Figure 4).

In unadjusted analyses, compared with PWOH, PWH had a higher rate (rate ratio 1.32 [95% CI 1.15–1.51]) of SARS-CoV-2 reinfection during the observation period (Table 2). After we adjusted for sociodemographic factors, region of residence, initial SARS-CoV-2 infection timing, vaccination status, vaccination type, and number of doses administered after initial SARS-CoV-2 infection, PWH had a higher rate (adjusted rate ratio 1.46 [95% CI 1.27–1.68]) of SARS-CoV-2 reinfection during the observation period compared with PWOH.

## Discussion

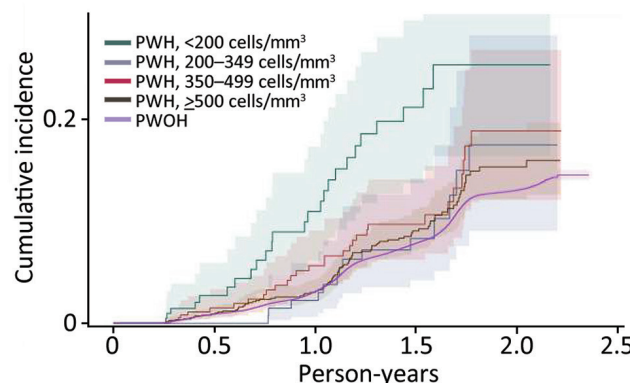
This population-level analysis of matched records from different public health surveillance and information systems revealed that, among adult Chicago residents who had a reported positive SARS-CoV-2 infection, 5.3% experienced a SARS-CoV-2 reinfection during the observation period. However, incidence of SARS-CoV-2 reinfection was consistently higher among PWH than PWOH. Incidence rate differences fluctuated; differences were greater in SARS-CoV-2 reinfection incidence between PWH and PWOH occurring during periods of high citywide case rates. Moreover, after adjustment for demographic factors, residence, and COVID-19 vaccination, PWH were found to experience a higher rate of SARS-CoV-2 reinfection than were PWOH.

National and local surveillance data distinguishing SARS-CoV-2 reinfections from previous

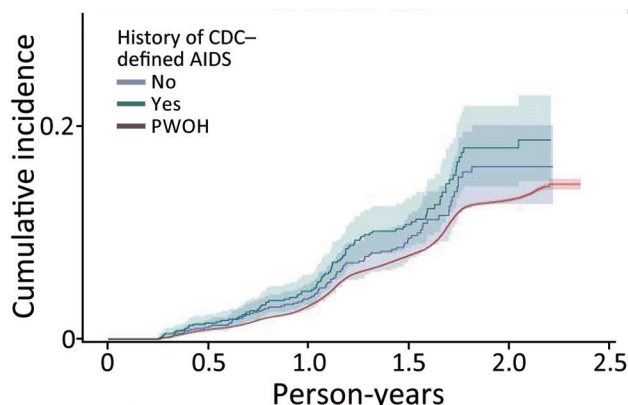


**Figure 2.** Cumulative incidence (cases/1,000 person-years) of SARS-CoV-2 reinfection by HIV viral suppression status, Chicago, Illinois, USA, January 1, 2020–May 31, 2022. PWH, persons with HIV; PWOH, persons without HIV.

SARS-CoV-2 infections are limited. However, the proportion of persons who experienced a SARS-CoV-2 reinfection in Chicago is consistent with surveillance data from New York state, which reported 5.9% of residents have had a SARS-CoV-2 reinfection (34). Compared with observational studies reporting population-level estimates of SARS-CoV-2 reinfections in other US jurisdictions and in countries in Europe, our analysis identified higher reinfection incidence rates than previously reported (35–37). However, those differences might be attributable to methodological distinctions across studies, including a longer observation period through the Omicron variant phase of the COVID-19 pandemic. Our study also found that reinfection risk increases over time, which is consistent with different studies reporting SARS-CoV-2 infection-induced and vaccine-induced immunity waning over time and immune evasion (18–21).



**Figure 3.** Cumulative incidence (cases/1,000 person-years) of SARS-CoV-2 reinfection by most recent CD4 count, Chicago, Illinois, USA, January 1, 2020–May 31, 2022. PWH, persons with HIV; PWOH, persons without HIV.



**Figure 4.** Cumulative incidence (cases/1,000 person-years) of SARS-CoV-2 reinfection by history of AIDS diagnosis, Chicago, Illinois, USA, January 1, 2020–May 31, 2022. CDC, Centers for Disease Control and Prevention; PWH, persons with HIV; PWOH, persons without HIV.

Our analysis found that SARS-CoV-2 reinfection cumulative incidence rates were higher among PWH than PWOH irrespective of most recent CD4 and viral load laboratory results. This finding indicates that even persons with well-controlled HIV infection might have a higher risk for SARS-CoV-2 reinfection compared with PWOH. We observed the highest cumulative incidence rates among PWH with a most recent HIV viral load laboratory result  $\geq 200$  copies/mL and CD4 laboratory result  $< 200$  cells/mm<sup>3</sup>, indicating that PWH with laboratory evidence consistent with uncontrolled HIV are at greatest risk for multiple SARS-CoV-2 infections. Similarly, PWH with a history of AIDS had a higher cumulative risk for reinfection, followed by PWH without AIDS; PWOH had the lowest cumulative incidence across the 3 strata. Persons who are immunocompromised are at increased risk for severe COVID-19 illness and death; their immune response to COVID-19 vaccination may not be as strong as in persons who are not immunocompromised. Guidance from the Centers for Disease Control and Prevention recommends that persons with advanced or untreated HIV receive an additional COVID-19 vaccine dose to complete a primary series and receive a booster (38,39). However, our analysis also indicated that PWH with

high CD4 counts, no evidence of a prior AIDS diagnosis, and viral suppression are also at higher risk for SARS-CoV-2 reinfection than PWOH. Additional studies are needed to understand if those with well-controlled HIV also require additional COVID-19 vaccine doses.

Multiple studies have shown that persons who receive COVID-19 vaccine after a SARS-CoV-2 infection have a lower risk for reinfection than do unvaccinated persons (40–42). Most persons in the analytic cohort, regardless of HIV status, were unvaccinated at the time of their first SARS-CoV-2 infection. Most of those infections occurred before COVID-19 vaccine was available. Among persons with a SARS-CoV-2 reinfection, 38.2% (9,039/23,642) of PWOH and 31.8% (61/192) of PWH had either not received any COVID-19 vaccine or had not completed a primary series. All persons, especially PWH, should remain up to date with their COVID-19 vaccines to prevent SARS-CoV-2 reinfections or adverse COVID-19 outcomes.

The first limitation of this study is that we were unable to account for testing practices or healthcare-seeking behaviors in our analysis because surveillance systems do not capture reason for testing. Repeat SARS-CoV-2 infections are more likely to be detected among persons who regularly have access to and participate in SARS-CoV-2 testing, leading to differential SARS-CoV-2 reinfection detection rates among PWH and PWOH. Second, availability of SARS-CoV-2 laboratory and at-home testing evolved over time throughout the observation period. Limited access to testing may lead to unconfirmed infections. Similarly, national distribution of at-home antigen tests starting in January 2022 likely led to underestimation of case counts, because those test results are typically not reported to public health. Therefore, our analysis likely underestimates the true number of SARS-CoV-2 reinfections. Third, our person-time calculations only considered reported positive SARS-CoV-2 test results, death, or the end of the observation period. We were unable to censor persons if they moved out of Chicago or had positive test results not reported to their local public health jurisdiction.

**Table 2.** Effect of HIV status on SARS-CoV-2 reinfection, Chicago, Illinois, USA, January 1, 2020–May 31, 2022\*

HIV status at first SARS-CoV-2 infection	Total no. (%) persons, n = 453,587 (%)	Total no. (%) events, n = 23,834	Unadjusted rate ratio (95% CI)	p value	Adjusted rate ratio (95% CI)†	p value
PWH	2,886 (0.6)	192 (0.8)	<b>1.32 (1.15–1.51)</b>	<b>&lt;0.0001</b>	<b>1.46 (1.27–1.68)</b>	<b>&lt;0.0001</b>
PWOH	450,701 (99.4)	23,642 (99.2)	Reference		Reference	

\*Estimates describe exponentiated estimates from a Poisson regression model using the logarithm of person-time as the offset term. Bold text indicates statistical significance at  $p < 0.05$ . PWH, persons with HIV; PWOH, persons without HIV.

†Multivariable Poisson regression model controlled for the following covariates: age, sex at birth, ethnicity and race, region of residence, initial SARS-CoV-2 infection group, vaccination status at the time of first SARS-CoV-2 infection, vaccination type, and number of doses administered after the first SARS-CoV-2 infection.

Therefore, our incidence rate estimates are likely underestimates because some persons may have contributed less person-time. Fourth, we were unable to evaluate and adjust for comorbidities and ART use in our analyses because that type of clinical information is not reported to public health through traditional electronic laboratory reporting. Data abstracted from medical records might more fully characterize whether comorbidities influence the association between HIV and SARS-CoV-2 reinfection. Last, this analysis assumed all positive test results separated by >90 days were distinct SARS-CoV-2 infection episodes, consistent with the 2021 COVID-19 case definition (43). Case reports have documented persistent shedding after a single infection spanning >90 days among persons who are immunocompromised (44–46), and SARS-CoV-2 reinfections occurring <90 days from a prior infection (47,48). Because of limited national SARS-CoV-2 whole-genome sequencing capacity and inadequate specimen storage capacity at laboratories, local public health departments are rarely able to verify SARS-CoV-2 reinfections by comparing lineage results from respiratory specimens collected from multiple infection episodes.

All persons, including PWH, should stay up to date with recommended COVID-19 vaccines, including bivalent booster doses (49). Evaluating the association between HIV infection and SARS-CoV-2 reinfections using surveillance data can help strengthen public health recommendations including the need for extra doses as part of a primary series, booster doses of vaccine, and optimized ART in PWH. Tailored guidance and prevention messaging for PWH can help reduce the elevated risk we identified in this analysis and limit continued SARS-CoV-2 transmission. As the COVID-19 pandemic persists, local health jurisdictions can leverage data access and link records across surveillance datasets to monitor SARS-CoV-2 infections and other outcomes among vulnerable populations, including PWH.

### Acknowledgments

We thank the staff of the Chicago Department of Public Health (CDPH) and teams of epidemiologists within the Syndemic Infectious Diseases Bureau and Disease Control Bureau who collect, clean, manage, and analyze HIV and COVID-19 data that allow CDPH to respond to outbreaks of disease and prevent transmission across the city of Chicago. We also thank CDPH's Regional Innovative Public Health Laboratory for providing sequencing capacity to understand SARS-CoV-2 variant circulation across Chicago.

### About the Author

Dr. Teran is an infectious disease epidemiologist and CDC Epidemic Intelligence Service Officer, assigned to the Chicago Department of Public Health. His research interests include communicable diseases, syndemic infectious diseases, and understanding viral suppression patterns of persons with HIV.

### References

1. Tenforde MW, Patel MM, Gaglani M, Ginde AA, Douin DJ, Talbot HK, et al.; Influenza and Other Viruses in the Acutely Ill (IVY) Network. Effectiveness of a third dose of Pfizer-BioNTech and Moderna vaccines in preventing COVID-19 hospitalization among immunocompetent and immunocompromised adults – United States, August–December 2021. *MMWR Morb Mortal Wkly Rep.* 2022; 71:118–24. <http://dx.doi.org/10.15585/mmwr.mm7104a2>
2. Malinis M, Cohen E, Azar MM. Effectiveness of SARS-CoV-2 vaccination in fully vaccinated solid organ transplant recipients. *Am J Transplant.* 2021;21:2916–8. <https://doi.org/10.1111/ajt.16713>
3. Sun J, Zheng Q, Madhira V, Olex AL, Anzalone AJ, Vinson A, et al.; National COVID Cohort Collaborative (N3C) Consortium. Association between immune dysfunction and COVID-19 breakthrough infection after SARS-CoV-2 vaccination in the US. *JAMA Intern Med.* 2022;182:153–62. <https://doi.org/10.1001/jamainternmed.2021.7024>
4. Kompaniyets L, Pennington AF, Goodman AB, Rosenblum HG, Belay B, Ko JY, et al. Underlying medical conditions and severe illness among 540,667 adults hospitalized with COVID-19, March 2020–March 2021. *Prev Chronic Dis.* 2021;18:210123. <https://doi.org/10.5888/pcd18.210123>
5. Yek C, Warner S, Wiltz JL, Sun J, Adjei S, Mancera A, et al. Risk factors for severe COVID-19 outcomes among persons aged ≥18 years who completed a primary COVID-19 vaccination series – 465 health care facilities, United States, December 2020–October 2021. *MMWR Morb Mortal Wkly Rep.* 2022;71:19–25. <https://doi.org/10.15585/mmwr.mm7101a4>
6. Centers for Disease Control and Prevention. Diagnoses of HIV infection in the United States and dependent areas 2020. *HIV Surveillance Report.* 2022;33 [cited 2022 Jul 5]. <http://www.cdc.gov/hiv/library/reports/hiv-surveillance/vol-33/index.html>
7. Balderson BH, Grothaus L, Harrison RG, McCoy K, Mahoney C, Catz S. Chronic illness burden and quality of life in an aging HIV population. *AIDS Care.* 2013;25:451–8. <https://doi.org/10.1080/09540121.2012.712669>
8. Schouten J, Wit FW, Stolte IG, Kootstra NA, van der Valk M, Geerlings SE, et al.; AGEHIV Cohort Study Group. Cross-sectional comparison of the prevalence of age-associated comorbidities and their risk factors between HIV-infected and uninfected individuals: the AGEHIV cohort study. *Clin Infect Dis.* 2014;59:1787–97. <https://doi.org/10.1093/cid/ciu701>
9. Braunstein SL, Lazar R, Wahnich A, Daskalakis DC, Blackstock OJ. Coronavirus disease 2019 (COVID-19) infection among people with human immunodeficiency virus in New York City: a population-level analysis of linked surveillance data. *Clin Infect Dis.* 2021;72:e1021–9. <https://doi.org/10.1093/cid/ciaa1793>
10. Liu C, Lee J, Ta C, Soroush A, Rogers JR, Kim JH, et al. Risk factors associated with SARS-CoV-2 breakthrough infections in fully mRNA-vaccinated individuals: retrospective

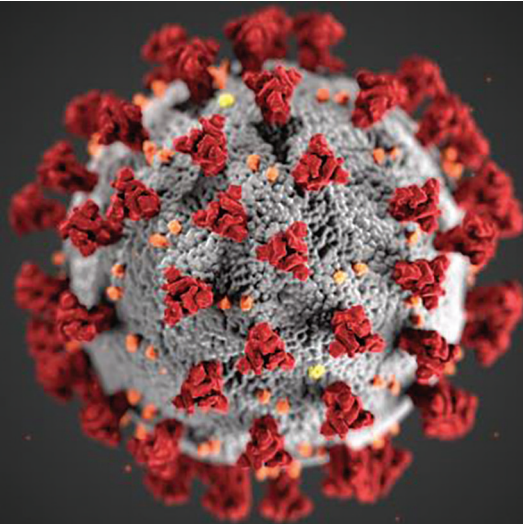
- analysis. *JMIR Public Health Surveill.* 2022;8:e35311. <https://doi.org/10.2196/35311>
11. Butt AA, Khan T, Yan P, Shaikh OS, Omer SB, Mayr F. Rate and risk factors for breakthrough SARS-CoV-2 infection after vaccination. *J Infect.* 2021;83:237–79. <https://doi.org/10.1016/j.jinf.2021.05.021>
  12. Sun J, Zheng Q, Madhira V, Olex AL, Anzalone AJ, Vinson A, et al.; National COVID Cohort Collaborative (N3C) Consortium. Association between immune dysfunction and COVID-19 breakthrough infection after SARS-CoV-2 vaccination in the US. *JAMA Intern Med.* 2022;182:153–62. <https://doi.org/10.1001/jamainternmed.2021.7024>
  13. Coburn SB, Humes E, Lang R, Stewart C, Hogan BC, Gebo KA, et al.; Corona-Infectious-Virus Epidemiology Team (CIVETs) of the NA-ACCORD of IeDEA. Analysis of postvaccination breakthrough COVID-19 infections among adults with HIV in the United States. *JAMA Netw Open.* 2022;5:e2215934. <https://doi.org/10.1001/jamanetworkopen.2022.15934>
  14. Wang H, Yuan Y, Xiao M, Chen L, Zhao Y, Haiwei Zhang, et al. Dynamics of the SARS-CoV-2 antibody response up to 10 months after infection. *Cell Mol Immunol.* 2021;18:1832–4. <https://doi.org/10.1038/s41423-021-00708-6>
  15. Wheatley AK, Juno JA, Wang JJ, Selva KJ, Reynaldi A, Tan HX, et al. Evolution of immune responses to SARS-CoV-2 in mild–moderate COVID-19. *Nat Commun.* 2021;12:1162. <https://doi.org/10.1038/s41467-021-21444-5>
  16. Lumley SF, Wei J, O'Donnell D, Stoesser NE, Matthews PC, Howarth A, et al.; Oxford University Hospitals Staff Testing Group. The duration, dynamics, and determinants of severe acute respiratory syndrome coronavirus 2 (SARS-CoV-2) antibody responses in individual healthcare workers. *Clin Infect Dis.* 2021;73:e699–709. <https://doi.org/10.1093/cid/ciab004>
  17. Babiker A, Marvil CE, Waggoner JJ, Collins MH, Piantadosi A. The importance and challenges of identifying SARS-CoV-2 reinfections. *J Clin Microbiol.* 2021;59:59. <https://doi.org/10.1128/JCM.02769-20>
  18. Hall VJ, Foulkes S, Charlett A, Atti A, Monk EJM, Simmons R, et al.; SIREN Study Group. SARS-CoV-2 infection rates of antibody-positive compared with antibody-negative health-care workers in England: a large, multicentre, prospective cohort study (SIREN). *Lancet.* 2021;397:1459–69. [https://doi.org/10.1016/S0140-6736\(21\)00675-9](https://doi.org/10.1016/S0140-6736(21)00675-9)
  19. Hansen CH, Michlmayr D, Gubbels SM, Mølbak K, Ethelberg S. Assessment of protection against reinfection with SARS-CoV-2 among 4 million PCR-tested individuals in Denmark in 2020: a population-level observational study. *Lancet.* 2021;397:1204–12. [https://doi.org/10.1016/S0140-6736\(21\)00575-4](https://doi.org/10.1016/S0140-6736(21)00575-4)
  20. Sheehan MM, Reddy AJ, Rothberg MB. Reinfection rates among patients who previously tested positive for coronavirus disease 2019: a retrospective cohort study. *Clin Infect Dis.* 2021;73:1882–6. <https://doi.org/10.1093/cid/ciab234>
  21. Lumley SF, O'Donnell D, Stoesser NE, Matthews PC, Howarth A, Hatch SB, et al.; Oxford University Hospitals Staff Testing Group. Antibody status and incidence of SARS-CoV-2 infection in health care workers. *N Engl J Med.* 2021;384:533–40. <https://doi.org/10.1056/NEJMoa2034545>
  22. Wang J, Kaperak C, Sato T, Sakuraba A. COVID-19 reinfection: a rapid systematic review of case reports and case series. *J Investig Med.* 2021;69:1253–5. <https://doi.org/10.1136/jim-2021-001853>
  23. Bozio CH, Grannis SJ, Naleway AL, Ong TC, Butterfield KA, DeSilva MB, et al. Laboratory-confirmed COVID-19 among adults hospitalized with COVID-19-like illness with infection-induced or mRNA vaccine-induced SARS-CoV-2 immunity – nine states, January–September 2021. *MMWR Morb Mortal Wkly Rep.* 2021;70:1539–44. <https://doi.org/10.15585/mmwr.mm7044e1>
  24. Lawandi A, Warner S, Sun J, Demirkale CY, Danner RL, Klompas M, et al. Suspected severe acute respiratory syndrome coronavirus 2 (SARS-CoV-2) reinfections: incidence, predictors, and healthcare use among patients at 238 US healthcare facilities, 1 June 2020 to 28 February 2021. *Clin Infect Dis.* 2022;74:1489–92. <https://doi.org/10.1093/cid/ciab671>
  25. Roskosky M, Borah BF, DeJonge PM, Donovan CV, Blevins LZ, Lafferty AG, et al. Notes from the field: SARS-CoV-2 Omicron variant infection in 10 persons within 90 days of previous SARS-CoV-2 Delta variant infection – four states, October 2021–January 2022. *MMWR Morb Mortal Wkly Rep.* 2022;71:524–6. <https://doi.org/10.15585/mmwr.mm7114a2>
  26. Plumb ID, Feldstein LR, Barkley E, Posner AB, Bregman HS, Hagen MB, et al. Effectiveness of COVID-19 mRNA vaccination in preventing COVID-19-associated hospitalization among adults with previous SARS-CoV-2 infection – United States, June 2021–February 2022. *MMWR Morb Mortal Wkly Rep.* 2022;71:549–55. <https://doi.org/10.15585/mmwr.mm7115e2>
  27. Altarawneh HN, Chemaitelly H, Hasan MR, Ayoub HH, Qassim S, AlMukdad S, et al. Protection against the Omicron variant from previous SARS-CoV-2 infection. *N Engl J Med.* 2022;386:1288–90. <https://doi.org/10.1056/NEJMc2200133>
  28. Drobnik A, Pinchoff J, Bushnell G, Ly S, Yuan J, Varma JK, et al. Matching HIV, tuberculosis, viral hepatitis, and sexually transmitted diseases surveillance data, 2000–2010: identification of infectious disease syndemics in New York City. *J Public Health Manag Pract.* 2014;20:506–12. <https://doi.org/10.1097/PHH.0b013e3182a95607>
  29. Chicago Department of Public Health. SARS-CoV-2 variants. 2022 [cited 2022 Jun 1]. <https://www.chicago.gov/city/en/sites/covid-19/home/sars-cov-2-variants.html>
  30. Centers for Disease Control and Prevention. COVID data tracker: variant proportions. 2022 [cited 2022 Jun 1]. <https://covid.cdc.gov/covid-data-tracker/#variant-proportions>
  31. Centers for Disease Control and prevention. SARS-CoV-2 variant classification and definitions. April 26, 2022 [cited 2022 Jun 1]. <https://www.cdc.gov/coronavirus/2019-ncov/variants/variant-classifications.html>
  32. Selik RM, Mokotoff ED, Branson B, Owen SM, Whitmore S, Hall HI. Revised surveillance case definition for HIV infection – United States, 2014. *MMWR Morb Mortal Wkly Rep.* 2014;63(RR03):1–10. <https://www.cdc.gov/mmwr/preview/mmwrhtml/rr6303a1.htm>
  33. Centers for Disease Control and Prevention. Understanding the HIV care continuum. July 2019 [cited 2022 May 20]. <https://www.cdc.gov/hiv/pdf/library/factsheets/cdc-hiv-care-continuum.pdf>
  34. New York State Department of Health. COVID-19 reinfection data. [cited 2022 Aug 17]. <https://coronavirus.health.ny.gov/covid-19-reinfection-data>
  35. Slezak J, Bruxvoort K, Fischer H, Broder B, Ackerson B, Tartof S. Rate and severity of suspected SARS-Cov-2 reinfection in a cohort of PCR-positive COVID-19 patients. *Clin Microbiol Infect.* 2021;27:1860.e7–10. <https://doi.org/10.1016/j.cmi.2021.07.030>
  36. Nordström P, Ballin M, Nordström A. Risk of SARS-CoV-2 reinfection and COVID-19 hospitalisation in individuals with natural and hybrid immunity: a retrospective, total population cohort study in Sweden. *Lancet Infect Dis.* 2022;22:781–90. [https://doi.org/10.1016/S1473-3099\(22\)00143-8](https://doi.org/10.1016/S1473-3099(22)00143-8)



37. Flacco ME, Acuti Martellucci C, Baccolini V, De Vito C, Renzi E, Villari P, et al. Risk of reinfection and disease after SARS-CoV-2 primary infection: meta-analysis. *Eur J Clin Invest.* 2022;52:e13845. <https://doi.org/10.1111/eci.13845>
38. Centers for Disease Control and Prevention. COVID-19 vaccines for people who are moderately or severely immunocompromised. 2022 [cited 2022 Aug 15]. <https://www.cdc.gov/coronavirus/2019-ncov/vaccines/recommendations/immuno.html>
39. Centers for Disease Control and Prevention. Interim clinical considerations for use of COVID-19 vaccines currently approved or authorized in the United States. 2022 [cited 2022 Aug 15]. <https://www.cdc.gov/vaccines/covid-19/clinical-considerations/interim-considerations-us.html#immunocompromised>
40. Cavanaugh AM, Spicer KB, Thoroughman D, Glick C, Winter K. Reduced risk of reinfection with SARS-CoV-2 after COVID-19 vaccination – Kentucky, May–June 2021. *MMWR Morb Mortal Wkly Rep.* 2021;70:1081–3. <https://doi.org/10.15585/mmwr.mm7032e1>
41. Shrestha NK, Burke PC, Nowacki AS, Terpeluk P, Gordon SM. Necessity of COVID-19 vaccination in persons who have already had COVID-19. *Clin Infect Dis.* 2022.
42. Hall V, Foulkes S, Insalata F, Kirwan P, Saei A, Atti A, et al.; SIREN Study Group. Protection against SARS-CoV-2 after COVID-19 vaccination and previous infection. *N Engl J Med.* 2022;386:1207–20. <https://doi.org/10.1056/NEJMoa2118691>
43. Centers for Disease Control and Prevention. Coronavirus disease 2019 (COVID-19) 2021 case definition. 2022 [cited 2022 Aug 17]. <https://ndc.services.cdc.gov/case-definitions/coronavirus-disease-2019-2021/>
44. Yousaf M, Hameed M, Alsoub H, Khatib M, Jamal W, Ahmad M. COVID-19: prolonged viral shedding in an HIV patient with literature review of risk factors for prolonged viral shedding and its implications for isolation strategies. *Clin Case Rep.* 2021;9:1397–401. <https://doi.org/10.1002/ccr3.3786>
45. Li TZ, Cao ZH, Chen Y, Cai MT, Zhang LY, Xu H, et al. Duration of SARS-CoV-2 RNA shedding and factors associated with prolonged viral shedding in patients with COVID-19. *J Med Virol.* 2021;93:506–12. <https://doi.org/10.1002/jmv.26280>
46. Fontana LM, Villamagna AH, Sikka MK, McGregor JC. Understanding viral shedding of severe acute respiratory coronavirus virus 2 (SARS-CoV-2): Review of current literature. *Infect Control Hosp Epidemiol.* 2021;42:659–68. <https://doi.org/10.1017/ice.2020.1273>
47. Roskosky M, Borah BF, DeJonge PM, Donovan CV, Blevins LZ, Lafferty AG, et al. Notes from the field: SARS-CoV-2 Omicron variant infection in 10 persons within 90 days of previous SARS-CoV-2 Delta variant infection – four states, October 2021–January 2022. *MMWR Morb Mortal Wkly Rep.* 2022;71:524–6. <https://doi.org/10.15585/mmwr.mm7114a2>
48. Nevejan L, Cuyppers L, Laenen L, Van Loo L, Vermeulen F, Wollants E, et al. Early SARS-CoV-2 reinfections within 60 days and implications for retesting policies. *Emerg Infect Dis.* 2022;28:1729–31. <https://doi.org/10.3201/eid2808.220617>
49. Centers for Disease Control and Prevention. Stay up to date with COVID-19 vaccines. [cited 2022 Dec 5]. <https://www.cdc.gov/coronavirus/2019-ncov/vaccines/stay-up-to-date.html>

Address for correspondence: Richard A. Teran, Centers for Disease Control and Prevention, 1600 Clifton Rd NE, Mailstop H21-10, Atlanta, GA 30329-4027, USA; email: RTeran@cdc.gov

## EID Podcast: Animal Reservoirs for Emerging Coronaviruses



Coronaviruses are nothing new. Discovered in the 1930s, these pathogens have circulated among bats, livestock, and pets for years.

Most coronaviruses never spread to people. However, because this evolutionary branch has given rise to three high-consequence pathogens, researchers must monitor animal populations and find new ways to prevent spillover to humans.

In this EID podcast, Dr. Ria Ghai, an associate service fellow at CDC, describes the many animals known to harbor emerging coronaviruses.

**Visit our website to listen:**  
<https://go.usa.gov/x6WtY>

**EMERGING  
INFECTIOUS DISEASES®**

*EID cannot ensure accessibility for supplementary materials supplied by authors. Readers who have difficulty accessing supplementary content should contact the authors for assistance.*

# SARS-CoV-2 Reinfection Risk in Persons with HIV, Chicago, Illinois, USA, 2020–2022

## Appendix

**Appendix Table.** Characteristics of adult Chicago residents with a SARS-CoV-2 infection reported to public health (N = 453 587) by reinfection and HIV status — Chicago, Illinois, January 1, 2020–May 31, 2022\*

Characteristics (no. with available information)	Overall N = 453,587 No. (%)	People with one SARS-CoV-2 infection N = 429,753		People with a SARS-CoV-2 reinfection (two SARS-CoV-2 infections) N = 23,834	
		People with HIV N = 2,694 No. (%)	People without HIV, N = 427,059 No. (%)	People with HIV N = 192 No. (%)	People without HIV N = 23,642 No. (%)
Age at initial SARS-CoV-2 infection, years, median (IQR)*, †	39 (28–53)	47 (35–57)	39 (28–53)	43 (32–57)	36 (27–49)
Age at initial SARS-CoV-2 infection*, † (y)					
18–29	128,169 (28.3)	319 (11.8)	120,130 (28.1)	28 (14.6)	7,692 (32.5)
30–39	107,136 (23.6)	619 (23.0)	100,464 (23.5)	53 (27.6)	6,000 (25.4)
40–49	78,827 (17.4)	581 (21.6)	74,116 (17.4)	37 (19.3)	4,093 (17.3)
50–59	63,804 (14.1)	672 (24.9)	60,209 (14.1)	39 (20.3)	2,884 (12.2)
60–69	42,319 (9.3)	400 (14.9)	40,184 (9.4)	28 (14.6)	1,707 (7.2)
70–79	20,775 (4.6)	94 (3.5)	19,883 (4.7)	6 (3.1)	792 (3.3)
≥80	12,557 (2.8)	9 (0.3)	12,073 (2.8)	1 (0.5)	474 (2.0)
Sex at birth*, †					
Female	240,525 (53.0)	554 (20.6)	225,963 (52.9)	39 (20.3)	13,969 (59.1)
Male	211,512 (46.6)	2,135 (79.3)	199,562 (46.7)	153 (79.7)	9,662 (40.9)
Unknown	1,550 (0.3)	5 (0.2)	1,534 (0.4)	0 (0.0)	11 (0.0)
Race and ethnicity *, †					
Hispanic or Latino	127,307 (28.1)	514 (19.1)	119,263 (27.9)	38 (19.8)	7,492 (31.7)
Non-Hispanic or Latino Asian	17,867 (3.9)	52 (1.9)	16,977 (4.0)	3 (1.6)	835 (3.5)
Non-Hispanic or Latino Black or African American	102,284 (22.6)	1,327 (49.3)	94,482 (22.1)	103 (53.7)	6,372 (27.0)
Non-Hispanic or Latino White	120,939 (26.7)	527 (19.6)	113,506 (26.6)	43 (22.4)	6,863 (29.0)
Non-Hispanic or Latino Other ‡	23,727 (5.2)	87 (3.2)	22,704 (5.3)	4 (2.1)	932 (3.9)
Unknown	61,463 (13.6)	187 (6.9)	60,127 (14.1)	1 (0.5)	1,148 (4.9)
City Region of Residence *, †					
Central	27,823 (6.1)	75 (2.8)	26,381 (6.2)	4 (2.1)	1,363 (5.8)
Far South	46,621 (10.3)	308 (11.4)	43,829 (10.3)	21 (10.9)	2,463 (10.4)
North	80,081 (17.7)	747 (27.7)	74,952 (17.6)	53 (27.6)	4,329 (18.3)

Characteristics (no. with available information)	People with one SARS-CoV-2 infection N = 429,753			People with a SARS-CoV-2 reinfection (two SARS-CoV-2 infections) N = 23,834	
	Overall N = 453,587	People with HIV N = 2,694	People without HIV, N = 427,059	People with HIV N = 192	People without HIV N = 23,642
	No. (%)	No. (%)	No. (%)	No. (%)	No. (%)
Northwest	104,184 (23.0)	260 (9.7)	98,442 (23.1)	24 (12.5)	5,458 (23.1)
South	38,851 (8.6)	497 (18.5)	36,190 (8.5)	28 (14.6)	2,136 (9.0)
Southwest	76,368 (16.8)	307 (11.4)	72,253 (16.9)	20 (10.4)	3,788 (16.0)
West	76,129 (16.8)	481 (17.9)	71,574 (16.8)	42 (21.9)	4,032 (17.1)
Unknown	3,530 (0.8)	19 (0.7)	3,438 (0.8)	0 (0.0)	73 (0.3)
Vaccination status at time of first SARS-CoV-2 infection *					
Completed primary series plus additional dose(s)	35,624 (7.9)	364 (13.5)	34,925 (8.2)	3 (1.6)	332 (1.4)
Completed primary series no additional dose(s)	80,944 (17.9)	568 (21.1)	79,161 (18.5)	13 (6.8)	1,202 (5.1)
Partially vaccinated	15,114 (3.3)	124 (4.6)	14,384 (3.4)	8 (4.2)	598 (2.5)
Unvaccinated	321,905 (71.0)	1,638 (60.8)	298,589 (69.9)	168 (87.5)	21,510 (91.0)
Vaccination status at time of first SARS-CoV-2 infection, by vaccine type*					
Pfizer-BioNTech (completed primary series)	49,538 (10.9)	299 (11.1)	48,532 (11.4)	6 (3.1)	701 (3.0)
Pfizer-BioNTech (completed primary series with additional dose §)	21,795 (4.8)	179 (6.6)	21,432 (5.0)	1 (0.5)	183 (0.8)
Moderna (completed primary series)	24,565 (5.4)	215 (8.0)	23,999 (5.6)	5 (2.6)	346 (1.5)
Moderna (completed primary series with additional dose §)	12,027 (2.7)	162 (6.0)	11,728 (2.8)	2 (1.0)	135 (0.6)
Janssen (completed primary series)	6,401 (1.4)	49 (1.8)	6,198 (1.5)	2 (1.0)	152 (0.6)
Janssen (completed primary series with additional dose §)	1,637 (0.4)	18 (0.7)	1,607 (0.4)	0 (0)	12 (0.1)
Completed primary series – mix or other products ¶	440 (0.1)	5 (0.2)	432 (0.1)	0 (0)	3 (0)
Completed primary series – mix or other products ¶ with additional dose	165 (0)	5 (0.2)	158 (0)	0 (0)	2 (0)
Vaccination status at time of SARS-CoV-2 reinfection, n = 23,834 †					
Completed primary series plus additional dose	5,290 (22.2)	NA	NA	61 (31.8)	5,229 (22.1)
Completed primary series no additional dose	9,444 (39.6)	NA	NA	70 (36.5)	9,374 (39.7)
Partially vaccinated	106 (0.4)	NA	NA	3 (1.6)	103 (0.4)
Unvaccinated	8,994 (37.7)	NA	NA	58 (30.2)	8,936 (37.8)
Vaccination status at time of SARS-CoV-2 reinfection, by vaccine type †					
Pfizer-BioNTech (completed primary series)	5,409 (22.7)	NA	NA	27 (14.1)	5,382 (22.8)
Pfizer-BioNTech (completed primary series with additional dose §)	2,847 (11.9)	NA	NA	23 (12.0)	2,847 (12.0)
Moderna (completed primary series)	3,263 (13.7)	NA	NA	36 (18.8)	3,227 (13.7)
Moderna (completed primary series with additional dose *)	2,194 (9.2)	NA	NA	33 (17.2)	2,161 (9.1)
Janssen (completed primary series)	713 (3.0)	NA	NA	6 (3.1)	707 (3.0)
Janssen (completed primary series with additional dose §)	227 (1.0)	NA	NA	5 (2.6)	222 (0.9)
Completed primary series – mix or other products ¶	59 (0.2)	NA	NA	1 (0.5)	58 (0.2)
Completed primary series – mix or other products ¶ with additional dose ¶	22 (0.1)	NA	NA	0 (0.0)	22 (0.1)
Number of COVID-19 vaccine doses administered after first SARS-CoV-2 infection *, †					
No doses	221,887 (48.9)	1,069 (39.7)	211,791 (49.6)	56 (29.2)	8,971 (38.0)
One dose	64,787 (14.3)	526 (19.5)	61,707 (14.5)	29 (15.1)	2,525 (10.7)
Two doses	89,157 (19.7)	453 (16.8)	80,505 (18.9)	62 (32.3)	8,137 (34.4)
Three doses	71,390 (15.7)	498 (18.5)	66,922 (15.7)	44 (22.9)	3,926 (16.6)
Four doses	6,366 (1.4)	148 (5.5)	6,134 (1.4)	1 (0.5)	83 (0.4)
Initial SARS-CoV-2 infection group *					
Ancestral variant (March 1–December 31, 2020)	188,155 (41.5)	1,009 (37.5)	171,068 (40.1)	130 (67.7)	15,948 (67.5)
Alpha and other pre-Delta variants (January 1–July 10, 2021)	65,782 (14.5)	376 (14.0)	60,240 (14.1)	41 (21.4)	5,125 (21.7)
Delta variant (July 11 – December 18, 2021)	69,757 (15.4)	430 (16.0)	67,465 (15.8)	16 (8.3)	1,846 (7.8)

Characteristics (no. with available information)	Overall N = 453,587 No. (%)	People with one SARS-CoV-2 infection N = 429,753		People with a SARS-CoV-2 reinfection (two SARS-CoV-2 infections) N = 23,834	
		People with HIV N = 2,694 No. (%)	People without HIV, N = 427,059 No. (%)	People with HIV N = 192 No. (%)	People without HIV N = 23,642 No. (%)
Omicron variant (December 19, 2021 – March 1, 2022)	129,893 (28.6)	879 (32.6)	128,286 (30.0)	5 (2.6)	723 (3.1)
Time since HIV diagnosis at initial SARS-CoV-2 infection, years, median (IQR), n = 2,886	12.8 (6.3–19.7)	12.7 (6.2–19.6)	NA	13.0 (6.3–20.6)	NA
Time since HIV diagnosis at initial SARS-CoV-2 infection, n = 2,886 (y)					
<1	97 (3.4)	90 (3.3)	NA	7 (3.7)	NA
1–4	464 (16.1)	435 (16.2)	NA	29 (15.1)	NA
5–9	589 (20.4)	558 (20.7)	NA	31 (16.2)	NA
≥10	1,736 (60.2)	1,611 (59.8)	NA	125 (65.1)	NA
HIV infection exposure category, n = 2,886					
Adult MSM	1,713 (59.3)	1,592 (59.1)	NA	121 (63.0)	NA
Adult IDU	115 (4.0)	107 (4.0)	NA	8 (4.2)	NA
Adult heterosexual contact	380 (13.2)	356 (13.2)	NA	24 (12.5)	NA
Adult MSM and IDU	118 (4.1)	109 (4.1)	NA	9 (4.7)	NA
Adult IDU and heterosexual contact	89 (3.1)	81 (3.0)	NA	8 (4.2)	NA
Perinatal exposure	26 (1.0)	22 (0.8)	NA	4 (2.1)	NA
No risk factor reported or identified	445 (15.4)	427 (15.9)	NA	18 (9.4)	NA
History of AIDS at initial SARS-CoV-2 infection #, n = 2,886	1,359 (47.1)	1,260 (46.8)	NA	99 (51.6)	NA
Most recent reported CD4 at initial SARS-CoV-2 infection, cells/mm3, median (IQR), n = 2,780	613.0 (390.5–844.0)	615.0 (393.0–845.0)	NA	591.8 (337.0–824.0)	NA
Most recent reported CD4 at initial SARS-CoV-2 infection, cells/mm3, n = 2,886					
<200	244 (8.5)	219 (8.1)	NA	25 (13.0)	NA
200–349	259 (9.0)	245 (9.1)	NA	14 (7.3)	NA
350–499	380 (13.2)	351 (13.0)	NA	29 (15.1)	NA
≥500	1,513 (52.4)	1,416 (52.6)	NA	97 (50.5)	NA
Missing or CD4 count data >1 y from initial infection**	490 (17.0)	463 (17.2)	NA	27 (14.1)	NA
Most recent reported viral load at initial SARS-CoV-2 infection, copies/mL, n = 2,886					
Virally suppressed (<200)	2,213 (76.7)	2,063 (76.6)	NA	150 (78.1)	NA
Not virally suppressed (≥200)	280 (9.7)	260 (9.7)	NA	20 (10.4)	NA
Missing or viral load data >1 y from initial infection **	393 (13.6)	371 (13.8)	NA	22 (11.5)	NA

Abbreviations: IQR = interquartile range; NA = not applicable; MSM, men who have sex with men; IDU, injection drug use.

\* P values for characteristic were statistically significantly (p < 0.05) different when comparing persons with only one SARS-CoV-2 infection, by HIV status.

† P values for characteristic were statistically significantly (p < 0.05) different when comparing persons with a SARS-CoV-2 reinfection (two SARS-CoV-2 infections), by HIV status.

‡ Persons with the following races listed in I-NEDSS as American Indian or Alaska Native, Native Hawaiian or other Pacific Islander, other, or multiracial were categorized as Non-Hispanic or Latino Other.

§ Additional dose type does not match the primary series vaccine type in all cases.

¶ Persons received two doses of COVID-19 vaccine. Products were either mixed (e.g., received Pfizer for dose 1 and Moderna for dose 2) or persons received a non-U.S. authorized COVID-19 vaccine for either dose.

# History of AIDS defined as person meeting immunologic or clinical criteria to be categorized as HIV Stage 3.

\*\* HIV CD4 and viral load data were evaluated for all persons with HIV. Last known CD4 and viral load data reported to public health >1 y before the initial SARS-CoV-2 infection was categorized as missing.