

3. Sparrow AK, Brosseau LM, Harrison RJ, Osterholm MT. Protecting Olympic participants from COVID-19 – the urgent need for a risk-management approach. *N Engl J Med*. 2021;385:e2. <https://doi.org/10.1056/NEJMp2108567>
4. American Academy of Pediatrics. COVID-19 interim guidance: return to sports and physical activity. [cited 2022 Jul 10]. <https://www.aap.org/en/pages/2019-novel-coronavirus-covid-19-infections/clinical-guidance/covid-19-interim-guidance-return-to-sports>
5. Atherstone C, Siegel M, Schmitt-Matzen E, Sjoblom S, Jackson J, Blackmore C, et al. SARS-CoV-2 transmission associated with high school wrestling tournaments – Florida, December 2020–January 2021. *MMWR Morb Mortal Wkly Rep*. 2021;70:141–3. <https://doi.org/10.15585/mmwr.mm7004e4>

---

Address for correspondence: Munehisu Fukusumi, Center for Field Epidemic Intelligence, Research and Professional Development, National Institute of Infectious Diseases, Japan, J1601 Iidabashi Plano stage Bldg, 2-7-2 Fujimi, Chiyoda-ku, Tokyo 102-0071, Japan; email: munesumi@niid.go.jp

---

## Case of Carbapenem-Resistant *Salmonella* Typhi Infection, Pakistan, 2022

Summiya Nizamuddin, Ejaz Ahmed Khan, Marie Anne Chattaway, Gauri Godbole

Author affiliations: Shaukat Khanum Memorial Cancer Hospital and Research Centre, Lahore, Pakistan (S. Nizamuddin); Shifa International Hospital at Shifa Tameer-e-Millat University, Islamabad, Pakistan (E.A. Khan); UK Health Security Agency, London, United Kingdom (M.A. Chattaway, G. Godbole)

DOI: <https://doi.org/10.3201/eid2911.230499>

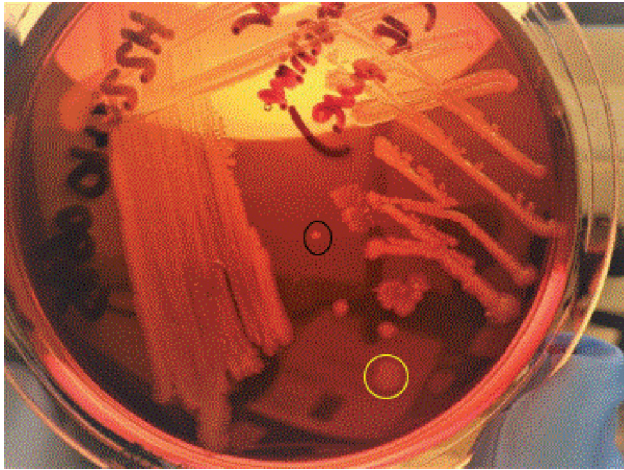
*Salmonella* Typhi infection in a patient in Pakistan initially responded to standard treatment but failed to respond to subsequent treatment. The first strain was susceptible to carbapenems and azithromycin; subsequent strains harbored the NDM-5 gene. Treatment with a combination of intravenous meropenem and colistin was successful. Carbapenem-resistant *Salmonella* Typhi emergence will hinder treatment.

Extensively drug-resistant (XDR) *Salmonella* was first reported in Sindh, Pakistan, in 2016 (1). Since then, several districts have reported cases caused by multiple XDR *S. enterica* serovar Typhi variants belonging to clade H58 and carrying multiple novel genomic integrations of the extended-spectrum  $\beta$ -lactamase gene (2,3). Most cases are managed with meropenem and azithromycin, and most national guidelines recommend those drugs for treating cases of *Salmonella* Typhi in Pakistan (4,5). We report a case of carbapenem-resistant *Salmonella* Typhi infection that required treatment with a last-resort antimicrobial drug.

A 7-year-old girl in Peshawar, Pakistan, visited a government hospital in July 2022 because of fever, chills, rigors, and urinary signs/symptoms. She had Down syndrome with congenital heart disease, including moderate atrial septal defect, large inlet ventricular septal defect, small patent ductus arteriosus defects, ventricular hypertrophy, and severe pulmonary hypertension; and she had a history of reoccurring lower respiratory tract infections, which often required hospitalization and treatment with antimicrobial drugs. Macrolides and carbapenems had been previously prescribed. Specific information regarding previous hospital admissions was not available. The child had received routine childhood vaccinations but not typhoid vaccine.

The patient was hospitalized for suspected enteric fever. At admission, leukocyte count was  $7.6 \times 10^9$  cells/L and C-reactive protein (CRP) level was 120 mg/dL. Initial empiric treatment was ceftriaxone, but treatment was modified after blood cultures indicated XDR *Salmonella* Typhi, resistant to ampicillin, third-generation cephalosporins, fluoroquinolones, chloramphenicol, and cotrimoxazole but susceptible to azithromycin and meropenem. Treatment was switched to intravenous meropenem (300 mg 3 $\times$ /d) and oral azithromycin (200 mg/5 mL 1 $\times$ /d) for 10 days. The strain from the culture was not saved and was unavailable for additional testing. The patient responded positively to treatment, indicated by decreased CRP levels (7 mg/dL at treatment completion). No clearance blood cultures were obtained before discharge.

One month later, fever and decreased appetite developed; blood was collected at a private laboratory, and cultures were requested. We monitored the blood culture on a BACT/ALERT VIRTUO automated system (bioMérieux, <https://www.biomerieux.com>). When the bottle was flagged as positive for gram-negative rods, we subcultured onto chocolate, blood, and MacConkey agar plates; after 24 hours, oxidase-negative, non-lactose fermenters were identified. *Salmonella* Typhi was identified on the API 20E and Vitek MS (bioMérieux) systems. Antimicrobial



**Figure.** *Salmonella* Typhi colony on MacConkey agar, isolated from patient during clinical relapse of carbapenem-resistant *Salmonella* Typhi infection, Pakistan, 2022. Variant 1, circled in yellow, is a large gray dull colony. Variant 2, circled in black, is a small whitish shiny colony.

susceptibility testing was initially performed via the disc diffusion Kirby-Bauer method, according to Clinical Laboratory Standards Institute guidelines (<https://www.clsi.org>). The isolate was resistant to ampicillin, third-generation cephalosporins, fluoroquinolones, chloramphenicol, cotrimoxazole, azithromycin, and meropenem. We further confirmed susceptibility results on the Vitek 2 system. MICs for meropenem and azithromycin were  $>32$   $\mu\text{g}/\text{mL}$ . We confirmed results by using bioMérieux Etest strips. MIC for colistin, determined by disk-elution method, was 1  $\mu\text{g}/\text{mL}$ .

The patient's parents were informed about the pan-resistant nature of the isolate, and the patient was re-

ferred to a private hospital for further management. At admission, she had fever, anorexia, and abdominal pain but was not in distress and was active and alert (Glasgow Coma Scale score 15/15). She had dysmorphic features consistent with Down syndrome. Her chest was bilaterally clear, and respiratory rate was within reference limits. Her abdomen was soft, nontender, and nondistended, with no hepatosplenomegaly. On auscultation of the cardiovascular system, fixed splitting of S2 and grade 3 holosystolic murmur were audible. The patient's extremities exhibited no skin lesions and were well perfused. Initial investigations indicated leukocyte count 7,600 cells/ $\mu\text{L}$ , hemoglobin 14.4 g/dL, platelets 61,000 cells/ $\mu\text{L}$ , and CRP 11.86 mg/L. Chest radiographs revealed mild cardiomeastinal magnification and congestive changes along with right hilar congestion but no consolidation, collapse, or definite pneumothorax. Costophrenic angles were intact.

After admission, treatment with intravenous meropenem (700 mg 3 $\times$ /d infused over 2 h) and intravenous colistin (40 mg 2 $\times$ /d) was initiated. The patient was closely monitored and became afebrile on day 3 of therapy. A 2-dimensional echocardiogram showed no vegetations. Results of repeat blood cultures and fecal cultures were negative. The patient was discharged after completing 11 days of treatment. At a 2-week follow-up visit, she was back to her usual state of health; typhoid vaccination 2 weeks later was recommended.

The isolate obtained during relapse was sent to the UK Gastrointestinal Bacteria Reference Unit, where we confirmed *Salmonella* Typhi by PCR (6) and cultured it on blood and MacConkey agar plates to ensure purity. We isolated 2 distinct morphologic variants: variant

**Table.** MICs and antimicrobial drug resistance determinants of *Salmonella* Typhi isolated from patient during clinical disease relapse of carbapenem-resistant *Salmonella* Typhi infection, Pakistan, 2022\*

Antimicrobial drug	1790097 (variant 1)		1790125 (variant 2)	
	Gene/ mutation	MIC, $\mu\text{g}/\text{L}$	Gene/mutation	MIC, $\mu\text{g}/\text{L}$
Ampicillin	<i>bla</i> <sub>NDM-5</sub> , <i>bla</i> <sub>TEM-1</sub>	32	<i>bla</i> <sub>NDM-5</sub> , <i>bla</i> <sub>TEM-1</sub> , <i>bla</i> <sub>CTX-M-15</sub>	32
Azithromycin	<i>mphA</i>	64	<i>mphA</i>	64
Cefoxitin	<i>bla</i> <sub>NDM-5</sub>	64	<i>bla</i> <sub>NDM-5</sub>	64
Tetracycline	<i>tetA</i>	32	<i>tetA</i>	32
Tigecycline	NA	0.25	NA	0.25
Ertapenem	<i>bla</i> <sub>NDM-5</sub>	2	<i>bla</i> <sub>NDM-5</sub>	2
Imipenem	<i>bla</i> <sub>NDM-5</sub>	16	<i>bla</i> <sub>NDM-5</sub>	16
Meropenem	<i>bla</i> <sub>NDM-5</sub>	16	<i>bla</i> <sub>NDM-5</sub>	16
Cefotaxime	<i>bla</i> <sub>NDM-5</sub>	64	<i>bla</i> <sub>NDM-5</sub> , <i>bla</i> <sub>CTX-M-15</sub>	64
Ceftazidime	<i>bla</i> <sub>NDM-5</sub>	128	<i>bla</i> <sub>NDM-5</sub> , <i>bla</i> <sub>CTX-M-15</sub>	128
Cefepime	<i>bla</i> <sub>NDM-5</sub>	32	<i>bla</i> <sub>NDM-5</sub> , <i>bla</i> <sub>CTX-M-15</sub>	32
Nalidixic acid	<i>gyrA</i> [83:S-F]	64	<i>gyrA</i> [83:S-F], <i>qnrS1</i>	64
Ciprofloxacin	<i>gyrA</i> [83:S-F]	1	<i>gyrA</i> [83:S-F], <i>qnrS1</i>	8
Chloramphenicol	NA	8	<i>catA</i>	64
Trimethoprim	<i>dfrA-27</i> , <i>dfrA-7</i>	16	<i>dfrA-27</i> , <i>dfrA-7</i>	16
Sulfonamide	<i>sul-1</i>	512	<i>sul-1</i>	512
Amikacin	<i>aac(6')-Ib-cr</i> , <i>aac(6')-Ia</i>	$\leq 4$	<i>aac(6')-Ib-cr</i> , <i>aac(6')-Ia</i>	8
Gentamicin	<i>aac(6')-Ib-cr</i> , <i>aadA-16</i> , <i>aac(6')-Iy</i>	$\leq 0.5$	<i>aac(6')-Ib-cr</i> , <i>aadA-16</i> , <i>aac(6')-Iy</i>	$\leq 0.5$
Temocillin	<i>bla</i> <sub>NDM-5</sub>	128	<i>bla</i> <sub>NDM-5</sub>	128
Colistin	NA	1	NA	1

\*Boldface indicates additional genes detected and increased MIC values for variant 2. NA, not applicable.

1 (large colony, isolate 1790097) and variant 2 (small colony, isolate 1790125) (Figure). Each variant underwent whole-genome sequencing for single-nucleotide polymorphism typing, core-genome multilocus sequence typing, and antimicrobial resistance determination (7,8). We analyzed phylogeny of both strains in the context of *Salmonella* Typhi reported in England in 2016–2019 (Appendix Figure, <https://wwwnc.cdc.gov/EID/article/29/11/23-0499-App1.pdf>) and visualized them on ITOL (9). We performed MIC testing by using a Thermo Scientific sensititre broth microdilution system (<https://www.thermofisher.com>) on EUVSEC2 and EUVSEC3 plates and confirmed carbapenemase production by Liofilchem metallo- $\beta$ -lactamase Etest (<http://www.liofilcheminc.com>). Breakpoints and screening concentration criteria used for interpretation were recommended by the European Committee on Antimicrobial Susceptibility Testing (10).

Variants 1 and 2 were XDR *Salmonella* Typhi, resistant to azithromycin and carbapenems; variant 2 had additional antimicrobial resistance determinants (Table). Testing with the metallo- $\beta$ -lactamase Etest indicated that both variants were carbapenemase producers.

The most likely explanation for the patient's relapse, with *Salmonella* Typhi resistant to carbapenems and azithromycin resulting from acquisition of new resistance determinants *bla*<sub>NDM-5</sub> and *mphA*, is multiple genetic mutations acquired via a mobile transmissible element such as a plasmid from gut microbiota. Previous receipt of carbapenems and azithromycin for multiple respiratory infections likely led to harboring and selection pressure for carbapenemase-producing strains. Another possibility is a suboptimal host immune response because of Down syndrome, although the patient had not undergone an immunology assessment. Expansion of antimicrobial-resistant strains will make such infections extremely difficult to treat.

### Acknowledgments

We thank Amy Gentle for the phenotypic MIC testing.

M.A.C. is affiliated with the National Institute for Health Research, Health Protection Research Unit in Genomics and Enabling Data at University of Warwick in partnership with the UK Health Security Agency. The views expressed are those of the author(s) and not necessarily those of the National Institute for Health Research, the Department of Health and Social Care, or the UK Health Security Agency.

### About the Author

Dr. Nizamuddin is the consultant medical microbiologist and section head at the Shaukat Khanum Memorial Cancer

Hospital and Research Centre in Lahore, Pakistan. Her research interests include antibiotic resistance surveillance, antibiotic stewardship, and telepathology.

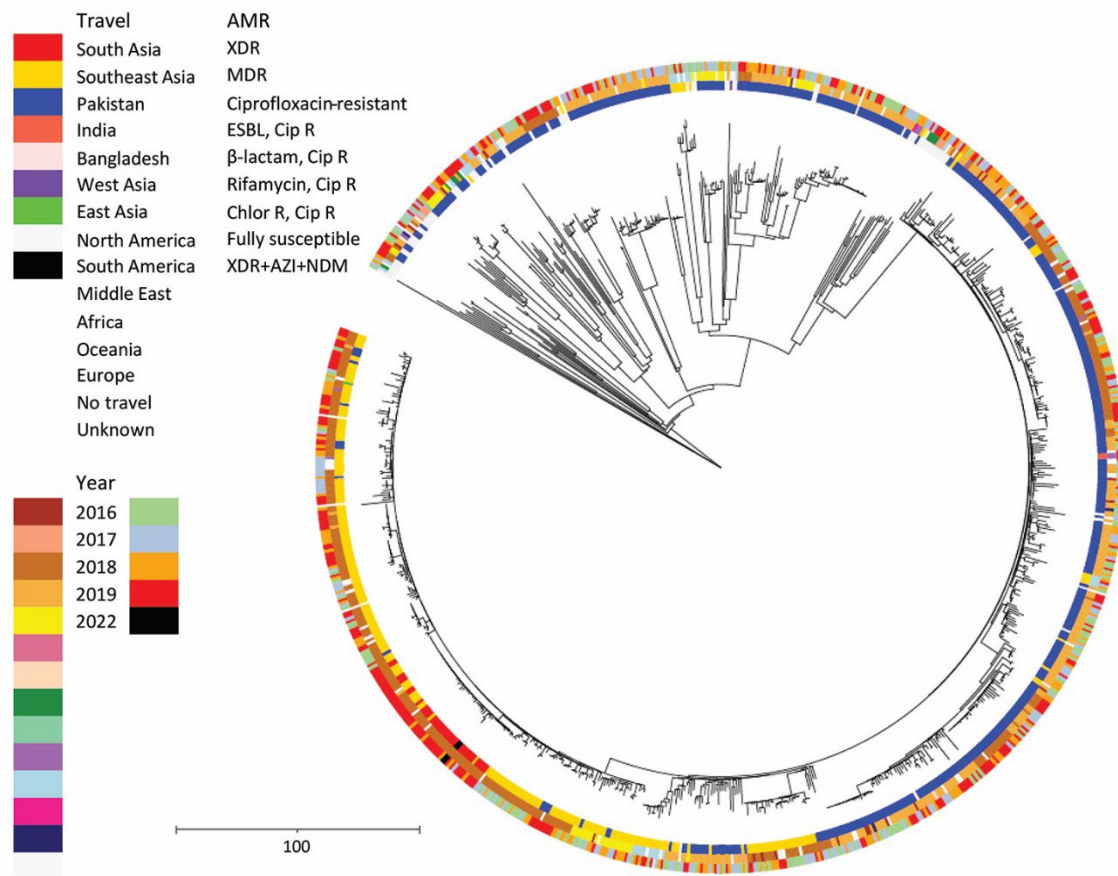
### References

- Klemm EJ, Shakoore S, Page AJ, Qamar FN, Judge K, Saeed DK, et al. Emergence of an extensively drug-resistant *Salmonella enterica* serovar Typhi clone harboring a promiscuous plasmid encoding resistance to fluoroquinolones and third-generation cephalosporins. *MBio*. 2018;9:e00105-18. <https://doi.org/10.1128/mBio.00105-18>
- Kamal R, Ching C, Zaman MH, Sultan F, Abbas S, Khan E, et al. Identification of multiple variant extensively drug-resistant typhoid infections across Pakistan. *Am J Trop Med Hyg*. 2023;108:278–84. <https://doi.org/10.4269/ajtmh.22-0071>
- Nair S, Chattaway M, Langridge GC, Gentle A, Day M, Ainsworth EV, et al. ESBL-producing strains isolated from imported cases of enteric fever in England and Wales reveal multiple chromosomal integrations of *bla*<sub>CTX-M-15</sub> in XDR *Salmonella* Typhi. *J Antimicrob Chemother*. 2021;76:1459–66. <https://doi.org/10.1093/jac/dkab049>
- Nabarro LE, McCann N, Herdman MT, Dugan C, Ladhani S, Patel D, et al. British infection association guidelines for the diagnosis and management of enteric fever in England. *J Infect*. 2022;84:469–89. <https://doi.org/10.1016/j.jinf.2022.01.014>
- Medical Microbiology & Infectious Diseases Society of Pakistan. Typhoid management guidelines 2022 [cited 2023 Apr 1]. <https://www.mmisp.com/wp-content/uploads/2023/03/Typhoid-Management-Guideline-2022-Jun-22.pdf>
- Nair S, Patel V, Hickey T, Maguire C, Greig DR, Lee W, et al. Real-time PCR assay for differentiation of typhoidal and nontyphoidal *Salmonella*. *J Clin Microbiol*. 2019;57:e00167-19. <https://doi.org/10.1128/JCM.00167-19>
- Dallman T, Ashton P, Schafer U, Jironkin A, Painset A, Shaaban S, et al. SnapperDB: a database solution for routine sequencing analysis of bacterial isolates. *Bioinformatics*. 2018;34:3028–9. <https://doi.org/10.1093/bioinformatics/bty212>
- Chattaway MA, Dallman TJ, Larkin L, Nair S, McCormick J, Mikhail A, et al. The transformation of reference microbiology methods and surveillance for *Salmonella* with the use of whole genome sequencing in England and Wales. *Front Public Health*. 2019;7:317. <https://doi.org/10.3389/fpubh.2019.00317>
- Chattaway MA, Gentle A, Nair S, Tingley L, Day M, Mohamed I, et al. Phylogenomics and antimicrobial resistance of *Salmonella* Typhi and Paratyphi A, B and C in England, 2016-2019. *Microb Genom*. 2021;7:000633. <https://doi.org/10.1099/mgen.0.000633>
- The European Committee on Antimicrobial Susceptibility Testing. Breakpoint tables for interpretation of MICs and zone diameters. Version 13.0, 2023 [cited 2023 Apr 1]. <http://www.eucast.org>

Address for correspondence: Summiya Nizamuddin, Shaukat Khanum Memorial Cancer Hospital and Research Centre Pathology, 7 A, Block R 3, Johar Town Lahore Lahore State 12345, Pakistan; email: summi.niz@gmail.com

# Case of Carbapenem-Resistant *Salmonella* Typhi Infection, Pakistan, 2022

## Appendix



**Appendix Figure.** Phylogeny of the *Salmonella* Typhi in England, 2016–2019, including imported ESBL producing strains (*bla*<sub>CTX-M-15</sub>) and the case for Pakistan. Phylogenetic tree of cgMLST analysis of *S.* Typhi strains generated using the neighbor-joining method and mapped against three categories: inner ring, AMR (XDR, extensively drug resistant strains; MDR, multidrug resistant strains; Cip R, ciprofloxacin-resistant strains; ESBL, extended-spectrum β-lactamase producing strains; Chlor R, chloramphenicol-resistant strains, XDR+AZI+NDM, XDR with azithromycin and carbapenemase resistance); middle ring, travel; outer ring, year. Both pan-resistant strains from 2022 (black) fall into the HC5\_1452 XDR sub-cluster associated with travel to Pakistan.