

# SARS-CoV-2 Antibody Prevalence and Population-Based Death Rates, Greater Omdurman, Sudan

Wendelin Moser, Mohammed Ahmed Hassan Fahal,<sup>1</sup> Elamin Abualas,<sup>1</sup> Shahinaz Bedri, Mahgoub Taj Elsir, Mona Fateh El Rahman Omer Mohamed, Abdelhalim Babiker Mahmoud, Amna Ismail Ibrahim Ahmad, Mohammed A. Adam, Sami Altalib, Ola Adil DafaAllah, Salahaldin Abdallah Hmed, Andrew S. Azman, Iza Ciglenecki, Etienne Gignoux, Alan González, Christine Mwongera, Manuel Albela Miranda

In a cross-sectional survey in Omdurman, Sudan, during March–April 2021, we estimated that 54.6% of the population had detectable severe acute respiratory syndrome coronavirus 2 antibodies. Overall population death rates among those  $\geq 50$  years of age increased 74% over the first coronavirus disease pandemic year.

Many key epidemiologic and serologic characteristics of severe acute respiratory syndrome coronavirus 2 (SARS-CoV-2) remain unknown. Few seroprevalence studies have been conducted in Africa to better understand the landscape of humoral immunity. In Sudan, 32,846 confirmed cases of coronavirus disease (COVID-19) were recorded during March 13, 2020–April 10, 2021; of those, 72% were registered in the state of Khartoum alone (1). A study of a convenience sample of  $\geq 1,000$  participants from 22 neighborhoods of the city of Khartoum in March–July 2020 found that 35% of participants were positive by real time RT-PCR for SARS-CoV-2, and 18% had SARS-CoV-2 antibodies (2). Similar discrepancies between clinical confirmed cases and infection rates assessed

by serology or PCR testing independent of symptoms have been described elsewhere in Africa (3–5).

The National Health Review Ethics Committee (no. 3-1-21), Médecins Sans Frontières Ethics Review Board (ID 2089c), and Khartoum State Ministry of Health approved this study. Before field data collection began, we visited the leader of the resistance committee for each block to obtain verbal consent. For the mortality survey, we obtained verbal consent from the head of the household. For the seroprevalence survey, we obtained written informed consent from adults and, for participants  $< 18$  years of age, first written informed consent from parents or legal guardians and second, oral assent from the participants themselves.

## The Study

Sudan's capital, Khartoum, is a tripartite metropolis comprising Khartoum, Bahri, and Omdurman; it has  $> 8$  million inhabitants (6). We chose Omdurman, the largest of the 3 cities, as the study site for 2 surveys conducted in March–July 2020 (Appendix, <https://wwwnc.cdc.gov/EID/article/28/5/21-1951-App1.pdf>). One, a retrospective mortality survey, was conducted using a 2-stage cluster sampling methodology based on random geopoints with 2 recall periods, the prepandemic (January 1, 2019–February 29, 2020) and the pandemic period (March 1, 2020–date of survey); an adult representative of the household answered a standardized questionnaire. The second was a nested SARS-CoV-2 antibody prevalence survey; all the members of a subset of the household, regardless of age, were invited to participate in the seroprevalence study.

Capillary blood was collected on dried blood spot cards and directly tested with the STANDARD

Author affiliations: Médecins Sans Frontières, Geneva, Switzerland (W. Moser, A.S. Azman, I. Ciglenecki, A. González, C. Mwongera, M. Albela Miranda); Médecins Sans Frontières, Khartoum (M.T. Elsir, A.B. Mahmoud, A.I.I. Ahmad, M.A. Adam, S. Altalib, O.A. DafaAllah, S.A. Hmed); Khartoum State Ministry of Health, Khartoum, Sudan (M.A.H. Fahal, E. Abualas, S. Bedri, M.T. Elsir, M.F.E.R.O. Mohamed, O.A. DafaAllah); National Public Health Laboratory, Khartoum (E. Abualas, S. Bedri, O.A. DafaAllah); University of Khartoum, Khartoum (A.B. Mahmoud, M.A. Adam, S. Altalib); Johns Hopkins Bloomberg School of Public Health, Baltimore, Maryland, USA (A.S. Azman); University of Geneva, Geneva (A.S. Azman); Epicentre, Paris, France (E. Gignoux)

DOI: <https://doi.org/10.3201/eid2805.211951>

<sup>1</sup>These authors contributed equally to this article.

	Mortality survey	Mortality survey RDT/Serology survey	Mortality survey RDT/Serology survey Dry blood spot
No. households visited (4,086)	3,464	307	315
Refused (207)	151	26	30
Absent (163)	152	6	5
Total included (3,716)	3,161	275	280
No. persons in the survey (27,315)	23,200	1,954	2,161
Dead (319)	272	22	25
Left the household (1,589)	1,330	126	133
Refused RDT (719)		289	430
Absent (716)		333	383
Total with serology data (2,374)		1,184	1,190
Refused DBS (119)			119
Accepted DBS (1,071)			1,071
Total with analyzed DBS (829)			829

**Figure 1.** Survey flow for cross-sectional study of SARS-CoV-2 prevalence and population-based death rates, Omdurman, Sudan, 2021. DBS, dry blood spot; RDT, rapid diagnostic test.

Q COVID-19 IgM/IgG Combo rapid diagnostic test (RDT) (SD-Biosensor, <https://www.sdbiosensor.com>). All participants who tested positive for any isotype were considered seropositive. Dried blood spot cards (Euroimmun, <https://www.euroimmun.com>) were transferred to the National Public Health Laboratory (NPHL; Khartoum, Sudan) for further analysis by ELISA (Anti-SARS-CoV-2 ELISA [IgG, S1 domain]; Euroimmun) to compare with the rapid test results (7,8). To adjust our seroprevalence estimates using published validation data for both ELISA and RDT tests, we conducted a meta-analysis with random effects and a Bayesian latent class model (Appendix).

During March 1–April 10, 2021, a total of 2,374 (62.3%) participants from 555 households (Figure 1) agreed to provide blood; 34.3% (95% CI 32.4%–

36.2%; Table 1) of them had detectable SARS-CoV-2 antibodies (IgM, IgG, or both). After adjusting for immunoassay performance for detecting previous infections, we estimated a seroprevalence of 54.6% (95% CI 51.4%–57.8%), noting a clear increase of seroprevalence risk with age (Table 1). We found the highest seroprevalence of 80.7% (95% CI 71.7%–89.7%) among participants ≥50 years of age. Assuming a population size of 3,040,604 for Omdurman on the basis of the data collected in the survey and the data provided by the Ministry of Planning, we estimate that 1,660,170 (95% CI 1,458,225–1,863,936) persons had been infected by SARS-CoV-2 at the time of the survey.

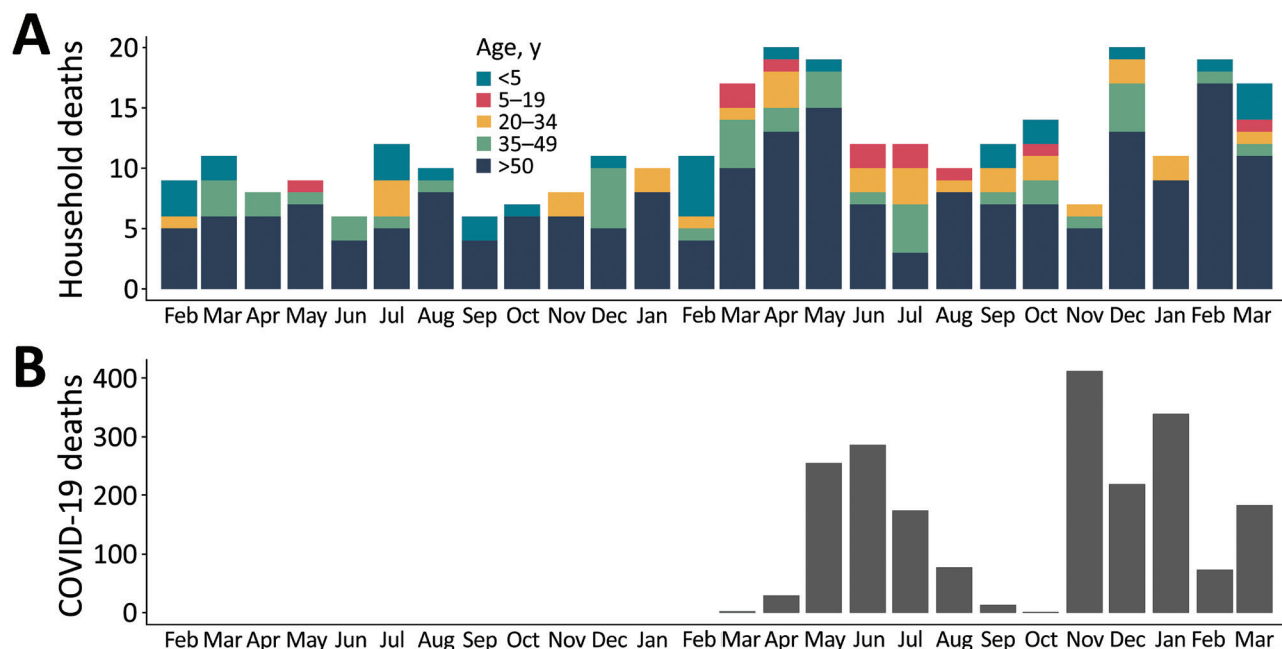
We found evidence of significant clustering of seropositivity within households; 364 households (65.6%) had ≥1 positive household member. Living

**Table 1.** SARS-CoV-2 antibody seroprevalence test results by age group in cross-sectional survey, Omdurman, Sudan\*

Age group	RDT results			Adjusted results		
	% Positive (95% CI)	Relative risk (95% CI)	p value†	Seroprevalence (95% CI)	Relative risk (95% CI)	p value†
<5 y, = 299	18.7 (14.7–23.5)	0.4 (0.3–0.5)	<0.001	29.0 (22.4–36.9)	0.3 (0.3–0.4)	<0.001
5–19 y, = 786	30.6 (27.5–33.9)	0.6 (0.5–0.7)	<0.001	48.5 (43.3–53.9)	0.6 (0.5–0.6)	<0.001
20–34 y, = 629	35.5 (31.8–39.3)	0.7 (0.6–0.8)	<0.001	56.5 (50.5–62.8)	0.7 (0.6–0.7)	<0.001
35–49 y, = 342	39.5 (34.4–44.7)	0.8 (0.7–0.9)	0.006	63.1 (54.8–71.8)	0.8 (0.7–0.9)	<0.001
≥50 y, = 319	50.2 (44.7–55.6)	Referent		80.7 (71.7–89.7)	Referent	
Overall, = 2,375	34.3 (32.4–36.2)			54.6 (51.4–57.8)		

\*RDT, rapid diagnostic test; SARS-CoV-2, severe acute respiratory syndrome coronavirus 2.

†p values indicate the difference in relative risk between the oldest age group (≥50 y) as reference and the other age groups.



**Figure 2.** Comparison of estimated and reported deaths from coronavirus disease, Sudan, January 2019–April 2021. A) Distribution of all deaths as reported in a population-based cross-sectional survey in the city of Omdurman, Sudan. B) Official registered COVID-19–related deaths across Sudan.

with a person who was seropositive led to a 1.68-fold (odds ratio [OR] 95% CI 1.35–2.08;  $p < 0.001$ ) increase in the odds of being seropositive (Appendix). Among the 4,086 households visited (Figure 1), we enumerated 27,315 persons who had been a household member at some time after January 1, 2019. Among them, 319 deaths were reported, including 206 (64.6%) among persons  $\geq 50$  years of age and 30 (9.4%) among children  $< 5$  years of age. The deaths increased in 2020 during the pandemic period, consistent with the reported countrywide confirmed COVID-19 deaths (Figure 2).

The overall death rate for the whole recall period was 0.16 (95% CI 0.13–0.18) deaths/10,000 population/day (Table 2). The crude death rate significantly increased by 67% (95% CI 32%–110%) from 0.12 (0.10–0.14) deaths/10,000 population/day for the prepandemic period to 0.20 (0.16–0.23) deaths/10,000 population/day for the pandemic period. This

difference was even more pronounced among those  $\geq 50$  years of age; deaths increased 74% (95% CI 30%–133%;  $p < 0.001$ ) between the 2 periods. (Table 2). On the basis of our estimates of the population size of Omdurman and the death rates, we estimated 7,113 excess deaths (95% CI 5,015–9,505) during the pandemic period and that 5,125 (95% CI 4,165–6,226) of these occurred in persons  $\geq 50$  years of age.

## Conclusions

Our findings indicate that mortality rates in the overall population of Omdurman increased by 67% during the first pandemic year; the highest increase (74%) was among the population  $\geq 50$  years of age. We estimated an excess of 7,113 all-cause deaths during the pandemic period, compared with 287 COVID-19–related deaths officially reported for Omdurman; these data were obtained from the Khartoum Ministry of Health. We have considered the potential limitation of having

**Table 2.** Reported death rates for the prepandemic and pandemic periods from cross-sectional SARS-CoV-2 survey, Omdurman, Sudan\*

Age group	Overall		Prepandemic period		Pandemic period		Rate ratio	
	No. deaths	Rate (95% CI)	No. deaths	Rate (95% CI)	No. deaths	Rate (95% CI)	Rate ratio (95% CI)	p value
<5 y	30	0.19 (0.10–0.28)	18	0.22 (0.11–0.32)	12	0.17 (0.04–0.30)	0.77 (0.34–1.70)	0.613
5–19 y	13	0.02 (0.01–0.03)	2	0.00 (0.00–0.01)	11	0.03 (0.01–0.05)	Referent	NA
20–34 y	30	0.05 (0.03–0.07)	10	0.04 (0.01–0.06)	20	0.07 (0.04–0.11)	1.75 (0.78–4.19)	0.199
35–49 y	40	0.12 (0.09–0.16)	16	0.09 (0.05–0.14)	24	0.15 (0.09–0.21)	1.67 (0.85–3.36)	0.149
$\geq 50$ y	206	0.78 (0.65–0.91)	80	0.57 (0.45–0.69)	126	0.99 (0.79–1.20)	1.74 (1.30–2.33)	<0.001
Total	319	0.16 (0.13–0.18)	126	0.12 (0.10–0.14)	193	0.20 (0.16–0.23)	1.67 (1.32–2.10)	<0.001

\*No. deaths per category are reported rates. NA, not applicable; SARS-CoV-2, severe acute respiratory syndrome coronavirus 2.

a recall period >2 years for mortality estimates, which could introduce bias for deaths occurring at the beginning of the recall period. Surveyors were trained to be aware of this factor to mitigate those bias (Appendix).

The crude seroprevalence estimate shows how widespread SARS-CoV-2 infection was, affecting all age groups, especially persons  $\geq 50$  years of age. However, the estimates based on RDT results might have underestimated the seroprevalence as a result of several limitations. First, we conducted our survey 1 year after the earliest SARS-CoV-2 infection was detected in Sudan, so a varying degree of antibody decay over time could be expected (9,10). Second, when antibodies remain present in the blood, their detection is limited by the performance of the RDT (11). To overcome those limitations, we adjusted the crude results; we observed a 20% increase in the overall seroprevalence. With that estimation we calculated that the number of infections was 50 times higher than the number of COVID-19 cases recorded by the end of the survey, which was consistent with other case-to-infection ratios in low-income settings in Africa and Asia (12,13). Despite this high seroprevalence, another wave of infection occurred right after the survey (May–June 2021); comparing it with the previous wave, we saw that fewer cases but more deaths per case were reported. Three more waves occurred during September 2021–January 2022, the latest one reporting a record number of weekly cases (14). No sequencing data was available as of January 2022; therefore, it was impossible to discuss the emergence of new variants and their impact on the new waves of infections given the prior seroprevalence we estimated in this survey.

In summary, this population-based cross-sectional survey in Omdurman, Sudan, demonstrated significantly higher death rates during the COVID-19 pandemic compared with those of the prepandemic period, particularly affecting persons  $\geq 50$  years of age. We also found elevated SARS-CoV-2 seropositivity, affecting older populations the most. Our results suggest that Omdurman, one of the largest population centers in Africa, was severely affected by the COVID-19 pandemic and that excess mortality rates were much higher than reported COVID-19 deaths.

### Acknowledgments

We thank all people participating in the survey, the survey surveyors for their hard work in the field, the laboratory technicians from the National Public Health Laboratory for the ELISA analysis, the team of the Innovation, Development and Research Directorate of the State Ministry of Health for their support, and Tania Kapoor for

editorial support. We thank the National Public Health Laboratory, Sudan, for donating 5,000 rapid tests for the survey with kind permission from the Africa Centre for Disease Control

Medécins Sans Frontières–Switzerland (MSF–CH) funded the study, except for the tests donated by Africa CDC through the National Public Health Laboratory.

W.M., A.S.A., I.C., A.G., C.M., and M.A. had a role in the survey design, survey execution, data collection, data analysis, data interpretation, and writing of the report. W.M., M.A.H.F., M.T.E., and M.A. had full access to all data in the survey and had final responsibility for the decision to submit for publication.

The minimal data set underlying the findings of this paper are available on request, in accordance with the legal framework set forth by Médecins Sans Frontières data sharing policy (<https://www.ncbi.nlm.nih.gov/pmc/articles/PMC3858219/pdf/pmed.1001562.pdf>). To request the data, email [data.sharing@msf.org](mailto:data.sharing@msf.org).

### About the Author

Dr. Moser is an epidemiologist with Médecins Sans Frontières, Geneva, Switzerland. His research interest includes the epidemiology of infectious and neglected tropical diseases.

### References

1. Mukhtar MM, Khogali M. The accelerating COVID-19 epidemic in Sudan. *Nat Immunol*. 2021;22:797–8. <https://doi.org/10.1038/s41590-021-00950-0>
2. TEPHINET. Sudan FETP conducts targeted testing for COVID-19 in Khartoum state. 2020 [cited 2021 Feb 2]. <https://www.tephinet.org/sudan-fetp-conducts-targeted-testing-for-covid-19-in-khartoum-state>
3. Musa HH, Musa TH, Musa IH, Musa IH, Ranciaro A, Campbell MC. Addressing Africa's pandemic puzzle: Perspectives on COVID-19 transmission and mortality in sub-Saharan Africa. *Int J Infect Dis*. 2021;102:483–8. <https://doi.org/10.1016/j.ijid.2020.09.1456>
4. Lawal Y. Africa's low COVID-19 mortality rate: A paradox? *Int J Infect Dis*. 2021;102:118–22. <https://doi.org/10.1016/j.ijid.2020.10.038>
5. Oladipo EK, Ajayi AF, Odeyemi AN, Akindiya OE, Adebayo ET, Oguntomi AS, et al. Laboratory diagnosis of COVID-19 in Africa: availability, challenges and implications. *Drug Discov Ther*. 2020;14:153–60. <https://doi.org/10.5582/ddt.2020.03067>
6. Imperial College London. Report 39—characterizing COVID-19 epidemic dynamics and mortality under-ascertainment in Khartoum, Sudan. 2021 [cited 2021 Feb 2]. <http://www.imperial.ac.uk/medicine/departments/school-public-health/infectious-disease-epidemiology/mrc-global-infectious-disease-analysis/covid-19/report-39-sudan>
7. Higgins RL, Rawlings SA, Case J, Lee FY, Chan CW, Barrick B, et al. Longitudinal SARS-CoV-2 antibody study

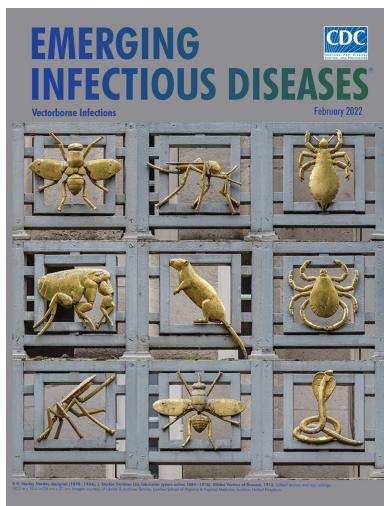
- using the Easy Check COVID-19 IgM/IgG™ lateral flow assay. *PLoS One*. 2021;16:e0247797. <https://doi.org/10.1371/journal.pone.0247797>
8. Pavlova IP, Nair SS, Kyprianou N, Tewari AK. The rapid coronavirus antibody test: can we improve accuracy? *Front Med (Lausanne)*. 2020;7:569. <https://doi.org/10.3389/fmed.2020.00569>
  9. Wang H, Yuan Y, Xiao M, Chen L, Zhao Y, Haiwei Zhang, et al. Dynamics of the SARS-CoV-2 antibody response up to 10 months after infection. *Cell Mol Immunol*. 2021;18:1832–4. <https://doi.org/10.1038/s41423-021-00708-6>
  10. Chia WN, Zhu F, Ong SWX, Young BE, Fong S-W, Le Bert N, et al. Dynamics of SARS-CoV-2 neutralising antibody responses and duration of immunity: a longitudinal study. *Lancet Microbe*. 2021;2:e240–9. [https://doi.org/10.1016/S2666-5247\(21\)00025-2](https://doi.org/10.1016/S2666-5247(21)00025-2)
  11. Uwamino Y, Wakui M, Aoki W, Kurafuji T, Yanagita E, Morita M, et al.; Keio Donner Project Team. Evaluation of the usability of various rapid antibody tests in the diagnostic application for COVID-19. *Ann Clin Biochem*. 2021;58:174–80. <https://doi.org/10.1177/0004563220984827>
  12. Wiens KE, Mawien PN, Rumunu J, Slater D, Jones FK, Moheed S, et al. Seroprevalence of severe acute respiratory syndrome coronavirus 2 IgG in Juba, South Sudan, 2020. *Emerg Infect Dis*. 2021;27:1598–606. <https://doi.org/10.3201/eid2706.210568>
  13. Bhuiyan TR, Hulse JD, Hegde ST, Akhtar M, Islam T, Khan ZH, et al. SARS-CoV-2 seroprevalence before Delta variant surge, Chattogram, Bangladesh, March–June 2021. *Emerg Infect Dis*. 2022;28:429–31. <https://doi.org/10.3201/eid2802.211689>
  14. World Health Organization. Health emergency dashboard: Sudan.2022 [cited 2022 Jan 19]. <https://covid19.who.int/region/emro/country/sd>

Address for correspondence: Manuel Albela Miranda, Médecins Sans Frontières, Rue de Lausanne 78, 1202 Geneva, Switzerland; email: [manuel.albela@geneva.msf.org](mailto:manuel.albela@geneva.msf.org)

February 2022

## Vectorborne Infections

- Viral Interference between Respiratory Viruses
- Novel Clinical Monitoring Approaches for Reemergence of Diphtheria Myocarditis, Vietnam
- Clinical and Laboratory Characteristics and Outcome of Illness Caused by Tick-Borne Encephalitis Virus without Central Nervous System Involvement
- Role of *Anopheles* Mosquitoes in Cache Valley Virus Lineage Displacement, New York, USA
- Invasive *Burkholderia cepacia* Complex Infections among Persons Who Inject Drugs, Hong Kong, China, 2016–2019
- Comparative Effectiveness of Coronavirus Vaccine in Preventing Breakthrough Infections among Vaccinated Persons Infected with Delta and Alpha Variants
- Effectiveness of mRNA BNT162b2 Vaccine 6 Months after Vaccination among Patients in Large Health Maintenance Organization, Israel
- Comparison of Complications after Coronavirus Disease and Seasonal Influenza, South Korea
- Epidemiology of Hospitalized Patients with Babesiosis, United States, 2010–2016
- Rapid Spread of Severe Fever with Thrombocytopenia Syndrome Virus by Parthenogenetic Asian Longhorned Ticks
- Wild Boars as Reservoir of Highly Virulent Clone of Hybrid Shiga Toxigenic and Enterotoxigenic *Escherichia coli* Responsible for Edema Disease, France



- Public Acceptance of and Willingness to Pay for Mosquito Control, Texas, USA
- Widespread Detection of Multiple Strains of Crimean-Congo Hemorrhagic Fever Virus in Ticks, Spain
- Tonate Virus and Fetal Abnormalities, French Guiana, 2019
- West Nile Virus Transmission by Solid Organ Transplantation and Considerations for Organ Donor Screening Practices, United States
- SARS-CoV-2 Circulation, Guinea, March 2020–July 2021

- Serial Interval and Transmission Dynamics during SARS-CoV-2 Delta Variant Predominance, South Korea
- Postvaccination Multisystem Inflammatory Syndrome in Adult with No Evidence of Prior SARS-CoV-2 Infection
- Postmortem Surveillance for Ebola Virus Using OraQuick Ebola Rapid Diagnostic Tests, Eastern Democratic Republic of the Congo, 2019–2020
- SARS-CoV-2 Seroprevalence before Delta Variant Surge, Chattogram, Bangladesh, March–June 2021
- SARS-CoV-2 B.1.619 and B.1.620 Lineages, South Korea, 2021
- *Neisseria gonorrhoeae* FC428 Subclone, Vietnam, 2019–2020
- Zoonotic Infection with Oz Virus, a Novel Thogotovirus
- SARS-CoV-2 Cross-Reactivity in Prepandemic Serum from Rural Malaria-Infected Persons, Cambodia
- *Babesia crassa*-Like Human Infection Indicating Need for Adapted PCR Diagnosis of Babesiosis, France
- Clinical Features and Neurodevelopmental Outcomes for Infants with Perinatal Vertical Transmission of Zika Virus, Colombia
- Probable Transmission of SARS-CoV-2 Omicron Variant in Quarantine Hotel, Hong Kong, China, November 2021
- Seroprevalence of SARS-CoV-2 Antibodies in Adults, Arkhangelsk, Russia

**EMERGING  
INFECTIOUS DISEASES**

To revisit the February 2022 issue, go to:

<https://wwwnc.cdc.gov/eid/articles/issue/28/2/table-of-contents>

# SARS-CoV-2 Antibody Prevalence and Population-Based Death Rates, Greater Omdurman, Sudan

## Appendix

### Methodology

#### Study Area and Design

Sudan's capital Khartoum is a tripartite metropolis comprising Khartoum, Bahri and Omdurman with a total of 8 million inhabitants (1), located at the confluence of the White and Blue Nile. Omdurman, the largest among the three cities was chosen as study site, which included 2 surveys: i) a retrospective mortality survey using a 2-stage cluster sampling methodology based on random geopoints and ii) a nested SARS-CoV-2 antibody prevalence survey. For the mortality survey the recall period was divided into 2 periods: the pre-pandemic (January 1, 2019–February 29, 2020) and the pandemic (March 1, 2020–day of the survey) periods.

The primary objective of the survey was to estimate death rate for persons  $\geq 50$  years and the overall seroprevalence of SARS-CoV-2 antibodies in Omdurman. The secondary objectives included age group-specific (<5, 5–19, 20–34, 35–49,  $\geq 50$  years) seroprevalences, risk factors for seropositivity, health seeking behavior, and access to healthcare among the people living in greater Omdurman. Additionally, the sensitivity and specificity of the rapid serologic test (RDT) was compared to that of the enzyme-linked immunosorbent assay (ELISA).

#### Procedures

The Ministry of Planning provided a point file containing each middle point of polygons representing a residential parcel, which was considered as a household for this survey. Proportional to the total number of parcels in the 34 administrative units in greater Omdurman (Appendix Figure 1), 140 points were randomly chosen using the random generator software of ArcGIS version 10.5 (<https://www.arcgis.com>), identifying the first household of a cluster with a

total of 30 households. The remaining 29 households were chosen in closest proximity to the first household. All households were included in the mortality survey, whereas the seroprevalence survey included 4 randomly selected households per cluster, of which all family members without any age restriction were invited to participate. Participants were excluded if they were absent after 3 attempted visits. Additionally, dried blood spots (DBS) were collected from 2 out of the 4 households participating in the seroprevalence survey. Previously trained medical doctors forming the survey team carried out the RDT and DBS collection.

For the mortality survey, a questionnaire was administered to the head of each household, adapted from recent World Health Organization recommendations for identifying mortality from COVID-19 (2). Information gathered included demographics of all household members, details on deceased household members, comorbidities, COVID-19 testing, and health seeking behavior (Appendix Tables 1–6). For the seroprevalence survey, each participant was asked individually about past symptoms related to COVID-19, ongoing treatment, exposure to a suspect or confirmed COVID-19 case, and other risk factors (Appendix Tables 7–11).

### **Sample Size Calculation**

The sample size calculations were performed using ENA 2020 software (<https://smartmethodology.org>). The sample size for the mortality survey was based on deaths of persons  $\geq 50$  years of age (0.73 deaths/10,000 persons/day) (3), with a precision of  $\pm 0.2$ , a design effect of 1.2, and a household size of 6 persons, resulting in a required 3,637 households. For the seroprevalence survey, a SARS-CoV-2 antibody prevalence of 34% in the population was assumed based on the preliminary results from a study in Khartoum (4). To allow for age stratification, the sample size was based on the smallest age group ( $\geq 50$  years), representing  $\approx 11.5\%$  of the population (4). To obtain a precision of  $\pm 5\%$ , a 5% type 1 error, and 5% inconclusive results,  $\geq 363$  persons per age–group were required.

To assess the diagnostic performance of the RDT, a total of 745 samples were required for analysis by ELISA (5,6). Specifically, 191 positive and 554 negative samples were needed to confirm the sensitivity (97.0%, precision  $\pm 2.5\%$ ) and specificity (96.2%, precision  $\pm 1.7\%$ ) according to manufacturer.

## **Ethics**

Ethical approval was obtained from the National Health Review Ethics Committee (No. 3–1–21), Médecins Sans Frontières Ethics Review Board (ID 2089c) and Khartoum State Ministry of Health. In addition, the 3 localities of greater Omdurman (Omdurman, Umbedda, and Kereri) were informed and authorization received before seeking authorization from the administrative units within the localities. Before beginning field data collection, we visited the leader of the resistance committee for each block to obtain verbal consent. For the mortality survey, we obtained verbal consent from the head of the household. For the seroprevalence survey, we obtained written informed consent from adults; for participants <18 years of age, we first obtained written informed consent from parents or legal guardians and then oral assent from the participants themselves.

## **Diagnostics**

For practical reasons and to minimize refusals, we used the least invasive method with capillary blood collection for rapid serologic testing (STANDARD Q COVID-19 IgM/IgG Combo, <https://sdbiosensor.com>). Indeed, within the team we discussed intensively about whether we should be reporting the estimated infection fatality rate using the results from the survey. In the end we decided not to do it because we did not have reliable mortality data for Omdurman outside of the survey; also, we could not be sure of the cause of death for the excess mortality estimated (Appendix Table 1). The general agreement was that including this estimation could have been misleading. The IFR projected for Africa range was from 0.004% in Botswana and Central African Republic to 0.67% in South Africa (1) or 1.53% in Nigeria (2). All participants either positive for IgM, positive for IgG or positive for IgM and IgG, based on the RDT were considered positive for SARS-CoV-2 antibodies. According to the manufacturer, the RDT has a sensitivity of 96.9% (95% CI 91.3–99.4) and specificity of 96.2% (93.2–98.2). The DBS cards were transferred to the National Public Health Laboratory in Khartoum for further analysis by ELISA (EUROIMMUN Anti-SARS-CoV-2 ELISA [IgG, S1 domain], Lot: E210118BQ; <https://www.euroimmun.com>) following standard operating procedures. According to the manufacturer, the ELISA assay has a sensitivity of 94.4% and a specificity of 99.6% for detecting previous SARS-CoV-2 antibodies.



## Statistical Analysis

We analyzed the data using R (<https://www.r-project.org>) and Stata version 15 (StataCorp, <https://www.stata.com>). For the crude death rates (expressed as deaths/10,000 persons/day) a design effect was assumed to weight the differences among clusters (Appendix Tables 1–3). To compare death rates between the prepandemic and pandemic periods, the rate ratio was calculated based on a 2–sided exact rate ratio test, and Fisher’s exact test was applied to proportions where appropriate. For having the most accurate estimation of the seroprevalence based on the tests used in this survey, we defined 2 different approaches. First, published performance estimates for the RDT were used for a meta-analysis with random effects model (adjustment 1). The model provided a corrected estimate of the sensitivity and specificity for adjusting the crude seroprevalence. Considering the lack of a standard test for detecting SARS-CoV-2 antibodies, the waning of antibodies, and the fixed threshold for their detection by RDT (7,8), a second adjustment (adjustment 2) was done. The survey’s ELISA results were combined with the performance estimation from the previously defined random effects model for both the ELISA and RDT and used as inputs for a Bayesian latent-class model (BLCM) (9–11), resulting in a RDT performance estimation used as adjustment. For calculating the  $\beta$  distributions of the priors for the BLCM, the BetaBuster software (12) was used. When comparing the results of the RDT with ELISA only the positive for IgG or IgG/IgM were considered positive. Risk factors associated with a positive RDT were assessed with a logistic regression model. To estimate excess deaths, SARS-CoV-2 infections, and infection fatality rate, the survey results were extrapolated as our population estimation and average household size multiplied by the number of households provided by the Ministry of Planning.

## Adjustment Description, Code and Outputs

### Adjustment 1 – Meta-Analysis with Random Effects Model

For adjustment 1, we estimated sensitivity and specificity of the tests using a univariate random effects model following the methods described by Shim et al. (13) The idea behind this model is to account for the existing performance data for the tests to improve the estimation of the results. For the model, we conducted a meta-analysis of the existing published performance data for each of the tests (RDT and ELISA) using the Metaprop function from the R package Meta. For the sensitivity and specificity estimation of the RDT we gathered data from 7 studies.

Overall, 6 studies derived from the FIND (the Global Alliance for Diagnostics) database (14) and data were filtered by assay name (Standard Q COVID-19 IgM/IgG Combo Test), target (IgG/IgM), and all periods. The last study was from the US Food and Drug Administration (FDA) independent evaluations of COVID-19 serologic tests (15). For the ELISA analysis, we used 4 studies: 2 independent (16,17), 1 from the US FDA (18), and 1 from the FIND database (19). For the RDT, the resulting sensitivity was 76.6% (95% CI 67.8–83.6) and specificity 99.0% (95% CI 98.3–99.4), and for ELISA, sensitivity was 76.9% (95% CI 61.1–87.6) and specificity 99.1% (97.7–99.7). To estimate the adjusted seroprevalence we used the `epi.prev` function from the R package `EpiR` with the estimated specificity and sensitivity of the RDT obtained from the meta-analysis.

### **Adjustment 2 – Bayesian Latent-Class Model**

We used adjustment 2 to account for the lack of a standard for the detection of SARS-CoV-2 antibodies and the use of imperfect tests. For this purposes we used a BLCM based on the Hui-Walter paradigm, which has been widely documented (20–22) as a valuable tool to estimate the performance of diagnostic tests in scenarios similar to the ones in this survey. To develop this model we used the `runjags` R package (23) and the data of the participants with ELISA and RDT test results. We divided the data into 5 groups by participant age. We used `BetaBuster` (24) software to calculate the  $\beta$  distributions of the sensitivity and specificity resulted from the previous meta-analysis. This information resulted in the following prior  $\beta$  functions and used as parameters for the BLCM: RDT sensitivity `dbeta(61.22,19.40)`, specificity `dbeta(965.86, 10.74)`; ELISA sensitivity `dbeta(21.77, 7.24)`, specificity `dbeta(332.21, 4.01)`. On the basis of this model we estimated a RDT sensitivity and specificity of 61.9% (56.8–66.9) and 98.9% (98.2–99.5). To estimate the adjusted seroprevalence we used the `epi.prev` function with the dataset of all the participants in the serology part of the survey and the estimated specificity and sensitivity of the RDT from the BLCM.

### RDT

```
## Studies 1-6 <- https://www.finddx.org/sarscov2-eval-antibody/
## Study 7 <- https://open.fda.gov/apis/device/covid19serology/
https://www.accessdata.fda.gov/cdrh\_docs/presentations/maf/maf3274-a001.pdf
S1sens <- 0.667
S1spec <- 1
S1pos <- 96
S1neg <- 102
```

```
TP1 <- round(S1sens*S1pos)
TN1 <- round(S1spec*S1neg)
FN1 <- S1pos-TP1
FP1 <- S1neg-TN1
S2sens <- 0.719
S2spec <- 0.991
S2pos <- 166
S2neg <- 196
TP2 <- round(S2sens*S2pos)
TN2 <- round(S2spec*S2neg)
FN2 <- S2pos-TP2
FP2 <- S2neg-TN2
S3sens <- 0.577
S3spec <- 0.976
S3pos <- 317
S3neg <- 125
TP3 <- round(S3sens*S3pos)
TN3 <- round(S3spec*S3neg)
FN3 <- S3pos-TP3
FP3 <- S3neg-TN3
S4sens <- 0.820
S4spec <- 0.990
S4pos <- 579
S4neg <- 423
TP4 <- round(S4sens*S4pos)
TN4 <- round(S4spec*S4neg)
FN4 <- S4pos-TP4
FP4 <- S4neg-TN4
S5sens <- 0.807
S5spec <- 0.996
S5pos <- 262
S5neg <- 298
TP5 <- round(S5sens*S5pos)
TN5 <- round(S5spec*S5neg)
FN5 <- S5pos-TP5
FP5 <- S5neg-TN5
S6sens <- 0.897
S6spec <- 0.984
S6pos <- 483
S6neg <- 321
TP6 <- round(S6sens*S6pos)
TN6 <- round(S6spec*S6neg)
FN6 <- S6pos-TP6
FP6 <- S6neg-TN6
S7sens <- 0.763
S7spec <- 0.988
```

```

S7pos <- 30
S7neg <- 80
TP7 <- round(S7sens*S7pos)
TN7 <- round(S7spec*S7neg)
FN7 <- S7pos-TP7
FP7 <- S7neg-TN7
AuditC5 <- data.frame(TP = c(TP1, TP2, TP3, TP4, TP5, TP6, TP7),
FN = c(FN1, FN2, FN3, FN4, FN5, FN6, FN7),
FP = c(FP1, FP2, FP3, FP4, FP5, FP6, FP7),
TN = c(TN1, TN2, TN3, TN4, TN5, TN6, TN7))
AuditC5$names <- c("Study 1", "Study 2", "Study 3", "Study 4", "Study 5", "Study 6", "Study
7")
sens_logit_rdt <- metaprop(AuditC5$TP, AuditC5$TP + AuditC5$FN, comb.fixed=F,
comb.random=T, sm="PLOGIT", method = "GLMM", method.ci="CP",
studlab=AuditC5$names)
spec_logit_rdt <- metaprop(AuditC5$TN, AuditC5$TN + AuditC5$FP, comb.fixed=FALSE,
comb.random=TRUE, sm="PLOGIT", method.ci="CP", studlab=AuditC5$names)

```

### Outputs (Appendix Figures 1, 2)

```

##Estimation of the adjusted seroprevalence with a given sensitivity and specificity of a test
adj_serop_overall <- epi.prev(nrow(sero[test_result_cat=="Positive", ]),
nrow(sero[!is.na(test_result_cat) & outcome == "done", ]),
se = 0.766, sp = 0.990)
adj_serop_o50 <- epi.prev(nrow(sero[age_group == "[50,Inf]" & test_result_cat=="Positive", ]),
nrow(sero[age_group == "[50,Inf]" & !is.na(test_result_cat) & outcome == "done", ]),
se = 0.766, sp = 0.990)
adj_serop_35_50 <- epi.prev(nrow(sero[age_group == "[35,50]" & test_result_cat=="Positive",
]),
nrow(sero[age_group == "[35,50]" & !is.na(test_result_cat) & outcome == "done", ]),
se = 0.766, sp = 0.990)
adj_serop_20_35 <- epi.prev(nrow(sero[age_group == "[20,35]" & test_result_cat=="Positive",
]),
nrow(sero[age_group == "[20,35]" & !is.na(test_result_cat) & outcome == "done", ]),
se = 0.766, sp = 0.990)
adj_serop_5_20 <- epi.prev(nrow(sero[age_group == "[5,20]" & test_result_cat=="Positive", ]),
nrow(sero[age_group == "[5,20]" & !is.na(test_result_cat) & outcome == "done", ]),
se = 0.766, sp = 0.990)
adj_serop_0_5 <- epi.prev(nrow(sero[age_group == "[0,5]" & test_result_cat=="Positive", ]),
nrow(sero[age_group == "[0,5]" & !is.na(test_result_cat) & outcome == "done", ]),
se = 0.766, sp = 0.990)

```

### **ELISA**

```

## Calculating the sens and spec of the ELISA test through a meta-analysis
## Study 1 <- Kr?ttgen A, Cornelissen CG, Dreher M, Hornef M, Im?hl M, Kleines M.
Comparison of four new commercial serologic assays for determination of SARS-CoV-2 IgG. J
Clin Virol. 2020;128:104394. doi:10.1016/j.jcv.2020.104394

```

```

## Study 2 <- https://open.fda.gov/apis/device/covid19serology/
https://www.accessdata.fda.gov/cdrh_docs/presentations/maf/maf3246-a001.pdf
## Study 3 <- Kohmer N, Westhaus S, Rühl C, Ciesek S, Rabenau HF. Brief clinical evaluation
of six high-throughput SARS-CoV-2 IgG antibody assays. J Clin Virol. 2020;129:104480.
doi:10.1016/j.jcv.2020.104480
## Study 4 <- https://www.finddx.org/sarscov2-eval-antibody/
S1sens_el <- 0.864
S1spec_el <- 0.962
S1pos_el <- 22
S1neg_el <- 53
TP1 <- round(S1sens_el*S1pos_el)
TN1 <- round(S1spec_el*S1neg_el)
FN1 <- S1pos_el-TP1
FP1 <- S1neg_el-TN1
S2sens_el <- 0.900
S2spec_el <- 1
S2pos_el <- 30
S2neg_el <- 80
TP2 <- round(S2sens_el*S2pos_el)
TN2 <- round(S2spec_el*S2neg_el)
FN2 <- S2pos_el-TP2
FP2 <- S2neg_el-TN2
S3sens_el <- 0.711
S3spec_el <- 1
S3pos_el <- 45
S3neg_el <- 22
TP3 <- round(S3sens_el*S3pos_el)
TN3 <- round(S3spec_el*S3neg_el)
FN3 <- S3pos_el-TP3
FP3 <- S3neg_el-TN3
S4sens_el <- 0.600
S4spec_el <- 0.99
TP4 <- 55
TN4 <- 294
FN4 <- 37
FP4 <- 2
AuditC5_el <- data.frame(TP = c(TP1, TP2, TP3, TP4),
FN = c(FN1, FN2, FN3, FN4),
FP = c(FP1, FP2, FP3, FP4),
TN = c(TN1, TN2, TN3, TN4))
AuditC5_el$names <- c("Study 1", "Study2", "Study 3", "Study 4")
sens_logit_el <- metaprop(AuditC5_el$TP, AuditC5_el$TP + AuditC5_el$FN, comb.fixed=F,
comb.random=T, sm="PLOGIT", method = "GLMM", method.ci="CP",
studlab=AuditC5_el$names)

```

```
spec_logit_el <- metaprop(AuditC5_el$TN, AuditC5_el$TN + AuditC5_el$FP,
comb.fixed=FALSE, comb.random=TRUE, sm="PLOGIT", method.ci="CP",
studlab=AuditC5_el$names)
```

Outputs (Appendix Figures 3, 4)

## Adjustment 2 – R Code

BLCM model definition:

```
model{
## Observation layer:
# Complete observations (N=825):
for(p in 1:Populations){
Tally_RR[1:4,p] ~ dmulti(prob_RR[1:4,p], N_RR[p])
prob_RR[1:4,p] <- se_prob[1:4,p] + sp_prob[1:4,p]
}
## Observation probabilities:
for(p in 1:Populations){
# Probability of observing RDT- ELISA- from a true positive::
se_prob[1,p] <- prev[p] * ((1-se[1])*(1-se[2]) +covse12)
# Probability of observing RDT- ELISA- from a true negative::
sp_prob[1,p] <- (1-prev[p]) * (sp[1]*sp[2] +covsp12)
# Probability of observing RDT+ ELISA- from a true positive::
se_prob[2,p] <- prev[p] * (se[1]*(1-se[2]) -covse12)
# Probability of observing RDT+ ELISA- from a true negative::
sp_prob[2,p] <- (1-prev[p]) * ((1-sp[1])*sp[2] -covsp12)
# Probability of observing RDT- ELISA+ from a true positive::
se_prob[3,p] <- prev[p] * ((1-se[1])*se[2] -covse12)
# Probability of observing RDT- ELISA+ from a true negative::
sp_prob[3,p] <- (1-prev[p]) * (sp[1]*(1-sp[2]) -covsp12)
# Probability of observing RDT+ ELISA+ from a true positive::
se_prob[4,p] <- prev[p] * (se[1]*se[2] +covse12)
# Probability of observing RDT+ ELISA+ from a true negative::
sp_prob[4,p] <- (1-prev[p]) * ((1-sp[1])*(1-sp[2]) +covsp12)
}
## Priors:
# Prevalence in population [0,5):
prev[1] ~ dbeta (1,1)
# Prevalence in population [5,20):
prev[2] ~ dbeta (1,1)
# Prevalence in population [20,35):
prev[3] ~ dbeta (1,1)
# Prevalence in population [35,50):
prev[4] ~ dbeta (1,1)
# Prevalence in population [50,Inf):
prev[5] ~ dbeta (1,1)
# Sensitivity of RDT test:
se[1] ~ dbeta(61.22,19.40)T(1-sp[1], )
```

```

# Specificity of RDT test:
sp[1] ~ dbeta(965.86, 10.74)
# Sensitivity of ELISA test:
se[2] ~ dbeta(21.77, 7.24)T(1-sp[2], )
# Specificity of ELISA test:
sp[2] ~ dbeta(332.21, 4.01)
# Covariance in sensitivity between RDT and ELISA tests:
# covse12 ~ dunif( (se[1]-1)*(1-se[2]) , min(se[1],se[2]) - se[1]*se[2] ) ## if the sensitivity of
these tests may be correlated
covse12 <- 0 ## if the sensitivity of these tests can be assumed to be independent
# Covariance in specificity between RDT and ELISA tests:
# covsp12 ~ dunif( (sp[1]-1)*(1-sp[2]) , min(sp[1],sp[2]) - sp[1]*sp[2] ) ## if the specificity of
these tests may be correlated
covsp12 <- 0 ## if the specificity of these tests can be assumed to be independent
}
#monitor# se, sp, prev, covse12, covsp12
## Inits:
inits{
"se" <- c(0.5, 0.99)
"sp" <- c(0.99, 0.75)
"prev" <- c(0.05, 0.95, 0.05, 0.95, 0.05)
# "covse12" <- 0
# "covsp12" <- 0
}
inits{
"se" <- c(0.99, 0.5)
"sp" <- c(0.75, 0.99)
"prev" <- c(0.95, 0.05, 0.95, 0.05, 0.95)
# "covse12" <- 0
# "covsp12" <- 0
}
## Data:
data{
"Populations" <- 5
"N_RR" <- c(60, 312, 214, 136, 103)
"Tally_RR" <- structure(c(44, 1, 9, 6, 161, 25, 56, 70, 126, 16, 36, 36, 68, 10, 24, 34, 44, 8, 13,
38), .Dim = c(4,5))
}
##Model call
# Set different starting values for the three different chains to assess convergence
inits1 = list(".RNG.name" = "base::Mersenne-Twister",
".RNG.seed" = 100022)
inits2 = list(".RNG.name" = "base::Mersenne-Twister",
".RNG.seed" = 300022)
inits3 = list(".RNG.name" = "base::Mersenne-Twister",
".RNG.seed" = 500022)

```

```

run.jags("./autohw.bug",
inits=list(inits1, inits2, inits3),
n.chains = 3,
burnin = 10000,
sample = 100000,
adapt = 1000,
)
## Calculating the adjusted seroprevalence
adj_bay_serop_overall <- epi.prev(nrow(sero[test_result_cat=="Positive", ]), method = "c-p",
nrow(sero[!is.na(test_result_cat) & outcome == "done", ]),
se=0.619, sp=0.989)
adj_bay_serop_o50 <- epi.prev(nrow(sero[age_group == "[50,Inf)" &
test_result_cat=="Positive", ]),
nrow(sero[age_group == "[50,Inf)" & !is.na(test_result_cat) & outcome == "done", ]),
0.619, 0.989)
adj_bay_serop_35_50 <- epi.prev(nrow(sero[age_group == "[35,50)" &
test_result_cat=="Positive", ]),
nrow(sero[age_group == "[35,50)" & !is.na(test_result_cat) & outcome == "done", ]),
0.619, 0.989)
adj_bay_serop_20_35 <- epi.prev(nrow(sero[age_group == "[20,35)" &
test_result_cat=="Positive", ]),
nrow(sero[age_group == "[20,35)" & !is.na(test_result_cat) & outcome == "done", ]),
0.619, 0.989)
adj_bay_serop_5_20 <- epi.prev(nrow(sero[age_group == "[5,20)" &
test_result_cat=="Positive", ]),
nrow(sero[age_group == "[5,20)" & !is.na(test_result_cat) & outcome == "done", ]),
0.619, 0.989)
adj_bay_serop_0_5 <- epi.prev(nrow(sero[age_group == "[0,5)" & test_result_cat=="Positive",
]),
nrow(sero[age_group == "[0,5)" & !is.na(test_result_cat) & outcome == "done", ]),
0.619, 0.989)

```

### **BLCM Output**

```

JAGS model summary statistics from 300000 samples (chains = 3; adapt+burnin = 11000):
Lower95 Median Upper95 Mean SD Mode MCerr MC%ofSD SSeff
se[1] 0.5682 0.61911 0.66909 0.61905 0.025775 -- 0.00015081 0.6 29209
sp[1] 0.98247 0.9894 0.99494 0.98908 0.0032768 -- 0.000018919 0.6 30000
se[2] 0.72266 0.77446 0.82388 0.77415 0.025912 -- 0.0001496 0.6 30000
sp[2] 0.9697 0.98578 0.99721 0.98457 0.0075763 -- 0.000043742 0.6 30000
AC.10 psrf
se[1] 0.0020527 0.99999
sp[1] -0.000081098 1.0001
se[2] 0.00016124 1.0002
sp[2] 0.00051855 1.0001

```



Examples of output are provided for the estimation of RDT sensitivity (Appendix Figures 5–8); estimation of RDT specificity (Appendix Figures 9–12); ELISA sensitivity (Appendix Figures 13–16), and ELISA specificity (Appendix Figures 17–20).

## **Discussion of Mortality Data**

In the mortality survey we have tried to set a start of the recall period that would be easy to remember for the head of the households who would be the ones reporting about the deaths in their households. From previous experiences in mortality surveys, using special events or dates makes it easier for the respondents to provide more accurate information. Given that in the local calendar there was no other special event in January and February, we considered having January 1, 2019 as the starting date for the recall period. We acknowledge that there are some limitations with this approach and that recall bias could also affect the death rates specially for the pre-pandemic period, but we tried to tackle this through the training of the surveyors and the supervisors in the survey. For the selection of the starting of the pandemic period, and given the limited testing capacity available in country at the time, we considered that the virus was circulating earlier than March 13, the date of the first officially reported case, so we chose to select the start of month of March 2020 for the beginning of the Pandemic period. In regards of visual household-reported death excess starting in March 2020 (Figure), what we thought is that the first month of the pandemic the deaths were even more underreported (probably because of testing capacity and the delay on setting up the surveillance system for monitoring cases and deaths related to COVID-19). We suspect the virus was circulating and infecting humans before the first case was reported, which could explain the excess deaths in March 2020.

Finally, we considered determining an estimation of the infection fatality rate (IFR) using the results from the survey. Because we did not have reliable mortality data for Omdurman outside of the survey and could not be sure of the cause of death for the excess deaths estimated, we agreed that including this estimation could have been misleading. The IFR projected for Africa ranged between 0.004% in Botswana and Central African Republic to 0.67% in South Africa or 1.53% in Nigeria (25,26).

## References

1. Report 39 - Characterising COVID-19 epidemic dynamics and mortality under-ascertainment in Khartoum, Sudan. Imperial College London. 2021 [cited 2021 Feb 2].  
<http://www.imperial.ac.uk/medicine/departments/school-public-health/infectious-disease-epidemiology/mrc-global-infectious-disease-analysis/covid-19/report-39-sudan/>
2. World Health Organization. Population-based age-stratified seroepidemiological investigation protocol for coronavirus 2019 (COVID-19) infection. 2020 [cited 2021 Feb 2].  
<https://www.who.int/publications-detail-redirect/WHO-2019-nCoV-Seroepidemiology-2020.2>
3. World population prospects - population division - United Nations. 2021 [cited 2021 Feb 2].  
<https://population.un.org/wpp/>
4. Sudan FETP conducts targeted testing for COVID-19 in Khartoum State | TEPHINET. 2020 [cited 2021 Feb 2]. <https://www.tephinet.org/sudan-fetp-conducts-targeted-testing-for-covid-19-in-khartoum-state>
5. Kwenti TE, Njunda LA, Tsamul B, Nsagha SD, Assob NJ, Tufon KA, et al. Comparative evaluation of a rapid diagnostic test, an antibody ELISA, and a pLDH ELISA in detecting asymptomatic malaria parasitaemia in blood donors in Buea, Cameroon. *Infect Dis Poverty*. 2017;6:103.  
[PubMed https://doi.org/10.1186/s40249-017-0314-2](https://doi.org/10.1186/s40249-017-0314-2)
6. Hajian-Tilaki K. Sample size estimation in diagnostic test studies of biomedical informatics. *J Biomed Inform*. 2014;48:193–204. [PubMed https://doi.org/10.1016/j.jbi.2014.02.013](https://doi.org/10.1016/j.jbi.2014.02.013)
7. Higgins RL, Rawlings SA, Case J, Lee FY, Chan CW, Barrick B, et al. Longitudinal SARS-CoV-2 antibody study using the Easy Check COVID-19 IgM/IgG™ lateral flow assay. *PLoS One*. 2021;16:e0247797. [PubMed https://doi.org/10.1371/journal.pone.0247797](https://doi.org/10.1371/journal.pone.0247797)
8. Pavlova IP, Nair SS, Kyprianou N, Tewari AK. The rapid coronavirus antibody test: can we improve accuracy? *Front Med (Lausanne)*. 2020;7:569. [PubMed https://doi.org/10.3389/fmed.2020.00569](https://doi.org/10.3389/fmed.2020.00569)
9. Cheung A, Dufour S, Jones G, Kostoulas P, Stevenson MA, Singanallur NB, et al. Bayesian latent class analysis when the reference test is imperfect. *Rev Sci Tech*. 2021;40:271–86. [PubMed https://doi.org/10.20506/rst.40.1.3224](https://doi.org/10.20506/rst.40.1.3224)
10. Hartnack S, Eusebi P, Kostoulas P. Bayesian latent class models to estimate diagnostic test accuracies of COVID-19 tests. *J Med Virol*. 2021;93:639–40. [PubMed https://doi.org/10.1002/jmv.26405](https://doi.org/10.1002/jmv.26405)

11. Wang C, Lin X, Nelson KP. Bayesian hierarchical latent class models for estimating diagnostic accuracy. *Stat Methods Med Res.* 2020;29:1112–28. [PubMed](#)  
<https://doi.org/10.1177/0962280219852649>
12. Drewe JA, Tomlinson AJ, Walker NJ, Delahay RJ. Diagnostic accuracy and optimal use of three tests for tuberculosis in live badgers. *PLoS One.* 2010;5:e11196. [PubMed](#)  
<https://doi.org/10.1371/journal.pone.0011196>
13. Shim SR, Kim S-J, Lee J. Diagnostic test accuracy: application and practice using R software. *Epidemiol Health.* 2019;41:e2019007. [PubMed](#) <https://doi.org/10.4178/epih.e2019007>
14. FIND. (the global alliance for diagnostics). Clinical performance estimates for the 35 RDTs. 2020 [cited 2021 Aug 3]. [https://www.finddx.org/wp-content/uploads/2021/04/COVID-Ab-DxData\\_2021-04-30.xlsx](https://www.finddx.org/wp-content/uploads/2021/04/COVID-Ab-DxData_2021-04-30.xlsx)
15. US Federal Drug Administration. Serology test evaluation report for “STANDARD QCOVID-19 IgM/IgG Duo” from SD BIOSENSOR, Inc. 2020. 2020 [cited 2021 Aug 4].  
[https://www.accessdata.fda.gov/cdrh\\_docs/presentations/maf/maf3274-a001.pdf](https://www.accessdata.fda.gov/cdrh_docs/presentations/maf/maf3274-a001.pdf)
16. Krüttgen A, Cornelissen CG, Dreher M, Hornef M, Imöhl M, Kleines M. Comparison of four new commercial serologic assays for determination of SARS-CoV-2 IgG. *J Clin Virol.* 2020;128:104394. [PubMed](#) <https://doi.org/10.1016/j.jcv.2020.104394>
17. Kohmer N, Westhaus S, Rühl C, Ciesek S, Rabenau HF. Brief clinical evaluation of six high-throughput SARS-CoV-2 IgG antibody assays. *J Clin Virol.* 2020;129:104480. [PubMed](#)  
<https://doi.org/10.1016/j.jcv.2020.104480>
18. US Federal Drug Administration. Serology test evaluation report for “SARS-COV-2 ELISA(IgG)” from Euroimmun. 2020 [cited 2021 Aug 4].  
[https://www.accessdata.fda.gov/cdrh\\_docs/presentations/maf/maf3246-a001.pdf](https://www.accessdata.fda.gov/cdrh_docs/presentations/maf/maf3246-a001.pdf)
19. FIND. (the global alliance for diagnostics). Results for the evaluation of 16 Antibody ELISAs: overall sensitivity and specificity estimates. 2020 [cited 2021 Aug 3]. [https://www.finddx.org/wp-content/uploads/2021/04/forestplot\\_All\\_ELISAS.pdf](https://www.finddx.org/wp-content/uploads/2021/04/forestplot_All_ELISAS.pdf)
20. Hartnack S, Eusebi P, Kostoulas P. Bayesian latent class models to estimate diagnostic test accuracies of COVID-19 tests. *J Med Virol.* 2021;93:639–40. [PubMed](#) <https://doi.org/10.1002/jmv.26405>
21. Cheung A, Dufour S, Jones G, Kostoulas P, Stevenson MA, Singanallur NB, et al. Bayesian latent class analysis when the reference test is imperfect. *Rev Sci Tech.* 2021;40:271–86. [PubMed](#)  
<https://doi.org/10.20506/rst.40.1.3224>

22. Wang C, Lin X, Nelson KP. Bayesian hierarchical latent class models for estimating diagnostic accuracy. *Stat Methods Med Res.* 2020;29:1112–28. [PubMed](https://doi.org/10.1177/0962280219852649)  
<https://doi.org/10.1177/0962280219852649>
23. Denwood MJ. runjags: An R package providing interface utilities, model templates, parallel computing methods and additional distributions for MCMC Models in JAGS. *J Stat Softw.* 2016;71:1–25. <https://doi.org/10.18637/jss.v071.i09>
24. Johnson W, Su C-L. Betabuster. 2020 [cited 2021 Aug 4].  
<https://cadms.vetmed.ucdavis.edu/sites/g/files/dgvnsk5071/files/inline-files/betabuster012006.zip>.
25. Mutevedzi PC, Kawonga M, Kwatra G, Moultrie A, Baillie V, Mabena N, et al. Estimated SARS-CoV-2 infection rate and fatality risk in Gauteng Province, South Africa: a population-based seroepidemiological survey. *Int J Epidemiol.* 2021;dyab217; Epub ahead of print. [PubMed](https://doi.org/10.1093/ije/dyab217)  
<https://doi.org/10.1093/ije/dyab217>
26. Onovo AA, Kalaiwo A, Obanubi C, Odezugo G, Estill J, Keiser O. Estimates of the COVID-19 infection fatality rate for 48 African countries: a model-based analysis. *BioMed.* 2021;1:63–79.  
<https://doi.org/10.3390/biomed1010005>

**Appendix Table 1.** Causes of death by age group in study of mortality and SARS-CoV-2 seroprevalence, Sudan\*

Cause of death	<20 y	20–34 y	35–49 y	≥50 y	Total
Accident / Trauma	4 (12.9)	7 (22.6)	6 (19.4)	14 (45.2)	31 (100.0)
Cancer	1 (4.3)	2 (8.7)	5 (21.7)	15 (65.2)	23 (100.0)
Chronic kidney disease	0 (0.0)	0 (0.0%)	0 (0.0)	1 (100.0)	1 (100.0)
COVID-19	1 (11.1)	0 (0.0)	1 (11.1)	7 (77.8)	9 (100.0)
Diarrhea	1 (14.3)	1 (14.3)	0 (0.0)	5 (71.4)	7 (100.0)
Don't know	7 (13.0)	3 (5.6)	4 (47.4)	40 (74.1)	54 (100.0)
Isolated fever / Malaria	1 (7.7)	2 (15.4)	2 (15.4)	8 (61.5)	13 (100.0)
Malnutrition	1 (50.0)	0 (0.0)	0 (0.0)	1 (50.0)	2 (100.0)
NCD	1 (1.2)	2 (2.3)	12 (14.0)	71 (82.6)	86 (100.0)
Neonatal death/disease	11 (91.7)	1 (8.3)	0 (0.0)	0 (0.0)	12 (100.0)
Others	6 (11.5)	6 (11.5)	7 (13.5)	33 (63.5)	52 (100.0)
Pregnancy/childbirth related deaths	3 (50.0)	2 (33.3)	1 (16.7)	0 (0.0)	6 (100.0)
Respiratory diseases	5 (29.4)	1 (5.9)	2 (11.8)	9 (52.9)	17 (100.0)
Unknown	9 (0.0)	0 (0.0)	0 (0.0)	1 (100.0)	1 (100.0)
Violence	1 (20)	3 (60.0)	0 (0.0)	1 (20.0)	5 (100.0)
Total	43 (13.5)	30 (9.4)	40 (12.5)	206 (64.6)	319 (100.0)

\*Values are expressed as no. (%). COVID-19, coronavirus disease; NCD, non-communicable disease; SARS-CoV-2, severe acute respiratory syndrome coronavirus 2.

**Appendix Table 2.** Causes of death by age group and study period in study of mortality and SARS-CoV-2 seroprevalence, Sudan\*

Cause of death	<20 y		20–34 y		35–49 y		≥50 y		Total	
	PREP	PAND	PREP	PAND	PREP	PAND	PREP	PAND	PREP	PAND
Accident / trauma	1 (5)	3 (13)	1 (10)	6 (30)	5 (31)	1 (4)	6 (8)	8 (6)	13 (10)	18 (9)
Cancer	1 (5)	0 (0)	1 (10)	1 (5)	2 (12)	3 (12)	6 (8)	9 (7)	10 (8)	13 (7)
Chronic kidney disease	0 (0)	0 (0)	0 (0)	0 (0)	0 (0)	0 (0)	1 (1)	0 (0)	1 (1)	0 (0)
COVID-19	0 (0)	1 (4)	0 (0)	0 (0)	0 (0)	1 (4)	0 (0)	7 (6)	0 (0)	9 (5)
Diarrhea	0 (0)	1 (4)	1 (10)	0 (0)	0 (0)	0 (0)	1 (1)	4 (3)	2 (2)	5 (3)
Don't know	2 (10)	5 (22)	1 (10)	2 (10)	2 (12)	2 (8)	19 (24)	21 (17)	24 (19)	30 (16)
Isolated fever / malaria	1 (5)	0 (0)	1 (10)	1 (5)	1 (6)	1 (4)	2 (2)	6 (5)	5 (4)	8 (4)
Malnutrition	1 (5)	0 (0)	0 (0)	0 (0)	0 (0)	0 (0)	0 (0)	1 (1)	1 (1)	1 (1)
NCD	0 (0)	1 (4)	0 (0)	2 (10)	5 (31)	7 (29)	28 (35)	43 (34)	33 (26)	53 (27)
Neonatal death/disease	6 (30)	5 (22)	0 (0)	1 (5)	0 (0)	0 (0)	0 (0)	0 (0)	6 (5)	6 (3)
Others	2 (10)	4 (17)	2 (20)	4 (20)	1 (6)	6 (25)	15 (19)	18 (14)	20 (16)	32 (17)
Pregnancy/childbirth related	2 (10)	1 (4)	2 (20)	0 (0)	0 (0)	1 (4)	0 (0)	0 (0)	4 (3)	2 (1)
Respiratory infections	4 (20)	1 (4)	0 (0)	1 (5)	0 (0)	2 (8)	2 (2)	7 (6)	6 (5)	11 (6)
Unknown	0 (0)	0 (0)	0 (0)	0 (0)	0 (0)	0 (0)	0 (0)	1 (1)	0 (0)	1 (1)
Violence	0 (0)	1 (4)	1 (10)	2 (10)	0 (0)	0 (0)	0 (0)	1 (1)	1 (1)	4 (2)
Total (n)	20 (100)	23 (100)	10 (100)	20 (100)	16 (100)	24 (100)	80 (100)	126 (100)	100 (100)	193 (100)

\*No major differences were found between the two periods stratified by age groups. PREP, Prepandemic period, January 1, 2019– February 29, 2020. PAND, pandemic period, March 1, 2020, until the end of the survey. NCD, non-communicable disease.

The most common cause of death as reported by the heads of households were non-communicable diseases, followed by trauma/accidents and cancer

**Appendix Table 3.** Summary of symptoms reported before death in prepandemic and pandemic periods in study of mortality and SARS-CoV-2 seroprevalence, Sudan\*

Symptom	Prepandemic, n (%)	Pandemic, n (%)	p value
Fever	16 (12.7)	32 (16.6)	<0.001
Cough	7 (5.6)	18 (9.3)	0.288
Shortness of breath	19 (15.1)	28 (14.5)	0.873
Weakness/Fatigue	14 (11.1)	30 (15.5)	0.32
Extreme fatigue	6 (4.8)	22 (11.4)	0.044
Headaches	8 (6.3)	20 (10.4)	0.233
Muscle pain	6 (4.8)	23 (11.9)	0.044
Sore throat	3 (2.4)	3 (1.6)	0.684
Runny nose	1 (0.8)	1 (0.5)	>0.999
Loss appetite	6 (4.8)	20 (10.4)	0.094
Diarrhea	7 (5.6)	11 (5.7)	>0.999
Change mental state	5 (4.0)	5 (2.6)	0.524
Loss taste/odour	1 (0.8)	1 (0.5)	>0.999
No symptoms	51 (40.5)	67 (4.7)	0.343
Don't know	25 (19.8)	40 (20.7)	0.888

\*Reported symptoms before death were similar during both periods, apart from more commonly reported extreme fatigue and muscle pain during the pandemic period.

**Appendix Table 4.** Reported comorbidities for deaths during the prepandemic and pandemic periods in study of mortality and SARS-CoV-2 seroprevalence, Sudan\*

Location	Prepandemic, n (%)	Pandemic, n (%)	p value
Asthma	0 (0.0)	3 (3.6)	0.553
Autoimmune disease (polyarthritis, Crohn's disease, lupus, multiple sclerosis...)	1 (2.1)	2 (2.4)	>0.999
Cancer	3 (6.2)	6 (7.1)	>0.999
Chronic lung disease	0 (0.0)	1 (1.2)	>0.999
Congestive heart failure	3 (6.2)	1 (1.2)	0.136
Coronary heart disease	3 (6.2)	7 (8.3)	0.747
Current smoker	0 (0.0)	1 (1.2)	>0.999
Diabetes	11 (22.9)	19 (22.6)	>0.999
Hepatitis B	0 (0.0)	1 (1.2)	>0.999
Hypertension	16 (33.3)	24 (28.6)	0.563
Kidney disease	5 (10.4)	7 (8.3)	0.757
Other	6 (12.5)	12 (14.3)	>0.999

\*We saw no differences between the 2 periods for rates of comorbidities.

**Appendix Table 5.** Access to healthcare in the prepandemic and pandemic periods in study of mortality and SARS-CoV-2 seroprevalence, Sudan\*

Access to healthcare	Pre-pandemic, n (%)	Pandemic, n (%)	p value
Health center	4 (5.0)	10 (8.3)	0.413
Hospital	66 (82.5)	90 (75.0)	0.227
Other	1 (1.2)	1 (0.8)	>0.999
Pharmacist	0 (0.0)	1 (0.8)	>0.999
Self-medication: modern medicine	8 (10.0)	18 (15.0)	0.392
Self-medication: traditional medicine	1 (1.2)	0 (0.0)	0.400

\*No major differences in the access to health facilities and place of death were seen between the two periods.

**Appendix Table 6.** Location of death for the prepandemic and pandemic periods in study of mortality and SARS-CoV-2 seroprevalence, Sudan\*

Location of death	Prepandemic, n (%)	Pandemic, n (%)	p value
Don't know	1 (0.8)	0 (0.0)	0.395
Health center	1 (0.8)	3 (1.6)	>0.999
Home	55 (43.7)	91 (47.2)	0.567
Hospital	63 (50)	87 (45.1)	0.423
On the way to the health center/hospital	1 (0.8)	6 (3.1)	0.251
Other	5 (4)	6 (3.1)	0.758

\*No major differences in the place of death were seen between the two periods.

**Appendix Table 7.** Status of consent by age group and sex to participate in study of SARS-CoV-2 seroprevalence, Sudan

Age group	Consented, n (%)		Refused, n (%)		Absent, n (%)	
	F	M	F	M	F	M
<5 y	130 (43.5)	169 (56.5)	66 (58.4)	47 (41.6)	14 (48.3)	15 (51.7)
5–19 y	424 (54.0)	361 (46.0)	123 (46.4)	142 (53.6)	124 (43.5)	161 (56.5)
20–34 y	383 (60.9)	246 (39.1)	74 (40.9)	107 (59.1)	59 (26.5)	164 (73.5)
35–49 y	217 (63.5)	125 (36.5)	20 (26.0)	57 (74.0)	27 (27.0)	73 (73.0)
≥50 y	159 (49.8)	160 (50.2)	37 (44.6)	46 (55.4)	19 (24.1)	60 (75.9)
Total	2,374 (62.3)		719 (18.9)		716 (18.8)	

**Appendix Table 8.** Risk factors associated with a positive SARS-Cov-2 rapid antibody test, Sudan\*

Risk factor	Crude OR (95% CI)	Adjusted OR	
		OR (95% CI)	p-value
Age†	1.01 (1.01–1.02)	1.01 (1.00–1.02)	0.001
Sex‡	0.82 (0.66–1.02)	0.84 (0.67–1.05)	0.127
Past medical history§	1.30 (1.00–1.69)	1.06 (0.79–1.42)	0.703
Exposed to case in household¶	1.68 (1.35–2.08)	1.61 (1.21–2.01)	<0.001

\*OR = odds ratio.

†Continuous variable.

‡Reference value is female.

§Reference value has a medical history.

¶Reference value is have been exposed to a case within the household.

Other than age, living with person who was seropositive led to a 1.68 (odds ratio [OR] 95% CI 1.35–2.08,  $p < 0.001$  S7 Table) fold increase in the odds of being seropositive. Among all 555 included households, 364 (65.6%) had  $\geq 1$  positive household member and 203 household (36.6%) at least two. Sex was not a significant predictor for seroprevalence ( $p = 0.127$ ).

**Appendix Table 9.** Summary of positive rapid serologic testing by antibody status in study of SARS-CoV-2 seroprevalence, Sudan\*

Age group	Positive IgG ,n (%)	Positive IgG and IgM ,n (%)	Positive IgM ,n (%)	Total ,n (%)
<5 y	52 (92.9)	1 (1.8)	3 (5.4)	56 (100.0)
5–19 y	218 (90.8)	19 (7.9)	3 (1.2)	240 (100.0)
20–34 y	175 (78.5)	27 (12.1)	21 (9.4)	223 (100.0)
35–49 y	112 (83.0)	17 (12.6)	6 (4.4)	135 (100.0)
≥50 y	134 (83.8)	22 (13.8)	4 (2.5)	160 (100.0)
Total	691 (84.9)	86 (10.6)	37 (4.5)	814 (100.0)

\*Among those who tested positive, most presented IgG antibodies (84.9%), whereas 10.6% tested positive for both antibodies and 4.5% for IgM only.

**Appendix Table 10.** Summary of ELISA and rapid test results in study of SARS-CoV-2 seroprevalence, Sudan\*

Result	ELISA negative, n (%)	ELISA positive, n (%)	Total, n (%)
RDT negative	443 (76.2)	138 (23.8)	581 (100.0)
RDT positive	60 (24.6)	184 (75.4)	244 (100.0)
Total	503 (61.0)	322 (39.0)	825 (100.0)

\* ELISA, enzyme-linked immunosorbent assay. RDT, rapid diagnostic test.

825 samples were tested with the ELISA, of which 244 (29.6%) and 322 (39.0%) were positive for SARS-CoV-2 IgG by the RDT and ELISA respectively). Among 198 cases with discordant results considering ELISA as standard, 60 (30.0%) were false positives and 138 (70.0%) false negatives according to the RDT. (serology).

**Appendix Table 11.** Prevalence of SARS-CoV-2 antibodies based on rapid serologic test by age group and sex in study of SARS-CoV-2 seroprevalence, Sudan\*

Age group	Prevalence in female patients, % (95% CI)	Prevalence in male patients, % (95% CI)	Total, % (95% CI)
<5 y	22.9 (17.0–30.1)	15.2 (9.7–23.1)	18.6 (14.0–24.2)
5–19 y	32.1 (27.0–37.6)	28.7 (23.3–34.8)	30.5 (26.3–35.1)
20–34 y	32.0 (27.3–37.1)	40.6 (33.0–48.7)	35.3 (30.7–40.3)
35–49 y	40.5 (34.5–46.9)	37.4 (28.6–47.1)	39.4 (34.9–44.1)
≥50 y	50.4 (41.5–59.2)	50.1 (42.8–57.4)	50.2 (44.0–56.5)

```

proportion      95%-CI
Study 1         0.667 [0.563; 0.760]
Study 2         0.717 [0.642; 0.784]
Study 3         0.577 [0.521; 0.632]
Study 4         0.820 [0.787; 0.851]
Study 5         0.805 [0.752; 0.851]
Study 6         0.896 [0.866; 0.922]
Study 7         0.767 [0.577; 0.901]

Number of studies combined: k = 7

              proportion      95%-CI
Random effects model      0.766 [0.678; 0.836]

Quantifying heterogeneity:
tau^2 = 0.3118; tau = 0.5584; I^2 = 95.0% [91.9%; 96.9%]; H = 4.48 [3.52; 5.70]

Test of heterogeneity:
  Q d.f.  p-value      Test
 120.58   6 < 0.0001    Wald-type
 126.95   6 < 0.0001    Likelihood-Ratio

Details on meta-analytical method:
- Random intercept logistic regression model
- Maximum-likelihood estimator for tau^2
- Logit transformation
- Clopper-Pearson confidence interval for individual studies
    
```

**Appendix Figure 1.** Output of the metaprop function for the estimation of sensitivity of rapid diagnostic test in study of SARS-CoV-2 seroprevalence and patient deaths, Sudan.

```

      proportion      95%-CI
Study 1      1.000 [0.964; 1.000]
Study 2      0.990 [0.964; 0.999]
Study 3      0.976 [0.931; 0.995]
Study 4      0.991 [0.976; 0.997]
Study 5      0.997 [0.981; 1.000]
Study 6      0.984 [0.964; 0.995]
Study 7      0.988 [0.932; 1.000]

Number of studies combined: k = 7

      proportion      95%-CI
Random effects model      0.990 [0.983; 0.994]

Quantifying heterogeneity:
tau^2 = 0; tau = 0; I^2 = 0.0% [0.0%; 52.4%]; H = 1.00 [1.00; 1.45]

Test of heterogeneity:
  Q d.f. p-value      Test
  3.68   6  0.7198      Wald-type
  6.52   6  0.3675 Likelihood-Ratio

```

**Appendix Figure 2.** Output of the metaprop function for the estimation of the specificity of rapid diagnostic test in study of SARS-CoV-2 seroprevalence and patient deaths, Sudan.

```

      proportion      95%-CI
Study 1      0.864 [0.651; 0.971]
Study2      0.900 [0.735; 0.979]
Study 3      0.711 [0.557; 0.836]
Study 4      0.598 [0.490; 0.699]

Number of studies combined: k = 4

      proportion      95%-CI
Random effects model      0.769 [0.611; 0.876]

Quantifying heterogeneity:
tau^2 = 0.3653; tau = 0.6044; I^2 = 74.4% [28.8%; 90.8%]; H = 1.98 [1.19; 3.30]

Test of heterogeneity:
  Q d.f. p-value      Test
  11.74   3  0.0083      Wald-type
  14.58   3  0.0022 Likelihood-Ratio

```

**Appendix Figure 3.** Output of the metaprop function for the estimation of the sensitivity for the ELISA in study of SARS-CoV-2 seroprevalence and patient deaths, Sudan.



```

      proportion      95%-CI
Study 1      0.962 [0.870; 0.995]
Study2       1.000 [0.955; 1.000]
Study 3       1.000 [0.846; 1.000]
Study 4       0.993 [0.976; 0.999]

Number of studies combined: k = 4

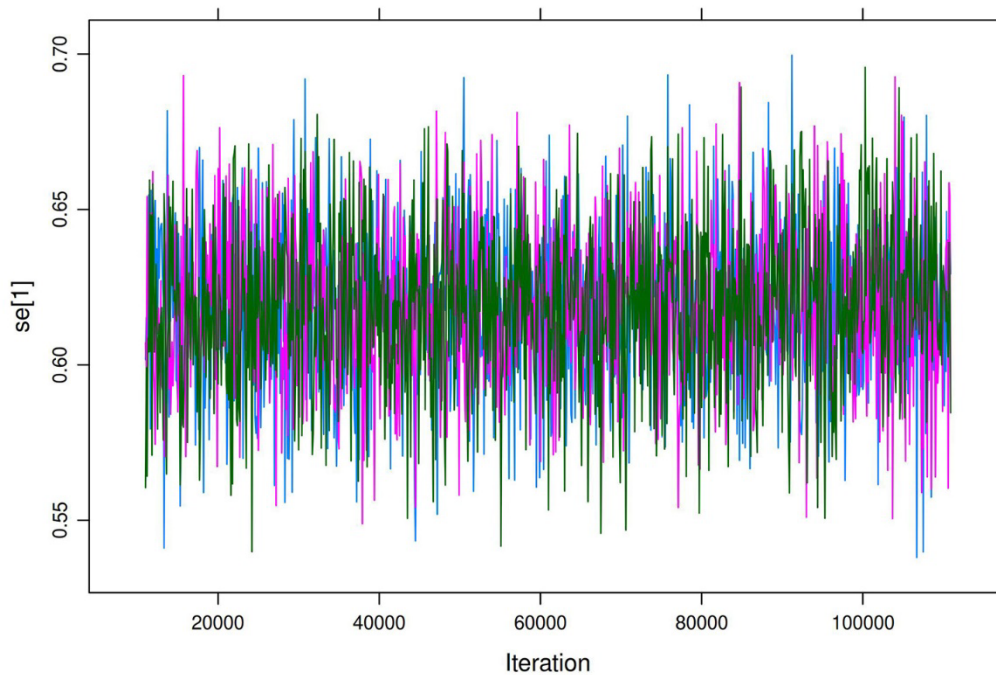
      proportion      95%-CI
Random effects model      0.991 [0.977; 0.997]

Quantifying heterogeneity:
tau^2 = 0; tau = 0; I^2 = 0.0% [0.0%; 84.7%]; H = 1.00 [1.00; 2.56]

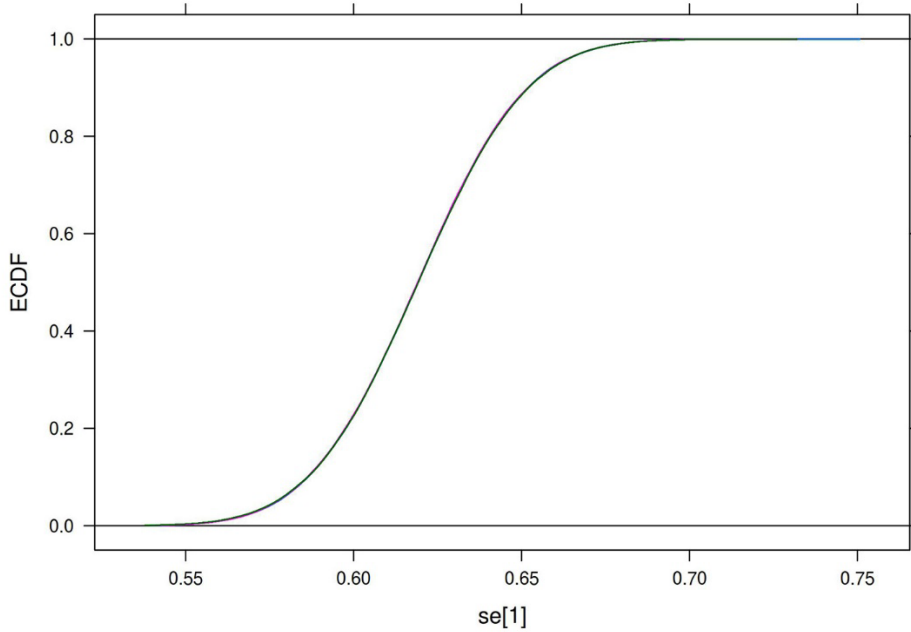
Test of heterogeneity:
  Q d.f. p-value      Test
  3.00  3  0.3917      Wald-type
  4.76  3  0.1904 Likelihood-Ratio

```

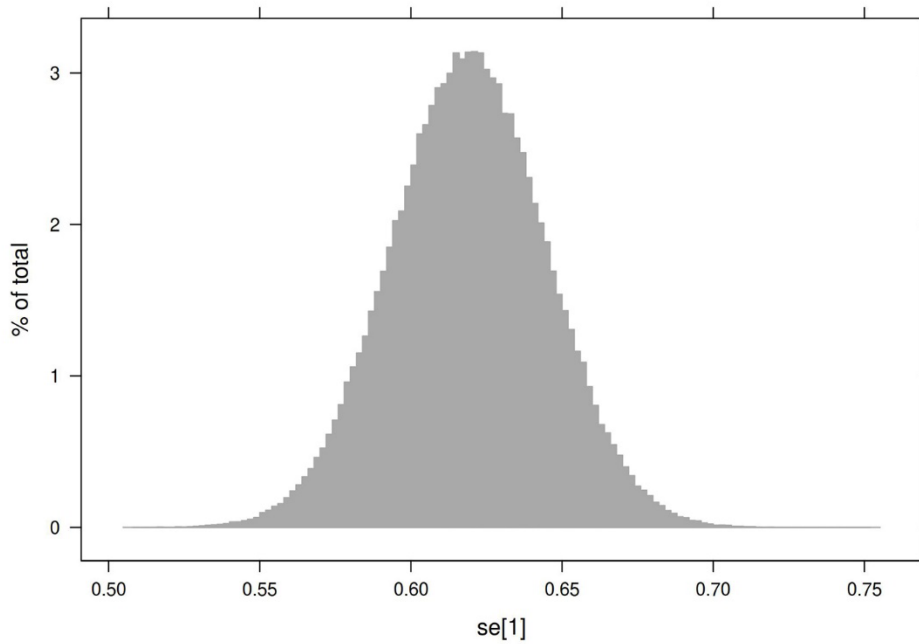
**Appendix Figure 4:** Output of the metaprop function for the estimation of the specificity of the ELISA in study of SARS-CoV-2 seroprevalence and patient deaths, Sudan.



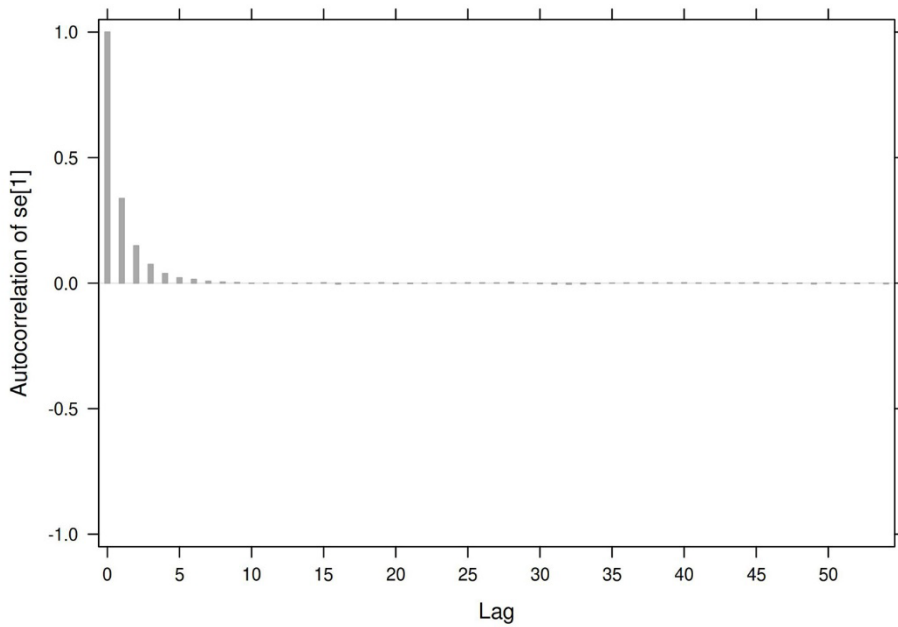
**Appendix Figure 5:** Output of the runjags function as a trace plot of the 3 chains to estimate the sensitivity of the rapid diagnostic test in study of SARS-CoV-2 seroprevalence and patient deaths, Sudan.



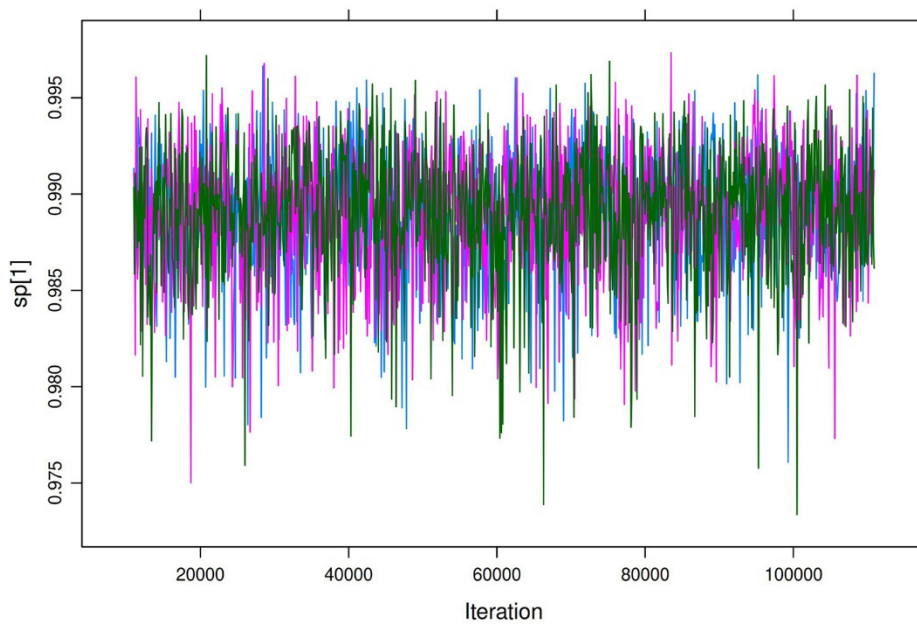
**Appendix Figure 6:** Output of the runjags function as an ECDF plot showing the 3 overlapping chains to estimate the sensitivity of the rapid diagnostic test in study of SARS-CoV-2 seroprevalence and patient deaths, Sudan.



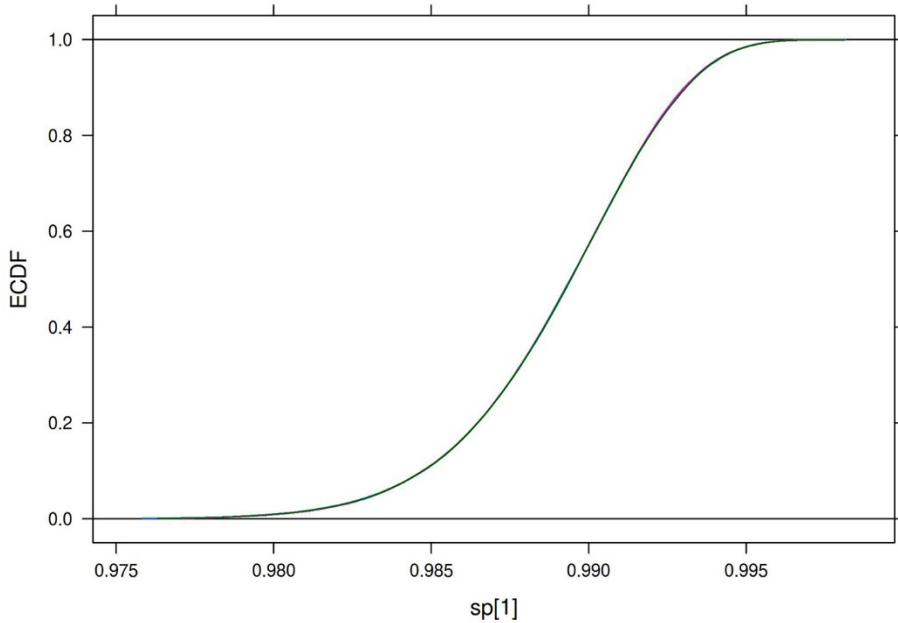
**Appendix Figure 7:** Output of the runjags function as histograms of the combined chains to estimate the sensitivity of rapid diagnostic test in study of SARS-CoV-2 seroprevalence and patient deaths, Sudan.



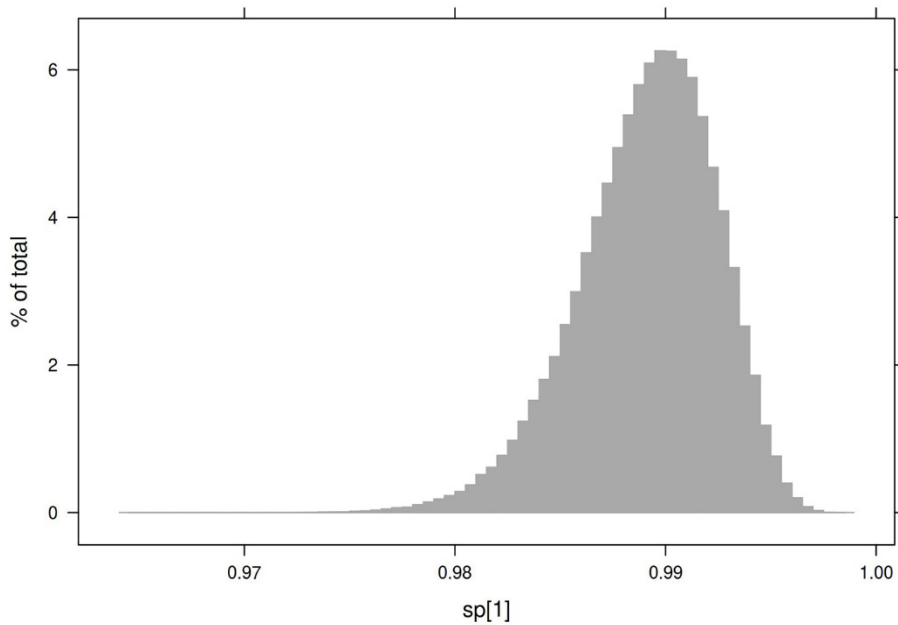
**Appendix Figure 8:** Output of the runjags function as an autocorrelation plot to estimate the sensitivity of rapid diagnostic test in study of SARS-CoV-2 seroprevalence and patient deaths, Sudan.



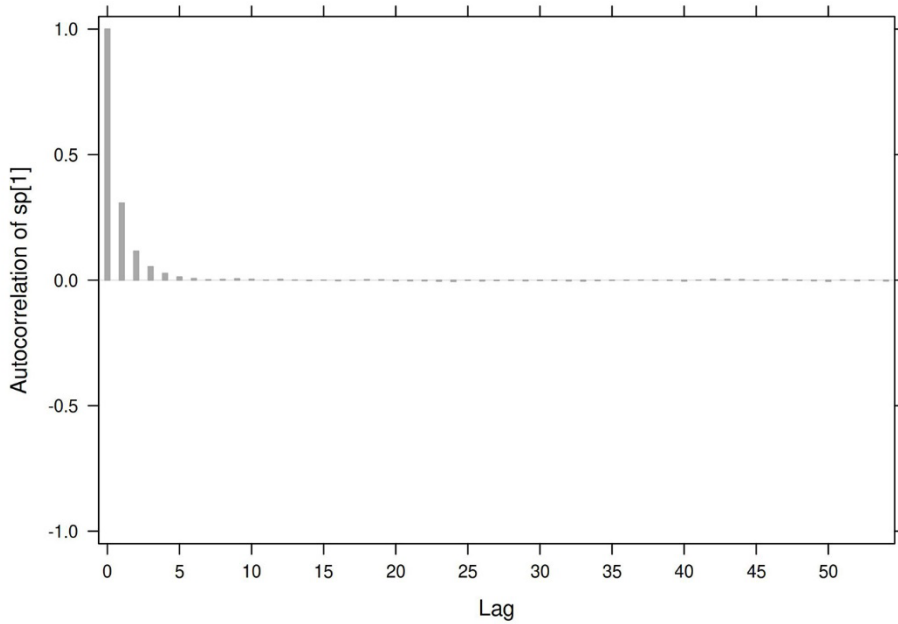
**Appendix Figure 9:** Output of the runjags function as a trace plot of 3 stationary chains to estimate the specificity of rapid diagnostic test in study of SARS-CoV-2 seroprevalence and patient deaths, Sudan.



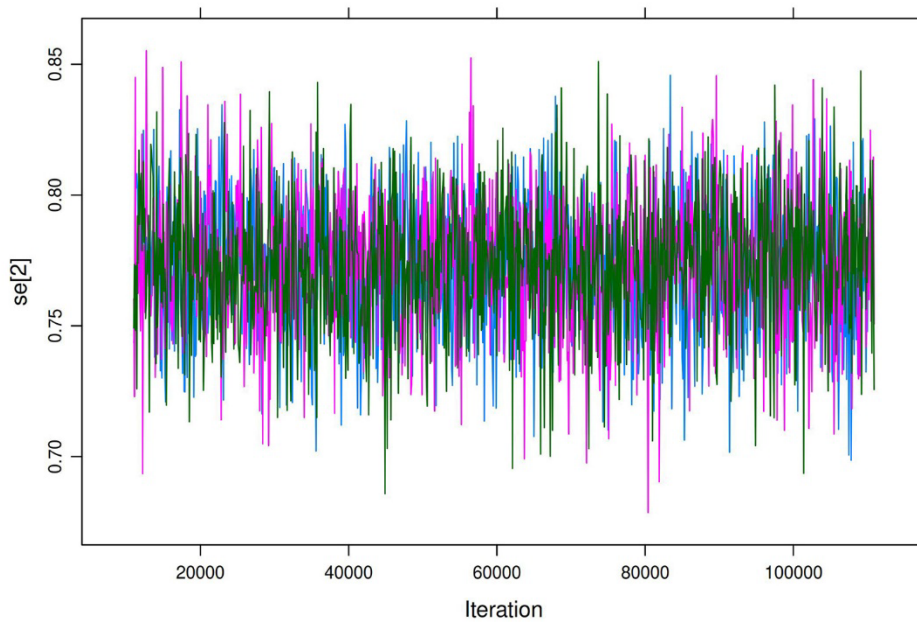
**Appendix Figure 10:** Output of the runjags function as an ECDF plot showing the 3 overlapping chains to estimate the specificity of rapid diagnostic test in study of SARS-CoV-2 seroprevalence and patient deaths, Sudan.



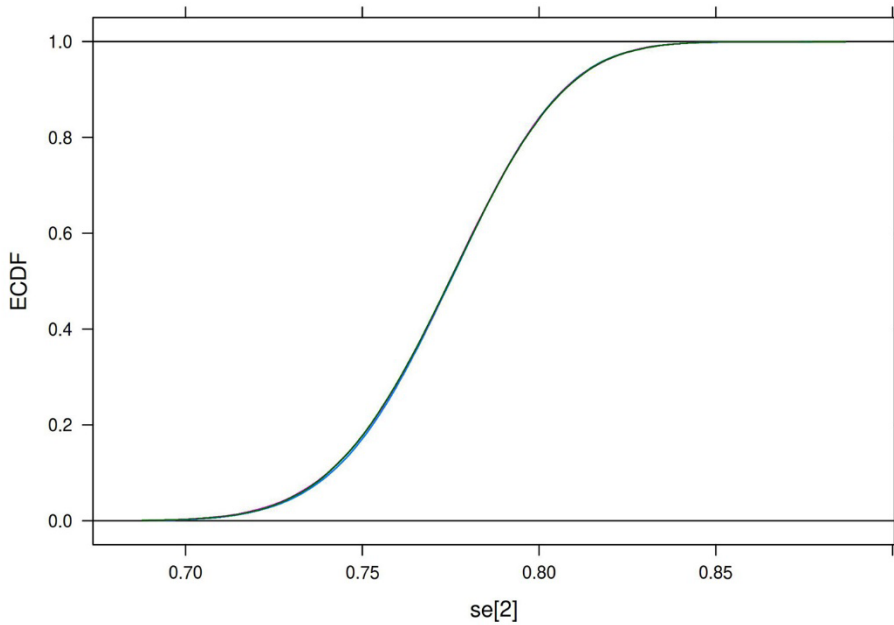
**Appendix Figure 11:** Output of the runjags function as histograms of the combined chains to estimate the specificity of rapid diagnostic test in study of SARS-CoV-2 seroprevalence and patient deaths, Sudan.



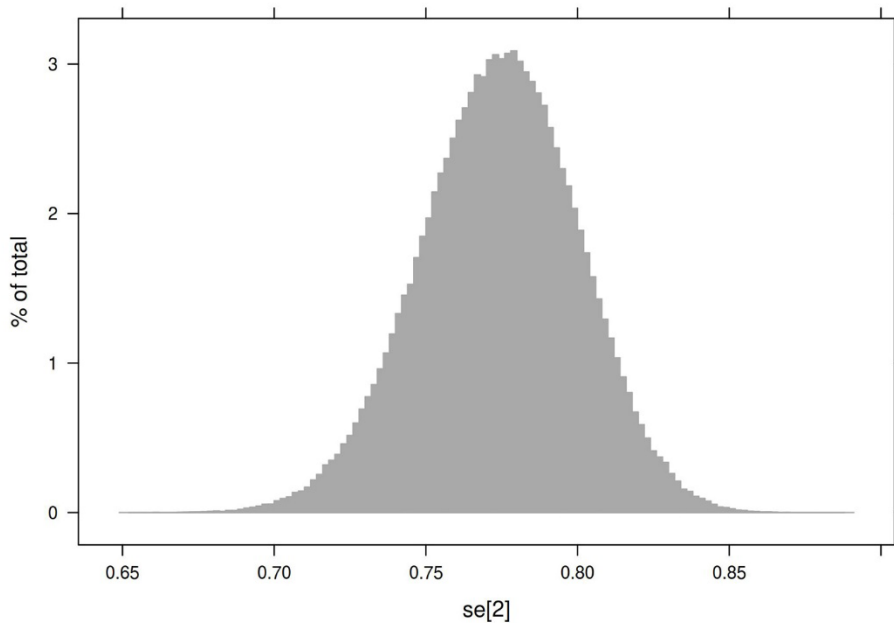
**Appendix Figure 12:** Output of the runjags function as an autocorrelation plot to estimate the specificity of rapid diagnostic test in study of SARS-CoV-2 seroprevalence and patient deaths, Sudan.



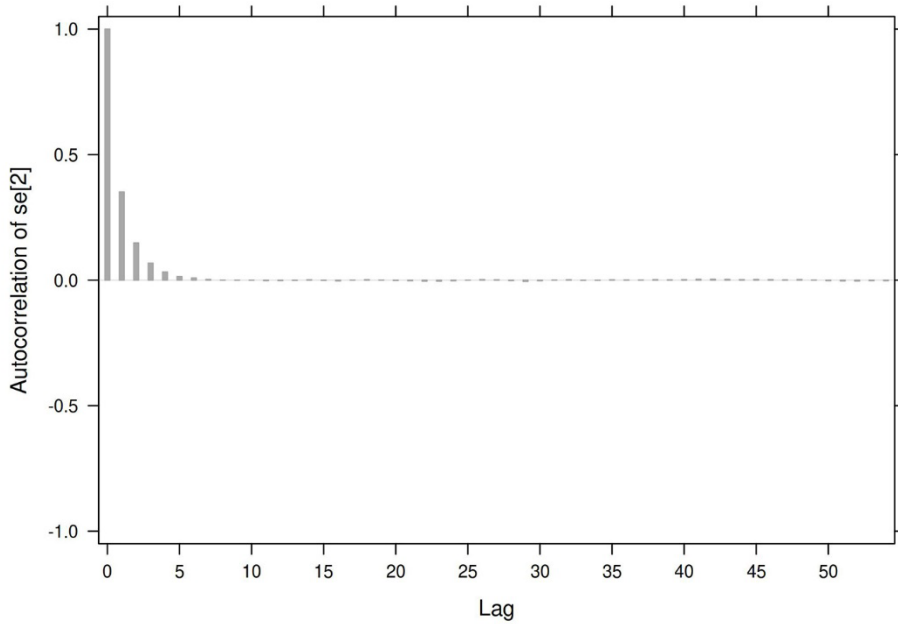
**Appendix Figure 13:** Output of the runjags function as a trace plot of the 3 stationary chains to estimate the sensitivity of the ELISA in study of SARS-CoV-2 seroprevalence and patient deaths, Sudan.



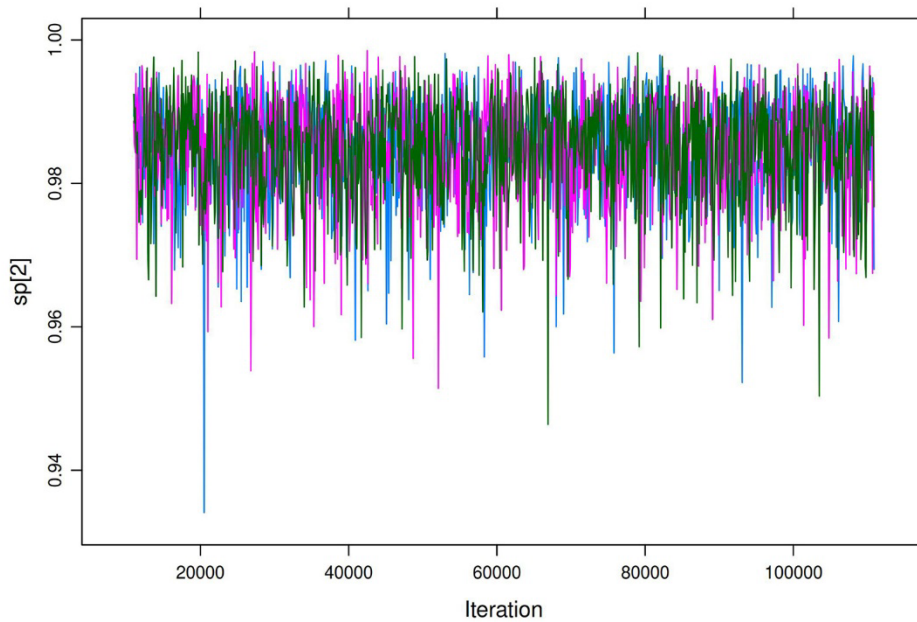
**Appendix Figure 14:** Output of the runjags function as an ECDF plot showing the 3 overlapping chains to estimate the sensitivity of the ELISA in study of SARS-CoV-2 seroprevalence and patient deaths, Sudan.



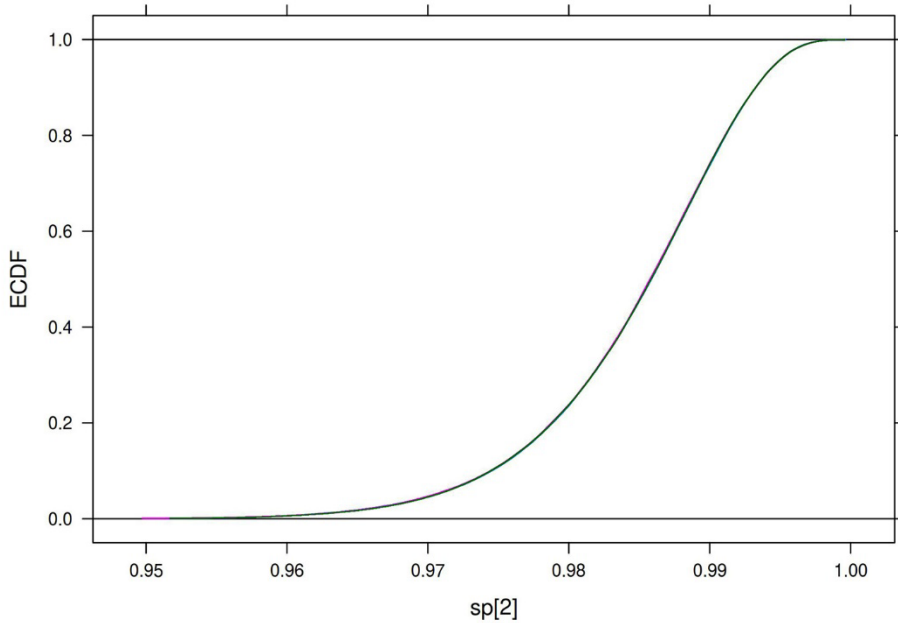
**Appendix Figure 15:** Output of the runjags function as histograms of the combined chains to estimate the sensitivity of the ELISA in study of SARS-CoV-2 seroprevalence and patient deaths, Sudan..



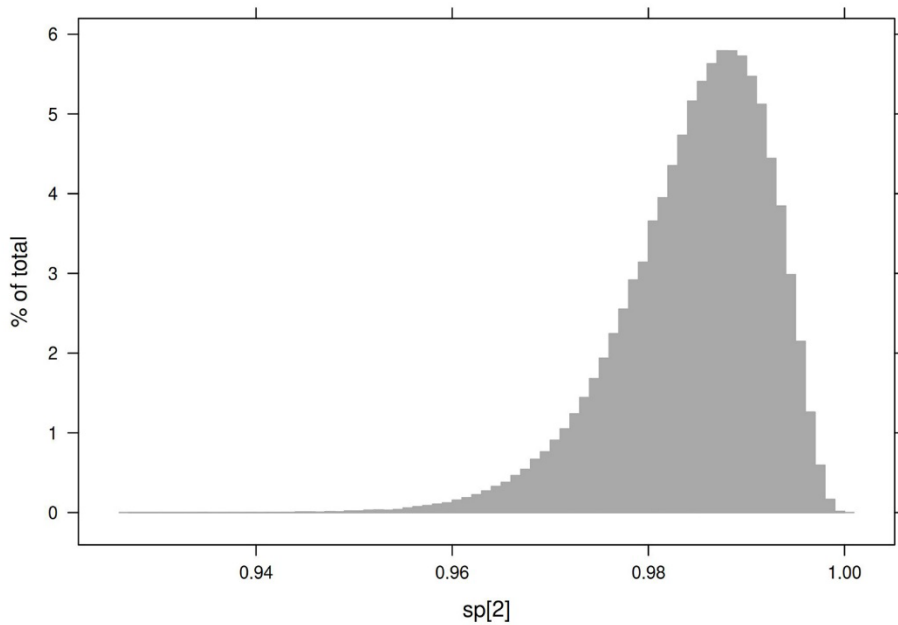
**Appendix Figure 16:** Output of the runjags function as an autocorrelation plot to estimate the sensitivity of the ELISA in study of SARS-CoV-2 seroprevalence and patient deaths, Sudan.



**Appendix Figure 17:** Output of the runjags function as a trace plot of the 3 stationary chains to estimate the specificity of the ELISA in study of SARS-CoV-2 seroprevalence and patient deaths, Sudan.

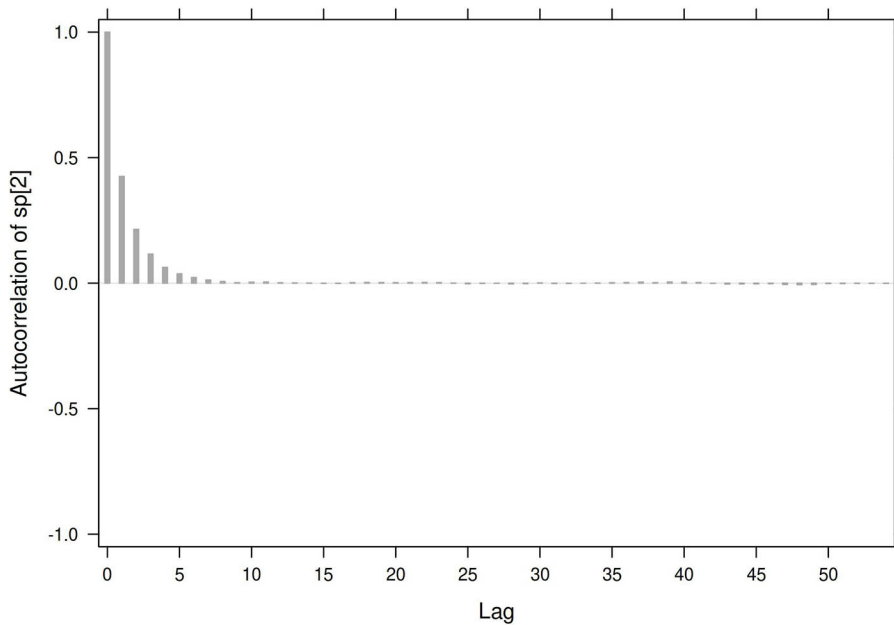


**Appendix Figure 18:** Output of the runjags function as an ECDF plot showing the 3 overlapping chains to estimate the specificity of the ELISA in study of SARS-CoV-2 seroprevalence and patient deaths, Sudan.

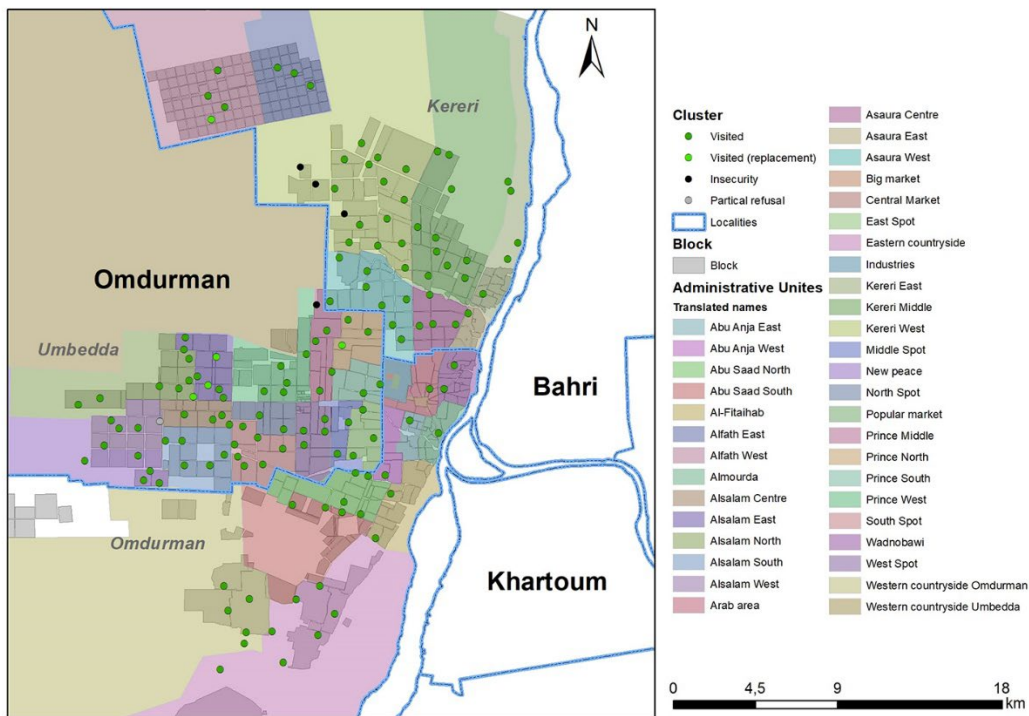


**Appendix Figure 19:** Output of the runjags function as histograms of the combined chains to estimate the specificity of the ELISA in study of SARS-CoV-2 seroprevalence and patient deaths, Sudan.

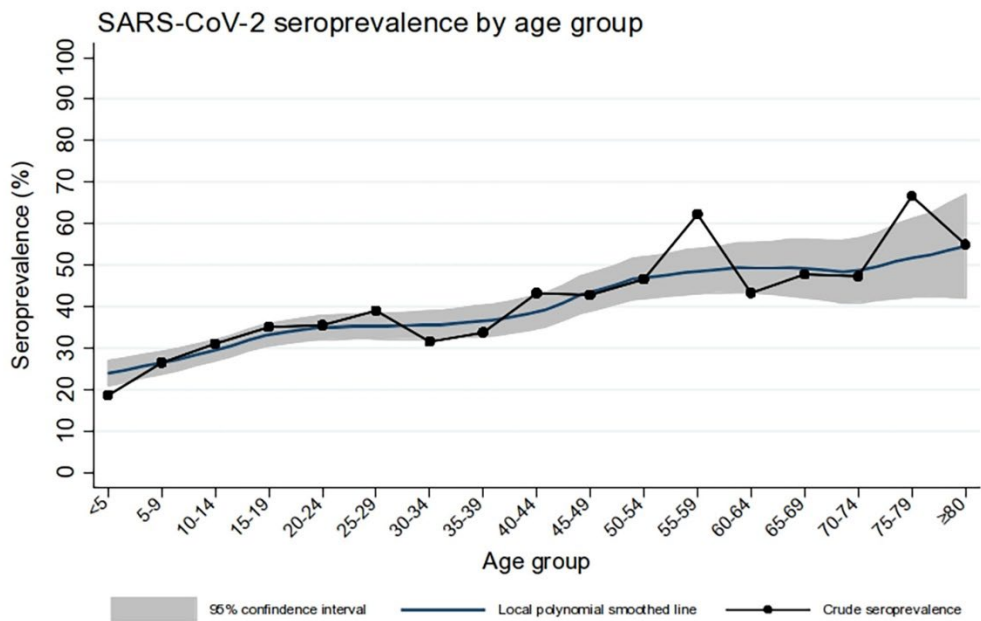




**Appendix Figure 20:** Output of the runjags function as an autocorrelation plot to estimate the specificity of the ELISA in study of SARS-CoV-2 seroprevalence and patient deaths, Sudan.



**Appendix Figure 21.** Distribution of clusters of SARS-CoV-2 seroprevalence in the 34 administrative units in greater Omdurman, Sudan.



**Appendix Figure 22.** SARS-CoV-2 seroprevalence by age group in study of SARS-CoV-2 seroprevalence and patient deaths, Sudan.