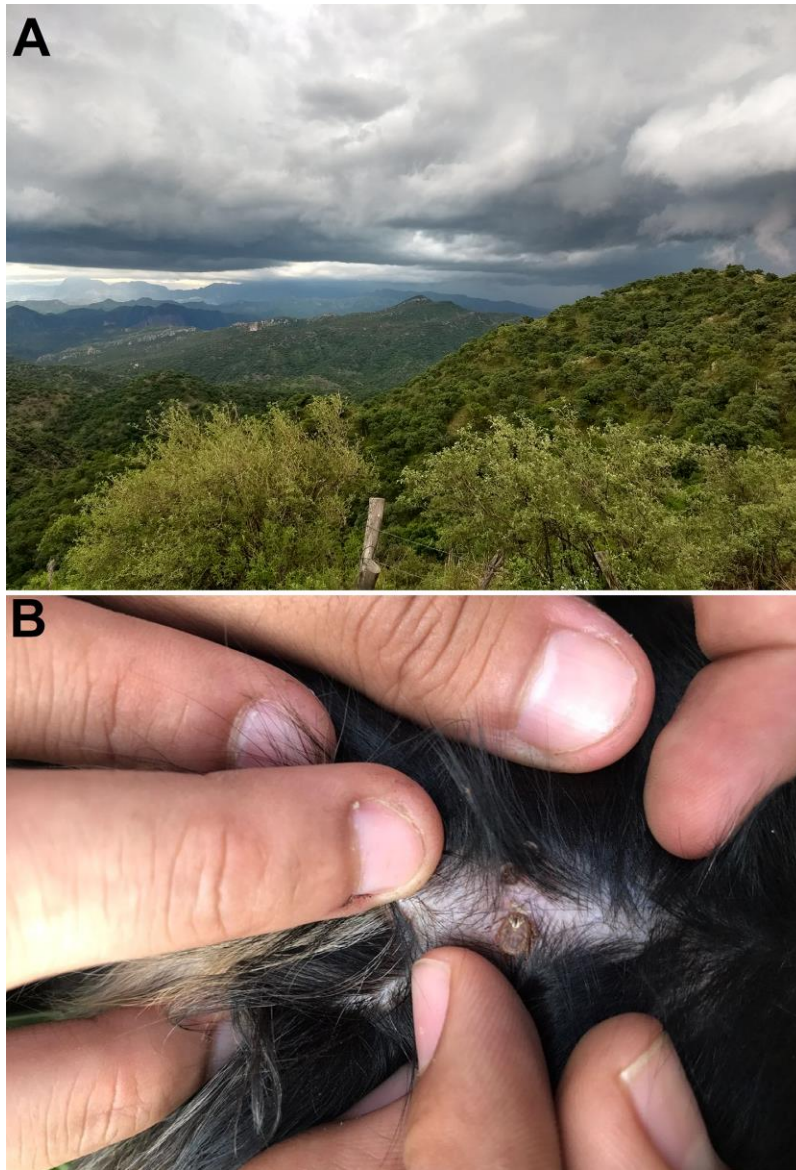


# *Rickettsia parkeri* and *Candidatus Rickettsia andeanae* in *Amblyomma maculatum* Ticks, Mexico

## Appendix



**Appendix Figure.** A) The areas of study consisted predominantly of oak forest and grasslands. B) *Amblyomma maculatum* tick attached at the skin of a free-roaming dog.