

Genomic Analysis of Fluoroquinolone- and Tetracycline-Resistant *Campylobacter jejuni* Sequence Type 6964 in Humans and Poultry, New Zealand, 2014–2016

Nigel P. French, Ji Zhang, Glen P. Carter, Anne C. Midwinter, Patrick J. Biggs, Kristin Dyet, Brent J. Gilpin, Danielle J. Ingle, Kerry Mulqueen, Lynn E. Rogers, David A. Wilkinson, Sabrina S. Greening, Petra Muellner, Ahmed Fayaz, Deborah A. Williamson

In 2014, antimicrobial drug-resistant *Campylobacter jejuni* sequence type 6964 emerged contemporaneously in poultry from 3 supply companies in the North Island of New Zealand and as a major cause of campylobacteriosis in humans in New Zealand. This lineage, not previously identified in New Zealand, was resistant to tetracycline and fluoroquinolones. Genomic analysis revealed divergence into 2 major clades; both clades were associated with human infection, 1 with poultry companies A and B and the other with company C. Accessory genome evolution was associated with a plasmid, phage insertions, and natural transformation. We hypothesize that the *tetO* gene and a phage were inserted into the chromosome after conjugation, leaving a remnant plasmid that was lost from isolates from company C. The emergence and rapid spread of a resistant clone of *C. jejuni* in New Zealand, coupled with evolutionary change in the accessory genome, demonstrate the need for ongoing *Campylobacter* surveillance among poultry and humans.

Campylobacteriosis caused by *Campylobacter jejuni* is one of the most common zoonotic diseases; in many countries, incidence is increasing (1). Typically, human infection with *C. jejuni* results in an acute, self-limiting gastroenteritis, and treatment is largely supportive. However, antimicrobial drug treatment is indicated for patients who have invasive infection, have severe and persistent gastroenteritis, or are immunocompromised. The mainstays of therapy are macrolides and fluoroquinolones; however, resistance to these drugs, particularly fluoroquinolones, is common in many parts of the world and precludes their clinical usefulness (2).

Among industrialized countries, one of the highest rates of campylobacteriosis is found in New Zealand. In 2017, there were 6,482 notified cases in New Zealand, representing an incidence of ≈ 150 cases/100,000 population (3). The high proportion of cases in New Zealand is thought to result from ingestion of contaminated food, typically undercooked poultry, which has prompted regulatory and voluntary implementation of control measures along the poultry supply chain (4).

Poultry production in New Zealand is dominated by 3 major supply companies and several smaller companies. No fresh chicken meat is imported into New Zealand (5). Studies in New Zealand have identified dominant multilocus sequence types (STs) of *C. jejuni* associated with poultry from particular companies; the most prevalent ST associated with human cases during 2005–2008, ST474, was predominant in poultry from 1 company (5–7). The vertically contained nature of the New Zealand poultry supply, which involves minimal transfer of birds between poultry companies, is considered to be a major contributor to the dominance of particular strains at individual companies (5).

Author affiliations: Massey University, Palmerston North, New Zealand (N.P. French, J. Zhang, A.C. Midwinter, P.J. Biggs, L.E. Rogers, D.A. Wilkinson, S.S. Greening, A. Fayaz); New Zealand Food Safety Science and Research Centre, Palmerston North (N.P. French, D.A. Wilkinson); The University of Melbourne, Melbourne, Victoria, Australia (G.P. Carter, D.J. Ingle, D.A. Williamson); Institute of Environmental Science and Research Limited, Christchurch, New Zealand (K. Dyet, B.J. Gilpin); Australian National University, Canberra, Australian Capital Territory, Australia (D.J. Ingle); Poultry Industry Association of New Zealand, Auckland, New Zealand (K. Mulqueen); EPI-interactive, Wellington, New Zealand (P. Muellner)

DOI: <https://doi.org/10.3201/eid2512.190267>

In May 2014, a previously unreported *C. jejuni* clone of ST6964, a member of a poultry-associated clonal complex (CC), CC354 (8), resistant to fluoroquinolones and tetracyclines, was isolated from poultry carcasses at a *Campylobacter* sentinel surveillance site (9) on the North Island of New Zealand. Concurrently, throughout 2014 and 2015, sporadic and outbreak-associated human cases of campylobacteriosis associated with resistant ST6964 were identified across New Zealand. Subsequent cross-sectional studies of poultry and humans suggested that fluoroquinolone resistance in *C. jejuni* had increased from <5% to 19% over 1 year (10). The unprecedented rapid emergence and geographic spread of this resistant strain has widespread implications. A marked shift from low to relatively high levels of antimicrobial drug resistance in *Campylobacter* spp. in New Zealand is a concern for food safety and public health. Furthermore, evidence of very rapid spread across the vertically contained poultry companies requires reevaluation of biosecurity measures in the industry. To determine which factors may have contributed to the dissemination of this clone in New Zealand, we undertook a detailed genomic analysis of ST6964 isolates from humans and poultry collected during 2014–2016.

Methods

Ethics Statement

Approval from the Multi-Region Ethics Committee, New Zealand, is provided for work related to the *Campylobacter* sentinel surveillance site (application no. MEC/10/16/EXP). Isolates were collected and analyzed through routine public health investigation activities. The 2006 guidelines from the National Ethics Advisory Committee, Ministry of Health, Wellington, New Zealand, state that these activities do not require ethics committee review.

Setting and Sampling Strategies

The 2014 isolation of antimicrobial drug-resistant *C. jejuni* ST6964 from humans and poultry led to systematic surveys of cases in humans and poultry aimed at determining the extent of spread of this lineage into the food supply and the origin of human cases. During 2014–2016, we collected antimicrobial drug-resistant *C. jejuni* ST6964 isolates from 4 sources. The first source was whole poultry carcasses and fecal samples from humans with campylobacteriosis at the sentinel site from May 1, 2014, through December 31, 2015 (9). The second source was a cross-sectional survey of human cases conducted from May 1 through October 31, 2015 (10). Five community diagnostic laboratories, covering all major population centers in the North and South Islands, were asked to refer *C. jejuni* isolates from humans to the Institute of Environmental Science and Research Ltd (ESR),

Wellington, New Zealand, for the survey. The third source was samples submitted directly to ESR from humans with antimicrobial drug-resistant campylobacteriosis. The fourth source was 2 cross-sectional studies of pooled cecal samples from slaughtered poultry from the major companies (Appendix Figure 1, <https://wwwnc.cdc.gov/EID/article/25/12/19-0267-App1.pdf>). A total of 227 isolates were included in the analysis.

Microbiological Testing

We isolated *C. jejuni* from whole poultry carcasses and fecal samples from humans at the sentinel site as described previously (11). Isolates from pooled cecal samples came from swab samples taken from the pooled ceca of 5 chickens that were from the same poultry shed and slaughtered in a commercial poultry factory. Swabs in Amies with charcoal transport media (Copan, <https://www.copangroup.com>) were transported chilled to ^mEpiLab (Massey University, Palmerston North, New Zealand) for microaerobic culture at 42°C in a microaerobic incubator (Don Whitley Scientific, <https://www.dwsscientific.com>) on modified charcoal cefoperazone deoxycholate agar (mCCDA; Fort Richard, <https://www.fortrichard.com>) and mCCDA-cip/tet (LabM Ltd., <http://www.labm.com>) containing 1 µg/mL ciprofloxacin and 4 µg/mL tetracycline (Sigma-Aldrich, <https://www.sigmaaldrich.com>). We subcultured colonies that resembled *C. jejuni* on the mCCDA-cip/tet plates onto Columbia horse blood agar plates (Fort Richard) and incubated them microaerobically at 42°C. All isolates from poultry carcasses and human fecal samples and a subset of those isolated from mCCDA-cip/tet from pooled chicken ceca were speciated by PCR (12). We determined susceptibility to ciprofloxacin and tetracycline according to Clinical and Laboratory Standards Institute (CLSI) methods, by using disk diffusion (13).

For human clinical isolates from the cross-sectional survey and direct submissions to ESR, we determined susceptibility to ciprofloxacin, erythromycin, and tetracycline by using the methods described by the CLSI, with either Etests or disk diffusion (13). Tests were performed on Mueller-Hinton agar with 5% sheep blood and incubated microaerobically at 36°C–37°C for 48 h. We interpreted MICs according to CLSI breakpoints (13) and disk-diffusion results according to European Committee on Antimicrobial Susceptibility Testing clinical breakpoints (14). We subtyped *C. jejuni* isolates from humans and fresh chicken carcasses and a subset of those from pooled chicken ceca by multilocus sequence typing (MLST) (15) as described (11).

Whole-Genome Sequencing

For Illumina sequencing, we extracted genomic DNA from bacterial isolates on a JANUS automated workstation (PerkinElmer, <https://www.perkinelmer.com>) by

using Chemagic magnetic bead technology, according to the manufacturer's instructions. We prepared DNA libraries by using a NexteraXT DNA preparation kit (Illumina, <https://www.illumina.com>) and performed 2×100 bp sequencing on the NextSeq 500 platform (Illumina), as previously described (16). Four representative *C. jejuni* isolates also underwent whole-genome sequencing on the Pacific Biosciences, Inc., RS II platform (<https://www.pacb.com>). For this, genomic DNA was extracted from overnight cultures by using the Genelute bacterial genomic DNA kit (Sigma Aldrich). DNA libraries were prepared according to the 20 kb Template Preparation using the BluePippin DNA Size Selection system protocol (Pacific Biosciences, Inc). Sequence data are available from GenBank BioProject ID PRJNA520992 and PubMLST (<https://pubmlst.org/campylobacter>) nos. 70207–12, 70229, 70230, 70232, 70233, 70252, 70253, and 78631–845.

Genome Assembly

For processing and quality control of the Illumina reads, we used QCtool pipeline (<https://github.com/mtruglio/QCtool>). To assemble the processed reads, we used the SPAdes genome assembler version 3.12.0 (17).

Whole-Genome MLST Phylogeny

To define whole-genome MLST allelic profiles, we used Fast Genome Profiler (Fast-GeP, <https://github.com/jizhang-nz/fast-GeP>) (18) and the complete chromosome sequence of isolate 15AR0984 (generated in this study) as a reference. Phylogenetic relationships were displayed as NeighborNets by using SplitsTree 4 (19). The whole-genome polymorphic sites–based phylogeny was inferred from the concatenated sequences of the coding sequences shared by all the whole-genome sequences. We predicted and eliminated all regions with elevated densities of base substitutions and reconstructed the phylogenetic relationship of the remaining recombination-free sequences by using Gubbins version 2.3.4 with the default settings (20). We further examined the relationship by using the 1,343 genes in the *C. jejuni* core-genome MLST scheme version 1.0 (21) on the *Campylobacter* PubMLST website (<https://pubmlst.org/campylobacter>).

Single-Nucleotide Polymorphism Phylogeny

We mapped 227 genomes to complete chromosome reference 15AR0984 (completed with PacBio sequencing, <https://www.pacb.com>) by using Snippy version 4.3.5 with mincov (the minimum number of reads covering a site to be considered) of 10 and minfrac (the minimum proportion of those reads that must differ from the reference) of 0.9 (<https://github.com/tseemann/snippy>). We filtered the resulting single-nucleotide polymorphism (SNP) alignment

for recombination by using Gubbins (20), allowing for 50 iterations and specifying the weighted Robinson-Foulds convergence method. We extracted core SNPs by using SNP sites (22), giving a final total of 70 SNPs in the core genome. We then used the filtered alignment as input for IQtree (23,24) along with a general time reversible plus gamma 4 model, constant sites (606841, 268757, 264881, 606654), ultrafast bootstrapping with 1,000 replicates, and the SH-aLRT parameter with 1,000 bootstrap replicates to infer phylogenetic structure. We visualized the phylogeny in R (<https://www.r-project.org>) by using the package *ggtree* (25). We investigated pairwise SNP distances by using HarrietR (<https://github.com/andersgs/harrietr>). We visualized the recombination regions detected in the 227 genomes from Gubbins (20) by using Phandango (26) and annotated the reference chromosome 15AR0984 using Prokka version 1.13 (27).

Comparative Genomics of Mobile Elements

The reference genome 15AR0984 contained a plasmid (15AR0984-m) that was 43,680-bp long. We calculated the likelihood of this plasmid and other chromosomally integrated mobile elements being in each of the 227 genomes by using a method described previously (28). We considered the mobile elements CJIE1, CJIE2, CJIE3, and CJIE4 from the reference genome RM1221 (29) and a variant of CJIE1, named CJIE1v, which was also present in the reference genome 15AR0984. We plotted these data against the inferred phylogenetic tree in R by using *ggtree* (25). We examined the locations of chromosomally integrated mobile elements in the 4 PacBio complete genomes (15AR0984, 15AR0917, 15AR0919, and 15AR1555) and the reference strain RM1221 by using Mauve (30) and BLAST Ring Image Generator (31).

To find closely related plasmids to 15AR0984-m, we used the complete sequence as a query to BLAST (<https://blast.ncbi.nlm.nih.gov/Blast.cgi>) against the GenBank Nucleotide collection (nr/nt) database. We performed phylogenetic analyses of the most similar plasmids (Appendix Table 1) by using the whole-genome MLST method described and using the 15AR0984-m plasmid as the reference and presented as a NeighborNet using SplitsTree (19).

Results

Rapid Emergence of *C. jejuni* ST-6964 in Humans and Poultry

C. jejuni ST6964 with dual resistance to ciprofloxacin and tetracycline was first identified through sentinel surveillance in May 2014 in 2 retail poultry carcasses sampled in Palmerston North, Manawatu, New Zealand. The only other members of CC354 identified in the country to date are at least 2 locus variants of ST6964, according to the 7-gene

MLST scheme, and only 1 other ST-6964 isolate has been reported outside of New Zealand, originating from China (<https://pubmlst.org/campylobacter>).

By July 2014, *C. jejuni* ST6964 had been identified in 3 poultry companies, and by August 2014, the first human case was observed at the sentinel site. A total of 3 (1.8%) of 165 human cases at the sentinel site were identified as being caused by ST6964 in 2014 and 4 (3.3%) of 122 human cases in 2015. A total of 10 (13.9%) of 72 retail poultry carcasses at the sentinel site were positive for ST6964 in 2014 and 25 (34.7%) of 72 in 2015. A total of 41 isolates from unique samples (7 human and 34 poultry) from the sentinel site underwent whole-genome sequencing and were included in this study.

In light of findings from the sentinel site, ESR conducted a national survey of antimicrobial-resistant *C. jejuni* in human patients in New Zealand during May–October 2015 (10). A total of 297 isolates were referred from 5 clinical laboratories: 3 in the North Island and 2 in the South Island. This survey provided 22 of the *C. jejuni* ST6964 isolates included in this study; 21 were from patients in the North Island and 1 was from a patient in the South Island. In addition to the survey, another 28 isolates from human patients on the North Island were included in this study from samples submitted directly to ESR from diagnostic laboratories.

To assess the extent of spread of *C. jejuni* ST6964 in poultry, we undertook 2 systematic surveys of poultry carcasses from slaughter plants servicing poultry companies A–D. Only samples from companies A, B, and C, which

are based in the North Island, were positive for this ST; these companies accounted for 136 of the isolates included in this study.

All sequenced *C. jejuni* ST6964 isolates were confirmed as phenotypically resistant to ciprofloxacin and tetracycline. All tetracycline-resistant ST6964 isolates harbored the *tetO* gene, which was located at a previously described insertion site, between the *kdsB* and *CJE0905* genes (32). The C257T (Thr86Ile) mutation in *gyrA*, associated with fluoroquinolone resistance (33), was present in all ciprofloxacin-resistant isolates.

Relationship between Core Genomes of *C. jejuni* ST6964 from Humans and Poultry

We used 3 complementary approaches to assess relatedness of human and poultry isolates: whole-genome MLST using Fast-GeP (18), core-genome MLST using the *Campylobacter* PubMLST scheme (21), and SNP-based phylogeny. Fast-GeP analysis found 1,363 complete coding sequences that were single copy and shared by all 227 isolates. Most of the loci were identical across isolates ($n = 1,163$ loci), and NeighborNet distances and a NeighborNet network revealed 2 clades, 1 associated with poultry companies A and B and 1 with company C. A similar relationship was evident after removal of hypothetical recombination regions (Figure 1; Appendix Table 2). A similar NeighborNet profile and distribution among poultry companies resulted from the core-genome MLST results (Appendix Figure 2); 954 of the loci were identical and 389 were polymorphic.

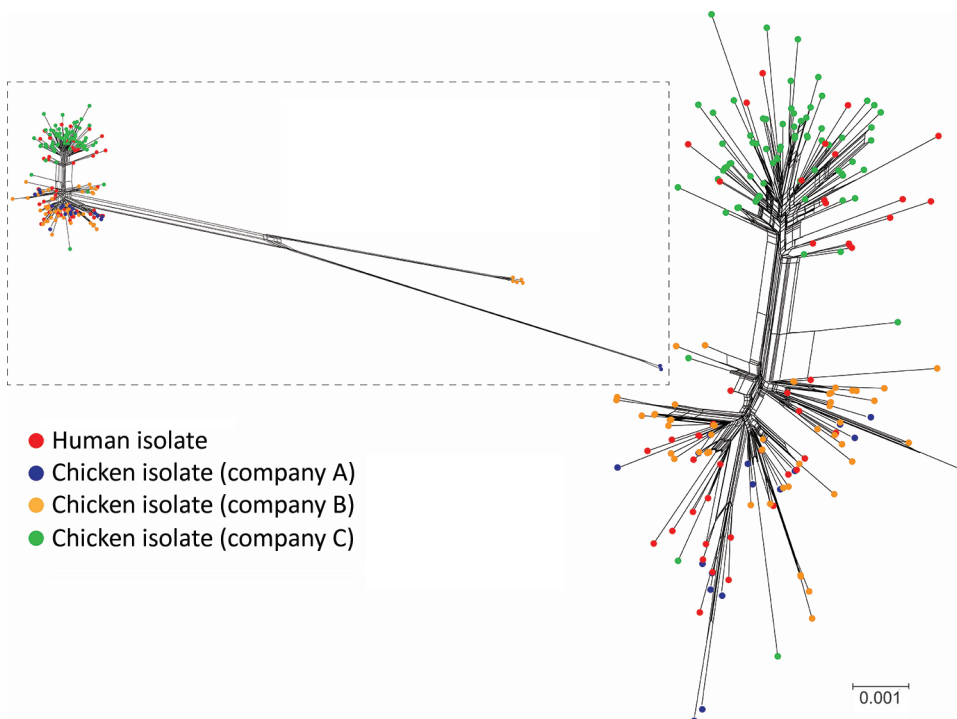


Figure 1. NeighborNet phylogenies generated from the allele profiles identified in the whole-genome multilocus sequence typing analysis of 227 sequence type 6964 *Campylobacter jejuni* isolates from humans and poultry, New Zealand, 2014–2016. The corrected NeighborNet network was generated after eliminating the 87 loci that were identified in predicted recombinant regions (Appendix Table 1, <https://wwwnc.cdc.gov/EID/article/25/12/19-0267-App1.pdf>). Inset shows the uncorrected NeighborNet network, generated with the original 1,363-loci allele profiles. Scale bar indicates the whole-genome multilocus sequence typing distance, which represents the number of allelic differences per shared locus.

We constructed an SNP-based phylogeny after removal of recombinant regions (Figure 2) and identified recombinant block and associated genes (Appendix Table 1, Figure 3). We found a maximum of 13 SNPs between any single pair of isolates in the 70 shared-SNP loci present in non-recombinant regions. The lower genetic diversity between isolates in the SNP analysis compared with the allele-based analysis was attributable to the removal of insertion and deletion mutations and loci subject to recombination. In the SNP analysis, isolates were again segregated into distinct clades strongly associated with poultry companies and carriage of mobile elements (Figure 2). Isolates from humans admixed with isolates from poultry in all clades, suggesting that the human infections were linked to poultry from all supply companies.

Plasmid Sequences Associated with Distinct ST6964 Lineages

We identified high mobile element likelihood scores (>90) for plasmid 15AR0984-m in 131 (58%) of the isolates. Plasmid sequences were strongly associated with the core phylogeny and 2 of the 3 poultry companies, A and B (Figure 2). Plasmid 15AR0984-m showed high sequence and structural similarities with other previously described *tetO* carrying pTet plasmids and shares the same backbone as *tetO* plasmids pcjDM, S3, and pRM4661 (Figure 3; Appendix Table 1, Figure 4).

The plasmid 15AR0984-m was most closely related to the *tetO* megaplasmid pcjDM (Appendix Figure 4), which also contains a prophage (34) that shows sequence homology with integrated elements found in multiple ST6964

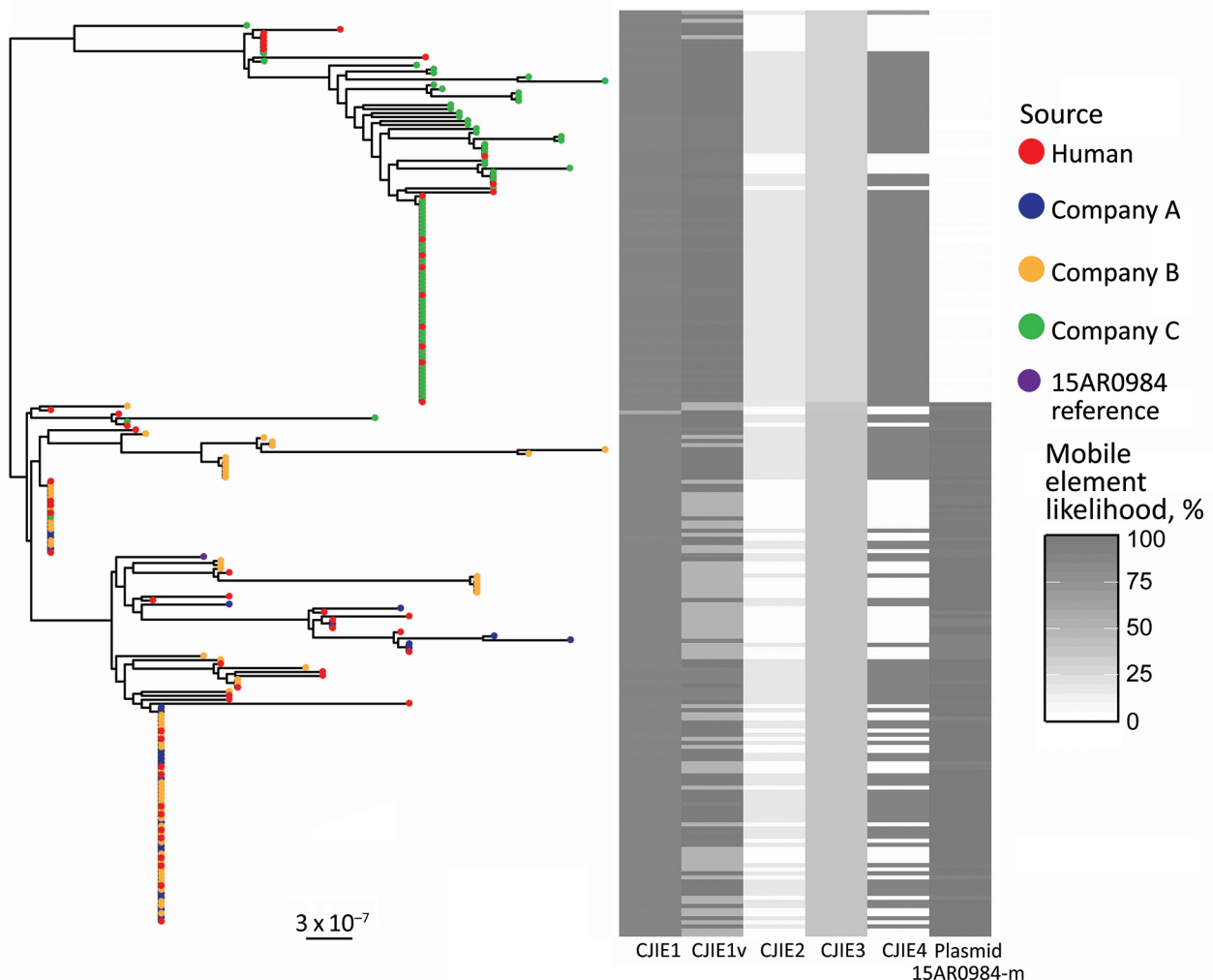


Figure 2. Population structure of 227 sequence type 6964 *Campylobacter jejuni* isolates from humans and poultry, New Zealand, 2014–2016. The tree is the inferred midpoint rooted phylogeny of the isolates, including the reference 15AR0984 genome. The tips are colored by source of the *C. jejuni* isolate. The heatmap indicates the likelihoods of the presence of mobile elements including CJIE1 variant (cjie1_15AR0984), CJIEs 1–4, and the plasmid 15AR0984-m. Dark shading on the heatmap indicates 100% likelihood; white indicates absence. Scale bar indicates nucleotide substitutions per site.

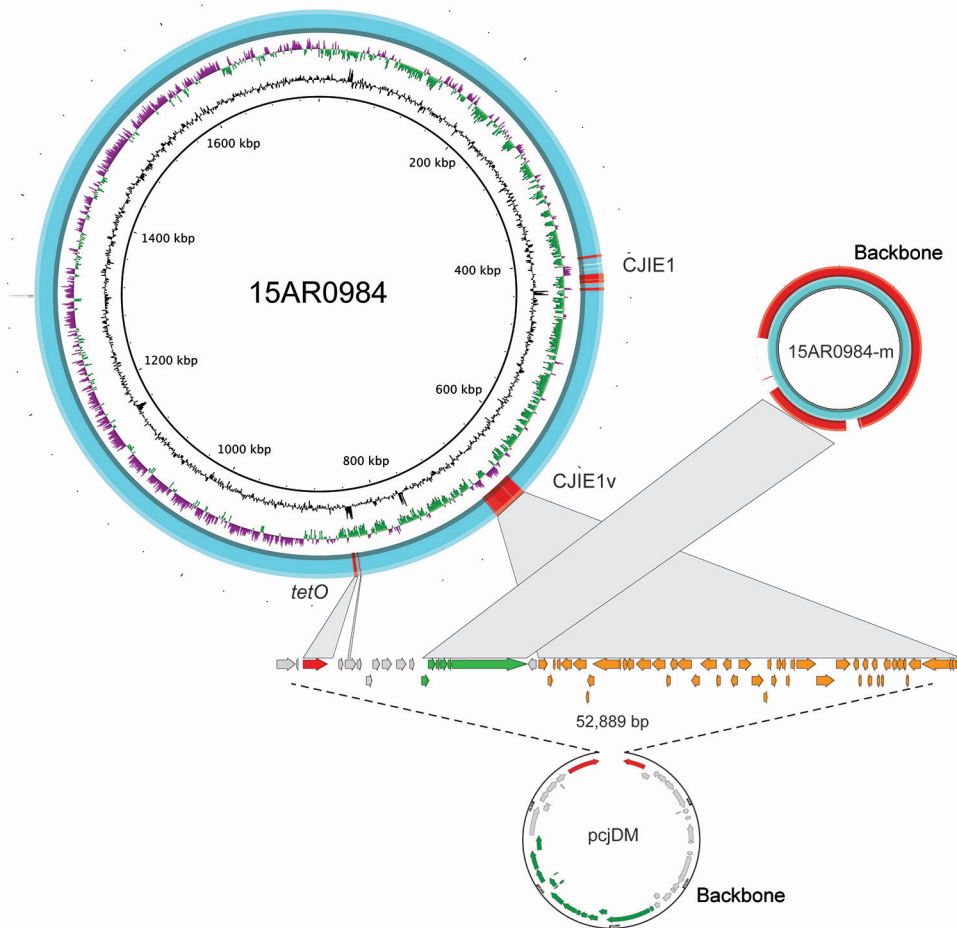


Figure 3. Genome structures of the complete *Campylobacter jejuni* strain 15AR0984 chromosome and plasmid (15AR0984-m) isolated from humans and poultry, New Zealand, 2014–2016, compared with the closest plasmid (pcjDM) sequence found in GenBank. High-scoring segment pairs between the 15AR0984 genome and the plasmid pcjDM were connected with gray bars to illustrate the similar shared regions except for the backbone regions, which were highly conserved across the pTet-like plasmid genomes.

isolates. These elements are labeled CJIE1 and CJIE1v (a variant of CJIE1), and the latter was most similar to the prophage in plasmid pcjDM. Both prophage integrated elements bear similarities to integrated element CJIE1 identified in *C. jejuni* isolate RM1221 (29,35). All but 1 isolate (H2239a) contained CJIE1, and all were identified at the same location in the chromosome of the 4 isolates sequenced with PacBio. In contrast, 71% (162/227) of the isolates contained CJIE1v, as did 3 of the 4 complete genomes (15AR0984, 15AR0919, and 15AR1555). Although CJIE1 was located at the same chromosomal position in all 4 complete genomes, CJIE1v was located at a different position in the chromosome of 3 of the 4 that contained this mobile element (Appendix Figure 5).

In addition to the 2 CJIE1-like elements, 65% (148/227) of genomes showed evidence of a previously described integrated element CJIE4 (29), located in the same chromosomal location in 2 of 4 complete genomes (15AR0984 and 15AR0919) and the reference genome *C. jejuni* RM1221 (29) (Appendix Figure 6). CJIE4 was identified in isolates from all poultry companies and in 26 of 57 isolates from humans. The *dns* gene (CJE0256), encoding for an extracellular

deoxyribonuclease, was carried in CJIE1 in all but 1 of our isolates (H2239a). However, none of the CJIE1v elements contained the *dns* gene (CJE0256). Although 149 of 227 *C. jejuni* ST6964 isolates carried CJIE4, none of the CJIE4 elements had the DNA/RNA nonspecific endonuclease gene (CJE1441) present in the CJIE4 element of strain RM1221.

Discussion

Data from the 4 sources, (i.e., sentinel surveillance, human case survey, direct submission of samples from humans and poultry) demonstrated rapid emergence of a resistant lineage of *C. jejuni* among isolates from humans and poultry in New Zealand from 2014 on, indicating how rapidly national levels of resistance can change through the introduction of a successful bacterial clone. Despite high rates of campylobacteriosis in New Zealand, rates of *C. jejuni* antimicrobial drug resistance have been considered extremely low; during 2000–2013, prevalence of fluoroquinolone resistance in *Campylobacter* spp. isolated from humans was reportedly <6% (36). During 2005–2006, no resistance to tetracyclines or fluoroquinolones was found in 193 *C. jejuni* isolates from poultry (37); a 2009 systematic survey of

antimicrobial drug resistance in animal (calves and poultry) isolates of *C. jejuni* found no resistance to erythromycin, 0.3% resistance to tetracycline, and only 2.3% resistance to fluoroquinolones (38). The emergence of this lineage is unlikely to be the result of fluoroquinolone use in the food chain because the poultry industry in New Zealand does not use fluoroquinolones (39,40).

Our data demonstrate the utility of systematic phenotypic surveillance of antimicrobial drug resistance in *C. jejuni*, which is becoming increasingly necessary as laboratories adopt routine culture-independent diagnostic testing for enteric pathogens. The use of phenotypic surveillance is particularly relevant for *Campylobacter*, for which culture-independent diagnostic testing is replacing culture-based diagnosis in many settings (41,42). Although recent whole-genome sequencing-based work demonstrated good concordance between antimicrobial-resistance genotype and phenotype in *Campylobacter* spp. (43), uncharacterized mutations are unlikely to be detected and isolates are still required for whole-genome sequencing analysis. To ensure ongoing culture capability and the capacity to undertake periodic phenotypic antimicrobial-resistance testing, close liaison between clinical and public health laboratories is needed.

Both the *tetO* gene and the prophage-integrated element CJIE1v may have originated on the remnant plasmid and been inserted into the genome of ST6964. One possible scenario is that the common ancestor of ST6964 acquired a plasmid similar to megaplasmid pcjDM, which carried the *tetO* gene and a phage. Under this scenario, the *tetO* gene was then inserted into the genome at a single site and the phage element was inserted into multiple sites, leaving the remnant plasmid with the backbone minus the *tetO* and CJIE1v sequences. We propose that the remnant plasmid was then lost from a common ancestor of isolates in poultry company C (Figure 3).

Although the *tetO* flanking genes in the chromosome differ from the *tetO* cargo in megaplasmid pcjDM, evidence that these came from the plasmid comes from isolate 15AR1747, which contains additional chromosomal genes adjacent to the *tetO* sequence that are identical to those found in the remnant plasmid of all other plasmid-bearing *C. jejuni* ST6964 isolates. Furthermore, these genes are absent from the smaller remnant plasmid identified in 15AR1747 (Appendix Figure 6).

Both CJIE1 and CJIE4 are prophages (29). CJIE1 has been associated with increased adherence and invasion (44) and differences in protein expression under different conditions (45). The multiple locations of prophage-integrated element CJIE1 has been identified in previous studies (29). Previous studies have shown that both CJIE1 and CJIE4 encode nucleases that hydrolyze DNA and inhibit natural transformation (46,47). Prophage-integrated elements in addition to the plasmid may have played some role in the evolution of ST6964 in New Zealand, potentially

stabilizing lineages by reducing transformability (47); however, what may have influenced their frequency and distribution among poultry companies and hosts is unclear.

Conclusions

The emergence of antimicrobial-drug resistant *C. jejuni* ST6964 in New Zealand poultry and transmission to humans via the food chain underlines the role of the fresh poultry supply as a source of human cases of campylobacteriosis and how rapidly new clones can evolve and spread. We provide evidence that this clone has undergone rapid evolution in New Zealand through multiple mechanisms, including mutations/substitutions, conjugation, natural transformation, and the incorporation of prophages into the chromosome. Given its speed of emergence and its spread across vertically integrated poultry companies, it is imperative that ongoing periodic surveillance of antimicrobial drug resistance in *Campylobacter* and other relevant bacterial pathogens is supported by government agencies to better track the emergence and possible further spread of resistance in New Zealand. This surveillance includes gathering information at the farm level to determine the relative roles of different transmission pathways that could account for spread within and between poultry companies.

Ongoing work indicates that *C. jejuni* ST6964 is persisting in the poultry supply and continuing to make a considerable contribution to the country's disease burden. This finding has implications for the use of antimicrobial drugs; for example, fluoroquinolones are likely to be ineffective for treatment of severe and invasive campylobacteriosis. To control and mitigate the spread of this clone, appropriate source control measures and increased public awareness of appropriate food hygiene should be considered by the government and the poultry industry, along with the development of rapid, less costly diagnostic assays, which could be facilitated by data derived from whole-genome sequencing.

Acknowledgments

We thank Donald Campbell, Helen Heffernan, Dieter Bulach, and Anders Gonçalves da Silva for their help with this manuscript.

Funding was provided by the Ministry of Health, New Zealand; the Ministry for Primary Industries, New Zealand; and the Poultry Industry Association of New Zealand.

About the Author

Dr. French is chief scientist of the New Zealand Food Safety Science and Research Centre and chair of Food Safety and Veterinary Public Health at Massey University, New Zealand. He is also co-director of One Health Aotearoa and executive director of the Infectious Disease Research Centre at Massey University.

References

1. Kaakoush NO, Castaño-Rodríguez N, Mitchell HM, Man SM. Global epidemiology of *Campylobacter* infection. *Clin Microbiol Rev.* 2015;28:687–720. <https://doi.org/10.1128/CMR.00006-15>
2. Sproston EL, Wimalaratna HML, Sheppard SK. Trends in fluoroquinolone resistance in *Campylobacter*. *Microb Genom.* 2018;4. <https://doi.org/10.1099/mgen.0.000198>
3. The Institute of Environmental Science and Research Ltd. Notifiable diseases in New Zealand: annual report 2017 [cited 2019 Oct 9]. https://surv.esr.cri.nz/surveillance/annual_surveillance.php
4. Sears A, Baker MG, Wilson N, Marshall J, Mueller P, Campbell DM, et al. Marked campylobacteriosis decline after interventions aimed at poultry, New Zealand. *Emerg Infect Dis.* 2011;17:1007–15. <https://doi.org/10.3201/eid1706.101272>
5. Müllner P, Collins-Emerson JM, Midwinter AC, Carter P, Spencer SE, van der Logt P, et al. Molecular epidemiology of *Campylobacter jejuni* in a geographically isolated country with a uniquely structured poultry industry. *Appl Environ Microbiol.* 2010;76:2145–54. <https://doi.org/10.1128/AEM.00862-09>
6. McTavish SM, Pope CE, Nicol C, Sexton K, French N, Carter PE. Wide geographical distribution of internationally rare *Campylobacter* clones within New Zealand. *Epidemiol Infect.* 2008;136:1244–52. <https://doi.org/10.1017/S0950268807009892>
7. Mullner P, Spencer SEF, Wilson DJ, Jones G, Noble AD, Midwinter AC, et al. Assigning the source of human campylobacteriosis in New Zealand: a comparative genetic and epidemiological approach. *Infect Genet Evol.* 2009;9:1311–9. <https://doi.org/10.1016/j.meegid.2009.09.003>
8. Sheppard SK, Cheng L, Méric G, de Haan CP, Llárena A-K, Martinen P, et al. Cryptic ecology among host generalist *Campylobacter jejuni* in domestic animals. *Mol Ecol.* 2014;23:2442–51. <https://doi.org/10.1111/mec.12742>
9. Bolwell CF, Gilpin BJ, Campbell D, French NP. Evaluation of the representativeness of a sentinel surveillance site for campylobacteriosis. *Epidemiol Infect.* 2015;143:1990–2002. <https://doi.org/10.1017/S0950268814003173>
10. Williamson D, Dyet K, Heffernan H. Antimicrobial resistance in human isolates of *Campylobacter jejuni*, 2015 [cited 2019 Oct 9]. https://surv.esr.cri.nz/PDF_surveillance/Antimicrobial/CAMPY/CampyFQRfinalreport2015.pdf
11. Nohra A, Grinberg A, Midwinter AC, Marshall JC, Collins-Emerson JM, French NP. Molecular epidemiology of *Campylobacter coli* strains isolated from different sources in New Zealand between 2005 and 2014. *Appl Environ Microbiol.* 2016;82:4363–70. <https://doi.org/10.1128/AEM.00934-16>
12. Wang G, Clark CG, Taylor TM, Pucknell C, Barton C, Price L, et al. Colony multiplex PCR assay for identification and differentiation of *Campylobacter jejuni*, *C. coli*, *C. lari*, *C. upsaliensis*, and *C. fetus* subsp. *fetus*. *J Clin Microbiol.* 2002;40:4744–7. <https://doi.org/10.1128/JCM.40.12.4744-4747.2002>
13. Clinical and Laboratory Standards Institute. Methods for antimicrobial dilution and disk susceptibility testing of infrequently isolated or fastidious bacteria, 3rd edition (M45). Wayne (PA): The Institute; 2016.
14. The European Committee on Antimicrobial Susceptibility Testing. Breakpoint tables for interpretation of MICs and zone diameters. Version 5.0. 2015 [cited 2018 Oct 10]. http://www.eucast.org/fileadmin/src/media/PDFs/EUCAST_files/Breakpoint_tables/v_5.0_Breakpoint_Table_01.pdf
15. Dingle KE, McCarthy ND, Cody AJ, Peto TE, Maiden MC. Extended sequence typing of *Campylobacter* spp., United Kingdom. *Emerg Infect Dis.* 2008;14:1620–2. <https://doi.org/10.3201/eid1410.071109>
16. Baines SL, Howden BP, Heffernan H, Stinear TP, Carter GP, Seemann T, et al. Rapid emergence and evolution of *Staphylococcus aureus* clones harboring *fusC*-containing staphylococcal cassette chromosome elements. *Antimicrob Agents Chemother.* 2016;60:2359–65. <https://doi.org/10.1128/AAC.03020-15>
17. Bankevich A, Nurk S, Antipov D, Gurevich AA, Dvorkin M, Kulikov AS, et al. SPAdes: a new genome assembly algorithm and its applications to single-cell sequencing. *J Comput Biol.* 2012;19:455–77. <https://doi.org/10.1089/cmb.2012.0021>
18. Zhang J, Xiong Y, Rogers L, Carter GP, French N. Genome-by-genome approach for fast bacterial genealogical relationship evaluation. *Bioinformatics.* 2018;34:3025–7. <https://doi.org/10.1093/bioinformatics/bty195>
19. Huson DH, Bryant D. Application of phylogenetic networks in evolutionary studies. *Mol Biol Evol.* 2006;23:254–67. <https://doi.org/10.1093/molbev/msj030>
20. Croucher NJ, Page AJ, Connor TR, Delaney AJ, Keane JA, Bentley SD, et al. Rapid phylogenetic analysis of large samples of recombinant bacterial whole genome sequences using Gubbins. *Nucleic Acids Res.* 2015;43:e15. <https://doi.org/10.1093/nar/gku1196>
21. Cody AJ, Bray JE, Jolley KA, McCarthy ND, Maiden MCJ. Core genome multilocus sequence typing scheme for stable, comparative analyses of *Campylobacter jejuni* and *C. coli* human disease isolates. *J Clin Microbiol.* 2017;55:2086–97. <https://doi.org/10.1128/JCM.00080-17>
22. Page AJ, Taylor B, Delaney AJ, Soares J, Seemann T, Keane JA, et al. *SNP-sites*: rapid efficient extraction of SNPs from multi-FASTA alignments. *Microb Genom.* 2016;2:e000056. <https://doi.org/10.1099/mgen.0.000056>
23. Nguyen LT, Schmidt HA, von Haeseler A, Minh BQ. IQ-TREE: a fast and effective stochastic algorithm for estimating maximum-likelihood phylogenies. *Mol Biol Evol.* 2015;32:268–74. <https://doi.org/10.1093/molbev/msu300>
24. Minh BQ, Nguyen MA, von Haeseler A. Ultrafast approximation for phylogenetic bootstrap. *Mol Biol Evol.* 2013;30:1188–95. <https://doi.org/10.1093/molbev/mst024>
25. Yu G, Lam TT, Zhu H, Guan Y. Two methods for mapping and visualizing associated data on phylogeny using *ggtree*. *Mol Biol Evol.* 2018;35:3041–3. <https://doi.org/10.1093/molbev/msy194>
26. Hadfield J, Croucher NJ, Goater RJ, Abudahab K, Aanensen DM, Harris SR. Phandango: an interactive viewer for bacterial population genomics. *Bioinformatics.* 2017. [Epub ahead of print].
27. Seemann T. Prokka: rapid prokaryotic genome annotation. *Bioinformatics.* 2014;30:2068–9. <https://doi.org/10.1093/bioinformatics/btu153>
28. Llárena A-K, Zhang J, Vehkala M, Välimäki N, Hakkinen M, Hänninen M-L, et al. Monomorphic genotypes within a generalist lineage of *Campylobacter jejuni* show signs of global dispersion. *Microb Genom.* 2016;2:e000088. <https://doi.org/10.1099/mgen.0.000088>
29. Parker CT, Quiñones B, Miller WG, Horn ST, Mandrell RE. Comparative genomic analysis of *Campylobacter jejuni* strains reveals diversity due to genomic elements similar to those present in *C. jejuni* strain RM1221. *J Clin Microbiol.* 2006;44:4125–35. <https://doi.org/10.1128/JCM.01231-06>
30. Darling AC, Mau B, Blattner FR, Perna NT. Mauve: multiple alignment of conserved genomic sequence with rearrangements. *Genome Res.* 2004;14:1394–403. <https://doi.org/10.1101/gr.2289704>
31. Alikhan NF, Petty NK, Ben Zakour NL, Beatson SA. BLAST Ring Image Generator (BRIG): simple prokaryote genome comparisons. *BMC Genomics.* 2011;12:402. <https://doi.org/10.1186/1471-2164-12-402>
32. Poly F, Read TD, Chen YH, Monteiro MA, Serichantalergs O, Pootong P, et al. Characterization of two *Campylobacter jejuni* strains for use in volunteer experimental-infection studies. *Infect Immun.* 2008;76:5655–67. <https://doi.org/10.1128/IAI.00780-08>
33. Wang Y, Huang WM, Taylor DE. Cloning and nucleotide sequence of the *Campylobacter jejuni gyrA* gene and characterization of quinolone resistance mutations. *Antimicrob Agents Chemother.* 1993;37:457–63. <https://doi.org/10.1128/AAC.37.3.457>
34. Marasini D, Fakhr MK. Whole-genome sequencing of a *Campylobacter jejuni* strain isolated from retail chicken meat

- reveals the presence of a megaplasmid with Mu-like prophage and multidrug resistance genes. *Genome Announc.* 2016;4:e00460-16. <https://doi.org/10.1128/genomeA.00460-16>
35. Fouts DE, Mongodin EF, Mandrell RE, Miller WG, Rasko DA, Ravel J, et al. Major structural differences and novel potential virulence mechanisms from the genomes of multiple *Campylobacter* species. *PLoS Biol.* 2005;3:e15. <https://doi.org/10.1371/journal.pbio.0030015>
 36. The Institute of Environmental Science and Research Ltd. General antimicrobial susceptibility data collected from hospital and community laboratories [cited 2018 Aug 1]. https://surv.esr.cri.nz/antimicrobial/general_antimicrobial_susceptibility.php
 37. Pleydell EJ, Rogers L, Kwan E, French NP. Low levels of antibacterial drug resistance expressed by Gram-negative bacteria isolated from poultry carcasses in New Zealand. *N Z Vet J.* 2010;58:229–36. <https://doi.org/10.1080/00480169.2010.69297>
 38. Heffernan H, Wong T, Lindsay J, Bowen B, Woodhouse R. A baseline survey of antimicrobial resistance in bacteria from selected New Zealand foods, 2009–2010 [cited 2019 Oct 9]. <https://www.mpi.govt.nz/dmsdocument/21464-a-baseline-survey-of-antimicrobial-resistance-in-bacteria-from-selected-new-zealand-foods-2009-2010>
 39. New Zealand Food Safety. Antibiotic sales analysis 2014–2016. Technical paper no. 2018/08 [cited 2019 Oct 9]. <https://www.fisheries.govt.nz/dmsdocument/31920/direct>
 40. Ministry for Primary Industries. 2011–2014 Antibiotic Sales Analysis. MPI technical paper no. 2016/65 [cited 2019 Oct 9]. <https://www.mpi.govt.nz/dmsdocument/14497-2011-2014-antibiotic-sales-analysis>
 41. Huang JY, Henao OL, Griffin PM, Vugia DJ, Cronquist AB, Hurd S, et al. Infection with pathogens transmitted commonly through food and the effect of increasing use of culture-independent diagnostic tests on surveillance—Foodborne Diseases Active Surveillance Network, 10 U.S. Sites, 2012–2015. *MMWR Morb Mortal Wkly Rep.* 2016;65:368–71. <https://doi.org/10.15585/mmwr.mm6514a2>
 42. May FJ, Stafford RJ, Carroll H, Robson JM, Vohra R, Nimmo GR, et al. The effects of culture independent diagnostic testing on the diagnosis and reporting of enteric bacterial pathogens in Queensland, 2010 to 2014. *Commun Dis Intell Q Rep.* 2017;41:E223–30.
 43. Whitehouse CA, Young S, Li C, Hsu CH, Martin G, Zhao S. Use of whole-genome sequencing for *Campylobacter* surveillance from NARMS retail poultry in the United States in 2015. *Food Microbiol.* 2018;73:122–8. <https://doi.org/10.1016/j.fm.2018.01.018>
 44. Clark CG, Grant CC, Pollari F, Marshall B, Moses J, Tracz DM, et al. Effects of the *Campylobacter jejuni* CJIE1 prophage homologs on adherence and invasion in culture, patient symptoms, and source of infection. *BMC Microbiol.* 2012;12:269. <https://doi.org/10.1186/1471-2180-12-269>
 45. Clark CG, Chong PM, McCorrister SJ, Simon P, Walker M, Lee DM, et al. The CJIE1 prophage of *Campylobacter jejuni* affects protein expression in growth media with and without bile salts. *BMC Microbiol.* 2014;14:70. <https://doi.org/10.1186/1471-2180-14-70>
 46. Gaasbeek EJ, Wagenaar JA, Guilhabert MR, van Putten JP, Parker CT, van der Wal FJ. Nucleases encoded by the integrated elements CJIE2 and CJIE4 inhibit natural transformation of *Campylobacter jejuni*. *J Bacteriol.* 2010;192:936–41. <https://doi.org/10.1128/JB.00867-09>
 47. Gaasbeek EJ, Wagenaar JA, Guilhabert MR, Wösten MM, van Putten JP, van der Graaf-van Bloois L, et al. A DNase encoded by integrated element CJIE1 inhibits natural transformation of *Campylobacter jejuni*. *J Bacteriol.* 2009;191:2296–306. <https://doi.org/10.1128/JB.01430-08>

Address for correspondence: Nigel P. French, Massey University, New Zealand Food Safety Science and Research Centre, Hopkirk Institute, Palmerston North 4410, New Zealand; email n.p.french@massey.ac.nz

EID podcast

Developing Biological Reference Materials to Prepare for Epidemics



Having standard biological reference materials, such as antigens and antibodies, is crucial for developing comparable research across international institutions. However, the process of developing a standard can be long and difficult.

In this EID podcast, Dr. Tommy Rampling, a clinician and academic fellow at the Hospital for Tropical Diseases and University College in London, explains the intricacies behind the development and distribution of biological reference materials.

Visit our website to listen:
<https://go.usa.gov/xyfJX>

**EMERGING
 INFECTIOUS DISEASES®**

Genomic Analysis of Fluoroquinolone- and Tetracycline-Resistant *Campylobacter jejuni* Sequence Type 6964 in Humans and Poultry, New Zealand, 2014–2016

Appendix

Further details of participating human diagnostic laboratories and poultry farm survey

The laboratories that referred isolates for the human case survey were Labtests, Auckland; Pathlab Bay of Plenty; Aotea Pathology, Wellington; Canterbury Southern Community Laboratories, Christchurch; and Southern Community Laboratories, Dunedin. Details of the survey are provided in the report by Williamson, Dyet (*1*).

For the poultry cecal surveys pooled cecal samples (each containing cecal contents from 5 chickens) were taken from 4 poultry companies at slaughter. One study was conducted between May 25, 2015 and June 02, 2015 and the other between July 07, 2015 and March 25, 2016. A total of 897 pooled cecal samples from broiler and breeder flocks were processed, of which 53.7% (482/897) were positive for growth typical of *Campylobacter* on selective media containing ciprofloxacin and tetracycline. Only six composite samples were received from the small Company D and none of these samples yielded growth on the mCCDA + cip/tet plates. A random subset of 291 isolates were speciated by PCR and all were confirmed as *C. jejuni*. A further subset of 99 of the 291 isolates were subtyped by 7-gene MLST and all were confirmed as ST-6964. Given the high probability that isolates cultured on the selective media were *C. jejuni* ST-6964, 136 of the 291 PCR confirmed isolates (from 118 pooled samples) were randomly selected for WGS, and all were confirmed by WGS as ST-6964 (39 by 7-gene MLST and WGS and 97 by WGS only).

A map showing the location of the participating laboratories and the poultry farms from which *C. jejuni* ST 6964 positive cecal samples were taken for analysis is shown in Appendix Figure 1.

References

1. Williamson D, Dyet K, Heffernan H. Antimicrobial resistance in human isolates of *Campylobacter jejuni*, 2015: Institute of Environmental Science and Research Limited; 2015.
2. Marasini D, Fakhr MK. Whole-genome sequencing of a *Campylobacter jejuni* strain isolated from retail chicken meat reveals the presence of a megaplasmid with Mu-like prophage and multidrug resistance genes. *Genome Announc.* 2016;4:e00460-16. [PubMed](#)
<https://doi.org/10.1128/genomeA.00460-16>
3. Marasini D, Fakhr MK. Complete genome sequences of plasmid-bearing multidrug-resistant *Campylobacter jejuni* and *Campylobacter coli* strains with type VI secretion systems, isolated from retail turkey and pork. *Genome Announc.* 2017;5:e01360-17. [PubMed](#)
<https://doi.org/10.1128/genomeA.01360-17>
4. Marasini D, Fakhr MK. Complete genome sequences of *Campylobacter jejuni* strains isolated from retail chicken and chicken gizzards. *Genome Announc.* 2017;5:e01351-17. [PubMed](#)
<https://doi.org/10.1128/genomeA.01351-17>
5. Crespo MD, Altermann E, Olson J, Miller WG, Chandrashekar K, Kathariou S. Novel plasmid conferring kanamycin and tetracycline resistance in the turkey-derived *Campylobacter jejuni* strain 11601MD. *Plasmid.* 2016;86:32–7. [PubMed](#) <https://doi.org/10.1016/j.plasmid.2016.06.001>
6. Gunther NW IV, Reichenberger ER. Complete genome sequence of *Campylobacter jejuni* RM1246-ERRC, which exhibits resistance to quaternary ammonium compounds. *Genome Announc.* 2017;5:e00978-17. [PubMed](#) <https://doi.org/10.1128/genomeA.00978-17>
7. Batchelor RA, Pearson BM, Friis LM, Guerry P, Wells JM. Nucleotide sequences and comparison of two large conjugative plasmids from different *Campylobacter* species. *Microbiology.* 2004;150:3507–17. [PubMed](#) <https://doi.org/10.1099/mic.0.27112-0>
8. Marasini D, Fakhr MK. Complete genome sequences of *Campylobacter jejuni* strains OD267 and WP2202 isolated from retail chicken livers and gizzards reveal the presence of novel 116-Kilobase and 119-Kilobase megaplasmids with type VI secretion systems. *Genome Announc.* 2016;4:e01060-16. [PubMed](#) <https://doi.org/10.1128/genomeA.01060-16>

9. Taveirne ME, Dunham DT, Perault A, Beauchamp JM, Huynh S, Parker CT, et al. Complete annotated genome sequences of three *Campylobacter jejuni* strains isolated from naturally colonized farm-raised chickens. *Genome Announc.* 2017;5:e01407-16. [PubMed](#)
<https://doi.org/10.1128/genomeA.01407-16>
10. Zhang M, He L, Li Q, Sun H, Gu Y, You Y, et al. Genomic characterization of the Guillain-Barre syndrome-associated *Campylobacter jejuni* ICDCJ07001 Isolate. *PLoS One.* 2010;5:e15060. [PubMed](#) <https://doi.org/10.1371/journal.pone.0015060>
11. Cooper KK, Cooper MA, Zuccolo A, Law B, Joens LA. Complete genome sequence of *Campylobacter jejuni* strain S3. *J Bacteriol.* 2011;193:1491–2. [PubMed](#)
<https://doi.org/10.1128/JB.01475-10>

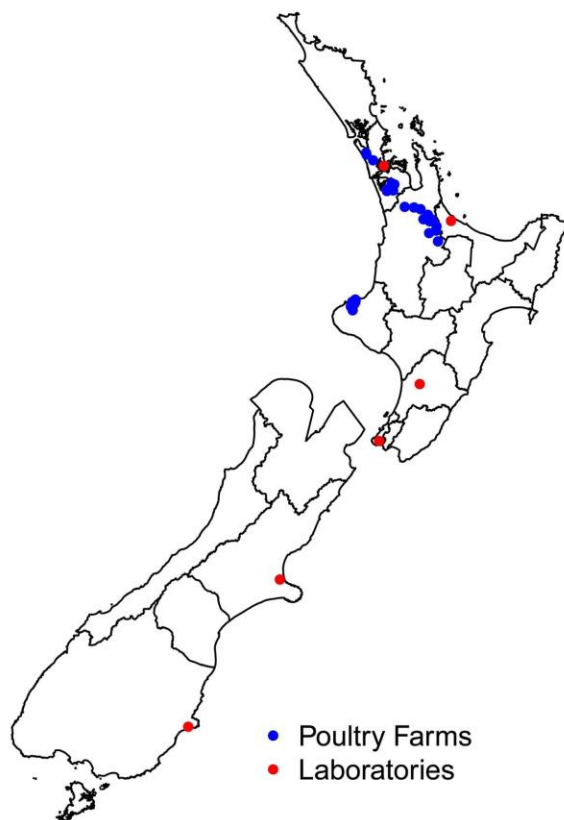
Appendix Table 1. Details of the plasmids used in the comparative analysis of plasmid 15AR0984-m from the reference strain of ST-6964 used in this study

Accession no.	Reference	Description
CP013117.1	(2)	<i>C. jejuni</i> strain T1–21 plasmid pcJDM
CP017857.1	(3)	<i>C. jejuni</i> strain YQ2210 plasmid pCJDM210L
CP017854.1	(4)	<i>C. jejuni</i> strain ZP3204 plasmid pCJDM204L
KJ646012.1	(5)	<i>C. jejuni</i> strain 11601MD plasmid p11601MD
CP022471.1	(6)	<i>C. jejuni</i> strain RM1246-ERRC plasmid pRM1246_ERRC
AY394561.1	(7)	<i>C. jejuni</i> strain 81–176 plasmid pTet
CP014745.1	(8)	<i>C. jejuni</i> strain OD267 plasmid pCJDM67 L
CP017418.1	(9)	<i>C. jejuni</i> strain MTVDSCj13 plasmid pMTVDSCj13–1
CP007750.1	Not applicable	<i>C. jejuni</i> strain M129 plasmid pTet-M129
CP007182.1	Not applicable	<i>C. coli</i> strain RM4661 plasmid pRM4661
CP002030.1	(10)	<i>C. jejuni</i> strain ICDCJ07001 plasmid pTet
CP001961.1	(11)	<i>C. jejuni</i> strain S3 plasmid pTet

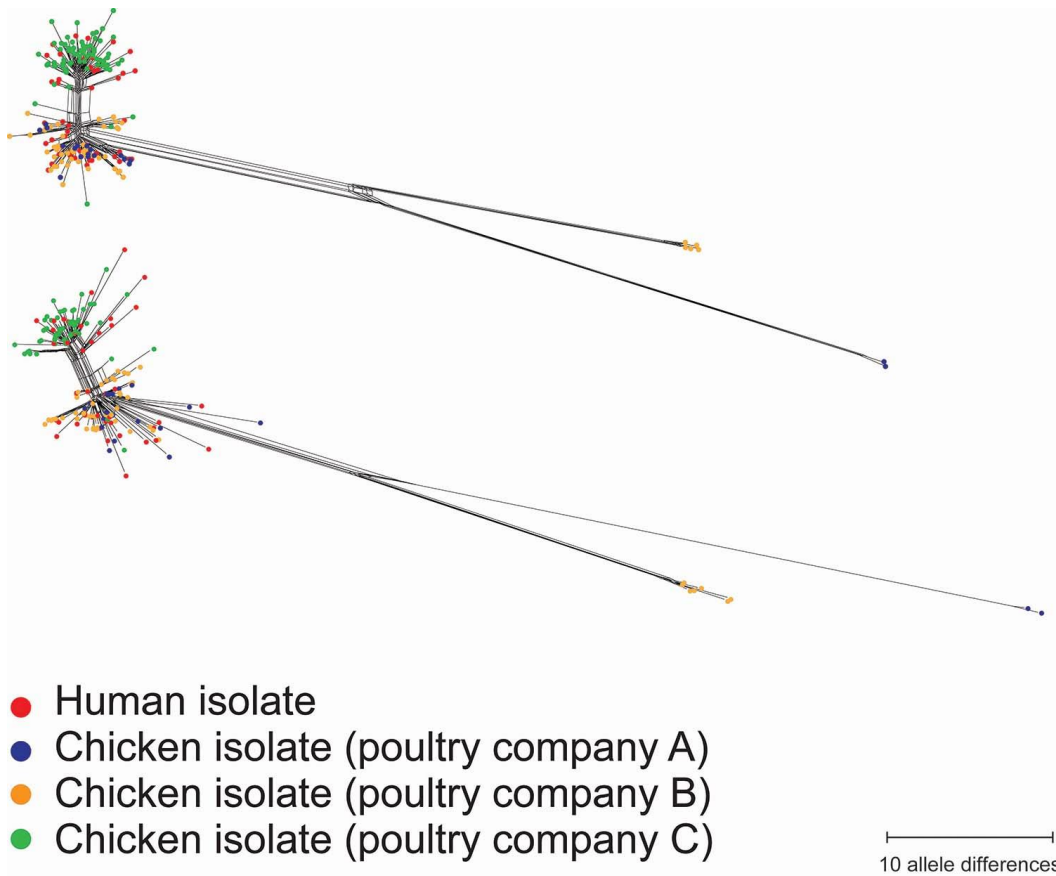
Appendix Table 2. The 87 wgMLST shared-loci that were within the Gubbins predicted recombination regions. The aliases in the first column correspond to the gene names used in the wgMLST analysis.

Alias	Gene	Function	Locus tag
Gene577		Hypothetical protein	15AR0984_00592
Gene1430		Peptidylprolyl isomerase	15AR0984_01465
Gene1431	<i>accC</i>	Biotin carboxylase	15AR0984_01466
Gene1432	<i>accB</i>	Biotin carboxyl carrier protein of acetyl-coa carboxylase	15AR0984_01467
Gene1433	<i>dcd</i>	Deoxycytidine triphosphate deaminase	15AR0984_01468
Gene1434	<i>pseB</i>	UDP-N-acetylglucosamine 4,6-dehydratase (inverting)	15AR0984_01469
Gene1435	<i>pseC</i>	UDP-4-amino-4, 6-dideoxy-N-acetyl-β-L-altrosamine transaminase	15AR0984_01470
Gene1437		Putative polysaccharide biosynthesis protein with aminopeptidase-like domain protein	15AR0984_01472
Gene1441		Hypothetical protein	15AR0984_01476
Gene1442	<i>fabH</i>	3-oxoacyl-[acyl-carrier-protein] synthase 3	15AR0984_01477
Gene1443		Hypothetical protein	15AR0984_01478
Gene1444		Hypothetical protein	15AR0984_01479
Gene1445		Hypothetical protein	15AR0984_01480
Gene1449		Hypothetical protein	15AR0984_01484
Gene1454	<i>legF</i>	CMP-N,N'-diacetyllegionaminic acid synthase	15AR0984_01489
Gene1455	<i>pseG</i>	UDP-2,4-diacetamido-2,4, 6-trideoxy-β-L-altropyranose hydrolase	15AR0984_01490
Gene1456	<i>pseH</i>	UDP-4-amino-4, 6-dideoxy-N-acetyl-β-L-altrosamine N-acetyltransferase	15AR0984_01491
Gene1457	<i>hisF</i>	Imidazole glycerol phosphate synthase subunit hisf	15AR0984_01492
Gene1458	<i>hisH1</i>	Imidazole glycerol phosphate synthase subunit hish 1	15AR0984_01493
Gene1459		Hypothetical protein	15AR0984_01494
Gene1461	<i>rmlB</i>	Dtdp-glucose 4,6-dehydratase	15AR0984_01496
Gene1464	<i>legI</i>	N,N'-diacetyllegionaminic acid synthase	15AR0984_01499
Gene1469	<i>hddC</i>	D-glycero-α-D-manno-heptose 1-phosphate guanylyltransferase	15AR0984_01504
Gene1470		Hypothetical protein	15AR0984_01505
Gene1471	<i>legF</i>	CMP-N,N'-diacetyllegionaminic acid synthase	15AR0984_01506
Gene1472	<i>lvr</i>	Levodione reductase	15AR0984_01507
Gene1476		Hypothetical protein	15AR0984_01511
Gene1481		Hypothetical protein	15AR0984_01516
Gene1482		Hypothetical protein	15AR0984_01517
Gene1483	<i>xcpT</i>	Type II secretion system protein G	15AR0984_01518
Gene1484	<i>tsaD</i>	Trna N6-adenosine threonylcarbamoyltransferase	15AR0984_01519
Gene1486	<i>dxr</i>	1-deoxy-D-xylulose 5-phosphate reductoisomerase	15AR0984_01521
Gene1487	<i>cdsA</i>	Phosphatidate cytidyltransferase	15AR0984_01522
Gene1488		Hypothetical protein	15AR0984_01523
Gene1489		Hypothetical protein	15AR0984_01524
Gene1491		Putative phospholipase A1	15AR0984_01526
Gene1492	<i>feuB</i>	Iron-uptake system permease protein feub	15AR0984_01527
Gene1493	<i>feuC</i>	Iron-uptake system permease protein feuc	15AR0984_01528
Gene1494	<i>fhuC</i>	Iron(3+)-hydroxamate import ATP binding protein fhuc	15AR0984_01529
Gene1496		Hypothetical protein	15AR0984_01532
Gene1497	<i>nrfA</i>	Cytochrome c-552	15AR0984_01533
Gene1498	<i>nrfH</i>	Cytochrome c-type protein nrfh	15AR0984_01534
Gene1499	<i>ppk</i>	Polyphosphate kinase	15AR0984_01535
Gene1504		Hypothetical protein	15AR0984_01541
Gene1505	<i>ruvB</i>	Holliday junction ATP-dependent DNA helicase ruvb	15AR0984_01542
Gene1507	<i>fumC</i>	Fumarate hydratase class II	15AR0984_01544
Gene1509	<i>glmS</i>	Glutamine-fructose-6-phosphate aminotransferase [isomerizing]	15AR0984_01546
Gene1511	<i>mqnE</i>	Aminodeoxyfutasolinsine synthase	15AR0984_01548
Gene1512	<i>adeQ</i>	Adenine permease adeq	15AR0984_01549
Gene1513	<i>pyrE</i>	Orotate phosphoribosyltransferase	15AR0984_01550
Gene1514	<i>mIaA</i>	Putative phospholipid binding lipoprotein mIaA	15AR0984_01551
Gene1515	<i>mIaC</i>	Putative phospholipid binding protein mIaC	15AR0984_01552
Gene1516		Bifunctional preprotein translocase subunit secD/secF	15AR0984_01553
Gene1589	<i>kpsM</i>	Polysialic acid transport protein kpsM	15AR0984_01626
Gene1590		Hypothetical protein	15AR0984_01627
Gene1591		Hypothetical protein	15AR0984_01628
Gene1592		Dutpase	15AR0984_01629
Gene1593		Hypothetical protein	15AR0984_01630
Gene1595	<i>rimO</i>	Ribosomal protein S12 methyltransferase rimo	15AR0984_01632
Gene1596	<i>prfB</i>	Peptide chain release factor 2	15AR0984_01633
Gene1597		Hypothetical protein	15AR0984_01634
Gene1598	<i>truD</i>	Trna pseudouridine synthase D	15AR0984_01635
Gene1599	<i>thiL</i>	Thiamine-monophosphate kinase	15AR0984_01636
Gene1601		Hypothetical protein	15AR0984_01638

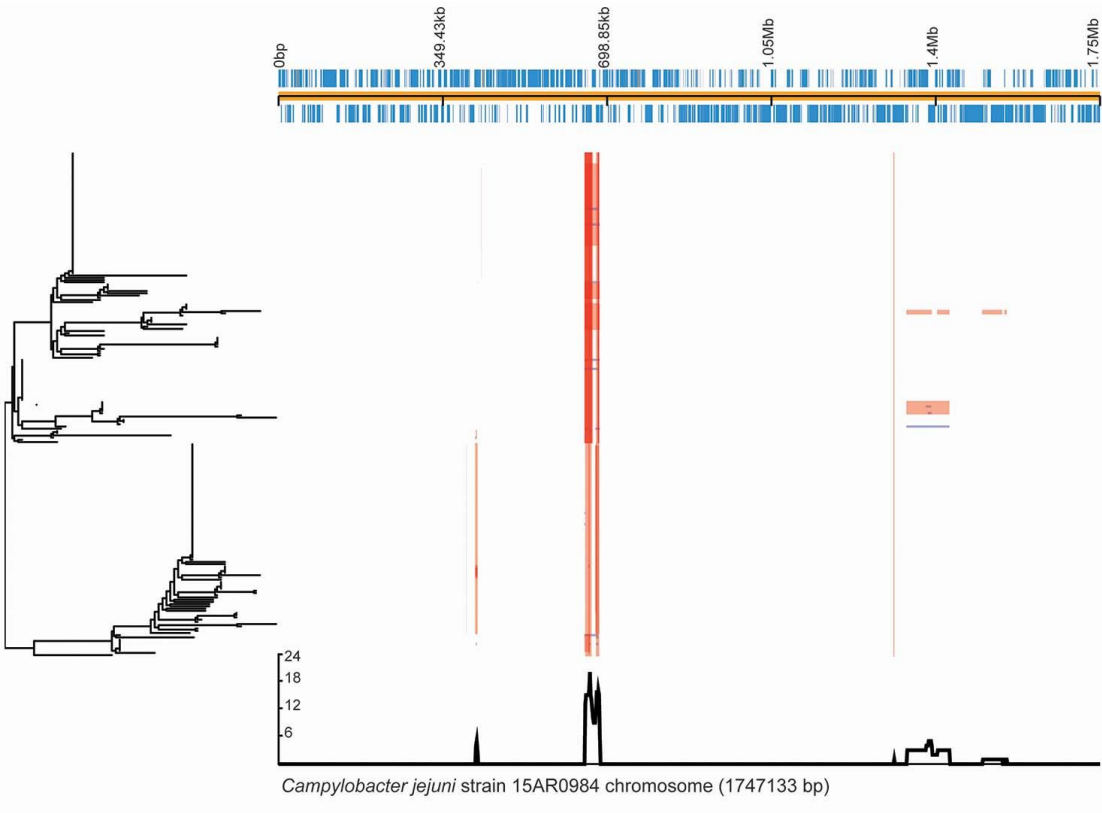
Alias	Gene	Function	Locus tag
Gene1602	<i>rsmD</i>	Ribosomal RNA small subunit methyltransferase D	15AR0984_01639
Gene1603	<i>flgI</i>	Flagellar P-ring protein	15AR0984_01640
Gene1604		Hypothetical protein	15AR0984_01641
Gene1605		Anti-sigma-28 factor, flgm	15AR0984_01642
Gene1606		Flgn protein	15AR0984_01643
Gene1607	<i>flgK</i>	Flagellar hook-associated protein 1	15AR0984_01644
Gene1609		Hypothetical protein	15AR0984_01646
Gene1616	<i>por</i>	Pyruvate synthase	15AR0984_01653
Gene1617	<i>ppaX</i>	Pyrophosphatase ppax	15AR0984_01654
Gene1618	<i>oprF</i>	Outer membrane porin F	15AR0984_01655
Gene1619	<i>rpsI</i>	30S ribosomal protein S9	15AR0984_01656
Gene1620	<i>rplM</i>	50S ribosomal protein L13	15AR0984_01657
Gene1621	<i>addA</i>	ATP-dependent helicase/nuclease subunit A	15AR0984_01658
Gene1624		Hypothetical protein	15AR0984_01661
Gene1625		Hypothetical protein	15AR0984_01662
Gene1626		Hypothetical protein	15AR0984_01663
Gene1627	<i>fixP</i>	Cbb3-type cytochrome c oxidase subunit fixp	15AR0984_01664
Gene1628		Cbb3-type cytochrome oxidase component fixq	15AR0984_01665
Gene1629		Cytochrome C oxidase, mono-heme subunit/fixo	15AR0984_01666
Gene1630	<i>ccoN1</i>	Cbb3-type cytochrome c oxidase subunit ccon1	15AR0984_01667
Gene1631	<i>mprA</i>	Response regulator mpra	15AR0984_01668
Gene1640		Hypothetical protein	15AR0984_01678
Gene1641	<i>putP</i>	Sodium/proline symporter	15AR0984_01679



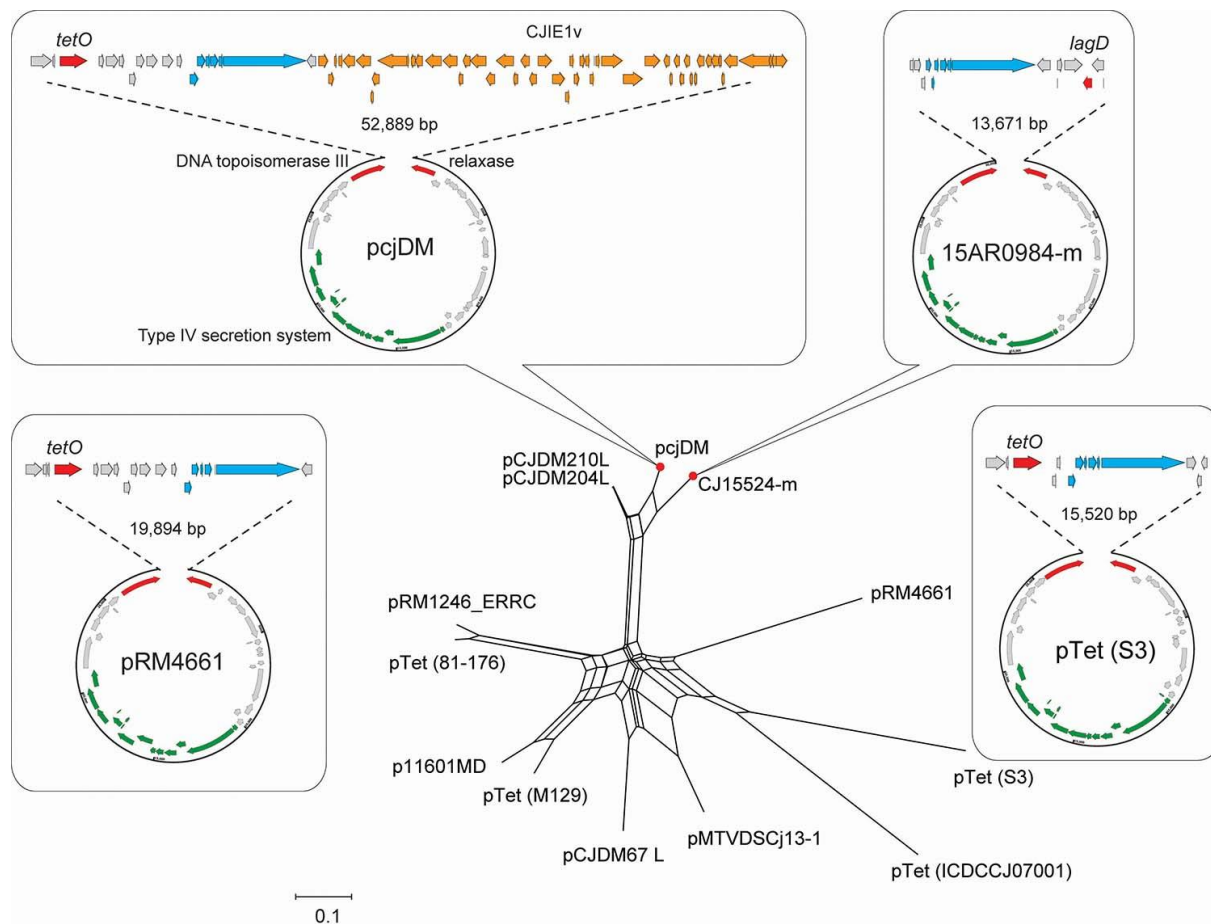
Appendix Figure 1. The location of the poultry farms from which *C. jejuni* ST 6964 positive ceecal samples were taken and the diagnostic laboratories that submitted human isolates including the 5 that participated in the human survey and the MidCentral laboratory in the Manawatu sentinel site.



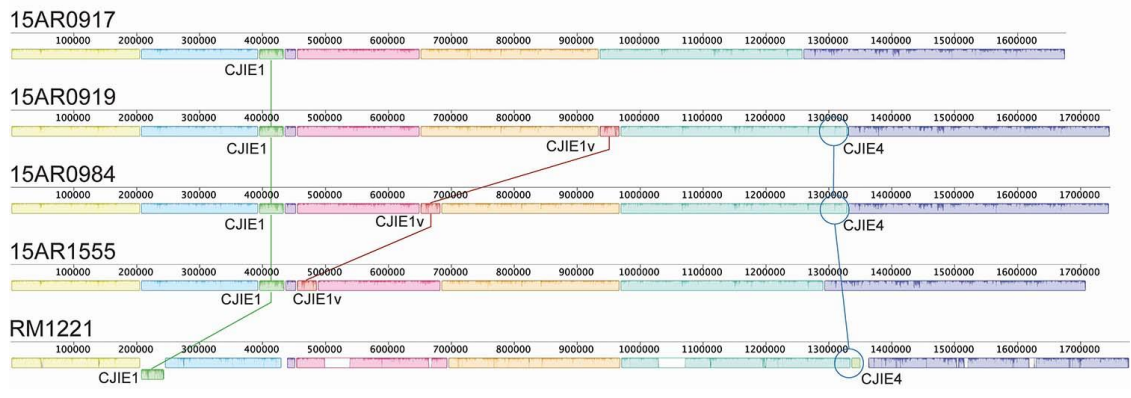
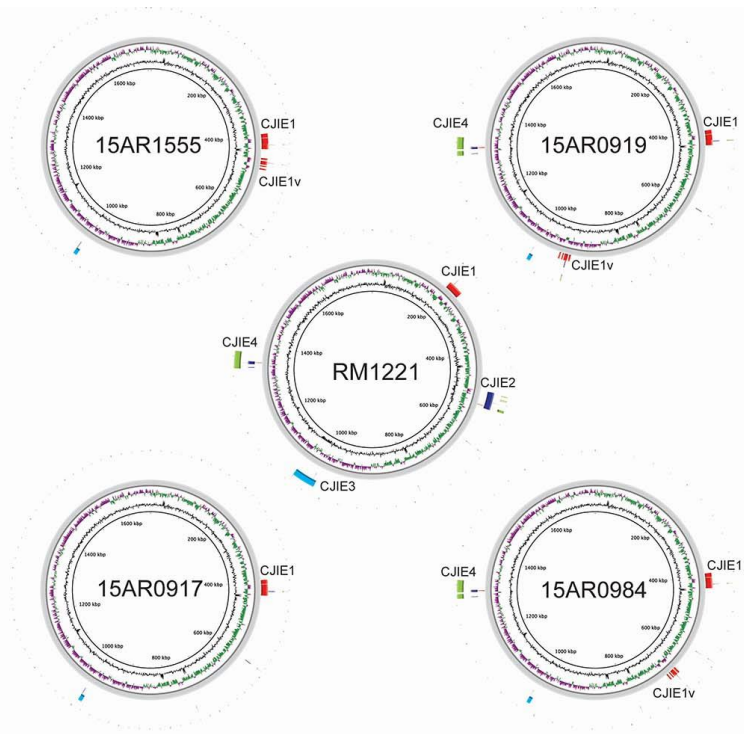
Appendix Figure 2. Pairwise distances and NeighborNet networks of the 227 *C. jejuni* ST-6964 isolates calculated by two independent wgMLST methods. The upper network was generated from the 1,363 shared loci found in the ad hoc wgMLST analysis; and the lower network was generated with the *C. jejuni* cgMLST scheme (1,343 loci) on the PubMLST Web site.



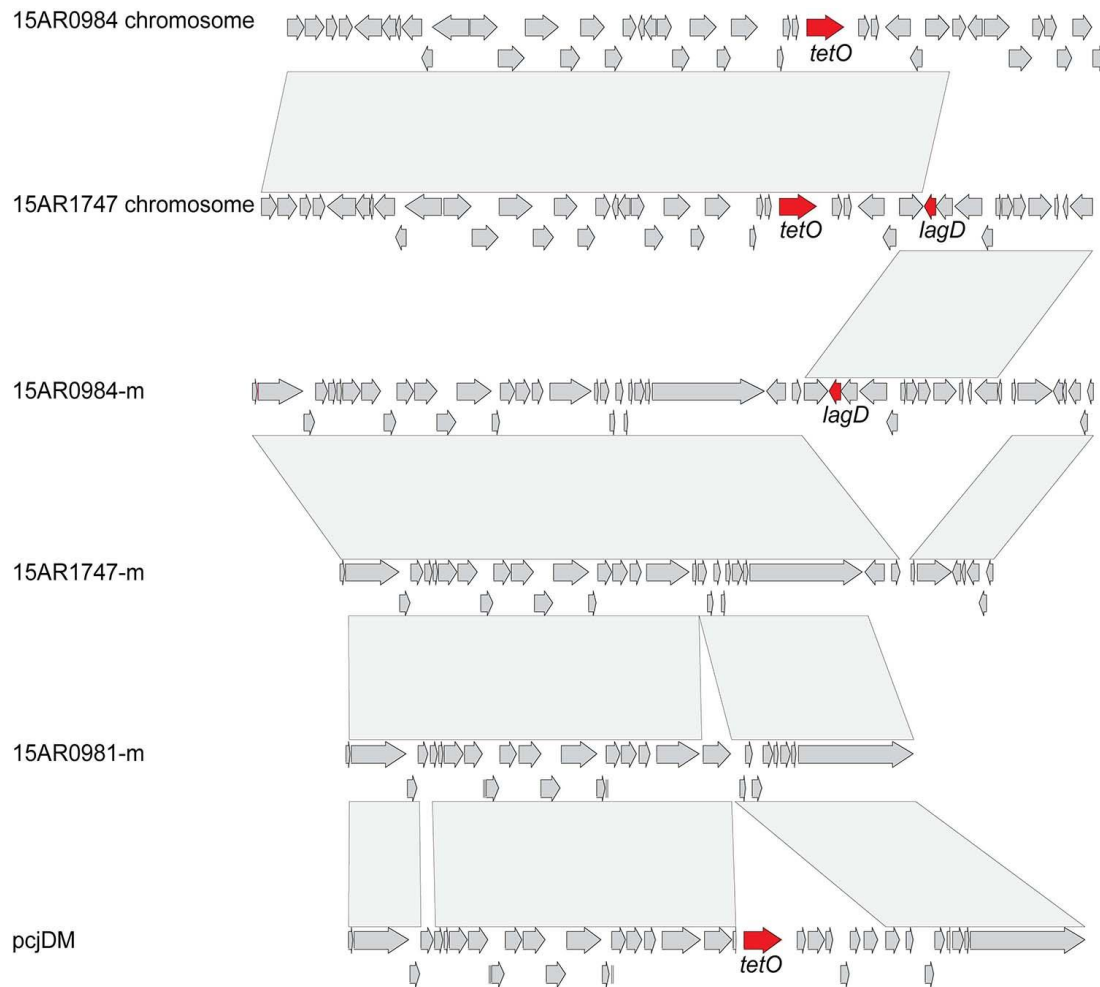
Appendix Figure 3. Recombination detected in 227 *C. jejuni* ST-6964 isolates. Coding regions are shown on both the forward and reverse strand of the annotated *C. jejuni* 15AR0984 reference genome. The tree is the inferred mid-point rooted phylogeny of 227 *C. jejuni* ST-6964 isolates and reference 15AR0984 genome is shown to the left and the recombination blocks identified by Gubbins are shown to the right of the tree; red indicates conserved blocks, blue indicates blocks detected in just one representative. The lower plot (black line) summarizes the number of recombination events across the entire *C. jejuni* reference genome.



Appendix Figure 4. NeighborNet phylogenetic relationship of the plasmid identified in the complete genome of isolate 15AR0984 related to nine other representative 'pTet-like' plasmids, based on the allele profiles of the 23 shared-loci. The genome structures of the closest plasmid *pcjDM* (four allele differences) and the other three plasmids were plotted to demonstrate the consensus regions (backbone) and hyper-variable regions in the plasmids.



Appendix Figure 5. The insertion locations of mobile elements CJIE1, CJIE1v and CJIE4 are illustrated in a whole genome alignment of the four complete genomes of ST-6964 isolates (15AR0984, 15AR0917, 15AR0919 and 15AR1555) and the reference RM1221. The upper rings were generated with the BLAST Ring Image Generator (BRIG) and the lower linear plots with Mauve. The mobile element CJIE1 was present in all isolates. CJIE1v was inserted in the three different locations in three of the ST-6964 isolate genomes.



Appendix Figure 6. High-scoring Segment Pairs (HSPs) between the chromosome and plasmid sequences of the strain 15AR0984, 15AR1747, 15AR0981 and T1-21 (pcjDM) were connected with gray bars to demonstrate similar regions. We hypothesize the *lagD* and *tetO* genes were in the same region and located in the plasmid of the ST-6964 ancestor strain, and the genome structure of the region in the ancestral plasmid was similar to the equivalent region in the chromosome of isolate 15AR1747. Subsequently, we hypothesize, this region was excised from the 15AR1747-m plasmid and integrated into its chromosome; whereas in 15AR0984-m plasmid, only the *tetO* gene region was excised and integrated into its chromosome, leaving *lagD* still in the 15AR0984-m plasmid. Alternatively, the *tetO* could be carried by a pcJDM-like plasmid, and subsequently excised from the 15AR0981-m plasmid and integrated the chromosomes (15AR0984 and 15AR1747 chromosomes).