

---

# Virus RNA Load in Patients with Tick-Borne Encephalitis, Slovenia

Ana Saksida, Nina Jakopin, Mateja Jelovšek, Nataša Knap, Luka Fajs, Lara Lusa, Stanka Lotrič-Furlan, Petra Bogovič, Maja Arnež, Franc Strle, Tatjana Avšič-Županc

We determined levels of tick-borne encephalitis (TBE) virus (TBEV) RNA in serum samples obtained from 80 patients during the initial phase of TBE in Slovenia. For most samples, levels were within the range of 3–6 log<sub>10</sub> copies RNA/mL. Levels were higher in female patients than in male patients, but we found no association between virus load and several laboratory and clinical parameters, including severity of TBE. However, a weak humoral immune response was associated with a more severe disease course, suggesting that inefficient clearance of virus results in a more serious illness. To determine whether a certain genetic lineage of TBEV had a higher virulence potential, we obtained 56 partial envelope protein gene sequences by directly sequencing reverse transcription PCR products from clinical samples of patients. This method provided a large set of patient-derived TBEV sequences. We observed no association between phylogenetic clades and virus load or disease severity.

Tick-borne encephalitis (TBE) is one of the major virus infections of the human central nervous system (CNS) in Europe and Asia. This disease is caused by TBE virus (TBEV) (family *Flaviviridae*, genus *Flavivirus*). Three main subtypes of this virus have been recognized (European, Siberian, and Far Eastern), and their geographic distribution closely resembles the distribution of their tick vectors, namely *Ixodes ricinus* ticks for the European subtype and *I. persulcatus* ticks for the Siberian and Far Eastern subtypes (1,2).

Approximately 10,000–15,000 TBE cases are reported annually; 3,000 of them are in Europe. However, because reporting of TBE is not established in all disease-endemic countries, the real numbers are most likely higher (2,3). Humans acquire TBEV infection mainly through tick bites and only rarely (≈1%) by consuming unpasteurized milk or milk products from infected livestock, particularly goats (4–6). Thus, most TBE cases occur in the warm months

of the year (April–November), which corresponds with the main period of tick activity (7,8).

Most (70%–98%) TBEV infections are believed to be asymptomatic (9,10). In ≈75% of patients with TBE caused by the European subtype, the disease has a typical biphasic course. The first phase, which follows an incubation period with a median of 8 days (range 2–28 days) after a tick bite, and which correlates with viremia, is characterized by nonspecific symptoms, such as fever, fatigue, general malaise, headache, and body pain, which are often associated with leukopenia or thrombocytopenia. The initial phase lasts for 2–7 days and is followed by an improvement or even an asymptomatic interval of ≈1 week (range 1–21 days). The second phase manifests as meningitis (≈50% of adult patients), meningoencephalitis (≈40%), or meningoencephalomyelitis (≈10%) (11–13). The severity of TBE increases with the age of patients (14,15). Unfavorable outcomes, including long-term sequelae, are more often seen in patients with severe acute illness (16,17) and other clinical and laboratory findings (12,16,18). However, the exact mechanisms leading to more severe disease and unfavorable outcome in an individual patient are not known.

After a tick bite, TBEV replication occurs locally in dendritic skin cells. From there, the virus reaches other organs, especially the spleen, liver, and bone marrow. It is believed that production of high levels of virus in the affected organs, resulting in viremia, is a prerequisite for the virus to cross the blood–brain barrier because the capillary endothelium is not easily infected. However, the exact mechanism by which TBEV accesses the brain is not known (13,19,20). Furthermore, some authors reported a correlation between a low concentration of neutralizing antibodies and more severe disease, suggesting that a delayed formation of neutralizing antibodies could be associated with high viremia (16,21). However, no information is available on the level of viremia in patients with TBE and its effect on disease severity. The main purpose of this study was to determine levels of TBEV RNA in clinical samples of patients with TBE and correlate these levels with several laboratory and clinical parameters, including severity of the disease.

---

Author affiliations: University of Ljubljana Faculty of Medicine, Ljubljana, Slovenia (A. Saksida, N. Jakopin, M. Jelovšek, N. Knap, L. Fajs, L. Lusa, T. Avšič-Županc); University Medical Center Ljubljana, Ljubljana (S. Lotrič-Furlan, P. Bogovič, M. Arnež, F. Strle)

DOI: <https://doi.org/10.3201/eid2407.180059>

## Patients and Methods

### Patients and Samples

Patients eligible for study were those given a diagnosis of TBE at the Department of Infectious Diseases, University Medical Center Ljubljana (Ljubljana, Slovenia), during 2003–2013 who were seen at the initial and second (meningoencephalitic) phases of TBE and in whom TBEV was identified by PCR in serum specimens obtained during the initial phase of the disease. Initial-phase serum samples were obtained either during a prospective study on the etiology of febrile illness after a tick bite or represented remnants of the samples collected as a part of routine diagnostic testing of a patient with a febrile illness in whom TBE later developed. In addition, available cerebrospinal fluid (CSF) samples obtained during the meningoencephalitic phase of the illness from the same patients were also included in the study. The specimens were stored at  $-80^{\circ}\text{C}$  until further processing.

### Definitions

The initial phase of TBE was classified as a febrile illness that, after a clinical improvement lasting  $\leq 21$  days, was followed by neurologic involvement. TBE was defined as clinical signs or symptoms of meningitis or meningoencephalitis, increased CSF leukocyte counts ( $>5 \times 10^6$  cells/L), and serum TBEV IgM and IgG or TBEV IgG seroconversion in paired serum samples. TBE was categorized as mild (only signs or symptoms of meningeal involvement), moderate (monofocal neurologic signs or mild-to-moderate signs/symptoms of CNS dysfunction), or severe (multifocal neurologic signs or signs/symptoms of severe dysfunction of the CNS) (11).

In addition to this simple clinical classification, a quantitative evaluation of the severity of the disease was performed by using a standardized questionnaire as reported (22). Points (1–9) were assigned for the presence, intensity, and duration of headache, fever, vomiting, and meningeal signs; the presence of tremor, pareses, urine retention, and cognitive function disturbances; the presence and intensity of conscious disturbances; and the need for and duration of treatment for increased intracranial pressure. The absence of a particular symptom/sign scored 0. A score  $<9$  corresponded to clinically mild disease, 9–22 to moderate disease, and  $>22$  to severe disease (22).

### Ethics Considerations

The study was conducted according to the principles of the Declaration of Helsinki, the Oviedo Convention on Human Rights and Biomedicine, and the Slovene Code of Medical Deontology. The study was approved by the National Medical Ethics Committee of Slovenia (no. 152/06/13, no. 178/02/13, and no. 37/12/13). Patients whose specimens

were obtained in the study on the etiology of febrile illness after a tick bite signed an informed consent form that included the use of collected specimens for further studies. The Ethics Committee waived the need for written informed consent for patients for whom remnants of routinely collected serum specimens were used.

### TBEV Antibody Levels

We determined the presence and concentration of TBEV antibodies in serum samples by using the Enzygnost Anti-TBE/FSME Virus (IgM, IgG) test (Siemens AG, Munich, Germany) according to the manufacturer's instructions. Specificities of the test were 99.5% for IgG and 99.9% for IgM, and sensitivities were 96.8% for IgG and 98.8% for IgM.

### TBEV RNA Load

We extracted total RNA from serum and CSF samples by using the QIAamp Viral RNA Mini Kit (QIAGEN, Hilden, Germany) according to the manufacturer's instructions. For a quantitative reverse transcription PCR (RT-PCR), we used the TaqMan Fast Virus 1-Step Master Mix (Applied Biosystems, Carlsbad, CA, USA). This RT-PCR was performed as reported (23). For analysis purposes, we converted virus loads to  $\log_{10}$  values.

### Sequencing and Phylogenetic Analysis

We obtained sequences by direct sequencing of RT-PCR products from serum samples of patients with TBE. A partial TBEV envelope (E) protein gene was amplified and sequenced by using primer pair TBE ENV 3F (5'-TGA GGG GAA GCC TTC AAT-3') and TBE ENV 3R (5'-TCA TGT TCA GGC CCA ACC A-3'), and sequence analysis was performed as reported (24).

### Statistical Analysis

Numerical data were summarized as means and SDs or medians and interquartile ranges (IQRs) and categorical variables as frequencies and percentages. We calculated 95% CIs for means or percentages of some variables. We assessed the association between variables and TBEV RNA by using univariate linear regression;  $\log_{10}$ -transformed TBEV RNA counts were used as the outcome variable. We used a similar approach to assess the association between phylogenetic clades and severity of disease.

We displayed observed associations with outcome variables graphically by using box and whisker plots for categorical variables and scatter plots for numerical variables. We added a loess regression (locally weighted scatterplot smoothing) line (25) with 95% CIs fitted by using the `geom_smooth` function in the `ggplot2` R software (26). We conducted analyses by using R statistical language (27).

## Results

### Patients and Samples

We obtained basic demographic data, clinical characteristics, and laboratory findings for 80 patients with established TBEV RNA in serum during the initial phase of TBE (Table). Second-phase CSF samples were available for 48 of these 80 patients.

### TBEV RNA Load

TBEV RNA was detected in serum of 80 patients with febrile illness in whom neurologic involvement later developed and who fulfilled criteria for TBE. CSF samples obtained at the meningoencephalitic phase of illness from 48 of these 80 patients all showed negative results for TBEV RNA. On the day of virus load detection, only 3 patients were positive for TBE IgM in the serum, and all other patients were negative for TBEV IgM and IgG.

The mean (SD) of the logarithmic transformation of TBEV RNA levels in serum was 4.65 (1.13)  $\log_{10}$  copies RNA/mL. For most (95%) patients, this level showed a range of 3–6  $\log_{10}$  copies RNA/mL (Figure 1, panel A). RNA-positive serum results were obtained as early as the first day and as late as the tenth day (median fifth day) of the initial phase of TBE. For 1 patient, we detected virus RNA in the serum

sample on day 14 of disease, which corresponded clinically to the seventh day of the asymptomatic interval. We did not find any substantial differences in numbers of RNA copies within this time frame (Figure 1, panel B).

TBEV RNA levels were higher in female patients than in male patients (mean [SD] 4.86 [1.25] vs. 4.4 [0.93]  $\log_{10}$  copies RNA/mL;  $p = 0.064$ ). The log-transformed number of detected RNA copies did not appear to be associated with ages of patients, leukocyte and platelet counts determined on the same day as RNA load (Figure 2, panels A–D), duration of the initial phase of TBE, duration of the asymptomatic interval between the initial phase and second phase of TBE, CSF cell count determined in the meningoencephalitic phase of illness, severity of TBE according to quantitative assessment, and simple clinical classification (mean [SD] virus load values in patients with clinically mild, moderate, and severe disease were 4.54 [0.75], 4.68 [1.27], and 4.74 [1.71]  $\log_{10}$  copies RNA/mL, respectively;  $p = 0.856$ ) (Figure 3, panels A–D). Associations between these variables and log-transformed TBEV RNA in the serum were not statistically significant, and they did not appear to have any potential clinical role.

We observed no differences in distribution of detected virus RNA levels when compared with concentrations of specific TBE IgG in initial follow-up serum samples of

**Table.** Characteristics of 80 patients with TBEV RNA in serum obtained during initial phase of TBE, Slovenia\*

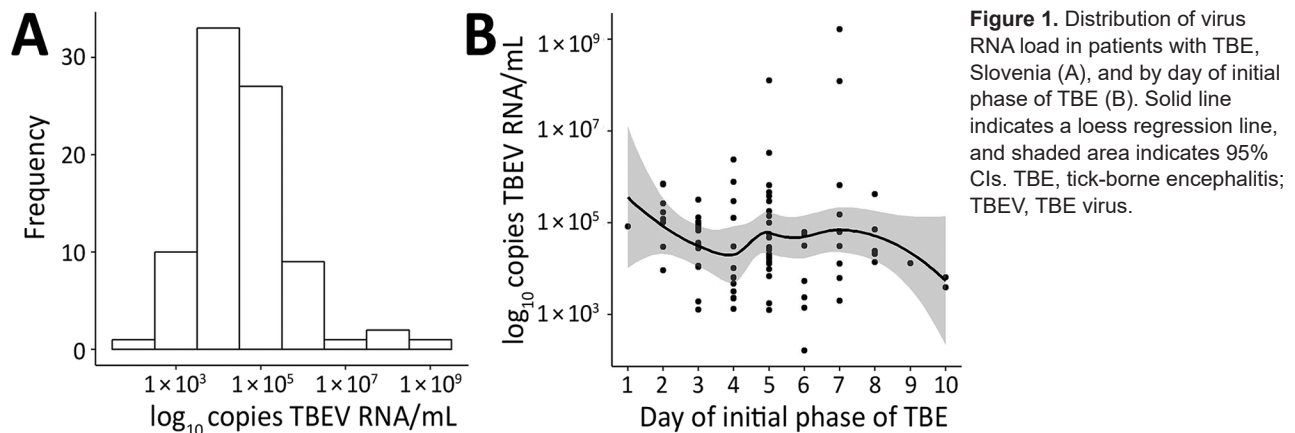
Characteristic	Value	95% CI†
Sex		
F	43 (53.8)	42.2–64.9
M	37 (46.2)	35.0–57.8
Median age, y (IQR)	48.5 (31–60.8)	42.0–50.5
F	52 (30–63)	41.1–53.2
M	47 (33–59)	39.1–51.4
History of tick bite	68 (85.0)	75.3–92.0
Initial (first) phase of TBE		
Leukopenia‡	71 (88.8)	79.7–94.7
Thrombocytopenia§	52 (65.0)	53.5–75.3
Duration of first phase (days), median (IQR)	6 (5–8)	5.9–6.7
Asymptomatic interval		
Duration, d, median (IQR)	10 (7–13)	9.5–11.7
Second (meningoencephalitic) phase of TBE		
CSF findings		
Cell count $\times 10^6/L$ , median (IQR)	57 (25–104.8)	64.6–122.6
Protein concentration, mg/L, median (IQR)	0.54 (0.40–0.74)	0.54–0.68
Serum antibodies to TBEV¶		
IgM	80 (100.0)	95.5–100.0
IgG	71 (88.7)	79.7–94.7
Severity of acute illness		
Quantitative assessment		
Mild	28 (35.0)	24.7–46.5
Moderate	45 (56.3)	44.7–67.3
Severe	7 (8.7)	3.6–17.2
Clinical classification		
Mild	29 (36.2)	25.8–47.8
Moderate	45 (56.3)	44.7–67.3
Severe	6 (7.5)	2.8–15.6

\*Values are no. (%) patients unless otherwise noted. CSF, cerebrospinal fluid; IQR, interquartile range; TBE, tick-borne encephalitis; TBEV, TBE virus.

†For the population percentage or the population mean.

‡Blood leukocyte count  $<4 \times 10^9/L$ .

§Blood platelet count  $<140 \times 10^9/L$ .

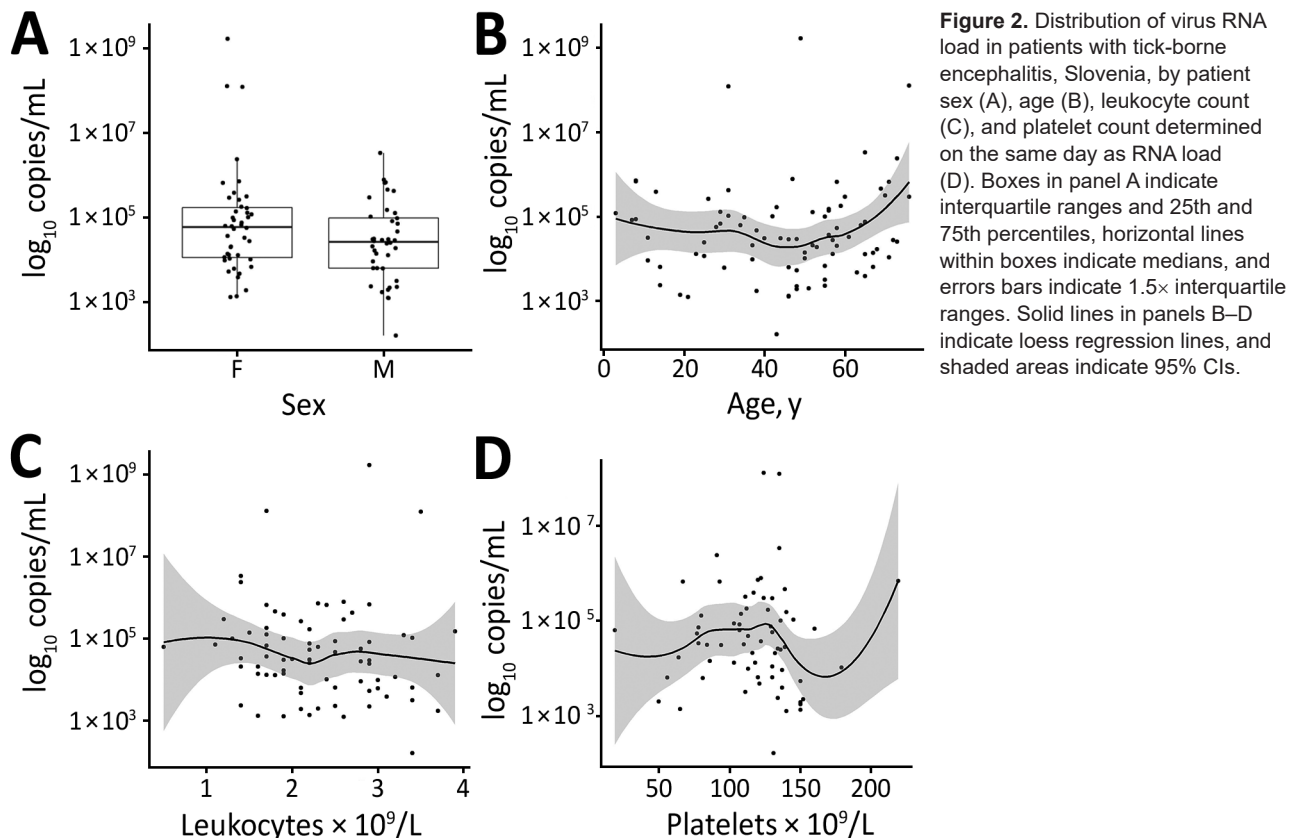


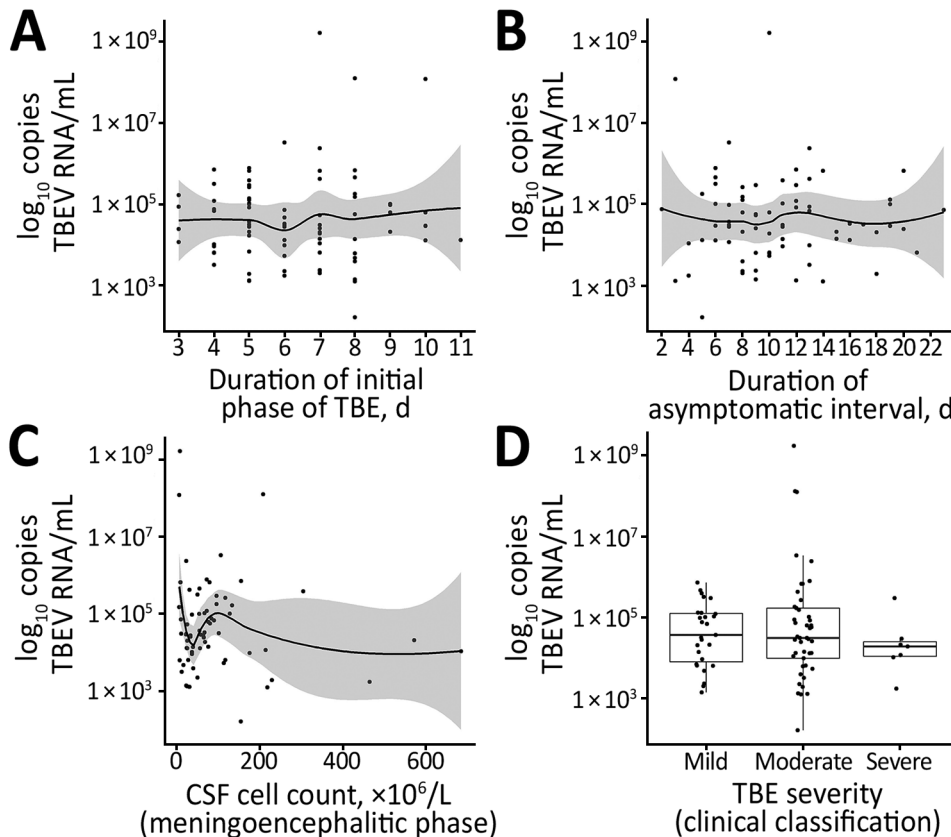
patients obtained during the second phase of the disease (Figure 4, panel A). However, we observed a significant association between TBEV antibody titers and disease severity ( $p = 0.005$ ); on average, lower IgG levels were observed for patients with more severe illness (Figure 4, panel B).

#### Phylogenetic Analysis

We obtained 56 partial E protein gene sequences by direct sequencing of RT-PCR products from serum samples of patients with TBE and used a 1,272-bp segment of the E protein gene for phylogenetic analysis. Analysis

showed that in Slovenia, sequences grouped into 6 clades (S1–S6). Nucleotide sequence identity was 95.8%–100% (divergence 0%–4.2%) and amino acid identity was 98.1%–100% (divergence 0%–1.9%). To assess a potential association of sequence divergence with geographic locations, we plotted permanent residences of patients on a map of Slovenia according to their respective phylogenetic clustering on the basis of E protein gene sequence analysis. Results showed a high level of regional clustering (online Technical Appendix Figure, <https://wwwnc.cdc.gov/EID/article/24/7/18-0059-Techappl.pdf>).





**Figure 3.** Distribution of virus RNA load in patients with TBE, Slovenia, by duration of initial phase of TBE (A), duration of asymptomatic interval (B), CSF cell count determined in the meningoencephalitic phase (C), and severity of TBE according to clinical classification (D). Solid lines in panels A–C indicate loess regression lines, and shaded areas indicate 95% CIs. Boxes in panel D indicate interquartile ranges and 25th and 75th percentiles, horizontal lines within boxes indicate medians, and error bars indicate 1.5× interquartile ranges. CSF, cerebrospinal fluid; TBE, tick-borne encephalitis; TBEV, TBE virus.

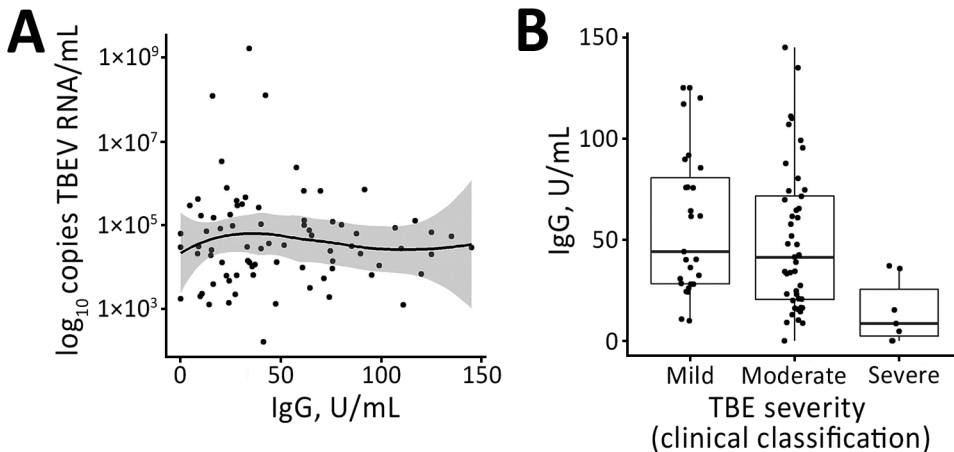
To determine whether a certain genetic lineage of TBEV had a higher virulence potential, we compared phylogenetic clades with levels of TBEV RNA and disease severity. Because there were too many groups to perform a meaningful statistical analysis, we combined some clades on the basis of their sequence identities (Figure 5). Although levels of TBEV RNA were somewhat lower in patients infected with viruses belonging to S4 and S5 phylogenetic clades, differences were not significant ( $p = 0.116$ ). Also, we observed no association between phylogenetic clades and disease severity (Figure 5).

## Discussion

Although TBE is one of the major and serious neuroinfections in Europe and Asia, some crucial steps in the development of the disease remain poorly understood. It has been postulated that high virus replication in the primarily affected organs, which maintains viremia in the first phase of the disease, is a prerequisite for the virus to cross the blood–brain barrier because viruses with a low capacity to generate viremia in peripheral tissue can be classified as having low neuroinvasiveness, regardless of their intrinsic neurovirulence potential (13,19,20). However, levels of viremia have so far been reported only in a few (individual) TBEV-infected patients (23,28).

In our study, we determined TBEV RNA loads in clinical samples and their association with laboratory and clinical parameters in a large group of patients with TBE. TBEV RNA levels were measured and detected in 80 first-phase serum samples obtained from 80 patients in whom neurologic involvement later developed and who were hospitalized for TBE during 2003–2013. TBEV RNA was detected in the time frame of 1–14 days from the beginning of the initial phase of illness. At the time of TBE RNA measurement, 79 patients were febrile (i.e., they were in the initial phase of TBE clinically). For 1 patient, TBEV RNA was detected 7 days after defervescence and 8 days before recurrence of fever; thus, this patient was clinically interpreted to be in the asymptomatic interval. For 95% of patients, levels of TBEV RNA were 3–6 log<sub>10</sub> copies/mL and showed a mean (SD) value of 4.65 (1.13) log<sub>10</sub> copies RNA/mL. In comparison, levels of viremia in blood or plasma samples of persons infected with West Nile virus (WNV) were somewhat lower (mean values 3–4 log<sub>10</sub> copies RNA/mL), but higher virus loads have been reported in urine samples (29–32). However, studies on WNV virus load included patients with symptomatic (West Nile fever and West Nile neurologic disease), as well as patients with asymptomatic infections; all of our patients were symptomatic and had neurologic manifestations. Data are not available for





**Figure 4.** A) Distribution of virus RNA load in patients with TBE, Slovenia, by levels of TBEV IgG. B) Levels of TBEV IgG according to disease severity (clinical classification). Solid line in panel A indicates loess regression line, and shaded area indicates 95% CIs. Boxes in panel B indicate interquartile ranges and 25th and 75th percentiles, horizontal lines within boxes indicate medians, and errors bars indicate 1.5× interquartile ranges. TBE, tick-borne encephalitis virus; TBEV, TBE virus.

viremia levels in patients infected with Japanese encephalitis virus, another major neurotropic flavivirus.

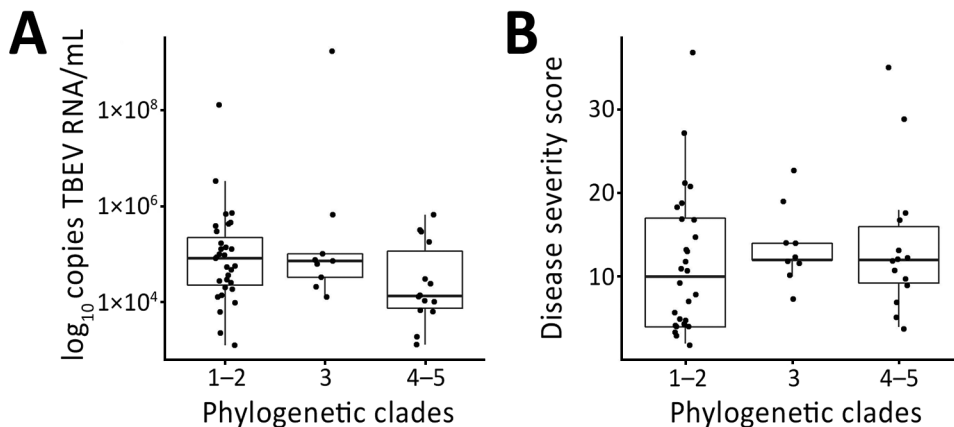
Although we determined that TBEV RNA was readily detected in first-phase TBE serum samples, TBEV RNA could not be detected in any of the second-phase CSF samples. This finding confirms previous findings that PCR examination of serum is a valuable approach for a diagnosis of TBEV infection in the first phase of the disease, whereas corresponding testing of CSF obtained in the meningoencephalitic phase of TBE is not a valuable approach (33).

We detected higher levels of TBEV RNA in female patients than in male patients. However, we found no association with age of patients. We do not have an obvious explanation for higher viremia in female patients, but female patients did not differ from male patients by age, day of illness when virus load was measured, severity of disease, and several other parameters.

To evaluate the role of TBEV RNA levels in the pathogenesis of disease, we assessed the association between measured TBEV RNA load and several clinical parameters, including duration of the first phase of the disease, duration of the asymptomatic interval, TBE severity, and clinical presentation. However, univariate linear regression showed no association between virus load and any of the observed

variables (Figure 3). This finding is consistent with findings from studies of laboratory mice, in which no association was detected between levels of TBEV, as well as WNV viremia and survival rates of animals (34,35). Studies of humans infected with WNV showed that higher virus loads in blood, plasma, or urine were present in patients with symptomatic infections than in those with asymptomatic infections, but no association was found between WNV burden and disease course (29,31,32,36). Because our study included only patients with symptomatic infection (i.e., those with biphasic TBE), we were unable to compare virus loads of the 2 viruses in asymptomatic infections.

Furthermore, our study found no association between virus RNA levels and laboratory parameters measured during the course of the disease, including leukocyte and platelet counts determined on the same day as RNA load and CSF cell counts and TBEV IgG levels determined at the beginning of encephalitic phase of TBE. However, a strong association was observed when TBEV IgG levels were compared with disease severity; the highest concentrations of antibodies were detected in patients with a mild form of the disease and the lowest concentrations were detected in patients with a severe form of the disease. This finding might suggest that although higher levels of TBEV



**Figure 5.** Distribution of virus RNA load in patients with tick-borne encephalitis, Slovenia, by A) virus phylogenetic clades and B) disease severity scores according to Bogovic et al. (22). Boxes indicate interquartile ranges and 25th and 75th percentiles, horizontal lines within boxes indicate medians, and errors bars indicate 1.5× interquartile ranges. TBEV, tick-borne encephalitis virus.

RNA are not directly associated with a more severe disease course, a limited or delayed humoral response results in a more severe illness caused by failure of the host to clear the virus. Thus, such prolonged viremia could result in a more pronounced infection of neuronal cells and subsequently in a more severe clinical presentation. This hypothesis is supported by previous studies of TBE patients (16) and experimentally infected laboratory animals (21,35,37), in which low concentrations of TBEV-specific antibodies and TBEV neutralizing antibodies in serum coincided with subsequent appearance of TBE and more severe disease.

Severity of TBE has been reported to vary in different geographic regions because severity is related to the subtype of the virus causing the infection. Thus, disease caused by the European TBEV subtype is considered to be milder than TBE caused by Siberian and Far Eastern subtypes, for which higher case-fatality rates and severe neurologic sequelae rates have been reported (1,38). However, differences in clinical presentation of TBE have also been reported in areas where only 1 virus subtype was present (11,17,39).

In our study, we obtained 56 partial E protein gene sequences by directly sequencing RT-PCR products from clinical samples of patients to avoid occurrence of mutations that could arise in the process of virus culturing or cloning. Relatively high genetic variability of TBEV from Slovenia was observed, which corroborates the results of Fajs et al. for a smaller number of patients in Slovenia (24). Previous studies of genetic diversity of TBEV have also shown that multiple sequence variants are present in relatively small geographic areas (40–43). In our study, we identified 6 phylogenetic clades by analyses of patient-derived E protein gene sequence analyses. Although the phylogeographic analysis of human samples included locations of residence, which do not necessarily correlate with site of infection, we observed an association between geographic and phylogenetic clustering, which suggested that most patients become infected near their homes, as reported previously (44). However, we found no association between phylogenetic clades and levels of TBEV RNA. Somewhat lower levels were detected in patients infected with viruses belonging to S4 and S5 phylogenetic clades, but we observed no major differences.

We also observed no association between phylogenetic clades and disease severity. These results do not demonstrate that differences in clinical presentation of TBE observed in a small geographic area are attributable to different genetic variants of the virus circulating in the area. Although in studies conducted by Belikov et al. (45) and Leonova et al. (46) in which full-genome sequences of Far Eastern TBEV strains isolated from patients with variable disease severity were analyzed, these authors found that the position of the strain on the phylogenetic tree and presence of specific mutations showed a strong correlation with

pathogenicity of TBEV strains and disease severity; mutations found in the E protein gene sequence did not correlate with the degree of pathogenicity of TBEV strains. Also, other studies reported that mutations in genome regions other than E protein gene could be responsible for changes in neuroinvasiveness and neurovirulence (47–49). Therefore, phylogenetic analysis of more genome sequences is needed for better understanding of potential differences in pathogenicity of virus strains circulating in Slovenia.

In conclusion, for most patients with TBE, levels of TBEV RNA in serum in the first stage of illness are 3–6 log<sub>10</sub> copies RNA/mL. The findings of our study do not indicate that levels of TBEV RNA in the first stage of TBE are directly associated with clinical presentation or severity of disease, or that levels can be used as a prognosis factor. Nevertheless, a weak humoral immune response seems to be associated with more severe acute illness, which suggests that inefficient clearance of virus results in a more serious infection of the CNS. The pathogenesis of TBE is most likely a complex and multifactorial process driven by properties of TBEV, as well as by the immune responses of the host. Further studies are needed to substantiate the association between the efficiency of virus clearance, prolonged viremia, and clinical presentation, and to better elucidate the immunopathogenesis of infections with TBEV.

This study was supported by the Slovenian Research Agency (grants P3-0083 and P3-0296) and the European Commission (EU Horizon 2020 Project EVAg, grant 653316).

### About the Author

Dr. Saksida is a postdoctoral research scientist at the Institute of Microbiology and Immunology, Faculty of Medicine, University of Ljubljana, Ljubljana, Slovenia. Her primary research interests are virus zoonoses (tick-borne encephalitis, hemorrhagic fevers) and the immunopathogenesis of these diseases.

### References

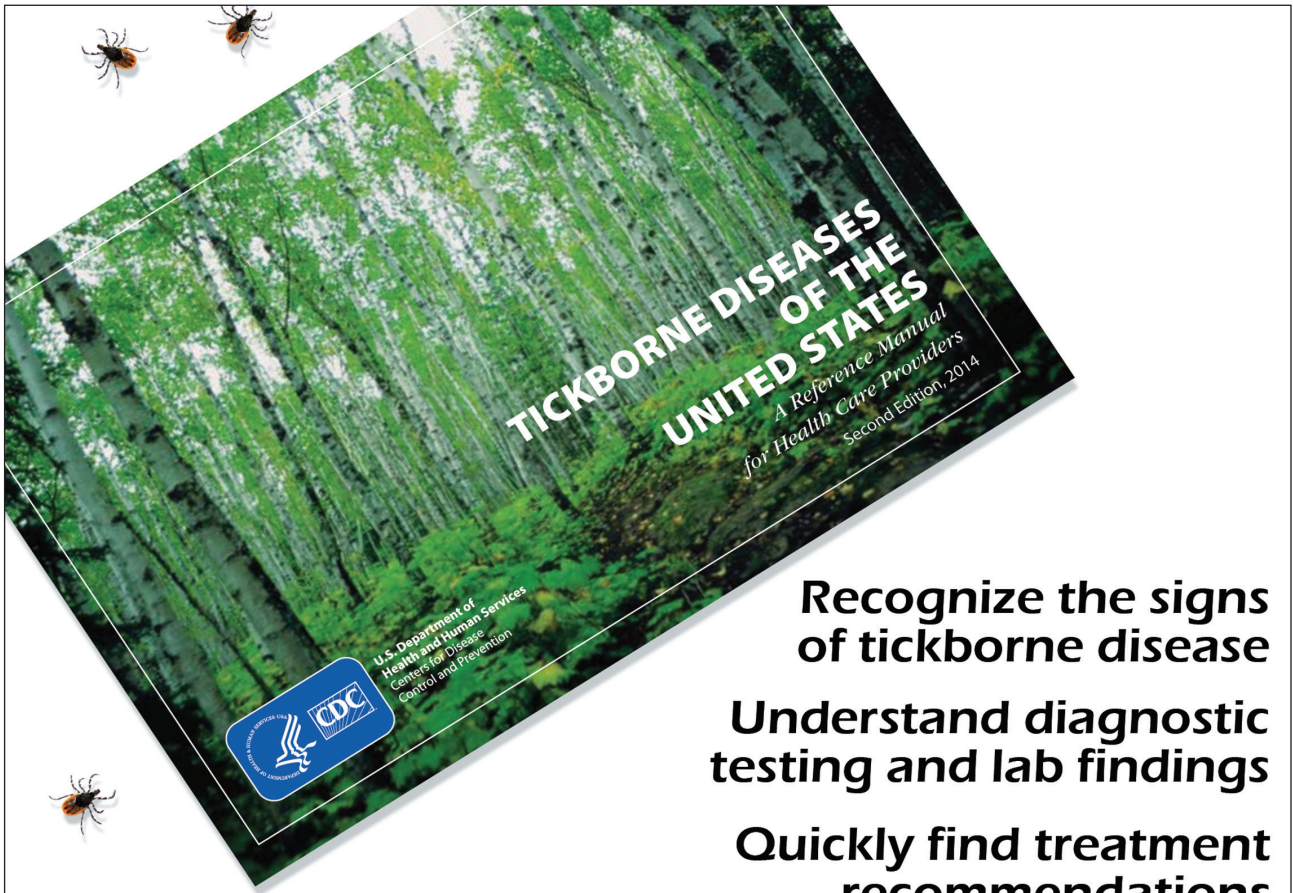
- Gritsun TS, Lashkevich VA, Gould EA. Tick-borne encephalitis. *Antiviral Res.* 2003;57:129–46. [http://dx.doi.org/10.1016/S0166-3542\(02\)00206-1](http://dx.doi.org/10.1016/S0166-3542(02)00206-1)
- Stüss J. Tick-borne encephalitis 2010: epidemiology, risk areas, and virus strains in Europe and Asia—an overview. *Ticks Tick Borne Dis.* 2011;2:2–15. <http://dx.doi.org/10.1016/j.ttbdis.2010.10.007>
- Dobler G, Gniel D, Petermann R, Pfeffer M. Epidemiology and distribution of tick-borne encephalitis. *Wien Med Wochenschr.* 2012;162:230–8. <http://dx.doi.org/10.1007/s10354-012-0100-5>
- Hudopisk N, Korva M, Janet E, Simetinger M, Grgič-Vitek M, Gubenšek J, et al. Tick-borne encephalitis associated with consumption of raw goat milk, Slovenia, 2012. *Emerg Infect Dis.* 2013;19:806–8. <http://dx.doi.org/10.3201/eid1905.121442>
- Kríz B, Benes C, Daniel M. Alimentary transmission of tick-borne encephalitis in the Czech Republic (1997–2008). *Epidemiol Mikrobiol Imunol.* 2009;58:98–103.
- Markovinović L, Kosanović Ličina ML, Tešić V, Vojvodić D, Vladušić Lucić I, Kniewald T, et al. An outbreak of tick-borne

- encephalitis associated with raw goat milk and cheese consumption, Croatia, 2015. *Infection*. 2016;44:661–5. <http://dx.doi.org/10.1007/s15010-016-0917-8>
7. Knap N, Avšič-Županc T. Factors affecting the ecology of tick-borne encephalitis in Slovenia. *Epidemiol Infect*. 2015;143:2059–67. <http://dx.doi.org/10.1017/S0950268815000485>
  8. Lindquist L, Vapalahti O. Tick-borne encephalitis. *Lancet*. 2008;371:1861–71. [http://dx.doi.org/10.1016/S0140-6736\(08\)60800-4](http://dx.doi.org/10.1016/S0140-6736(08)60800-4)
  9. Gustafson R, Svenungsson B, Forsgren M, Gardulf A, Granström M. Two-year survey of the incidence of Lyme borreliosis and tick-borne encephalitis in a high-risk population in Sweden. *Eur J Clin Microbiol Infect Dis*. 1992;11:894–900. <http://dx.doi.org/10.1007/BF01962369>
  10. Kaiser R. Tick-borne encephalitis. *Infect Dis Clin North Am*. 2008;22:561–75, x. <http://dx.doi.org/10.1016/j.idc.2008.03.013>
  11. Bogovic P, Lotric-Furlan S, Strle F. What tick-borne encephalitis may look like: clinical signs and symptoms. *Travel Med Infect Dis*. 2010;8:246–50. <http://dx.doi.org/10.1016/j.tmaid.2010.05.011>
  12. Kaiser R. Tick-borne encephalitis: clinical findings and prognosis in adults. *Wien Med Wochenschr*. 2012;162:239–43. <http://dx.doi.org/10.1007/s10354-012-0105-0>
  13. Růžek D, Dobler G, Donoso Mantke O. Tick-borne encephalitis: pathogenesis and clinical implications. *Travel Med Infect Dis*. 2010;8:223–32. <http://dx.doi.org/10.1016/j.tmaid.2010.06.004>
  14. Logar M, Arnez M, Kolbl J, Avsic-Zupanc T, Strle F. Comparison of the epidemiological and clinical features of tick-borne encephalitis in children and adults. *Infection*. 2000;28:74–7. <http://dx.doi.org/10.1007/s150100050050>
  15. Logar M, Bogovic P, Cerar D, Avsic-Zupanc T, Strle F. Tick-borne encephalitis in Slovenia from 2000 to 2004: comparison of the course in adult and elderly patients. *Wien Klin Wochenschr*. 2006;118:702–7. <http://dx.doi.org/10.1007/s00508-006-0699-6>
  16. Kaiser R, Holzmann H. Laboratory findings in tick-borne encephalitis: correlation with clinical outcome. *Infection*. 2000;28:78–84. <http://dx.doi.org/10.1007/s150100050051>
  17. Mickiene A, Laiskonis A, Günther G, Vene S, Lundkvist A, Lindquist L. Tickborne encephalitis in an area of high endemicity in Lithuania: disease severity and long-term prognosis. *Clin Infect Dis*. 2002;35:650–8. <http://dx.doi.org/10.1086/342059>
  18. Bogovič P, Stupica D, Rojko T, Lotrič-Furlan S, Avšič-Županc T, Kastrin A, et al. The long-term outcome of tick-borne encephalitis in central Europe. *Ticks Tick Borne Dis*. 2018;9:369–78. <http://dx.doi.org/10.1016/j.ttbdis.2017.12.001>
  19. Chambers TJ, Diamond MS. Pathogenesis of flavivirus encephalitis. *Adv Virus Res*. 2003;60:273–342. [http://dx.doi.org/10.1016/S0065-3527\(03\)60008-4](http://dx.doi.org/10.1016/S0065-3527(03)60008-4)
  20. Mandl CW. Steps of the tick-borne encephalitis virus replication cycle that affect neuropathogenesis. *Virus Res*. 2005;111:161–74. <http://dx.doi.org/10.1016/j.virusres.2005.04.007>
  21. Hofmann H, Frisch-Niggemeyer W, Kunz C. Protection of mice against tick-borne encephalitis by different classes of immunoglobulins. *Infection*. 1978;6:154–7. <http://dx.doi.org/10.1007/BF01641903>
  22. Bogovic P, Logar M, Avsic-Zupanc T, Strle F, Lotric-Furlan S. Quantitative evaluation of the severity of acute illness in adult patients with tick-borne encephalitis. *Biomed Res Int*. 2014; 2014:841027. <http://dx.doi.org/10.1155/2014/841027>
  23. Schwaiger M, Cassinotti P. Development of a quantitative real-time RT-PCR assay with internal control for the laboratory detection of tick borne encephalitis virus (TBEV) RNA. *J Clin Virol*. 2003;27:136–45. [http://dx.doi.org/10.1016/S1386-6532\(02\)00168-3](http://dx.doi.org/10.1016/S1386-6532(02)00168-3)
  24. Fajs L, Durmišič E, Knap N, Strle F, Avšič-Županc T. Phylogeographic characterization of tick-borne encephalitis virus from patients, rodents and ticks in Slovenia. *PLoS One*. 2012;7:e48420. <http://dx.doi.org/10.1371/journal.pone.0048420>
  25. Cleveland WS, Grosse E, Shyu WM. Local regression models. In: Chambers JM, Hastie T, editors. *Statistical models*. Boca Raton (FL): Chapman and Hall/CRC; 1992. p. 309–76.
  26. Wickham H, editor. *ggplot2: elegant graphics for data analysis*. New York: Springer Science + Business Media; 2009.
  27. Team RCR. *A language and environment for statistical computing*. Vienna: R Foundation for Statistical Computing; 2014.
  28. Schultze D, Dollenmaier G, Rohner A, Guidi T, Cassinotti P. Benefit of detecting tick-borne encephalitis viremia in the first phase of illness. *J Clin Virol*. 2007;38:172–5. <http://dx.doi.org/10.1016/j.jcv.2006.11.008>
  29. Barzon L, Pacenti M, Franchin E, Pagni S, Martello T, Cattai M, et al. Excretion of West Nile virus in urine during acute infection. *J Infect Dis*. 2013;208:1086–92. <http://dx.doi.org/10.1093/infdis/jit290>
  30. Kumar JS, Saxena D, Parida M. Development and comparative evaluation of SYBR Green I–based one-step real-time RT-PCR assay for detection and quantification of West Nile virus in human patients. *Mol Cell Probes*. 2014;28:221–7. <http://dx.doi.org/10.1016/j.mcp.2014.03.005>
  31. Lanteri MC, Lee TH, Wen L, Kaidarova Z, Bravo MD, Kiely NE, et al. West Nile virus nucleic acid persistence in whole blood months after clearance in plasma: implication for transfusion and transplantation safety. *Transfusion*. 2014;54:3232–41. <http://dx.doi.org/10.1111/trf.12764>
  32. Zou S, Foster GA, Dodd RY, Petersen LR, Stramer SL. West Nile fever characteristics among viremic persons identified through blood donor screening. *J Infect Dis*. 2010;202:1354–61. <http://dx.doi.org/10.1086/656602>
  33. Saksida A, Duh D, Lotric-Furlan S, Strle F, Petrovec M, Avsic-Zupanc T. The importance of tick-borne encephalitis virus RNA detection for early differential diagnosis of tick-borne encephalitis. *J Clin Virol*. 2005;33:331–5. <http://dx.doi.org/10.1016/j.jcv.2004.07.014>
  34. Brown AN, Kent KA, Bennett CJ, Bernard KA. Tissue tropism and neuroinvasion of West Nile virus do not differ for two mouse strains with different survival rates. *Virology*. 2007;368:422–30. <http://dx.doi.org/10.1016/j.virol.2007.06.033>
  35. Palus M, Vojtišková J, Salát J, Kopecký J, Grubhoffer L, Lipoldová M, et al. Mice with different susceptibility to tick-borne encephalitis virus infection show selective neutralizing antibody response and inflammatory reaction in the central nervous system. *J Neuroinflammation*. 2013;10:77. <http://dx.doi.org/10.1186/1742-2094-10-77>
  36. Barzon L, Pacenti M, Franchin E, Martello T, Lavezzo E, Squarzon L, et al. Clinical and virological findings in the ongoing outbreak of West Nile virus Livenza strain in northern Italy, July to September 2012. *Euro Surveill*. 2012;17:20260.
  37. Dörrbecker B, Dobler G, Spiegel M, Hufert FT. Tick-borne encephalitis virus and the immune response of the mammalian host. *Travel Med Infect Dis*. 2010;8:213–22. <http://dx.doi.org/10.1016/j.tmaid.2010.05.010>
  38. Mansfield KL, Johnson N, Phipps LP, Stephenson JR, Fooks AR, Solomon T. Tick-borne encephalitis virus: a review of an emerging zoonosis. *J Gen Virol*. 2009;90:1781–94. <http://dx.doi.org/10.1099/vir.0.011437-0>
  39. Dumpis U, Crook D, Oksi J. Tick-borne encephalitis. *Clin Infect Dis*. 1999;28:882–90. <http://dx.doi.org/10.1086/515195>
  40. Bakhvalova VN, Rar VA, Tkachev SE, Matveev VA, Matveev LE, Karavanov AS, et al. Tick-borne encephalitis virus strains of western Siberia. *Virus Res*. 2000;70:1–12. [http://dx.doi.org/10.1016/S0168-1702\(00\)00174-X](http://dx.doi.org/10.1016/S0168-1702(00)00174-X)
  41. Gäumann R, Růžek D, Mühlemann K, Strasser M, Beuret CM. Phylogenetic and virulence analysis of tick-borne encephalitis virus field isolates from Switzerland. *J Med Virol*. 2011;83:853–63. <http://dx.doi.org/10.1002/jmv.21993>



42. Han X, Juceviciene A, Uzcategui NY, Brummer-Korvenkontio H, Zygotiene M, Jääskeläinen A, et al. Molecular epidemiology of tick-borne encephalitis virus in *Ixodes ricinus* ticks in Lithuania. *J Med Virol*. 2005;77:249–56. <http://dx.doi.org/10.1002/jmv.20444>
43. Weidmann M, Ruzek D, Krivanec K, Zöller G, Essbauer S, Pfeiffer M, et al. Relation of genetic phylogeny and geographical distance of tick-borne encephalitis virus in central Europe. *J Gen Virol*. 2011;92:1906–16. <http://dx.doi.org/10.1099/vir.0.032417-0>
44. Durmiši E, Knap N, Saksida A, Trilar T, Duh D, Avšič-Županc T. Prevalence and molecular characterization of tick-borne encephalitis virus in *Ixodes ricinus* ticks collected in Slovenia. *Vector Borne Zoonotic Dis*. 2011;11:659–64. <http://dx.doi.org/10.1089/vbz.2010.0054>
45. Belikov SI, Kondratov IG, Potapova UV, Leonova GN. The relationship between the structure of the tick-borne encephalitis virus strains and their pathogenic properties. *PLoS One*. 2014;9:e94946. <http://dx.doi.org/10.1371/journal.pone.0094946>
46. Leonova GN, Maistrovskaya OS, Kondratov IG, Takashima I, Belikov SI. The nature of replication of tick-borne encephalitis virus strains isolated from residents of the Russian Far East with inapparent and clinical forms of infection. *Virus Res*. 2014;189:34–42. <http://dx.doi.org/10.1016/j.virusres.2014.04.004>
47. Dobler G, Bestehorn M, Antwerpen M, Överby-Wernstedt A. Complete genome sequence of a low-virulence tick-borne encephalitis virus strain. *Genome Announc*. 2016;4:e01145-16. <http://dx.doi.org/10.1128/genomeA.01145-16>
48. Růžek D, Gritsun TS, Forrester NL, Gould EA, Kopecký J, Golovchenko M, et al. Mutations in the NS2B and NS3 genes affect mouse neuroinvasiveness of a western European field strain of tick-borne encephalitis virus. *Virology*. 2008;374:249–55. <http://dx.doi.org/10.1016/j.virol.2008.01.010>
49. Wallner G, Mandl CW, Ecker M, Holzmann H, Stiasny K, Kunz C, et al. Characterization and complete genome sequences of high- and low- virulence variants of tick-borne encephalitis virus. *J Gen Virol*. 1996;77:1035–42. <http://dx.doi.org/10.1099/0022-1317-77-5-1035>

Address for correspondence: Tatjana Avšič-Županc, Institute of Microbiology and Immunology, Faculty of Medicine, University of Ljubljana, Zaloška 4, Ljubljana 1000, Slovenia; email: [tatjana.avsic@mf.uni-lj.si](mailto:tatjana.avsic@mf.uni-lj.si)



**TICKBORNE DISEASES OF THE UNITED STATES**  
*A Reference Manual for Health Care Providers*  
 Second Edition, 2014

U.S. Department of Health and Human Services  
 Centers for Disease Control and Prevention

**Recognize the signs of tickborne disease**

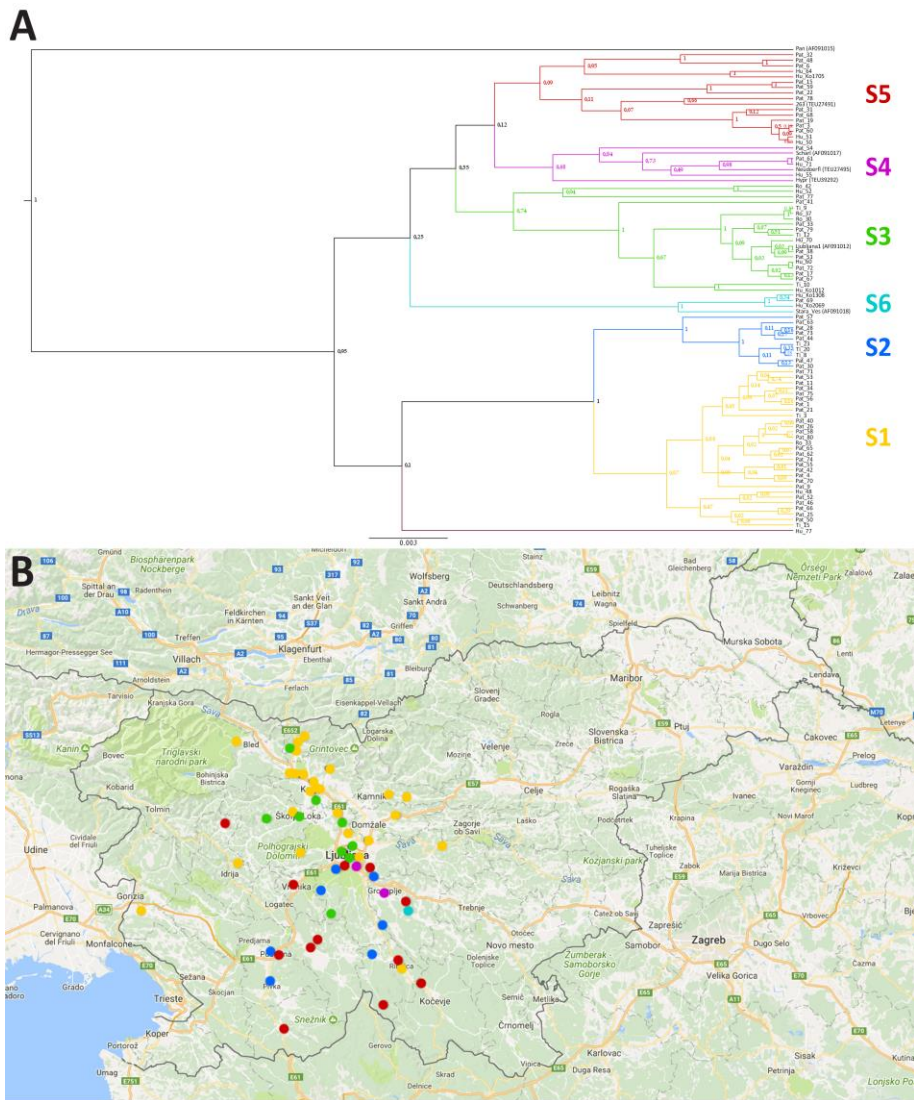
**Understand diagnostic testing and lab findings**

**Quickly find treatment recommendations**

**Order or download at**  
[www.cdc.gov/pubs](http://www.cdc.gov/pubs)

# Virus RNA Load in Patients with Tick-Borne Encephalitis, Slovenia

## Technical Appendix



**Technical Appendix Figure.** Correlation of phylogenetic and geographic clustering of virus RNA sequences of tickborne encephalitis viruses, Slovenia. A) Bayesian phylogenetic analysis of 56 partial envelope protein gene sequences (1,272 bp). Scale bar indicates nucleotide substitutions per site. S, clade. B) Map of Slovenia showing geographic locations (circles) of permanent residences of patients. Circles are colored according to results of phylogenetic analysis of an envelope protein gene sequence of tickborne encephalitis virus, which identified clades of virus isolated from patients. Blue boxes indicate road numbers.