

Lethal Respiratory Disease Associated with Human Rhinovirus C in Wild Chimpanzees, Uganda, 2013

Erik J. Scully, Sarmi Basnet, Richard W. Wrangham, Martin N. Muller, Emily Otali, David Hyeroba, Kristine A. Grindle, Tressa E. Pappas, Melissa Emery Thompson, Zarin Machanda, Kelly E. Watters, Ann C. Palmenberg, James E. Gern, Tony L. Goldberg

We describe a lethal respiratory outbreak among wild chimpanzees in Uganda in 2013 for which molecular and epidemiologic analyses implicate human rhinovirus C as the cause. Postmortem samples from an infant chimpanzee yielded near-complete genome sequences throughout the respiratory tract; other pathogens were absent. Epidemiologic modeling estimated the basic reproductive number (R_0) for the epidemic as 1.83, consistent with the common cold in humans. Genotyping of 41 chimpanzees and examination of 24 published chimpanzee genomes from subspecies across Africa showed universal homozygosity for the cadherin-related family member 3 *CDHR3*-Y₅₂₉ allele, which increases risk for rhinovirus C infection and asthma in human children. These results indicate that chimpanzees exhibit a species-wide genetic susceptibility to rhinovirus C and that this virus, heretofore considered a uniquely human pathogen, can cross primate species barriers and threatens wild apes. We advocate engineering interventions and prevention strategies for rhinovirus infections for both humans and wild apes.

Rhinoviruses are antigenically diverse members of the family *Picornaviridae*, genus *Enterovirus*, that cause the common cold (1). Rhinovirus C causes an estimated 50% of all human upper respiratory tract infections (1) and most acute exacerbations of asthma in children (2). More than 160 distinct rhinovirus genotypes have been identified in human populations globally, and extensive antigenic

heterogeneity limits cross-protective immunity (3). Accordingly, persons typically acquire several rhinovirus infections annually throughout childhood and continue to acquire new infections throughout adulthood (4).

Although many rhinovirus infections are only mildly symptomatic, rhinovirus C has been associated with influenza-like respiratory symptoms and acute exacerbations of asthma in children (5). The elevated virulence of rhinovirus C derives from its unique reliance on the cadherin-related family member 3 (CDHR3) receptor for host cell binding (6). A single-nucleotide polymorphism in *CDHR3* (rs6967330, C529Y) is associated with a 10-fold increase of RV-C binding and progeny yield and is a major risk factor for rhinovirus C infection and asthma (7). The protective *CDHR3*-C₅₂₉ nonrisk allele has been detected exclusively in modern humans, whereas archaic Neanderthal and Denisovan humans each expressed the ancestral risk allele (8). The origin of rhinovirus C and the spread of the protective allele among modern human populations is thought to have occurred $\approx 8,000$ years ago (9).

Humans and chimpanzees (*Pan troglodytes*) are closely related species that share many physiologic similarities, including a general predisposition for pathogen exchange, which, in some cases, might lead to human pandemics (10). Anthroponotic (i.e., of human origin) respiratory viruses have caused notable mortality rates in wild chimpanzee populations (11–14), and molecular testing of both postmortem and noninvasive (fecal) samples from wild apes during respiratory disease outbreaks have implicated human paramyxoviruses (family *Paramyxoviridae*) as anthroponotic causes (11–14). However, because of the limitations of field-based diagnostics, direct detection of pathogens from lesions of the respiratory tract has proven difficult (12,14). In this study, we were able to identify rhinovirus C, a pathogen not previously known to infect species other than humans, as the causative agent of an epidemic of respiratory disease in chimpanzees by directly sampling the lesions

Author affiliations: Harvard University, Cambridge, Massachusetts, USA (E.J. Scully, R.W. Wrangham); University of Wisconsin–Madison, Madison, Wisconsin, USA (S. Basnet, K.A. Grindle, T.E. Pappas, K.E. Watters, A.C. Palmenberg, J.E. Gern, T.L. Goldberg); University of New Mexico, Albuquerque, New Mexico, USA (M.N. Muller, M.E. Thompson); Makerere University, Kampala, Uganda (E. Otali, D. Hyeroba); Tufts University, Grafton, Massachusetts, USA (Z. Machanda)

DOI: <https://doi.org/10.3201/eid2402.170778>

of a dead animal and by subsequent noninvasive sampling (from feces) and epidemiological modeling.

Methods

Ethics Statement

This study involved only observational, noninvasive research with wild chimpanzees. All animal protocols were approved by the Harvard University Institutional Animal Care and Use Committee (Cambridge, MA, USA; protocol 96-03) and the University of New Mexico Office of Animal Care Compliance (Albuquerque, NM, USA; protocol 11-100726-MCC). These protocols adhered to guidelines and laws set forth by the Weatherall Report on the use of nonhuman primates in research (<https://royalsociety.org/policy/publications/2006/weatherall-report/>), as well as the Guide for the Care and Use of Laboratory Animals of the National Institute of Health, Office of Animal Welfare, US Department of Agriculture Animal Welfare Act, Institute for Laboratory Animal Research Guide for the Care and Use of Laboratory Animals, US Public Health Service, US National Academies of Sciences National Research Council, and US Centers for Disease Control and Prevention.

Sample Collection and Sequence Analysis

Starting approximately in February 2013 and continuing through August of that year, the Kanyawara community of chimpanzees in Kibale National Park, western Uganda, experienced an outbreak of severe respiratory disease. At the onset of the epidemic, the community consisted of 56 chimpanzees <1 week–56.9 years of age. All Kanyawara chimpanzees are individually identifiable and habituated to human observers, such that trained field assistants collected direct data on behavior and respiratory signs daily. We compiled these data into weekly measures of clinical signs (coughing or sneezing, further classified as mild or severe) and deaths. During June–August 2013, we collected fecal samples from 41 chimpanzees. Immediately after observing defecation by a chimpanzee, we placed 5 mL of the fecal sample into an equal volume of RNAlater buffer (Thermo Fisher Scientific, Waltham, MA, USA), homogenized the mixture, and stored the sample at –20°C for up to 3 months, until export to the United States.

One chimpanzee showing clinical signs (Betty, a 2.2-year-old female) died during the outbreak; her body was recovered immediately after death. An experienced veterinarian (D.H.) performed the postmortem examination and collected samples from her oropharynx, trachea, and lung using swabs (sterile, plastic shaft with Dacron tip) and stored the samples separately in 0.25 mL of RNAlater buffer at –20°C. We homogenized the swab tips, extracted sample RNA, and converted the RNA to double-stranded cDNA in the field. We shipped the cDNA to the United

States for unbiased sequencing and pathogen discovery on an Illumina MiSeq instrument (Illumina, San Diego, CA, USA) using 300-bp paired-end read chemistry as previously described (15).

We analyzed sequence data using CLC Genomics Workbench version 8.5 (CLC bio, Aarhus, Denmark). In brief, we trimmed low-quality bases (phred quality score <30), discarded short reads (<75 bp), and subjected the remaining reads to de novo assembly. We then analyzed raw sequence reads and assembled contiguous sequences (contigs), which we examined for similarity to known viruses in GenBank databases.

From these analyses, we inferred the presence of a rhinovirus, which we subsequently identified as a member of the rhinovirus C species. We performed pairwise sequence comparisons in MEGA7 (16) to assess the genetic similarity of this virus to its relatives, and we evaluated recombination with other rhinovirus C strains by using RDP4 (17). We performed phylogenetic analyses on this virus and all complete rhinovirus polyprotein genes available in the GenBank database. We first aligned genes by codon using the MAFFT algorithm (18) implemented in Translator X (19) and removed poorly aligned regions using the Gblocks algorithm (20). We then used jModelTest (21) to estimate the model of molecular evolution from the data and PhyML (22) for phylogenetic inference.

We tested chimpanzee fecal samples for a suite of respiratory pathogens by multiplex Luminex assay using the NxTAG Respiratory Pathogen Panel (Luminex Corporation, Austin, TX, USA) (23) and confirmed positive results by singleplex PCR. The NxTAG Respiratory Pathogen Panel includes influenza virus A (multiple subtypes), human respiratory syncytial viruses A and B, coronaviruses (multiple subtypes), human metapneumovirus, rhinovirus/enterovirus, adenovirus, parainfluenza viruses 1–4, bocavirus, and the bacterial pathogens *Chlamydophila pneumoniae* and *Mycoplasma pneumoniae*. In brief, we added up to 50 µL of fecal suspension to 350 µL of saline; homogenized the mixture; and clarified the mixture by centrifugation at 15,000 rpm for 3 minutes, after which we added Luminex internal control MS2 before nucleic acid extraction with the NucliSENS EasyMag kit (bioMérieux, Marcy-l'Étoile, France). We then used 10 µL of eluate in the Luminex assay according to the manufacturer's specifications. We applied this same assay to swab samples and assessed the viral load of rhinovirus C–positive swab samples using a published real-time quantitative PCR (qPCR) (24).

CDHR3 Genotyping

Given the influence of *CDHR3* allelic variants on rhinovirus C pathogenesis in humans, we genotyped the *CDHR3* allele of 41 chimpanzees from the Kanyawara community using their fecal specimens. In brief, we extracted DNA from fecal

samples using the MagMAX Kit (Thermo Fisher Scientific), and we then genotyped the extracted DNA using a qPCR-based allelic discrimination assay (CDHR3 TaqMan SNP Genotyping Assay; Thermo Fisher Scientific). We assayed serial 2-fold dilutions of eluted DNA to identify the dilution yielding the strongest fluorescent signal; then, we tested 2 additional replicates of each sample at that optimal dilution. We also examined the *CDHR3* locus of 24 additional chimpanzees from across Africa (including 4 recognized subspecies) using whole genome sequences previously published as part of the Great Ape Genome Project (25).

Epidemiologic Modeling

To infer epidemiologic parameters related to transmission, we constructed an SIR (susceptible-infectious-removed) mathematical model. Following Althaus et al. (26), we fit the SIR model to cumulative incidence data and produced maximum-likelihood estimates of epidemiologic parameters (e.g., transmission rate, recovery rate) using the Nelder and Mead optimization algorithm in the optim package in R version 3.3.2 (<https://www.r-project.org/>). Because the epidemic was triphasic, we fit each of the three 2013 respiratory episodes separately. We assumed a well-mixed population of 50 chimpanzees and did not explore heterogeneity of social interactions to minimize model complexity and provide baseline estimates of epidemiologic parameters (online Technical Appendix Figure 1, <https://wwwnc.cdc.gov/EID/article/24/2/17-0778-Techapp1.pdf>).

Results

The epidemic occurred in 3 phases (Figure 1): an early phase (21 days in February–March 2013), during which 24

animals became ill and 1 infant died; a middle phase (22 days in May–June 2013), during which 40 animals became ill and 4 adults died; and a late phase (19 days in August–September 2013), during which 31 animals became ill and none died. Of the ~56 chimpanzees in the community at the beginning of 2013, five died during the outbreak (1 infant 2.2 years of age and 4 adults 24.0–57.9 years of age), for an overall mortality rate of 8.9%.

A postmortem analysis was conducted on the infant that died in March (peak of the early phase); other animals that died were not recovered in time for such analyses. The postmortem analysis revealed ecchymotic hemorrhages on the lung surfaces, consolidation of the parenchyma of both lungs (approximately two thirds of both lungs affected), mucoid exudate in the bronchi, hepatomegaly, and hepatic congestion. On the basis of these findings, the cause of death was concluded to be severe acute pneumonia. Deep sequencing of swab samples from this chimpanzee's oropharynx, trachea, and lung yielded 10,722,035 sequence reads, of which 8,918 had high similarity to rhinovirus C. No other pathogens were detected. Subsequent qPCR confirmed infection with RV-C, with viral loads of 7.41×10^6 copies/swab in the oropharynx, 1.05×10^7 copies/swab in the trachea, and 1.74×10^6 copies/swab in the lung; these values are comparable to the average viral load (7.76×10^6 copies/mL) found in rhinovirus C-infected children with acute wheezing illness treated in an emergency department (27). Further sequencing yielded a near-complete rhinovirus C genome consisting of a complete polyprotein gene of 6,450 bases, a complete 3' untranslated region (UTR) of 35 bases excluding the poly(A) tail, and a partial 5'-UTR of 480 bases. The viral polyprotein sequence was 94.59%

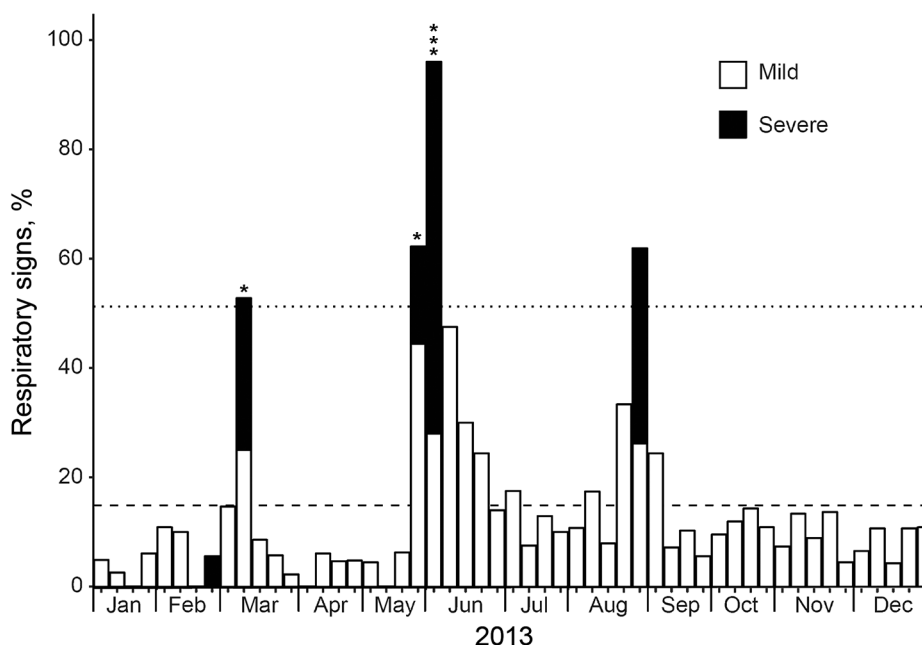
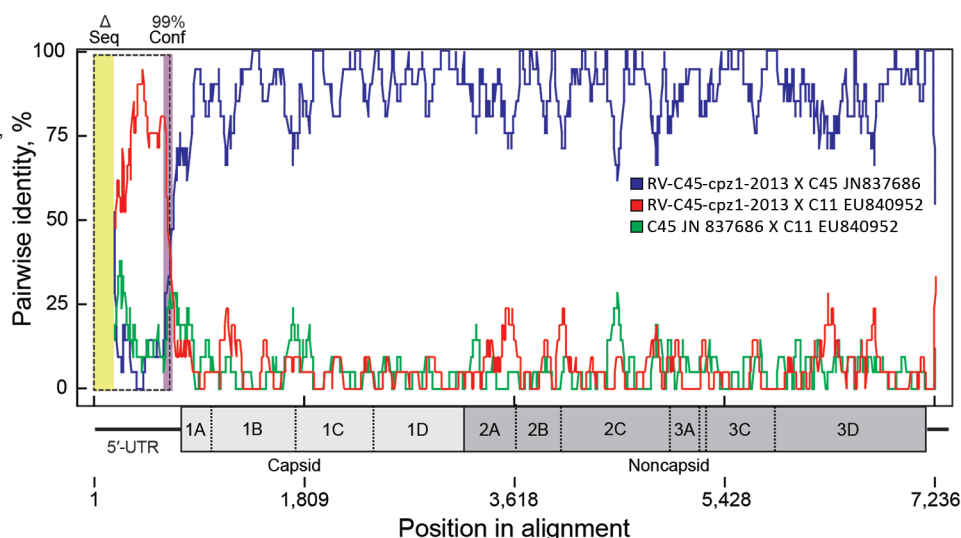


Figure 1. Epidemic curve of respiratory illness in the Kanyawara chimpanzee community, Uganda, 2013. Observational data on clinical severity (mild or severe) of respiratory signs (coughing and sneezing) were obtained and compiled into weekly measurements. The proportions of animals showing signs of respiratory illness are displayed by severity. Dashed line indicates 2013 mean rate of respiratory signs, and dotted line indicates 2 SD above that mean. Asterisks above bars indicate the timing of individual animal deaths.

similar at the nucleic acid level and 99.99% similar at the amino acid level to its closest known relative, a rhinovirus C45 sequence (GenBank accession no. JN837686) from a 2-month-old male patient who had a history of mild nasal congestion and discharge in the United States in 2000. RDP4 analyses showed the chimpanzee-derived sequence to be a rhinovirus C45-C11 recombinant, with a breakpoint in the 5'-UTR (Figure 2). In phylogenetic analyses, the virus clustered within known rhinovirus C genotypes, appearing as a sister taxon to the reference rhinovirus C45 isolate (Figure 3). The chimpanzee-derived strain was designated RV-C45-cpz1-2013 to indicate its presumptive serotype and discovery in a chimpanzee in 2013 (GenBank accession no. KY624849).

We confirmed that all swab samples from the deceased infant chimpanzee were positive for rhinovirus C by Luminex assay. Two of the 41 fecal samples collected during the epidemic were positive for enteroviruses, but subsequent molecular typing using published methods (28) demonstrated these to be non-rhinovirus enteroviruses, which occur in wild apes without known clinical significance (14,29,30). Fifteen samples were also positive for adenoviruses by Luminex assay. Subsequent typing of these viruses by PCR and direct sequencing of a portion of the hexon gene according to published methods (31) was successful for 11 samples. The resulting sequences (GenBank accession nos. KY624838–KY624848) were identical or closely related to adenoviruses found in fecal samples from apparently healthy wild chimpanzees and other nonhuman primates (32–35) (online Technical Appendix Figure 2).

Figure 2. Recombination between viral genotypes rhinovirus C45 and C11 leading to RV-C45-cpz1-2013, the strain identified in the Kanyawara chimpanzee community, Uganda, 2013. Analyses were performed in RDP4 (17) on aligned rhinovirus C genome sequences of 36 known genotypes. Each alignment entry encoded the full or nearly full polyprotein gene sequence, but some sequences were missing fragments (<400 bp) of their respective 5'-UTRs (Δ seq, yellow box at left). The 3' poly(A) tail was not included. A recombination event between the 2 viruses shown (GenBank nos. JN837686 and EU840952) is the most likely event among all full alignment comparisons (window size 20 bps) according to 6 of the 9 RDP4 algorithms. The average p values were RDP 2.8×10^{-81} , GENECONV 3.0×10^{-70} , MaxChi 1.4×10^{-18} , Chimaera 2.1×10^{-21} , SiScan 3.6×10^{-34} , and 3Seq 1.5×10^{-27} . BootScan, PhylPro, and LARD made no call for these particular parents. Purple box in the 5'-UTR denotes the 99% breakpoint confidence level (combined). Dashed box indicates the position of the most likely swapped fragment. The (Monte Carlo corrected) probability for this event is 2.8×10^{-81} . The virus map is scaled to the alignment. Conf, confidence level; RV-C, rhinovirus C; Δ seq, missing sequence; UTR, untranslated region.



(window size 20 bps) according to 6 of the 9 RDP4 algorithms. The average p values were RDP 2.8×10^{-81} , GENECONV 3.0×10^{-70} , MaxChi 1.4×10^{-18} , Chimaera 2.1×10^{-21} , SiScan 3.6×10^{-34} , and 3Seq 1.5×10^{-27} . BootScan, PhylPro, and LARD made no call for these particular parents. Purple box in the 5'-UTR denotes the 99% breakpoint confidence level (combined). Dashed box indicates the position of the most likely swapped fragment. The (Monte Carlo corrected) probability for this event is 2.8×10^{-81} . The virus map is scaled to the alignment. Conf, confidence level; RV-C, rhinovirus C; Δ seq, missing sequence; UTR, untranslated region.

Genotyping of chimpanzee DNA from fecal samples showed all 41 animals to be homozygous for the *CDHR3*-Y₅₂₉ allele, which is associated with increased susceptibility to rhinovirus C and wheezing illness in humans (7). Similarly, all 24 chimpanzee genomes from the Great Ape Genome Project (25) were homozygous for the *CDHR3*-Y₅₂₉ allele.

Epidemiologic modeling of the 2013 chimpanzee respiratory epidemic yielded daily transmission rate estimates of 0.85, 0.44, and 0.62 (average 0.68) and duration of infection estimates of 1.6 days, 5.8 days, and 2.1 days (average 3.2 days) for the 3 phases of the epidemic. Together, these parameters equate to basic reproductive numbers (R_0 values) of 1.38, 2.56, and 1.56 for the 3 phases of the epidemic, with an overall R_0 estimate of 1.83 (online Technical Appendix Figure 1).

Discussion

Rhinovirus C is unusual among rhinoviruses because of its clinical severity, unique biochemistry of receptor attachment, and role in modern human evolution (9). The analyses we present show that rhinovirus C is also distinguished by its ability to cross primate species barriers and cause severe disease. Although experiments conducted in the 1960s showed rhinoviruses A and B to be capable of infecting chimpanzees in captivity, infections were mild and self-limiting (36,37). Among other enteroviruses, only poliovirus has been implicated as a cause of death in wild chimpanzees (38). By showing that rhinovirus C is highly pathogenic in wild chimpanzees, our findings expand the known host range and clinical consequences of one of the most common causes of human respiratory disease.

Variant RV-C45-cpz1-2013 occupies an unremarkable phylogenetic position among rhinovirus C genomic variants from humans around the world (Figure 3). Although this virus is a recombinant between 2 genotypes, C11 and C45, it is unlikely that this property is related to its origin in a chimpanzee host. Indeed, rhinoviruses often recombine; the parent strains of RV-C45-cpz1-2013 and the genomic location of the recombination event are similar to those described previously (3). RV-C45-cpz1-2013 also shares with other rhinovirus C variants the capacity to infect the lower respiratory tract and cause severe disease. Viral load values from this animal's oropharynx (7.41×10^6 copies/swab), trachea (1.05×10^7 copies/swab), and lung (1.74×10^6 copies/swab) are comparable to the average viral load (7.76×10^6 copies/mL) found in rhinovirus C-infected children with acute wheezing illness treated in an emergency

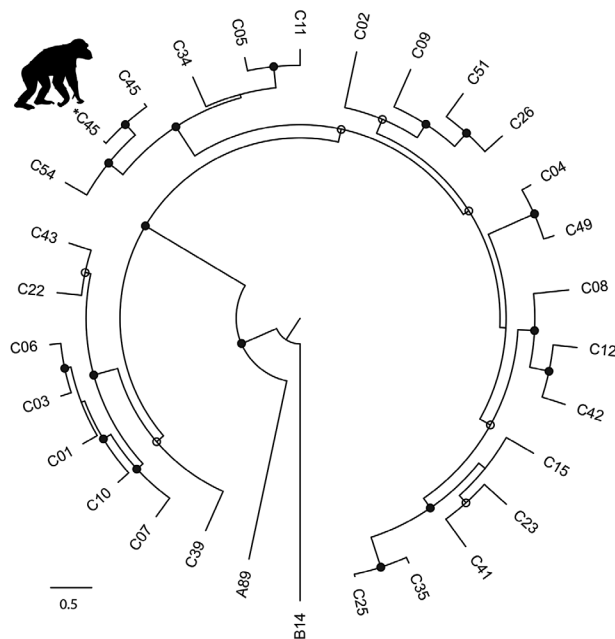


Figure 3. Phylogenetic tree of rhinovirus C variants. The tree was constructed from a codon-based alignment (6,234 positions) of the new chimpanzee-derived sequence identified in the Kanyawara chimpanzee community, Uganda, 2013 (indicated by the asterisk and chimpanzee silhouette), and all human-derived RV-C complete polyprotein gene sequences available in GenBank as of December 18, 2016, with rhinoviruses A and B from the RefSeq database included as outgroups. We created alignments using the MAFFT algorithm (18) implemented in the computer program Translator X (19), with the Gblocks algorithm (20) applied to remove poorly aligned regions. We constructed trees using the maximum-likelihood method implemented in PhyML (22), with best-fit models of molecular evolution estimated from the data by using jModelTest (21). Circles on nodes indicate statistical confidence on the basis of 1,000 bootstrap replicates of the data (closed circles 100%; open circles $\geq 75\%$). Scale bar indicates nucleotide substitutions per site. GenBank accession numbers and other details of the RV-C sequences included in the analysis are in online Technical Appendix Table (<https://wwwnc.cdc.gov/EID/article/24/2/17-0778-Techapp1.pdf>).

department (27). Although published estimates of rhinovirus epidemiologic transmission parameters are sparse, the values estimated for the 2013 chimpanzee outbreak (transmission rate 0.68/d; duration of infection 3.2 days) are close to those of common cold viruses in humans (transmission rate 0.74/d; duration of infection 3.0 days) (39). Despite this similarity, these values are likely similar for many acute respiratory viruses.

Epidemics of respiratory disease have been recorded in ape populations across Africa, but the causes have often remained undiagnosed. For example, during 47 years of wild chimpanzee observation in Gombe, Tanzania, respiratory disease accounted for 48% of illness-related deaths and was the predominant cause of lethal illness in this population (40). When noninvasive diagnoses were attempted in other populations, human paramyxoviruses were sometimes implicated (11–14). However, rhinovirus C could have been missed in outbreaks for which the cause was never identified. Standard molecular diagnostics for rhinoviruses might have failed to detect rhinovirus C, which is genetically divergent from rhinoviruses A and B (28). Furthermore, rhinoviruses are adapted to the respiratory tract and are acid sensitive, such that virions dissociate below pH 6.0 (41). Because of this property, rhinoviruses are unlikely to survive gastrointestinal transit, and their nucleic acids are unlikely to be found in feces, except during acute and fulminant infections (42). Noninvasive diagnostics of ape respiratory disease outbreaks might, therefore, be inherently limited in detecting rhinoviruses, which is unfortunate given that the remote locations in which these endangered apes live often preclude invasive diagnostics (12).

In humans, the *CDHR3*-Y₅₂₉ allele is associated with increased susceptibility to rhinovirus C infection (7). This elevated risk results from increased cell surface expression of CDHR3, enhanced viral binding to the cellular receptor, and increased progeny yields (6,7). GenBank searches of all published nonhuman primate genome sequences suggest that modern humans are the only primate species in which the *CDHR3*-C₅₂₉ nonrisk allele occurs (A.C. Palmenberg, unpub. data). In agreement with this finding, all chimpanzees genotyped from the Kanyawara community and across Africa were homozygous for the *CDHR3*-Y₅₂₉ risk allele. The fact that only modern humans (and not Neanderthals or Denisovans) possess the nonrisk allele implies that resistance to rhinovirus C infection was selected for only in modern humans (9). These results highlight a species-wide susceptibility to rhinovirus C infection among chimpanzees.

Our inference about rhinovirus C as the likely cause of the epidemic is based on clinical samples from a single animal early in the outbreak. We consider it unlikely, however, that rhinovirus C was an incidental finding. The virus was found in this animal's lung, which was a site of severe pathology, at clinically relevant titers, and paramyxoviruses and other respiratory pathogens were not identified in these

samples or in fecal samples from the 41 other animals. All adenoviruses sequenced from fecal samples were similar or identical to adenoviruses that have been documented in apparently healthy wild chimpanzees and other primates (32,34,35,43). Finally, clinical signs during the chimpanzee outbreak bore a striking resemblance to those caused by rhinovirus C in susceptible humans, and epidemiologic transmission parameter estimates were consistent with the common cold in human populations (39). Nevertheless, we cannot rule out adenoviruses or other undetected co-infecting agents as contributing factors because such infections can enhance the clinical severity of rhinovirus C (7). In this regard, we note that simian immunodeficiency virus, which can cause immunodeficiency in wild chimpanzees (44), was not detected and is thought to be absent from this chimpanzee population (45).

Rhinovirus C is genetically diverse and common among the human populations of sub-Saharan Africa (9). Kibale National Park, wherein the home range of the Kanyawara community lies, is frequented by researchers, tourists, and persons living at the periphery of the park, and chimpanzees sometimes leave the park to raid crops in local villages. Accordingly, myriad pathways exist by which the Kanyawara chimpanzees could have been exposed to rhinovirus C from humans. Current guidelines for visiting wild apes in Uganda and other countries are based in part on generalized risks for respiratory disease transmission from humans (e.g., quarantine periods for arriving travelers are mandated at Kanyawara) (46). We suggest that specific consideration of rhinovirus C and its particular biologic attributes might improve such guidelines. For example, rhinovirus virions are nonenveloped and might therefore persist in the environment for extended periods of time, even maintaining infectivity after desiccation (47).

Long-term records from Kanyawara indicate that respiratory disease outbreaks of varying severity have occurred approximately 2 times per year for at least the past decade, with fatalities occurring every ≈ 2 years, typically among young animals <5 years of age and adults >35 years of age (R.W. Wrangham, unpub. data). Observations also suggest that respiratory disease outbreaks have occurred in other chimpanzee communities in Kibale at the same times as outbreaks in the Kanyawara community. Kibale contains $\approx 1,500$ chimpanzees in ≈ 10 – 20 interconnected communities; that such a population could sustain rhinovirus C or other similar infectious agents in cycles of within-group and between-group transmission is possible, at least for limited time periods (39). If respiratory viruses of human origin can circulate independently in wild chimpanzee populations of sufficient size, this fact would be troublesome not only for chimpanzee conservation but also for human health, in that chimpanzees could also serve as a reservoir for human infections.

Although the mandate that researchers and tourists visiting wild apes wear facemasks is controversial, this practice has successfully reduced the transmission of rhinoviruses and other co-infecting agents that exacerbate rhinovirus clinical severity in hospital settings (48). Similarly, proper hygiene and the use of hand sanitizer effectively reduce the amounts of rhinovirus on human fingers (49). Decades ago, captive chimpanzees were used as study subjects in biomedical research intended to evaluate putative rhinovirus prevention and treatment options (36,37,50). Our results suggest that these investigations could ultimately benefit the wild relatives of the chimpanzees that were the original subjects of these laboratory experiments. We advocate building upon existing data to engineer novel interventions and prevention strategies for rhinovirus infections in both humans and wild apes.

Acknowledgments

We thank the Uganda Wildlife Authority and Uganda National Council of Science and Technology for permission to conduct this research. We also thank the field assistants of the Kibale Chimpanzee Project for invaluable help with fieldwork and Caroline Buckee for assistance with epidemiologic analyses.

This work was funded in part by the National Institutes of Health (NIH) grant TW009237 (to T.L.G.) as part of the joint NIH–National Science Foundation (NSF) Ecology of Infectious Disease program; by NIH National Institute of Allergy and Infectious Disease grant U19AI104317 (to A.C.P., S.B., K.E.W., and J.E.G.); by NIH–National Institute of Aging grant 1R01AG049395 (to M.E.T., R.W.W., M.N.M., and T.L.G.); and by the University of Wisconsin–Madison John D. MacArthur Fellowship Program (to T.L.G.). Long-term research on the Kanyawara chimpanzee community of Kibale National Park has been funded by the NSF through grants 1355014 and 0849380 (to M.N.M., R.W.W., and M.E.T.); the Leakey Foundation (to M.N.M., R.W.W., and M.E.T.); Harvard University (to R.W.W.); and University of New Mexico (to M.N.M. and M.E.T.). Graduate fellowship support (to E.J.S.) was provided by the NSF Graduate Research Fellowship Program and the International Primatological Society. The funders had no role in study design, data collection and analysis, decision to publish, or preparation of the manuscript.

About the Author

Mr. Scully is a doctoral student at Harvard University in Cambridge, Massachusetts. In his research, he seeks to elucidate the ecologic, epidemiologic, and molecular barriers to cross-species pathogen transmission among human and nonhuman primates in systems ranging from *Plasmodium* to viruses.

References

1. Jacobs SE, Lamson DM, St. George K, Walsh TJ. Human rhinoviruses. Clin Microbiol Rev. 2013;26:135–62. <http://dx.doi.org/10.1128/CMR.00077-12>

2. Steinke JW, Borish L. Immune responses in rhinovirus-induced asthma exacerbations. *Curr Allergy Asthma Rep.* 2016;16:78. <http://dx.doi.org/10.1007/s11882-016-0661-2>
3. Palmenberg AC, Gern JE. Classification and evolution of human rhinoviruses. *Methods Mol Biol.* 2015;1221:1–10. http://dx.doi.org/10.1007/978-1-4939-1571-2_1
4. Saraya T, Kurai D, Ishii H, Ito A, Sasaki Y, Niwa S, et al. Epidemiology of virus-induced asthma exacerbations: with special reference to the role of human rhinovirus. *Front Microbiol.* 2014;5:226. <http://dx.doi.org/10.3389/fmicb.2014.00226>
5. Bizzintino J, Lee WM, Laing IA, Vang F, Pappas T, Zhang G, et al. Association between human rhinovirus C and severity of acute asthma in children. *Eur Respir J.* 2011;37:1037–42. <http://dx.doi.org/10.1183/09031936.00092410>
6. Liu Y, Hill MG, Klose T, Chen Z, Watters K, Bochkov YA, et al. Atomic structure of a rhinovirus C, a virus species linked to severe childhood asthma. *Proc Natl Acad Sci U S A.* 2016;113:8997–9002. <http://dx.doi.org/10.1073/pnas.1606595113>
7. Bochkov YA, Watters K, Ashraf S, Griggs TF, Devries MK, Jackson DJ, et al. Cadherin-related family member 3, a childhood asthma susceptibility gene product, mediates rhinovirus C binding and replication. *Proc Natl Acad Sci U S A.* 2015;112:5485–90. <http://dx.doi.org/10.1073/pnas.1421178112>
8. Mathieson I, Lazaridis I, Rohland N, Mallick S, Patterson N, Roodenberg SA, et al. Genome-wide patterns of selection in 230 ancient Eurasians. *Nature.* 2015;528:499–503. <http://dx.doi.org/10.1038/nature16152>
9. Palmenberg AC. Rhinovirus C, asthma, and cell surface expression of virus receptor CDHR3. *J Virol.* 2017;91:e00072-17. <http://dx.doi.org/10.1128/JVI.00072-17>
10. Sharp PM, Rayner JC, Hahn BH. Evolution. Great apes and zoonoses. *Science.* 2013;340:284–6. <http://dx.doi.org/10.1126/science.1236958>
11. Köndgen S, Kühl H, N’Goran PK, Walsh PD, Schenk S, Ernst N, et al. Pandemic human viruses cause decline of endangered great apes. *Curr Biol.* 2008;18:260–4. <http://dx.doi.org/10.1016/j.cub.2008.01.012>
12. Köndgen S, Schenk S, Pauli G, Boesch C, Leendertz FH. Noninvasive monitoring of respiratory viruses in wild chimpanzees. *EcoHealth.* 2010;7:332–41. <http://dx.doi.org/10.1007/s10393-010-0340-z>
13. Palacios G, Lowenstine LJ, Cranfield MR, Gilardi KV, Spelman L, Lukasik-Braum M, et al. Human metapneumovirus infection in wild mountain gorillas, Rwanda. *Emerg Infect Dis.* 2011;17:711–3. <http://dx.doi.org/10.3201/eid1704.100883>
14. Grützmacher KS, Köndgen S, Keil V, Todd A, Feistner A, Herbing I, et al. Codetection of respiratory syncytial virus in habituated wild western lowland gorillas and humans during a respiratory disease outbreak. *EcoHealth.* 2016;13:499–510. <http://dx.doi.org/10.1007/s10393-016-1144-6>
15. Toohey-Kurth K, Sibley SD, Goldberg TL. Metagenomic assessment of adventitious viruses in commercial bovine sera. *Biologicals.* 2017;47:64–8. <http://dx.doi.org/10.1016/j.biologicals.2016.10.009>
16. Kumar S, Stecher G, Tamura K. MEGA7: Molecular Evolutionary Genetics Analysis version 7.0 for bigger datasets. *Mol Biol Evol.* 2016;33:1870–4. <http://dx.doi.org/10.1093/molbev/msw054>
17. Martin DP, Murrell B, Golden M, Khoosal A, Muhire B. RDP4: detection and analysis of recombination patterns in virus genomes. *Virus Evol.* 2015;1:vev003. <http://dx.doi.org/10.1093/ve/vev003>
18. Katoh K, Misawa K, Kuma K, Miyata T. MAFFT: a novel method for rapid multiple sequence alignment based on fast Fourier transform. *Nucleic Acids Res.* 2002;30:3059–66. <http://dx.doi.org/10.1093/nar/gkf436>
19. Abascal F, Zardoya R, Telford MJ. TranslatorX: multiple alignment of nucleotide sequences guided by amino acid translations. *Nucleic Acids Res.* 2010;38(suppl_2):W7–13. <http://dx.doi.org/10.1093/nar/gkq291>
20. Talavera G, Castresana J, Kjer K, Page R, Sullivan J. Improvement of phylogenies after removing divergent and ambiguously aligned blocks from protein sequence alignments. *Syst Biol.* 2007;56:564–77. <http://dx.doi.org/10.1080/10635150701472164>
21. Santorum JM, Darriba D, Taboada GL, Posada D. jmodeltest.org: selection of nucleotide substitution models on the cloud. *Bioinformatics.* 2014;30:1310–1. <http://dx.doi.org/10.1093/bioinformatics/btu032>
22. Guindon S, Dufayard JF, Lefort V, Anisimova M, Hordijk W, Gascuel O. New algorithms and methods to estimate maximum-likelihood phylogenies: assessing the performance of PhyML 3.0. *Syst Biol.* 2010;59:307–21. <http://dx.doi.org/10.1093/sysbio/syq010>
23. Kronic N, Merante F, Yaghoobian S, Himsworth D, Janeczko R. Advances in the diagnosis of respiratory tract infections: role of the Luminex xTAG respiratory viral panel. *Ann N Y Acad Sci.* 2011;1222:6–13. <http://dx.doi.org/10.1111/j.1749-6632.2011.05964.x>
24. Bochkov YA, Gern JE. Clinical and molecular features of human rhinovirus C. *Microbes Infect.* 2012;14:485–94. <http://dx.doi.org/10.1016/j.micinf.2011.12.011>
25. Prado-Martinez J, Sudmant PH, Kidd JM, Li H, Kelley JL, Lorente-Galdos B, et al. Great ape genetic diversity and population history. *Nature.* 2013;499:471–5. <http://dx.doi.org/10.1038/nature12228>
26. Althaus CL. Estimating the reproduction number of Ebola virus (EBOV) during the 2014 outbreak in West Africa. *PLoS Curr.* 2014;6:6. <http://dx.doi.org/10.1371/currents.outbreaks.91afb5e0f279e7f29e7056095255b288>
27. Sikazwe CT, Chidlow GR, Imrie A, Smith DW. Reliable quantification of rhinovirus species C using real-time PCR. *J Virol Methods.* 2016;235:65–72. <http://dx.doi.org/10.1016/j.jviromet.2016.05.014>
28. Bochkov YA, Grindle K, Vang F, Evans MD, Gern JE. Improved molecular typing assay for rhinovirus species A, B, and C. *J Clin Microbiol.* 2014;52:2461–71. <http://dx.doi.org/10.1128/JCM.00075-14>
29. Harvala H, McIntyre CL, Imai N, Clasper L, Djoko CF, LeBreton M, et al. High seroprevalence of enterovirus infections in apes and old world monkeys. *Emerg Infect Dis.* 2012;18:283–6. <http://dx.doi.org/10.3201/eid1802.111363>
30. Sadeuh-Mba SA, Bessaud M, Joffret ML, Endegue Zanga MC, Balanant J, Mpoudi Ngole E, et al. Characterization of enteroviruses from non-human primates in Cameroon revealed virus types widespread in humans along with candidate new types and species. *PLoS Negl Trop Dis.* 2014;8:e3052. <http://dx.doi.org/10.1371/journal.pntd.0003052>
31. Lu X, Erdman DD. Molecular typing of human adenoviruses by PCR and sequencing of a partial region of the hexon gene. *Arch Virol.* 2006;151:1587–602. <http://dx.doi.org/10.1007/s00705-005-0722-7>
32. Nkogue CN, Horie M, Fujita S, Ogino M, Kobayashi Y, Mizukami K, et al. Molecular epidemiological study of adenovirus infecting western lowland gorillas and humans in and around Moukalaba-Doudou National Park (Gabon). *Virus Genes.* 2016;52:671–8. <http://dx.doi.org/10.1007/s11262-016-1360-8>
33. Seimon TA, Olson SH, Lee KJ, Rosen G, Ondzie A, Cameron K, et al. Adenovirus and herpesvirus diversity in free-ranging great apes in the Sangha region of the Republic of Congo. *PLoS One.* 2015;10:e0118543. <http://dx.doi.org/10.1371/journal.pone.0118543>
34. Wevers D, Metzger S, Babweteera F, Bieberbach M, Boesch C, Cameron K, et al. Novel adenoviruses in wild primates: a high level of genetic diversity and evidence of zoonotic transmissions. *J Virol.* 2011;85:10774–84. <http://dx.doi.org/10.1128/JVI.00810-11>
35. Hoppe E, Pauly M, Gillespie TR, Akoua-Koffi C, Hohmann G, Fruth B, et al. Multiple cross-species transmission events of human adenoviruses (HAdV) during hominine evolution. *Mol Biol Evol.* 2015;32:2072–84. <http://dx.doi.org/10.1093/molbev/msv090>

36. Dick EC. Experimental infections of chimpanzees with human rhinovirus types 14 and 43. *Proc Soc Exp Biol Med*. 1968;127:1079–81. <http://dx.doi.org/10.3181/00379727-127-32875>
37. Dick EC, Dick CR. A subclinical outbreak of human rhinovirus 31 infection in chimpanzees. *Am J Epidemiol*. 1968;88:267–72. <http://dx.doi.org/10.1093/oxfordjournals.aje.a120885>
38. Goodall J. The chimpanzees of Gombe: patterns of behavior. Cambridge: Harvard University Press; 1986.
39. Eggo RM, Scott JG, Galvani AP, Meyers LA. Respiratory virus transmission dynamics determine timing of asthma exacerbation peaks: evidence from a population-level model. *Proc Natl Acad Sci U S A*. 2016;113:2194–9. <http://dx.doi.org/10.1073/pnas.1518677113>
40. Williams JM, Lonsdorf EV, Wilson ML, Schumacher-Stankey J, Goodall J, Pusey AE. Causes of death in the Kasekela chimpanzees of Gombe National Park, Tanzania. *Am J Primatol*. 2008; 70:766–77. <http://dx.doi.org/10.1002/ajp.20573>
41. Griggs TF, Bochkov YA, Nakagome K, Palmenberg AC, Gern JE. Production, purification, and capsid stability of rhinovirus C types. *J Virol Methods*. 2015;217:18–23. <http://dx.doi.org/10.1016/j.jviromet.2015.02.019>
42. Honkanen H, Oikarinen S, Peltonen P, Simell O, Ilonen J, Veijola R, et al. Human rhinoviruses including group C are common in stool samples of young Finnish children. *J Clin Virol*. 2013;56:334–8. <http://dx.doi.org/10.1016/j.jcv.2012.11.020>
43. Roy S, Vandenberghe LH, Kryazhimskiy S, Grant R, Calcedo R, Yuan X, et al. Isolation and characterization of adenoviruses persistently shed from the gastrointestinal tract of non-human primates. *PLoS Pathog*. 2009;5:e1000503. <http://dx.doi.org/10.1371/journal.ppat.1000503>
44. Keele BF, Jones JH, Terio KA, Estes JD, Rudicell RS, Wilson ML, et al. Increased mortality and AIDS-like immunopathology in wild chimpanzees infected with SIVcpz. *Nature*. 2009;460:515–9. <http://dx.doi.org/10.1038/nature08200>
45. Santiago ML, Lukasik M, Kamenya S, Li Y, Bibollet-Ruche F, Bailes E, et al. Foci of endemic simian immunodeficiency virus infection in wild-living eastern chimpanzees (*Pan troglodytes schweinfurthii*). *J Virol*. 2003;77:7545–62. <http://dx.doi.org/10.1128/JVI.77.13.7545-7562.2003>
46. Gilardi KV, Gillespie TR, Leendertz FH, Macfie EJ, Travis DA, Whittier CA, et al. Best practice guidelines for health monitoring and disease control in great ape populations. Gland (Switzerland): IUCN Special Survival Commission Primate Specialist Group; 2015.
47. Reagan KJ, McGeady ML, Crowell RL. Persistence of human rhinovirus infectivity under diverse environmental conditions. *Appl Environ Microbiol*. 1981;41:618–20.
48. Bischoff WE, Tucker BK, Wallis ML, Reboussin BA, Pfaller MA, Hayden FG, et al. Preventing the airborne spread of *Staphylococcus aureus* by persons with the common cold: effect of surgical scrubs, gowns, and masks. *Infect Control Hosp Epidemiol*. 2007;28:1148–54. <http://dx.doi.org/10.1086/520734>
49. Turner RB, Fuls JL, Rodgers ND. Effectiveness of hand sanitizers with and without organic acids for removal of rhinovirus from hands. *Antimicrob Agents Chemother*. 2010;54:1363–4. <http://dx.doi.org/10.1128/AAC.01498-09>
50. Huguenel ED, Cohn D, Dockum DP, Greve JM, Fournel MA, Hammond L, et al. Prevention of rhinovirus infection in chimpanzees by soluble intercellular adhesion molecule-1. *Am J Respir Crit Care Med*. 1997;155:1206–10. <http://dx.doi.org/10.1164/ajrcem.155.4.9105055>

Address for correspondence: Tony L. Goldberg, University of Wisconsin–Madison, Department of Pathobiological Sciences, 1656 Linden Dr, Madison, WI 53706, USA; email: tony.goldberg@wisc.edu

July 2016: Zoonoses



- Senecavirus A in Pigs, United States, 2015
- Two Linked Enteroinvasive *Escherichia coli* Outbreaks, Nottingham, United Kingdom, June 2014
- Porcine Bocavirus Infection Associated with Encephalomyelitis in a Pig, Germany
- African Swine Fever Epidemic, Poland, 2014–2015
- Turtle-Associated Salmonellosis, United States, 2006–2014
- Pregnancy, Labor, and Delivery after Ebola Virus Disease and Implications for Infection Control in Obstetric Services, United States, 2015
- Response to Middle East Respiratory Syndrome Coronavirus, Abu Dhabi, United Arab Emirates, 2013–2014
- Current Guidelines, Common Clinical Pitfalls, and Future Directions for Laboratory Diagnosis of Lyme Disease, United
- *Tropheryma whipplei* as a Cause of Epidemic Fever, Senegal, 2010–2012



- Hepatitis E Virus in Dromedaries, North and East Africa, United Arab Emirates and Pakistan, 1983–2015
- Heatwave-Associated Vibriosis, Sweden and Finland, 2014
- Vesicular Disease in 9-Week-Old Pigs Experimentally Infected with Senecavirus A
- High Incidence of Chikungunya Virus and Frequency of Viremic Blood Donations during Epidemic, Puerto Rico, USA, 2014



<https://wwwnc.cdc.gov/eid/articles/issue/22/7/table-of-contents>

EMERGING INFECTIOUS DISEASES

Lethal Respiratory Disease Associated with Human Rhinovirus C in Wild Chimpanzees, Uganda, 2013

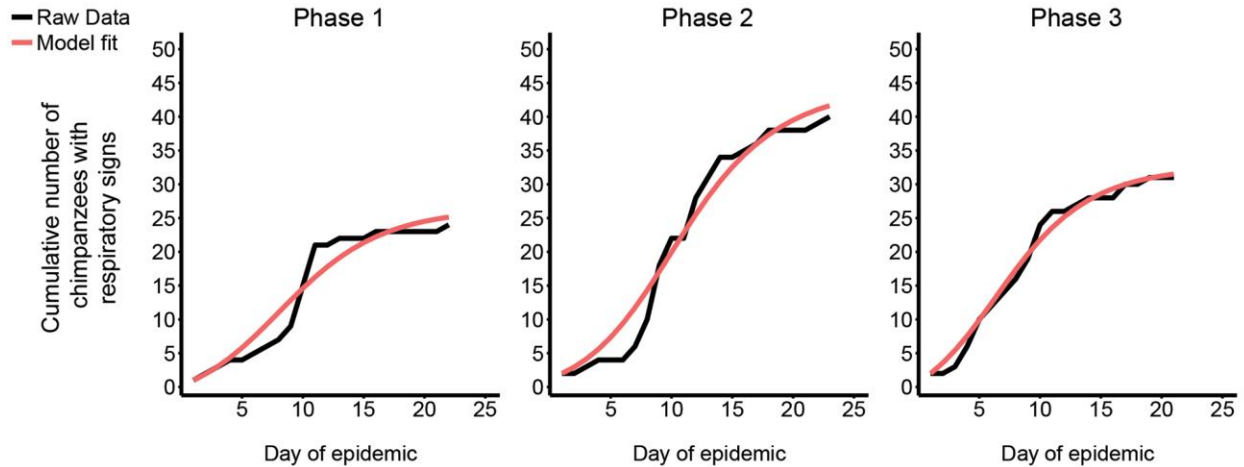
Technical Appendix

Technical Appendix Table. RV-C sequences used in phylogenetic analysis*

Accession	Virus	Isolate
NC_001617	RV-A89	RV-A89
NC_001490	RV-B14	RV-B14
NC_009996	RV-C04	24
KY624849	RV-C45†	RV-C45-cpz1–2013
JN837686	RV-C45	RV-C45-p1084-s3920–2000
DQ875932	RV-C07	NY-074
EF077279	RV-C01	NAT001
EF077280	RV-C02	NAT045
EF186077	RV-C03	RV-QPM
EF582386	RV-C05	25
EF582387	RV-C06	26
EU840952	RV-C11	CL-170085
GQ223227	RV-C08	N4
GQ223228	RV-C09	N10
GQ323774	RV-C10	QCE
GU219984	RV-C15	W10
HQ123440	RV-C35	CU072
HQ123443	RV-C01	CU184
JF317013	RV-C25	LZ269
JF317014	RV-C15	LZY79
JF317015	RV-C51	LZ508
JF317016	RV-C06	LZ651
JF317017	RV-C12	LZY101
JF907574	RV-C49	RV-C49-p1102-sR889–2008
JN205461	RV-C39	WA823M02
JN798567	RV-C03	RV-C03-p1280-s6359–1999
JN837688	RV-C15	RV-C15-p1259-s2935–1999
JN990702	RV-C06	RV-C06-p1031-sR2724–2009
JQ245968	RV-C02	RV-C02-p1264-s3775–1999
JX074056	RV-C43	RV-C43-p1154-sR1124–2009
JX291115	RV-C51	JAL-1
KF734978	RV-C06	1515-MY-10
KF958310	RV-C02	6331
KF958311	RV-C41	2536
KJ675505	RV-C42	570-MY-10
KJ675506	RV-C23	8713-MY-10
KJ675507	RV-C22	3430-MY-10
KM486097	RV-C34	Mex14
KP282614	RV-C54	C54-D3490
KP890662	RV-C01	7383-MY-10
KP890663	RV-C12	3805-MY-10
KP890664	RV-C26	8097-MY-11
KX348031	RV-C35	18455–35

*RV-C, rhinovirus C.

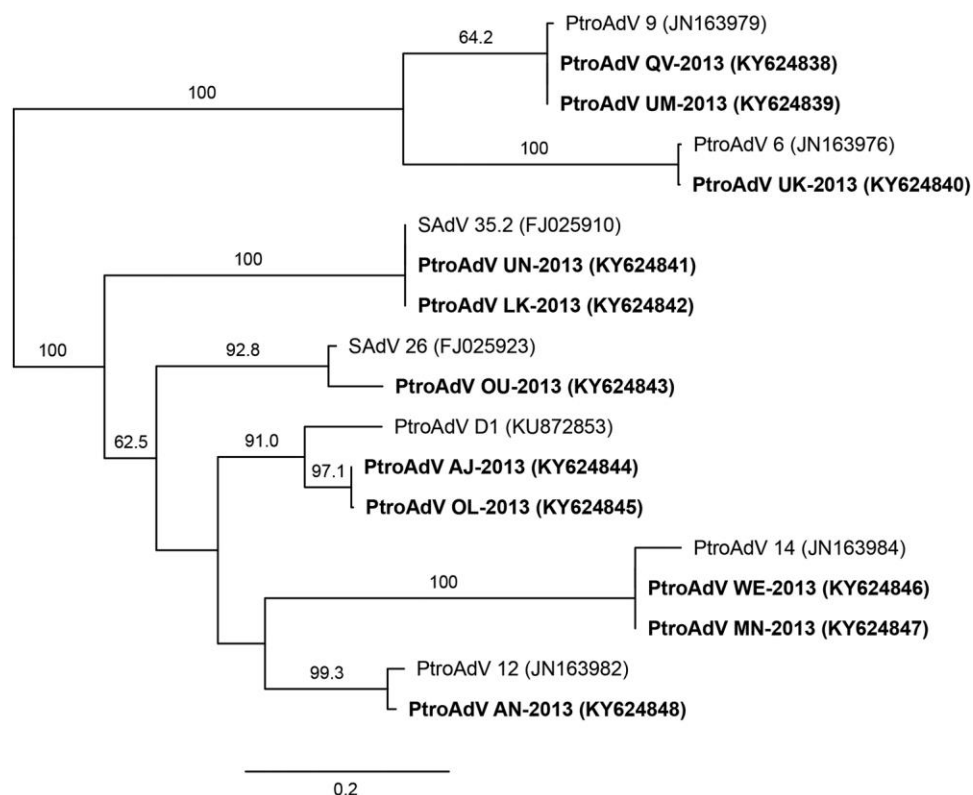
†Isolate from current manuscript.



Technical Appendix Figure 1. Epidemiologic transmission model of the 2013 chimpanzee respiratory disease outbreak. We constructed an SIR (susceptible-infectious-removed) model using the following set of ordinary differential equations:

$$\begin{aligned}\frac{dS}{dt} &= \frac{-\beta SI}{N} \\ \frac{dI}{dt} &= \frac{\beta SI}{N} - \gamma I \\ \frac{dR}{dt} &= \gamma I\end{aligned}$$

where S is the number of susceptible chimpanzees, I the number of infectious chimpanzees, and R the number of recovered chimpanzees; β is the daily transmission probability; γ is the recovery rate; and N is the total number of chimpanzees in the population (i.e., $N = S + I + R$). We estimated β and γ and associated CIs by fitting the SIR model to observed cumulative incidence data (1) for each phase of the outbreak, and we assumed a total population size of 50 chimpanzees. Here, the basic reproductive number, R_0 , is calculated as $R_0 = \frac{\beta}{\gamma}$. Graphs show model predictions superimposed on data from observations of clinical signs for the 3 phases of the epidemic.



Technical Appendix Figure 2. Maximum-likelihood phylogenetic tree of adenoviruses from fecal samples of wild chimpanzees collected during the respiratory disease epidemic, Uganda, 2013. We constructed the tree from a codon-based alignment (528 positions) of partial adenovirus hexon gene sequences using the same methods as for the tree in Figure 3. Included are sequences generated during this study (bold) and their closest relatives (GenBank accession nos. in parentheses). Numbers above branches indicate statistical confidence on the basis of 1,000 bootstrap replicates (only bootstrap values $\geq 50\%$ are shown); scale bar indicates nucleotide substitutions per site.

Reference

1. Althaus CL, Low N, Musa EO, Shuaib F, Gsteiger S. Ebola virus disease outbreak in Nigeria: transmission dynamics and rapid control. *Epidemics*. 2015;11:80–4. [PubMed](https://pubmed.ncbi.nlm.nih.gov/25711111/)
<http://dx.doi.org/10.1016/j.epidem.2015.03.001>