

# Role of Food Insecurity in Outbreak of Anthrax Infections among Humans and Hippopotamuses Living in a Game Reserve Area, Rural Zambia

Mark W. Lehman,<sup>1</sup> Allen S. Craig,<sup>2</sup> Constantine Malama, Muzala Kapina-Kany'anga, Philip Malenga, Fanny Munsaka, Sergio Muwowo, Sean Shadomy, Melissa A. Marx<sup>3</sup>

In September 2011, a total of 511 human cases of anthrax (*Bacillus anthracis*) infection and 5 deaths were reported in a game management area in the district of Chama, Zambia, near where 85 hippopotamuses (*Hippopotamus amphibius*) had recently died of suspected anthrax. The human infections generally responded to antibiotics. To clarify transmission, we conducted a cross-sectional, interviewer-administered household survey in villages where human anthrax cases and hippopotamus deaths were reported. Among 284 respondents, 84% ate hippopotamus meat before the outbreak. Eating, carrying, and preparing meat were associated with anthrax infection. Despite the risk, 23% of respondents reported they would eat meat from hippopotamuses found dead again because of food shortage (73%), lack of meat (12%), hunger (7%), and protein shortage (5%). Chronic food insecurity can lead to consumption of unsafe foods, leaving communities susceptible to zoonotic infection. Interagency cooperation is necessary to prevent outbreaks by addressing the root cause of exposure, such as food insecurity.

During August–September 2011, a total of 85 hippopotamuses (*Hippopotamus amphibius*) died of suspected anthrax (*Bacillus anthracis*) infection in a game management area along the South Luangwa River near the district of Chama in northeastern Zambia (Figure 1) (1). At least 521 suspected human anthrax cases and 5 deaths were reported near this area during this period. Residents of the area near the river had reportedly found dead hippopotamuses and

subsequently butchered, cooked, and consumed meat from the dead animals, which was thought to be the cause of the human outbreak. As previously reported, most human cases of anthrax infection were cutaneous infections, with most patients initially having papular lesions (95%) and the rest having lymphadenopathy and gastrointestinal symptoms (1). Most cases resolved after the patient received a course of oral ciprofloxacin. Some additional animal species were reported by local wildlife staff to have been affected, but no empiric data were found to corroborate those reports.

Anthrax outbreaks associated with animals are common and reported worldwide. Herbivores are thought to have onset of disease after ingesting spores in soil, water, or on vegetation. Reports of anthrax outbreaks occurring in wild and domestic animals in Africa have usually been associated with the dry season and have stopped with the onset of the rainy season (2,3). Outbreaks can begin with wildlife, expand into domestic livestock, and ultimately affect humans (4,5). When anthrax outbreaks occur in national parks in Africa and are limited to the wildlife, the outbreak is usually allowed to run its natural course without any human intervention. Multiple challenges make it impractical to vaccinate free-ranging wildlife populations; sometimes vaccine programs are initiated but usually only to protect endangered species or populations at high risk (6–8).

Anthrax outbreaks associated with hippopotamuses have been reported previously in Zambia, Uganda, Zimbabwe, and South Africa (3,9–11). Human cases associated with wildlife outbreaks in Africa are generally not well-documented but are known to occur (5).

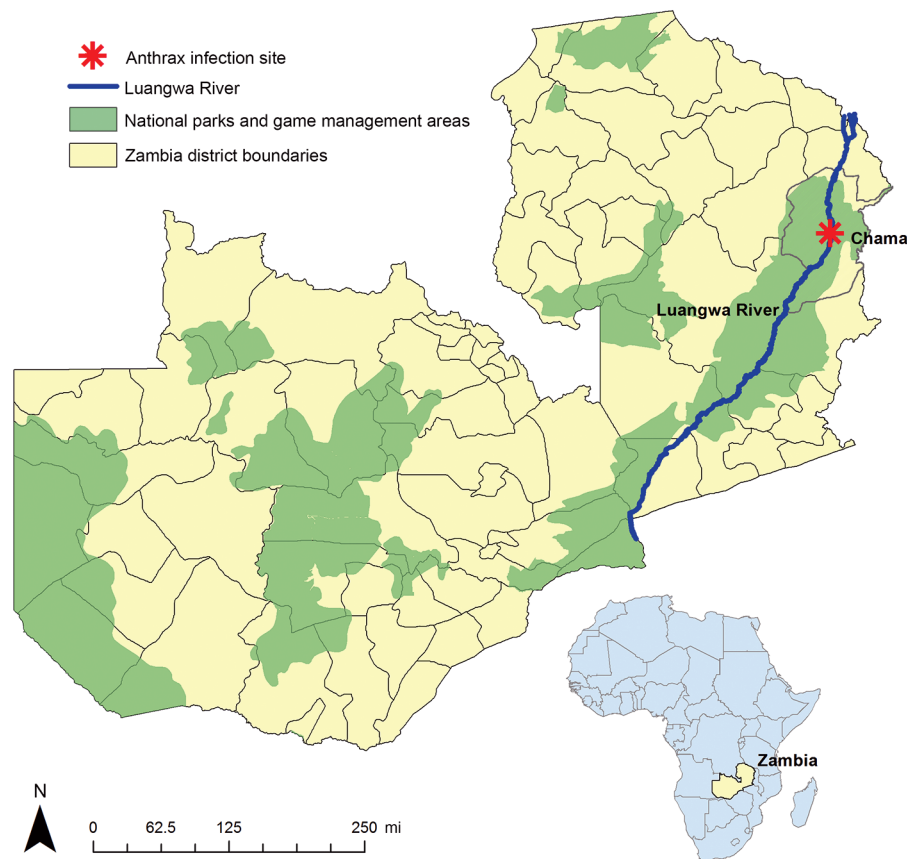
Author affiliations: Centers for Disease Control and Prevention, Atlanta, Georgia, USA (M.W. Lehman, S. Shadomy); Centers for Disease Control and Prevention, Lusaka, Zambia (A.S. Craig, C. Malama, M.A. Marx); Ministry of Health, Lusaka, Zambia (M. Kapina-Kany'anga, P. Malenga); Provincial Health Office, Chipata, Zambia (F. Munsaka); District Health Office, Chama, Zambia (S. Muwowo)

<sup>1</sup>Current affiliation: US Air Force School of Aerospace Medicine, Wright-Patterson AFB, Ohio, USA.

<sup>2</sup>Current affiliation: Centers for Disease Control and Prevention, Atlanta, Georgia, USA.

<sup>3</sup>Current affiliation: Johns Hopkins Bloomberg School of Public Health, Baltimore, Maryland, USA

DOI: <https://doi.org/10.3201/eid2309.161597>



**Figure 1.** Location of an anthrax outbreak that originated in a game management area along the South Luangwa River in the Chama District of northeastern Zambia, 2011. Inset map shows location of Zambia in Africa.

Zambia's Chama District (population 103,894) borders Malawi, in what is currently known as Muchinga Province (Figure 1) (12). Nearly 93% of the district's residents live in rural areas, and overall population density is 5.9 persons/km<sup>2</sup> (12). The rural population resides in small villages largely accessible only by all-terrain vehicles. Communication in many parts of the district is only possible through 2-way radios. Chama is within a game management area that includes the South Luangwa River and contains rich flora and fauna, including hippopotamuses but also other foragers and predators. Because of Chama's status as a game management area, residents are not permitted to protect crops from foragers or hunt on area grounds, which are overseen by the Zambia Wildlife Authority (ZAWA). Food and water are scarce for animals and humans during Zambia's dry season, generally May–November. A delay in the annual rainy season, usually December–March, can put farmers at risk for low crop production, as was the case in 2011 (13). During this period, animals forage deep into riverbeds in search of water and food, digging up and activating dormant anthrax spores. Residents, for whom food can also be scarce under these conditions, have been known to consume animals they find dead in their area (Figure 2).

In September 2011, a few months after the first human anthrax cases were reported in the district, a team of

epidemiologists, health officers, and environmental health technicians from the Zambia Central Ministry of Health, the Eastern Provincial Health Office, and Chama District Health Office conducted a preliminary investigation of the possible outbreak under their jurisdiction. Shortly thereafter, upon formal request, epidemiologists from the US Centers for Disease Control and Prevention joined the Zambia team to conduct this outbreak investigation in an effort to further inform prevention activities.

Specifically, we aimed to shorten the outbreak by identifying and eliminating any remaining exposures and by recommending mitigation and prevention strategies for this and future outbreaks. We also wanted to determine the riskiest exposures so that educational messages could be properly tailored. Here we report the results of a household survey used to identify the most common exposures associated with human anthrax and to determine how food insecurity contributed to consumption of the anthrax-contaminated meat and anthrax infection among residents of this game management area.

## Methods

We conducted a cross-sectional, interviewer-administered household survey in 3 villages with access to riverbeds where hippopotamuses died: Chikwa, Chigoma, and Chimpamaba.



**Figure 2.** A family searching for water by digging deep into a dried riverbed during the dry season in northeastern Zambia.

These villages' estimated combined population of adults  $\geq 15$  years of age is 6,553 (12). A questionnaire (online Technical Appendix, <https://wwwnc.cdc.gov/EID/article/23/9/16-1597-Techapp1.pdf>) was developed in English and translated into Senga, the local language spoken in these areas. The questionnaire was designed to complement and expand on the data initially collected in the district by local public health officials. It captured age, sex, and occupation and yes/no responses to several questions about symptoms, exposure to hippopotamuses, food sources, and whether respondents would eat meat from an animal they found dead. Those who responded that they would eat animals they found dead were asked an open-ended question to elucidate their reasons for doing so. Interviewers and supervisors were trained on procedures for conducting the survey before fieldwork commenced. Interviewers and supervisors tested questions on each other, which resulted in improvements to question wording. They also practiced administering the survey on one another before interviewing community participants.

Three teams administered the questionnaire, each team made up of a trained District Health Office staff supervisor and 6 trained volunteer interviewers. Each team was assigned to 1 of the 3 communities. Interviewers selected every fifth household they encountered in each village for inclusion and interviewed all adults  $\geq 15$  years of age living in selected households. No incentives were offered for participation. Interviewers read each prospective participant a description of the survey, highlighting that it was voluntary and could be stopped at any time by request. The Zambia Ministry of Health deemed this outbreak investigation to be exempt from Research Ethics Committee review. The investigation protocol was reviewed by the CDC-Zambia office and CDC's National Center for Emerging and Zoonotic Infectious Diseases, in accordance with institutional review policies. The protocol was determined to be non-research under 45 CFR 46 §102(d) and therefore did not require Institutional Review Board review.



**Figure 3.** Hippopotamus bones and hides left behind after butchering of animals that were found dead on a river bank and later identified as the source of anthrax causing an outbreak among humans in northeastern Zambia, 2011.

Data from completed questionnaires were entered into an Access database (Microsoft, Redmond, WA, USA) and analyzed by using Epi Info version 3.5.1 (CDC, Atlanta, GA, USA). We defined a case as illness in a respondent who reported having had anthrax infection diagnosed by a healthcare worker since July 2011 and compared demographic characteristics and risk factors by case status by using  $\chi^2$  and *t* tests. Associations were quantified with simple and multivariable logistic regression.

The second part of the investigation involved going into the field to view 3 of the areas where most of the infected hippopotamuses were found. The site visits occurred within about a month after the outbreak and were conducted to better understand the topography and the range of the animals and to identify any additional animal species affected by anthrax. All sites were areas frequented by the exposed human populations and were  $< 1$  km from residents' homes. The site surveys were not exhaustive; they focused on areas with known human-animal interaction (Figure 3) and recently discovered dead hippopotamuses (Figure 4). N95 masks, Tyvek suits, and rubber boots were worn



**Figure 4.** A dead hippopotamus floating down the South Luangwa River in northeastern Zambia during an anthrax outbreak in 2011.

during site visits when members exited vehicles. We used these observations and the results of the household-level surveys to develop recommendations to mitigate and control future spread of the infection to humans, animals, and the environment.

## Results

All 284 household members ( $\approx 4\%$  of the population of the villages) in the 87 households selected agreed to be interviewed (mean 3 participants per household). In total, 31 (11%) of participants reported having anthrax infection diagnosed by a healthcare worker since July 2011; another 137 (48%) reported not having anthrax infection diagnosed, and 116 (41%) did not know whether they had anthrax infection diagnosed. We assumed that those who did not know did not have anthrax infection diagnosed. Male respondents accounted for 48% ( $n = 136$ ) of total participants but 68% ( $n = 21$ ) of those reporting having anthrax infection diagnosed, compared with 36% of cases occurring among female respondents ( $p < 0.001$ ) (Table 1). Of the 96 persons who answered the occupation-related question, 91 (95%) listed their occupation as farmer. This finding was not surprising given the rural setting of the outbreak. Because the responses for occupation were so homogenous, occupation was not evaluated as a risk factor. The median age of persons having received an anthrax diagnosis since July 2011 was 33 years, similar to the median age of all participants (32 years) (Table 1). The most common signs and symptoms reported by those reporting having been diagnosed with anthrax included myalgia, skin lesions, fatigue, diarrhea, and fever (Table 2).

Most participants (238 [84%]) reported having eaten hippopotamus meat at the time of the outbreak. Participants who ate the meat were 9 times (95% CI 1.3–369.3 times) more likely to report having had anthrax than those who did not eat the meat. Carrying hippopotamus meat (odds ratio 5.3, 95% CI 2.0–15.4) and preparing it for cooking (odds ratio 3.3, 95% CI 1.1–13.7) were also significantly associated with anthrax infection. After controlling for having eaten the hippopotamus meat, 3 activities (skinning, carrying, and cutting the meat) were all still significantly associated with reported anthrax infection (Table 3).

Most people surveyed (216 [76%]) reported they would not eat meat from a dead hippopotamus knowing

now that it can cause anthrax infection, but 65 (23%) of all respondents and 5 (16%) of the 31 respondents in whom cases were reported said that they would eat meat from a dead hippopotamus despite this knowledge. Of the 65 participants saying they would eat the meat if given the chance again, reasons given were because they lacked other options for a side dish (“relish”) to Nshima, the maize-based staple food (44 [73%]); lacked meat (14 [22%]); suffered from hunger (4 [7%]); or lacked protein (3 [5%]), in addition to other less commonly reported reasons (Table 4).

The investigation team also visited several field sites. At 1 of the sites, previous human interaction with dead hippopotamuses was evident. Bones and hides were strewn across a large area. Evidence of multiple campfires were found in the vicinity of the hippopotamus remains (Figure 3). According to a Zambia Ministry of Health official and others on the investigation team who had visited the site earlier, the strewn animal parts appeared to have been from the initial human contact with the dead hippopotamuses. Residents appeared to stop handling dead hippopotamuses after human anthrax cases were detected and linked to contact with hippopotamus carcasses.

## Discussion

A large outbreak of cutaneous anthrax among humans in the Chama District of Zambia was associated with physical contact with meat from hippopotamuses that had died of anthrax, specifically skinning, carrying, or cutting the meat. Food insecurity was thought to have been the major factor driving the local population to consume meat from dead animals.

Large outbreaks affecting hippopotamus herds occurred within the Luangwa River Valley during 1987–1988 (7). Although no human infections were reported in relation to these outbreaks, positive results with low antibody titers against *B. anthracis* were obtained during a 1989 follow-up study from half of the subjects in a small sample of unvaccinated healthy volunteers from Luangwa River Valley villages, suggesting previous exposures in those persons through handling or consumption of meat from anthrax-infected animal carcasses (7).

Our findings are subject to a few limitations. In the household surveys, we used self-report of anthrax diagnosis to define a case; however, 41% of participants indicated

**Table 1.** Demographic characteristics of respondents to a survey conducted after an outbreak of anthrax infections among humans and hippopotamuses living in a game reserve area, by case status, Chama District, Zambia, September 2011\*

Characteristic	Persons with anthrax diagnosed since July	Persons without anthrax diagnosed since July
	2011, n = 31	2011, n = 137
Median age (range), y	33 (15–72)	34 (15–83)
Sex, %		
M	68	36
F	32	64

\*116 (41%) of survey participants reported that they did not know whether they had had anthrax diagnosed since July 2011; of these, median age was 30 (range 15–77) years, and 52% were male.

**Table 2.** Signs and symptoms of respondents reporting having had anthrax in survey conducted after outbreak of anthrax infections among humans and hippopotamuses living in a game reserve area, Chama District, Zambia, September 2011\*

Signs/symptoms	No. (%) respondents
Myalgia	21 (67)
Skin lesion	18 (58)
Fatigue	18 (58)
Diarrhea	17 (54)
Fever	16 (52)

\*Anthrax infection diagnosed since July 2011.

they did not know whether they had received an anthrax diagnosis. We assumed that these respondents might not have understood the question and had probably not had anthrax diagnosed. Although this assumption is a limitation, it would probably bias our associations toward the null. We also had to use self-report of diagnosis rather than laboratory confirmation. However, separately some hippopotamus and human samples were confirmed in the laboratory as positive for *B. anthracis*, which does strengthen the epidemiologic linkage (14). Finally, slight discrepancies can be noted in the number of cases and hippopotamus deaths in this and the 2 other reports describing other aspects of the outbreak and response that have been published; specifically, the numbers of human cases vary from 511 to 521, and the numbers of hippopotamus deaths vary from 81 to 85 (14,15). This discrepancy likely illustrates the difficulty in describing events in very remote areas.

From this investigation we found that the greatest risk for having anthrax diagnosed came from carrying, skinning, or butchering hippopotamuses. This finding is consistent with other anthrax outbreaks associated with contaminated meat (11,16).

Recommendations from this investigation built on the initial response of the Zambia Ministry of Health and included community education, enhanced surveillance in human and animal populations, and resolution of food insecurities by working with governmental and nongovernmental agencies. The message to not eat meat from animals found dead was communicated at the time of the initial investigation. On the basis of survey responses indicating persons were no longer touching the meat and that carcasses were

no longer being butchered, we think the messages were received and understood by the communities affected. Because the handling of the carcasses proved to be the most important risk factor for anthrax infection, future education campaigns should also focus on avoiding handling animals that have died of unknown causes. In rural Zimbabwe communities where anthrax awareness was high (71.5%) in a 2013 survey, 41% of persons surveyed reported “forgetting about anthrax,” a major reason for consuming meat from anthrax-infected animals (17). Residents should be reminded by community-based awareness campaigns or other means of the hazards of consuming meat from animals that have died of unknown causes (15).

To inform planning, wildlife authorities should identify high-risk periods and locations for naturally occurring animal outbreaks through ecologic studies that identify conditions favoring anthrax infection among animal populations (18–20). Wildlife and public health authorities should work together to ensure that community-based campaigns proactively prepare communities for possible outbreaks according to their risk profile (20). Community-based interventions should involve residents in addressing communitywide food insecurity and in educating neighbors on the hazards of consuming meat from animals that die of unknown causes (16). These interventions should begin before the dry season in outbreak-prone areas.

Questionnaire responses showed that food insecurities appear to be the primary reason for handling and consuming meat from animals found dead. Other countries in Africa have undertaken successful programs to distribute meat from trophy animals to feed communities with limited access to protein while also reducing poaching by local communities (21). Such an approach might be considered as a component of a multisectoral solution to address food insecurity and consumption of unsafe foods in Zambia.

Overall, food insecurity throughout sub-Saharan Africa has improved throughout recent years; however, hunger and malnutrition continue to be concerns in many sub-Saharan countries including Zambia. Zambia maintains a

**Table 3.** Association of anthrax diagnosis with specific activities involving hippopotamus carcasses based on responses to a survey conducted after an outbreak of anthrax infections among humans and hippopotamuses living in a game reserve area, Chama District, Zambia, September 2011\*

Activity	No. (%) persons		OR (95% CI)	aOR (95% CI)
	With anthrax diagnosed since July 2011, n = 31	Without anthrax diagnosed, n = 137		
Skinning	14 (45)	8 (6)	13.3 (4.4–41.5)	12.0 (4.3–36.5)
Cutting	28 (90)	70 (51)	8.9 (2.5–47.5)	8.1 (2.2–29.2)
Eating	30 (97)	106 (77)	8.8 (1.3–369.3)	–
Carrying	24 (77)	54 (39)	5.3 (2.0–15.4)	4.4 (1.7–11.8)
Preparing	27 (87)	92 (67)	3.3 (1.1–13.7)	2.1 (0.5–11.8)
Cooking	27 (87)	93 (68)	3.2 (1.0–13.2)	2.0 (0.5–1.1)
Drying	21 (68)	64 (47)	2.4 (1.0–6.1)	1.7 (0.6–4.5)

\*aOR, adjusted odds ratio (adjusted for eating hippopotamus meat); OR, odds ratio.

**Table 4.** Reasons for intending to eat meat again from hippopotamuses suspected to have died from anthrax among 65 persons who reported consuming dead hippopotamus meat in a survey conducted after an outbreak of anthrax infections among humans and hippopotamuses living in a game reserve area, Chama District, Zambia, September 2011

Reason	No. (%) respondents*
Lack of side dish	44 (73)
Lack of meat	14 (22)
Hunger	4 (7)
Lack of protein	3 (5)

\*Respondents could provide >1 response.

food reserve of maize, and it was suggested throughout the investigation that officials should provide additional corn meal as a possible solution for the food shortage. However, populations at risk for food insecurity need better access to balanced diets rather than more carbohydrates (22). Our survey respondents highlighted the desire for more fresh fruits and vegetables, which suggests more balanced diets would be welcomed.

Most of the crops grown in this region were cotton and other nonedible, exportable crops. Assistance is needed to help the population better balance subsistence farming with cash crops on small family farms to improve the overall diversity of crops and ultimately mitigate the risk for food insecurity (22).

Our household survey aimed to determine the main risk factors for anthrax transmission and the underlying factors driving those infected to risk exposure. Our results suggest the need to address long-standing political and economic issues related to food insecurity in protected areas, as well as an urgent need for better coordination between wildlife management and public health authorities. A more proactive approach could help prevent future outbreaks.

### Acknowledgments

We would like to thank the following organizations for supporting this investigation: Epidemic Intelligence Service, US Centers for Disease Control and Prevention, Atlanta, Georgia, USA; Center for Global Health, US Centers for Disease Control and Prevention; the Zambia Ministry of Health, Lusaka, Zambia; and local medical staff, participants, and interviewers from the Chama District of Zambia. Thanks also to Michael Peters for his contributions to the mapping.

At the time of this investigation, Dr. Lehman was an Epidemic Intelligence Officer assigned to the Bacterial Special Pathogens Branch, Division of High-Consequence Pathogens and Pathology, National Center for Emerging and Zoonotic Infectious Diseases, Centers for Disease Control and Prevention, Atlanta, Georgia, USA. He is currently a public health officer in the US Air Force, assigned to the US Air Force School of Aerospace Medicine, Wright-Patterson Air Force Base, Ohio, USA. His primary research interests include food protection, food security, and international public health.

### References

1. Hang'ombe MB, Mwansa JC, Muwowo S, Mulenga P, Kapina M, Musenga E, et al. Human-animal anthrax outbreak in the Luangwa valley of Zambia in 2011. *Trop Doct.* 2012;42:136–9. <http://dx.doi.org/10.1258/td.2012.110454>
2. Munang'andu HM, Banda F, Siamudaala VM, Munyeme M, Kasanga CJ, Hamududu B. The effect of seasonal variation on anthrax epidemiology in the upper Zambezi floodplain of western Zambia. *J Vet Sci.* 2012;13:293–8. <http://dx.doi.org/10.4142/jvs.2012.13.3.293>
3. Clegg SB, Turnbull PC, Foggini CM, Lindeque PM. Massive outbreak of anthrax in wildlife in the Malilangwe Wildlife Reserve, Zimbabwe. *Vet Rec.* 2007;160:113–8. <http://dx.doi.org/10.1136/vr.160.4.113>
4. Siamudaala VM, Bwalya JM, Munang'andu HM, Sinyangwe PG, Banda F, Mweene AS, et al. Ecology and epidemiology of anthrax in cattle and humans in Zambia. *Jpn J Vet Res.* 2006;54:15–23.
5. Tuchili LM, Pandey GS, Sinyangwe PG, Kaji T. Anthrax in cattle, wildlife and humans in Zambia. *Vet Rec.* 1993;132:487. <http://dx.doi.org/10.1136/vr.132.19.487-a>
6. Hugh-Jones ME, de Vos V. Anthrax and wildlife. *Rev Sci Tech.* 2002;21:359–83. <http://dx.doi.org/10.20506/rst.21.2.1336>
7. Turnbull PC, Bell RH, Saigawa K, Munyenyeembe FE, Mulenga CK, Makala LH. Anthrax in wildlife in the Luangwa Valley, Zambia. *Vet Rec.* 1991;128:399–403. <http://dx.doi.org/10.1136/vr.128.17.399>
8. World Health Organization. Anthrax in humans and animals, 4th edition. Geneva: World Health Organization; 2008.
9. Wafula MM, Patrick A, Charles T. Managing the 2004/05 anthrax outbreak in Queen Elizabeth and Lake Mburo National Parks, Uganda. *Afr J Ecol.* 2008;46:24–31. <http://dx.doi.org/10.1111/j.1365-2028.2007.00796.x>
10. Pienaar UD. Epidemiology of anthrax in wild animals and the control of anthrax epizootics in the Kruger National Park, South Africa. *Fed Proc.* 1967;26:1496–502.
11. Ndyabahinduka DG, Chu IH, Abdou AH, Gaifuba JK. An outbreak of human gastrointestinal anthrax. *Ann Ist Super Sanita.* 1984;20:205–8.
12. Central Statistics Office. Zambia census [cited 2017 Apr 18]. <http://www.zamstats.gov.zm/index.php/publications/category/11-2010-census>
13. Food and Agriculture Organization of the United Nations. FAO in emergencies, Zambia, 2011–2012 [cited 2017 Apr 18]. <http://www.fao.org/emergencies/countries/detail/en/c/161518>
14. Hang'ombe MB, Mwansa JC, Muwowo S, Mulenga P, Kapina M, Musenga E, et al. Human-animal anthrax outbreak in the Luangwa valley of Zambia in 2011. *Trop Doct.* 2012;42:136–9. <http://dx.doi.org/10.1258/td.2012.110454>
15. Kasolo F, Yoti Z, Bakyaita N, Gaturuku P, Katz R, Fischer JE, et al. IDSR as a platform for implementing IHR in African countries. *Biosecur Bioterror.* 2013;11:163–9. <http://dx.doi.org/10.1089/bsp.2013.0032>
16. Chirundu D, Chihanga S, Chimusoro A, Chirenda J, Apollo T, Tshimanga M. Behavioural factors associated with cutaneous anthrax in Musadzi area of Gokwe North, Zimbabwe. *Cent Afr J Med.* 2009;55:50–4.
17. Chikerema SM, Matope G, Pfukenyi DM. Awareness and attitude toward zoonoses with particular reference to anthrax among cattle owners in selected rural communities of Zimbabwe. *Vector Borne Zoonotic Dis.* 2013;13:243–9. <http://dx.doi.org/10.1089/vbz.2011.0916>
18. Blackburn JK, McNyset KM, Curtis A, Hugh-Jones ME. Modeling the geographic distribution of *Bacillus anthracis*, the causative agent of anthrax disease, for the contiguous United States using predictive ecological niche modeling. *Am J Trop Med Hyg.* 2007;77:1103–10.

19. Blackburn JK, Odugbo MO, Van Ert M, O'Shea B, Mullins J, Perreten V, et al. *Bacillus anthracis* diversity and geographic potential across Nigeria, Cameroon and Chad: further support of a novel West African lineage. *PLoS Negl Trop Dis*. 2015; 9:e0003931. <http://dx.doi.org/10.1371/journal.pntd.0003931>
20. Gombe NT, Nkomo BM, Chadambuka A, Shambira G, Tshimanga M. Risk factors for contracting anthrax in Kuwirirana ward, Gokwe North, Zimbabwe. *Afr Health Sci*. 2010;10:159–64.
21. Weaver LC, Petersen T. Namibia communal area conservancies. In: Baldus RD, Damm GR, Wollscheid K-U, editors. *Best practices in sustainable hunting: a guide to best practices from around the world*. Budakeszi (Hungary): CIC—International Council for Game and Wildlife Conservation; 2008. p. 48–52.
22. McGuire S; Food and Agriculture Organization of the United Nations; International Fund for Agricultural Development; World Food Programme. *The state of food insecurity in the world 2015: meeting the 2015 International Hunger Targets: taking stock of uneven progress*. *Adv Nutr*. 2015;6:623–4. <http://dx.doi.org/10.3945/an.115.009936>

Address for correspondence: Melissa A. Marx, Johns Hopkins University Bloomberg School of Public Health, International Health, 615 N Wolf St, Rm E5541, Baltimore, MD 21205-2103, USA; email: [mmarx@jhu.edu](mailto:mmarx@jhu.edu)

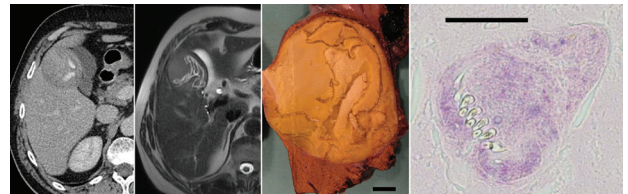
## December 2014: Zoonoses

- Variably Protease-Sensitive Prionopathy, a Unique Prion Variant with Inefficient Transmission Properties
- Geographic Divergence of Bovine and Human Shiga Toxin–Producing *Escherichia coli* O157:H7 Genotypes, New Zealand
- Bacterial Pathogens Associated with Hidradenitis Suppurativa, France
- Replication and Shedding of MERS-CoV in Upper Respiratory Tract of Inoculated Dromedary Camels
- Transmission Characteristics of Variably Protease-Sensitive Prionopathy



- Seroconversion for Infectious Pathogens among UK Military Personnel Deployed to Afghanistan, 2008–2011
- Circulation of Reassortant Influenza A(H7N9) Viruses in Poultry and Humans, Guangdong

- Molecular Evolution of Peste des Petits Ruminants Virus Province, China, 2013
- Effects of Knowledge, Attitudes, and Practices of Primary Care Providers on Antibiotic Selection, United States
- Accuracy of Herdsmen Reporting versus Serologic Testing for Estimating Foot-and-Mouth Disease Prevalence
- Residual Infestation and Recolonization during Urban *Triatoma infestans* Bug Control Campaign, Peru
- Two *Anaplasma phagocytophilum* Strains in *Ixodes scapularis* Ticks, Canada
- Equine Influenza A(H3N8) Virus Infection in Cats



- *Francisella tularensis* Bacteria Associated with Feline Tularemia in the United States
- Gouleako and Herbert Viruses in Pigs, Republic of Korea, 2013
- Human Infection with Influenza Virus A(H10N8) from Live Poultry Markets, China, 2014
- Molecular Epidemiology of Influenza A(H1N1)pdm09 Virus among Humans and Swine, Sri Lanka
- Novel Amdoparvovirus Infecting Farmed Raccoon Dogs and Arctic Foxes
- Novel Porcine Epidemic Diarrhea Virus Variant with Large Genomic Deletion, South Korea
- MERS Coronavirus Neutralizing Antibodies in Camels, Eastern Africa, 1983–1997
- *Echinococcus ortleppi* Infections in Humans and Cattle, France
- Avian Bornavirus in Free-Ranging Psittacine Birds, Brazil
- Human Hantavirus Infections in the Netherlands
- Equine Influenza A(H3N8) Virus Isolated from Bactrian Camel, Mongolia
- Human Metapneumovirus Infection in Chimpanzees, United States
- Putative New West Nile Virus Lineage in *Uranotaenia unguiculata* Mosquitoes, Austria, 2013



**EMERGING  
INFECTIOUS DISEASES**

<https://wwwnc.cdc.gov/eid/articles/issue/20/12/table-of-contents>

# Role of Food Insecurity in Outbreak of Anthrax Infections among Humans and Hippopotamuses Living in a Game Reserve Area, Rural Zambia

## Technical Appendix

### Chama District Anthrax Exposure Follow-Up Investigation Form

#### SUPPLEMENTAL MATERIAL

FORM NUMBER: \_\_\_\_\_ Household number \_\_\_\_\_

Name of interviewer (First Last) \_\_\_\_\_

DATE OF INTERVIEW: \_\_\_\_\_ - \_\_\_\_\_ - \_\_\_\_\_

(dd month yy)

Name of village \_\_\_\_\_

**Thank you for agreeing to take part in this survey. This survey is voluntary and you may choose not to answer some or all of it. We are here to gather more information about an illness that may have occurred in this area.**

#### DEMOGRAPHIC INFORMATION

1. SEX:  Male  Female

2. AGE (years) \_\_\_\_\_

3. EMPLOYED:  Yes  No

4. IF YES, OCCUPATION: \_\_\_\_\_



**RISK EXPOSURES**

5. Did you do any of the following activities with **dead hippos** between July 2011 and September 2011?

Skinning  Yes  No

Drying  Yes  No

Cutting meat  Yes  No

Carrying meat  Yes  No

Preparing meat for cooking  Yes  No

Cooking meat  Yes  No

Eating meat  Yes  No

6. If you ate **hippo meat** how was it prepared?

Raw  Yes  No

Roasted  Yes  No

Dried  Yes  No

Boiled  Yes  No

7. Do you have any hippo meat in your house?  Yes  No

8. Did you see any dead hippos in the last week?  Yes  No

9. If yes, where did you see the dead hippos? \_\_\_\_\_

10. If yes, did you fish in the area the same day as seeing the dead hippo?  Yes  No

11. When did you eat or have contact with **dead hippos**?

Earliest date \_\_\_\_-\_\_\_\_-\_\_\_\_ Most recent date \_\_\_\_-\_\_\_\_-\_\_\_\_  
dd month yy dd month yy

12. Did you eat any other game meat between July 2011 and September 2011?  Yes  No

13. Did you eat fish between July 2011 and September 2011?  Yes  No

If you ate fish how was it prepared?

Raw  Yes  No

Roasted  Yes  No

Fried  Yes  No

Dried  Yes  No

Boiled  Yes  No

#### **PAST MEDICAL HISTORY**

14. Have you had a skin lesion, similar to the photo shown here, before July 2011?  Yes  No

15. If yes, was it more than one year ago?  Yes  No

16. Have you been diagnosed with anthrax before July 2011?  Yes  No

17. If yes, was it more than one year ago?  Yes  No

18. Do you have any on-going health conditions?  Yes  No  Refused

19. May I ask what your conditions are?  Yes  No

First Condition: \_\_\_\_\_

Second Condition: \_\_\_\_\_

Third Condition: \_\_\_\_\_

#### **CLINICAL INFORMATION**

20. Were you ill between July 2011 and September 2011?  Yes  No

(if no skip to **FOOD SECURITY**)

21. Chief Complaint? \_\_\_\_\_

22. Date of onset: \_\_\_\_-\_\_\_\_-\_\_\_\_ (show calendar to help with date)

dd month yy

23. Did you have any of the following between July 2011 and September 2011?

Cough  Yes  No

If yes, sputum production  Yes  No

If yes, any blood  Yes  No

Shortness of breath  Yes  No

Conjunctivitis  Yes  No

Tender or enlarged lymph nodes  Yes  No

Fever  Yes  No

Headache  Yes  No

Stiff neck  Yes  No

Muscle aches  Yes  No

Fatigue  Yes  No

Joint pains  Yes  No

Confusion  Yes  No

Sore throat  Yes  No

Diarrhea  Yes  No If yes, bloody?  Yes  No

Vomiting  Yes  No If yes, bloody?  Yes  No

Skin lesion(s)  Yes  No

Boil  Yes  No

Black scab (show photo)  Yes  No

24. Where was the black scab?

Face  Yes  No

Was there a cut or scratch here before the lesion?  Yes  No

Neck  Yes  No

Was there a cut or scratch here before the lesion?  Yes  No

Back  Yes  No

Was there a cut or scratch here before the lesion?  Yes  No

Chest  Yes  No

Was there a cut or scratch here before the lesion?  Yes  No

Arm  Yes  No

Was there a cut or scratch here before the lesion?  Yes  No

Hand  Yes  No

Was there a cut or scratch here before the lesion?  Yes  No

Leg  Yes  No

Was there a cut or scratch here before the lesion?  Yes  No

Foot  Yes  No

Was there a cut or scratch here before the lesion?  Yes  No

25. Did you go to a clinical or hospital for care?  Yes  No

26. Name of hospital or clinic \_\_\_\_\_

27. Date you sought care \_\_\_\_ - \_\_\_\_\_ - \_\_\_\_\_

dd month yy

28. Were you told you had anthrax?  Yes  No

29. Were you given medication as treatment?  Yes  No

**FOOD SECURITY:** We understand that access to food in this area is difficult. We would like to ask a few questions to better understand the problem with limited food sources.

30. Do you hunt?  Yes  No

31. Do you farm?  Yes  No

If yes what crops?

Maize  Yes  No

Cotton  Yes  No

Rice  Yes  No

Other \_\_\_\_\_

32. What is your primary source of food?

Maize  Yes  No

Beans  Yes  No

Game meat  Yes  No

Ground nuts  Yes  No

Fish  Yes  No

33. What food would you prefer to substitute for game meat? \_\_\_\_\_

34. Would you eat meat from an animal you found dead?  Yes  No

35. If yes, why would you eat meat from an animal you found dead? \_\_\_\_\_