

of 1/2, 5/6, 943, and 944 but PCR negative for the 1/6 amplicon (Figure, panels B–D). The only minor difference between strains Stre15001 and 05ZYH33 lay in the 3/4 amplicon (Figure, panel C). Clearly the 3/4 DNA fragment is present in the 89K PAI from strain 05ZYH33 but not in the counterpart of the strain Stre15001 (Figure, panel C); that is, strain Stre15001 carries a variant of 89K PAI lacking (at least part of, if not all) the 3/4 DNA fragment. In terms of 89K PAI (and pulsed-field gel electrophoresis/Sao protein), we propose that a heterogeneous SS2 population is circulating in China. Also, we observe that the differentiation of bacterial virulence is related to the clinical strains using the infection model of Balb/c mice (online Technical Appendix Figure 5).

In summary, the loss of 89K PAI might highlight the emergence of an epidemic SS2 population. This population appears to have genetic heterogeneity that is undergoing evolution in an adaptation to some selection pressure from the environment, host restriction, or both.

This work was supported by Zhejiang Provincial Natural Science Foundation for Distinguished Young Scholars (grant no. LR15H190001), the National Natural Science Foundation of China (grant no. 31570027), and the start-up package from Zhejiang University (Y.F.). Dr. Feng is a recipient of the “Young 1000 Talents” Award.

Y.F. and Q.H. designed this project; X.S., H.Y., J.W., and Z.L. performed experiments and analyzed the data; B.C. and R.W. contributed reagents and tools; Y.F. wrote the article.

## References

- Feng Y, Zhang H, Ma Y, Gao GF. Uncovering newly emerging variants of *Streptococcus suis*, an important zoonotic agent. *Trends Microbiol.* 2010;18:124–31. <http://dx.doi.org/10.1016/j.tim.2009.12.003>
- Gottschalk M, Segura M, Xu J. *Streptococcus suis* infections in humans: the Chinese experience and the situation in North America. *Anim Health Res Rev.* 2007;8:29–45. <http://dx.doi.org/10.1017/S1466252307001247>
- Tang J, Wang C, Feng Y, Yang W, Song H, Chen Z, et al. Streptococcal toxic shock syndrome caused by *Streptococcus suis* serotype 2. *PLoS Med.* 2006;3:e151. Erratum in: *PLoS Med.* 2006;3:e377. <http://dx.doi.org/10.1371/journal.pmed.0030151>
- Ye C, Zhu X, Jing H, Du H, Segura M, Zheng H, et al. *Streptococcus suis* sequence type 7 outbreak, Sichuan, China. *Emerg Infect Dis.* 2006;12:1203–8. <http://dx.doi.org/10.3201/eid1708.060232>
- Yu H, Jing H, Chen Z, Zheng H, Zhu X, Wang H, et al. Human *Streptococcus suis* outbreak, Sichuan, China. *Emerg Infect Dis.* 2006;12:914–20. <http://dx.doi.org/10.3201/eid1206.051194>
- Chen C, Tang J, Dong W, Wang C, Feng Y, Wang J, et al. A glimpse of streptococcal toxic shock syndrome from comparative genomics of *S. suis* 2 Chinese isolates. *PLoS One.* 2007;2:e315. <http://dx.doi.org/10.1371/journal.pone.0000315>
- Li M, Shen X, Yan J, Han H, Zheng B, Liu D, et al. GI-type T4SS-mediated horizontal transfer of the 89K pathogenicity island in epidemic *Streptococcus suis* serotype 2. *Mol Microbiol.* 2011;79:1670–83. <http://dx.doi.org/10.1111/j.1365-2958.2011.07553.x>
- Feng Y, Shi X, Zhang H, Zhang S, Ma Y, Zheng B, et al. Recurrence of human *Streptococcus suis* infections in 2007: three cases of meningitis and implications that heterogeneous *S. suis* 2 circulates in China. *Zoonoses Public Health.* 2009;56:506–14. <http://dx.doi.org/10.1111/j.1863-2378.2008.01225.x>
- Feng Y, Zheng F, Pan X, Sun W, Wang C, Dong Y, et al. Existence and characterization of allelic variants of Sao, a newly identified surface protein from *Streptococcus suis*. *FEMS Microbiol Lett.* 2007;275:80–8. <http://dx.doi.org/10.1111/j.1574-6968.2007.00859.x>
- Li M, Wang C, Feng Y, Pan X, Cheng G, Wang J, et al. SalK/SalR, a two-component signal transduction system, is essential for full virulence of highly invasive *Streptococcus suis* serotype 2. *PLoS One.* 2008;3:e2080. <http://dx.doi.org/10.1371/journal.pone.0002080>

Address for correspondence: Youjun Feng, Department of Medical Microbiology and Parasitology, Zhejiang University School of Medicine, Hangzhou, Zhejiang 310058, China; email: fengyj@zju.edu.cn; or Qinghua Hu, Shenzhen Centre for Disease Control and Prevention, Shenzhen City, Guangdong 518055, China; email: huqinghua03@163.com

## Next-Generation Sequencing of *Mycobacterium tuberculosis*

Igor Mokrousov, Ekaterina Chernyaeva, Anna Vyazovaya, Viacheslav Sinkov, Viacheslav Zhuravlev, Olga Narvskaya

Author affiliations: St. Petersburg Pasteur Institute, St. Petersburg, Russia (I. Mokrousov, A. Vyazovaya, O. Narvskaya); St. Petersburg State University, St. Petersburg (E. Chernyaeva); Research Institute of Phthisiopulmonology, St. Petersburg (E. Chernyaeva, V. Zhuravlev, O. Narvskaya); Scientific Center of Family Health and Reproductive Problems, Irkutsk, Russia (V. Sinkov)

DOI: <http://dx.doi.org/10.3201/eid2206.152051>

**To the Editor:** Next-generation sequencing (NGS) technology is becoming more affordable and is increasingly being widely used for high-resolution molecular epidemiology of tuberculosis. Using an example of the emerging multidrug-resistant strain of *Mycobacterium tuberculosis*, we showed the value of informed understanding when in silico prediction from NGS data achieved with available bioinformatics tools is placed within the context of the existing genotyping framework.

Spoligotyping is a classical method of *M. tuberculosis* genotyping, and the SITVIT\_WEB database contains data on 7,105 spoligotype patterns of 58,180 isolates from 153 countries ([http://www.pasteur-guadeloupe.fr:8081/SITVIT\\_ONLINE](http://www.pasteur-guadeloupe.fr:8081/SITVIT_ONLINE)). Spoligotyping targets a variation of the DR/CRISPR locus, whose evolution in *M. tuberculosis* occurs through deletion of single or multiple spacers. By

virtue of the orientation of the associated *cas* genes, the locus is situated on the minus strand, whereas its spacers are numbered within the locus, not the genome. Spoligotype international type (SIT) 266 (Figure, panel A) is an epidemiologically significant genotype. It constitutes a substantial proportion of the population structure of *M. tuberculosis* in Belarus, a post-Soviet state in Eastern Europe (1,2), and has been described sporadically in the neighboring provinces in northwestern and central Russia (2–5) and in Latvia (6). More important, it is multidrug resistant (MDR) (and most likely extensively drug resistant). In a recent Belarus study, SIT266 was found in 25 of 163 strains; all 25 were MDR (1). This situation contrasts clearly with its apparently parental type SIT264, which differs from SIT266 in a single spacer 8 (Figure, panel A). SIT264 is more widespread across Eastern Europe but at very low prevalence and is not associated with multidrug resistance (3,6,7). On the basis of 24 mycobacterial interspersed repetitive unit variable number tandem repeats clustering and robust phylogenetic single-nucleotide polymorphisms, SIT264 and SIT266 isolates are assigned to the Latin American–Mediterranean lineage of *M. tuberculosis* (2).

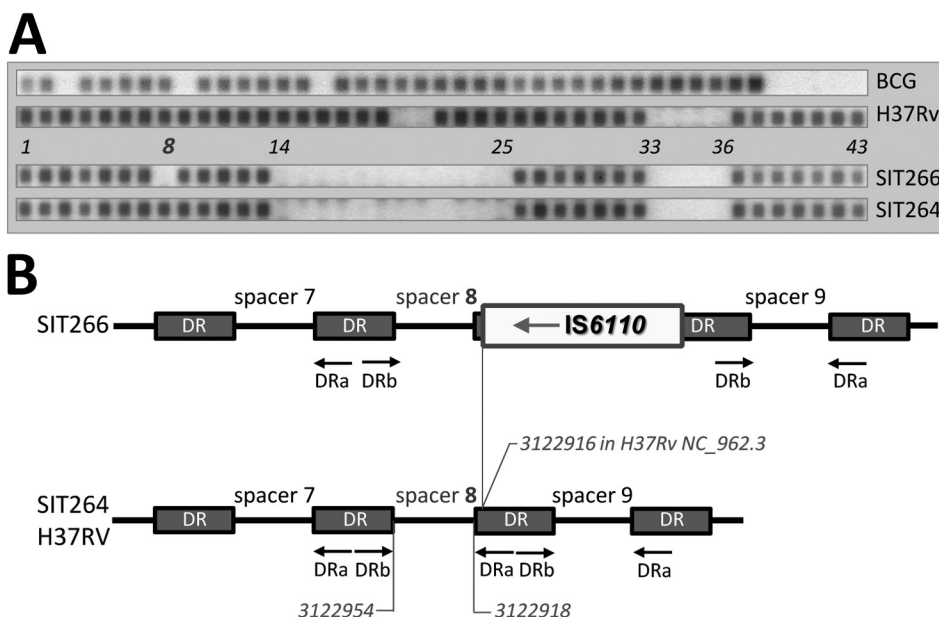
We recovered 2 MDR *M. tuberculosis* isolates of SIT266 from pulmonary tuberculosis patients from northwestern Russia in 2014. Bacterial DNA was subjected to macroarray-based spoligotyping (8) and whole-genome sequencing on the MiSeq platform (Illumina, San Diego, CA, USA). *M. tuberculosis* NGS data were deposited in the National Center for Biotechnology Information Sequence Read Archive (project no. PRJNA305488).

The short sequencing reads were subjected to analysis by using the SpoTyping program (<https://github.com/xiaeryu/SpoTyping>) (9) and the TGS-TB online tool

(<https://gph.niid.go.jp/tgs-tb/>) (10) to deduce their spoligoprofile. We used the TGS-TB tool to map the IS6110 insertion sites and detect drug resistance mutations. The reads also were mapped to the genome of reference strain H37Rv (GenBank accession no. NC\_00962.3) by using the Geneious 9.0 package (Biomatters Ltd, Auckland, New Zealand). We obtained 1,294,895 and 816,693 paired reads for strains 4542 and 8279, respectively, and mapped them to the reference. Mean read length was 300 bp, and the average genome coverage was 72.

Strains 4542 and 8279 were phenotypically MDR and harbored mutations associated with resistance to all 5 first line-drugs. The macroarray hybridization spoligotyping assigned both strains to spoligotype SIT266. However, by in silico typing, their spoligotype was predicted to be SIT264 (Figure, panel A). To reconcile these findings, we hypothesized that this discrepancy resulted from an IS6110 asymmetrically inserted in the direct repeat unit adjacent to the spacer 8 in a SIT266 isolate. This insertion would disrupt a target sequence for biotin-labeled DRa primer, thus preventing spacer 8 from amplification. Indeed, in both SIT266 isolates, the in silico analysis identified a forward IS6110 insertion that was mapped to position 3122916 in H37Rv genome (online Technical Appendix Figure, <http://wwwnc.cdc.gov/EID/article/22/6/15-2051-Techapp1.pdf>). This location correlates with the location of spacer 8 in this same genome from positions 3122954 to 3122918. Thus, IS6110 precedes spacer 8 in the genome of isolate with spoligotype SIT266, or follows it, within the DR locus (Figure, panel B; online Technical Appendix Figure).

An immediate excellent contribution of NGS with regard to tuberculosis treatment and control is its capacity to rapidly screen for multiple gene targets linked to the development



**Figure.** A) Spoligotyping hybridization profiles of H37Rv and BCG reference strains, *Mycobacterium tuberculosis* SIT266 (2 strains in this study) and SIT264 (previously published strain in [3]). SIT, spoligotype international type, designated according to SITVIT\_WEB database ([http://www.pasteur-guadeloupe.fr:8081/SITVIT\\_ONLINE](http://www.pasteur-guadeloupe.fr:8081/SITVIT_ONLINE)). B) Schematic view of the DR/CRISPR locus (region of spacers 7–9) in spoligotypes SIT264 and SIT266 and reference strain H37Rv, inferred from next-generation sequencing data. Reverse DRa primer is biotin-labeled. IS6110 is not to scale.

of drug resistance. However, knowledge of strain genotype is no less clinically and epidemiologically relevant. A super-spreading strain might be marked with other pathobiologically important features. In the case presented here (indeed emerging and MDR), the NGS-based in silico spoligotyping would confuse the MDR/extensively drug resistant SIT266 with “less dangerous” SIT264. To be precise, the revealed discrepancy is not inherent to the NGS technology itself. Although the general limitation of the use of short sequencing reads to infer repetitive genome regions is known, it did not pose a problem in our study. However, both bioinformatics tools predicted the spoligoprofile solely from the presence or absence of spacer sequences and did not take into account a “hiding” effect exerted by a putative *IS6110* insertion on adjacent spacer under classical spoligotyping.

In conclusion, we suggest that an accurate NGS-based prediction requires an integrative approach to all relevant information obtained by in silico analysis of a given genome locus. In particular, not only presence of CRISPR spacers but also presence and location of potentially interfering *IS6110* insertion(s) should be considered for correct NGS-based assignment to internationally recognized spoligotypes.

This project received funding from Russian Science Foundation (grant 14-14-00292). E.C. acknowledges additional partial support from St. Petersburg State University (grant 1.38.253.2015).

## References

- Zalutskaya A, Wijkander M, Jureen P, Skrahina A, Hoffner S. Multidrug-resistant *Mycobacterium tuberculosis* caused by the Beijing genotype and a specific T1 genotype clone (SIT No. 266) is widely transmitted in Minsk. *Int J Mycobacteriol*. 2013;2:194–8. <http://dx.doi.org/10.1016/j.ijmyco.2013.08.001>
- Mokrousov I, Vyazovaya A, Narvskaya O. *Mycobacterium tuberculosis* Latin American-Mediterranean family and its sublineages in the light of robust evolutionary markers. *J Bacteriol*. 2014;196:1833–41. <http://dx.doi.org/10.1128/JB.01485-13>
- Narvskaya O, Mokrousov I, Otten T, Vishnevsky B. Molecular markers: application for studies of *Mycobacterium tuberculosis* population in Russia. In: Read MM, editor, *Trends in DNA fingerprinting research*. New York: Nova Science Publishers; 2005. p. 111–25.
- Ignatova A, Dubiley S, Stepanshina V, Shemyakin I. Predominance of multi-drug-resistant LAM and Beijing family strains among *Mycobacterium tuberculosis* isolates recovered from prison inmates in Tula Region, Russia. *J Med Microbiol*. 2006;55:1413–8. <http://dx.doi.org/10.1099/jmm.0.46575-0>
- Mokrousov I, Vyazovaya A, Solovieva N, Sunchalina T, Markelov Y, Chernyaeva E, et al. Trends in molecular epidemiology of drug-resistant tuberculosis in Republic of Karelia, Russian Federation. *BMC Microbiol*. 2015;15:279. <http://dx.doi.org/10.1186/s12866-015-0613-3>
- Tracevska T, Jansone I, Baumanis V, Marga O, Lillebaek T. Prevalence of Beijing genotype in Latvian multidrug-resistant *Mycobacterium tuberculosis* isolates. *Int J Tuberc Lung Dis*. 2003; 7:1097–103.
- Pardini M, Niemann S, Varaine F, Iona E, Meacci F, Orrù G, et al. Characteristics of drug-resistant tuberculosis in Abkhazia (Georgia), a high-prevalence area in Eastern Europe. *Tuberculosis (Edinb)*. 2009;89:317–24. <http://dx.doi.org/10.1016/j.tube.2009.04.002>
- Mokrousov I, Rastogi N. Spacer-based macroarrays for CRISPR genotyping. *Methods Mol Biol*. 2015;1311:111–31. [http://dx.doi.org/10.1007/978-1-4939-2687-9\\_7](http://dx.doi.org/10.1007/978-1-4939-2687-9_7)
- Xia E, Teo YY, Ong RT. SpoTyping: fast and accurate in silico *Mycobacterium* spoligotyping from sequence reads. *Genome Med*. 2016;8:19. <http://dx.doi.org/10.1186/s13073-016-0270-7>
- Sekizuka T, Yamashita A, Murase Y, Iwamoto T, Mitarai S, Kato S, et al. TGS-TB: total genotyping solution for *Mycobacterium tuberculosis* using short-read whole-genome sequencing. *PLoS One*. 2015;10:e0142951. <http://dx.doi.org/10.1371/journal.pone.0142951>

Address for correspondence: Igor Mokrousov, Laboratory of Molecular Microbiology, St. Petersburg Pasteur Institute, 14 Mira St, St. Petersburg, Russia; email: imokrousov@mail.ru

## MERS-CoV Infection of Alpaca in a Region Where MERS-CoV is Endemic

Chantal B.E.M. Reusken,<sup>1</sup> Chrispijn Schilp,<sup>1</sup> V. Stalin Raj, Erwin De Bruin, Robert H.G. Kohl, Elmoubasher A.B.A. Farag, Bart L. Haagmans, Hamad Al-Romaihi, Francois Le Grange, Berend-Jan Bosch, Marion P.G. Koopmans

Author affiliations: Erasmus Medical Center, Rotterdam, the Netherlands (C.B.E.M. Reusken, V.S. Raj, E. De Bruin, R.H.G. Kohl, B.L. Haagmans, M.P.G. Koopmans); Al Wabra Wildlife Preservation, Doha, Qatar (C. Schilp, F. Le Grange); Supreme Council of Health, Doha (E.A.B.A. Farag, H. Al-Romaihi); Utrecht University Faculty of Veterinary Medicine, Utrecht, the Netherlands (B.-J. Bosch)

DOI: <http://dx.doi.org/10.3201/eid2206.152113>

**To the Editor:** Accumulating evidence indicates that dromedaries (*Camelus dromedarius*) are a reservoir for zoonotic transmission of Middle East respiratory syndrome coronavirus (MERS-CoV). Although numerous studies have looked at other livestock in the Middle East region, evidence for MERS-CoV infection has only been found in dromedaries (1). Extensive and continuous circulation of MERS-CoV occurs in the Al Shahaniya region of Qatar, most likely because of the presence of an international camel racing track and numerous barns holding camels (2,3). In April 2015, we investigated the MERS-CoV infection status of 15 healthy alpacas (*Vicugna pacos*) in a herd of 20 animals and 10 healthy dromedaries in a herd of 25

<sup>1</sup>These authors contributed equally to this article.

# Next-Generation Sequencing of *Mycobacterium tuberculosis*

## Technical Appendix



**Technical Appendix Figure.** Whole-genome, short-sequencing reads of *Mycobacterium tuberculosis* strain 4542 mapped to complete genome of reference strain H37Rv (NC\_00962.3) by using Geneious 9.0 package: genome locus of spacers 7–9 in DR/CRISPR locus. Spacer numbers are given according to 43-spoligotyping (1). DR/CRISPR locus in *M. tuberculosis* is located on complementary strand, whereas spacers are consecutively numbered within the locus, not genome. Such a situation (IS6110 asymmetrically inserted in the direct repeat unit immediately adjacent to a spacer) was discovered by Filliol et al. (2).

## References

1. Kamerbeek J, Schouls L, Kolk A, van Agterveld M, van Soolingen D, Kuijper S, et al. Simultaneous detection and strain differentiation of *Mycobacterium tuberculosis* for diagnosis and epidemiology. *J Clin Microbiol.* 1997;35:907–14. [PubMed](#)
2. Filliol I, Sola C, Rastogi N. Detection of a previously unamplified spacer within the DR locus of *Mycobacterium tuberculosis*: epidemiological implications. *J Clin Microbiol.* 2000;38:1231–4. [PubMed](#)