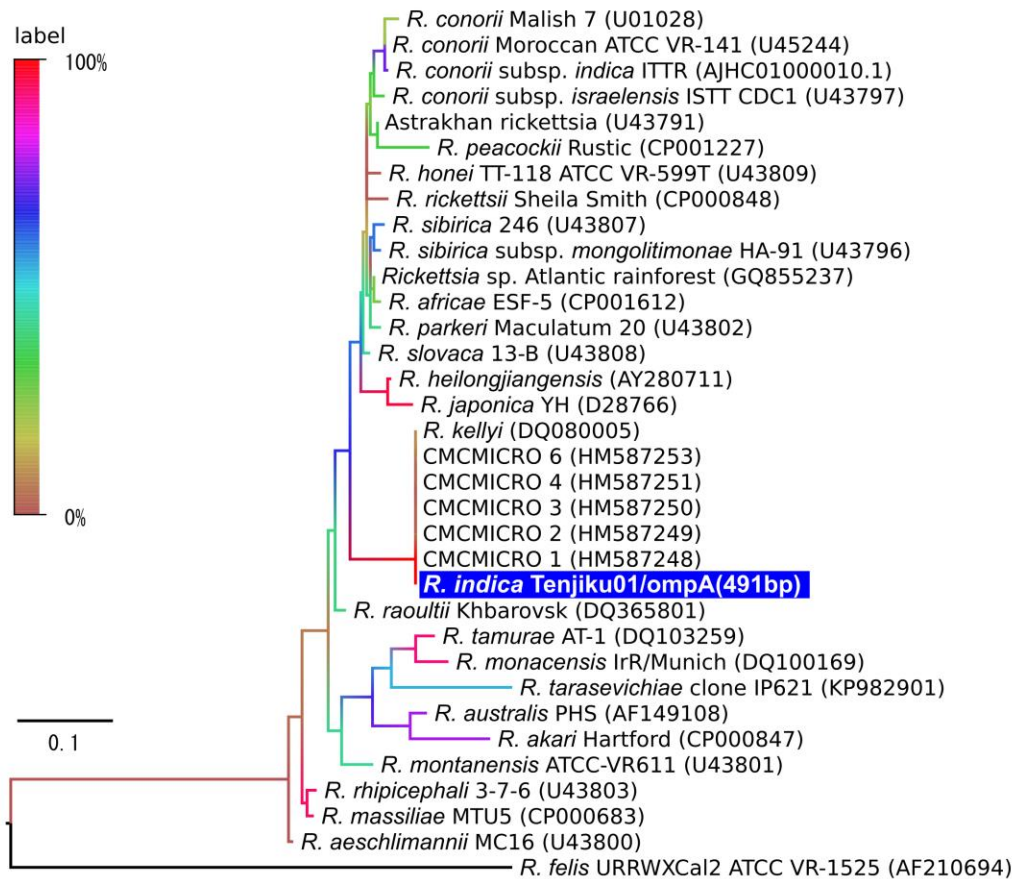


Possible Case of Novel Spotted Fever Group Rickettsiosis in Traveler Returning to Japan from India

Technical Appendix 1



Technical Appendix 1 Figure. Maximum-likelihood phylogenetic tree of outer membrane protein A sequences in 34 *Rickettsia* spp. strains constructed by using MEGA software version 4.0 (<http://www.megasoftware.net>) with 1,000-fold bootstrapping. The color of each branch represents the bootstrapping value. GenBank assembly accession numbers are given in parentheses. Scale bar indicates the number of nucleotide substitutions per site.