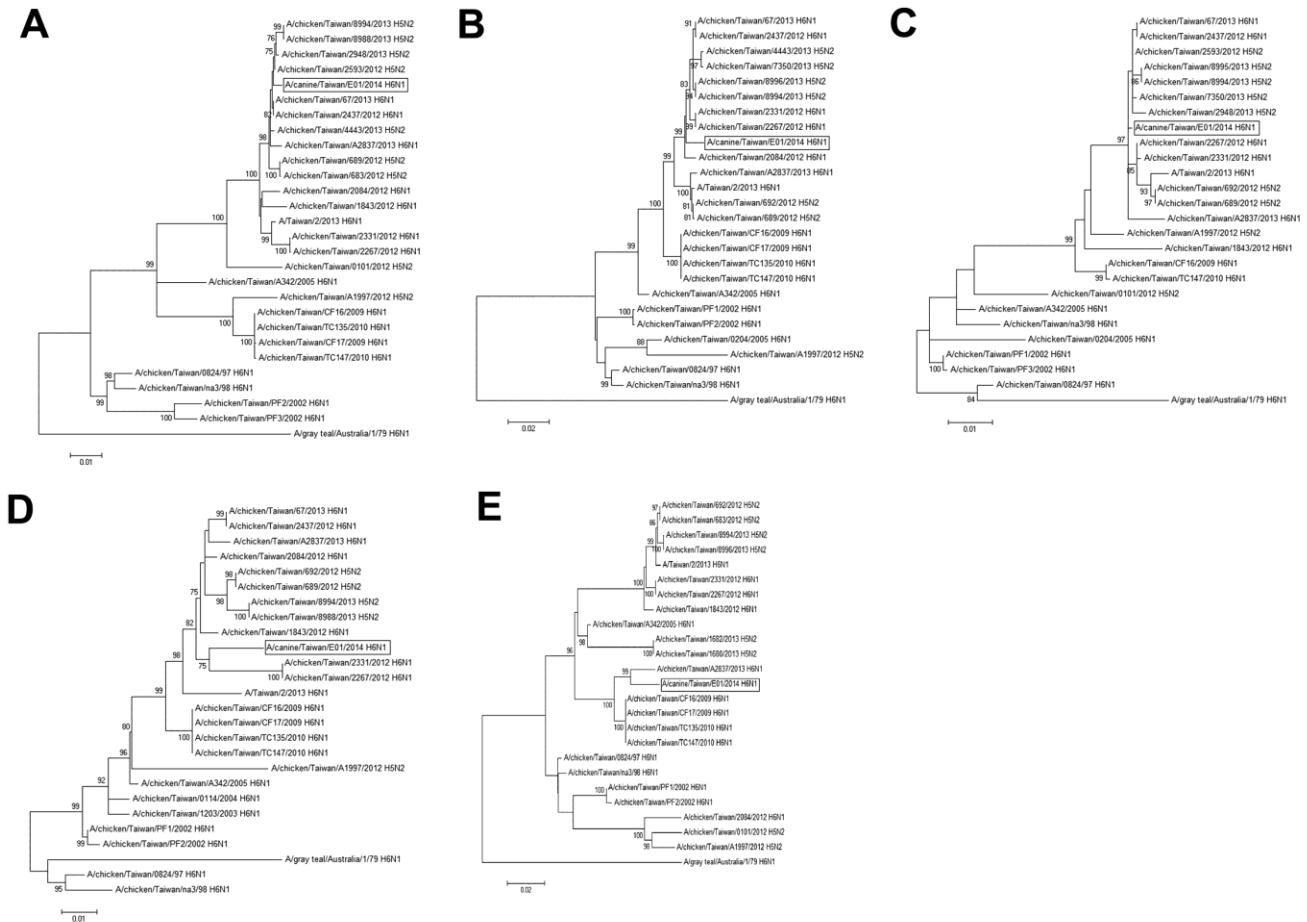


# Influenza A(H6N1) Virus in Dogs, Taiwan

## Technical Appendix



**Technical Appendix Figure.** Phylogenetic relationship between influenza A(H6N1) virus *A/canine/Taiwan/E01/2014* isolated from dogs in Taiwan and other influenza A virus lineages. Boxes indicate strain isolated in this study. Maximum-likelihood with bootstrap analysis was conducted with 1,000 replications. Only branches with bootstrap values >75% are indicated on phylogenetic trees. A) Polymerase acidic, B) nucleoprotein, C) matrix, D) nonstructural protein, and E) polymerase basic 1 genes of *A/canine/Taiwan/E01/2014* are clustered with H6N1 subtype strains isolated in Taiwan during 2012–2013 in Taiwan. Scale bars indicate nucleotide substitutions per site.