

Acknowledgments

We thank Tobias Bleicker, Sebastian Brünink, and Monika Eschbach-Bludau for technical assistance; Thomas Seifert, Sonja Matthee, and Conrad Mathee for invaluable help; and Anna-Marie Corman for assistance with geographic information processing.

This study was supported by the European Union FP7 projects EMPE-RIE (contract number 223498) and ANTIGONE (contract number 278976); the German Research Foundation (DFG grant DR 772/3-1, KA1241/18-1, to C.D.); the National Health Laboratory Service Research Trust (to W.P.); and the South African National Research Foundation (to W.P.).

**Ndapewa Laudika Ithete,
Samantha Stoffberg,
Victor Max Corman,
Veronika M. Cottontail,
Leigh Rosanne Richards,
M. Corrie Schoeman,
Christian Drosten,
Jan Felix Drexler,¹
and Wolfgang Preiser¹**

Author affiliations: University of Stellenbosch/National Health Laboratory Service, Tygerberg, South Africa (N.L. Ithete, S. Stoffberg, W. Preiser); University of Bonn Medical Centre, Bonn, Germany (V.M. Corman, C. Drosten, J.F. Drexler); University of Ulm, Ulm, Germany (V.M. Cottontail); Durban Natural Science Museum, Durban, South Africa (L.R. Richards); and University of KwaZulu Natal, Durban (M.C. Schoeman)

DOI: <http://dx.doi.org/10.3201/eid1910.130946>

References

- Zaki AM, van Boheemen S, Bestebroer TM, Osterhaus AD, Fouchier RA. Isolation of a novel coronavirus from a man with pneumonia in Saudi Arabia. *N Engl J Med*. 2012;367:1814–20. <http://dx.doi.org/10.1056/NEJMoa1211721>
- Reusken CB, Lina PH, Pielat A, de Vries A, Dam-Deisz C, Adema J, et al. Circulation of group 2 coronaviruses in a bat species common to urban areas in

Western Europe. *Vector Borne Zoonotic Dis*. 2010;10:785–91. <http://dx.doi.org/10.1089/vbz.2009.0173>

- Annan A, Baldwin HJ, Corman VM, Klose SM, Owusu M, Nkrumah EE. Human betacoronavirus 2c EMC/2012-related viruses in bats, Ghana and Europe. *Emerg Infect Dis*. 2013;19:456–9. <http://dx.doi.org/10.3201/eid1903.121503>
- Geldenhuys M, Weyer J, Nel LH, Markotter W. Coronaviruses in South African bats. *Vector Borne Zoonotic Dis*. 2013;13:516–9. <http://dx.doi.org/10.1089/vbz.2012.1101>
- Drexler JF, Gloza-Rausch F, Glende J, Corman VM, Muth D, Goettsche M, et al. Genomic characterization of severe acute respiratory syndrome-related coronavirus in European bats and classification of coronaviruses based on partial RNA-dependent RNA polymerase gene sequences. *J Virol*. 2010;84:11336–49. <http://dx.doi.org/10.1128/JVI.00650-10>
- Woo PC, Wang M, Lau SK, Xu H, Poon RW, Guo R, et al. Comparative analysis of twelve genomes of three novel group 2c and group 2d coronaviruses reveals unique group and subgroup features. *J Virol*. 2007;81:1574–85. <http://dx.doi.org/10.1128/JVI.02182-06>
- Falcón A, Vazquez-Moron S, Casas I, Aznar C, Ruiz G, Pozo F, et al. Detection of alpha and betacoronaviruses in multiple Iberian bat species. *Arch Virol*. 2011;156:1883–90. <http://dx.doi.org/10.1007/s00705-011-1057-1>
- Wacharapluesadee S, Sintunawa C, Kaewpom T, Khongnomnan K, Olival KJ, Epstein JH. Group C betacoronavirus in bat guano fertilizer, Thailand. *Emerg Infect Dis*. 2013; Epub ahead of print. <http://dx.doi.org/10.3201/eid1908.130119>
- Anthony SJ, Ojeda-Flores R, Rico-Chavez O, Navarrete-Macias I, Zambrana-Torrel C, Rostal MK, et al. Coronaviruses in bats from Mexico. *J Gen Virol*. 2013; 94(Pt 5):1028–38. <http://dx.doi.org/10.1099/vir.0.049759-0>
- Bird BH, Khristova ML, Rollin PE, Ksiazek TG, Nichol ST. Complete genome analysis of 33 ecologically and biologically diverse Rift Valley fever virus strains reveals widespread virus movement and low genetic diversity due to recent common ancestry. *J Virol*. 2007;81:2805–16. <http://dx.doi.org/10.1128/JVI.02095-06>

Address for correspondence: Jan Felix Drexler, Institute of Virology, University of Bonn Medical Centre, 53127 Bonn, Germany; email: drexler@virology-bonn.de

Search EID online
wwwnc.cdc.gov/eid

Multidrug-Resistant *Escherichia coli* Bacteremia

To the Editor: Extraintestinal pathogenic *Escherichia coli* (ExPEC) bacteria have the ability to cause diverse and serious diseases, such as urinary tract infections (UTIs) and bacteremia (1–3); incidence of bacteremia is increasing globally (4). The emergence of multidrug resistance in *E. coli* is also becoming a global concern, with particular emphasis on *E. coli* sequence type (ST) 131, which is being increasingly reported in UTIs. Drug resistance is mediated by extended-spectrum β -lactamases (ES-BLs), mainly of the CTX-M family, particularly CTX-M-15 and 14, and less frequently of the SHV and OXA families (5,6). Few studies are available regarding the characterization of *E. coli* strains causing bacteremia.

We characterized 140 *E. coli* isolates from bacteremia patients treated at Nottingham University Hospital (Nottingham, UK) over a 5-month period, with the aim of developing an epidemiologic profile of the population of ExPEC that causes bacteremia. For context, we compared the isolates with 125 *E. coli* isolates from urine samples collected during the same period. Cases were selected to include isolates from a diverse patient group: patient ages ranged from 1 month to 90 years; patient sex was evenly divided between male and female; infections were community- and hospital-associated; and suspected sources of infection varied. Antimicrobial drug susceptibility tests, PCR detection of ESBL genes multilocus sequence typing using the Achtman scheme (<http://mlst.ucc.ie/mlst/dbs/Ecoli>), and virulence-associated gene (VAG) carriage screening by PCR were performed on isolates as described (7).

Significantly more bacteremia *E. coli* isolates than urine *E. coli* isolates were resistant to ciprofloxacin (25.7%

¹These authors contributed equally to this article.

vs. 8.8%; $p \leq 0.001$) and cefradine (20.0% vs. 11.2%; $p \leq 0.05$). These results were reflected in the number of isolates in the 2 populations displaying a multidrug-resistance phenotype (resistance to antimicrobial drugs belonging to ≥ 2 classes); a significantly higher number of multidrug-resistant bacteremia *E. coli* isolates than multidrug-resistant urine isolates were found (50.7% vs. 32%; $p = 0.01$). PCR screening for ESBL carriage showed significantly higher ESBL carriage in bacteremia *E. coli* isolates than urine isolates for *bla*_{SHV} (15.7% vs. 5.6%; $p = 0.008$), *bla*_{CTX-M} (29.3% vs. 17.6%; $p = 0.025$), and *bla*_{OXA} (14.3% vs. 6.4%; $p = 0.037$). Total ESBL carriage for bacteremia isolates was also significantly higher than for urine isolates (59.3% vs. 29.6%; $p \leq 0.001$).

Multilocus sequence types were determined for all *E. coli* isolates. A total of 63 STs were found among the urine isolates (Figure, panel A); the

highest prevalence was ST73 (n = 16, 12.8%), followed by ST131 (n = 9, 7.2%), ST69 (n = 9, 7.2%), ST95 (n = 6, 4.8%), ST404 (n = 6, 4.8%), ST127 (n = 4, 3.2%), ST141 (n = 4, 3.2%), and ST10 (n = 3, 2.4%). Prevalence patterns of STs among bacteremia *E. coli* isolates were noticeably different (Figure, panel B). Three main STs were obtained. ST131 dominated (n = 30, 21.43%) and was significantly higher in prevalence than for the urine isolates ($p \leq 0.001$). ST73 (n = 24, 17.14%) and ST95 (n = 13, 9.29%) were the other 2 primary STs found. The 8 most prevalent STs in the bacteremia isolates represented 59.29% of the total population, whereas the 8 most prevalent STs in the urine isolates represented 45.6% of the total population. This finding is suggestive of selection of a smaller number of dominant STs in bacteremia.

ESBL carriage was mapped onto minimum-spanning trees for the 2

isolate groups. ESBL carriage among urine isolates was focused on a small number of STs; 19 (30.16%) of the 63 STs contained ESBL-positive isolates (Figure, panel A). The predominant ST73 group contained 18.75% ESBL-positive isolates; the other predominant STs exhibited ESBL-positive isolates at the following levels: ST131 (44.44%), ST69 (33.33%), ST95 (50%), and ST10 (0%). In contrast, 30 (51.72%) of the 58 STs among bacteremia isolates contained ESBL-positive isolates, significantly higher than for the urine isolates ($p = 0.016$). At the ST level, predominant STs had higher ESBL carriage in the bacteremia isolates than in the urine isolates: ST131 (50%), ST73 (50%), ST12 (75%), ST10 (100%), ST14 (50%), ST2278 (33.33%). ST95 (46.15%) and ST69 (20%) showed comparable levels. These results suggest that ESBL drug resistance is selecting for dominant ExPEC bacteremia strains.

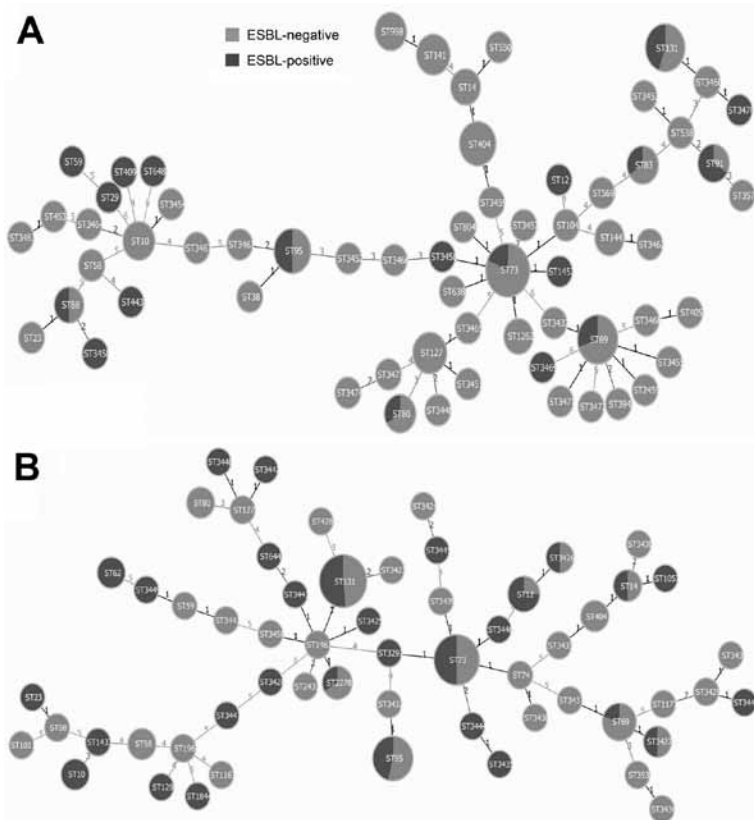


Figure. Minimum-spanning trees showing carriage of extended-spectrum β -lactamases (ESBL) in *Escherichia coli* isolates from urine samples (A) and samples from patients with bacteremia (B). Each circle represents 1 sequence type (ST), and the size of the circle reflects the number of isolates belonging to this particular ST within the bacteria group. Lines between the circles represent how different their allelic profiles are; a line labeled 1 means the linked STs differ in ≥ 1 of the 7 alleles, which is named a single locus variant (SLV). A cluster of STs linked by SLVs is a clonal complex. Nineteen (30.16%) of 63 STs found among the urine isolates were ESBL positive, in comparison to 30 (51.72%) of 58 for the bacteremia isolates.

To investigate whether the differences in ST observations between bacteremia and urine isolates could be attributable to differences in virulence genes, VAGs of all isolates were screened by multiplex PCR. VAGs were found equally distributed across the 2 populations, with no statistically significant difference ($p = 0.675$). Comparison of serum resistance levels between urine and blood isolates also showed no phenotypic differences.

In conclusion, we found high levels of ESBL carriage and multidrug resistance in ExPEC isolates that cause bacteremia. A comparison with urine isolates provided evidence that ESBL-mediated drug resistance appears to be the selective pressure in the emergence of dominant STs in bacteremia. Future research should focus on identifying if prolonged antimicrobial drug treatment in bacteremia patients is leading to this selection.

Acknowledgments

We thank staff in the clinical microbiology laboratory at Nottingham University Hospitals for their assistance in isolate collection and Nicholas Gleadall and Kuan Min Chen for technical assistance in performing multilocus sequence typing PCRs.

This work was supported by a Kuwait Government and Kuwait Civil Service Commission scholarship awarded to F.A. and an East Midlands Development Agency iNET grant awarded to A.M. and M.D.

**Fahad Alhashash,
Vivienne Weston,
Mathew Diggle,
and Alan McNally**

Author affiliations: Nottingham Trent University, Nottingham, United Kingdom (F. Alhashash, A. McNally); and Nottingham University Hospitals National Health Service Trust, Nottingham (V. Weston, M. Diggle)

DOI: <http://dx.doi.org/10.3201/eid1910.130309>

References

1. Wiles T, Kulesus R, Mulvey M. Origins and virulence mechanisms of uropathogenic *Escherichia coli*. *Exp Mol Pathol*. 2008;85:11–9. <http://dx.doi.org/10.1016/j.yexmp.2008.03.007>
2. Ron EZ. Distribution and evolution of virulence factors in septicemic *Escherichia coli*. *Int J Med Microbiol*. 2010;300:367–70. <http://dx.doi.org/10.1016/j.ijmm.2010.04.009>
3. Russo TA, Johnson J. Medical and economic impact of extraintestinal infections due to *Escherichia coli*: focus on an increasingly important endemic problem. *Microbes Infect*. 2003;5:449–56. [http://dx.doi.org/10.1016/S1286-4579\(03\)00049-2](http://dx.doi.org/10.1016/S1286-4579(03)00049-2)
4. de Kraker ME, Jarlier V, Monen JC, Heuer OE, van de Sande N, Grundmann H. The changing epidemiology of bacteremias in Europe: trends from the European Antimicrobial Resistance Surveillance System. *Clin Microbiol Infect*. 2012; [Epub ahead of print]. <http://dx.doi.org/10.1111/1469-0691.12028>
5. Nicolas-Chanoine MH, Blanco J, Leflon-Guibout V, Demarty R, Alonso MP, Canica MM, et al. Intercontinental emergence of *Escherichia coli* clone O25:H4-ST131 producing CTX-M-15. *J Antimicrob Chemother*. 2008;61:273–81. <http://dx.doi.org/10.1093/jac/dkm464>
6. Lau SH, Kaufmann ME, Livermore DM, Woodford N, Willshaw GA, Cheasty T, et al. UK epidemic *Escherichia coli* strains A–E, with CTX-M-15 β -lactamase, all belong to the international O25:H4-ST131 clone. *J Antimicrob Chemother*. 2008;62:1241–4. <http://dx.doi.org/10.1093/jac/dkn380>
7. Croxall G, Hale J, Weston V, Manning G, Cheetham P, Achtman M, et al. Molecular epidemiology of extraintestinal pathogenic *Escherichia coli* isolates from a regional cohort of elderly patients highlights the prevalence of ST131 strains with increased antimicrobial resistance in both community and hospital care settings. *J Antimicrob Chemother*. 2011;66:2501–8. <http://dx.doi.org/10.1093/jac/dkr349>

Address for correspondence: Alan McNally, Pathogen Research Group, School of Science and Technology, Nottingham Trent University, Clifton Lane, Nottingham NG11 8NS, UK; email: alan.mcnally@ntu.ac.uk

All material published in *Emerging Infectious Diseases* is in the public domain and may be used and reprinted without special permission; proper citation, however, is required.

Transmission of Schmallenberg Virus during Winter, Germany

To the Editor: Schmallenberg virus (SBV), an orthobunyavirus, emerged in northern Europe in 2011 (1). SBV infection causes transient fever, diarrhea, and a reduced milk yield in adult ruminants but, most notably, stillbirths and severe malformations in lambs and calves (2). Insect vectors play an essential role in transmission; the viral genome has been detected in various field-collected biting midges (*Culicoides* spp.) (3,4).

During autumn 2012 and winter 2012–2013, blood samples were taken at several times from individual sheep on a farm located in the German federal state of Mecklenburg–Western Pomerania. The farm is surrounded by agricultural fields and meadows. Approximately 1,000 ewes and their lambs, a dog, and some cats were kept on the farm; most of the animals are outdoors year-round. Only dams with ≥ 2 lambs are housed in open stabling in December and January. The dung is regularly cleared away and stored ≈ 10 m from 1 of the stable entrances. Repellents or insecticides were not applied in the monitored period. Blood samples were taken in September 2012 and in January and February 2013 and analyzed by an SBV-specific real-time quantitative reverse transcription PCR (RT-qPCR) (5) and by an SBV antibody ELISA (ID Screen Schmallenberg virus Indirect; IDvet; Montpellier, France) by using the recommended cutoff of 50% relative optical density as compared with the positive control (sample-to-positive ratio [S/P]).

In September 2012, blood samples from 60 sheep tested negative by the SBV antibody ELISA. Moreover, fetal malformations of the brain, spinal cord, or skeletal muscle, which might have suggested a previous SBV-infection of the dam, were not