

Mobile Messaging as Surveillance Tool during Pandemic (H1N1) 2009, Mexico

To the Editor: Pandemic (H1N1) 2009 highlighted challenges faced by disease surveillance systems. New approaches to complement traditional surveillance are needed, and new technologies provide new opportunities. We evaluated cell phone technology for surveillance of influenza outbreaks during the outbreak of pandemic (H1N1) 2009 in Mexico.

On May 12, 2009, at 2:20 PM, a random sample of 982,708 telephones from an 18 million nationwide network of mostly prepaid cell phones (*I*) received a text message invitation to a Ministry of Health survey. Influenza-like illness (ILI) in April, date of fever onset, severity, number of household members with ILI, age, influenza vaccination, household size, and number of children in each household were assessed (online Technical Appendix Figure 1, www.cdc.gov/EID/content/16/9/1488-Techapp.pdf). ILI was defined as fever and cough or sore throat, and severe ILI was defined as inability to work, study, or maintain family care. Unstructured supplementary service data, an interactive platform available on most cell phones, was used. We obtained daily counts of suspected and confirmed cases of pandemic (H1N1) 2009 from the nationwide clinic-based surveillance system Sistema Nacional de Vigilancia Epidemiológica (SINAVE) (2,3).

Of 70,856 responses received, 56,551 (78.1%) were unique mobile numbers (5.8% response rate; only the first response was used). Within 3 hours, 53% of responses were received and by 24 hours, 89% were received. Mean (SD) age of respondents was 25.2 (10.4) years (online Technical Appendix Table). A total of 9,333 persons reported ILI and 49.3% had severe

symptoms. Mean number of other persons with ILI in the household was 1.6 among respondents reporting severe disease and 0.3 among those with non-severe disease ($p < 0.0001$, by *t* test).

Epidemic curves for disease onset for confirmed and suspected cases of pandemic (H1N1) 2009 from SINAVE and daily proportion of severe cases from the cell phone survey are shown in the Figure. Daily counts of ILI were clustered around multiples of 5, and no distinct pattern was observed (online Technical Appendix Figure 2). Use of the daily proportion of severe cases may partially correct for clustering and artifactual peaks by standardizing by total number of cases. The proportion of severe cases increased throughout the month beginning on April 1 (36.4%) and peaking on April 26 (57.9%). Two distinct decreases in severity of disease coincided with Semana Santa school vacation and school closures on April 24. These decreases are consistent with the decrease in the SINAVE epidemic curve.

The pattern of change in the proportion of severe ILI may be consistent

with a decrease in transmission after control measures were implemented. The low response rate (5.8%) made it likely that respondents were not representative of the total population. Therefore, we did not make estimates of disease incidence. We were unable to determine whether a pathogen for which susceptibility was higher was responsible for the difference in number of ILI cases within the household of those reporting severe disease or whether respondents in households with several affected persons were more likely to report severe disease (online Technical Appendix Table). We observed unexpected peaks and a clustering of date of fever onset. However, the peak on April 1 may reflect disease at the end of March, and the decrease in daily proportion of severe cases may indicate lower incidence of ILI after school closures. Comparison of these data with epidemic curves for pandemic (H1N1) 2009 showed less variability than expected; no geographic variation was detected.

Our study was limited by potential selection bias, recall bias, and in-

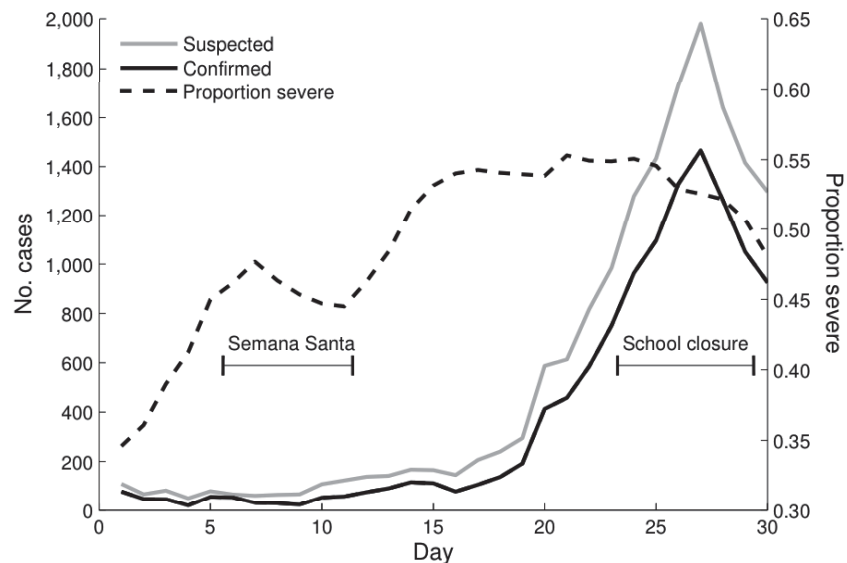


Figure. Proportion of severe cases of influenza-like illness (ILI) in Mexico, April 2009, from unstructured supplementary service data survey and confirmed and suspected cases of pandemic (H1N1) 2009 from Sistema Nacional de Vigilancia Epidemiológica. Suspected cases of pandemic (H1N1) 2009 are ILI cases for which no laboratory confirmation was possible. The daily proportion of reported severe cases and daily counts of confirmed and suspected cases of pandemic (H1N1) 2009 were smoothed by using a 5-day moving average.

clusion of mostly young persons from urban areas. Comparisons between reported cases and noncases are invalid because of the low response rate. However, comparisons within cases may be less prone to bias if they are more likely to respond.

Persons had difficulty remembering the exact date of fever onset. In 2 telephone surveys in New York City outside the influenza season (March and October–November 2003), a total of 20.8% and 19.6% of respondents, respectively, reported ILI within the past month (4), which were more than the rate of 12% during the peak of pandemic (H1N1) 2009 in New York (5). Use of daily proportion of severe cases may have partially corrected for this recall error. Also, persons may be more likely to report ILI if the date of onset was closer to the date of the survey. Nevertheless, a lower number of cases by the end of the month indicates that more accurate recall for recent dates may not be a serious problem. Generalizability of these results is of concern. However, the age group that was captured was most affected in the early stages of this outbreak (6).

Efficient estimation of extent of disease caused by a novel infectious agent may be costly and logistically difficult. When carefully deployed, unstructured supplementary service data surveys may be a practical, low-cost, and timely complement to traditional surveillance. Further refinements of this tool are required to improve its validity. To limit recall errors and increase response rate, repeated surveys at short intervals and specific strategies to improve response rate should be considered.

Acknowledgments

We thank Telefónica–Movistar for donating the survey and technical and logistical support in conducting this survey; Cecilia Vega, Sergio Chueca, and Martha Ojeda for assisting in the design of the survey and providing data; Hugo López-Gatell for providing SINAVE data on sus-

pected and confirmed cases of pandemic (H1N1) 2009; Eric Ding for providing insightful comments on the analysis strategy; and Corrina Moucheraud and Andrés Lajous for advising us on previous experiences and different capabilities of cell phone technology.

This study was supported by the Mexican National Council for Science and Technology (M. Lajous and R.L.-R.); the Ministry of Health of Mexico (M. Lajous); the Department of Epidemiology, Harvard School of Public Health (M. Lajous and J.J.O.); National Institutes of Health cooperative agreement 5U01GM076497 (Models of Infectious Disease Agent Study) (M. Lipsitch, J.J.O., and E.G.); the Research and Policy for Infectious Disease Dynamics Program of the Science and Technology Directorate, Department of Homeland Security; the Fogarty International Center, National Institutes of Health (J.C.M.); and the Medical Research Council, UK (L.D.).

Martín Lajous, Leon Danon, Ruy López-Ridaura, Christina M. Astley, Joel C. Miller, Scott F. Dowell, Justin J. O'Hagan, Edward Goldstein, and Marc Lipsitch

Author affiliations: Center for Population Health Research National Institute of Public Health, Cuernavaca, Mexico (M. Lajous, R. López-Ridaura); Harvard School of Public Health, Boston, Massachusetts, USA (M. Lajous, L. Danon, C.M. Astley, J.C. Miller, J.J. O'Hagan, E. Goldstein, M. Lipsitch); University of Warwick, Coventry, UK (L. Danon); National Institutes of Health, Bethesda, Maryland, USA (J.C. Miller); and Centers for Disease Control and Prevention, Atlanta, Georgia, USA (S.F. Dowell)

DOI: 10.3201/eid1609.100671

References

1. Telefonica. Telefonica annual report 2008. Madrid (Spain); 2009 [cited 2009 Nov 18]. http://www.telefonica.com/en/annual_report/html/home/home.html

2. Sistema Nacional de Vigilancia Epidemiológica (SINAVE). Mexico City (Mexico): Ministry of Health; 2009 [cited 2009 Nov 18]. <http://www.dgepi.salud.gob.mx/sinave/sinave1.htm>
3. Chowell G, Bertozzi SM, Colchero MA, Lopez-Gatell H, Alpuche-Aranda C, Hernandez M, et al. Severe respiratory disease concurrent with the circulation of H1N1 influenza. *N Engl J Med*. 2009;361:674–9. DOI: 10.1056/NEJMoa0904023
4. Metzger KB, Hajat A, Crawford M, Mostashari F. How many illnesses does one emergency department visit represent? Using a population-based telephone survey to estimate the syndromic multiplier. *MMWR Morb Mortal Wkly Rep*. 2004;53(Suppl):106–11.
5. Presanis AM, De Angelis D; The New York City Swine Flu Investigation Team, Hagy A, Reed C, Riley S, Cooper BS, Finelli L, Biedrzycki P, et al. The severity of pandemic H1N1 influenza in the United States, from April to July 2009: a Bayesian analysis. *PLoS Med*. 2009;6:e1000207. DOI: 10.1371/journal.pmed.1000207
6. Secretaria de Salud. Situacion actual de la epidemia, 12 de mayo de 2009. Mexico City (Mexico): Secretaria de Salud; 2009 [cited 2009 Nov 18]. http://portal.salud.gob.mx/sites/salud/descarga/pdf/influenza/situacion_actual_epidemia_120509.pdf

Address for correspondence: Martin Lajous, Department of Epidemiology, Harvard School of Public Health, 677 Huntington Ave, Boston, MA 02115, USA; email: mlajous@hsph.harvard.edu

Letters

Letters commenting on recent articles as well as letters reporting cases, outbreaks, or original research are welcome. Letters commenting on articles should contain no more than 300 words and 5 references; they are more likely to be published if submitted within 4 weeks of the original article's publication. Letters reporting cases, outbreaks, or original research should contain no more than 800 words and 10 references. They may have 1 Figure or Table and should not be divided into sections. All letters should contain material not previously published and include a word count.

Mobile Messaging as Surveillance Tool during Pandemic (H1N1) 2009, Mexico

Technical Appendix

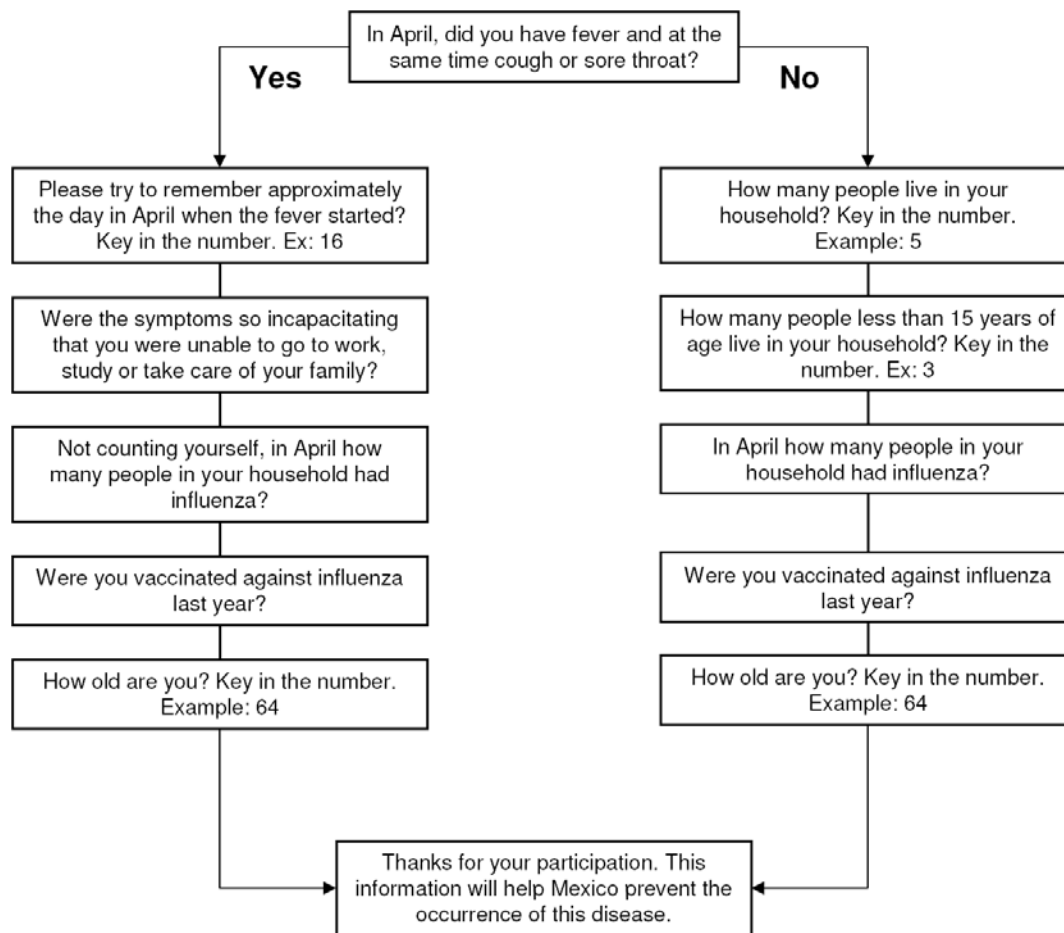


Figure 1. Pandemic (H1N1) 2009 mobile phone unstructured supplementary service data survey questions, Mexico, 2009. Ex, example.

Table. Characteristics of respondents and ILI cases from a mobile messaging technology survey, Mexico, 2009*

Characteristic	All respondents (n = 56,551)	Cases (n = 9,333)		
		All	Nonsevere (n = 4,735)	Severe (n = 4,598)
Age, y	24.7 (10.5)	23.6 (10.5)	23.5 (10)	23.8(11.2)
Severe disease, %	NA	49.3	NA	NA
No. who received influenza vaccine, %	25.9	26	26.1	25.9
No. persons with ILI in household	0.3 (1.0)	1.2 (1.9)	0.8 (1.5)	1.6 (2.1)
Location, %				
Mexico City	35.8	39.1	39.9	38.4
Nuevo Leon	17.5	12.6	13.4	11.9
San Luis Potosi	11	11.9	11.7	12.1
Quintana Roo	2.5	2.2	2.3	2.1
Rest of Mexico	32.7	33.9	34.2	33
Household size†	4.9 (2.2)	NA	NA	NA
No. persons <15 y of age in household†	1.7 (1.4)	NA	NA	NA

*Results are mean (SD) unless otherwise indicated. ILI, influenza-like illness; NA, not applicable. Missing or implausible values: age (n = 1,447) and influenza vaccination (n = 45), and persons with ILI in household (n = 329).

†Available only for noncases.

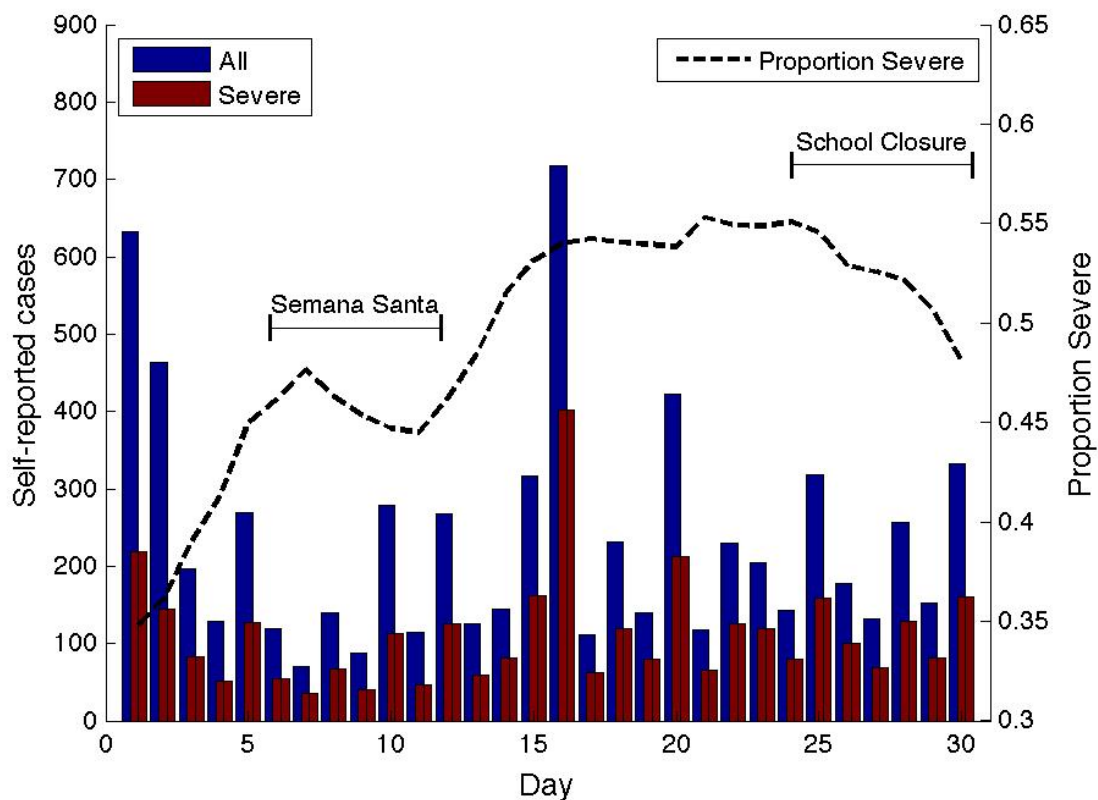


Figure 2. Reported number of nonsevere and severe cases of influenza-like illness in Mexico, April 2009, from unstructured supplementary service data survey and proportion of severe disease relative to total disease. Daily proportion of reported severe cases was smoothed by using a 5-day moving average.